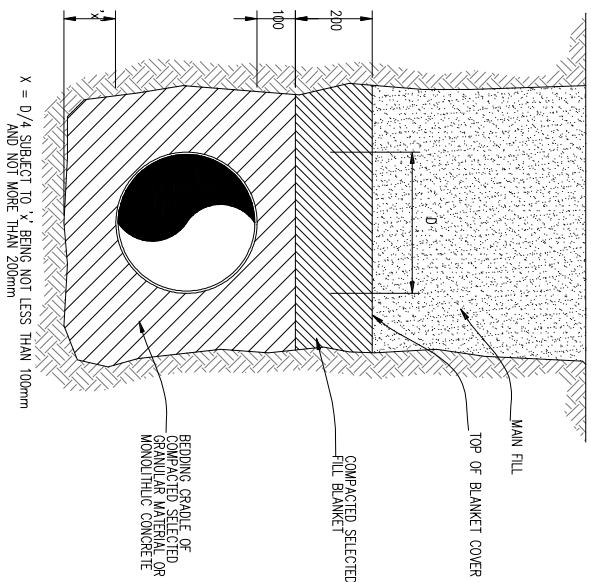
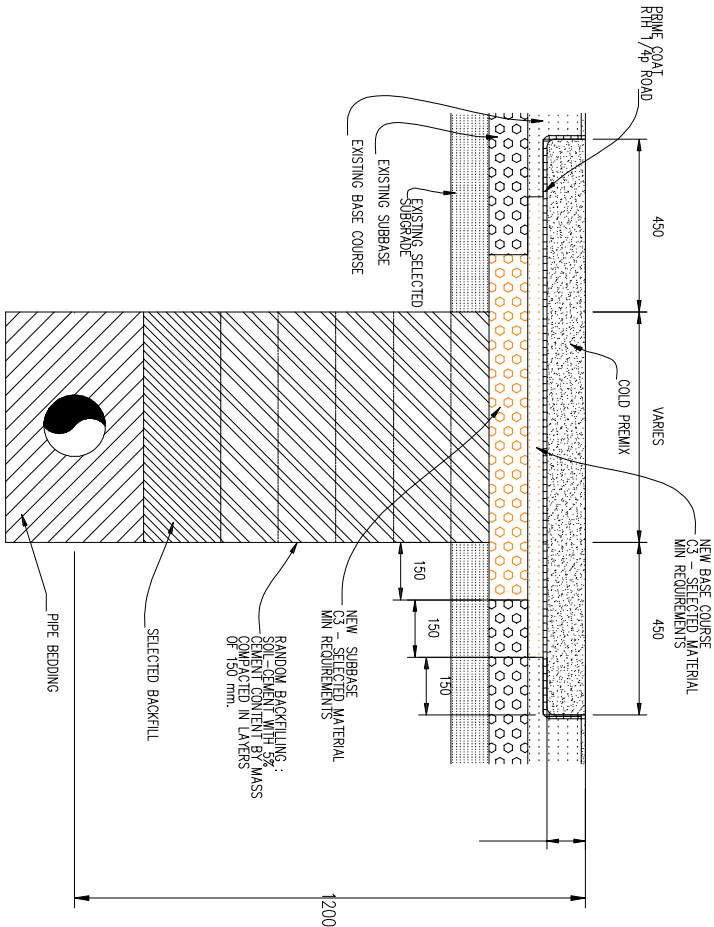
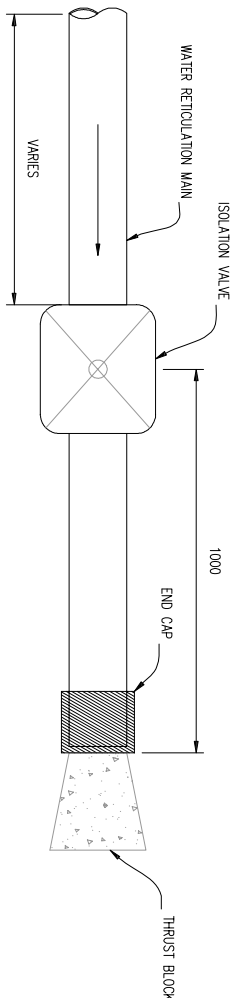


DETAIL 1: BSP 80 mm FIRE HYDRANT

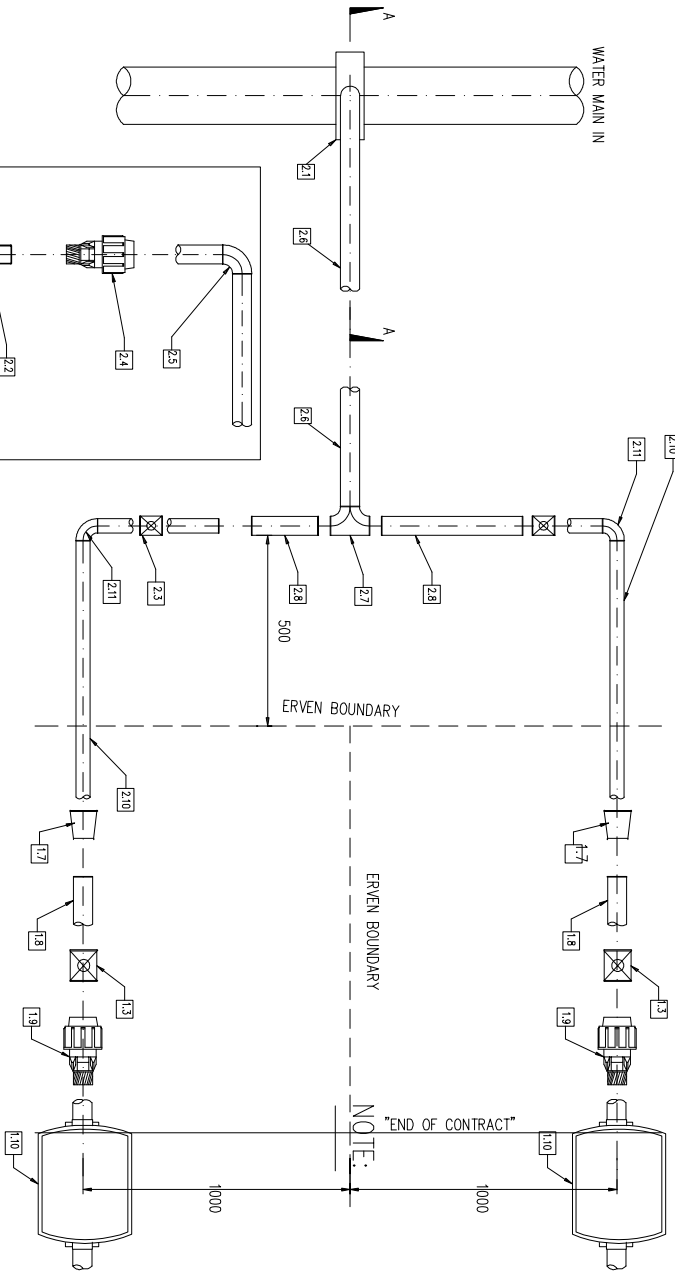


DETAIL 2: CONSTRUCTION OF PIPELINES ACROSS SURFACED ROADS: TRENCH DETAILS
SCALE 1:10

DETAIL 5: BACKFILLING OVER FLEXIBLE PIPELINE
NTS.

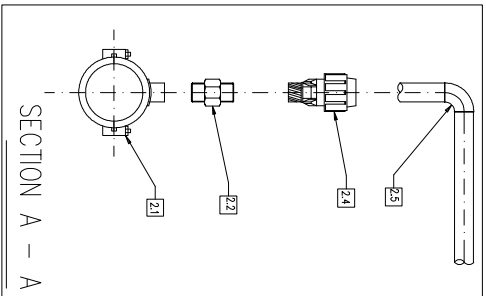


DETAIL 3: WATER ISOLATION VALVE WITH END CAP
NTS.

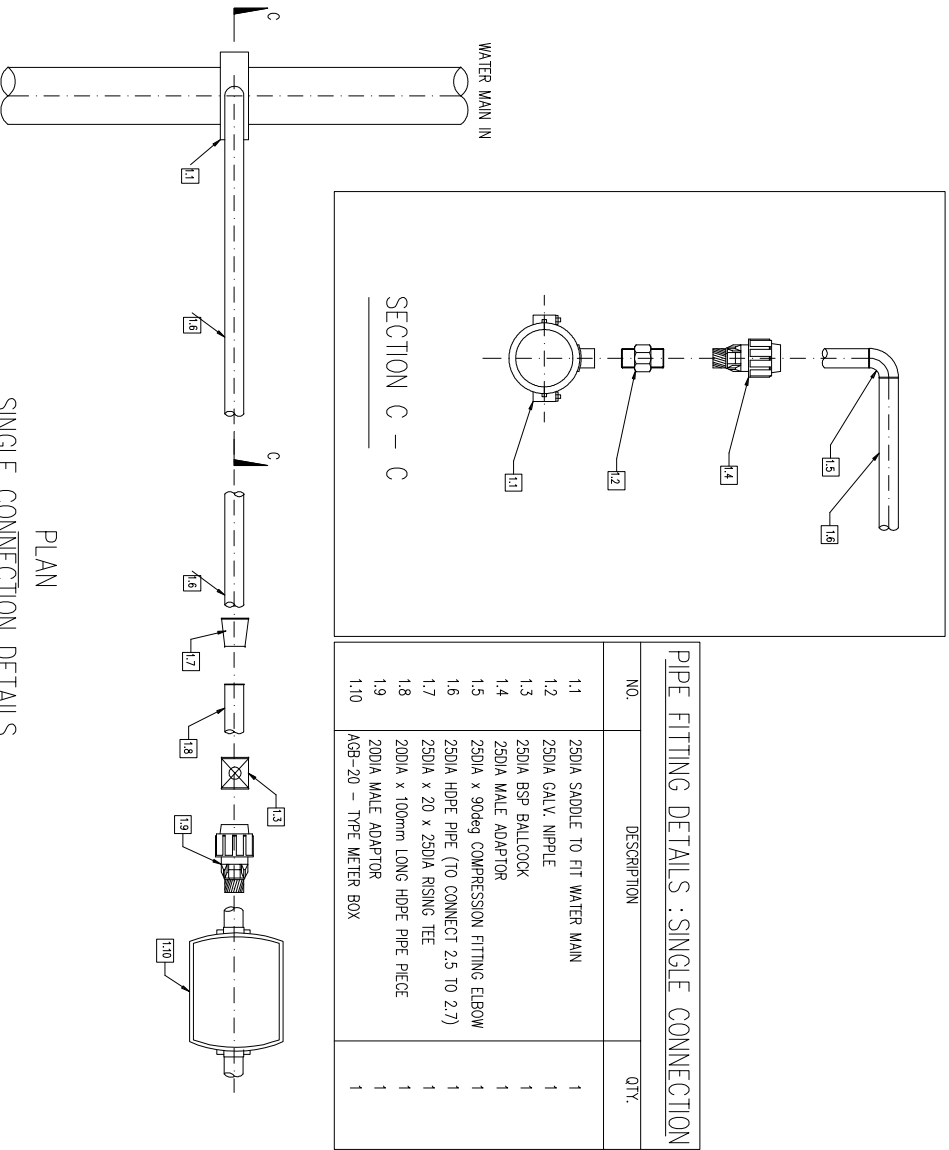


PIPE FITTING DETAILS : DOUBLE CONNECTION		
NO.	DESCRIPTION	QTY.
2.1	320A SADDLE TO FIT WATER MAIN	1
2.2	320A GALV. NIPPLE	1
2.3	320A BSP BALLCOCK	1
2.4	320A MALE ADAPTOR	1
2.5	320A x 90deg COMPRESSION FITTING ELBOW	1
2.6	320A HDPE PIPE (TO CONNECT 2.5 TO 2.7)	1
2.7	320A x 25 x 250A RISING TEE	1
2.8	320A HDPE PIPE	1
2.9	250A HDPE PIPE (TO CONNECT 2.7 TO 2.9)	2
2.10	250A x 200A COMPRESSION FITTING REDUCER	2
2.11	250A x 90deg COMPRESSION FITTING ELBOW	2

NOTE:
AGB WATER INCLUDES:
- WATER METER
- VALVES
- INLET AND OUTLET
AGB - 20 METER TYPE

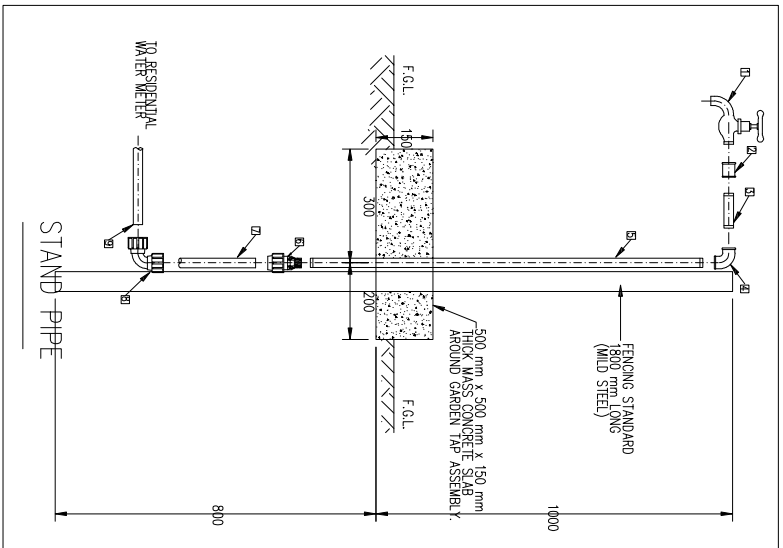


PLAN
DOUBLE CONNECTION DETAILS

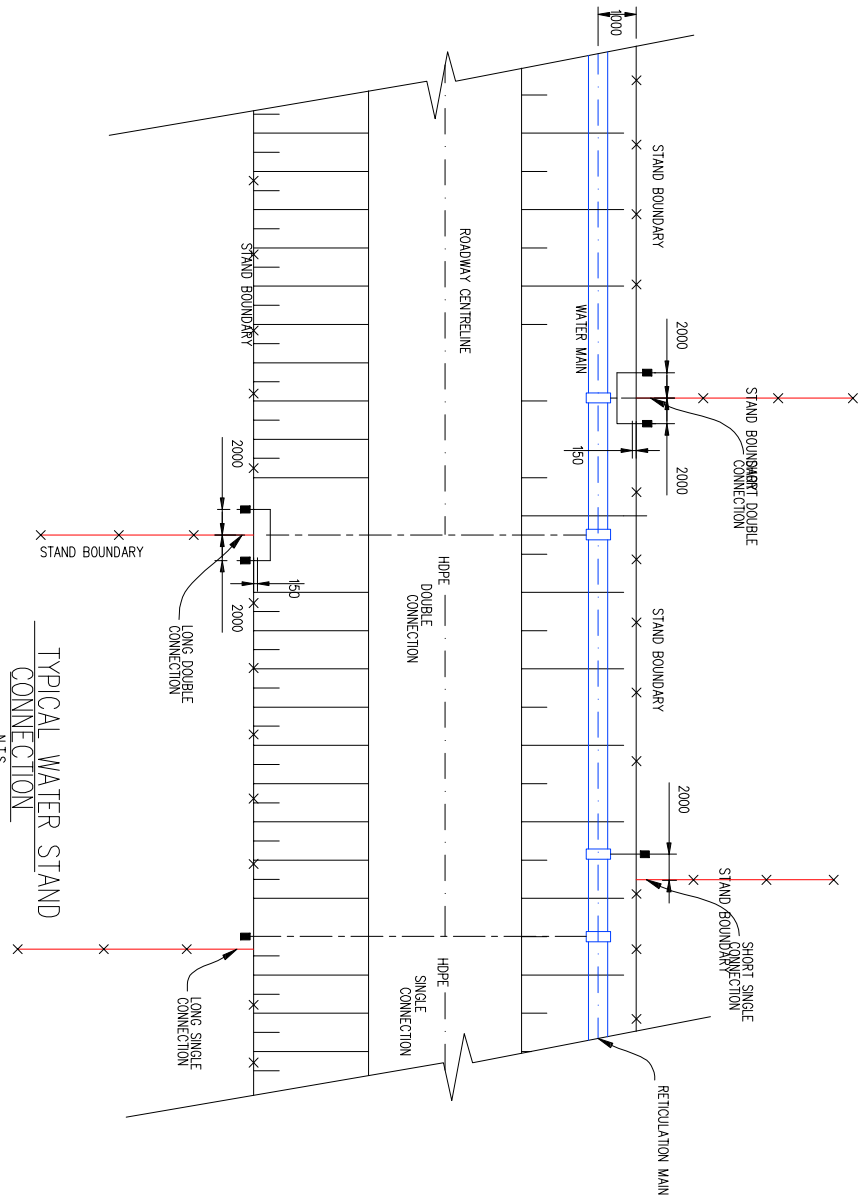


PIPE FITTING DETAILS : SINGLE CONNECTION		
NO.	DESCRIPTION	QTY.
1.1	250A SADDLE TO FIT WATER MAIN	1
1.2	250A GALV. NIPPLE	1
1.3	250A BSP BALLCOCK	1
1.4	250A MALE ADAPTOR	1
1.5	250A x 90deg COMPRESSION FITTING ELBOW	1
1.6	250A HDPE PIPE (TO CONNECT 2.5 TO 2.7)	1
1.7	250A x 20 x 250A RISING TEE	1
1.8	200A x 100mm LONG HDPE PIPE PIECE	1
1.9	200A MALE ADAPTOR	1
1.10	AGB-20 - TYPE METER BOX	1

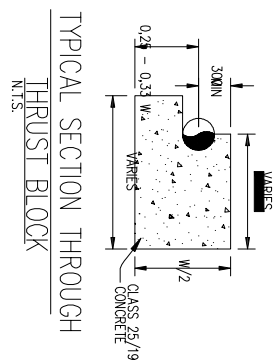
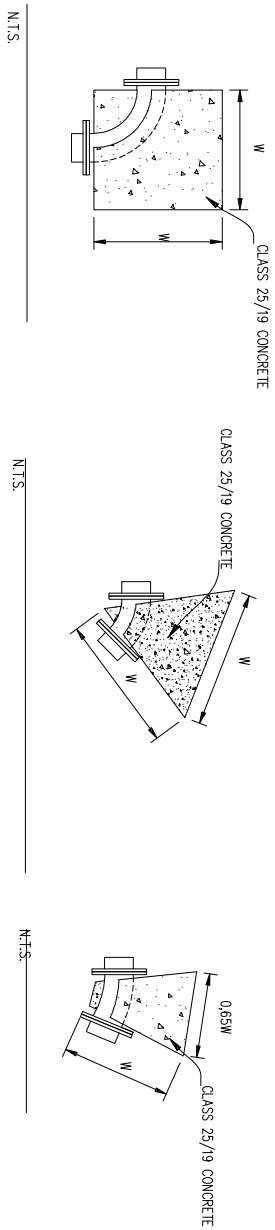
PLAN
SINGLE CONNECTION DETAILS



PIPE FITTING DETAILS : STAND PIPE.		
NO.	DESCRIPTION	QTY.
1	BRASS GARDEN TAP	1
2	FEMALE SOCKET (20 mm)	1
3	G.A.S. PIPE SECTION - THREADED BOTH ENDS (20 mm).	1
4	FEMALE THREADED G.A.S. ELBOW (20 mm).	1
5	1400 mm LONG G.A.S. PIPE SECTION THREADED BOTH ENDS (20 mm).	1
6	HOPE PRESSURE FITTING FEMALE ELBOW (20 mm).	1
7	HOPE PIPE SECTION 20 mm LONG (20 mm).	1
8	HOPE PRESSURE FITTING FEMALE ELBOW (20 mm).	1
9	HOPE PIPE SECTION FROM METER.	1



TYPICAL WATER STAND
CONNECTION
N.T.S.

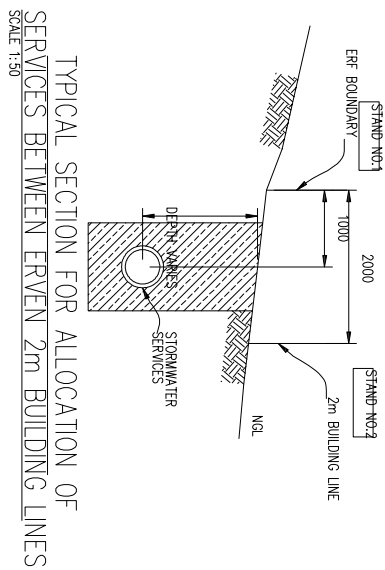
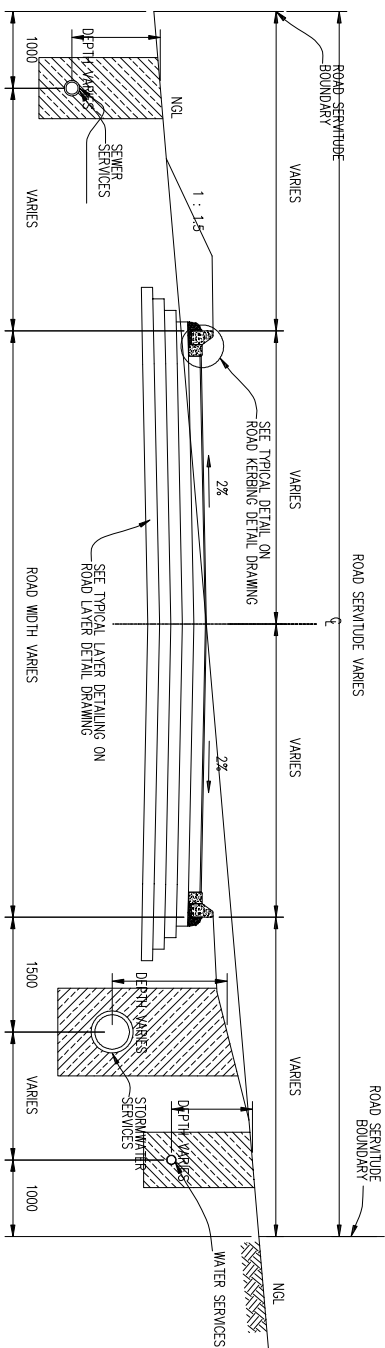


750M DiA:	$W = 0.5m$	MINIMUM
100M DiA:	$W = 0.6m$	MINIMUM
160M DiA:	$W = 0.75m$	MINIMUM
200M DiA:	$W = 0.8m$	MINIMUM
250M DiA:	$W = 0.85m$	MINIMUM
750M DiA:	$W = 0.5m$	MINIMUM
100M DiA:	$W = 0.6m$	MINIMUM
160M DiA:	$W = 0.75m$	MINIMUM
200M DiA:	$W = 0.8m$	MINIMUM
250M DiA:	$W = 0.85m$	MINIMUM

TYPICAL DESCRIPTION

NOTE:

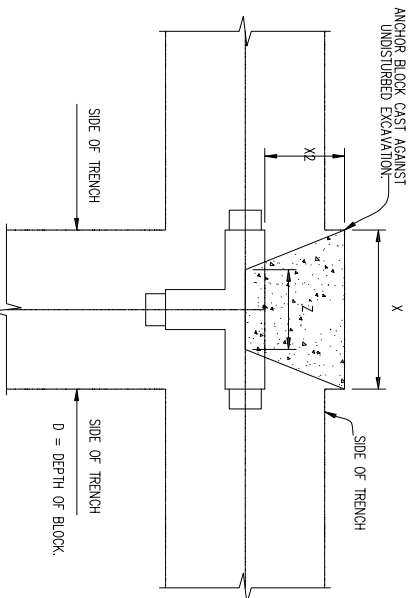
1.) ALL CONCRETE THRUST BLOCKS TO BE CLASS 20MPa, 19mm STONE.





TYPICAL SECTION FOR ALLOCATION OF
SERVICES BETWEEN ERVEN 2m BUILDING LINES
SCALE 1:50

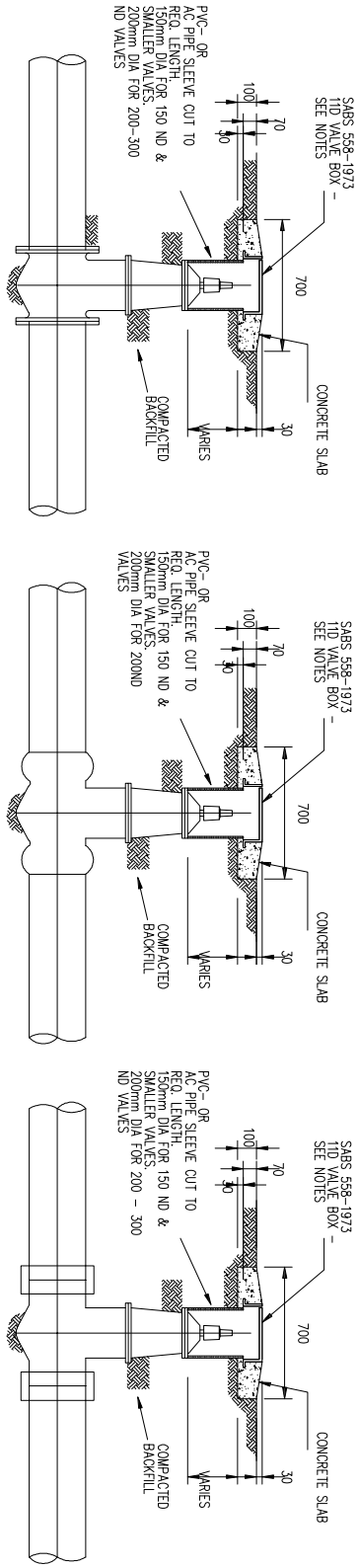
NOTES:

1. ALL SERVICES TO BE TYPICALLY ALLOCATED WITHIN THE ROAD SERVICELINE AS SHOWN ON THIS DRAWING UNLESS OTHER WISE SPECIFIED BY ENGINEER OR AS INSTRUCTED BY ENGINEER.
2. SERVICES THAT RUN BETWEEN 2 PIPES TO BE TYPICALLY ALLOCATED AS SHOWN ON THIS DRAWING WITHIN THE 2m BUILDING LINE OR UNLESS OTHER WISE SPECIFIED BY ENGINEER OR AS INSTRUCTED BY ENGINEER.
3. THE MINIMUM DISTANCE BETWEEN SERVICES TO BE 300mm.



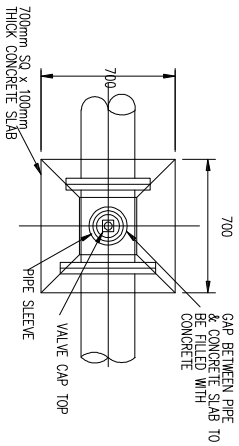
TYPICAL T-PIECE INSTALLATION DETAILS

	CLIENT										
	CHIEF ALBERT LUTHULI LOCAL MUNICIPALITY P.O.Box 24 CAROLINE 1185 Tel: +27 17 843 4000 Fax: +2717 843 4100										
	CONSULTANT:										
	74 Von Mink Street, Nelspruit Cell: 2182 7270 690 E: 211 979 5329 Fax: 2186 402 8650 Email: studies@smce.com info@smce.com										
PROJECT NAME:		REPLACEMENT OF AC PIPE IN EMPULUZI – WARD4									
DESCRIPTION:		THRUST BLOCK DETAILS									
	PROJECT No.	ALM/MCE – 04 / W1001									
	CONTRACT No.	ALMT19/2021									
	DESIGNED	T.N		No	AMENDMENTS	DATE	SCALE	SHEET			
	DRAWN	S.N		0	ISSUED FOR TENDER	11/04/2022	AS SHOWN	1 OF 1			
	CHECKED	T.S									
	DATE	APRIL 2022									
	DRAWING No		MCE/W/2/004/P2								

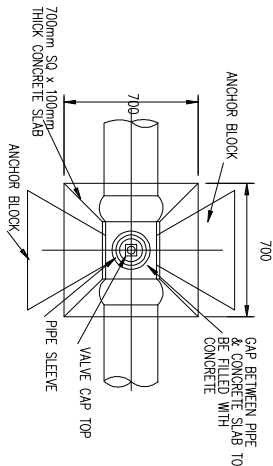


ELEVATIONS, RETICULATION VALVE AND SLEEVED VALVE CHAMBER INSTALLATION DETAILS

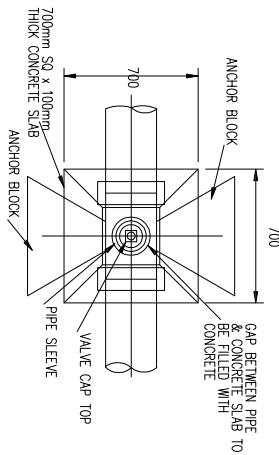
PLAN - VALVE BOX FOR
50-300ND FLANGED PIPEWORK
SCALE 1:20



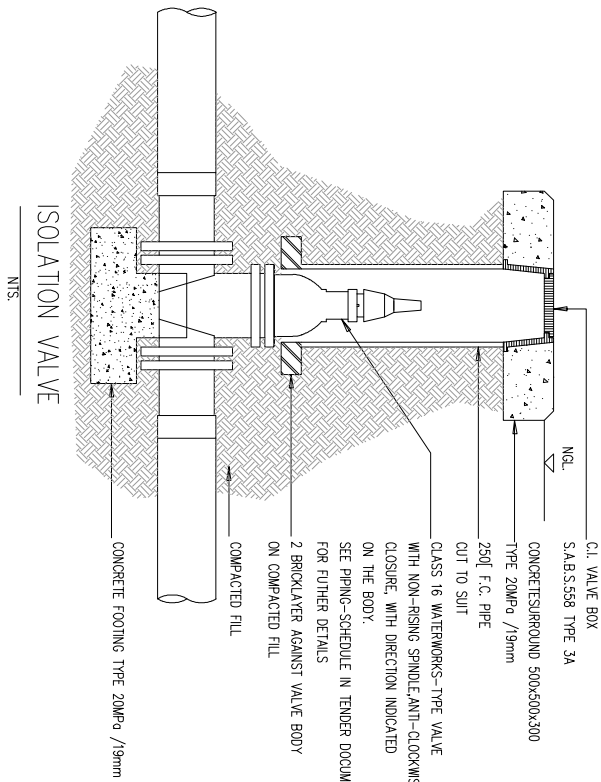
PLAN - VALVE BOX FOR
63-200ND PVC PIPEWORK
SCALE 1:20



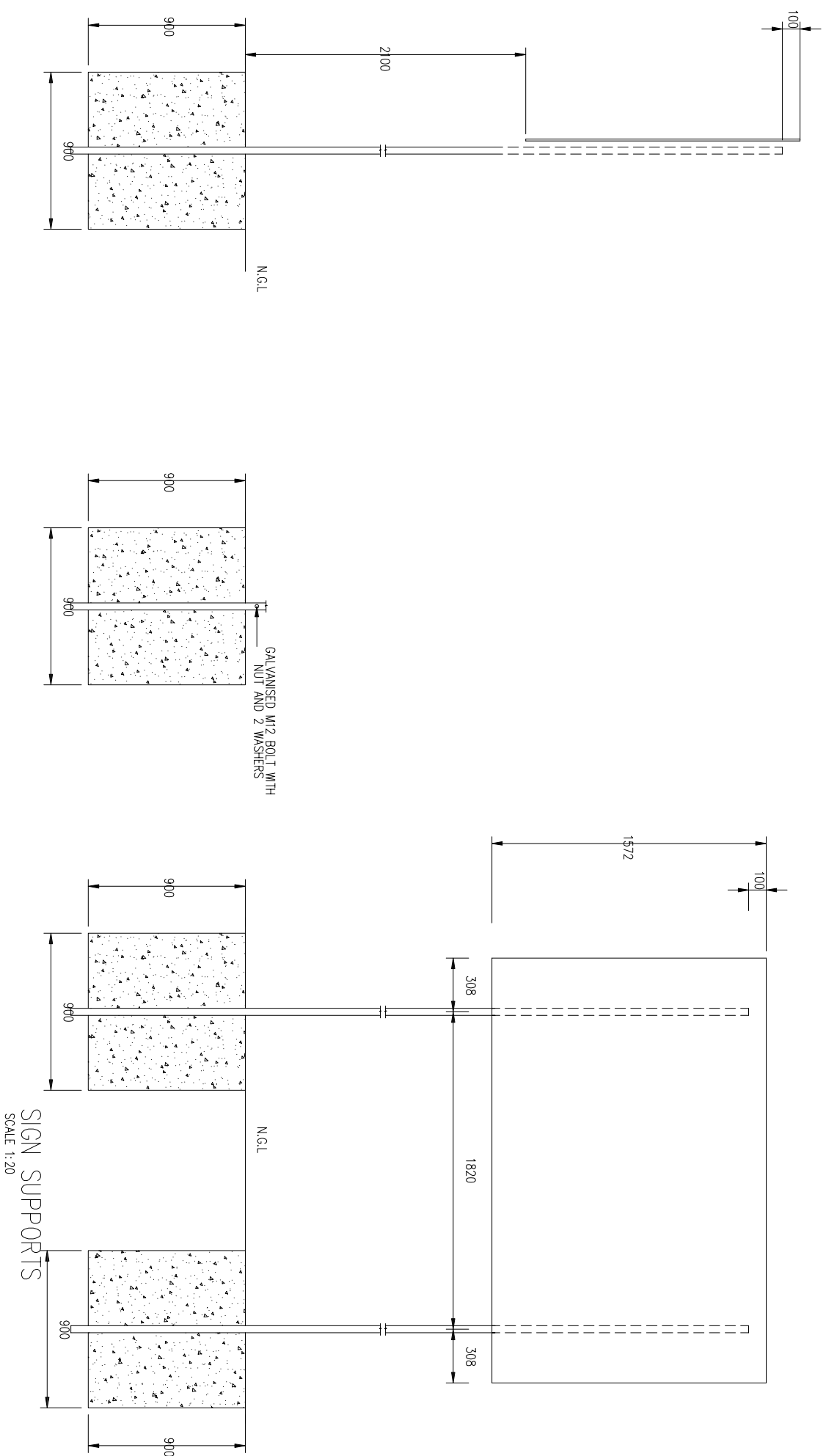
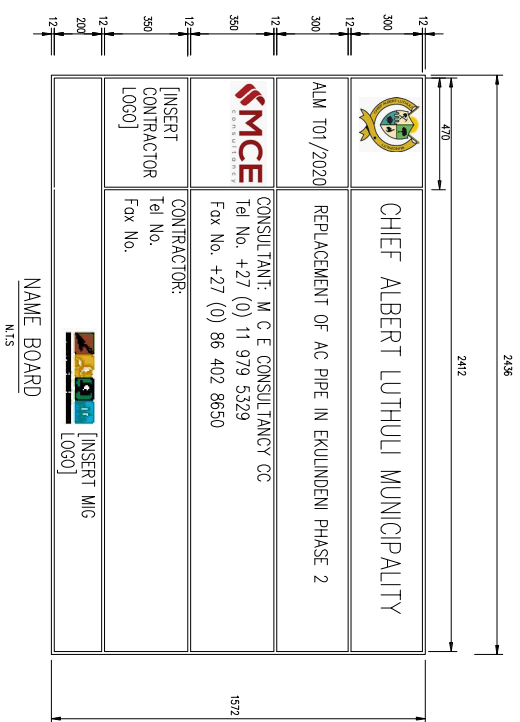
PLAN - VALVE BOX FOR
50-300ND FIBRE CEMENT PIPEWORK
SCALE 1:20



PLAN VIEW, RETICULATION VALVE AND SLEEVED VALVE CHAMBER INSTALLATION DETAILS



	CLIENT	CHIEF ALBERT LUTHULU LOCAL MUNICIPALITY										CONSULTANT:		PROJECT NAME:										PROJECT No.		DESIGNED		No		AMENDMENTS		DATE		SCALE		SHEET																						
		P.O.Box 24 CAROLINE 1185												74 Van Wilk Street, Nelspruit Call: 2782 7370 600 T el: 2711 979 5329 Fax: 2786 402 8650 Email: shouza@mce.com info@mce.com												REPLACEMENT OF AC PIPES IN EMPULUZI – WARD 4										ALM/MCE-05/M1001		DRAWN		S.N		0		ISSUED FOR TENDER		11/04/2022		AS SHOWN		1 OF 1								
		Tel: +27 17 843 4084 Fax: +2717 843 4100												VALVE CHAMBERS												CONTRACT No.										ALMT19/2021		CHECKED		T.S								DRAWING No		ALM/MCE-05/M1001								
																										DATE										APRIL 2022																						



	CLIENT CHIEF ALBERT LUTHULI LOCAL MUNICIPALITY P.O.Box 24 CAROLINE 1185 Tel: +27 17 843 4084 Fax: +2717 843 4100		CONSULTANT:  74 Von Wijk Street, Neispuit Cell: 7262 2201 600 Tel: 27 11 979 3329 Fax: 2786 402 8650 Email: info@smce.com smce@smce.com	
	PROJECT NAME: REPLACEMENT OF AC PIPE IN EMPULUZI – WARD 4		PROJECT No. ALM/MCE -06/W1001	
DESCRIPTION: CONTRACT NAME BOARD DETAIL		CONTRACT No. ALMT19/2021		
DESIGNED	T.N	No	AMENDMENTS	DATE
DRAWN	S.N	1	ISSUED FOR TENDER	11/04/2022
CHECKED	T.S			
DATE	APRIL 2022			
		DRAWING No	SCALE	SHEET
		ALM/MCE -06/W1001	AS SHOWN	1 OF 1