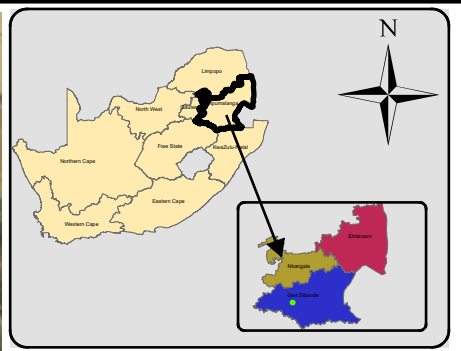
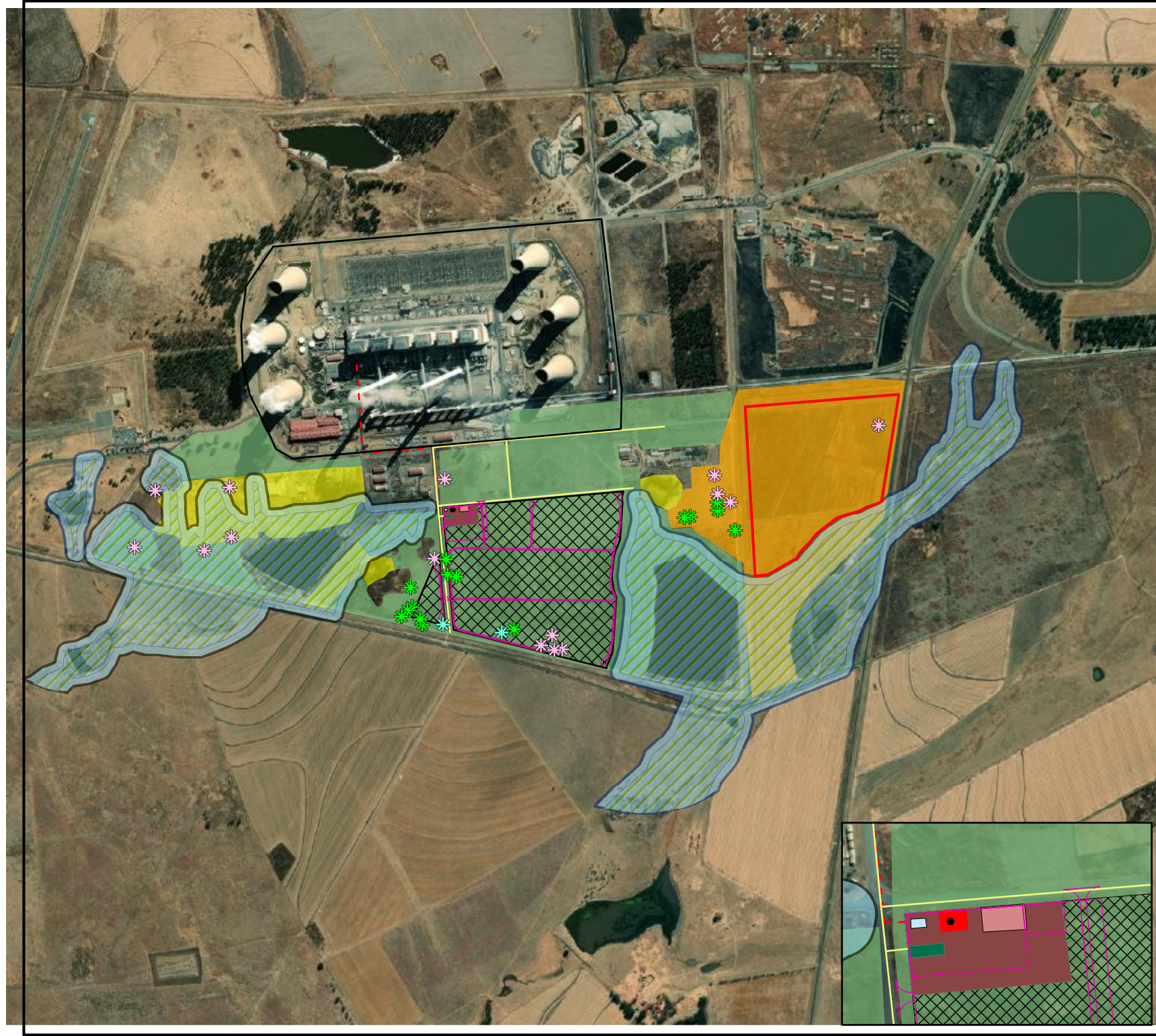


Information contained on this drawing is the copyright of Zitholele Consulting (Pty) Ltd. Unauthorised use or reproduction of this plan either wholly or in part without written permission infringes copyright. © Zitholele Consulting (Pty) Ltd.



Legend

- Tutuka Power Station
- Existing Access_Road (24m)

Site Layout

- Proposed_Relocation_for_Species_of_Conservation_Concern
- 11kV/132kV Proposed Powerline
- Proposed_Transformer_Station
- Proposed_Access_to_the_site
- Proposed Operation & Maintenance Building (workshop area)
- Proposed_Connection_Point
- Proposed_PV_Plant_Substation
- Proposed Laydown_Construction_Area
- Proposed Solar PV Panels

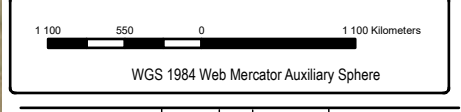
Environmental Sensitivity

Species of Conservation Concern

- Boophane disticha (Provincially Protected)
- Hypoxis hemerocallidea (Provincially Protected)
- Orchid sp (Provincially Protected)
- 30m Wetland buffer (No-go area)
- Wetland (No-go area)
- Aristida bipartita Degraded Grassland - Low Sensitivity
- Hermannia depressa Grassland - Low Sensitivity
- Aloe ecklonis Grassland - High Sensitivity

**TUTUKA SOLAR PV PLANT
&
ASSOCIATED INFRASTRUCTURE**

**COMPOSITE ENVIRONMENTAL SENSITIVITY
MAP OVERLAIN ON THE FINAL SITE LAYOUT**



	GIS	JM	16 Sep 2022	PROJECT No. 21167
	CHECK	NL	16 Sep 2022	SCALE 1:20 940
	REVIEW	NL	16 Sep 2022	A3 REV 0