


ANNEXURE: ADMIN AND RECORDS MOBILE OFFICE CONTAINER

- 6m x 4.5m
- Aircon- 18000 BTU
- Double aluminium door
- Trellidor
- Steel windows with burglar bars+ blinds 900x900
- Light switches & plugs
- Black Rubberized Flooring
- Delivery

Submitted by:



ADMIN OFFICER

Refilwe Qubuda

22/05/2025

Date

RECOMMENDED BY:



Assistant Manager: Admin & Records

Caesarine Mogorosi

22/05/2025

Date

APPROVED BY:

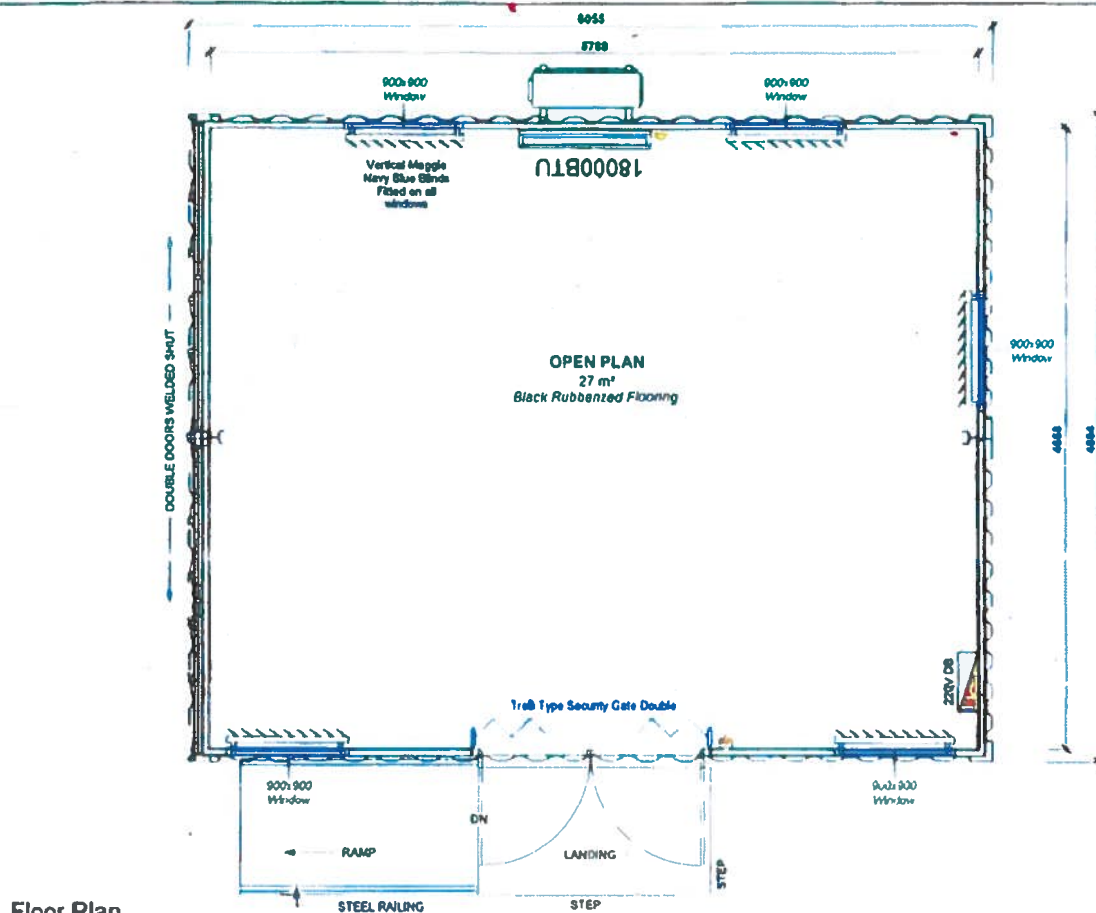


Executive: Corporate Support

N. Motlhaolwa

29/05/2025

Date



Floor Plan
1 25

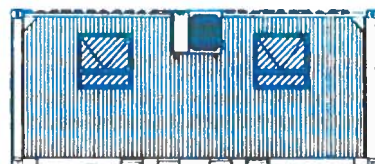
Max Height
2590

FFL
160

MGL
0



South Elevation
1 55

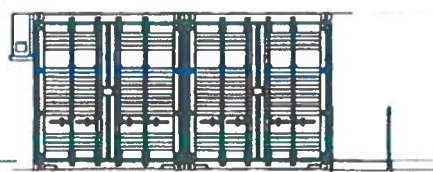


North Elevation
1 55

Max Height
2590

FFL
160

MGL
0



West Elevation
1 55

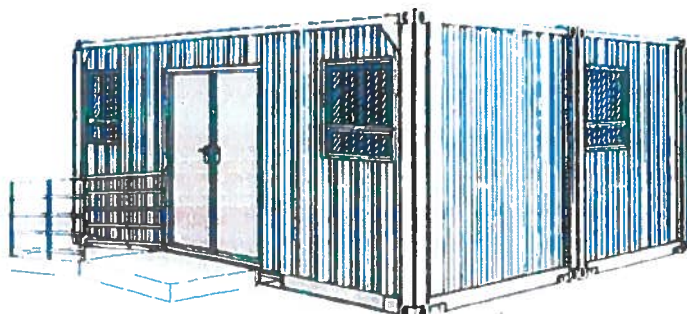
Max Height
2590

FFL
160

MGL
0



East Elevation
1 54



PRELIMINARY DRAWING