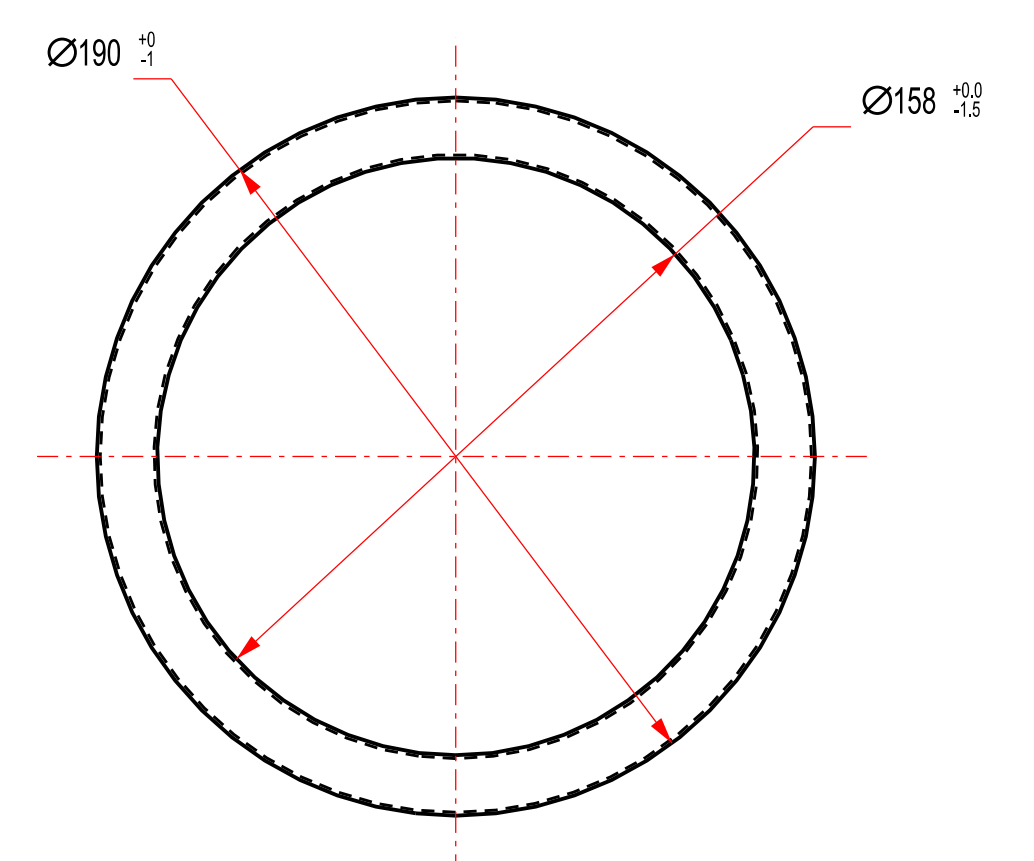
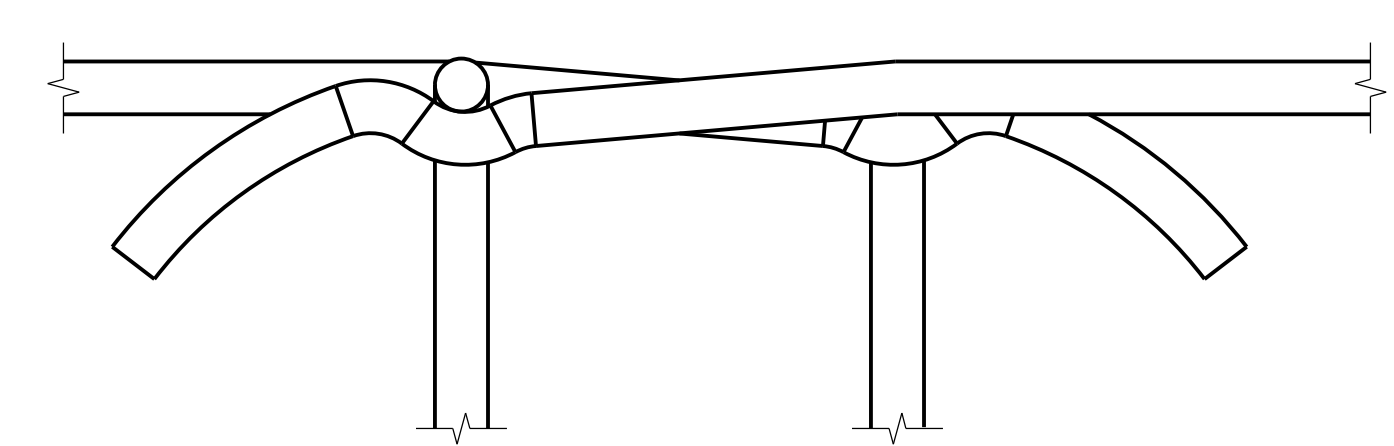
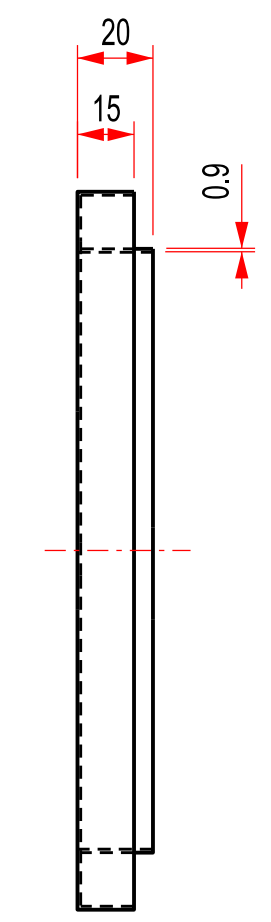


SECTION AA
SCALE 1:2

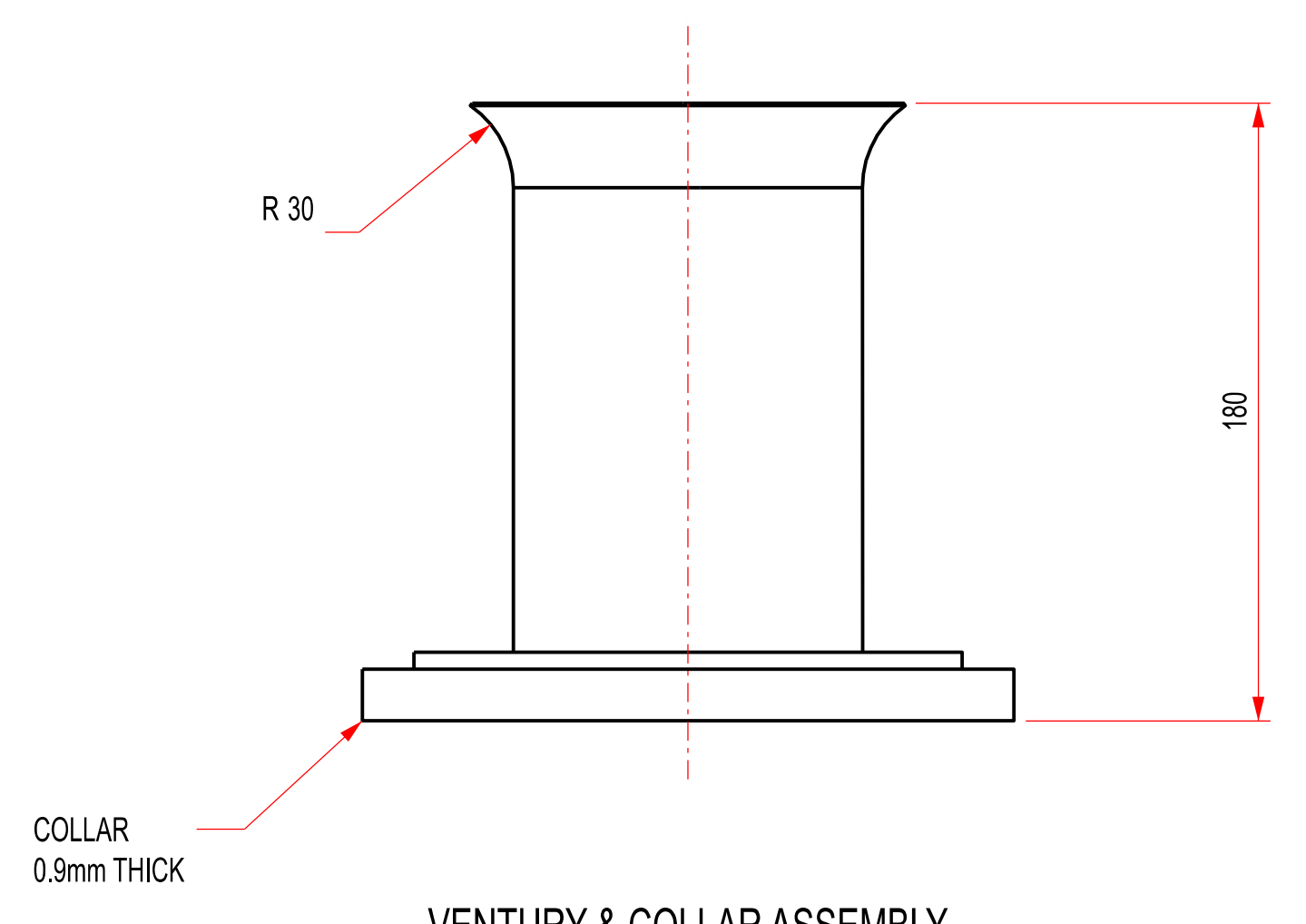


COLLAR
0.9mm THICK
SCALE 1:2

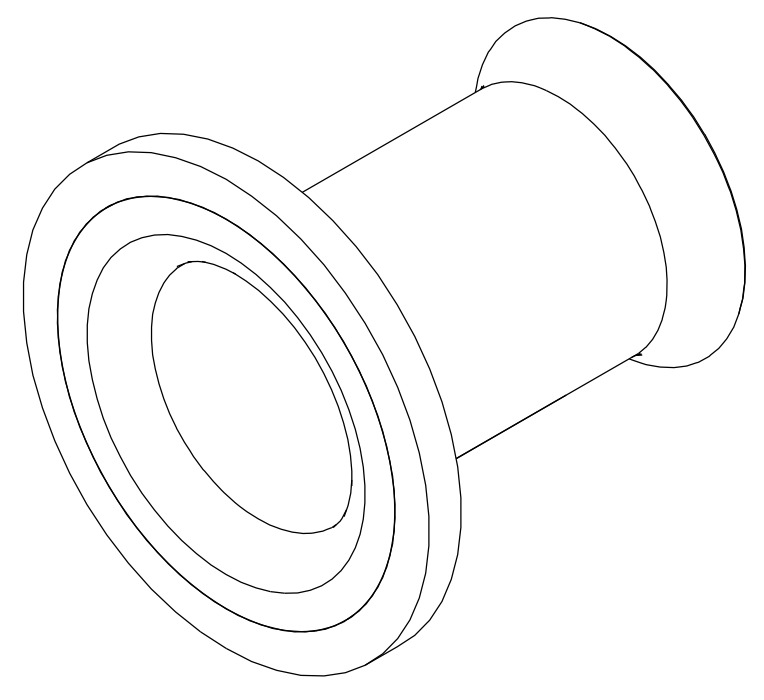


COUPLING CONNECTION
SCALE 2:1

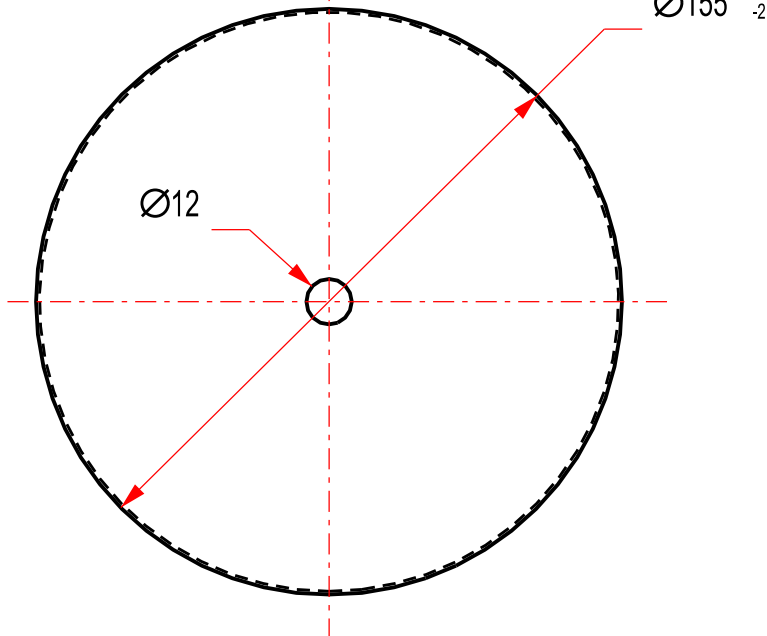
- NOTES: (UNLESS OTHERWISE STATED)
1. BREAK SHARP EDGES AND REMOVE BURRS THAT COULD DAMAGE BAG.
 2. ALL MATERIALS SHALL BE MILD STEEL.
 3. THESE ARE SUGGESTED DIMENSIONS WHICH CAN BE MODIFIED AS LONG AS THE EFFECTIVE CAGE LENGTH IS DIM 'A' WITHIN LISTED TOLERANCES AND THE MAXIMUM RING SPACING IS 'CC'.
 4. DIMENSIONS INCLUDE COATING, IF ANY.
 5. RINGS TO BE INDUCTION WELDED TO WIRES.
 6. WIRES TO BE INDUCTION WELDED TO HEM CUP.
 7. WIRES TO BE INDUCTION WELDED TO COLLAR.
 8. FINAL CAGE JOINT DIMENSIONS SEE DRAWING TO ACHIEVE SPECIFIED ASSEMBLY AND DISASSEMBLY REQUIREMENTS.
 9. CAGE STRAIGHTNESS IS MEASURED ALONG THE CAGE LENGTH FROM A REFERENCE LOCATED 25mm FROM THE CAGE TOP AND BOTTOM.
 10. COLLAR AND RINGS AT JOINTS SHALL BE PERPENDICULAR TO THE CAGE VERTICAL CENTER TO MEET CAGE STRAIGHTNESS AND PLUMBNESS.
 11. WELDING SPEC 240-106628253
 12. KNUKLE WIRES TO CONNECT TOP AND BOTTOM CAGE
 13. CAGES TO BE STAMPED AS PER SECIFICATION 474-11972



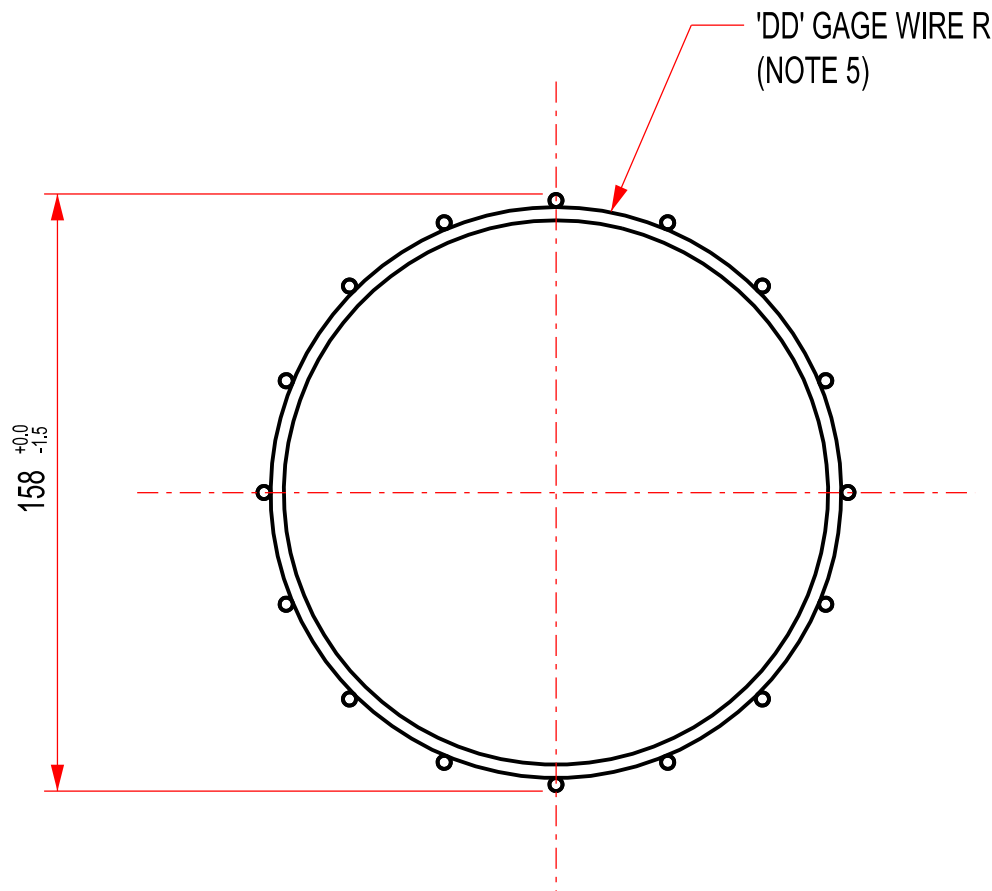
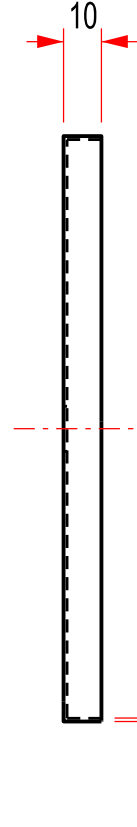
VENTURY & COLLAR ASSEMBLY
SCALE 1:2



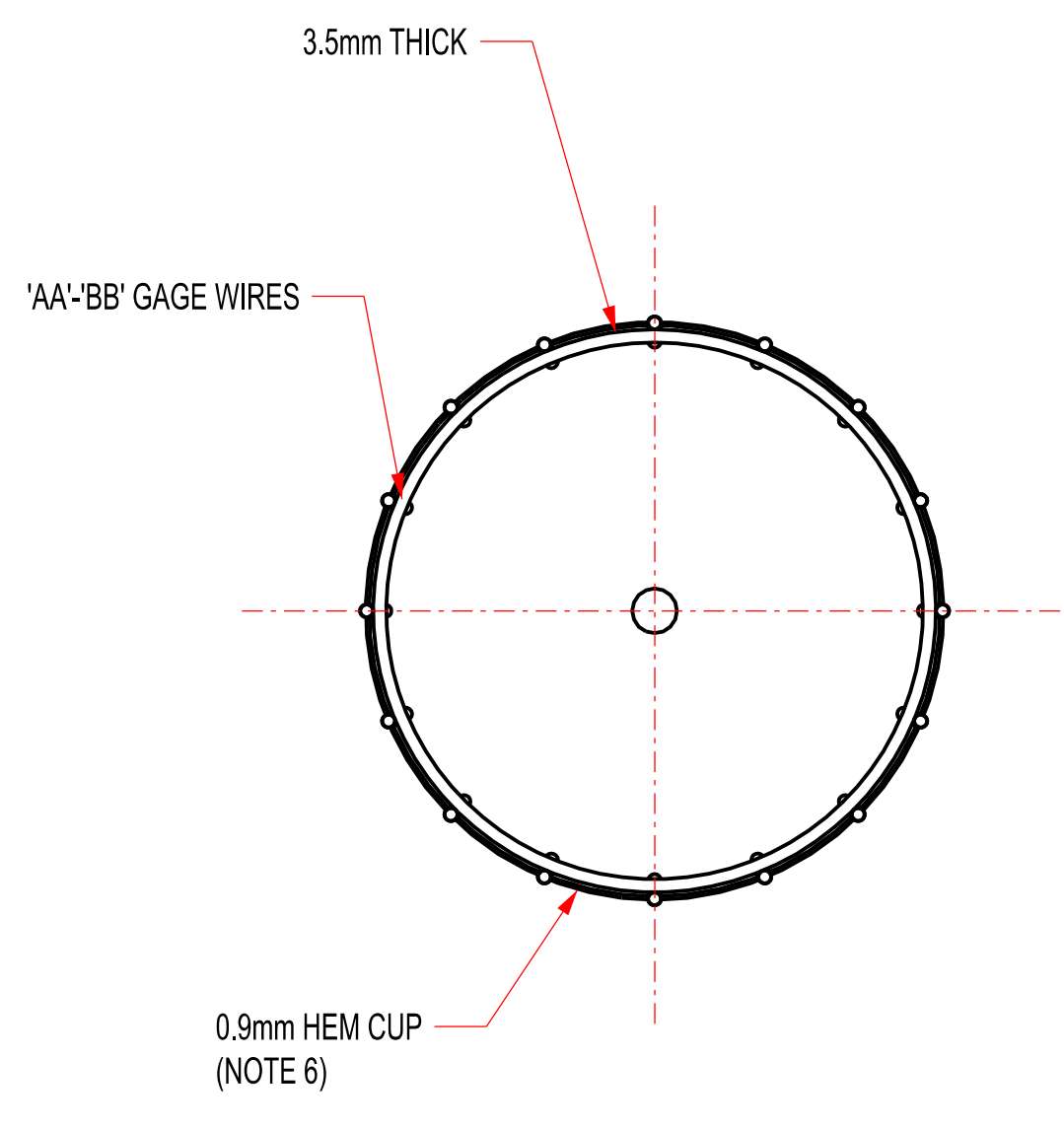
VENTURI



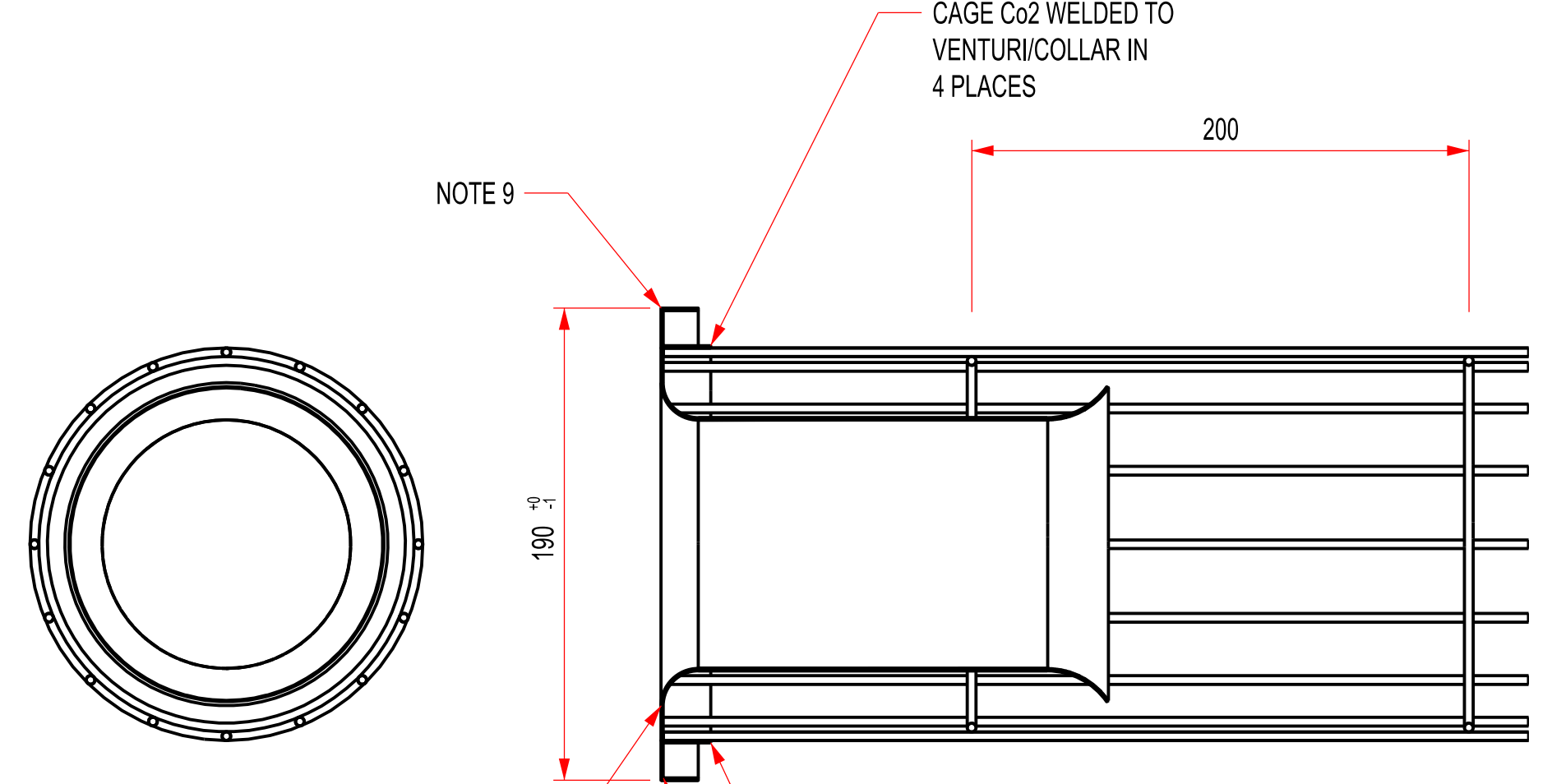
END CAP
0.9mm THICK
SCALE 1:2



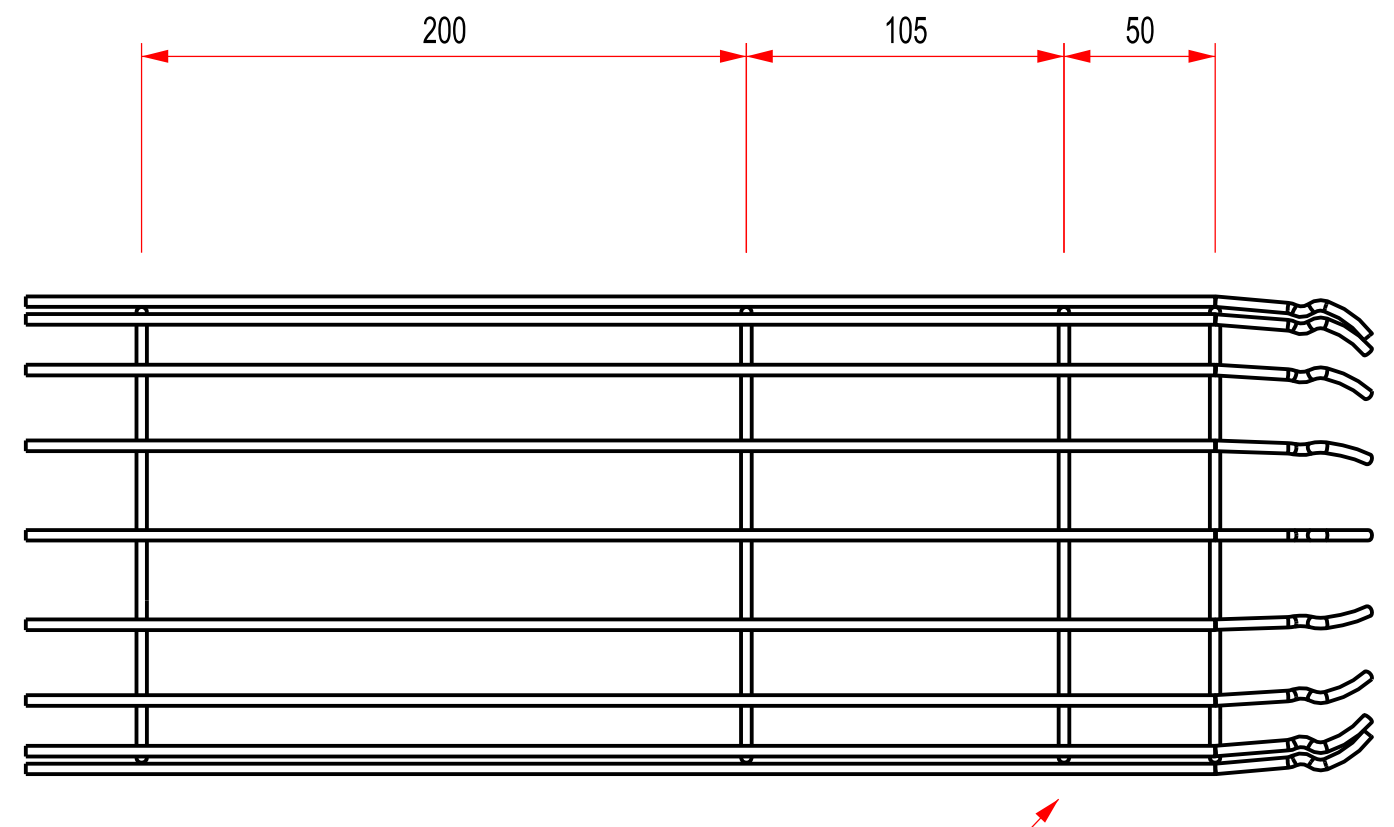
SECTION EE
SCALE 1:2



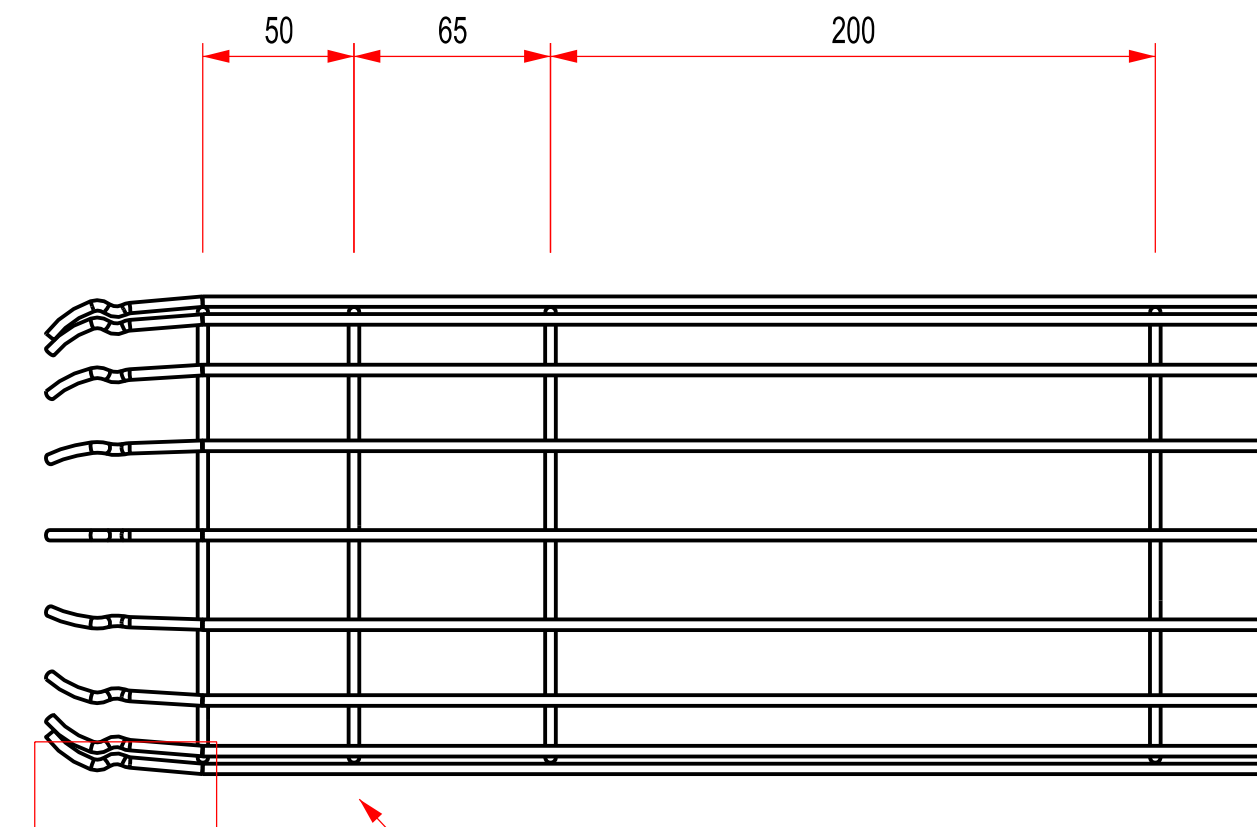
SECTION CC
SCALE 1:2



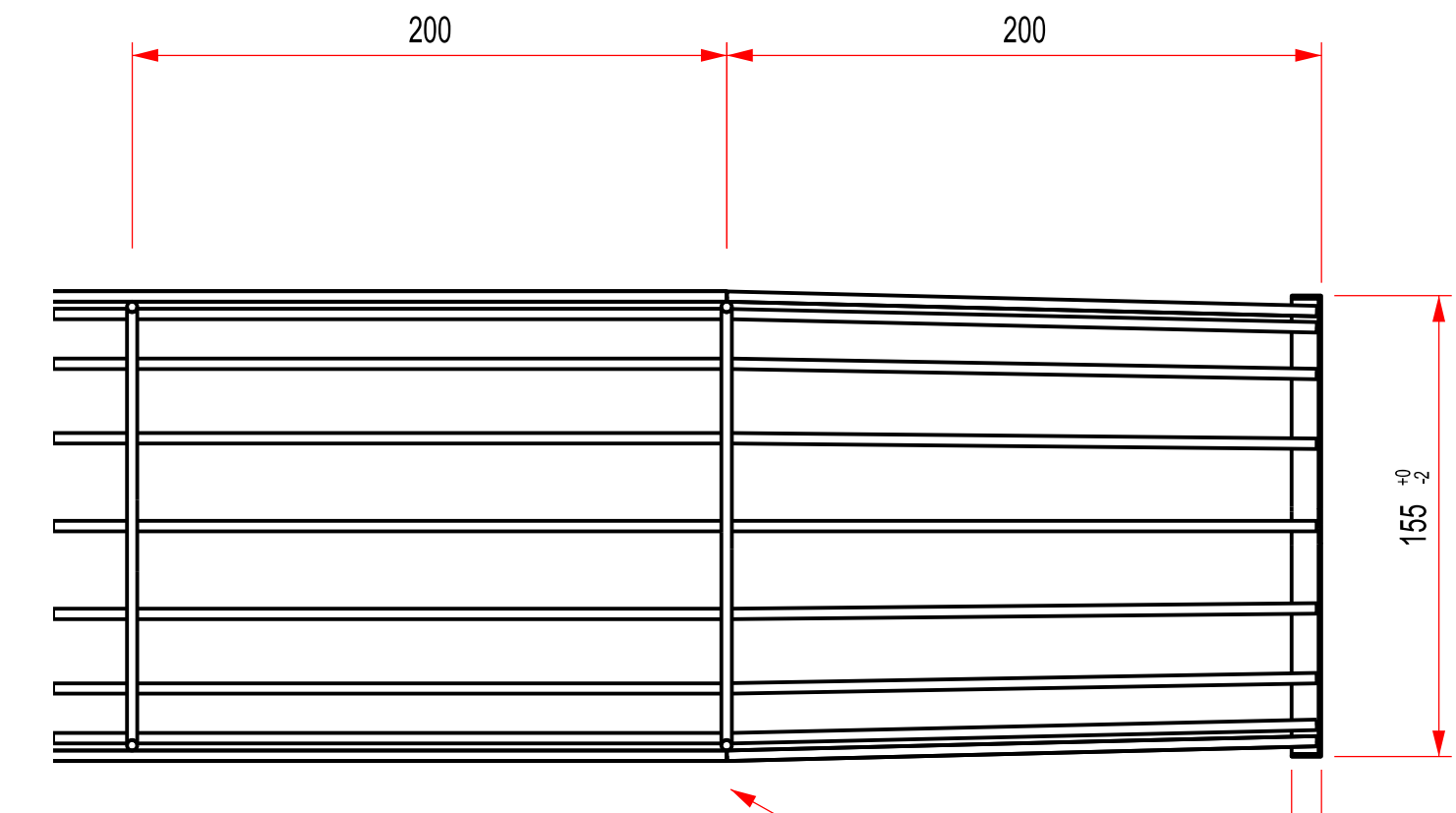
SECTION BB
SCALE 1:2



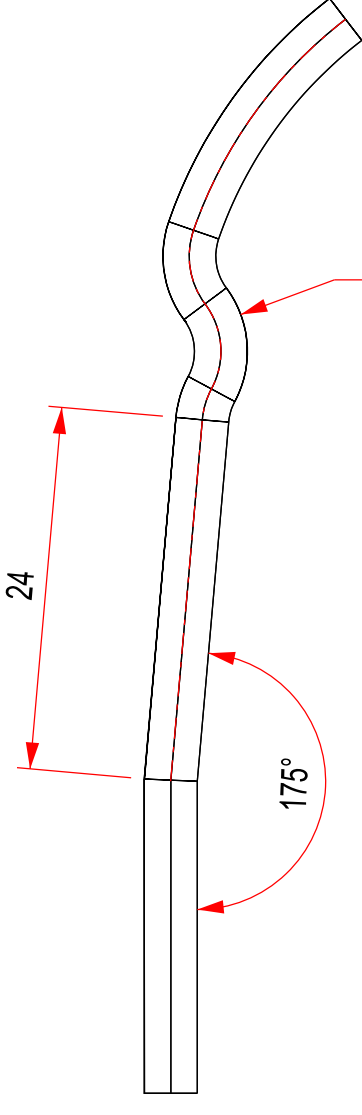
DETAIL B
SCALE 1:2



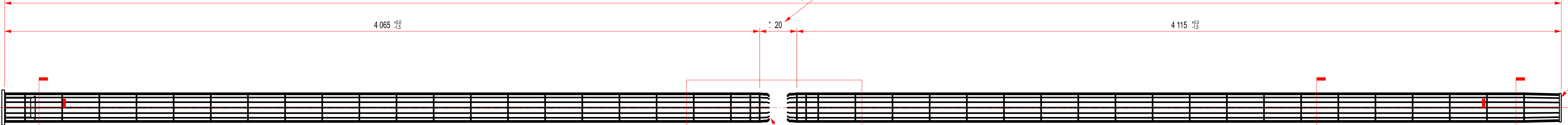
DETAIL D



SECTION KK
SCALE 1:2



CONNECTION D
SCALE 2:1



SECTION FF

SECTION EE

SECTION CC

DETAIL B

NOTE 10

GAGE EQUIVALENT			
WIRE GA	SHEET GA		MM
10	-		3.5
WIRE GA REF. ASTM A510/A510M SHEET GA REF. ASTM A109/A109M			

WIRE GAGE AND COUPLING CONNECTIONS							
COMPONENT REFERENCE	AA	BB	-	CC	DD	-	COUPLING CONNS TYPE A
CAGE SIZE DESIGNATION	NUMBER OF WIRES	GAGE	EQUIVALENT WIRE DIA	RING SPS (MAXIMUM)	GAGE	EQUIVALENT WIRE DIA	DOUBLE ENDED (NOTE 1)
16-WIRE	16	10	3.5mm	200mm	10	3.5mm	YES

CAGE CONSTRUCTION	
CAGE SIZE DESIGNATION	DESCRIPTION
16 WIRE	16 VERTICAL WIRES, 10 GA BWG: 3.5 MM DIAMETER. HORIZONTAL WIRE RINGS SPACED AT 200 MM MAX., 10 GA BWG: 3.5 MM DIAMETER. ALL WIRES COATED SKS BLACK EDGING PRIMER SNK10, FERRO-PAK615 OR APPROVED EQUIVALENT

TOLERANCES	
UNLESS STATED OTHERWISE DIMENSIONS ARE IN MM AND THE FOLLOWING TOLERANCES SHALL APPLY:	
FRACTIONS - LINEAR	± 1.5 & DIAMETRAL ± 0.381
DECIMAL - X.XX	± 0.762 / X.XXX ± 0.254
ANGULAR - $\pm 1/4^\circ$	

20	01	2018-08	DESIGNING CHANGED	MM	EP	MM	SC	JM	ISSUED TO RE-USE ONLY
20	02	2018-08	DATE MANUFACTURING DATA REVIEWED	MM	EP	MM	SC	JM	ISSUED TO RE-USE ONLY
D.O.	REV	DATE	REVISION	REV	CHKD	APP	AUTH	KAS	REFERENCE DRAWINGS
AUTHORISED FOR DESIGN BY:			CLASSIFICATION			KUSILE POWER STATION			
COODIFICATION BY:			PES PATH			GENERAL ARRANGEMENT			
APPROVED BY:			HDD			UNITS 1-6 PJFF			
CHECKED BY:			HDD			16 WIRE CAGES			
CREATED BY:			HDD			FOR 160mm BAGS			
SCALE			AS SHOWN			Eskom			
20			20			SKETCH DRAWING NO			
20			20			366-263277			
20			20			SHT			
20			20			01			
20			20			REV			
20			20			03			

DRAWING CLASSIFICATION: CONTROLLED DISCLOSURE