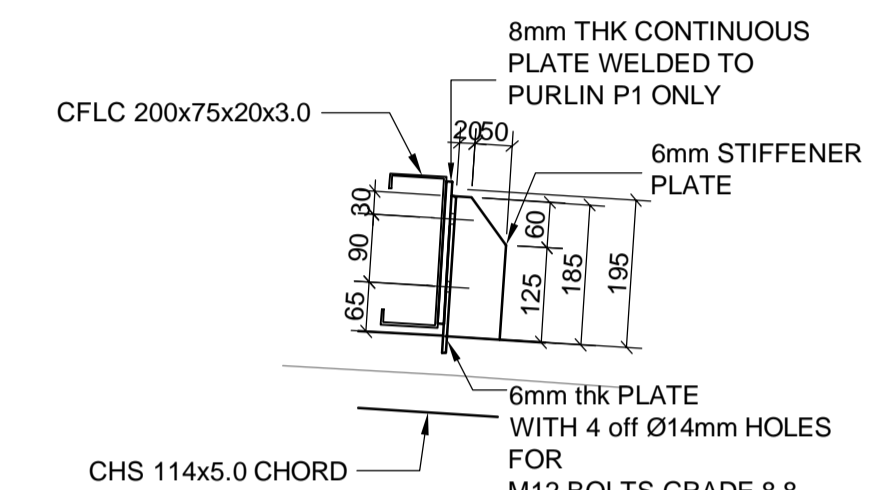


DO NOT SCALE - IF IN DOUBT, ASK

**GENERAL STRUCTURAL STEEL NOTES**

- THIS DRAWING MUST BE READ IN CONJUNCTION WITH LATEST ARCHITECT'S DRAWINGS.
- STRUCTURAL STEELWORK SHALL COMPLY WITH THE REQUIREMENTS OF SANS 2005-CS1
- DIMENSIONS TO BE CHECKED ON SITE AND ANY DISCREPANCIES BROUGHT TO THE ENGINEER'S NOTICE.
- ALL STEELWORK TO BE ABRASIVE BLASTED TO Sa 2 1/2
- GALVANISE ALL STEELWORK TO SABS 763 (HEAVY DUTY)
- ALL STEELWORK SHALL BE GRADE S355JR.
- ALL BOLTS SHALL BE GRADE 8.8 GALVANISED U.N.O. AND SHALL HAVE NOT LESS THAN 3 FULL THREADS PROTRUDING BEYOND NUT.
- ALL WELDS SHALL BE 6mm CONTINUOUS FILLET WELDS.
- ALL LEVELS AND DIMENSIONS TO EXISTING STRUCTURES MUST BE CHECKED ON SITE BEFORE FABRICATION OR ERECTION.
- NO FLAME CUTTING OR SITE WELDING SHALL BE CARRIED OUT WITHOUT THE WRITTEN APPROVAL OF THE ENGINEER.
- STRUCTURAL SHOP DETAILS TO BE SUBMITTED TO ENGINEER FOR APPROVAL PRIOR TO FABRICATION.

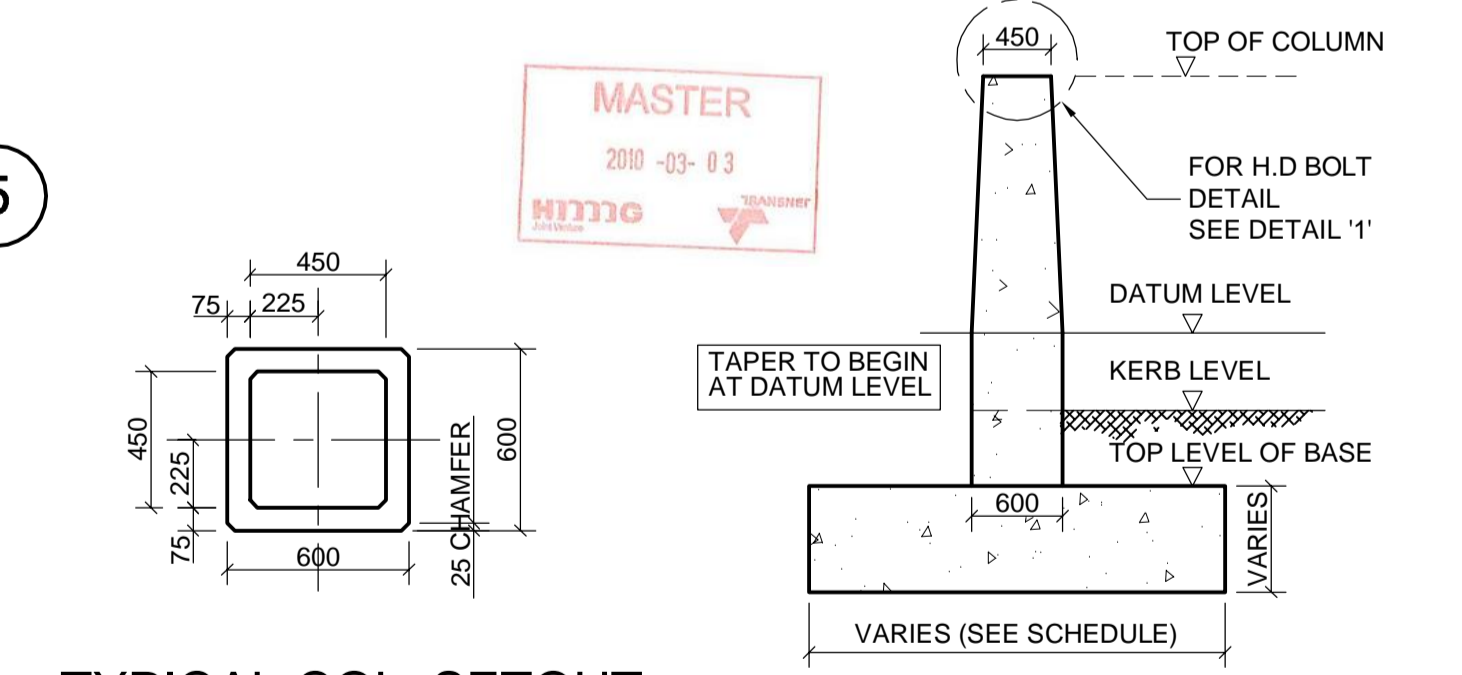
MARK	MEMBER	SECTION SIZE	REMARKS
P1	PURLIN	200x75x20x3.0 CFLC	WITH 8mm PLT WELDED
P2	PURLIN	200x75x20x3.0 CFLC	-----
RB	RAFTER BRACING	Ø60x3.0 CHS	-----
SA	SAG ANGLE	40x40x3L	-----
KB	KNEE BRACE	Ø60x3.0 CHS	-----



**TYPICAL PURLIN CONNECTION DETAIL**  
SCALE 1:10

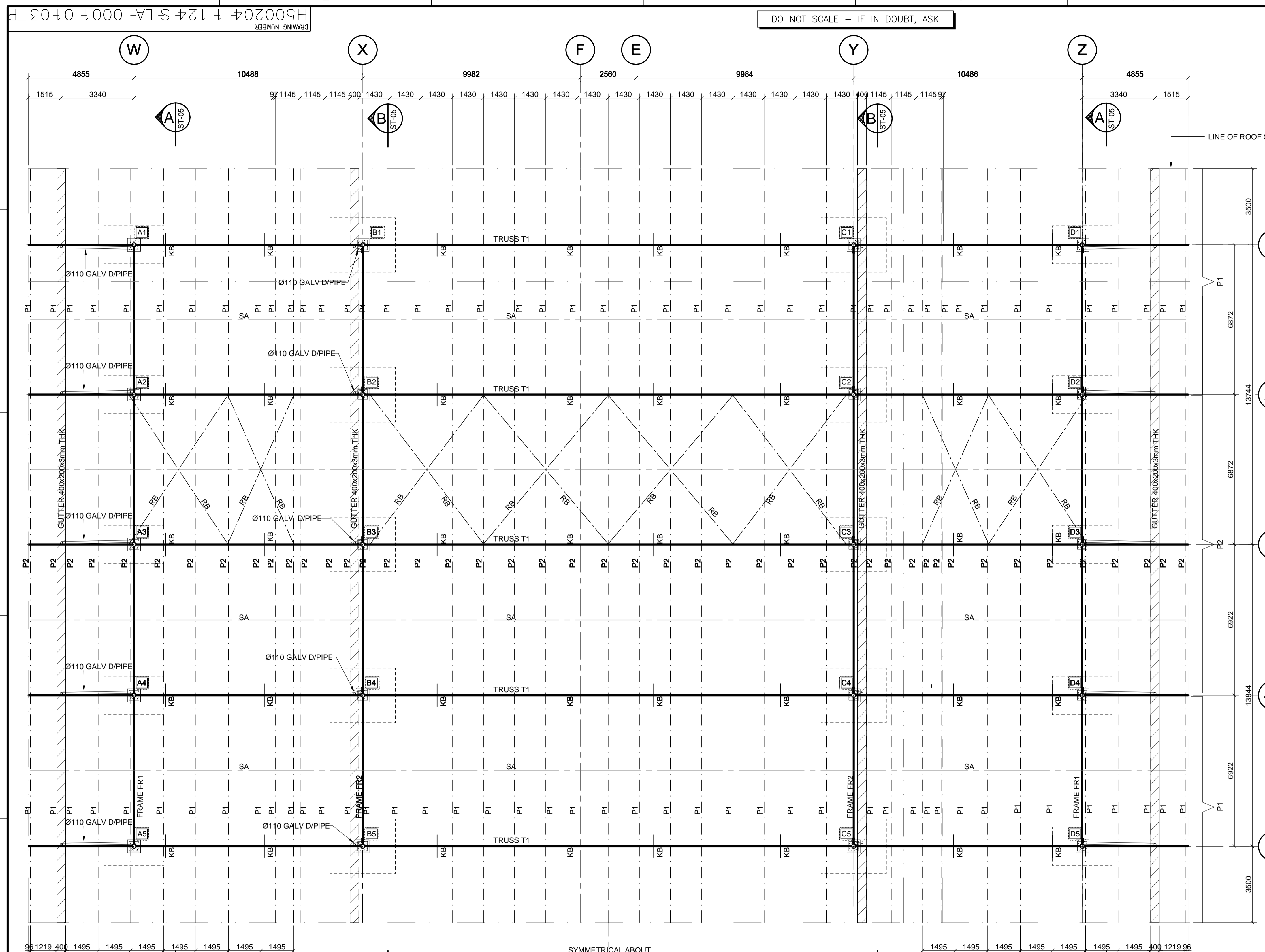
**COLUMN AND BASE SCHEDULE**

COLUMN NUMBER	COLUMN SIZE	BASE SIZE	TOP LEVEL OF KERB	TOP LEVEL OF COLUMN	TOP LEVEL OF BASE	DATUM LEVEL
A1	600x600 (BOT.) to 450x450 (TOP)	2750x1750x800	+43,383	+45,278	+41,875	+43,483
A2	600x600 (BOT.) to 450x450 (TOP)	2750x1750x800	+43,349	+45,278	+41,875	+43,483
A3	600x600 (BOT.) to 450x450 (TOP)	2750x1750x800	+43,315	+45,278	+41,875	+43,483
A4	600x600 (BOT.) to 450x450 (TOP)	2750x1750x800	+43,280	+45,278	+41,875	+43,483
A5	600x600 (BOT.) to 450x450 (TOP)	2750x1750x800	+43,245	+45,278	+41,875	+43,483
B1	600x600 (BOT.) to 450x450 (TOP)	3000x2500x1000	+43,173	+46,693	+42,085	+43,273
B2	600x600 (BOT.) to 450x450 (TOP)	3000x2500x1000	+43,139	+46,693	+42,085	+43,273
B3	600x600 (BOT.) to 450x450 (TOP)	3000x2500x1000	+43,105	+46,693	+42,085	+43,273
B4	600x600 (BOT.) to 450x450 (TOP)	3000x2500x1000	+43,070	+46,693	+42,085	+43,273
B5	600x600 (BOT.) to 450x450 (TOP)	3000x2500x1000	+43,035	+46,693	+42,085	+43,273
C1	600x600 (BOT.) to 450x450 (TOP)	3000x2500x1000	+42,723	+46,693	+42,085	+43,273
C2	600x600 (BOT.) to 450x450 (TOP)	3000x2500x1000	+42,689	+46,693	+42,085	+43,273
C3	600x600 (BOT.) to 450x450 (TOP)	3000x2500x1000	+42,655	+46,693	+42,085	+43,273
C4	600x600 (BOT.) to 450x450 (TOP)	3000x2500x1000	+42,620	+46,693	+42,085	+43,273
C5	600x600 (BOT.) to 450x450 (TOP)	3000x2500x1000	+42,585	+46,693	+42,085	+43,273
D1	600x600 (BOT.) to 450x450 (TOP)	2750x1750x800	+42,513	+45,278	+41,875	+43,483
D2	600x600 (BOT.) to 450x450 (TOP)	2750x1750x800	+42,479	+45,278	+41,875	+43,483
D3	600x600 (BOT.) to 450x450 (TOP)	2750x1750x800	+42,445	+45,278	+41,875	+43,483
D4	600x600 (BOT.) to 450x450 (TOP)	2750x1750x800	+42,410	+45,278	+41,875	+43,483
D5	600x600 (BOT.) to 450x450 (TOP)	2750x1750x800	+42,375	+45,278	+41,875	+43,483



**TYPICAL COL. SETOUT**  
SCALE 1:25

**TYPICAL BASE DETAIL**  
SCALE 1:50



**PLAN - ROOF STEELWORK**  
SCALE 1:100

TO BE CONSTRUCTED AS PART OF C011

DRAWING NO.	REFERENCE DRAWINGS
H500204-1-124-C-DE-0003-01-TP	GENERAL NOTES AND DETAILS
H500204-1-124-S-DE-0001-02-TP	MAIN CANOPY STRUCTURE STEEL SECTIONS AND DETAILS
H500204-1-124-S-DE-0001-01-TP	MAIN CANOPY STRUCTURE STEEL SECTIONS AND DETAILS

NO.	DESCRIPTION	BY	CHK'D	APP'D	DATE
03	FOR RECORD	SVH	WJ		2010.02.09
02	FOR CONTRACTORS MARK-UP	SVH	WJ		09.12.02
01	BASE DETAIL & SCHEDULE REVISED	BG	WJ		09.07.08
00	FOR CONSTRUCTION	BG	WJ	AE	08.06.30

EPCM CONSULTANT: TRANSNET PROJECTS				ORIGINATOR: WSP STRUCTURES AFRICA			
TITLE	NAME	SIGNATURE	DATE	TITLE	NAME	SIGNATURE	DATE
LEAD DES. ENG.				DRAWN	SVH		08/04/17
ENG. COORD.				CHECKED	WJ.		08/04/23
ENG. MANAGER				ENG. COORD.			
AREA MANAGER				DISCIP. ENG.			
PROJECT MGR.				ENG. MANAGER			
DIVISION				AREA MANAGER			
DIV.	TITLE	NAME	SIGNATURE	DATE	PR. ENG. / PR. TECH.		
					NAME	A ELLMER	DATE
					SIGNATURE		08/04/23
					REG. NUMBER	780374	
					SCALE		

REVISIONS / ISSUE AUTHORIZATION									
NO.	DESCRIPTION	BY	CHK'D	APP'D	DATE				

503516-PEP-ST-03

**TRANSNET**  
TRANSNET PROJECTS

PORT OF NGQURA-PORT INFRASTRUCTURE

PORT BUILDINGS: (NPA)  
PORT ENTRANCE PLAZA  
MAIN CANOPY STRUCTURES  
STEEL LAYOUT AND DETAILS

PROJECT NUMBER	DV	FBS	DIS	TYPE	DRG. NO.	SHT.	REV.	ID
H500204	1	1	2	S-LA	0001	01	03	TP

DATE: 2006/12/05