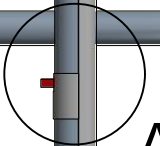
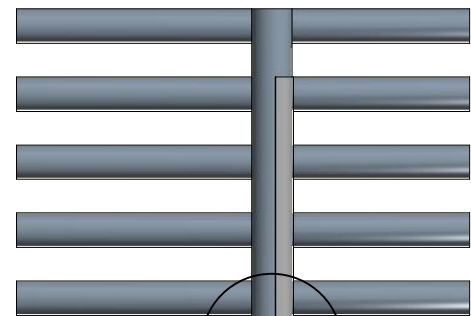
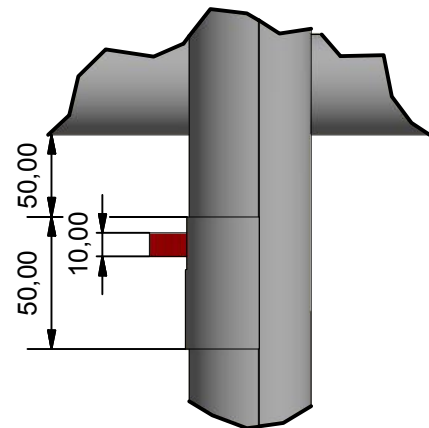


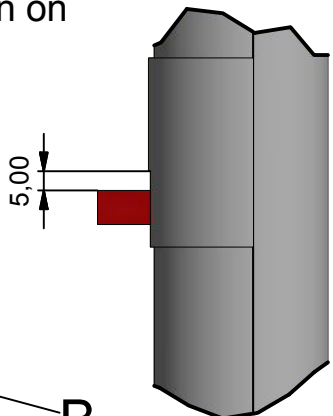
SUPERHEATER 2



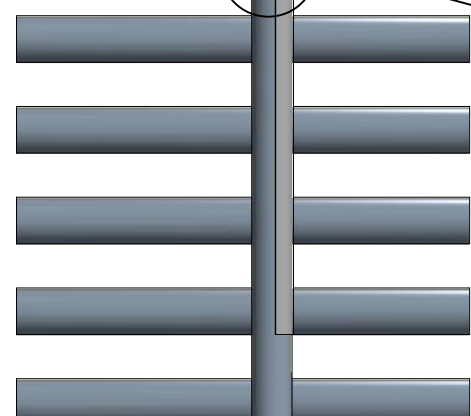
A



NB: Stopper Block MUST be fitted with a 5mm gap between shield and stopper block as shown on the sketch.

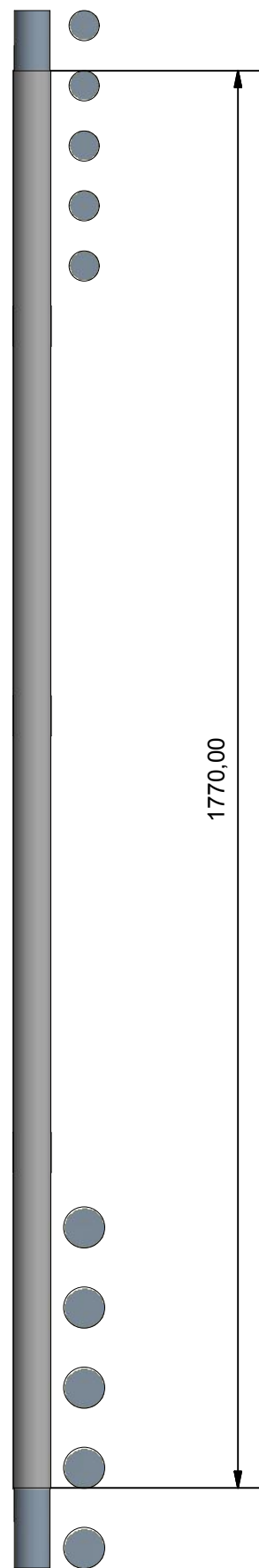


B

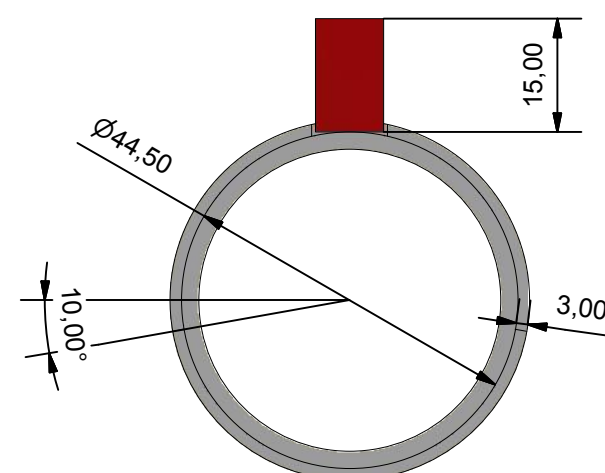


REHEATER 2

ITEM	STOCK NO	MATERIAL	O/D	WT	MIN 't
SHIELD	NA	310 STAINLESS STEEL	50.5	3	NA
STOPPER BLOCK	NA	13CrMo44	NA	NA	NA

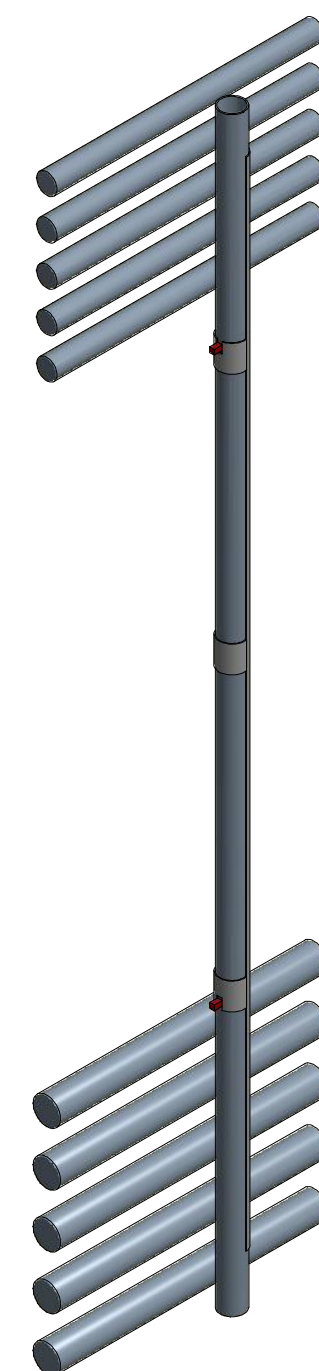


1770,00




NB: See sketch for placement of shield, and shield has to face the soot blower perpendicular.

The bangle need to be fitted 50mm from the tubes



ELEMENT#	ST
TUBE#	NA

THIS DRAWING IS THE PROPERTY OF CARAB TECHNOLOGIES. IT MAY NOT BE ALTERED, COPIED OR ISSUED TO THIRD PARTIES WITHOUT THE WRITTEN CONSENT OF CARAB TECHNOLOGIES

DRAWN BY:	MB Pretorius	CHECKED BY:	DJP Huysamen	APPROVED BY:	AW Claassens
		TITLE: 67ml Sling Tube Shield-Rev1 TUTUKA POWER STATION		ESKOM DWG REF: 0.61_02133_REV2	
CARAB TECHNOLOGIES		DATE:	22/08/2011	SCALE:	NA
				CARAB DWG NO: TUT-PP-GEN-123	