

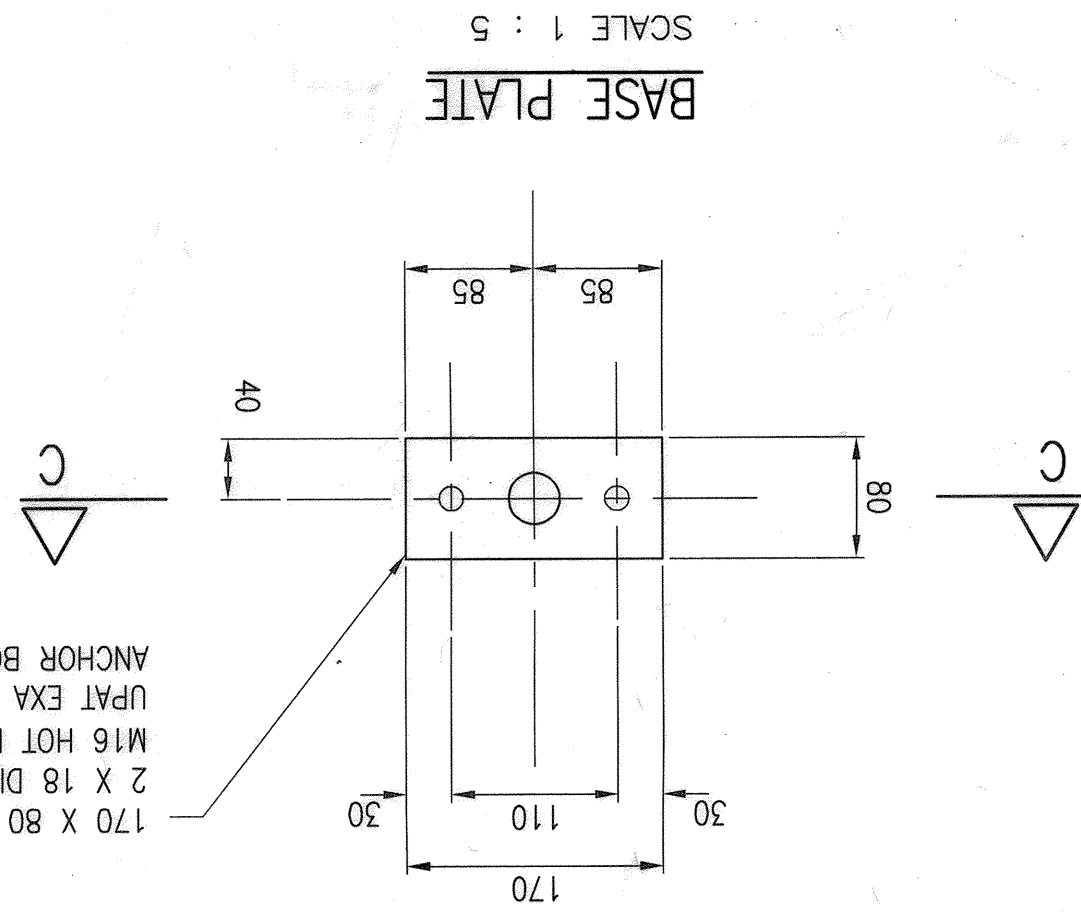
1. STEELWORK GRADES:
 - (a) BASE PLATE - GRADE 300W
 - (b) CIRCULAR HOLLOW SECTION - COLD FORMED COMMERCIAL GRADE
2. ALL WELDING TO BE METAL ARC WELDING IN ACCORDANCE WITH SABS 455-1983
3. HOT DIP GALVANIZING TO BE IN ACCORDANCE WITH SABS 763-1977

COMMERCIAL GRADE

2. ALL WELDING TO BE METAL ARC WELDING
IN ACCORDANCE WITH SABS 455-1983

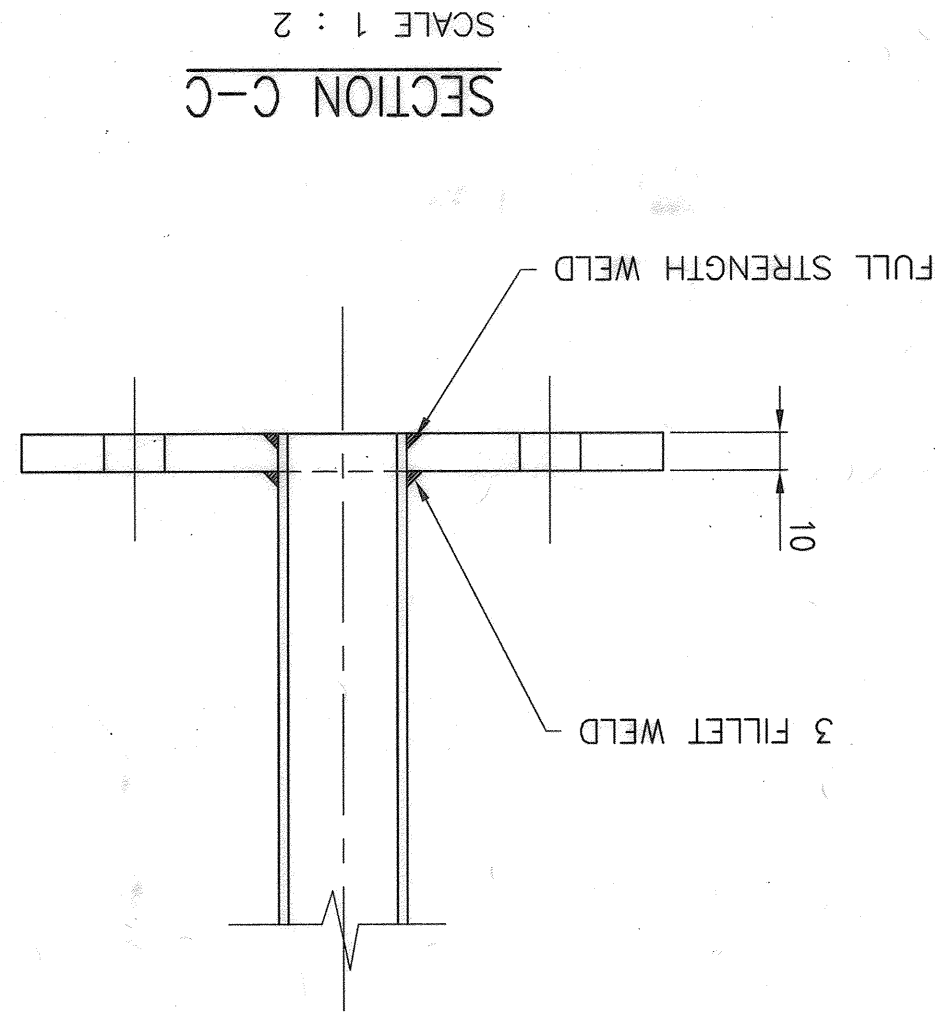
3. HOT DIP GALVANIZING TO BE IN ACCORDANCE WITH SABS 763-1977

IN ACCORDANCE WITH SABS 763-1977

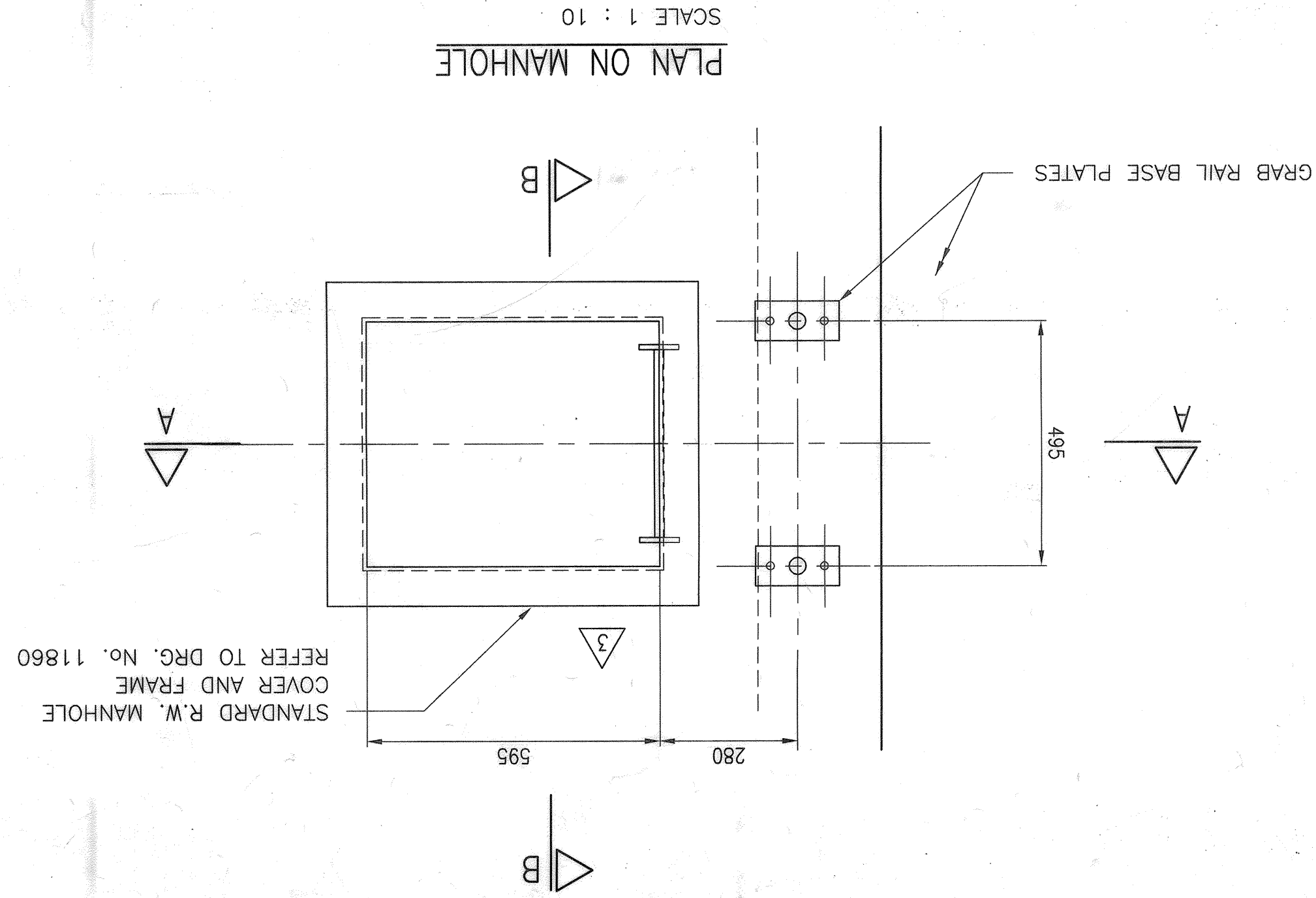


BASE PLATE

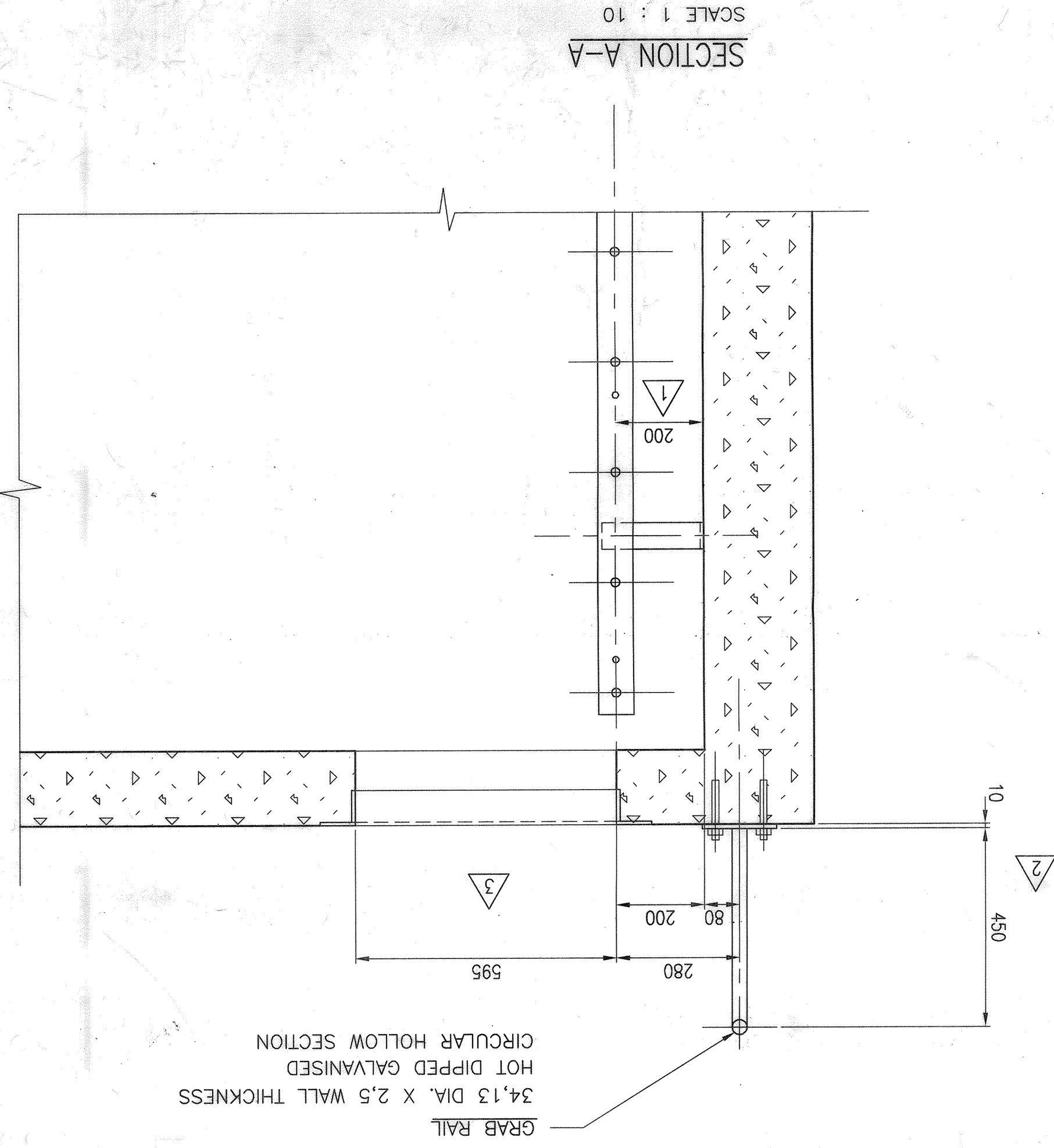
SCALE 1 : 5



SECTION C-C

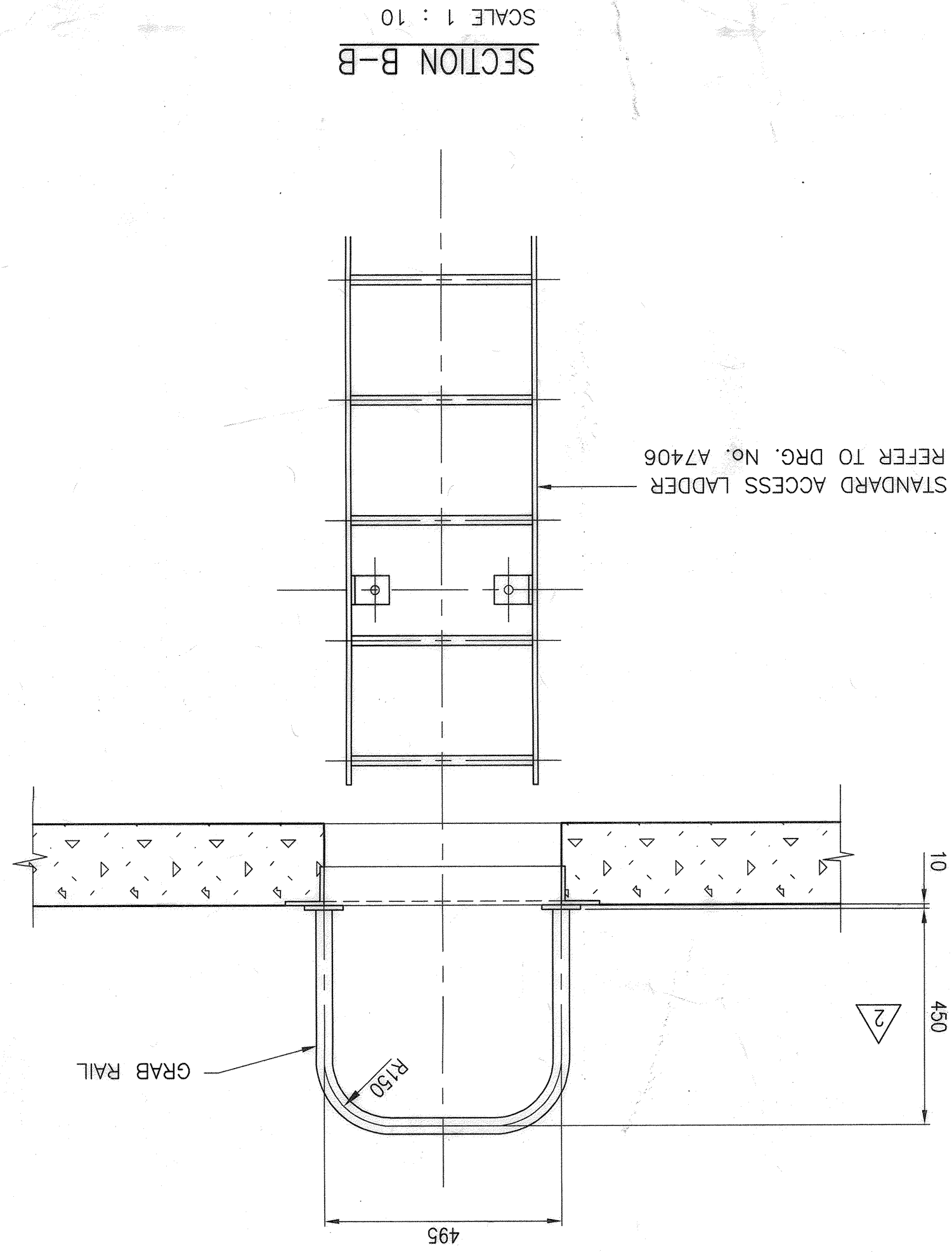


PLAN ON MANHOLE



SECTION A-A

SCALE 1 : 10



SECTION B-B

SCALE		AS SHOWN		WKS		DOC. TYPE		SCALE	
0	0	0	0	0	0	0	0	0	0
W	R	W	R	W	R	W	R	W	R
STATION		STATION		STATION		STATION		STATION	
DRG No		A9858		REVISION		3		3	

STANDARD DETAILS
DETAILS OF GRAB RAIL AT
ACCESS MANHOLES

JOB No	CHECKED	16/11/89	17/11/89	Pr. Eng	DATE
CONTRACT No	SECTION HEAD			APPROVED	NOV.1994
SCHEME				CAPACITY	
DRAWN BY	F.J.V.D.W.				
DATE					97.01.28

RAND WATER

BOX 1127
JOHANNESBURG
2000
TEL: 682-0911
C.M.F. HALL Pr. Eng
GENERAL MANAGER
ENGINEERING

No	DATE	CHECKED	APPROVED	DESCRIPTION
1	9/11/95	MD	4/10/96	DIM. TO LADDER ADDED
2	12/01/96	MD	4/10/96	RAIL DIM. CHANGED
3	14/01/97	MD	4/10/96	M/H OPENING RE-POSSD.