

NOTES :

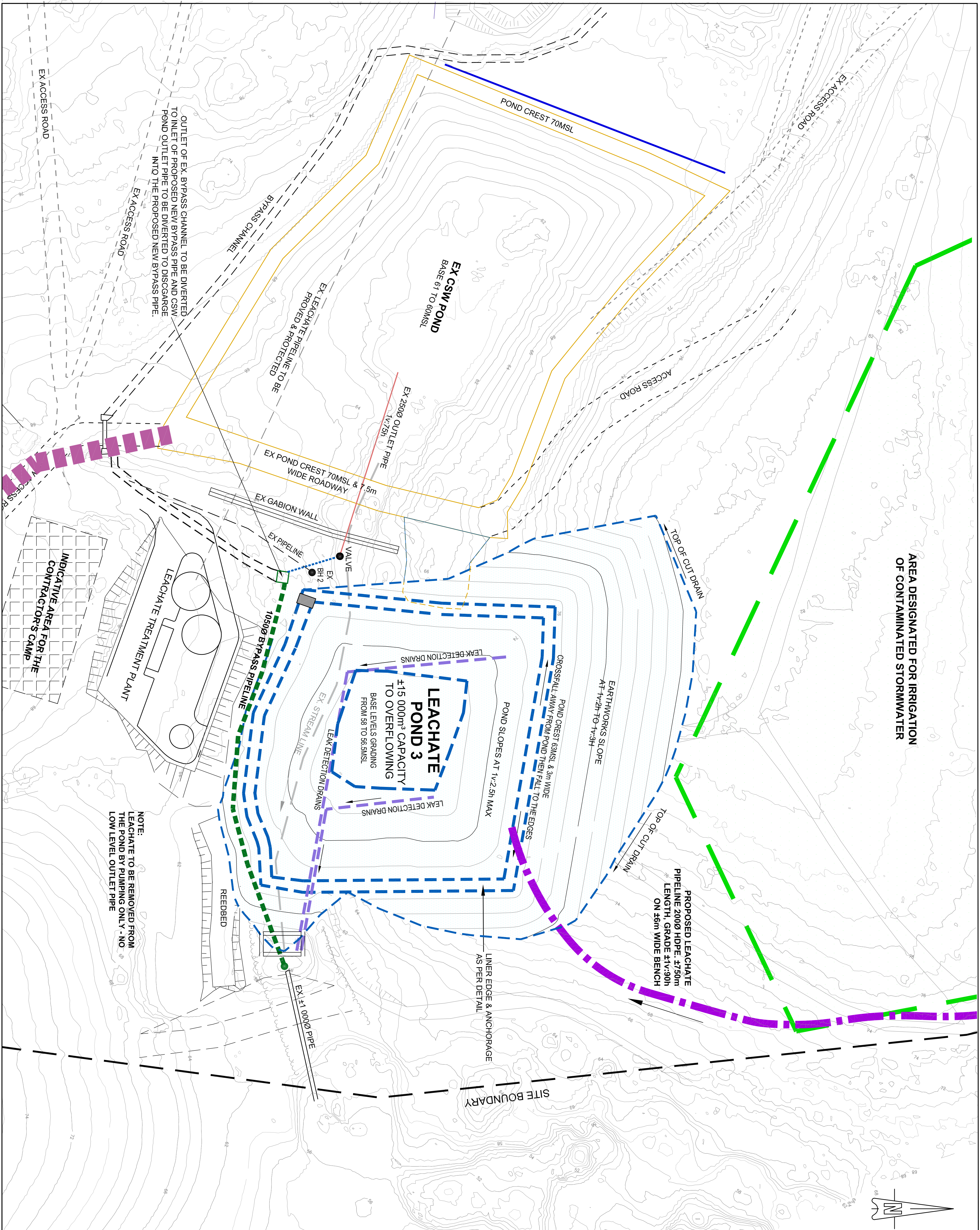
[illegible]

The Contractor shall take adequate Health and Safety precautions when working with and adjacent to waste. The wastes placed in the 30-litred pails are reported to have been predominantly municipal waste (domestic, commercial, industrial and agricultural waste) and are not considered to be hazardous. However, the Contractor should also make provision for the fact that any landfill may contain small quantities of hazardous substances other than those permitted under its site plan. No guarantee can be given that small quantities of other hazardous materials, including hazardous waste, have not been consolidated with other wastes and disposed without knowledge of the site operator.

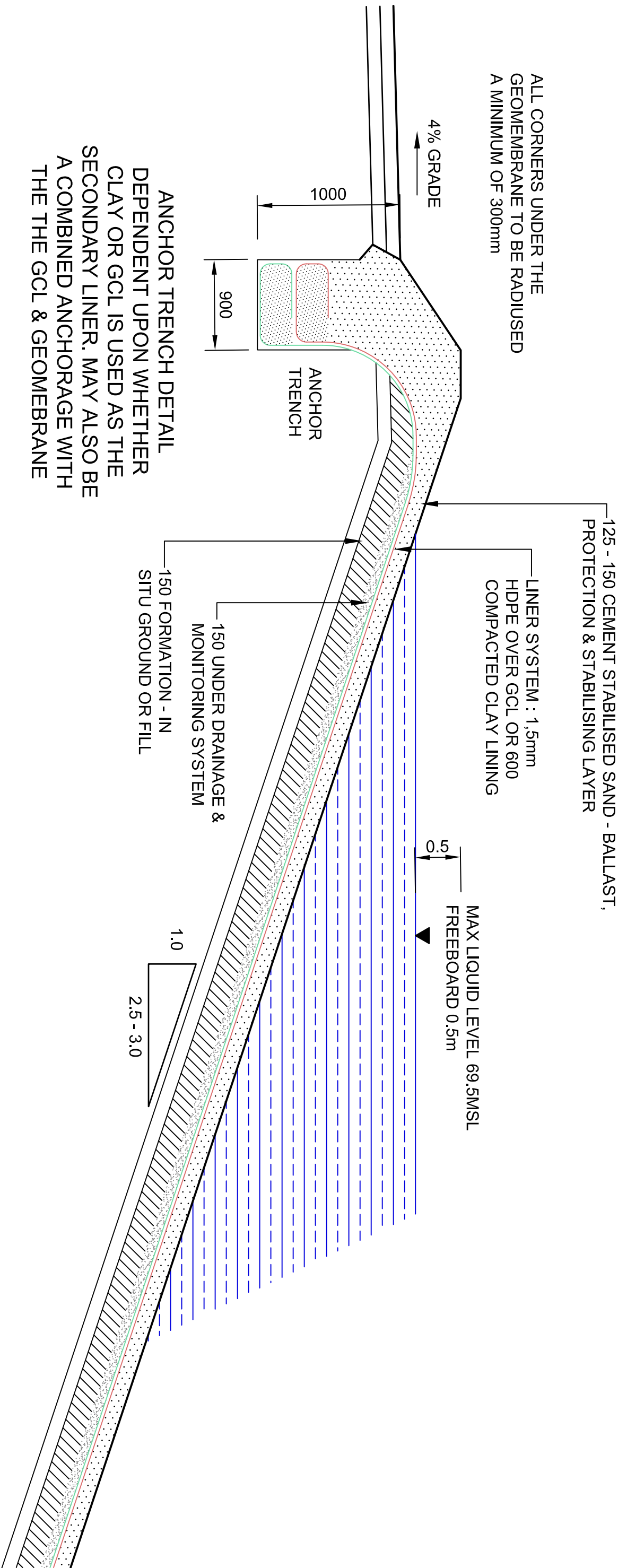
[illegible]

CONTOURS DEPICT WASTE AS AT SEPTEMBER 2022 FOR THE LANDFILL SITE.

<p>SCALE ON REDUCED DRAWINGS</p> <p>TYPING ON ORIGINAL DRAWINGS</p>	
<p>DRAWING SCHEDULE</p> <p>WS 7681 - 01 OVERALL PLANT SHOWINGS DETAIL & ANCHORAGE WORK WS 7682 - 02 PUMP & DETAIL, NEW LEACHATE POND 2 ENHANCEMENTS & DRAINAGE WS 7683 - 03 PUMP & DETAIL, NEW LEACHATE POND 3 WS 7684 - 04 DETAIL & LINING PLAN & DETAILS WS 7685 - 05 NEW LEACHATE POND 3; LINING PLAN & DETAILS WS 7686 - 06 NEW LEACHATE POND 3; DETAIL & PLAN WS 7687 - 07 DETAIL & LEACHATE POND 3; CONSTRUCTION DETAIL BETWEEN WS 7688 - 08 DETAIL & LEACHATE POND 3; CONCRETE DETAIL S WS 7689 - 09 DETAIL & LEACHATE POND 3; PLAN & DETAILS; CHASING</p>	
<p>DESIGN ENGINEER / ARCHITECT / LANDSCAPE ARCHITECT</p> <p>WILSON & PASS Inc 10000 Highway 101, Suite 100 Richmond, BC V6V 1K6 Tel: 604-271-8243 / 1127 Fax: 604-271-8243 Email: info@wilsonandpass.com Website: www.wilsonandpass.com</p>	
<p>DATE OF THIS DRAWING</p> <p>UNLESS PLANT 1 IS REVISOR:</p>	
<p>PROJECT:</p> <p>LOWU LANDFILL: CONSTRUCTION OF CELL 6 AND ANCILLARY WORKS</p>	
<p>DRG. TITLE:</p> <p>NEW LEACHATE POND 3 : LINING PLAN & DETAILS</p>	
<p>DRG. NUMBER:</p> <p>FOR TENDER</p>	
<p>DESIGN:</p> <p>J PASS P/ENG 860/76 SIGN</p> <p>for Wilson & Pass Inc</p>	
<p>DATE:</p>	
<p>DESIGN:</p> <p>J.PASS P/ENG</p>	
<p>GRAPHIC SCALE:</p> <p>1 : 500 / AS SHOWN</p>	
<p>DATE:</p> <p>WS 7688 - 05 AC</p>	

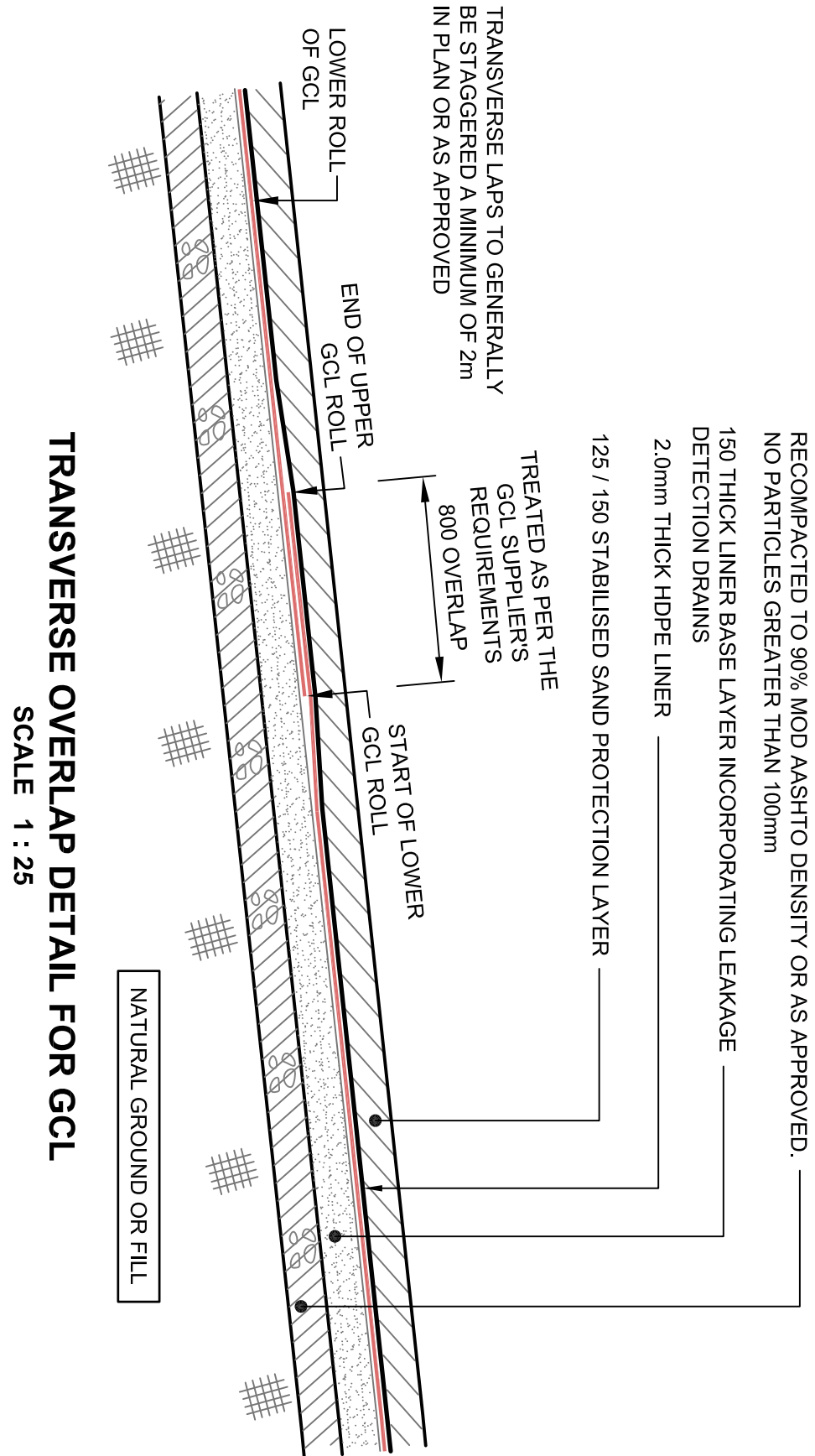


PLAN OF PROPOSED LEACHATE POND 3 LINING
SCALE 1 : 500

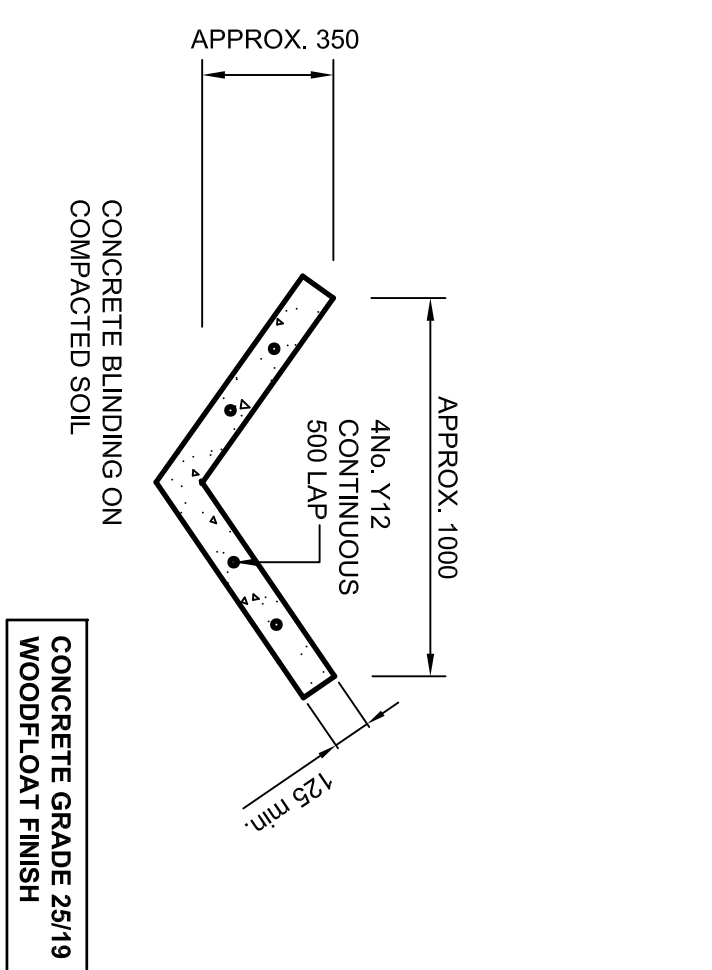


GENERAL ANCHOR TRENCH DETAIL FOR PROPOSED CSW POND
NOT TO SCALE

THICKNESS	LAYER	DESCRIPTION
	BALLAST PROTECTION (OPTIONAL)	NON WOVEN, NEEDLE PUNCHED GEOFABRIC MIN. 180g/m ² (BIDOM A2 OR EQUIV. APPROVED).
125mm to 300mm	LINER PROTECTION / BALLAST LAYER	P1 < 10, GM > 95, ALL PARTICLES PASSING 1 SAND OR SILTY SAND THE 4.75mm SIEVE AND LESS THAN 10% REMAINING ON THE STABILISED WITH 6% CEMENT BY MASS &), 0.075mm SIEVE COMPACTED TO 93% MOD ASHTO TO DENSITY, MINIMUM STRENGTH OF 1,2Mpa _a OR AS APPROVED.
1,5mm	HDPE	GEOMEMBRANE: TEXTURED BOTH SIDES, HDPE TO GRI GM 13 TABLE 2 (B)
600mm	GCL OR COMPACTED CLAY LINER	GCL TO GRI GCL 3 REV #4 TABLE 1(A) PREFERRED OR COMPACTED CLAY LINER (GCL) GENERALLY TO BE CONSTRUCTED IN 4No. 150 mm THICK LAYERS USING CLAY FROM EARTHWORKS OR STOCKPILE COMPACTED TO 95% PROCTOR DENSITY AT A MOISTURE CONTENT ±2% OF THE PROCTOR OPTIMUM MOISTURE CONTENT SATURATED STEADY STATE INFILTRATION RATE INTO THE COMPACTED LAYER SHOULD NOT EXCEED 0.3mly (1 X 10 ⁻⁶ cm/s)
150mm	BASE PREPARATION LAYER / DRAINAGE LAYER / LEAK DETECTION LAYER	UNDER DRAINAGE AND MONITORING SYSTEM IN SELECTED FILL OR SITU SOIL RIPPED AND RECOMPACTED TO 90% MOD ASHTO DENSITY / UNDER DRAINAGE AND MONITORING SYSTEMS INSTALLED AS NEEDED AND INSTRUCTED
VARIABLES	IN SITU MATERIAL OR FILL	IN SITU NATURAL GROUND OR COMPACTED SOIL FILL.



TRANSVERSE OVERLAP DETAIL FOR GCL
SCALE 1 : 25



NOTE : DRAIN MAY BE CAST CONTINUOUSLY WITH SEALED CONSTRUCTION JOINTS AT THE TRANSITION BETWEEN EACH SECTION

CONCRETE VEE DRAIN DETAIL AT PERIPHERAL ROAD EDGE

SCALE 1:2