

LEGEND EXISTING UNDERGROUND SERVICES ARE AS SHOWN BELOW.
NEW INFRASTRUCTURE
EXISTING INFRASTRUCTURE

CONSTRUCTION INFORMATION	
MAIN LAYER	
START DATE	
FINISH DATE	
W/O NUMBER	
LEVEL OF SERVICE	
SUPERVISOR NAME	
CONTACT NUMBER	
DATE SENT TO GIS	
GIS INFORMATION	
DATE RECEIVED	
NAME	

0	JULY 2024	ISSUED FOR CONSTRUCTION
A	JUNE 2024	ISSUED FOR TENDER

Revision Date Description
NOTE: No construction work to commence until land and servitude acquisitions have been completed.
Acquisitions completed:

Date	Engineer	NORTH POINT

NOTE: Only underground services affected by new construction are shown. Care must be taken during excavations for road foundations, trenches etc. to avoid damage to underground services such as sewers, drains, cables, water mains and connections. Wherever possible these must be located before work begins.

Contract No. **WS 7837**

Project No. **X6714**

Planning Unit **WEST HAMMARSDALE - STERKSPRUIT**
Ward No. **103 and 4**

Project Title **HAMMARSDALE HIGH LEVEL RESERVOIR INLET (PHASE 2)**

Drawing Title **OFFTAKE CHAMBER REINFORCEMENT DETAILS (OFF-WESTERN AQUEDUCT)**

Scale: 1:25
Designed: R.NHLUMAYO Date: JULY 2024
Checked: Drawn: S.ZULU

Area Engineer
Manager (Water Design)
Deputy Head (Engineering)

E. MSWELI - Head (W & S)

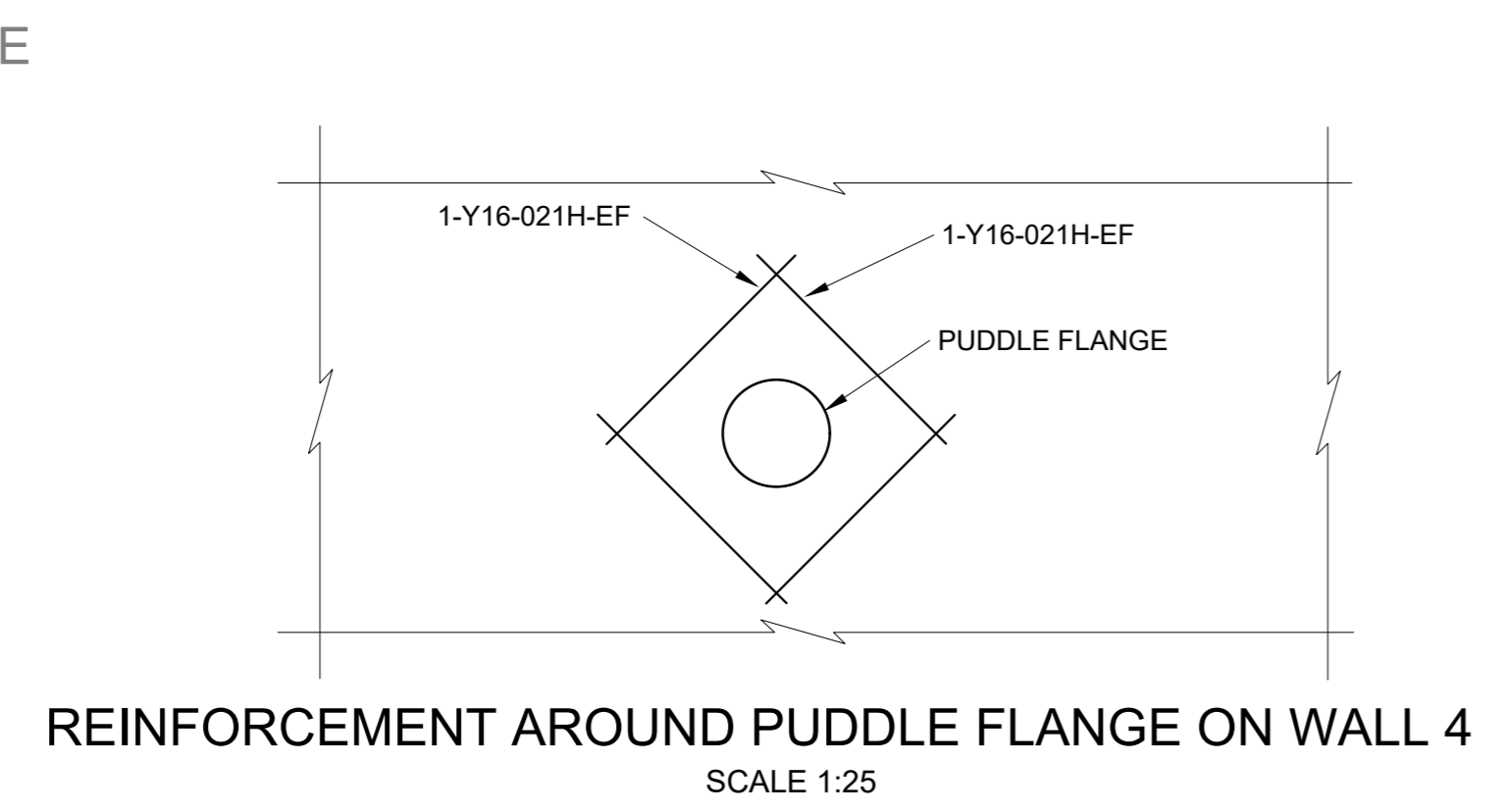
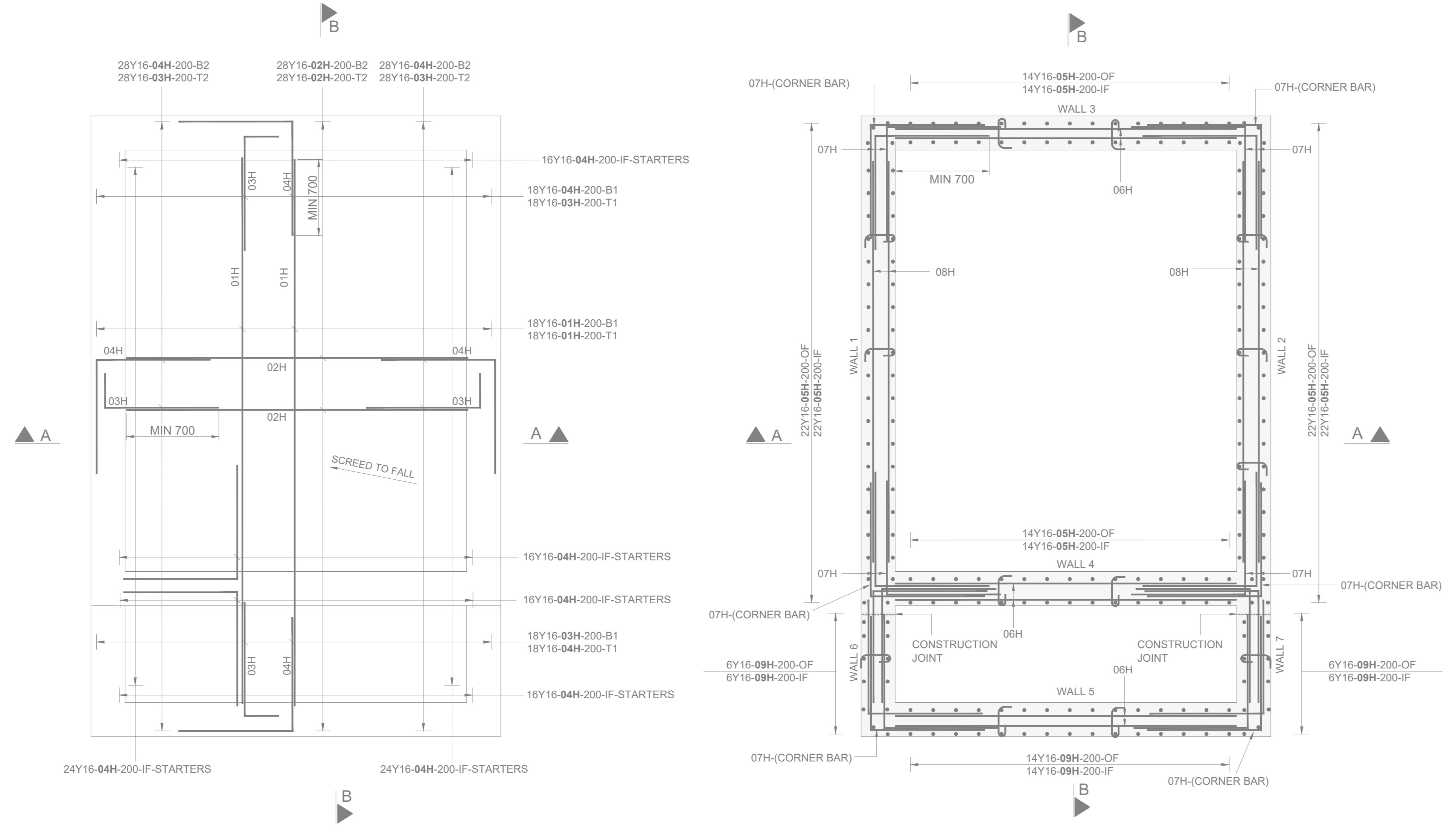
Drawing No. **56724** 14/23 Sheet Rev. **0**

PLEASE NOTE:
• EXISTING WORK DONE PREVIOUSLY ARE INDICATED IN LIGHT COLOUR.
• NEW WORK IS INDICATED IN DARK

BENDING SCHEDULE 'H' - DRG. No. 68212/42														
MEMBER	BAR MARK	TYPE AND SIZE	No. OF MBRS	No. IN EACH	TOTAL No.	LENGTH OF EACH BAR (*)	TOTAL LENGTH (m)	SHAPE CODE	A	B	C	D	E/R	Total mass kg
BASE SLAB	01H	Y16	1	36	36	4800	172.8	20	4800					273.02
	02H	Y16	1	56	56	3000	168	20	3000					265.44
	03H	Y16	1	92	92	1250	115	37	1000	300				181.7
	04H	Y16	1	204	204	2950	601.8	37	1500	1500				950.84
WALL 142	12H	R10	1	8	8	1550	12.4	83	300	270	400			7.65
	05H	Y16	2	44	88	3300	290.4	37	200	3150				458.83
	07H	Y16	2	90	180	1950	351	37	1000	1000				554.58
	08H	Y16	2	36	72	3550	255.6	20	3550					403.85
	10H	Y16	2	8	16	1500	24	20	1500					37.92
	11H	R8	2	9	18	400	7.2	85	115	230	60			2.84
	17H	Y16	2	8	16	800	12.8	20	800					20.22
	05H	Y16	2	28	56	3300	184.8	37	200	3150				291.98
	06H	Y16	2	36	72	3000	216	20	3000					341.28
	11H	R8	2	6	12	400	4.8	85	115	230	60			1.9
WALL 344	21H	Y16	1	8	8	900	7.2	20	900					11.38
	06H	Y16	1	30	30	3000	90	20	300					142.2
WALL 5	09H	Y16	1	28	28	2800	78.4	37	200	2850				123.87
	11H	R8	1	4	4	400	1.6	85	115	230	60			0.63
WALL 67	09H	Y16	2	12	24	2800	67.2	37	200	2850				106.18
	07H	Y16	2	67	134	1950	261.3	37	1000	1000				412.85
ROOF WET CHAMBER	11H	R8	2	2	4	400	1.6	85	115	230	60			0.63
	13H	Y12	1	7	7	1550	10.85	37	100	1500				9.63
ROOF BUTTERFLY CHAMBER	14H	Y12	1	7	7	3050	21.35	37	100	3000				18.96
	18H	Y12	1	8	8	600	2.4	20	600					4.26
	19H	Y12	1	19	19	650	12.35	37	100	600				10.97
	20H	Y12	1	19	19	1000	19	37	100	950				16.87
	13H	Y12	2	12	24	1550	37.2	37	100	1500				33.03
	14H	Y12	2	12	24	3050	73.2	37	100	3000				65
	15H	Y12	2	19	38	1900	72.2	37	100	1850				64.11
	16H	Y12	2	19	38	1250	47.5	37	100	1200				42.18
	17H	Y12	1	4	4	1000	4	20	1000					3.55
	18H	Y12	2	20	40	600	24	20	600					21.31

ALL BENDING DIMENSIONS ARE IN ACCORDANCE WITH SABS 82
* LENGTH SPECIFIED TO NEAREST 50mm
NB: ALL DIMENSIONS IN BRACKETS () ARE RUN-OFF DIMENSIONS

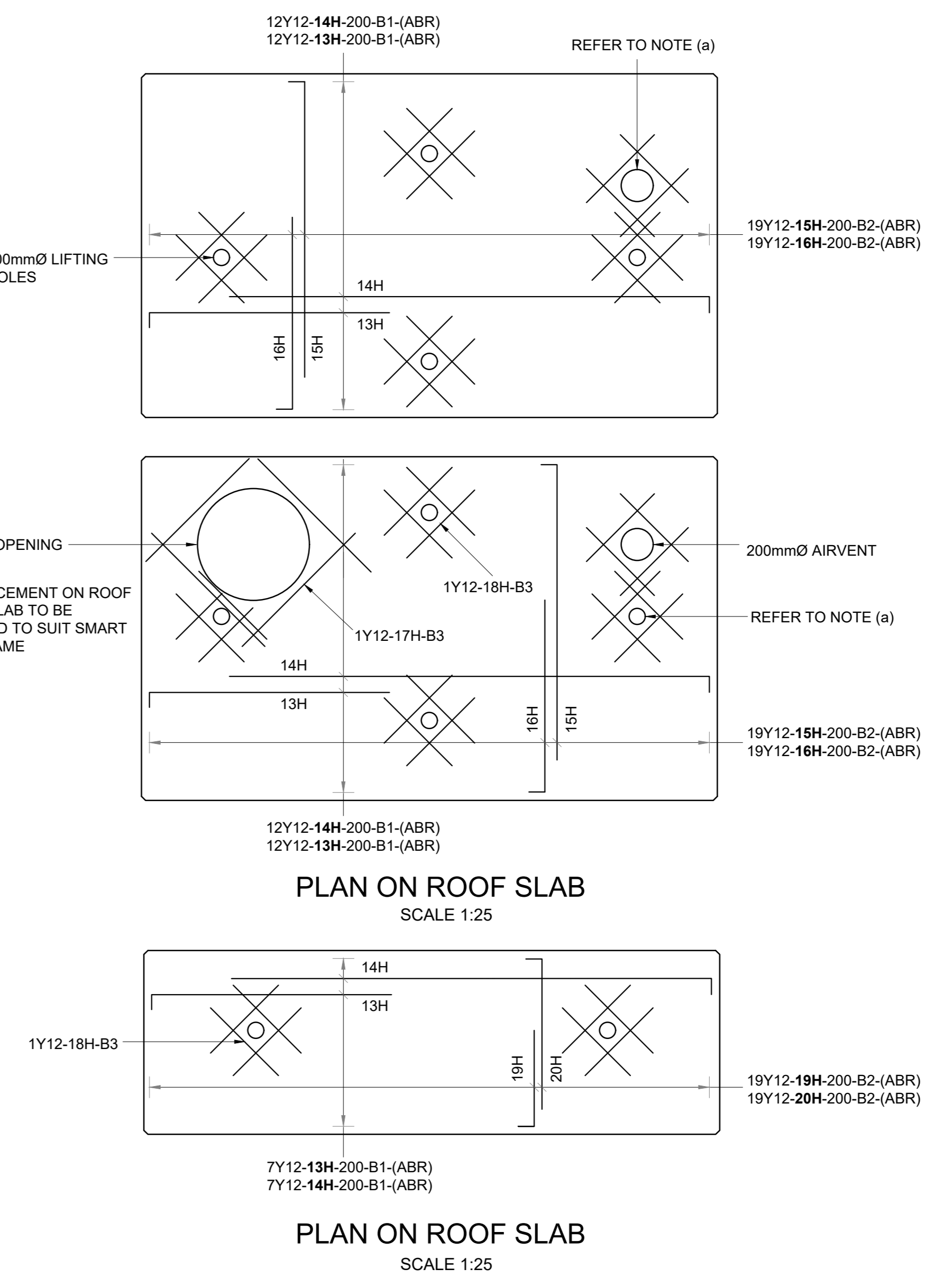
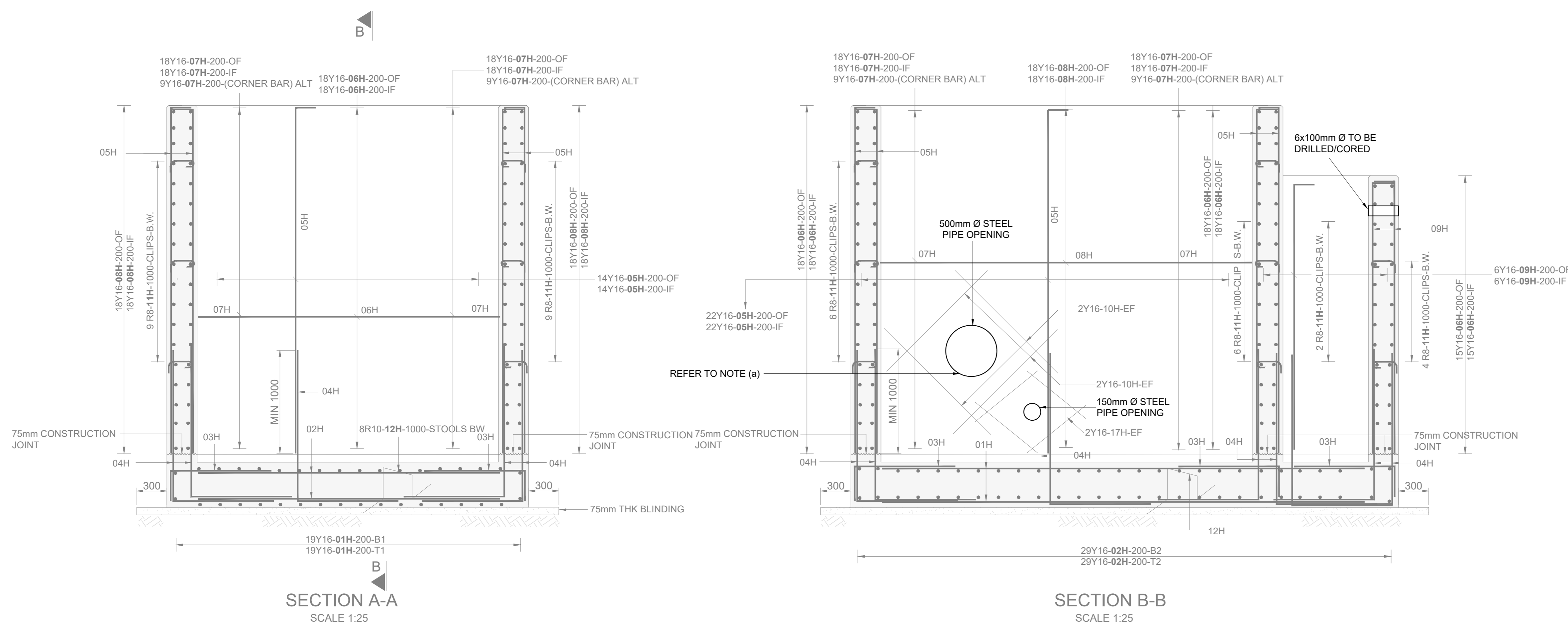
BAR DIAMETER	R8	R10	Y10	Y16	Y20	Y25	Y32	TOTAL MASS(kg)
MASS (kg)	6	7.65	289.87	4576.14				MS 13.65 HTS 4866.01



NOTES
(a) FOR POSITIONS OF ALL DRAINAGE PIPES, STEEL PIPE WORK AND OPENINGS, REFER TO DRAWING 68212/20

ABBREVIATIONS

IF - INSIDE FACE	HC - HIGH CHAIR
BW - BOTH WAYS	STG - STAGGERED
EF - EACH FACE	T - TOP
EW - EACH WAY	T1 - HIGHEST OF THE TOP LAYERS
OF - OUTSIDE FACE	T2 - SECOND HIGHEST OF THE TOP LAYERS
ABR - ALTERNATE BARS REVERSED	T3 - THIRD HIGHEST OF THE TOP LAYERS
ALT - ALTERNATELY	TG - TOGETHER
B - BOTTOM	CHC - CONTINUOUS HIGH CHAIR
NF - NEAR FACE	FF - FAR FACE
B1 - LOWEST OF THE BOTTOM LAYERS	
B2 - SECOND LOWEST OF THE BOTTOM LAYERS	
B3 - THIRD LOWEST OF THE BOTTOM LAYERS	



FOR CONSTRUCTION