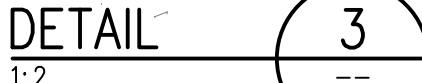
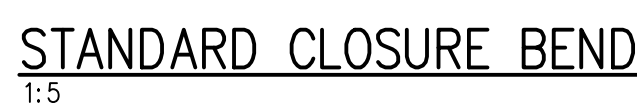




-
- Technical drawing of a vertical handrail assembly. The drawing shows a central vertical post labeled "45mm SMOOTH TUBE" with two horizontal handrails labeled "31.8mm HANDRAIL TUBING". The total height of the assembly is 1000mm, with the handrails positioned 500mm apart. The base is labeled "150x60x10mm BASE PLATE". A note at the bottom states: "2 No. OFF 18mm Holes for 16mm Threaded S.S. Bar with Chemical Compound to Engineers Approval".



ISSUED FOR INFORMATION

THIS DRAWING HAS BEEN CREATED ON A C.A.D. SYSTEM.
ANY AMENDMENT MUST BE EFFECTED ON THE SAME SYSTEM