

**FEMALE ABLUTION BLOCK**  
scale 1:50  
**10 Seats**

Window and Door Schedule - scale 1:50			
	WINDOW 1	WINDOW 2	WINDOW 3
<b>WINDOWS</b>			
Description:	533 x 654mm hot-dipped galvanized steel residential top hung unit. Unit code NE1 with 20 x 5mm hot-dipped galvanized flat bar to open sections	1022 x 654mm hot-dipped galvanized steel residential top hung unit. Unit code NE2 with 20 x 5mm hot-dipped galvanized flat bar to open sections	1511 x 654mm hot-dipped galvanized steel residential top hung unit. Unit code NE4 with 20 x 5mm hot-dipped galvanized flat bar to open sections
Finish:	Clean with galvanized iron cleaner. 1 x galvanized iron primer coat and 2 x coats of approved gloss enamel paint.	Clean with galvanized iron cleaner. 1 x galvanized iron primer coat and 2 x coats of approved gloss enamel paint.	Clean with galvanized iron cleaner. 1 x galvanized iron primer coat and 2 x coats of approved gloss enamel paint.
Glazing:	4mm Opaque Glass with Steel Window Putty	4mm Opaque Glass with Steel Window Putty	4mm Opaque Glass with Steel Window Putty
Ironmongery:	Factory Fitted - Standard Brass Fittings	Factory Fitted - Standard Brass Fittings	Factory Fitted - Standard Brass Fittings
<b>DOORS</b>	<b>DOOR 1</b> 	<b>DOOR 2</b> 	<b>GATE 1</b> 
Description:	760x1680mm high, pre-painted 'golden brown' formed of 1945mm tubular steel framing and middle ledge welded at angles and intersections, covered on one side with 0.6mm galvanized sheeting pressed to shape with edges lapped around and rivetted to frame at 300mm centres, with slot for and including 25mm diameter x 210mm long pivot pipe support welded on, with 150x75x3mm bottom bearing bolted to floor with 3x6mm diameter bolts, 150x80x80mm top bearing bolted to beam with 2x6mm diameter bolts, including top cap bearing bush, washers, bottom bearing bush and finishing smooth on all exposed edges, complete with all fixing brackets, bolts etc.	950x2032mm high DUROWIN or equal approved fluted or braced single panel opening out door and two lever mortice lock with oneshop coat red oxide	Painted mild steel gate consisting of 12mm diameter steel rods placed at 100mm centres as per detail.
Finish:	Dipped 1 coat red oxide primer before despatch	Dipped 1 coat red oxide primer before despatch	1 x coat zinc chromate primer and 2 x approved coats of gloss enamel (exterior quality)
Ironmongery:	Supplied with door.	Supplied with door.	Padlock as per detail.
Frame:	DUROWIN Pressed mild steel frame, 1.2mm thick with single rebate, supplied with hinges and door.	DUROWIN Pressed mild steel frame, 1.2mm thick with single rebate, supplied with hinges and door.	25 x 25 x 2mm mild steel square tube welded to form frame.
Finish:	Inside of frame to receive bitumen paint finish before fixed in position. 1 x red oxide primer and 2 x coats of approved velvet enamel	Inside of frame to receive bitumen paint finish before fixed in position. 1 x red oxide primer and 2 x coats of approved velvet enamel	1 x coat zinc chromate primer and 2 x coats of approved enamel (exterior quality)

**NOTE:**  
construction of the pit must be as per Engineer's drawing

#### GENERAL NOTES:

1: FIGURED DIMENSIONS TO TAKE PREFERENCE OVER SCALED DIMENSIONS. ANY ERRORS, OMISSIONS OR DISCREPANCIES PERTAINING TO DIMENSIONS, LEVELS OR POSITIONS AS SHOWN ON THE DRAWINGS ARE TO BE REPORTED TO THE ARCHITECT IMMEDIATELY.

2: THESE ARCHITECTURAL DRAWINGS ARE TO BE READ IN CONJUNCTION WITH ENGINEERS AND OTHER CONSULTANTS DRAWINGS WHERE APPLICABLE. ANY DISCREPANCIES IDENTIFIED BETWEEN THE ARCHITECTS DRAWINGS AND DOCUMENTATION AND ANY OTHER SHOP DRAWINGS OR DOCUMENTATION FROM ANY OTHER SOURCE MUST BE REPORTED TO THE ARCHITECT IMMEDIATELY.

3: ALL WORK TO COMPLY WITH THE NATIONAL BUILDING REGULATIONS.

4: ALL WORK TO BE PERFORMED IN ACCORDANCE WITH ACCEPTED LOCAL BUILDING PRACTICE.

5: THESE DRAWINGS REMAIN THE COPYRIGHT OF THE ARCHITECT AND MAY NOT BE USED OR COPIED WITHOUT HIS PRIOR WRITTEN APPROVAL.

DRAINAGE NOTES:  
ALL DRAINAGE TO COMPLY WITH SABS 0400, SECTION P, PART 3.

05		
04		
03		
02		
01		
DATE:	REVISIONS:	

CLIENT:

PROFESSIONAL SERVICE PROVIDER:

**athi-AYANDA**  
CONSULTING senior architectural  
CK/CC: 2011/003827/23 technologists

**EAST LONDON** Pr Reg. PSAT20667  
9 Clover Ridge Complex  
Elfin Glen Road  
Nahoon Valley Park  
5241 athiayandaconsulting@gmail.com  
Fikile Ndzingani 072 409 8254

PROJECT:  
**VUKAYIBAMBE SSS**  
Provision of Emergency  
Temporal Classrooms &  
Ablutions  
Ngcobo

DRAWING TITLE:

**10 SEATS**

DRAWING DESCRIPTION:

**FEMALE ABLUTION BLOCK**  
Floor Plan, Section, Elevations  
& Details

PAPER SIZE:	MONTH DRAWN:
A1	APRIL 2017
DRAWN BY:	ISSUE DATE:
FN	04 APR 2017
SCALE:	REVISION NUMBER:
As shown	00

#### ROOF

Factory painted 0.558 IBR profile roof sheeting @ 17.5°, on 50x76mm S.A. pine purlins fixed to rafters @ 750 mm c/c spacings, on prefabricated timber trusses @ max. of 1200mm c/c spacing on 38x114 S.A. pine timber wallplates in long lengths, half lapped & spiked at joints with gangnail plates, bedded on cement mortar & leveled before tying down to walls with 1.6 mm thick galvanized hoop iron, 32mm wide into min. of 5 courses into brickwork & tied around tie-beam, rafter or additional purlin as convenient, and fixed with four galvanized nails, 40 mm long. **NOTE: Roof construction to be done by specialist as per truss designer's specification & approval. On-site the roof trusses must be placed on evenly laid pallets, covered & protected against weather. Hurricane Clips fixed with permix nails or bolts through pre-drilled holes at covered verandah/ tank stand area must be provided for.**

#### CARBOLINEUM WOOD PRESERVER

All exposed structural timber is to receive two coats carbolineum. Timber must be dry and carbolineum applied to the entire roof trusses before the application of roof sheets.

#### RIDGE

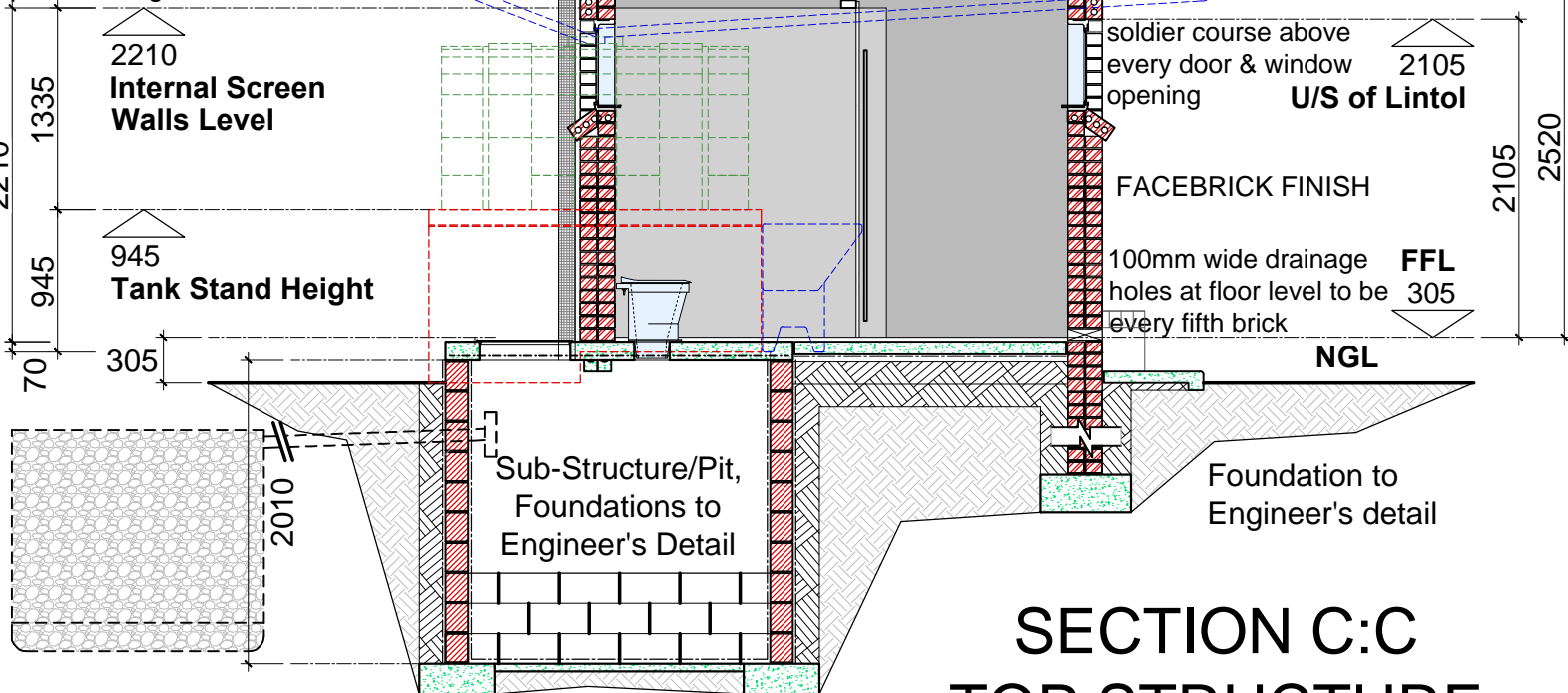
450mm girth with roll top and bent down edges, galvanized metal ridge capping with 225mm lapping. final colour to match roof sheet covering.

#### GUTTER / DOWNPipe

150 x 100 x 0.5mm thick pre-coated zincalume seamless gutter, including matching rivet-fixed mitres and end caps internally sealed using Silicon Mastic, hung by nail fixed internal aluminium hangers at 500mm centres with 100 x 75 x 0.8mm thick rectangular fluted downpipes to 2500L horizontal RWHT.

#### VENT PIPE

110mm white uPVC pipes painted black fixed firmly to outside wall with adequate brackets @ max. of 500mm. Vent Pipes at to be 500mm from highest point of roof and fitted with ventilated cap & fly proof netting.



**SECTION C:C TOP STRUCTURE**  
scale 1:50

sanitary schedule	
Pit WC:	As per details. VIP 450 Pit Pedestal (unit code: 237 AP), or similar approved.
DA Person' WHB	As per detail or similar approved.
Wash Trough	1070mm wide precast concrete wash trough.

#### FLOOR CONSTRUCTION

Granolithic floor finish on Powerfloated 85mm thick concrete surface bed on 250 micron Gunplas USB green waterproof membrane on 50mm sand blinding on well compacted clay free earth fill, and FINAL details to Engineer's specifications.

#### FASCIA

medium density plain ungrooved fascia boards, size 225 x 12mm thick, fixed to 114 x 38mm support battennfixed between steel structure. Screws with 12 x 40mm countersunk brass screws at 900mm centres to support battens with aluminium H-profile fascia joiner between boards and aluminium H-profile fascia corner joiners at board ends.

#### BARGE BOARD

85 x 275 x 6mm Barge board drilled and brass screwed to purlin ends including galvanized steel H-profile jointing strips, screws, holes etc.

#### INTERNAL CILLS

150 x 15mm thick fibrecement cill fixed with standard galvanized lugs screwed to underside of cill and cast into mortar bed in compliance with manufactures specification. Cills to have top arris and coners sanded down to produce an even chamfer.

#### EXTERNAL CILLS

facebrick on edge with 375 micron brickgrip dpc underneath the cill.

#### WALLS

Damp proof coursing: to be gunplas black brickgrip or equal and approved 375 micron dpc, lapped minimum 150mm at all joints, and similarly lapped over green under-floor damp proof membrane.

DPC'S at door reveals (in cavity construction): minimum 150mm wide, to be tucked into side of door and window frames and sandwiched in mortar between outer, facebrick skin and cavity closer and to overlap lintol and cill DPC'S.

DPC'S at lintols: to be inserted above all windows, stepped up one course and built into inner skin coursing with mortar fill under all as detailed.

External / load bearing walls: to have galvanized brickforce reinforcing at 4 course intervals built into bed joints. Door heads to be reinforced to 3 course above openings, and at 3 course intervals thereafter. N.B. Brickforce reinforcing strips to be built in isolation into the appropriate brick skin and must not be used to tie the inner and outer skins of the cavity together.

External brickwork generally: 85mm brick guage with maximum 10mm deep tooled, half-round horizontal and vertical joints all laid in compo mortar comprising 1 part cement: 1/4 part cape lime company plastic, pressure hydrated lime: 6 parts sand with open perpends forming weepholes as specified.

Internal brickwork generally: to be laid in compo mortar comprising 1 part cement: 1 part cape lime company plastic, pressure hydrated lime: 6 parts sand.

#### GRANO

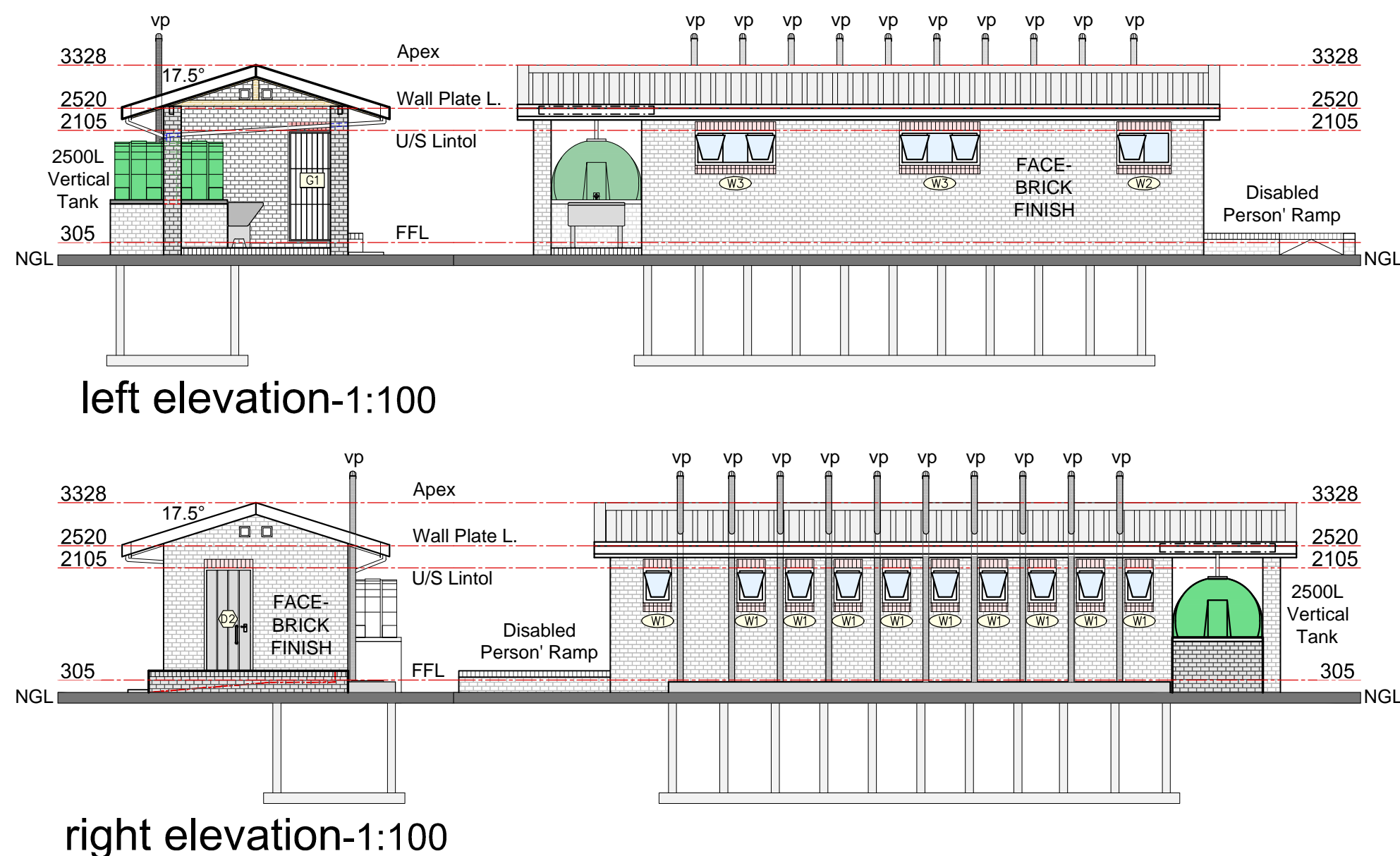
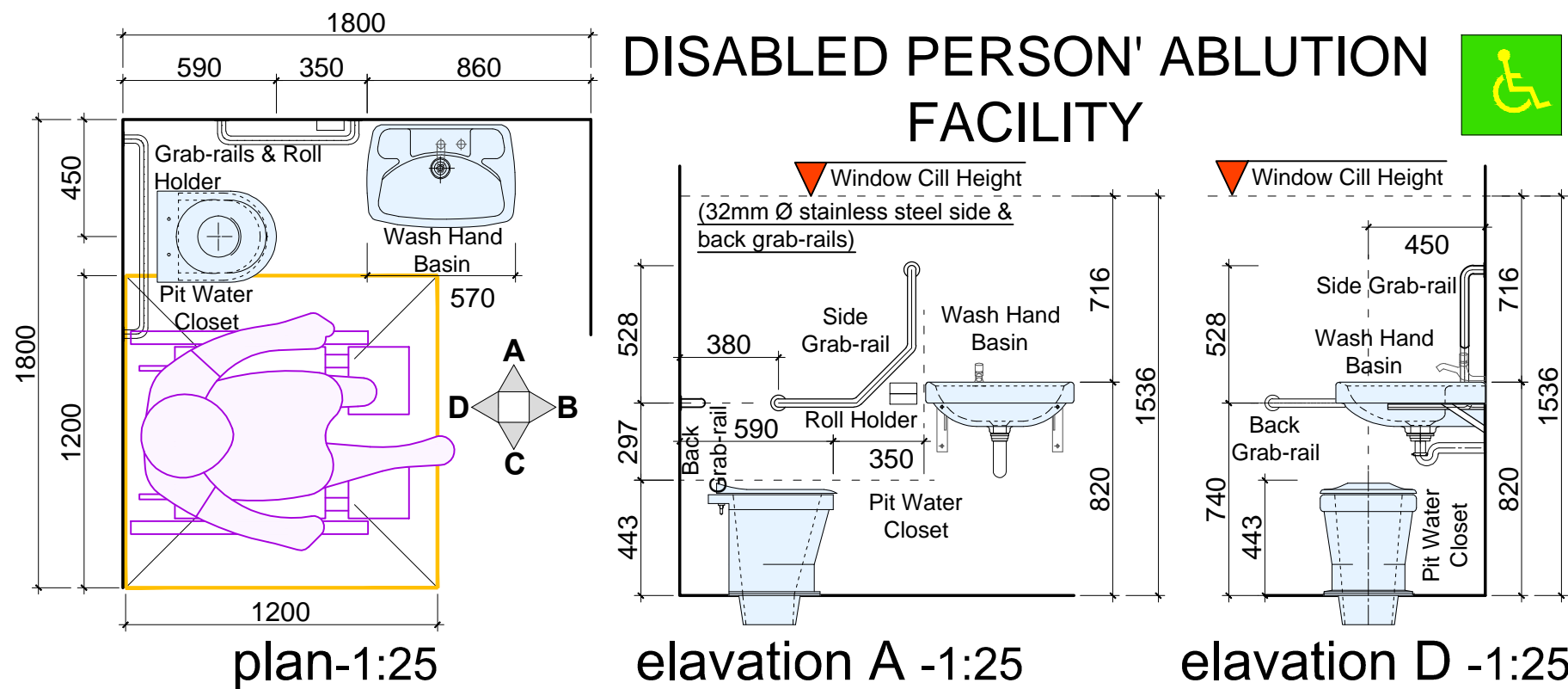
40mm STEEL Trowelled, untinted granolithic screed comprising 4 parts granite, 1 part sand and 2 parts cement laid on concrete surface beds / r.c. Brashed Finish.

#### SKIRTING

Form 70mm high un-tinted granolithic skirting by turning the granolithic floor finish up against the walls and other vertical surfaces, hollow rounding the granolithic at junction with floors and finishing the top edge perfectly straight.

#### GENERAL

Black rubber door stop, 32mm, plugged and screwed to wall.



**A1**