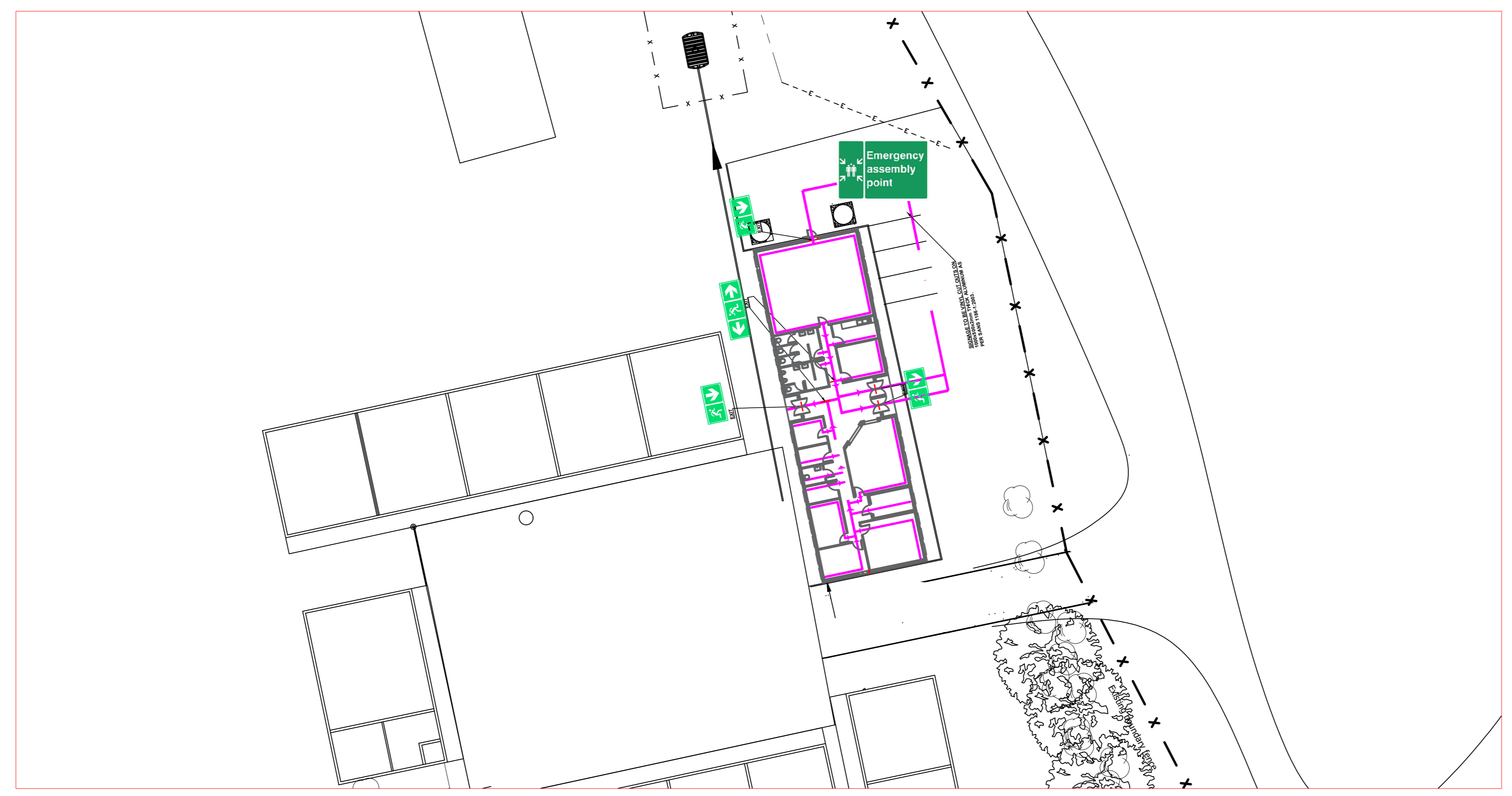


EMERGENCY EVACUATION LAYOUT
SCALE 1:50



EMERGENCY EVACUATION ASSEMBLY POINT
SCALE 1:300

SIGNAGE SCHEDULE			FIRE NOTE
ITEM	DESCRIPTION	QTY	GENERAL FIRE NOTES
	FIRE EXTINGUISHER	6	1. ALL FIRE EQUIPMENT TO BE IN ACCORDANCE WITH SANS 10400 2011 3rd EDITION 2. SYMBOLIC SAFETY SIGNS TO BE IN ACCORDANCE WITH SANS 1186 3. ALL FIRE FIGHTING EQUIPMENT TO BE IN ACCORDANCE WITH SANS 1128 4. MANUAL ALARM SYSTEM WITH ALARM MONITORING PANEL LOCATED IN RECEPTION AREA 5. ALL DOORS FITTED WITH SELF CLOSING DEVICE IN ACCORDANCE WITH SANS 1253 6. PAINTING - SEE WORKS INFORMATION 7. ALL FIRE DETECTION TO BE IN ACCORDANCE WITH SANS 10139 8. FIRE EQUIPMENT SIGNAGE REQUIRED IN TERMS OF TT29/32 9. CLASS 2 COPPER 10. PORTABLE FIRE EXTINGUISHERS TO COMPLY WITH TT37 11. ALL WATER SUPPLY PIPES TO HOSE REELS AND HYDRANTS TO BE CONNECTED TO EXISTING FIRE WATER SUPPLY PIPE 12. ALL SIGNAGE POSITIONS TO BE CONFIRMED ON SITE USING THE FIRE PLAN DRAWING 13. ALL SIGNAGE TO BE VINYL CUT OUTS ON 150x150x1mm THICK PHOTOLUMINESCENT AS PER SANS 1186-1:2003. 15. ALL SAFETY SIGNAGE TO BE PHOTOLUMINESCENT.
	FIRE EXTINGUISHER	1	
	FIRE EXTINGUISHER	1	
	EXIT	5	
	EXIT	2	

FIRE NOTE			
GENERAL FIRE NOTES			
1.	ALL FIRE EQUIPMENT TO BE IN ACCORDANCE WITH SANS 10400 2011 3rd EDITION		
2.	SYMBOLIC SAFETY SIGNS TO BE IN ACCORDANCE WITH SANS 1186		
3.	ALL SIGNAGE POSITIONS TO BE CONFIRMED ON SITE USING THE FIRE PLAN DRAWING		
4.	ALL SIGNAGE TO BE VINYL CUT OUTS ON 150x150x1mm THICK ALUMINUM AS PER SANS 1186-1:2003.		
5.	ALL SIGNAGE SHALL BE HANGED FROM THE ROOF USING STAINLESS STEEL ROPE		
6.	ILLUMINATION SHALL BE PROVIDED TO ALL THE EMERGENCY EXIT SIGNS		

NOTES	
1.	DO NOT SCALE DRAWING - ONLY DIMENSIONS SHOWN TO BE USED.
2.	THE CONTRACTOR SHALL VERIFY ALL CONDITIONS, DIMENSIONS AND LEVELS ON THE SITE AND NOTIFY THE NEC SUPERVISOR OF ANY VARIATIONS BEFORE CONSTRUCTION.

CONTRACTOR / CONSULTANT				TRANSNET PORT TERMINALS			
TITLE	NAME	SIGN	DATE	TITLE	NAME	SIGN	DATE
				DRAWN	LN		27 10 23
				CHECKED	DM		27 10 23
				DESIGNED	LN		27 10 23
				CHECKED	DM		27 10 23

OPERATING DIVISIONS			
TITLE	NAME	SIGN	DATE

Transnet Port Terminals

JOZINI

MANGWAZANA SECONDARY SCHOOL
EMERGENCY EVACUATION LAYOUT

PROJECT NUMBER	00	FBS	DIS	TYPE	DRAWING NO.	SHEET	REV	ID
	0-000	M-LA	0004	01	1	1	TD	

REVISIONS			
NO.	DESCRIPTION	BY	CHKD APPD DATE
1	ISSUED FOR TENDER	LN DM LN	27-10-2023

This document including all design and information herein is Confidential Intellectual Property of Transnet. Copyright and all other rights are reserved by Transnet. This document may only be used for its intended purpose.