

1

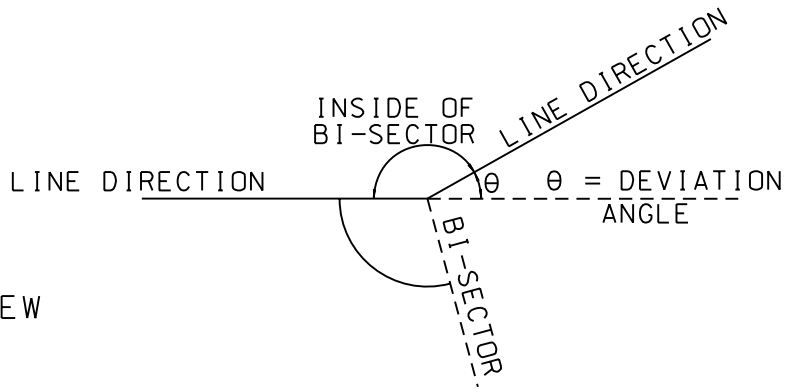
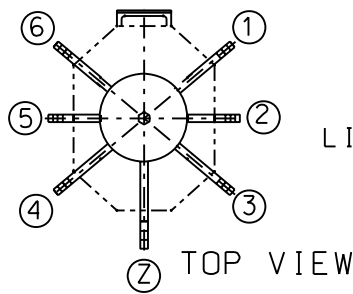
2

3

4

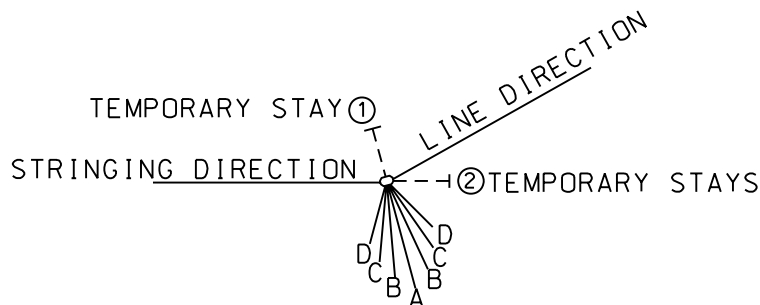
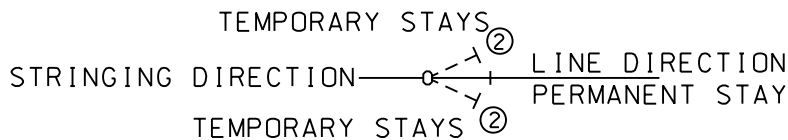
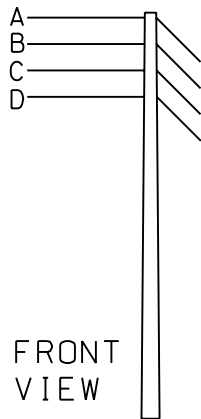
A

A



B

B



C

C

ANGLE 0°

- * STAYS IN-LINE FROM LUGS ② AND ⑤
BELOW BOTTOM PHASE ONLY
ANGLES 0° - 40°
- * PHASE TAKE-OFF FROM LUGS ② AND ⑤
ANGLES 1° - 40°
- * STAYS IN BI-SECTOR FROM Z LUGS
ANGLES 41° - 90°
- * PHASE TAKE-OFF FROM LUGS ① AND ⑥
- * STAYS IN BI-SECTOR FROM Z LUGS

D

D

TEMPORARY STAYS:

1. A TEMPORARY STAY ON THE INSIDE OF BI-SECTOR MUST BE USED TO PRE-TENSION THE BI-SECTOR STAYS THIS WILL ENSURE A STRAIGHT AND PLUMB STRUCTURE
2. TEMPORARY STRINGING STAYS MUST BE INSTALLED OPPOSITE THE STRINGING DIRECTION.

E

E

4	RETIC. REMOVED FROM TITLE BLOCK	P.A.T.	S. MASHABA	02.03.'09		
3	DRAWING SHEET UPDATED	SLR	RAB	AB	MARCH'04	
REV	REVISION DESCRIPTION	BY	CHKD	AUTH	DATE	PROJECT NO.

F

F

	DISTRIBUTION TECHNOLOGY RETICULATION/SUB-TRANSMISSION LINES ASSEMBLY AND INFORMATION DRAWINGS STEEL STRAIN STR - STAY LOCATION CHART			
	AUTH: A BEKKER			
	DATE: JAN 2004			
	CHKD: RAB			
	DATE: JAN 2004	SET	SHEET	REVISION
	DRAWN: F WAHL	1	1	4
DATE: NOV 1996	D-DT-7346			

1

2

3

4 A4L