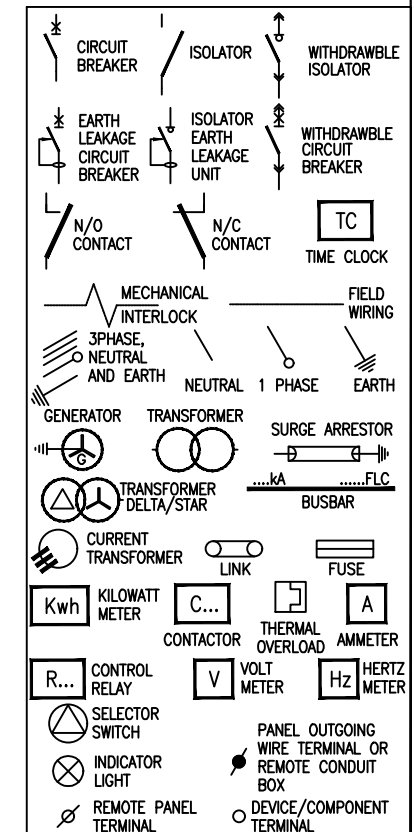



- 1) DROPPERS/TAILS TO BE RATED FOR FULL IP  
LET THROUGH.
- 2) HARNESSSED WIRING TO BE DERATED.
- 3) TUFFNOL BRACES ARE NOT TO BE USED  
ABOVE 10KA.
- 4) COPPER BUSBARS TO BE CONTINUOUS  
RATED.
- 5) SUFFICIENT SPACE REQUIRED FOR SAFE  
ACCESS FOR REWIRING.
- 6) EARTH AND NEUTRAL BARS TO BE EASILY  
ACCESSIBLE.
- 7) ALL CIRCUIT BREAKERS TO BE FITTED WITH  
TERMINAL SHIELD ON LIVE AND LOAD SIDES.
- 8) ENCLOSURE TO BE IP54.
- 9) PHASING RWB, TOP TO BOTTOM, LEFT TO  
RIGHT, BACK TO FRONT.
- 10) INTERNAL TEMP TO BE LIMITED TO 5° ABOVE  
AMBIANT, MAX 40°C.
- 11) ALL CIRCUITS TO BE LABELED.
- 12) 25% SPARE SPACE. SPARE SPACES ARE TO  
BE FITTED WITH COPPER BUSBAR TAILS  
CONNECTED TO DROPPER BUSBARS TO  
ALLOW INSTALLATION OF CIRCUIT  
BREAKERS WITH A MINIMAL SHUTDOWN  
PERIOD.
- 13) DB TO BE FITTED WITH A4 LEGEND CARD  
HOLDER WITH STANDARD BUYA A4 LEGEND  
CARD.
- 14) EACH CIRCUIT TO BE LABELED WITH  
DETAILED DESCRIPTION OF CONNECTED  
DEVICE.
- 15) EXTERNAL EARTH STUD MOUNTED  
ADJACENT CABLE ENTRY.

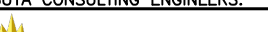
INCOMING CABLE	-BOTTOM
OUTGOING CIRCUITS	-TOP/BOTTOM
COLOR	-ORANGE
	-RED (ESSENTIAL
MOUNTING	-SURFACE
ACCESS	-FRONT
PROTECTIVE DEVICES	-SCHNEIDER
ACB's (1250A-4000A)	-MASTERPACT NW
MCCB's(800A - 1000A)	-COMPACT NS
MCCB's(60A-630A)	-EASYPACT CSV
MCB's	-MULTI 9, TYPE 2
CONDUCTORS	-AC3 HEAVY DUTY



35mm<sup>2</sup> 4C PVC SWA  
PVC ECC Cu CABLE

 Approved in Principle  
Justin McKelvie-King  
Pr Eng : 20120548

NOT WITHSTANDING ANYTHING TO THE CONTRARY, ALL RIGHTS RESERVED. NO PART OF THIS DRAWING MAY BE REPRODUCED IN ANY MATERIAL FORM (INCLUDING PHOTOCOPYING OR STORING IN ANY MEDIUM OR BY ELECTRONIC MEANS WHETHER OR NOT TRANSIENTLY OR INCIDENTALLY TO SOME OTHER USE OF THIS DRAWING) AND ALSO, THIS DRAWING MAY NOT BE USED FOR ANY PURPOSE OR REASON OTHER THAN FOR WHICH IT WAS ORIGINALLY ISSUED, WITHOUT THE WRITTEN PERMISSION OF IBUYA CONSULTING ENGINEERS.

					ENGINEER	DRAWN	DATE:	SCALE: n.t.s	CHKD.	NOT BE USED FOR ANY PURPOSE OR REASON OTHER THAN FOR WHICH IT WAS ORIGINALLY ISSUED, WITHOUT THE WRITTEN PERMISSION OF IDOTA CONSULTING ENGINEERS.	TITLE  Samora Machel Police Station Electrical Installation		
					MK	CW		PAPER SIZE: A3	MK				
					PROJECT No.	DRAWING No.	SHEET:	REV.	DRAWING TITLE:				
0	Original Issue		CW	13/09/24	MK		413		0		Inverter Output DB Single Line Diagram		
REV	DESCRIPTION	BY	DATE	CHKD.	File Name : 32308_412 Lyr:								

