

- 1. Block, Lower Level
- 2. Tube, Trunnion
- 3. Stub, Pipe, Lower Level
- 4. Stub, Pipe, Upper Level
- 5. Flange, Trunnion Tube
- 6. Trunnion

COMPLETE MILL TRUNNION AND INTERNALS DISASSEMBLY AND REASSEMBLY PROCEDURE	REFERENCE	REV.	PAGE
	PRN HF 004	1	53

HFC069

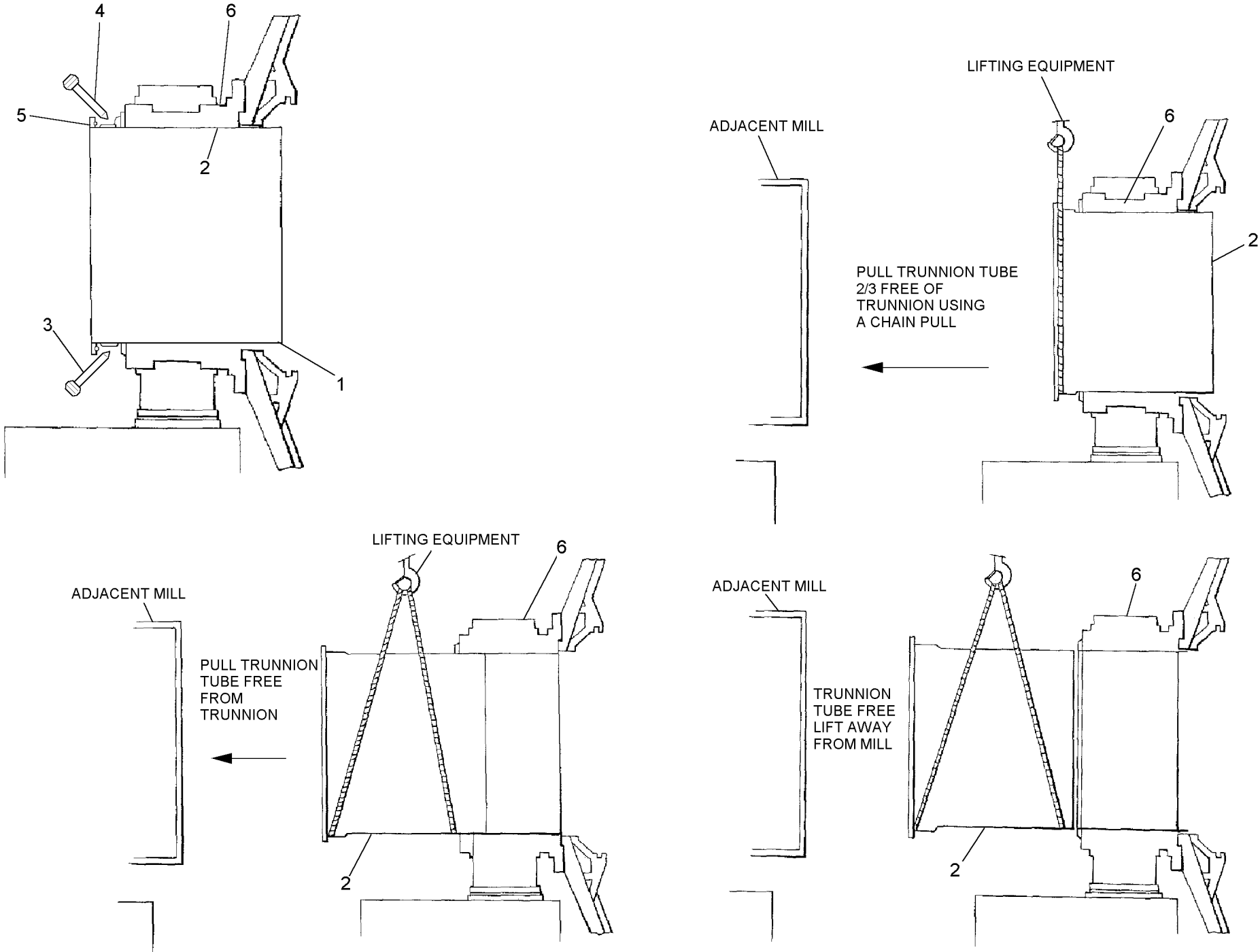
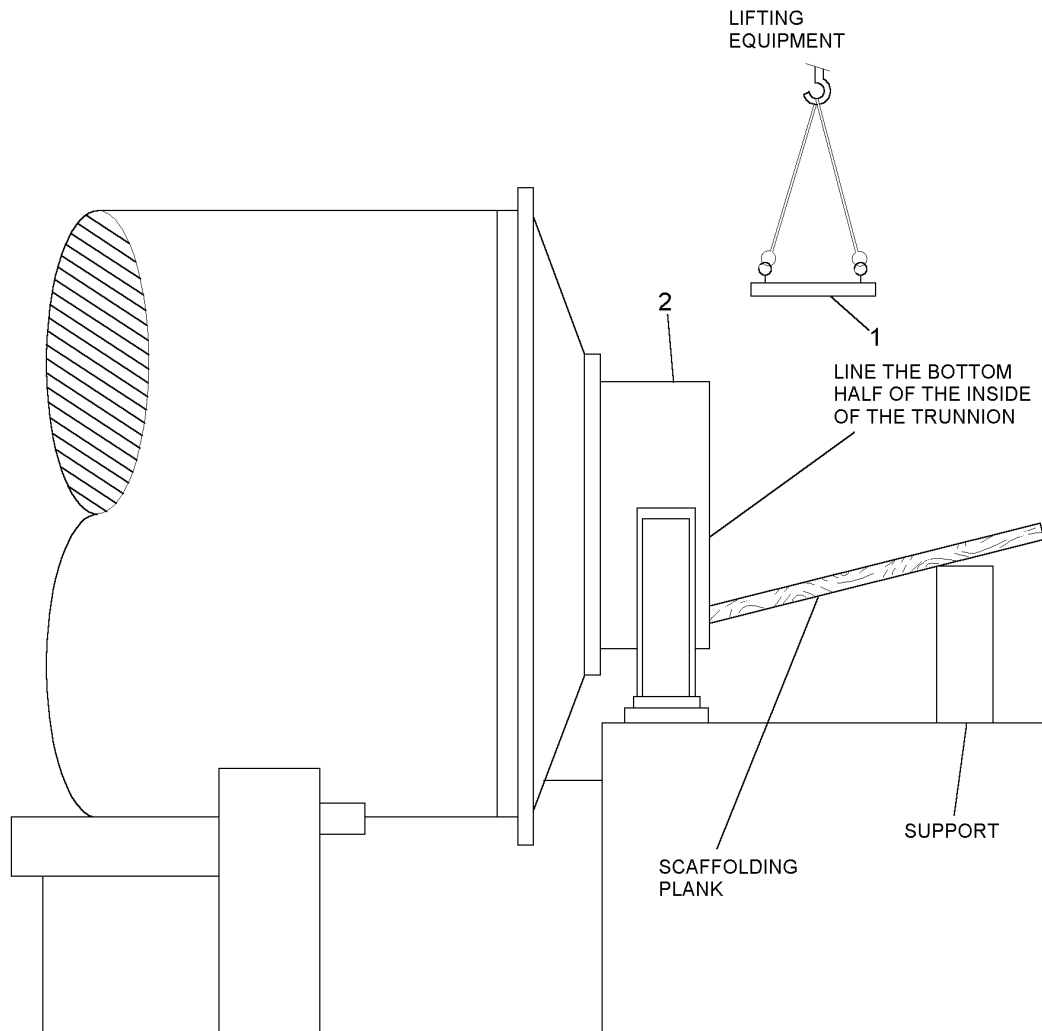


Figure 11

HFC156A



1. Liner, Wear
2. Trunnion

**Figure 12**

- 1. Nut, Hex, Self-locking, M27
- 2. Bolt, Liner
- 3. Washer, Special
- 4. Liner
- 5. Body, Mill
- 6. Tile, Cork

COMPLETE MILL TRUNNION AND INTERNALS DISASSEMBLY AND REASSEMBLY PROCEDURE	REFERENCE	REV.	PAGE
	PRN HF 004	1	55

HF007

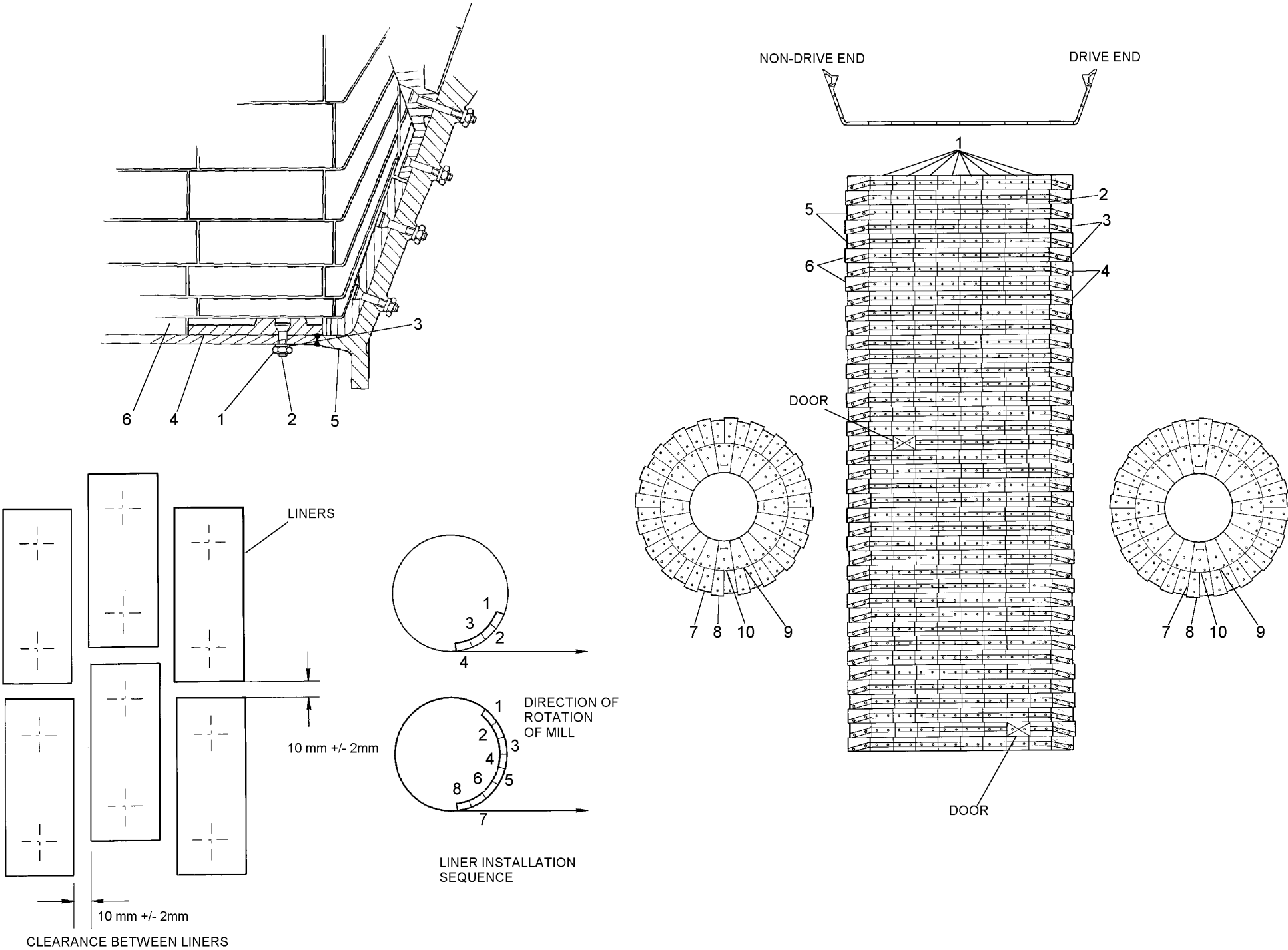
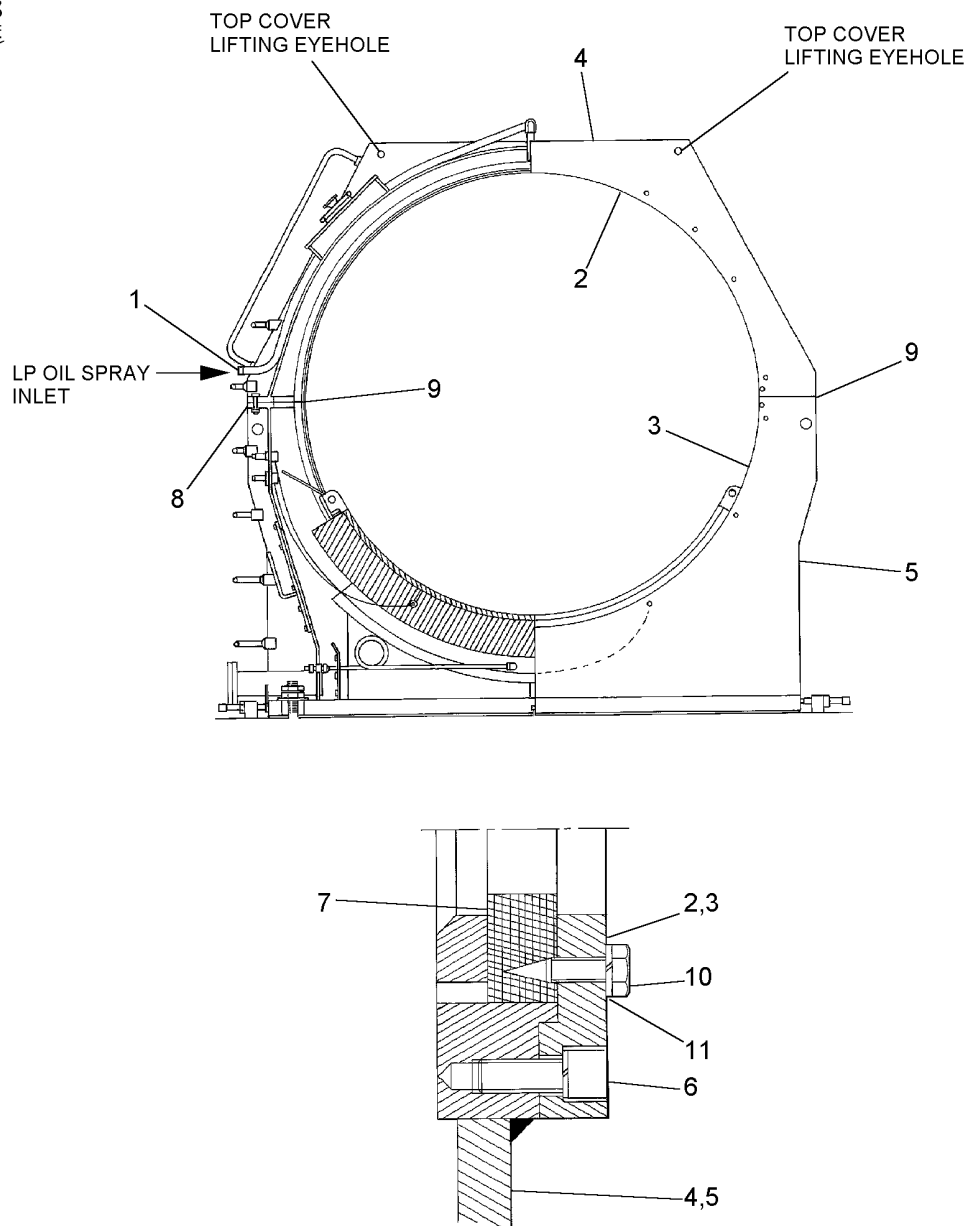


Figure 13

HFC001a  
(HFC001/073)



- |                               |                       |
|-------------------------------|-----------------------|
| 1. Pipe, Oil Spray, LP        | 7. Seal, Felt         |
| 2. Flange, Ring Seal, Top     | 8. Bolt and Washer    |
| 3. Flange, Ring, Seal, Bottom | 9. Seal               |
| 4. Cover, Bearing             | 10. Screw, Hex Hd, M6 |
| 5. Body, Bearing              | 11. Washer, Spring    |
| 6. Screw and Washer           |                       |

**Figure 14**

1. Cradle, Mill Lifting
2. Jack, Trolley
3. Bracket
4. Body, Mill
5. Bracket Assembly
6. Bolt, Hex Hd, M30 x 45
7. Jack
8. Nut, Security
9. Gauge, Dial
10. Trunnion, NDE
11. Bearing

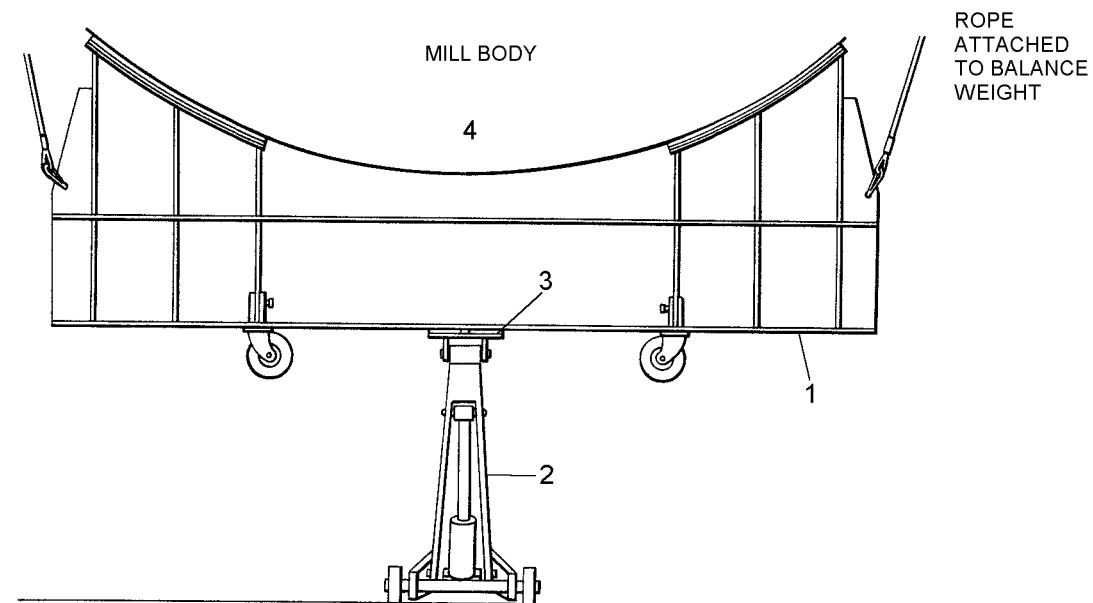
**COMPLETE MILL TRUNNION AND INTERNALS  
DISASSEMBLY AND REASSEMBLY PROCEDURE**

REFERENCE  
**PRN HF 004**

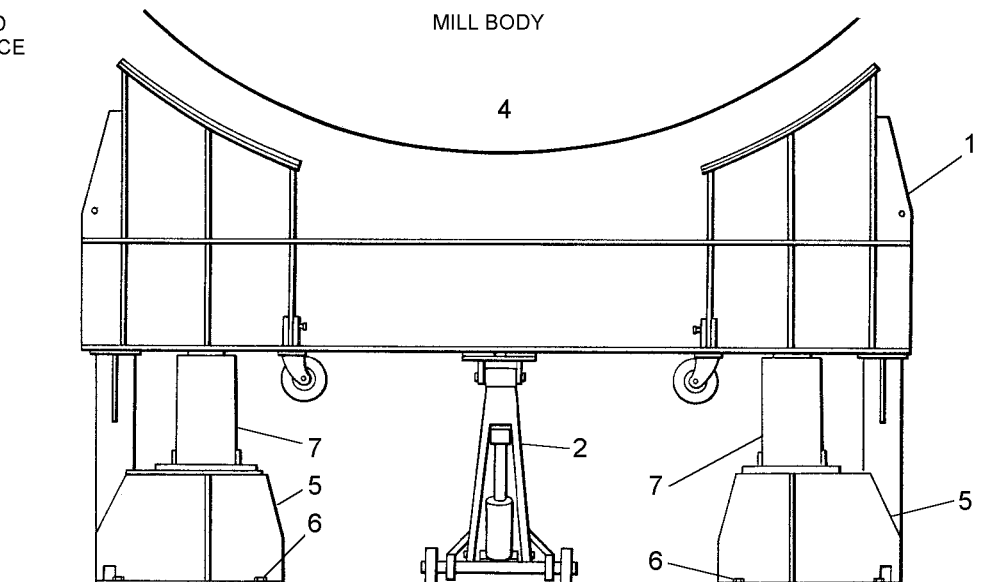
REV.  
**1**

PAGE  
**57**

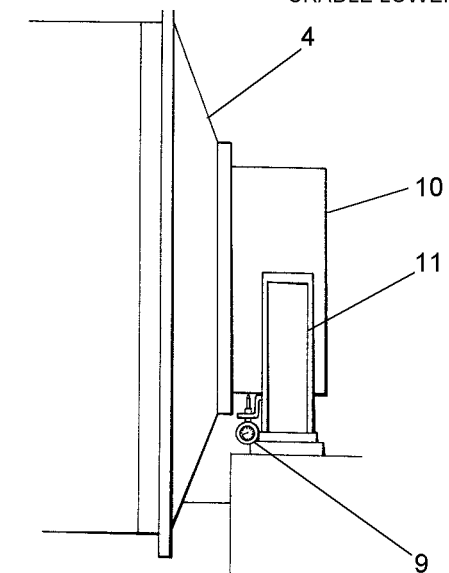
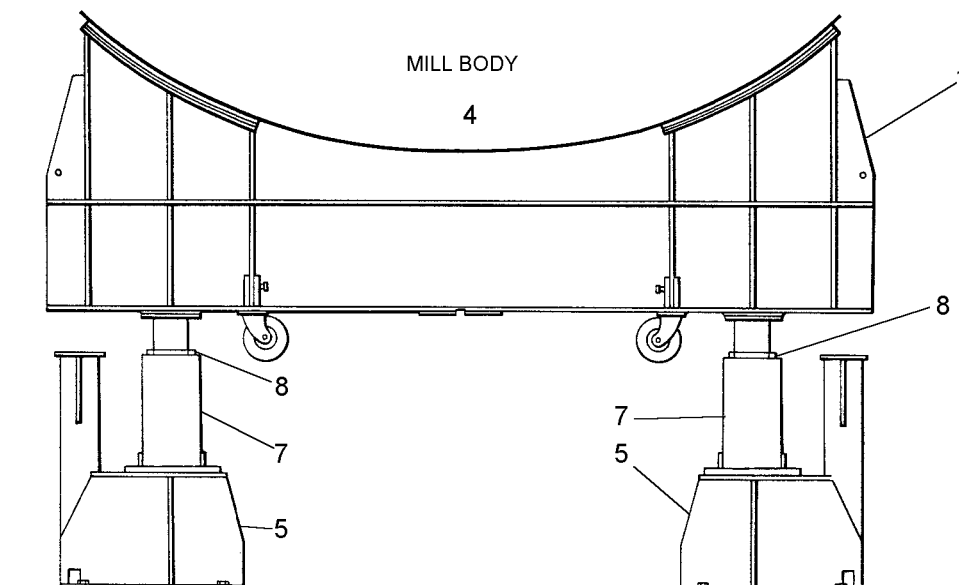
HFC066



MILL LIFTING CRADLE RAISED AGAINST BOTTOM OF MILL USING TROLLEY JACK



BRACKET ASSEMBLIES AND LIFTING JACKS FITTED AND LIFTING CRADLE LOWERED ONTO ASSEMBLIES



**Figure 15**