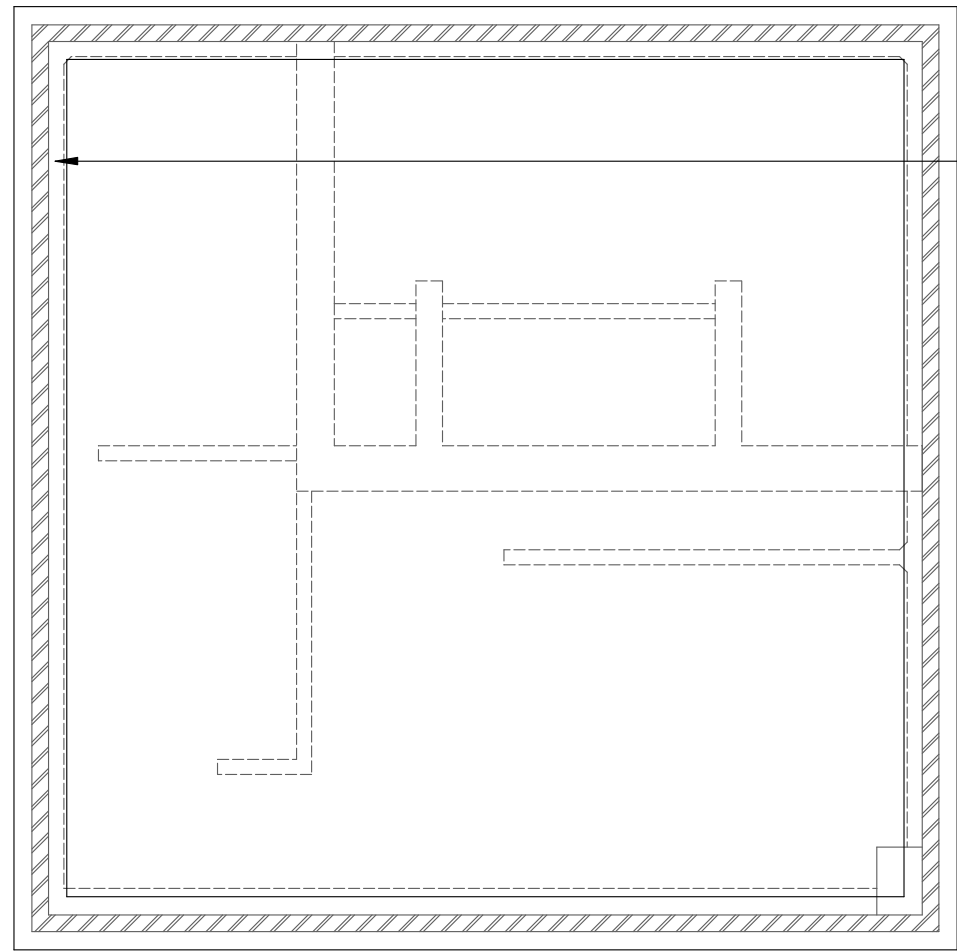


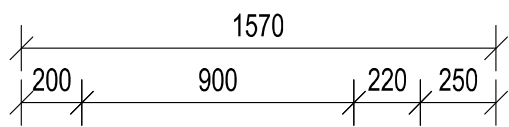
FLOOR LAYOUT PLAN  
Scale 1:100



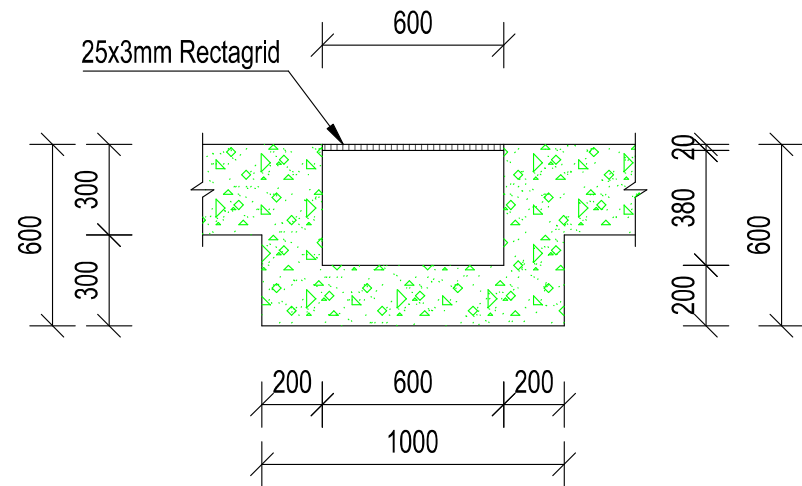
FOUNDATION PLAN  
Scale 1:100

Notes:  
- all concrete min 25MPa @ 28 days  
- reinforcing to bending schedules  
- concrete cover as indicated  
- all foundation excavations compacted to 95% MADD @ optimum moisture content  
- soil bearing capacity >100kPa

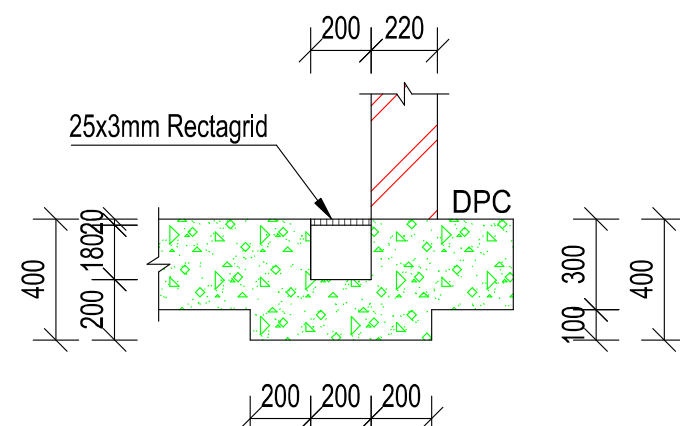
MEMBER	No OF	BARS PER MEMB	DIA	LENGTH	TOTAL NUM-BER	MARK	S C	B E N D I N G				
Dewater Ringbeam	1	2 6	Y10 R8	6000 1600	2 6	B SB	20 60	(6000) 300	200			
Dewater 700 Strip	1	72 132	Y12 R8	6000 2000	72 132	A SA	20 60	(6000) 600	200			
	8	10	12	16	20	25	32	40	TOT			
R	109		8	384					109			
Y									392			
TOT	109	8	384						500			



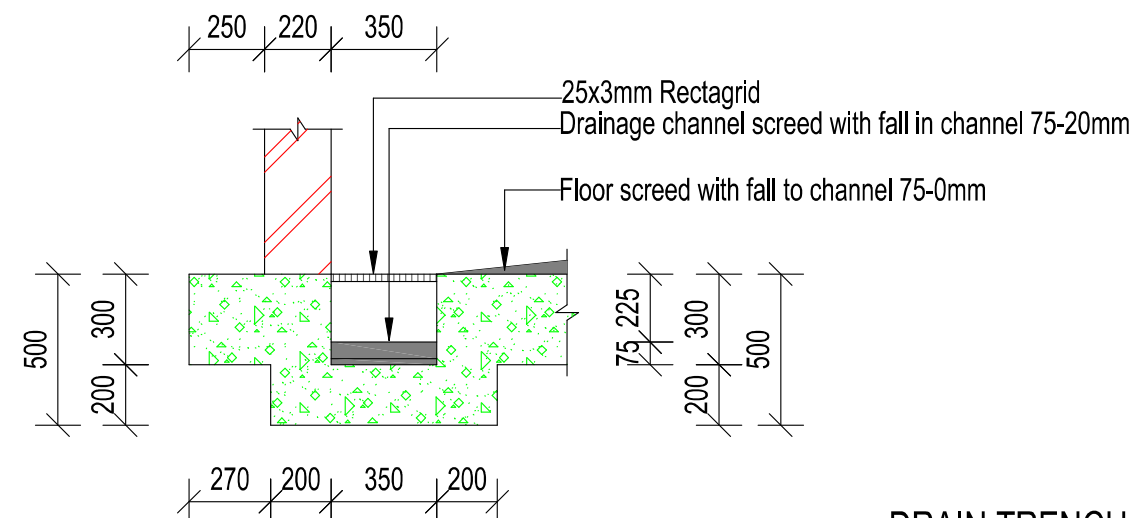
DRAINAGE PUMP SUMP  
SECTION B-B  
Scale 1:25



PIPE TRENCH  
SECTION C-C  
Scale 1:25



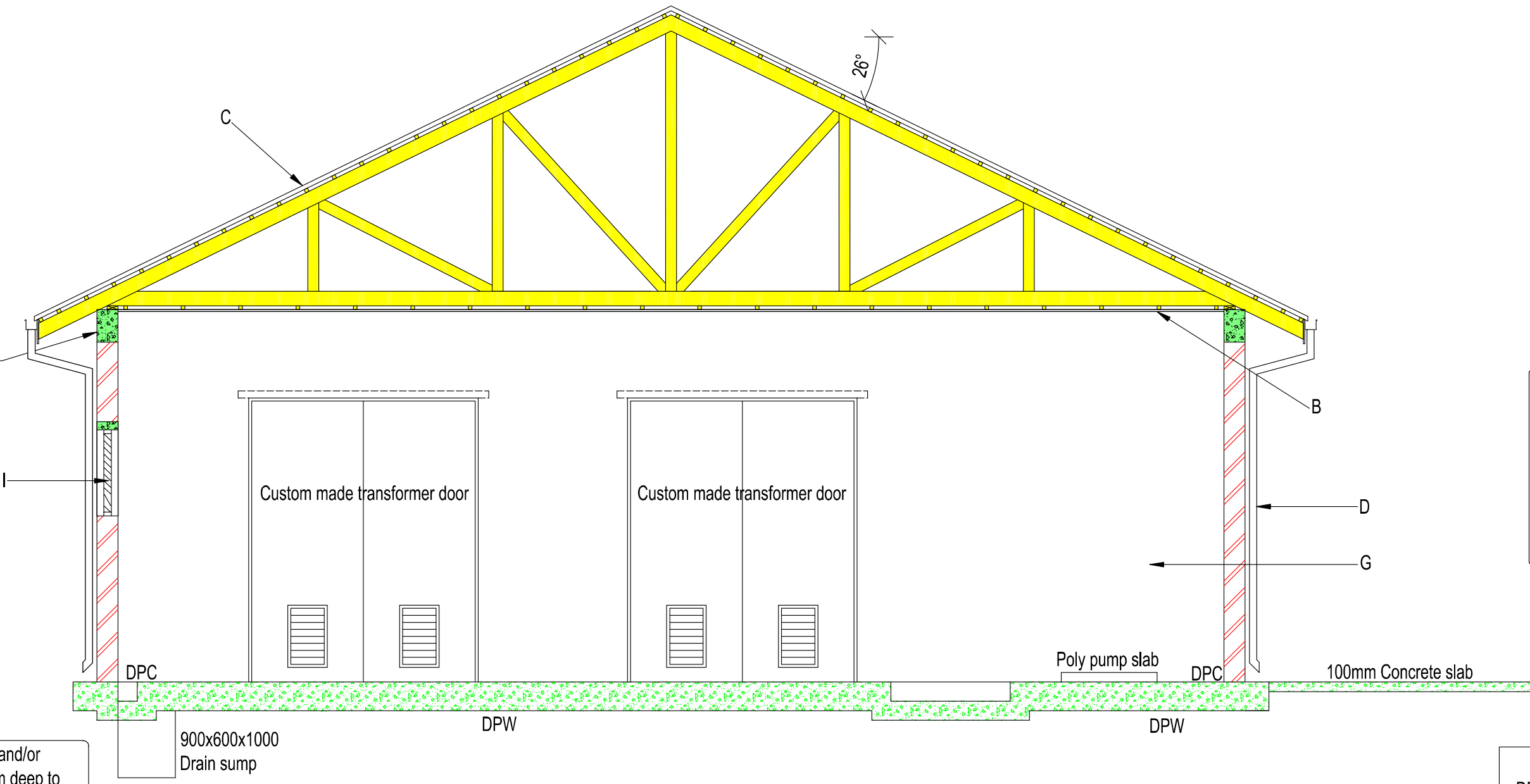
CABLE DUCT TRENCH  
SECTION D-D  
Scale 1:25



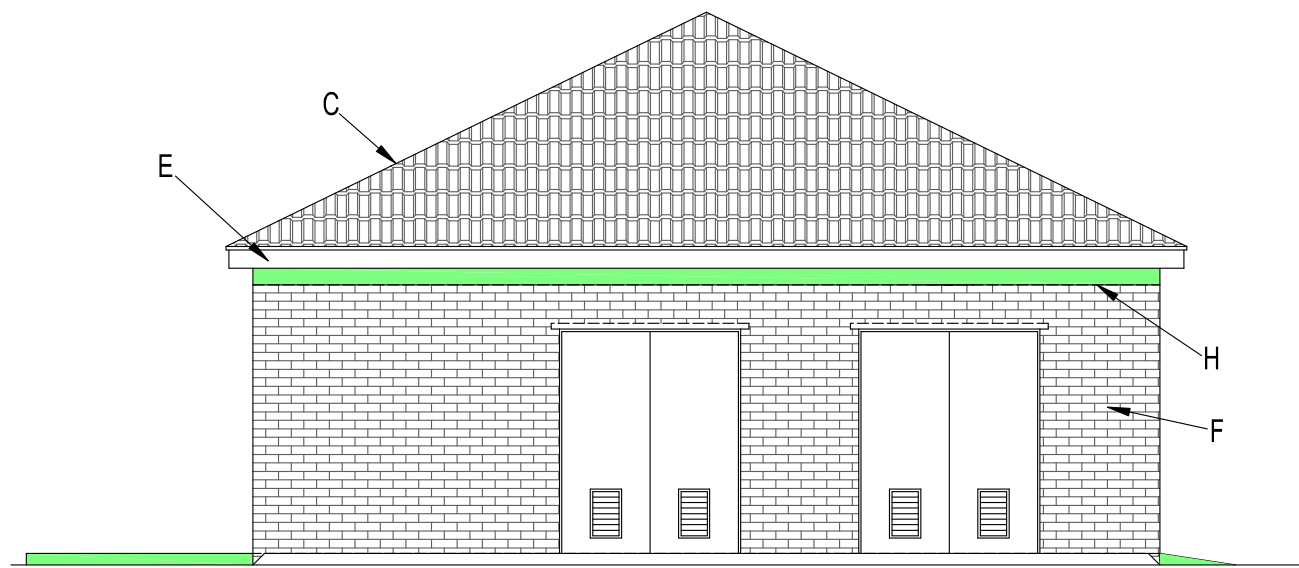
DRAIN TRENCH  
SECTION E-E  
Scale 1:25

220x340 25MPa reinforced concrete ring beam, smooth shutter finish, 25x25 chamfers for exposed edges, reinforcing to bending schedule. Roof wires fixed and cast in ring beam.

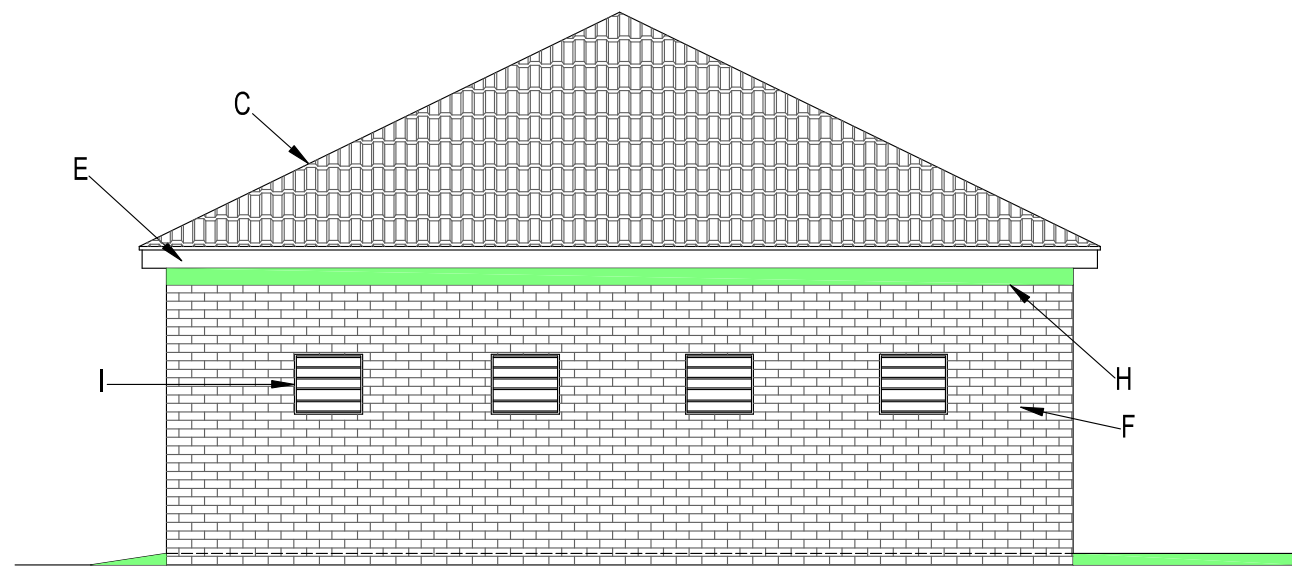
Over-excavate 600mm under foundations and/or floors, rip & compact instlu material 150mm deep to 93% MADD, backfill to final level with G5 or better material in max 150mm layers to 95% MADD @ optimum moisture content



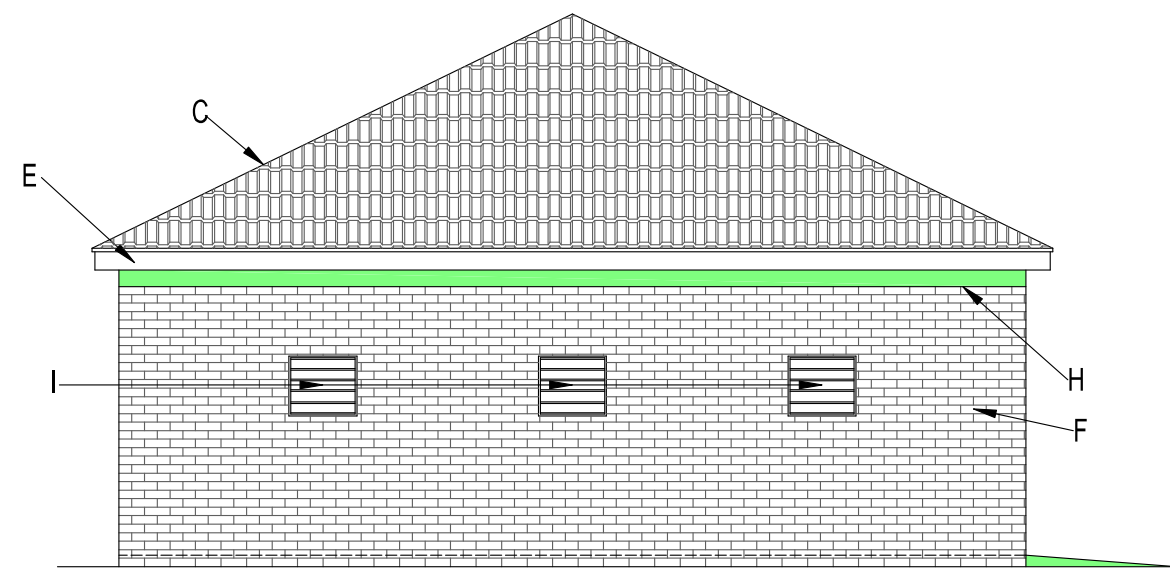
SECTION A-A  
Scale 1:50



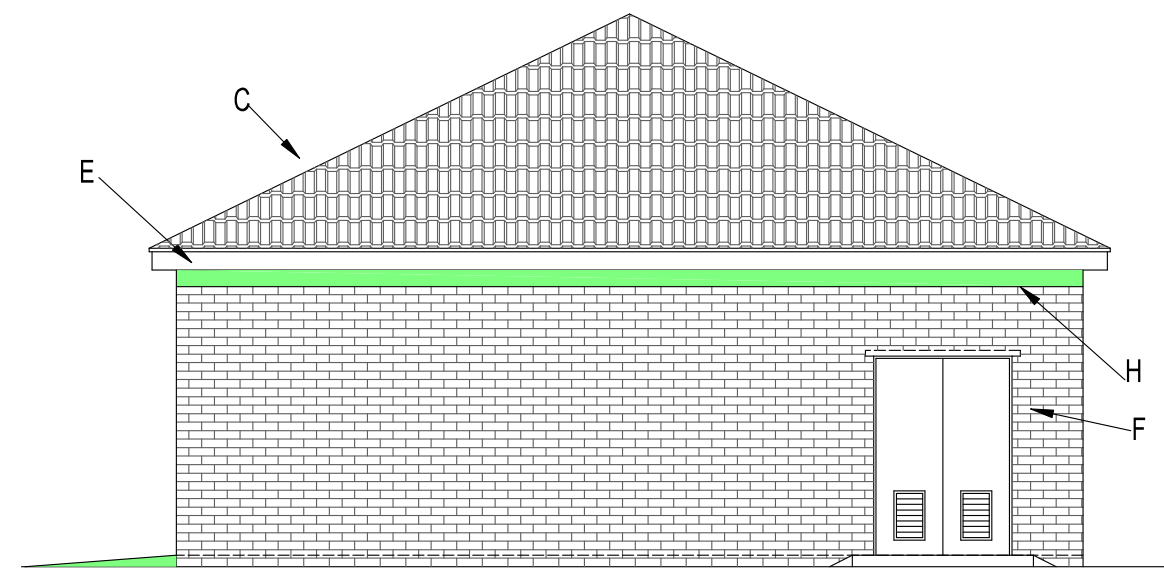
SOUTH ELEVATION  
Scale 1:100



NORTH ELEVATION  
Scale 1:100



WEST ELEVATION  
Scale 1:100



EAST ELEVATION  
Scale 1:100

Notes:  
- 14MPa masonry units  
- Class II mortar  
- Brickforce:  
- every course in foundation walls  
- every 4th course to lintel height  
- every course lintel to suspended floor and wallplate level

#### DESCRIPTION OF MATERIAL

A - 75-0mm SCREED ON 300mm CONCRETE SLAB FILLING COMPACTED TO 93% MADD IN LAYERS NOT EXCEEDING 150mm AT OPTIMUM MOISTURE CONTENT.

B - 6.4mm "RHINO" CEILING ON 38x38mm BATTENS @ 450mm c/c WITH CORNICE EXCEPT WHERE OTHERWISE SHOWN BY OWNER. USE SISOLATION ABOVE ALL CEILINGS.

C - CONCRETE ROOF TILES (STANDARD COLOUR) ON PREFABRICATED TIMBER TRUSSES TO ITC STANDARDS. ALL ITC CERTIFICATES TO BE SUBMITTED TO THE ENGINEER. ROOF FIXING TO SANS 10400/INHBRC SPECIFICATIONS

D - 76x100mm GALV. GUTTER WITH 76mm DOWNPIPES.

E - 230X10mm ASBESTOS CEMENT FASCIA'S PAINTED AS PER ENGINEER

F - APPROVED SABS SEMI-FACE BRICKS IN STRETCHER BOND WITH 10x10mm HORIZONTAL AND VERTICAL JOINTS.

G - APPROVED SABS PLASTER BRICKS IN STRETCHER BOND WITH 10x10mm HORIZONTAL AND VERTICAL JOINTS WITH 12mm PLASTER FOLLOWED BY PRIMER COAT & 2 COATS OF APPROVED ACRILIC PVA PAINT OUTSIDE & 2 COATS ENAMEL PAINT OUTSIDE.

H - 25MPa RC RINGBEAM

I - APPROVED VENTILATED LOUVRES.

#### ELECTRICAL SYMBOLS

1	SINGLE SWITCH	2	DOUBLE SWITCH
3	CEILING LIGHT	4	METER BOX
5	WALL MOUNTED LIGHT	6	DISTRIBUTION BOX
7	WALL PLUG	8	GEYSER
9	1.2m DOUBLE FLOURESCENT LIGHT		
10	9 kg DRY CHEMICAL FIRE EXTINGUISHER		

CONSULTANT

CONSULTING ENGINEERS

K&A PROJECT NO 713

K&A REVISION NO

**KING & ASSOCIATES**

"We Develop - Re a Tlhabolola"

63 SMIT AVENUE, FLAMWOOD P.O. BOX 1793 KLERKSDORP, 2571

TEL: (+27) 18 464 4482, FAX: (+27) 18 464 2384 E-MAIL: king@kinga.co.za

REV NO	DESCRIPTION	DRAWING

REVISION	DESCRIPTION	DATE	Int
REV NO			

APPROVAL	SIGNATURE	DATE
DESIGN BY: M. KROMHOUT		
DRAWN BY: S. MUTAMBIANWA		
CHECKED BY: M. KROMHOUT		
APPROVED BY: M. KROMHOUT		

NKANGALA DISTRICT MUNICIPALITY

P O Box 437  
Middeburg  
1050  
Tel: (+27) 13 249 2000  
Fax: (+27) 13 249 2145

PROJECT NAME

**REFURBISHMENT & UPGRADING OF THE  
DELMAS WASTE WATER TREATMENT WORKS**

DRAWING NAME

**SLUDGE DEWATERING BUILDING**

CONTRACT NO

**149743**

PROJECT NO

**713**

PROVINCE DISTRICT

MPUMALANGA NKANGALA

DATE SCALE SHEET NO

SEPT 2020 NTS 1 OF 1

DRAWING NO

**713/M/571**