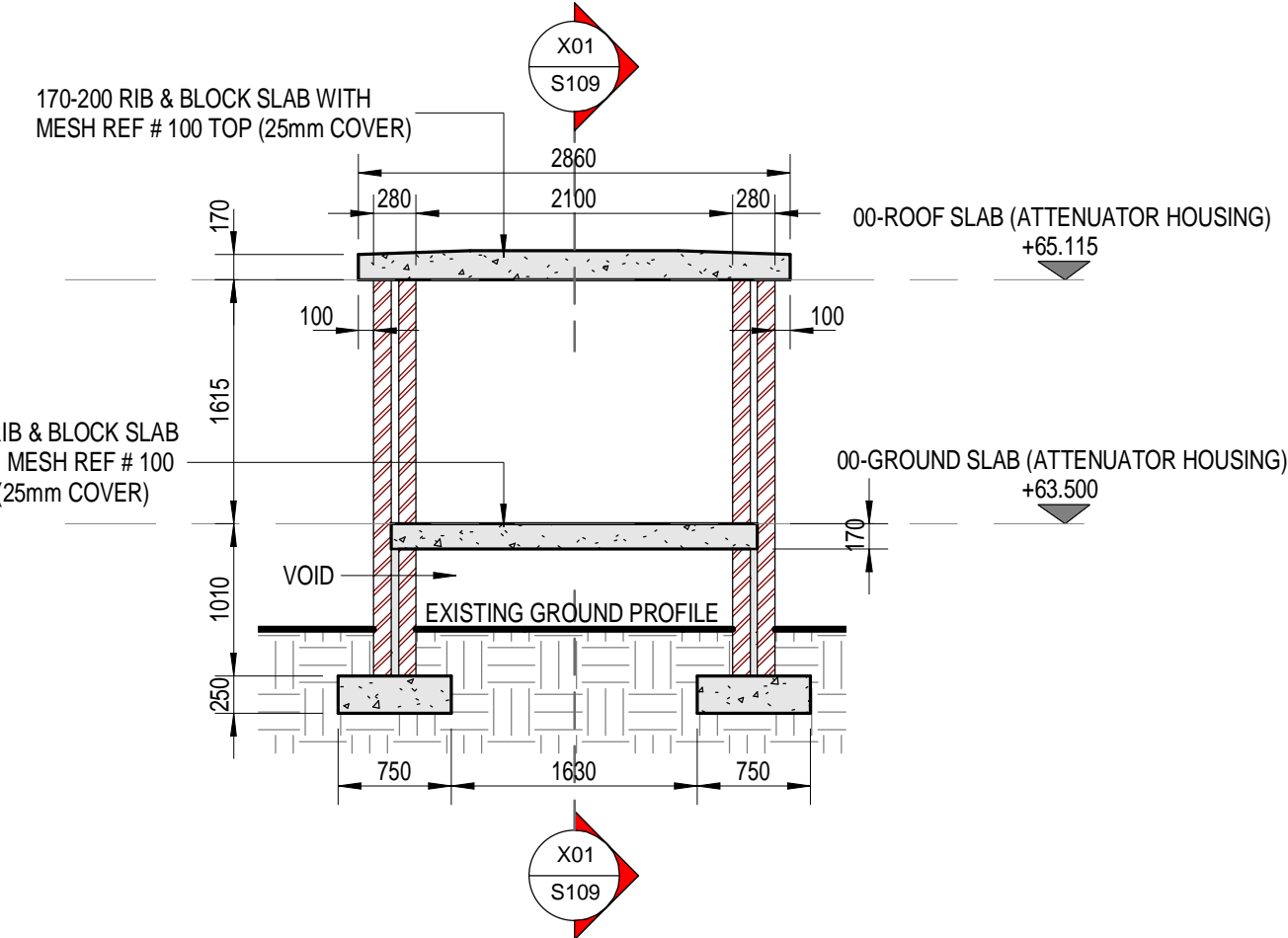
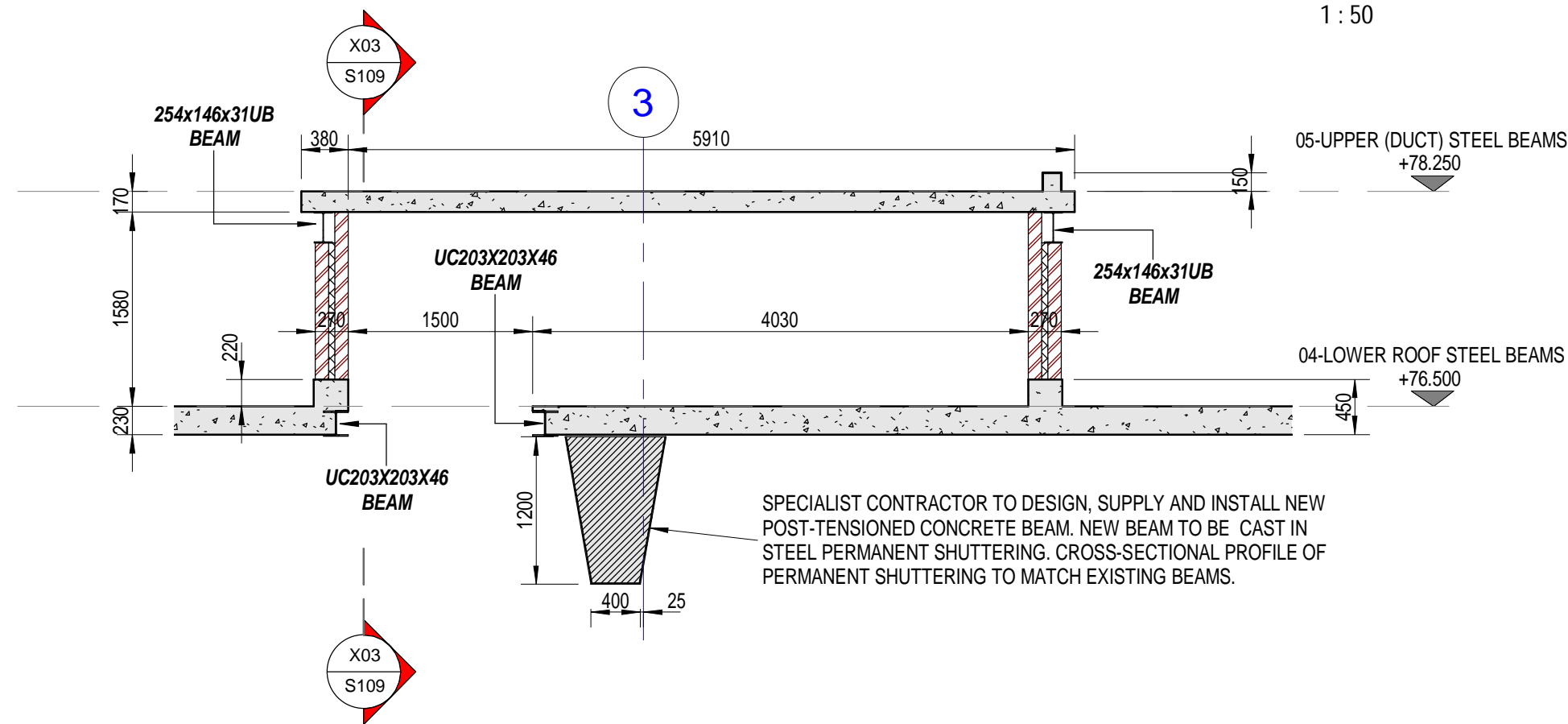


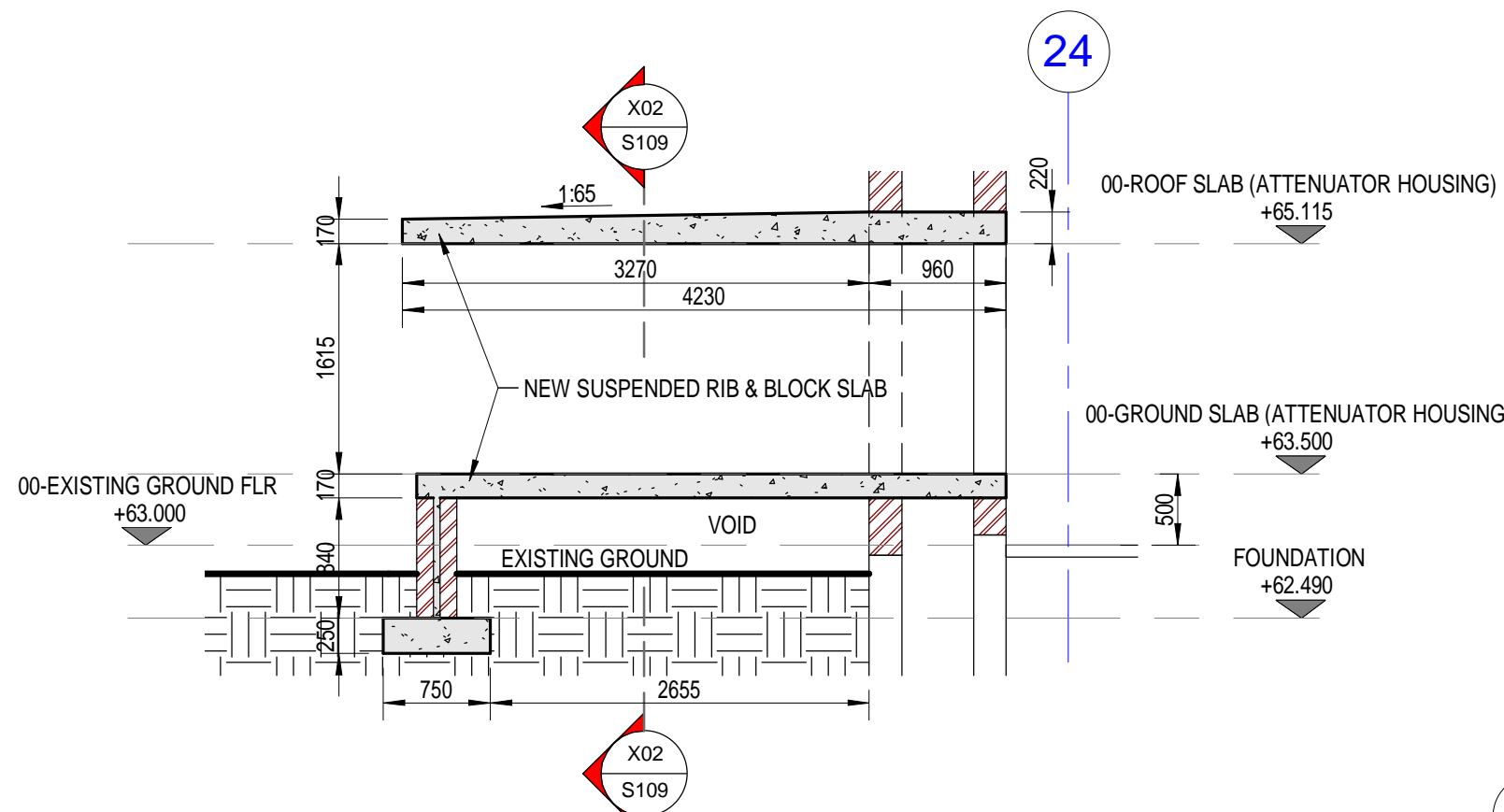
SECTION X03
1 : 50



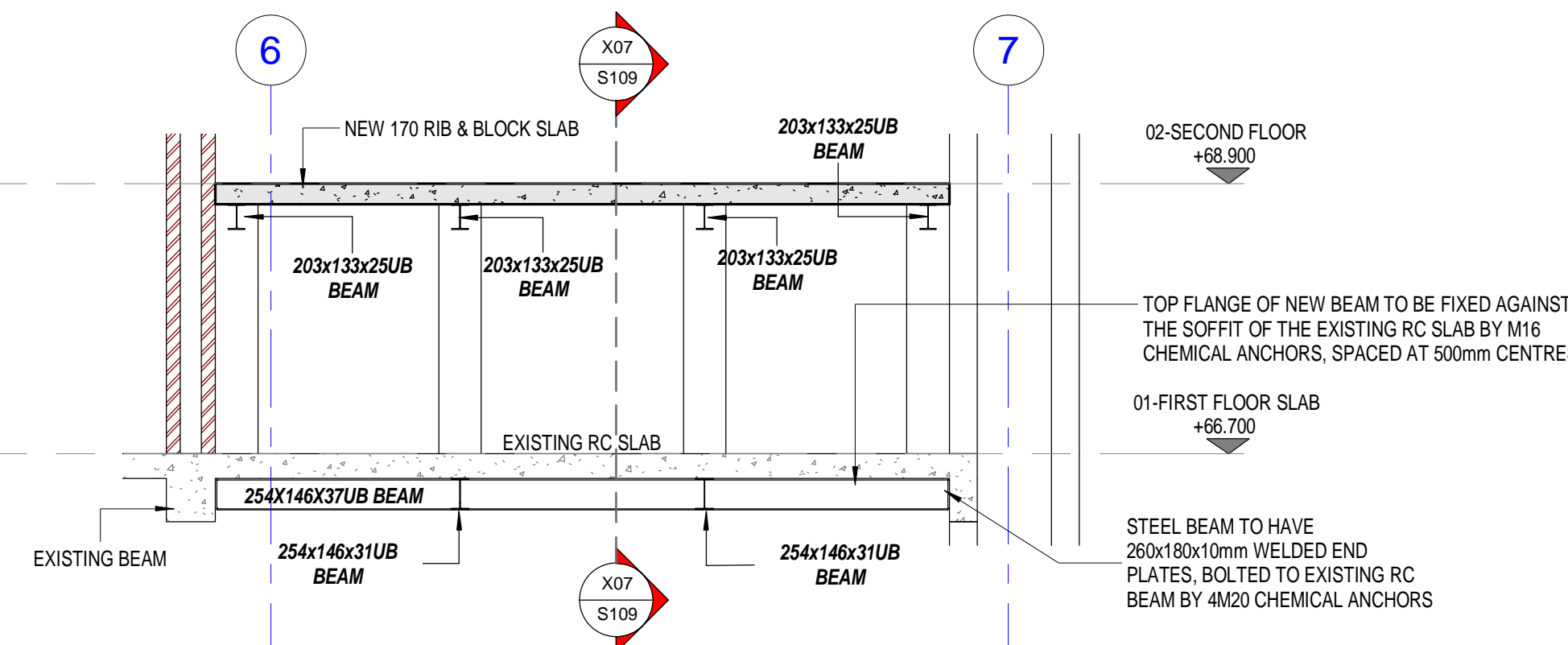
SECTION X02
1 : 50



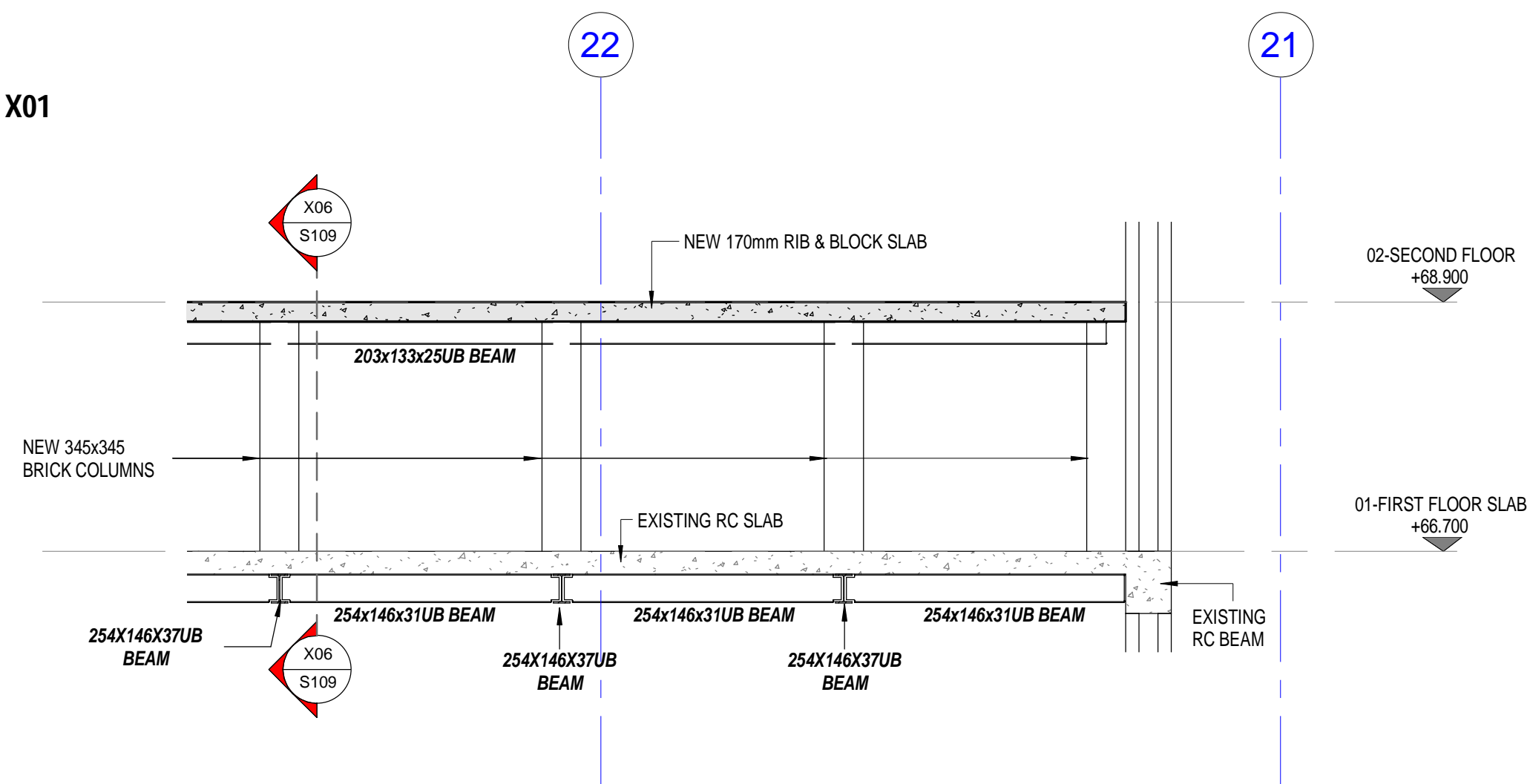
SECTION X04
1 : 50



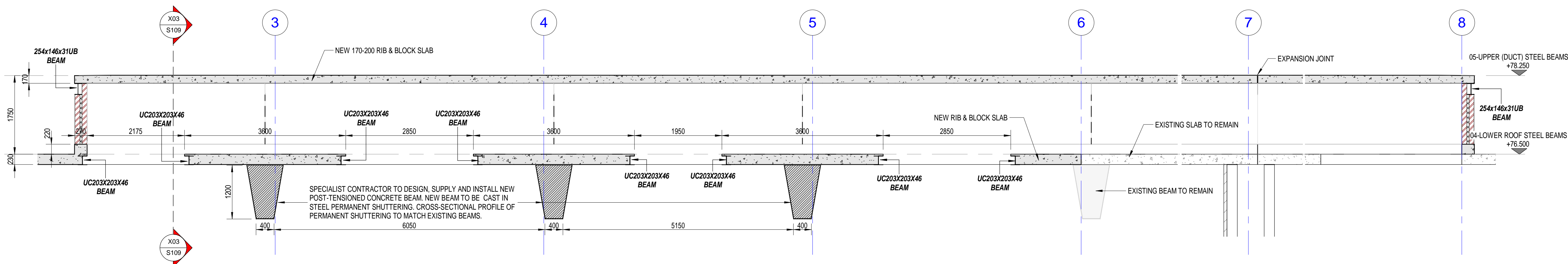
SECTION X01
1 : 50



SECTION X06
1 : 50

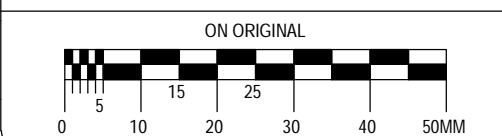


SECTION X07
1 : 50



SECTION X05
1 : 50

ALL DIMENSIONS AND LEVELS ARE TO BE VERIFIED ON SITE BY THE CONTRACTOR BEFORE COMMENCING ANY WORK.



GENERAL NOTES:

FOR GENERAL NOTES REFER TO DRG J2133-S101

SPECIFICATIONS FOR THE DESIGN, SUPPLY, INSTALLATION, STRESSING AND GROUTING OF UNBOUNDED SINGLE STRAND POSTENSIONING AND REINFORCEMENT FOR THE POSTENSIONED BEAMS.

1. THE BEAMS SHALL BE DESIGNED FOR THE DEAD LOADS IN ACCORDANCE WITH THE GENERAL ARRANGEMENT DRAWING.
2. THE BEAMS SHALL BE DESIGNED FOR A SUPERIMPOSED ROOF SLAB LOAD OF 0.25kN/m² AND BEAM LIVE LOAD OF 18kN/m.
3. THE TENDONS SHALL BE POSTENSIONED TO A MAXIMUM OF 80% OF THEIR ULTIMATE TENSILE STRENGTH.
4. ALL DESIGN LOAD FACTORS AND MINIMUM REINFORCEMENT SHALL COMPLY WITH SANS 10160 AND SANS 10100.

No	Date	Details	By
C	19/11/2021	ISSUED FOR TENDER	JM
B	18/10/2021	UPDATED & ISSUED FOR MEASUREMENT	JM
A	16/10/2021	ISSUED FOR MEASUREMENT	JM
Revisions			

Client



Gonang Consulting
Yes We Can

Wild Fig Business Park,
Block B, Unit 20,
10th Cranberry Street,
Hempden, 2170
Tel : +27 11 627 6756
info@gonang.co.za
www.gonang.co.za

Approved By

Johnson Matangi Pt Eng

Drawn By

MJ

Designed By

SM

Reviewed By

JM

Project

REFURBISHMENT OF TV STUDIO
6 IN TV CENTRE ON ERF 2
UTSAAISENTRUM

Description

TYPICAL SECTIONS AND
DETAILS

Discipline

STRUCTURAL ENGINEERING

Scale

1 : 50

Date

October 2021

Project No

J2133

Rev

S109

C