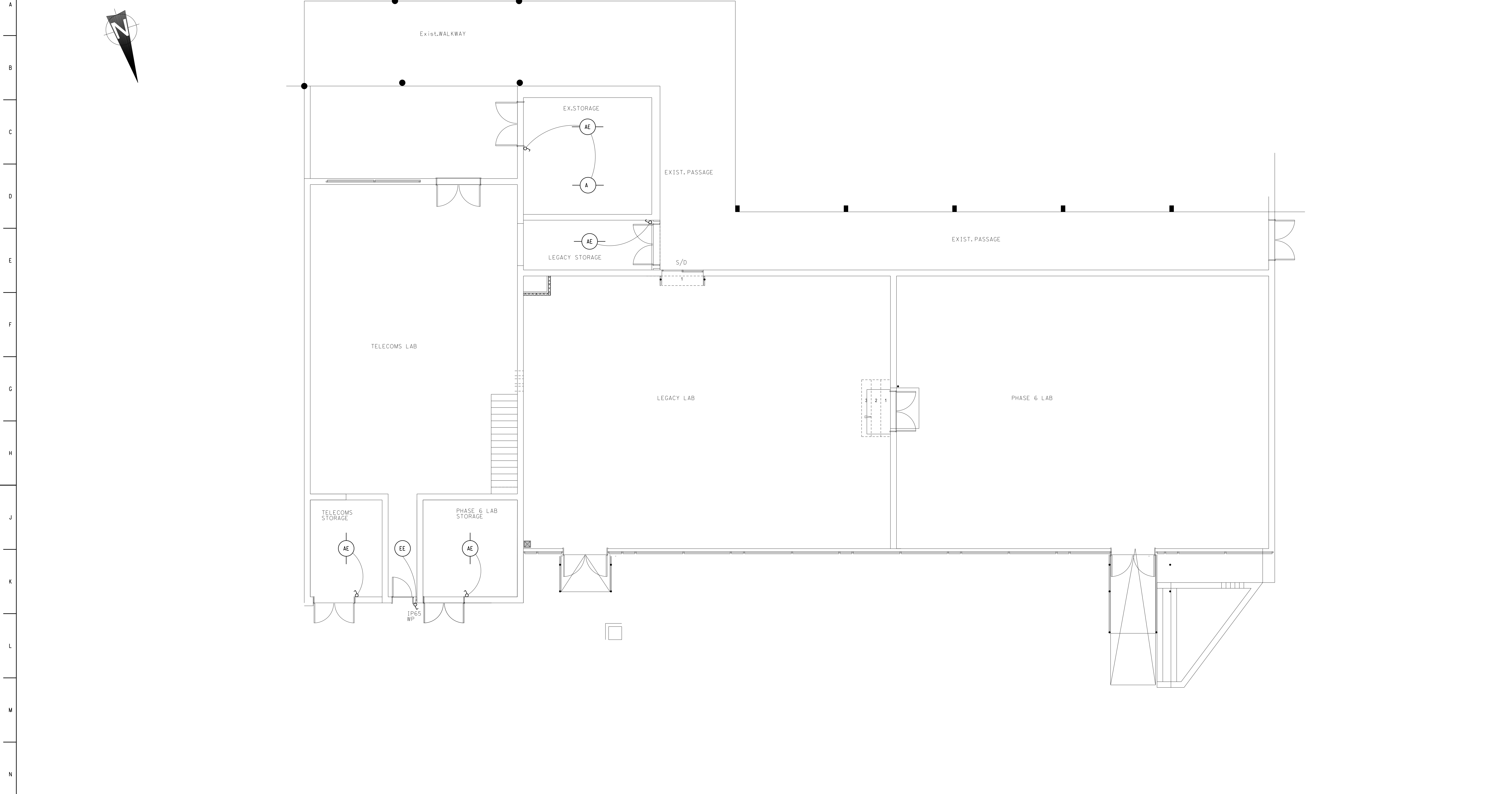


1 2 3 4 5 6 7 8 9 10 11 12 13 14 15 16 17 18 19 20 21 22



SCHEDULE OF LUMINAIRES WITH LAMPS, & OTHER ELECTRICAL EQUIPMENT

PLAN REF	DESCRIPTION	SUPPLIERS	CAT No
A	SURFACE MOUNTED LED LUMINAIRE FOR EXPOSED T-CEILINGS SIZE 1200x600. POWER 60W LED. COLOUR: 4000K	LASCON LIGHTING	LBP-24-60W-LED
AE	SURFACE MOUNTED LED LUMINAIRE FOR EXPOSED T-CEILINGS SIZE 1200x600. POWER 60W LED. COLOUR: 4000K	LASCON LIGHTING	LBP-24-60W-LED/EMG
EE	BULKHEAD LUMINAIRE, ALUMINIUM DIE-CAST BLACK HOUSING, POWER 23.4W. COLOUR TEMP. 4000K, FACTORY CONVERTED TO EMERGENCY MODE WITH INVERTER AND BATTERY PACK FOR 1 HOUR.	LASCON LIGHTING	RIMINI-DOME-Z1W-LED/EMG

**NOTES:**  
 1. ELECTRICAL INSTALLATION SHALL BE IN ACCORDANCE WITH:  
 1.1. SANS 10142  
 1.2. MODEL PREAMBLES FOR TRADES, SECTION 'S' ELECTRICAL WORK  
 1.3. TECHNICAL SPECIFICATION-ELECTRICAL WORK  
 2. EARTH & NEUTRAL TERMINALS SHALL BE OF THE PRESSURE PLATE TYPE WITH CAPTIVE SCREWS  
 3. MARKED UP AS BUILT DRAWINGS SHALL BE SUBMITTED AFTER COMPLETION OF WORK  
 4. ALL THE EXISTING LUMINAIRES SHALL BE REMOVED AND NEW INSTALLATION SHALL BE DONE AS SHOWN ON PLAN.  
 LUMINAIRES TO BE REMOVED:  
 TELECOMS STORAGE - 1 LUMINAIRE  
 PHASE 6 LAB STORAGE - 1 LUMINAIRE  
 LEGACY STORAGE - 1 LUMINAIRE  
 5. ALL WIRING FOR THE LUMINAIRES SHALL BE REPLACED, FROM DB TO LUMINAIRES AND SWITCH.  
 6. RE-USE EXISTING LIGHT SWITCHES

**ELECTRICAL LEGEND:**  
 (IN ACCORDANCE WITH NRS002)  
 2 x 16A 3 PIN SWITCHED SOCKET-OUTLET  
 16A 230V LIGHT SWITCH  
 WP WEATHERPROOF

**FINAL DESIGN FOR CONSTRUCTION**

APPROVED BY	REVISION DESCRIPTION	DRAWN	CHECKED	DATE	SCALE	REFERENCE DRAWINGS
<i>[Signature]</i>						
DATE: 04/12/2025	Eskom National Transmission Company South Africa SOC Ltd Reg No 2021/539129/GO					
CHECKED BY	<b>SIMMERPAN COMPLEX</b> STORAGE (LEGACY, TELECOMS AND PHASE 6) LIGHTING INSTALLATION LAYOUT					
DATE: 04/12/2025						
DRAWN BY						
DATE: 02/11/2025						
SCALE: AS SHOWN	SIMCO25P02-SE-E64 5					0

1 2 3 4 5 6 7 8 9 10 11 12 13 14 15 16 17 18 19 20 21 22