

- NOTE'S:
- ALL NUTS AND BOLTS USED FOR FIXING EARTH STRAPS TO GLAND PLATES AND GLAND PLATES TO CABINET FRAME SHALL BE ZINC BLUE TRIVALENT PASSIVATED
  - GLAND PLATES AND ASSOCIATED NUTS WELDED TO GLAND PLATE ON BOTH TOP AND BOTTOM SHALL BE BLUE TRIVALENT PASSIVATED TO 25 MICRON'S
  - THE GLAND PLATE'S FOR TOP AND BOTTOM TO BE PUNCHED AND PLASTIC FILLER CAPS FITTED BY THE MANUFACTURER
  - CABLE TRUNKING IS TYPE E17 (100x60mm)
  - ALL EARTH POINTS ARE TO BE FREE OF PAINT OR ANY OTHER NON CONDUCTIVE MATERIAL
  - MOUNTING EQUIPMENT BRACKET FOR 19" RACK EQUIPMENT TO IEC STANDARD PUBLICATION 60297
  - CABINET PROTECTION RATING TO I.E.C. STANDARD PUBLICATION 60529, IP-54 MINIMUM
  - CABINET COLOUR SHALL BE LIGHT GREY TO SABS 1091, G29 CORROSION PROTECTION AND PAINT FINISH TO ESKOM APPROVAL
  - 40 CAGE NUTS AND CHROMEPLATED SCREWS FOR MOUNTING SHELVES ON 19" RACK TO BE SUPPLIED WITH EACH CABINET
  - 6mm TAPPED HOLES REQUIRED ON EARTH BAR EVERY 100mm FOR THE FULL LENGTH OF THE EARTH BAR
  - ALL BRAIDED COPPER EARTH STRAPS SHALL BE FITTED WITH SUITABLE LUGS
  - M6 BOLTS WELDED TO THE TOP AND BOTTOM OF BOTH DOORS AND SHALL BE COVERED OR MASKED DURING THE PAINTING PROCESS
  - STUDS TO BE COVERED OR MASKED DURING PAINTING PROCESS
  - 19" MOUNTED CIRCUIT BREAKER BOARD DRAWING No: 0.54/6079
  - FABRICATION - MILD STEEL 2mm WELDED CONSTRUCTION
  - ACCESS: FRONT AND REAR
  - DOORS SHALL BE OF THE DOUBLE STEP DESIGN (10mm)
  - EQUIPMENT "L" SHAPED BRACKET SHALL BE ZINC COATED AND TRIVALENT BLUE PASSIVATED
  - EACH DOOR SHALL HAVE 3 HINGES
  - ESD POINTS ARE NOT REQUIRED AT THE REAR OF THE PANEL

REV	REVISION TO MASTER	BY	CHKD	AUTH	DATE
9	PNH ADDED	R.V	A. MAJOZI	T. SHEERIN	20/05/21
8	REGISTRATION NUMBER CHANGED, CHANGED EARTH BAR TO 25x3mm	R.V	AJ	H.A.M	06/2015
7	NOTE 19, ESD POINTS	R.V	K. NAICKER	K. NAICKER	29/08/2013
6	NEW TITLE BLOCK DESCRIPTION REVISED.	Q.DDTE	K. NAICKER	K. NAICKER	28/05/2013
5	CHANGED LABEL DIMENSIONS TO COMPLY WITH SECONDARY PLANT LABELING STANDARD	S.D	P.T.G	M.A.S	19/01/2009
4	19" MOUNTED C/B BOARD EXTRA EARTH STRAPS ADDED	S.D	P.T.G	M.A.S	16/10/2008
3	UPGRADE PANEL AND INSET 'C' ADDED	S.D	P.T.G	P.T.G	08/01/2001

REV	REVISION DESCRIPTION	BY	CHKD	AUTH	DATE
PROJECT APPROVED	DESIGN APPROVED	AJ.POLLARD			
DATE	DATE	29/09/1988			
SCHEME APPROVED	DESIGN CHECKED	AJ.POLLARD			
DATE	DATE	29/09/1988			

Eskom Holdings SOC Ltd  
Reg No 2002/015527/30

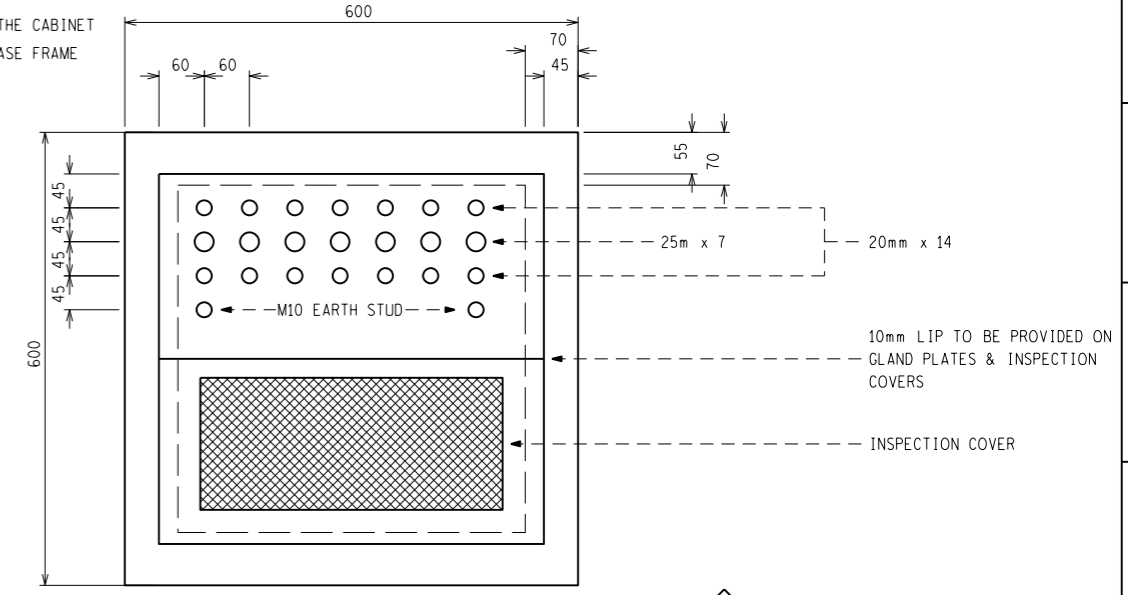
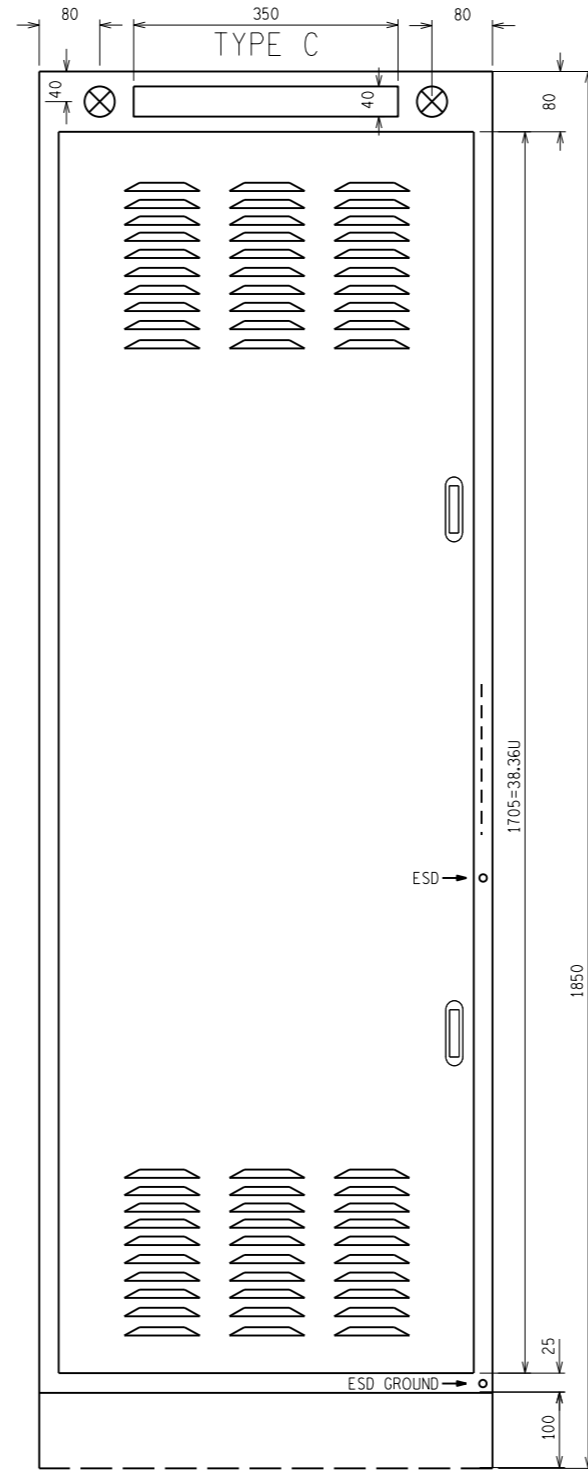
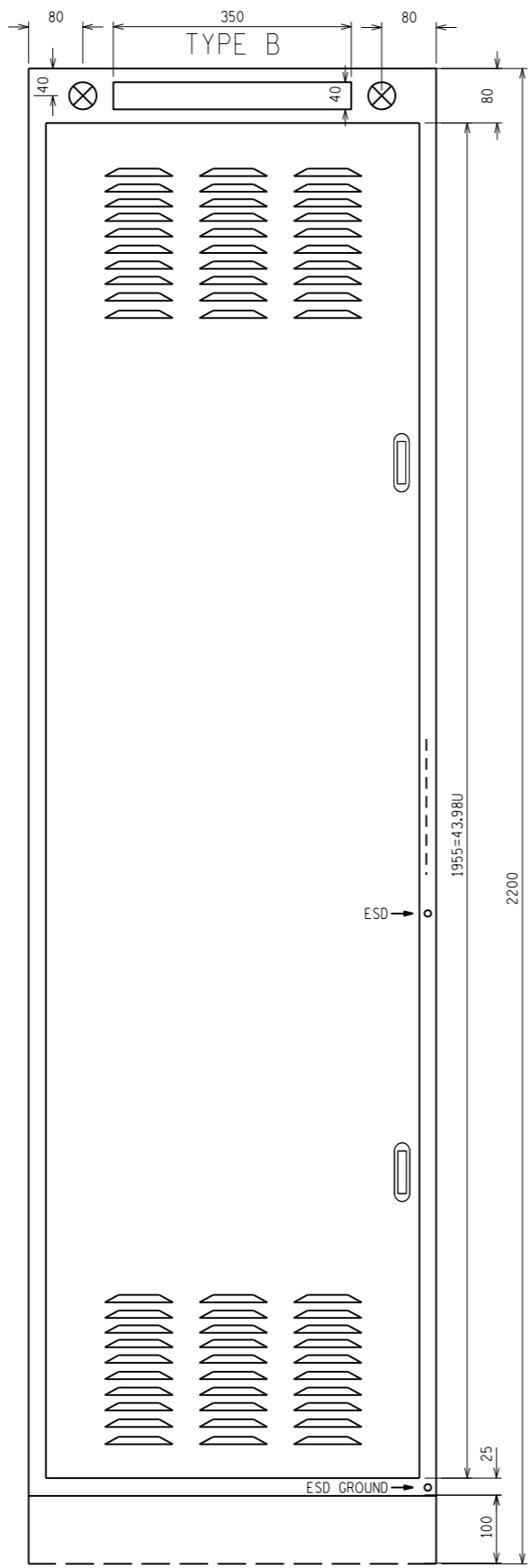
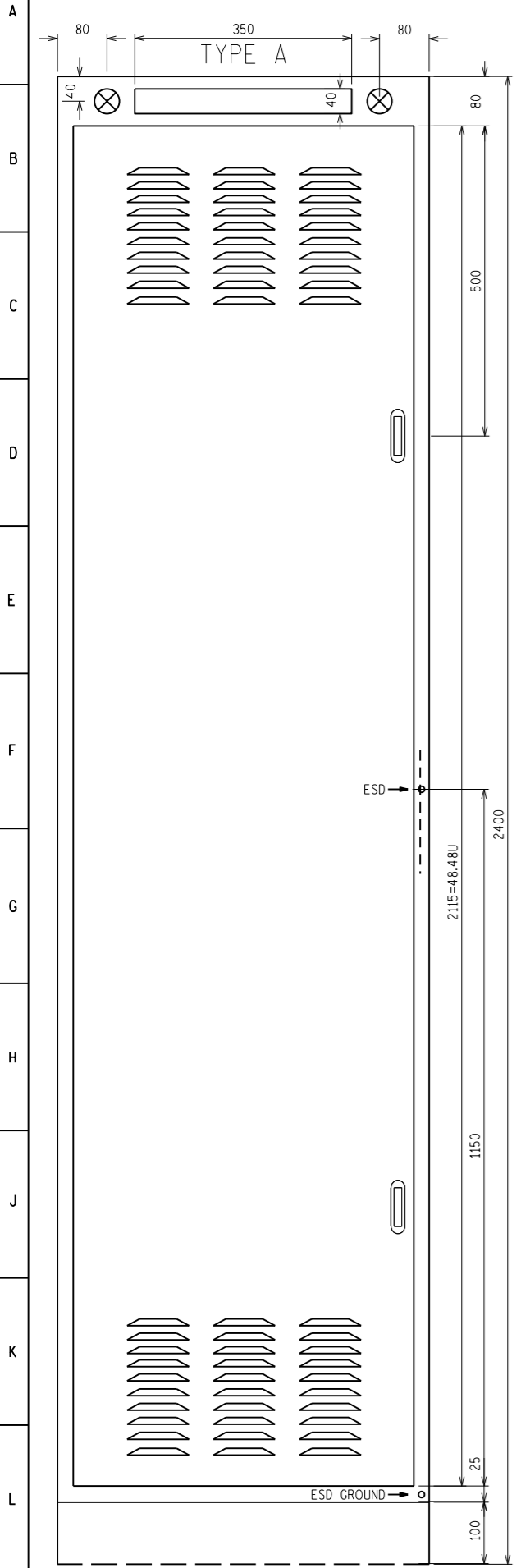
**STANDARD EQUIPMENT CABINET**

**0.53/1833**

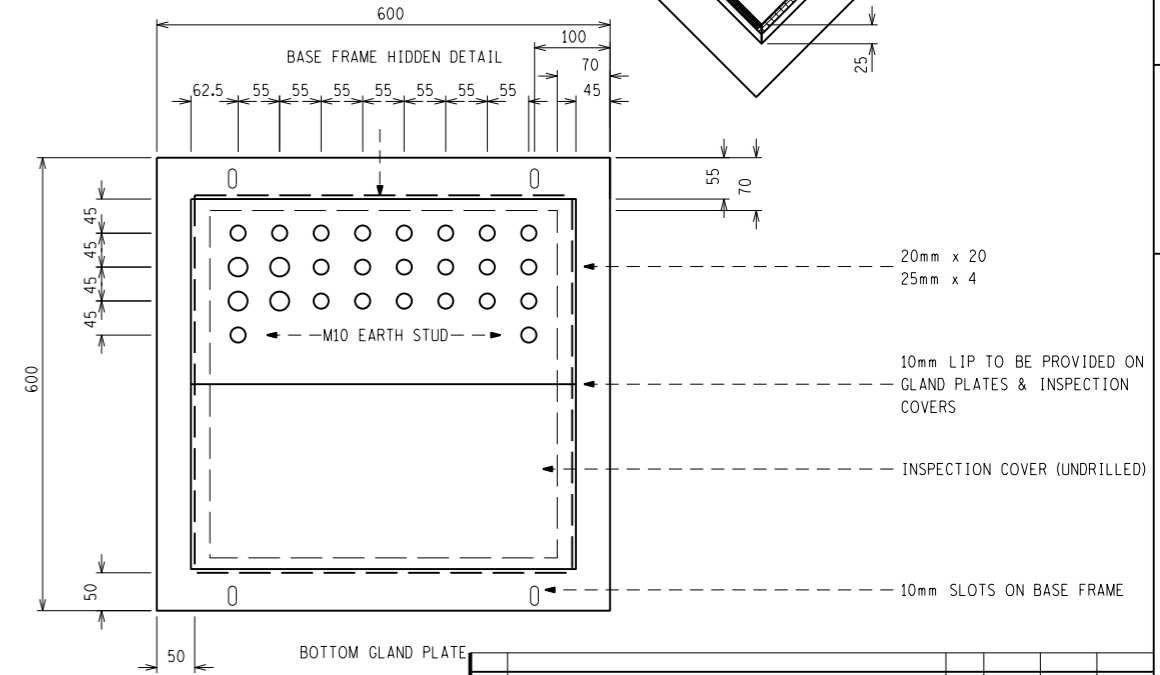
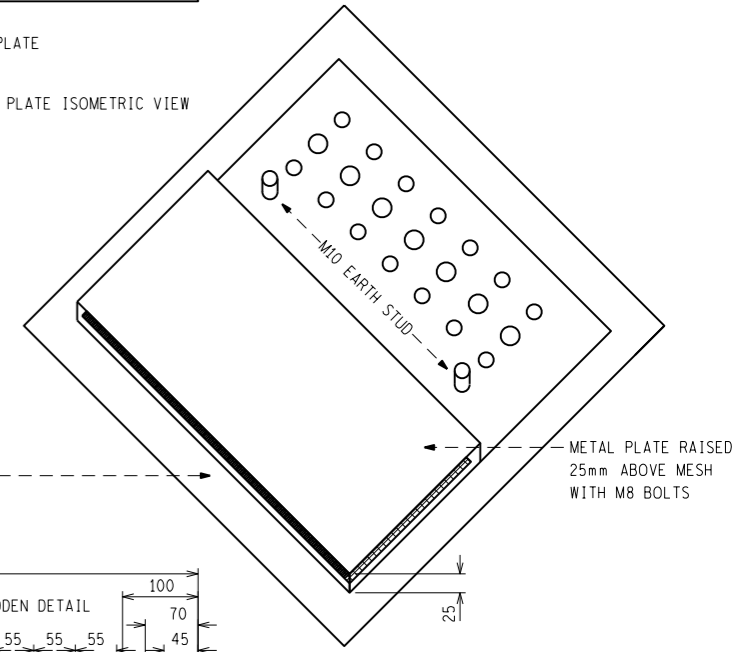
SHEET NUMBER	0
REVISION	9

NOTES:

- M8 BOLTS SHALL BE USED TO FIX THE GLAND PLATES TO THE CABINET
- M8 BOLTS SHALL BE USED TO FIX THE CABINET TO THE BASE FRAME



TOP GLAND PLATE  
TOP GLAND PLATE ISOMETRIC VIEW



BOTTOM GLAND PLATE

REV	DESCRIPTION	BY	CHKD	AUTH	DATE
3	PNH ADDED	R.V	A. MAJOZI	T. SHEERIN	20/05/21
2	REGISTRATION NUMBER CHANGED	R.V	A.M	H.A.M	06/2015
1	MOVED ESD POINTS	R.V	K. NAICKER	K. NAICKER	29/08/2013
REV	REVISION TO MASTER	BY	CHKD	AUTH	DATE

REV	REVISION DESCRIPTION	BY	CHKD	AUTH	DATE
PROJECT APPROVED	DESIGN APPROVED	K. NAICKER		Eskom Holdings SOC Ltd Reg No 2002/015527/30	
DATE	DATE	12/01/2013			
SCHEME APPROVED	DESIGN CHECKED				
DATE	DATE				
PROJECT CHECKED	DESIGN DRAWN BY	G.OTTE			
DATE	DATE	28/05/2013			
PROJECT DRAWN BY	SCALE	1:5			
DATE	DATE				

STANDARD EQUIPMENT CABINET  
0.53/1833  
SHEET NUMBER 1 REVISION 3