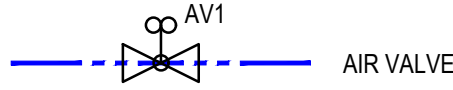


### LEGEND:

#### PROPOSED:

- 160mm uPVC 160mm uPVC BULK PIPELINE  
200mm uPVC 200mm uPVC BULK PIPELINE  
250mm uPVC 250mm uPVC BULK PIPELINE

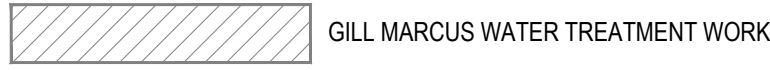


AIR VALVE

SURFACE MOUNTED FIRE HYDRANT



SCHEDULE OF FITTING DETAIL REFERENCE NUMBER  
COORDINATE REFERENCE NUMBER



ELEVATED WATER TANK

#### CO-ORDINATE TABLE

POINT DESCRIPTION	Y - COORD	X - COORD
A1	23582.529	3765020.706
A2	23577.846	3764982.173
AV1	23876.937	3764961.604
B1	23635.766	3764975.028
B2	23737.347	3764970.249
B3	23844.388	3764965.067
B4	23861.353	3764964.249
B5	24061.369	3764930.302

### NOTES:

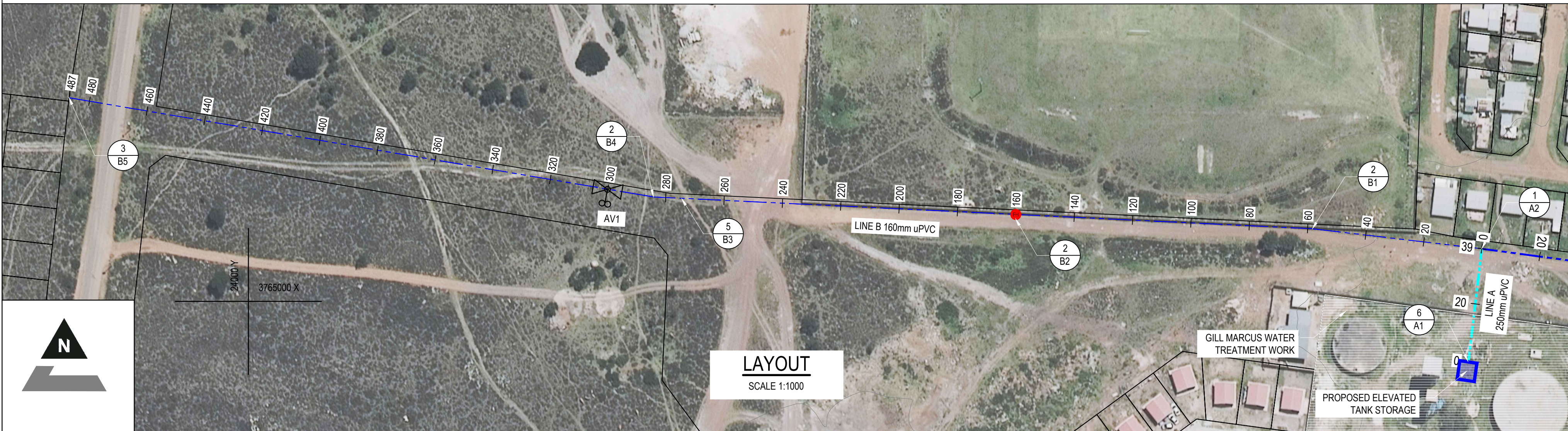
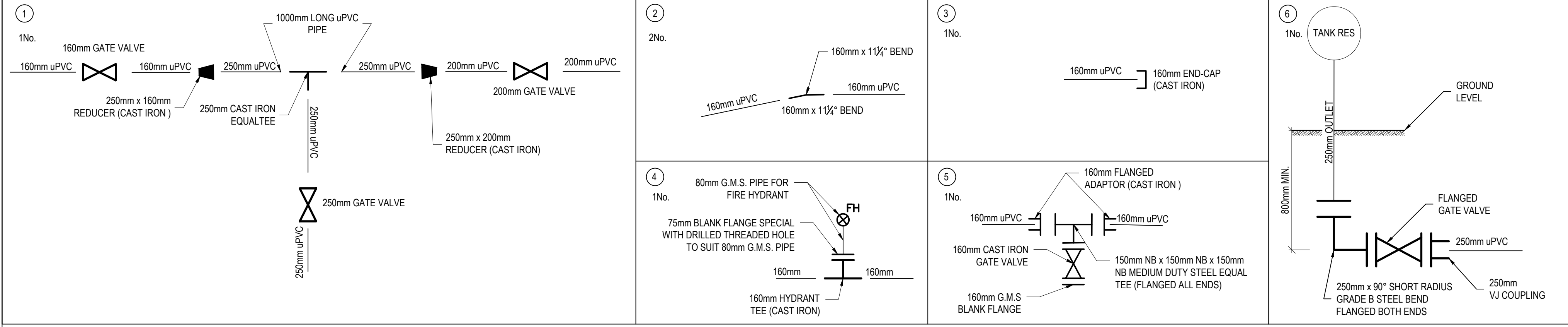
#### MATERIALS

- PIPE DIAMETERS FROM 75mm TO 250mm TO BE uPVC CLASS 09 TO SABS 966-1. uPVC PIPES AND FITTINGS SHALL BE PROVIDED WITH SPIGOT AND SOCKET RUBBER RING JOINTS AND SHALL COMPLY WITH SABS 966-1.
- ALL uPVC FITTINGS - uPVC CLASS 16 TO SABS 966.
- CAST IRON GATE VALVES WITH ANTI-CLOCKWISE CLOSING, COMPLYING WITH SABS 664.
- ALL FLANGES SHALL BE DRILLED TO SABS 1123/1600/3 AND ALL BOLTS, NUTS AND WASHERS SHALL BE STAINLESS STEEL GRADE 316 AND SHALL COMPLY WITH EN ISO 3506-A4.
- ALL CAST IRON FITTINGS TO BE RILLSAN OR FBE COATED.
- ALL STEEL PIPES AND FITTINGS UP TO 150mmNB SHALL BE MEDIUM DUTY STEEL PIPES TO SABS 62 WITH HEAVY DUTY GALVANIZING AND PROTECTIVE COATINGS, AND SHALL BE FLANGED.
- ALL STEEL PIPES AND FITTINGS LARGER THAN 150mmNB SHALL BE GRADE B STEEL PIPES WITH 4.5mm MINIMUM WALL THICKNESS TO SABS 719 WITH HEAVY DUTY GALVANIZING AND PROTECTIVE COATINGS, AND SHALL BE FLANGED.
- VALVE AND UNDERGROUND HYDRANT BOXES TO BE BLUE THERMO PLASTIC WITH CONCRETE MARKERS.
- THRUST BLOCK DESIGN TO SABS 1200-L.

#### COVER TO CROWN OF PIPES

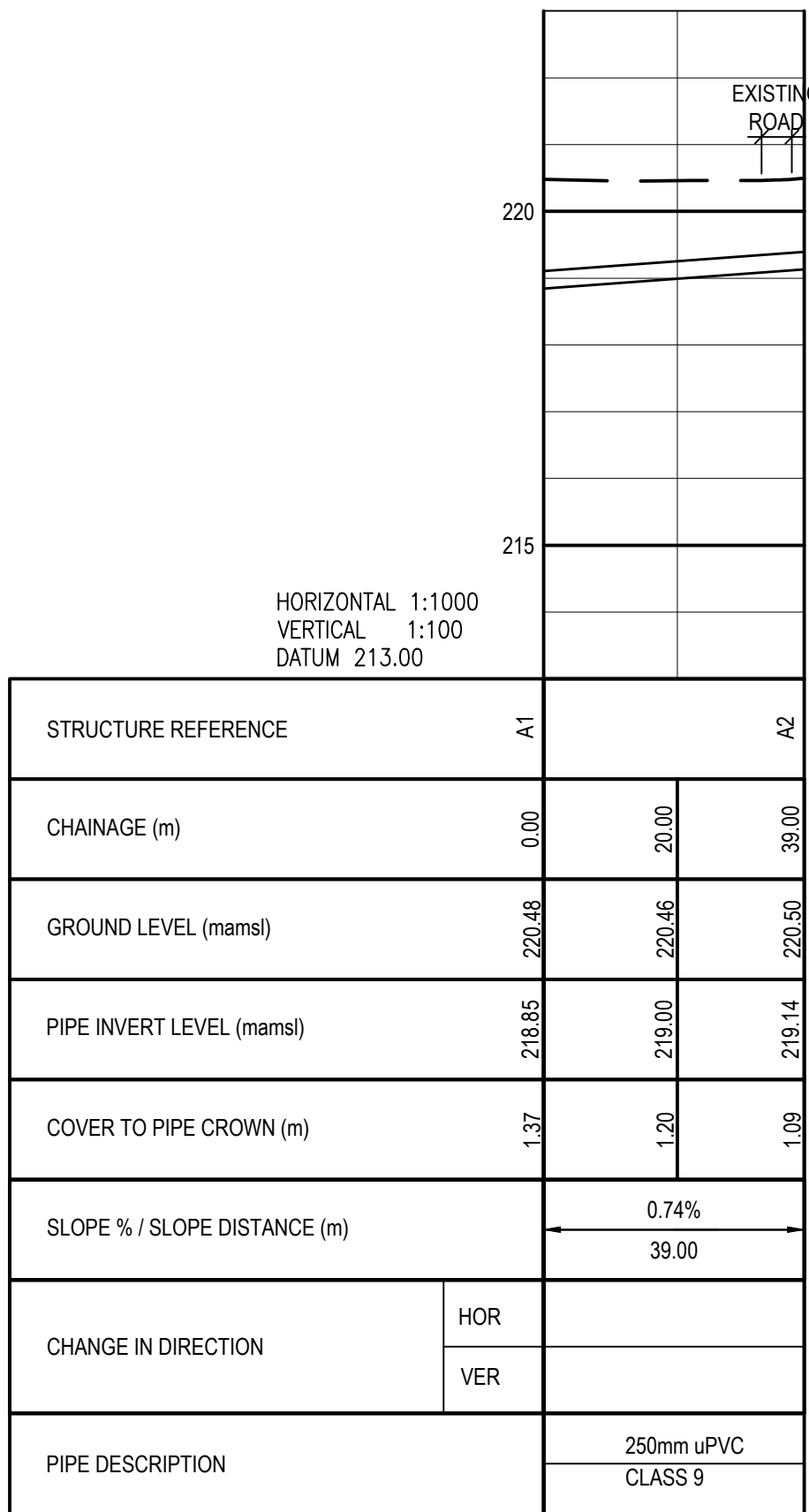
- PIPEPIPES: - 750mm MIN (VERGES); 1000mm MIN (ROADS)
- BEDDING:
  - CRADLE - 150mm.
  - BLANKET - 150mm ABOVE CROWN OF THE PIPE.

### SCHEDULE OF FITTINGS

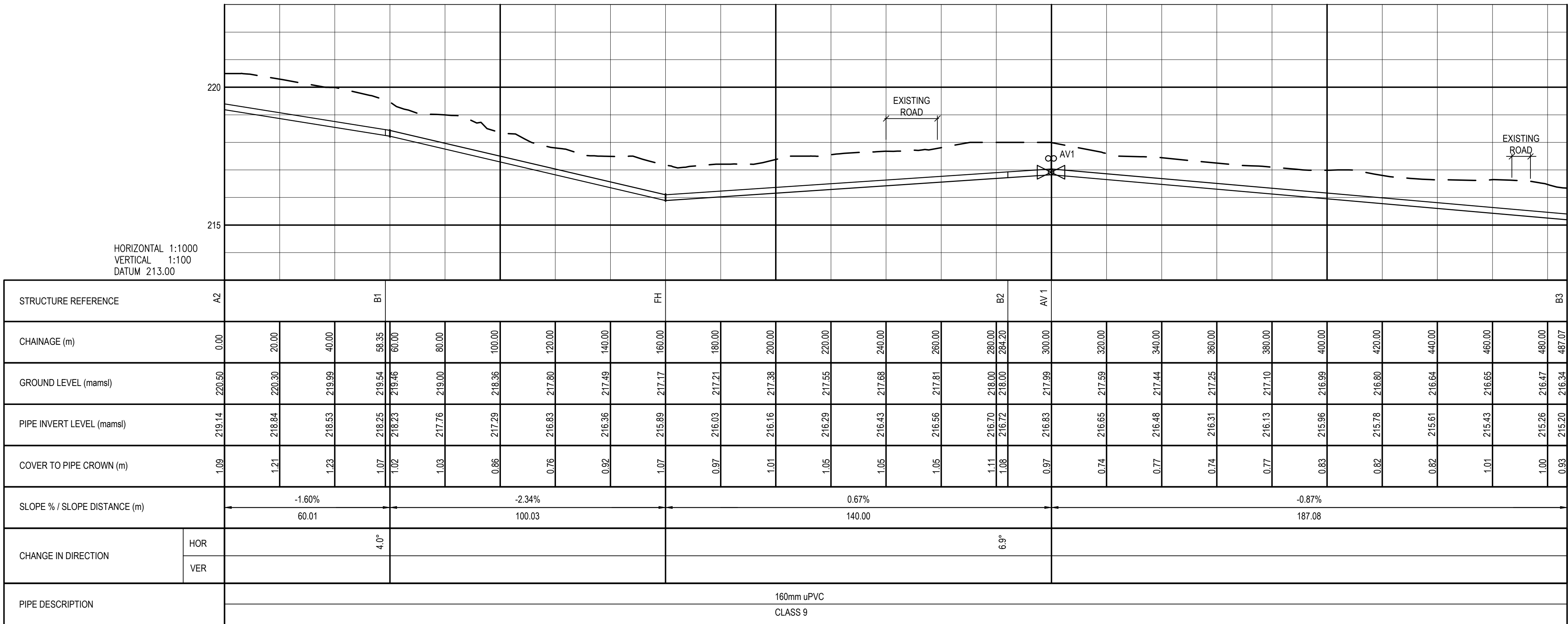


#### DRAWING REFERENCE

DRAWING No.	TITLE / DESCRIPTION
A97131-02-DRG-WR-0001	LOCALITY LAYOUT AND KEY PLAN
A97131-02-DRG-WR-0003	LAYOUT PLAN AND LONGITUDINAL SECTION (SHEET 2 OF 3)
A97131-02-DRG-WR-0004	LAYOUT PLAN AND LONGITUDINAL SECTION (SHEET 3 OF 3)
A97131-02-DRG-WR-0005 & 0006	TYPICAL WATER DETAILS



#### LONGITUDINAL SECTION - LINE A



#### LONGITUDINAL SECTION - LINE B

**ZUTARI**  
IMPACT. ENGINEERED.



DISCLAIMER  
IF CONSTRUCTION  
DRAWINGS ARE  
ISSUED UNDESIGNED,  
THE MASTER WITH  
THE ORIGINAL  
SIGNATURE OF  
APPROVAL WILL BE  
HELD AT THE  
ZUTARI OFFICE OF  
THE APPROVER

REV

A

02/10/24

PRELIMINARY DRAWING

S. NEL

APPROVED

SCALE

AS SHOWN

SIZE

A0

DRAWN

P. BENDLELA

DESIGNED

P. BENDLELA

REVIEWED

C. PUREN

PRELIMINARY  
NOT FOR CONSTRUCTION

APPROVED

DATE

Professional Technologist  
S. NEL

Pr Tech Eng  
2009/01/25

PROJECT

GILL MARCUS WTW ELEVATED WATER  
TOWER AND PIPELINE

TITLE

LAYOUT PLAN AND LONGITUDINAL SECTION  
(SHEET 1 OF 3)

DRAWING No.

PROJECT No.

WBS

TYPE

DISC

NUMBER

REV

A