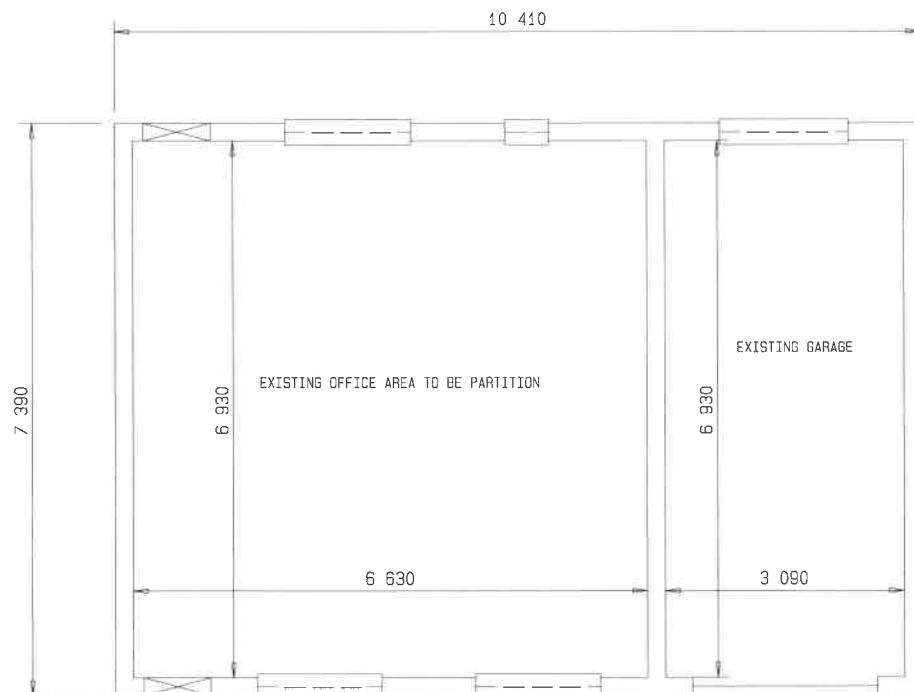
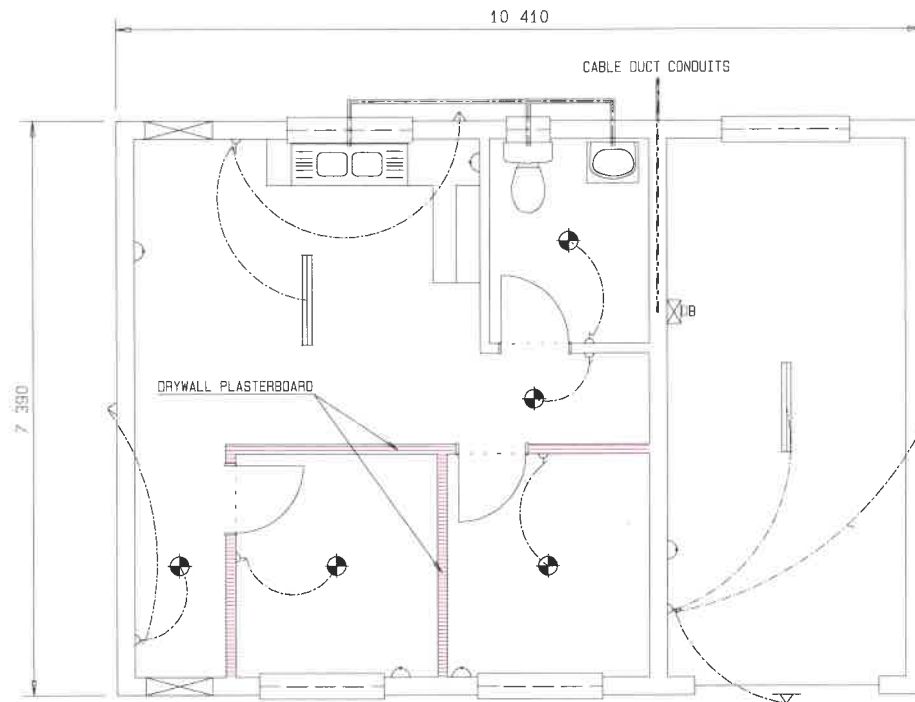


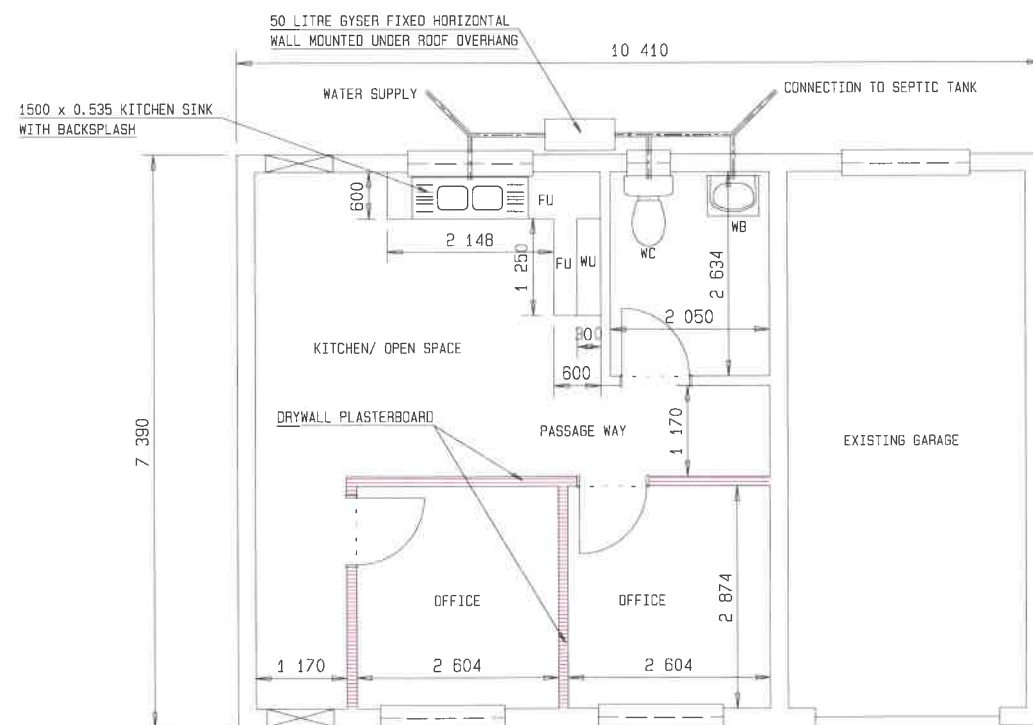
GABLE ROOF PLAN
MIDMAR WCO OFFICE INTERNAL FINISHES
SCALE: 1:50



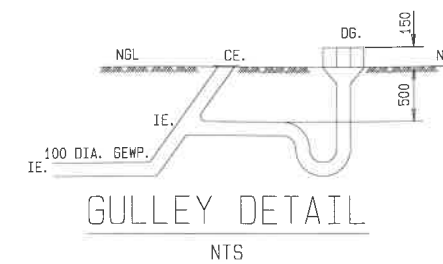
EXISTING PLAN INTERNAL FINISHES
MIDMAR WCO OFFICE INTERNAL FINISHES
SCALE: 1:50



ELECTRICAL LAYOUT DRAWING
MIDMAR WCO OFFICE INTERNAL FINISHES
SCALE: 1:50



INTERNAL FINISHES INTERNAL WALL 126 MM
MIDMAR WCO OFFICE INTERNAL FINISHES
SCALE: 1:50



ELECTRICAL SYMBOLS	
FLUORESCENT LIGHT	
ROOF LIGHT	
WALL SOCKET 350 mm ABOVE FLOOR	
ONE WAY SWITCH	
TWO WAY SWITCH	
WALL MOUNTED LIGHT	
DISTRIBUTION BOARD ABOVE LIGHT SWITCH	

NOTES:

- EXTERIOR CABLE ENTRANCE CHAMBER TO DISTRIBUTION BOARD
- NUMBER OF WIRING CIRCUITS, SPECIFICATION, POSITION OF CONDUITS AND COMPLETE RETICULATION LAYOUT SHALL BE ACCORDING TO THE ELECTRICAL ENGINEERING DESIGN.
 - ALL WORK SHALL COMPLY WITH THE ELECTRICAL BOARD OF CONTROL AND A CERTIFICATE OF COMPLIANCE SHALL BE ISSUED WITHIN SEVEN DAYS AFTER THE FINAL SUCCESSFUL COMMISSIONING OF THE ELECTRICAL INSTALLATION.
 - THE INSTALLATION OF MORE THAN ONE LUMINAIRE'S ON-OFF-SWITCH IN THE SAME POSITION SHALL BE INSTALLED AS A COMBINATION MULTI-SWITCH UNIT.
 - THIS DRAWING IS A GUIDELINE TO ELECTRICAL WORK TO BE EXECUTED. ALL WORK SHALL FINALLY BE DONE ACCORDING TO THE ELECTRICAL ENGINEER'S DESING, DRAWING AND SPECIFICATION.

NOTES:

- BUILDING SERVICES: WATER RETICULATION NOTES
- ALL WORK SHALL COMPLY TO SABS 1 200 L FOR MEDIUM PRESSURE PIPELINES. THE CONTRACTOR SHALL GUARANTEE THAT ALL INSTALLED PIPES ARE INTERNALLY CLEAN.
 - SUPPLY AND FIT BALLOSTOPS AT EACH FLUSH VALVE, CISTERN AND AT EACH TAP, HOT OR COLD WATER AT ALL SANITARY APPLIANCES.
 - MATERIAL SHALL BE HEAVY GRADE HOT DIPPED GALVANISED TO SABS 763-1977 (HEAVY GRADE) MILD STEEL PIPES TO SABS 62. ALL PIPE FITTINGS SHALL BE MANUFACTURED FROM HOT DIPPED GALVANISED TO SABS 763-1977 (HEAVY GRADE) MALLEABLE IRON TO SABS 505-1975
 - COPPER PIPES MATERIAL FOR DOMESTIC AND FIRE FIGHTING WATER RETICULATION SHALL COMPLY TO SABS 460 HARD SOLID DRAWN TUBES CLASS 0 FOR DIAMETER 15 & 22 AND CLASS 1 FOR LARGER THAN 22 DIAMETER WITH CONEX (DEZINCIFICATION RESISTENT COMPRESSION FITTINGS)

NOTES:

- BUILDING SERVICES: SEWERAGE RETICULATION NOTES
- ALL SANITARY FITTINGS SHALL BE PROVIDED WITH A WATER TRAP SEAL.
 - ALL WASTE PIPES SHALL BE FULLY ACCESSIBLE FOR CLEANING AND MAINTENANCE PURPOSES.
 - ALL SOIL PIPES ABOVE GROUND LEVEL SHALL BE PROVIDED WITH ACCESS EYES AND UNDERGROUND PIPES WITH RODDING EYES FOR CLEANING PURPOSES.
 - WASTE PIPES SHALL DISCHARGE BELOW GULLY GRID ONTO SEPTIC TANK.
 - WASTE PIPES FOR WASH HAND BASIN AND SINKS SHALL BE 40 MM DIA. PVC.
 - WASTE PIPES FOR URINALS SHALL BE 50 MM DIA. PVC AND SHALL DISCHARGE INDEPENDANTLY IN THE SYTEM.

NOTES:

- INSTALL GEYSER WITH VACUUM BREAKER ON COLD AND HOT WATER PIPES. INSTALL SAFETY VALVE WITH DRAIN PIPE TO EXTERIOR WALL.
- INSTALL UNION AND ISOLATING GLOBE VALVES ON COLD AND HOT WATER PIPES FOR FUTURE REMOVAL OF GEYSER.
- GEYSER TYPE: 50 LITER HIGH PRESSURE HORIZONTAL WALL MOUNTED UNDER ROOF OVERHANG AS SHOWN ON DRAWING.



NOTES:

- THE CONTRACTOR SHALL REQUEST THE ENGINEER TO CARRY OUT INSPECTIONS ON ALL COMPLETED WORK OR PARTIALLY COMPLETED WORK BEFORE THE WORK IS CLOSED OFF BY BUILDING IN, PLASTERED IN, PANELLING IN OR BACK FILLED.
- THE ENGINEER MAY ORDER THE OPENNING UP OF ANY CONCEALED WORK WHICH WAS NOT INSPECTED BY HIM, AT THE COST OF THE CONTRACTOR.

SCALE 1:50



REVISION			
MCD No.	DATE	DESCRIPTION	DWA
		PRELIMINARY	

DEPARTMENT OF WATER AND SANITATION	
	HEAD OFFICE DIRECTORATE: CIVIL DESIGN PRIVATE BAG X313 PRETORIA 0001
	
M. MOTEBELE DIRECTOR GENERAL	
DESIGN: X	TRACED: X/CADDIE
DRAWN: SIBONELD SIKHOSANA	CHECKED:
APPROVED	
SIGNATURE	RANK
	CHIEF ENGINEER

DEPARTMENT OF WATER AND SANITATION REPUBLIC OF SOUTH AFRICA			
MGANI WATER GOVERNMENT SCHEME OPERATIONS EASTERN: MIDMAR DAM WC OFFICE INTERNAL FINISHES			
PROVINCE: X	DISTRICT: X	KEYCODES: - - - - -	OTHER NO. X
TENDER No. -	CONTRACT No. -	SHEET 1 OF 1	REG. NO. X
CALCULATION FILE: -	DIRECTOR		