

PRIVATE SPECIFICATION

Prepared for the



SOUTH AFRICAN AIRWAYS

A STAR ALLIANCE MEMBER 

WINTER COAT, WOMEN'S, FUR COLLAR



Item Number: CL08
Document Number: SAA2008
Version 03.0/September 2015

1. Scope

This specification¹ covers the material, make and design of winter coats (with fur collar) for female personnel of the South African Airways cabin crew.

2. Definitions and Abbreviations

For the purpose of this specification the definitions given in SANS 10371 "Terms and definitions for clothing" and the following shall apply:

acceptable: acceptable to the South African Airways

nominal: subject to the tolerances normal to good manufacturing practice

SANS: South African National Standard

3. Style

The style is as follows:

- ◆ single breasted over-garment
- ◆ front panel lines
- ◆ side body panel
- ◆ centre back seam with vent
- ◆ five-button and buttonhole front fastening
- ◆ inseam pockets positioned in front side body panel seam
- ◆ shawl collar with fur-pile fabric
- ◆ belt loops sewn in back seam of side body panel
- ◆ outer material belt
- ◆ two-piece long set-in sleeves
- ◆ plain cuffs

¹ This private specification has been compiled by National Private Specifications (Pty) Ltd. privatespecs@vodamail.co.za

Doc No	Item No	Date	Version	Page	No of pages
SAA2008	CL08	September 2015	03.0	2	23

4. Illustrations

Illustrations are not to scale and are for guidance only.

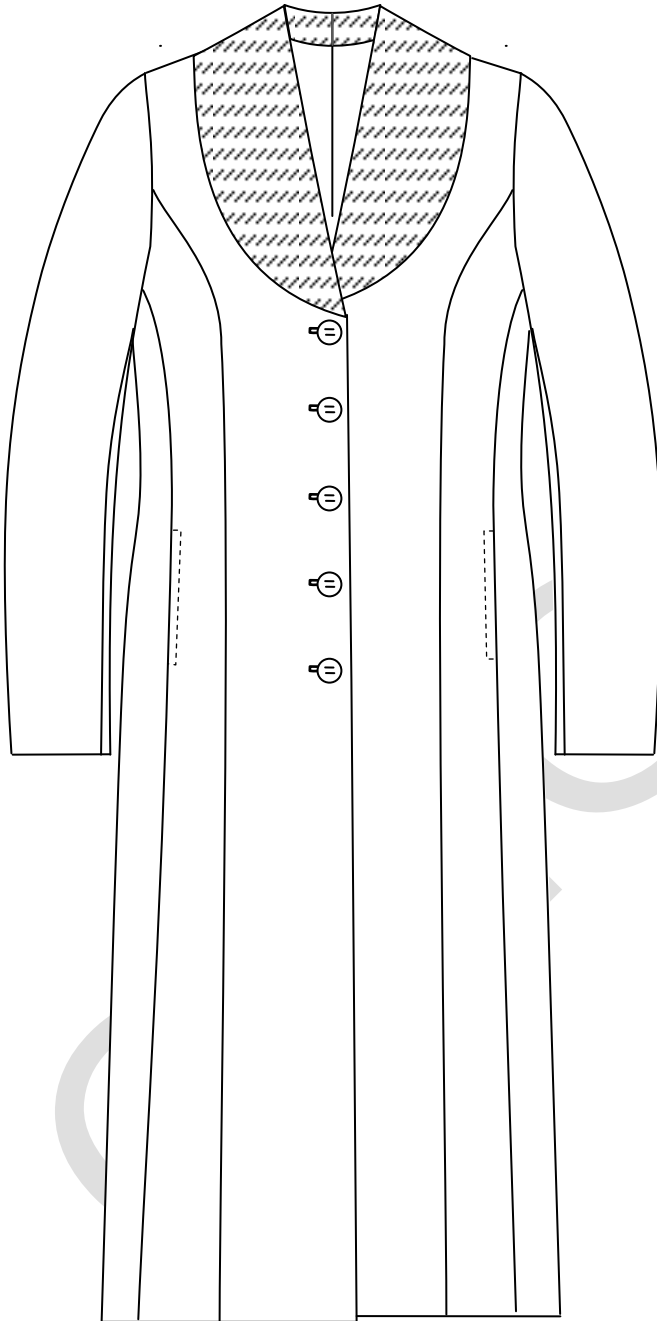


Figure 1 – Front

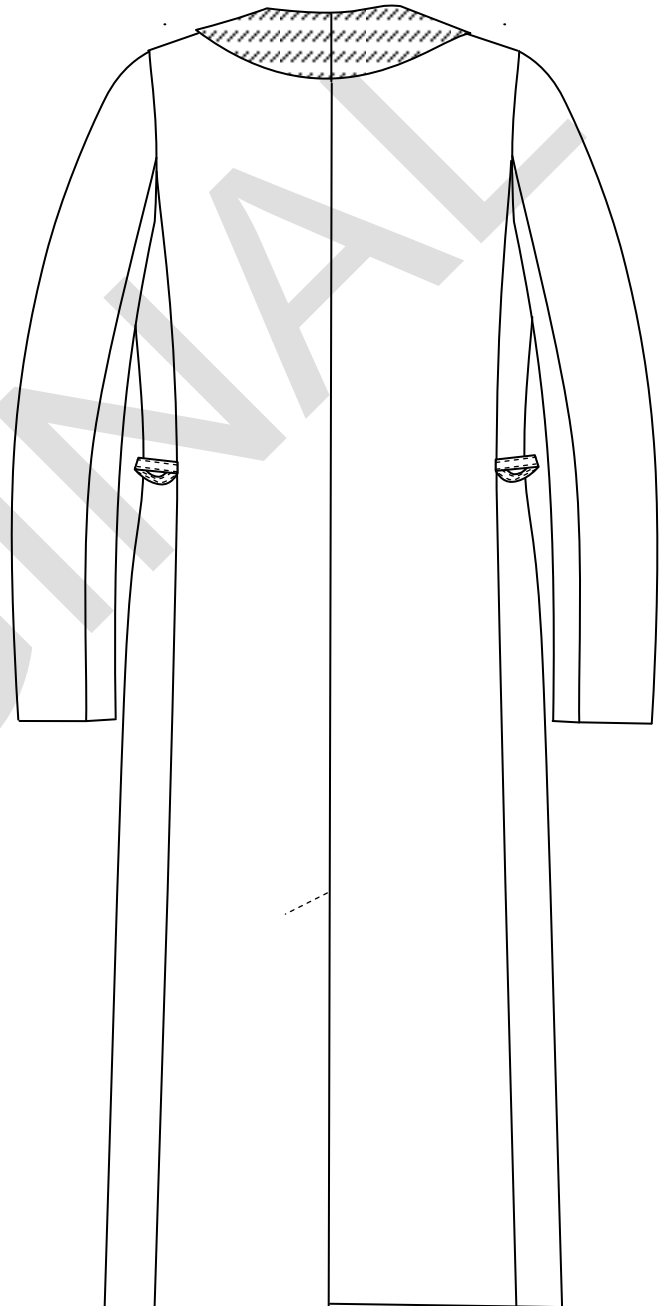


Figure 2 - Back

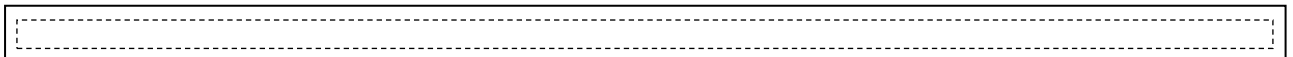


Figure 3 - Belt

Doc No	Item No	Date	Version	Page	No of pages
SAA2008	CL08	September 2015	03.0	3	23

5. Client Furnished Materials

No materials will be supplied by the South African Airways.

6. Component Materials

The following materials shall be supplied and used by the manufacturer. Trim charts shall also be submitted by the manufacturer (see Annex A).

NOTE: All components listed below shall be manufactured in the Republic of South Africa. In instances where the raw material and/or finished components are not available in the Republic of South Africa, the onus shall be on the bidder to apply for exemption certificates from DTI. Exemption certificates, where relevant, shall be submitted together with each bid.

6.1 Outer material

- ◆ to comply with the requirements as given in table 1
- ◆ colour shall be a match, in terms of SANS 10076-5, “The assessment of defects in textile piece-goods and made-up articles- Part 5: Defects in woven woollen and worsted piece-goods” to CKS 129 Colour No. 632c-2014 “SAA Melton”
- ◆ to be treated with a fabric protector (water-repellent, oil-and-soil repellent, breathable, washable and dry-cleanable)
 - Ruco-guard² is a typical example of a suitable product
 - manufacturer to submit a certificate of the relevant product used
- ◆ **Mothproofing:**
When tested in accordance with WTC TM 27 after exposure to dry cleaning and light in accordance with WTC TM 28, the efficacy of the mothproofing treatment and the durability of the mothproofing treatment after washing and light exposure shall comply with the requirements for South Africa (i.e. Level 3) given in Woolmark specification CP-4, “Products for the insect resist treatment of wool products.”
- ◆ **Freedom from defects:**
The assessment and stringing of defects, and the deductions to be made for strung and unstrung defects, shall be in accordance with SANS 10076-5, and shall be based on the following LAQs:
 - for pieces: 10
 - for a lot: 8

6.2 Fur-pile fabric

- ◆ an acceptable fur-pile fabric
- ◆ **quality to be as agreed upon between the South African Airways and the supplier**
- ◆ average pile length to be 10 mm
- ◆ capable of withstanding the same washing and drying requirements as specified for the outer material
- ◆ colour to be an acceptable match to colour No. 636c-2014c “SAA Navy Fur” of CKS 129 “Colours for textiles”

² Ruco-Guard® is the trade name of a product supplied by the Rudolf Group™. This information is given for the convenience of users of this private specification and does not constitute an endorsement by the South African Airways of the product named. Equivalent products may be used if they can be shown to lead to the same results.

Doc No	Item No	Date	Version	Page	No of pages
SAA2008	CL08	September 2015	03.0	4	23

Table 1 – Outer material requirements

1	2	3
Property	Requirement	SANS number (unless otherwise indicated)
Composition, %		1833-1 and 1833-4
Wool	92 ± 3	
Nylon	8 ± 3	
Usable width, cm, range	148	81
Weave	See figure A	Visual examination and physical analysis
Number of threads per centimetre^a, min.		7211-2
Warp	16,0	
Weft	8,5	
Mass per area (free from non-fibrous material), g/m ² , min.	320	79
Breaking strength, N, min.		13934-1
Warp	300	
Weft.....	180	
Resistance to pilling^b, rating, min.	3 – 4 (slight to moderate)	6116
Dimensional changes, %, max.		
Dry cleaning		ISO 3175-2
Warp and weft direction	-2	
Colour fastness to:		
Dry cleaning, rating, min.		105-D01
Change in colour	4	
Staining of solvent	4	
Perspiration, rating, min.		105-E04
Change in colour	4	
Staining of solvent	4	
Rubbing, rating, min.		105-X12
Dry	4 – 5	
Wet	4	
Light, rating, min.	5 – 6	105-B02
^a Recommended yarn linear densities, Warp: 2/24nm; Weft: 1/07nm. ^b Tested after dry cleaning in accordance with SANS 6026:2005, procedure B.		

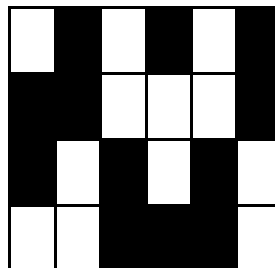


Figure A – Weave diagram of outer material

Doc No	Item No	Date	Version	Page	No of pages
SAA2008	CL08	September 2015	03.0	5	23

6.3 Lining

6.3.1 General

- ◆ lining shall be treated with an anti-static finish
- ◆ colour to be an acceptable match to the outer material
- ◆ to comply with one of the types as given 6.3.2 and 6.3.3 (both types will be regarded as acceptable)

6.3.2 Type 1 lining

- ◆ to comply with the requirements for type L61P of SANS 1387-7 “Woven cotton and similar apparel fabrics – Part 7: Jacket linings”

6.3.3 Type 2 lining

- ◆ to comply with the same requirements as specified for Type 1, but with the following deviations:
 - weave: to be a mock-leno weave
 - air permeability: to have a minimum requirement of 130 cfm³ at 12.5 mm (0.5 in) water pressure when tested in accordance with ASTM D737-96 “Standard Test method for air permeability of textile fabric”

6.4 Interlining

- ◆ fusible woven or non-woven interlining
- ◆ complies with the requirements of CKS 627 “Fusible interlinings”
- ◆ suitable for use in garments which may be dry-cleaned
 - capable of withstanding the same washing and drying procedures as specified for the outer material

The selection of interlining of appropriate mass per unit area to be determined by consultation with the supplier of the interlining.

6.5 Shoulder pads

- ◆ flexible polyester wadding shoulder pad (used for tailored garments)
- ◆ medium height
- ◆ resistant to dry-cleaning and steam pressing

6.6 Sleeve-head roll

- ◆ acceptable wadding (glazed on both sides)
- ◆ suitable to give the desired shape at the sleeve head
- ◆ to conform to the needs of the pattern

6.7 Buttons

- ◆ four-hole plastics
- ◆ nominal diameter of 25 mm
- ◆ to comply with the requirements of SANS 1457 “Plastics buttons”
- ◆ dope-dyed and fully impregnated
- ◆ colour to be an acceptable match to the colour of the outer material

³ cfm = cubic feet of air per minute per square foot of fabric (ft³/min/ft²)

Doc No	Item No	Date	Version	Page	No of pages
SAA2008	CL08	September 2015	03.0	6	23

6.8 Threads

- ◆ to comply with relevant requirements of SANS 1362 "Sewing threads"
- ◆ colour to be an acceptable match to the colour of the outer material
- ◆ polyester-and-cotton core-spun
- ◆ ticket No 80

7. Workmanship

The coats shall be:

- ◆ cut and made with first-class workmanship throughout
- ◆ of uniform and acceptable make, colour and finish

Shall be free from:

- ◆ defects, that affect their appearance or may affect their serviceability (or both)
- ◆ marks
- ◆ spots
- ◆ stains, incurred in the making-up

Seams and stitches shall be:

- ◆ smooth and uniform
- ◆ free from twists, pleats and puckers
- ◆ sufficiently extensible to avoid seam cracking and undue shrinkage in use

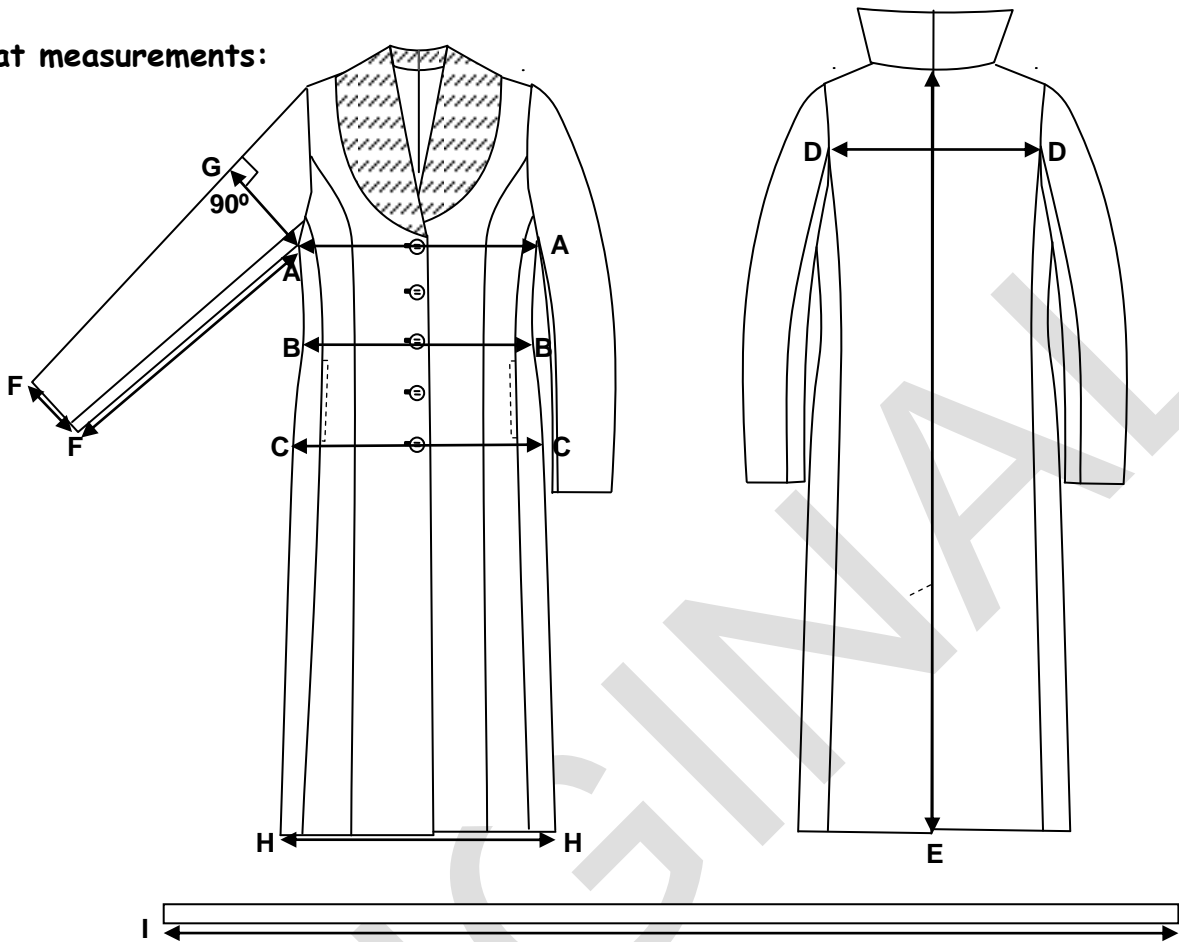
Ends of sewing shall be:

- ◆ trimmed and loose threads removed
- ◆ back-tacked if unsecured

Doc No	Item No	Date	Version	Page	No of pages
SAA2008	CL08	September 2015	03.0	7	23

8. Sizes

Coat measurements:



MEASURING POINT		DESCRIPTION
A – A	Bust circumference	Measure at the base of the scye, across the width of the garment, with the buttons and buttonholes fastened, garment spread completely flat, and multiply by two.
B – B	Waist circumference	Measure across the width of the coat at the narrowest part of the body (natural waist) and multiply by two.
E – E	Back length	Measure from the centre back neck seam to the bottom edge of the coat.
D – D	Back width	Measure across the width of the back, at the hind-arm sleeve pitch level from one sleeve insertion seam to the other.
A – F	Sleeve length	Measure the length from the base of the scye to the outer edge of the cuff.
A – G	Bicep circumference	Measure across the sleeve from the base of the scye to the overarm at a 90° angle, and multiply by two.
F – F	Cuff circumference	Measure across the width of the cuff, and multiply by two.
C – C	Hip circumference	Measure across the width of the coat at hip level at the base of the pocket mouth opening, and multiply by two.
H – H	Bottom hem circumference	Measure across the bottom hem, with the buttons fastened, and multiply by two.
I – I	Belt length	Measure in a straight line, form the one end to the other.

Doc No	Item No	Date	Version	Page	No of pages
SAA2008	CL08	September 2015	03.0	8	23

Table 2 - Size range

1	2	3	4	5	6	7	8	9	10	11
Size designation ¹	Nominal finished garment measurements, cm									
	Circumference			Back length	Back width	Sleeve length	Bicep	Circumference		Belt length
	Bust	Waist	Hips					Cuff	Bottom hem	
28	99	92	104	129.2	40.5	44	35.4	24.9	122	160
30	101.5	94.5	106.5	129.8	41	44	36.4	25.2	124.5	162.5
32	104	97	109	130.4	41.5	44	37.4	25.5	127	165
34	109	102	114	131	42.5	44	39	26	132	170
36	114	107	119	131.6	43.5	44	40.6	26.5	137	175
38	119	112	124	132.2	44.5	44	42.2	27	142	180
40	124	117	129	132.8	45.5	44	43.8	27.5	147	185
42	129	122	134	133.4	46.5	44	45.4	28	152	190
44	134	128	140	134	47.5	44	47	28.5	158	195
46	139	134	146	136.6	48.5	44	48.6	29	164	200
48	144	140	152	135.2	49.5	44	50.2	29.5	170	205
50	149	146	158	135.8	50.5	44	51.8	30	176	210
52	154	152	164	136.4	51.5	44	53.4	30.5	182	215
1) Based on the bust circumference in inches of the intended wearer.										

Doc No	Item No	Date	Version	Page	No of pages
SAA2008	CL08	September 2015	03.0	9	23

9. Make

Illustrations are not to scale and are for guidance only, and unless inconsistent with the text, all measurements are nominal.

9.1 Foreparts

Each forepart shall:

- ◆ consist of three panels
 - front panel
 - centre panel
 - side body panel that shall extend towards the back
- ◆ the seam joining the front and centre panel shall extend from the midpoint of the scye, over the bust prominence, to the hem
- ◆ have a facing
- ◆ have a shoulder dart
- ◆ have an inseam side pocket positioned in the front edge of the side body panel seams
- ◆ be cut with an integrated shawl collar
 - lapel (collar) to be fitted with fur-pile fabric
 - lapel to be of finished width 12 cm (measured at widest point from the breakline of the lapel to the outer edge)
 - stayed at the breakline with a 25 mm bridle-stay
 - have rounded bottom corners
- ◆ be fully lined

Left front shall:

- ◆ have five buttons

Right front shall:

- ◆ have five buttonholes

Doc No	Item No	Date	Version	Page	No of pages
SAA2008	CL08	September 2015	03.0	10	23

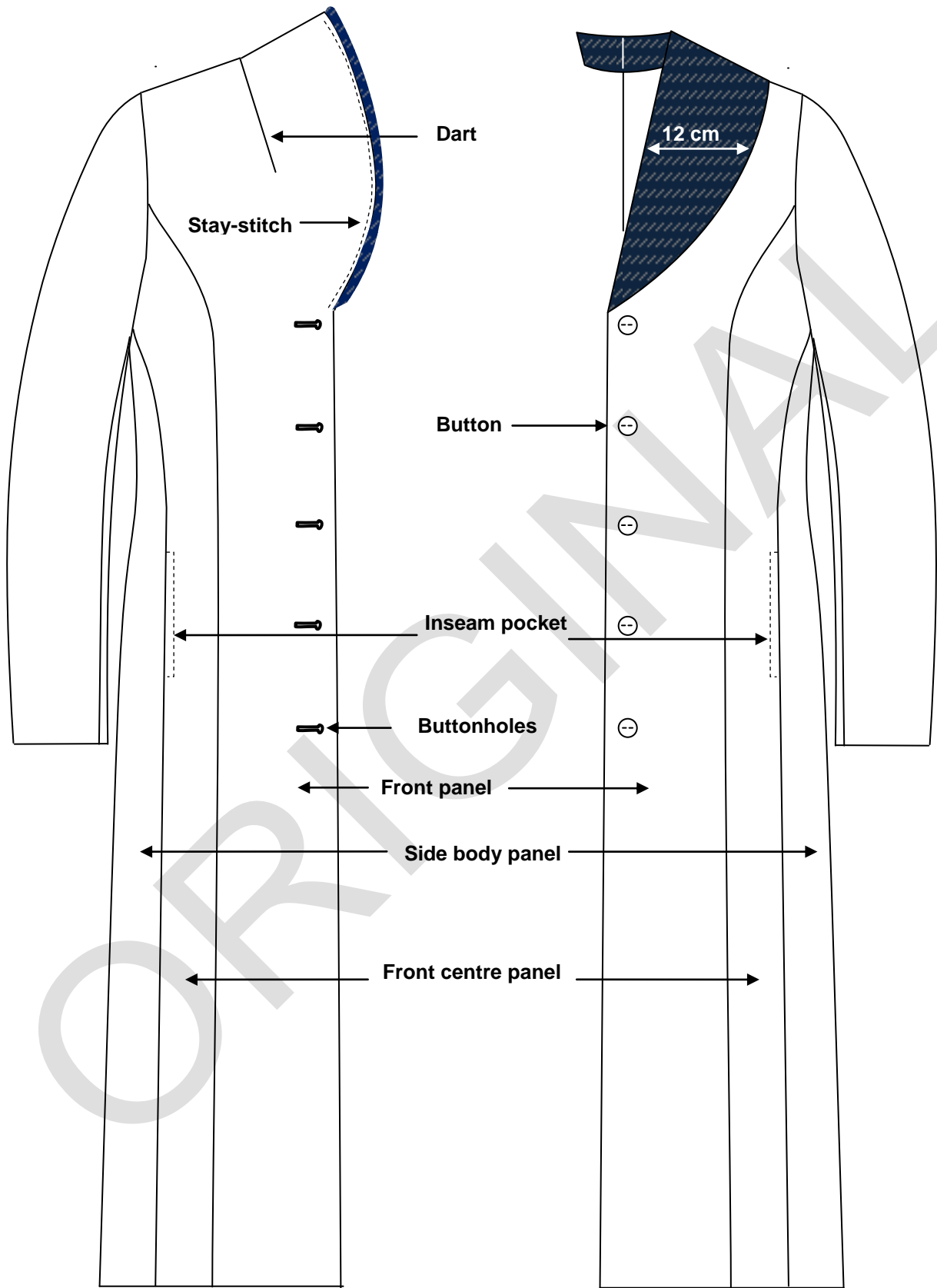


Figure 4 - Fronts

Doc No	Item No	Date	Version	Page	No of pages
SAA2008	CL08	September 2015	03.0	11	23

9.2 Back

Back shall:

- ◆ consist of two back panels, joined by a centre back seam and two side body panels
 - side body panels to extend from the forepart to the back
- ◆ a vent in the centre back seam
 - interlined with interlining
 - finished length 35 cm on all sizes
 - finished width 65 mm
 - laps left over right
 - tacked along the full width at the top edge of the vent with a slanted stitching
 - raw edge of right underlapping panel to be sewn to the lining and stay-stitched
 - edge of left overlapping panel to have a 65 mm grow-on facing, folded to inside and sewn to the lining
- ◆ fitted with belt loops (see 9.8)
- ◆ fully lined

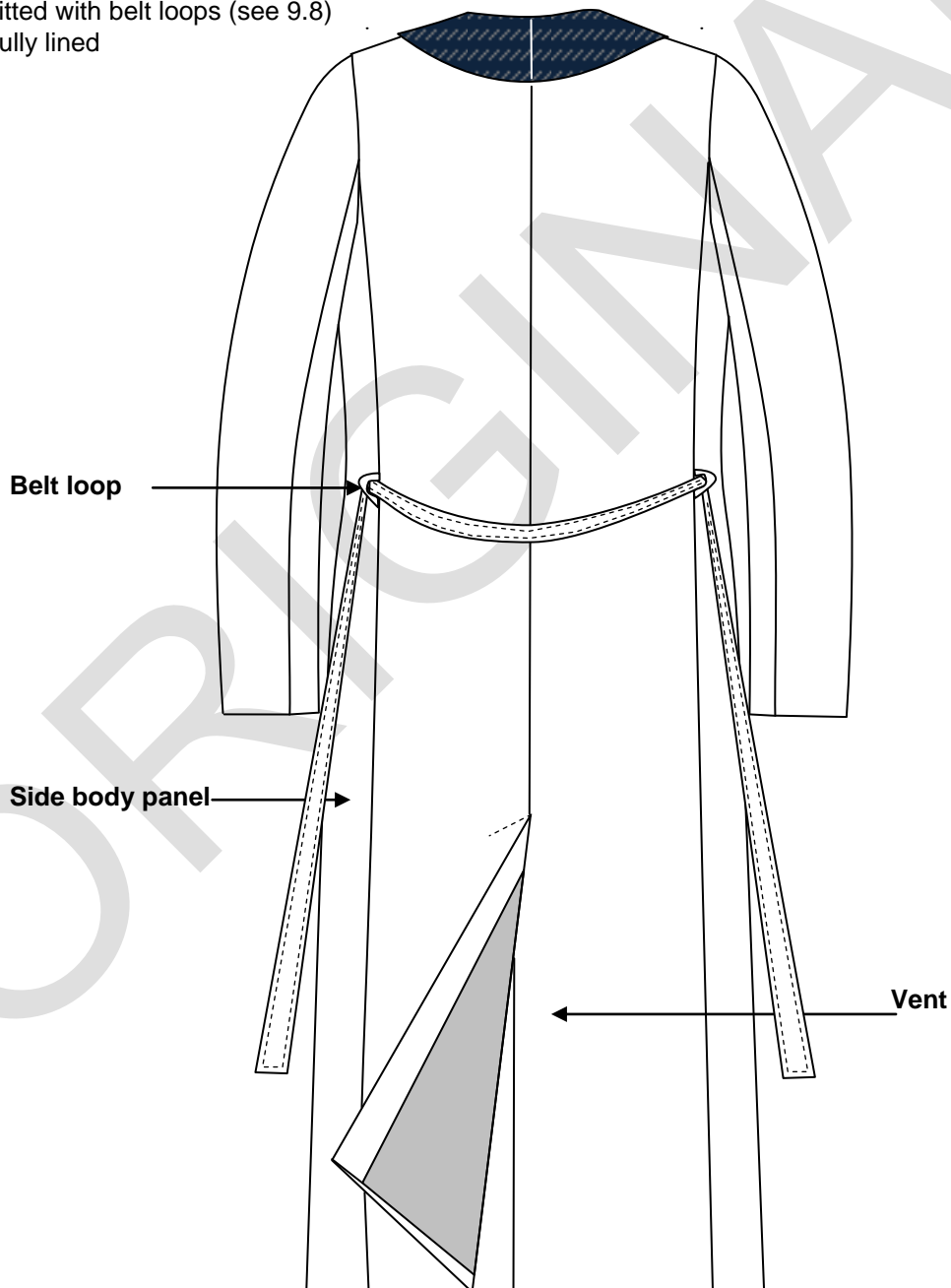


Figure 5 - Back

Doc No	Item No	Date	Version	Page	No of pages
SAA2008	CL08	September 2015	03.0	12	23

9.3 Collar and facings

Collar:

- ◆ top collar and front facings to be seamed together
- ◆ to be of fur-pile fabric (top collar)
- ◆ to have a centre back seam (fur-pile to be tufted in such a way that the seam will be concealed)
- ◆ to be a shawl collar
- ◆ to be of finished width 90 cm (measured at centre back)

Facings:

- ◆ to be of outer material
- ◆ to be cut separately
- ◆ seamed to the fur-pile top collar along the top edge of the facing
- ◆ to conform to the shape of the front of the coat
- ◆ sewn to the front edges of the cut-on lapels
- ◆ seamed at the centre back
- ◆ of finished width 85 mm (measured at the buttonholes and bottom hem)
- ◆ sewn to the lining
- ◆ stay-stitched

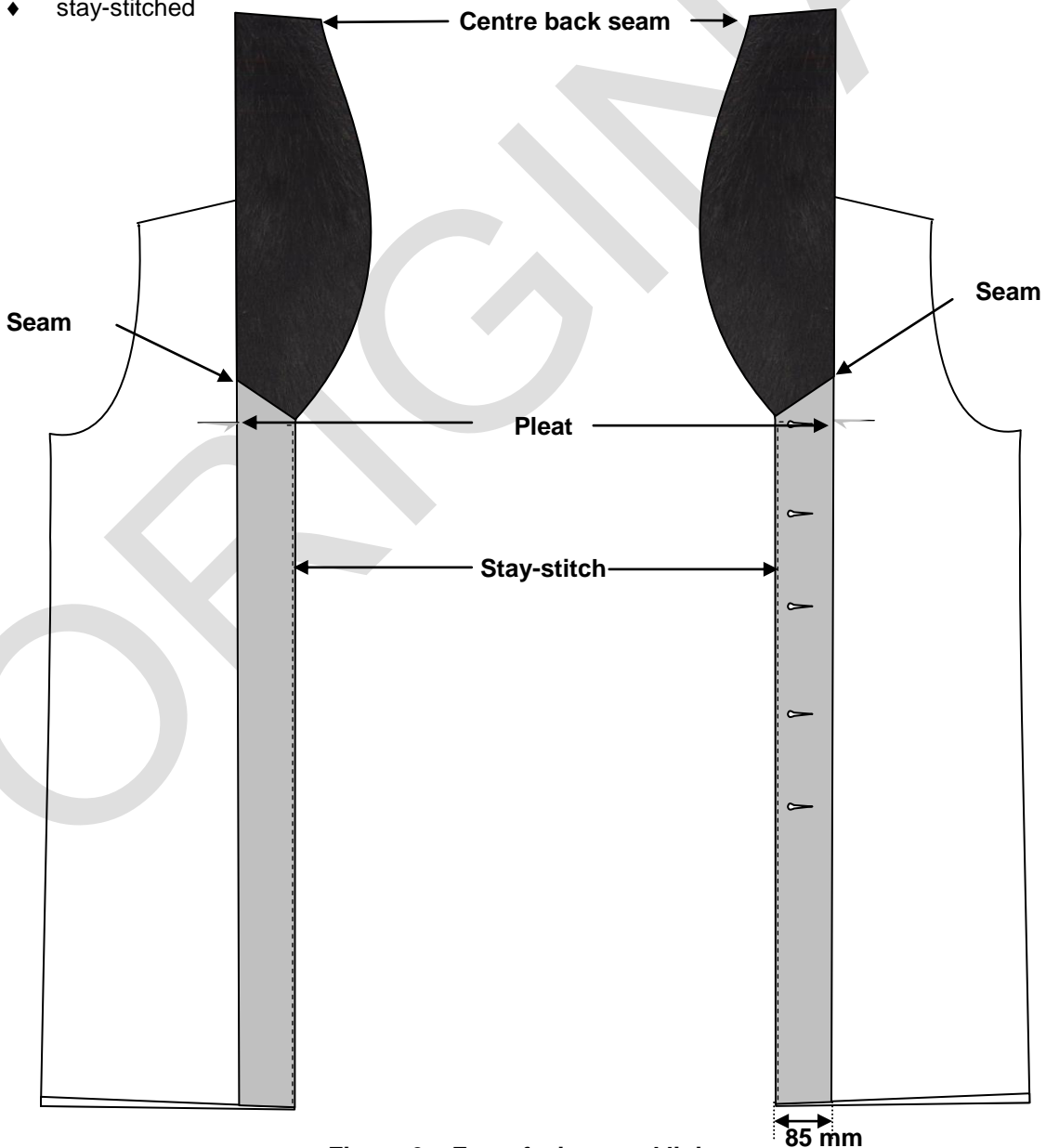


Figure 6 – Front facings and lining

Doc No	Item No	Date	Version	Page	No of pages
SAA2008	CL08	September 2015	03.0	13	23

9.4 Lining

Lining to:

- ◆ be cut and made in such a way that it conforms to the shape of the coat
- ◆ have a pleat at the centre back seam
 - of depth 25 mm
 - to extend from the neck to the waist
- ◆ have a pleat at the bust area (see figure 6)
 - of depth 10 mm
- ◆ be sewn to the facings, bottom hem and sleeve cuffs
- ◆ to have a pleat along the bottom hem of the jacket and cuff

Facing-to-lining seams:

- ◆ to be smooth
- ◆ be without undue fullness

9.5 Armholes

Armholes shall:

- ◆ be interlined with interlining at the front armhole section of the front side panel
- ◆ be stayed with a 10 mm wide strip of an acceptable tape around the armhole

9.6 Sleeves

Sleeves shall:

- ◆ be two-piece set-in type
- ◆ have plain cuffs
 - interlined with a 80 mm wide strip of a fusible interlining
- ◆ be fitted with a sleeve head roll and a shoulder pad
- ◆ fully lined

9.7 Side pockets

Each coat shall have:

- ◆ two side inseam pockets

Each pocket to:

- ◆ be positioned in the front edge of each side body panel
- ◆ have a pocket mouth of finished length 16 cm
- ◆ be cut in such a way that the front edge of the side body panel is cut with a step to form a grown-on bearer of finished width 35 mm
 - bearer-to-pocket bag seam to be edge-stitched 2 mm
- ◆ be such that the seam allowance of the rear edge of the centre panel is folded to the inside and sewn to the lining, forming the pocket mouth opening
 - mouth opening to be edge-stitched 10 mm
 - facing-to-pocket bag seam to be edge-stitched 2 mm
- ◆ top edge of each pocket mouth shall be positioned approximately 40 mm below the belt loops
- ◆ have pocket bags of lining
 - of finished depth 20 cm (measured from the bottom edge of the mouth opening)

Doc No	Item No	Date	Version	Page	No of pages
SAA2008	CL08	September 2015	03.0	14	23

- of minimum finished width 16 cm (measured from the bottom edge of the mouth opening)
- pocket bag not to interfere with the front buttons/buttonholes

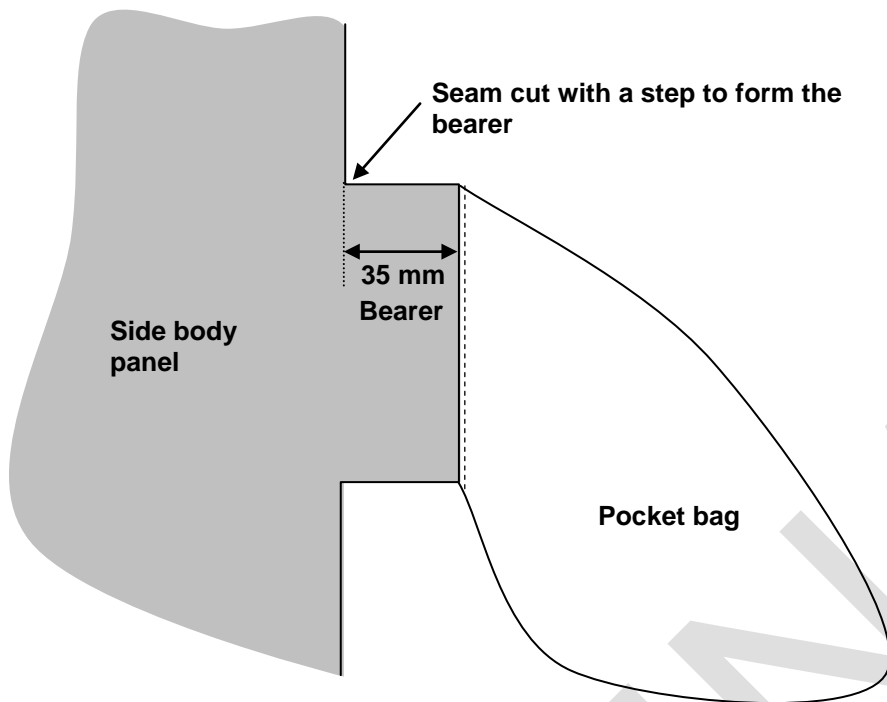


Figure 7 – Bearer of inseam pocket (depicting right pocket)

9.8 Belt loops

The belt loops shall:

- ◆ be two in total
- ◆ be of doubled outer material and edge-stitched 2 mm
- ◆ be sewn in with the rear edge of the side body panel
- ◆ be positioned at the natural waist position
- ◆ of finished width 10 mm
- ◆ of finished length 65 mm, after being folded double and sewn into the seam

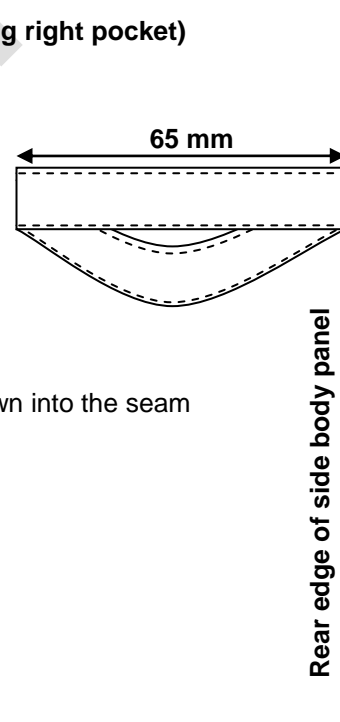


Figure 8 – Belt loop

9.9 Belt

The belt shall:

- ◆ be of doubled outer material
- ◆ be a continuous length of outer material
- ◆ be threaded through the belt loops
- ◆ have boxed square outer edges
- ◆ be of finished width 50 mm
- ◆ edge-stitched 7 mm along the outer edges
- ◆ finished length to comply with the dimensions as given in table 2

Doc No	Item No	Date	Version	Page	No of pages
SAA2008	CL08	September 2015	03.0	15	23

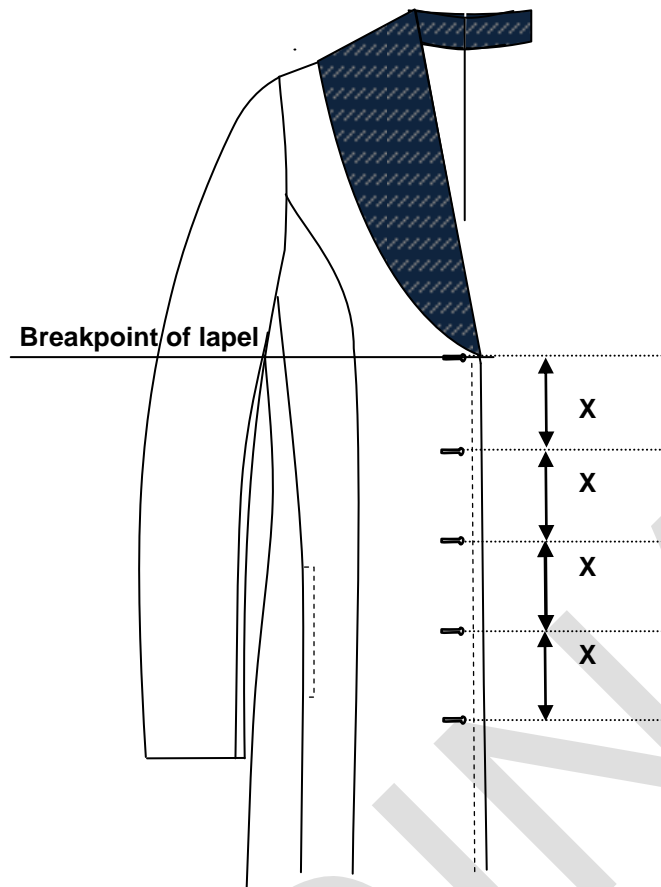


Figure 9 – Positioning of buttons

9.10 Buttonholes

The buttonholes shall be:

- ◆ neatly made
- ◆ jacket type
- ◆ gimped and barred
- ◆ positioned on the right front
- ◆ 5 in total
- ◆ horizontal
- ◆ of such length that it shall neatly accommodate buttons of diameter 25 mm
- ◆ positioned 15 mm from the front edge
- ◆ positioned with the first (top) buttonhole at the breakpoint of the lapel and at bust level
- ◆ remaining buttonholes to be equidistantly spaced, at 12 cm intervals

9.11 Buttons

The buttons shall be:

- ◆ properly secured
- ◆ 6 in total
- ◆ 5 to be positioned on the left front in corresponding positions to the buttonholes in the right front
- ◆ 1 spare button to be positioned in an appropriate plastics envelope and attached to the swing ticket

9.12 Hems

The bottom hem of the coat to be:

- ◆ of finished width 40 mm

Doc No	Item No	Date	Version	Page	No of pages
SAA2008	CL08	September 2015	03.0	16	23

- ◆ interlined with an acceptable fusible interlining
- ◆ sewn to the lining (lining to have pleat)

Hem of the sleeves to be:

- ◆ of finished width 40 mm and sewn to the lining (lining to have a pleat)

10. Stitches, Seams and Stitchings

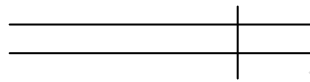
10.1 Stitches

Mains seaming: single needle lock stitch

10.2 Seams

Seams to be at least 10 mm wide (unless otherwise stated):

Main seams: seam type SSa-1



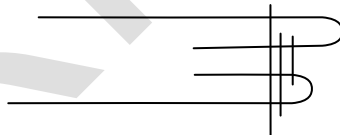
Superimpose two or more plies of material and seam with the appropriate number of rows of stitches positioned at the specified distance(s) from the aligned edges.

Front edges of coat and edges of collar: seam type SSae-2



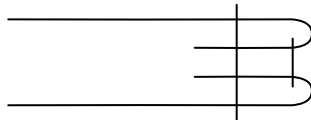
Form seam Type SSa-1, using two plies of material. Then turn back each ply at the seam, stay-stitch the one layer, ensuring that when more than one row of stitches is used, one row passes through the folded edges.

Pocket mouth opening: seam type SSae-3



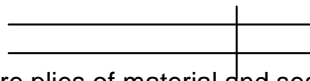
Form seam Type SSa-1, using two plies of material. Then turn back each ply at the seam, stay-stitch the one layer, ensuring that when more than one row of stitches is used, one row passes through the folded edges. Stitch one row of stitches through all thickness.

Outer edges of belt: Seam type SSe-2



Form seam Type SSa-1, using two plies of material. Then turn back each ply at the seam and seam through the turned edges with the appropriate number of rows of stitches.

Other seams: seam type SSa



Superimpose two or more plies of material and seam with the appropriate number of rows of stitches positioned at the specified distance(s) from the aligned edges.

Doc No	Item No	Date	Version	Page	No of pages
SAA2008	CL08	September 2015	03.0	17	23

10.3 Number of stitches

The determination of sewing stitches per unit length: use SANS 5278 "Sewing stitches per unit length"

Seaming and top-stitching: 40 ± 4 per 10 cm

buttons: 10-12 per button

buttonholes: 12 ± 1 per 1 cm

11. Garment labels

NOTE: Tender samples shall be fitted with a printed label displaying the manufacturer's name or trade mark and size

11.1 Label identification

Each garment shall be fitted with the labels as given in table 3:

Table 3 – Label identification

	Type	Requirements
1.	a woven logo jacquard label	See 11.2
2.	a woven jacquard size label	See 11.3
3.	a garment specific printed woven fabric label*	See 11.4
4.	a care-label*	See 11.5
5.	a paperboard swing tag	See 11.6

*These two labels may be separate labels or a single loop label.

11.2 Jacquard logo label

Each label shall:

- ◆ be a woven jacquard label
- ◆ edges to be properly finished to prevent fraying
- ◆ information to be in legible and indelible block letters of height at least 3 mm
- ◆ permanently secured and sewn to the lining at centre back on the inside
- ◆ be such that it shall outlast the garment
- ◆ include the following information:
 - the manufacturer's name or trade mark or both
 - the registered full-colour SAA logo at top of label (see figure below)



Doc No	Item No	Date	Version	Page	No of pages
SAA2008	CL08	September 2015	03.0	18	23

11.3 Jacquard size label

Each label shall:

- ◆ be a woven jacquard loop label
- ◆ edges to be properly finished to prevent fraying
- ◆ information to be in legible and indelible block letters of height at least 3 mm
- ◆ sewn together with the side edge of the jacquard logo label
- ◆ be such that it shall outlast the garment

11.4 Printed garment labels

Each label shall:

- ◆ be white woven rayon label that is printed
- ◆ comply with SANS 1309 "Printed labels for textiles"
 - information to be in legible and indelible block letters of height at least 3 mm
- ◆ permanently secured and sewn to the back facing
- ◆ be such that they outlast the garments (including the markings)
- ◆ include the following information:
 - the item number
 - order number
 - the year and month of manufacture
 - the VAT no of the contractor
 - the country of origin, i.e. "Made in the RSA"

11.5 Printed care-labelling

Each label shall:

- ◆ be white woven rayon label that is printed
- ◆ comply with SANS 1309 "Printed labels for textiles"
 - information to be in legible and indelible block letters of height at least 3 mm
- ◆ permanently secured to the side seam
- ◆ be such that they outlast the garments (including the markings)
- ◆ to provide appropriate care instructions (in accordance with SANS 10011 "Care-labelling of textile piece-goods, textile articles and clothing") in words and symbols
- ◆ provide the fibre composition of the fabric in accordance with the requirements of SANS 10235 "Fibre content labelling of textiles and textile products"

11.6 Printed swing tags

Each swing tag shall:

- ◆ be a white cardboard printed label
- ◆ information to be in legible and indelible block letters of height at least 3 mm
- ◆ include the following information:
 - the size designation
 - the item number
 - the item description
 - the month and year of manufacture
 - the order number

Doc No	Item No	Date	Version	Page	No of pages
SAA2008	CL08	September 2015	03.0	19	23

12. Packaging and marking of packaging

12.1 Packing

12.1.1 The coats shall be:

- ◆ delivered in a pressed and commercially dry condition
- ◆ so packed that they will not be damaged in transit or in storage
- ◆ individually placed on a hanger and packed in a plastics envelope of suitable size and shape
- ◆ unless otherwise specified in the order or contract, acceptably packed for transportation in bulk containers

12.1.2 Coats:

- ◆ of the same size designation to be packed together in a bulk container (unless quantities ordered are such that packing together of the same size only is not justified)
- ◆ of different size designations may also be packed together to accommodate the last part of an order or contract

12.2 Marking

12.2.1 Plastics envelopes

Each envelope to be clearly marked with the following information:

- ◆ the item number
- ◆ the item description
- ◆ size designation
- ◆ the order number
- ◆ month and year of manufacture

12.2.2 Bulk containers

Each bulk container shall have a label securely attached to the outside. This label shall be visible when the containers are stacked and shall provide the information in legible and indelible markings as follows:

- ◆ the manufacturer's name or trade mark or both
- ◆ the order number or contract number
- ◆ the item description
- ◆ the item number
- ◆ the size designation
- ◆ the quantity of the item
- ◆ the **month and year** of manufacture
- ◆ the order number
- ◆ the box number, e.g. "1 of 5"
- ◆ the total mass of the packed container
- ◆ the Inspection Certificate Number

12.3 Additional marking

When so required by the South African Airways, coats, plastics envelopes or containers (or any combination of these) to bear information additional to that specified above.

Doc No	Item No	Date	Version	Page	No of pages
SAA2008	CL08	September 2015	03.0	20	23

13. Normative References

The following documents contain provisions which, through reference in this text, constitute provisions of this specification. All documents are subject to revision and, since any reference to a document is deemed to be a reference to the latest edition of that document, parties to agreements based on this specification are encouraged to take steps to ensure the use of the most recent editions of the documents indicated below. Information on currently valid national, international and CKS documents may be obtained from the South African Bureau of Standards⁴.

CKS 627, *Fusible interlinings.*

ISO 3175-2, *Textiles - Professional care, drycleaning and wetcleaning of fabrics and garments -- Part 2: Procedure for testing performance when cleaning and finishing using tetrachloroethene.*

SANS 79, *Textiles – Mass per unit area of conditioned fabrics.*

SANS 81, *Width of a textile fabric sample.*

SANS 105-B02/ISO 105-B02, *Textiles – Tests for colour fastness – Part B02: Colour fastness to artificial light: Xenon arc fading lamp.*

SANS 105-D01, *Textiles - Tests for colour fastness Part D01: Colour fastness to dry cleaning.*

SANS 105-E04/ISO 105-E04, *Textiles – Tests for colour fastness – Part E04: Colour fastness to perspiration.*

SANS 105-X12, *Textiles - Tests for colour fastness Part X12: Colour fastness to rubbing.*

SANS 1309, *Printed labels for textiles.*

SANS 1362, *Sewing threads.*

SANS 1387-7, *Woven cotton and similar apparel fabrics – Part 7: Jacket linings.*

SANS 1457, *Plastics buttons.*

SANS 1833-1, *Textiles - Quantitative chemical analysis Part 1: General principles of testing.*

SANS 1833-4, *Textiles - Quantitative chemical analysis Part 4: Mixtures of certain protein and certain other fibres (method using hypochlorite).*

SANS 5113, *Non-fibrous material content of wool.*

SANS 5278, *Sewing stitches per unit length.*

SANS 5726, *Seaming properties of woven textile fabrics.*

SANS 6116, *Resistance of textile fabrics to pilling and fuzzing (Random tumble method).*

SANS 6026:2005, *Dry-cleaning pretreatment of textile fabrics.*

SANS 10011, *Care-labelling of textile piece-goods, textile articles and clothing.*

SANS 10076-5, *The assessment of defects in textile piece-goods and made-up articles Part 5: Defects in woven woollen and worsted piece-goods.*

SANS 10235, *Fibre-content labelling of textiles and textile products.*

SANS 10371, *Terms and definitions for clothing.*

SANS 13934-1/ISO 13934-1, *Tensile properties of fabrics, Part 1: Determination of maximum force and elongation at maximum force using the strip method.*

⁴ SABS: Tel. +27 (0) 12 4287911
www.sabs.co.za

Doc No	Item No	Date	Version	Page	No of pages
SAA2008	CL08	September 2015	03.0	21	23

ANNEX A

(Normative)

Special conditions of tender

A-1 GENERAL

A-1.1 Unless otherwise stated, the South African Bureau of Standards shall be the inspecting authority.

Any applications for deviations from drawings or the specification, or any laid down process, treatment or procedures as set out in this specification, must be made to the SA Airways and verified by the SABS⁵. All applications must be submitted in writing.

A-1.2 Three pre-production sample coats in different sizes, shall have been inspected, tested and approved by the inspecting authority before bulk production is commenced. Each one of these samples shall be accompanied by a trim chart containing a sample of each component material (as given in 6) and the relevant certificates. It shall be the duty of the manufacturer to give adequate notice to the inspecting authority of the availability of these samples.

A-1.3 The coats shall be subject to inspection during the course of manufacture. The inspector shall, during normal working hours, be given all reasonable facilities for carrying out his duties and shall have the right of entry into the contractor's factory and the factory or works of any subcontractor where work on coats supplied to this specification may be in progress

A-1.4 The contractor shall inspect the finished coats for compliance with the specification before submitting them to the inspecting authority for final inspection.

A-1.5 Before acceptance, the coats shall have been inspected and tested by the inspecting authority and found to comply with the requirements of the specification.

A-2 DOCUMENTATION

One container of each consignment shall be marked "DOCUMENTS" and in addition to the coats, shall contain the following:

- a) The packaging slip or delivery note;
- b) where applicable the inspection certificate(s);
- c) a copy of the invoice containing the following information:
 - the order number
 - the financial authority number
 - a full description of the consignment, i.e. Item Number, quantity, etc

⁵ SABS Inspection Authority: (Tel) 012 4287371.

Doc No	Item No	Date	Version	Page	No of pages
SAA2008	CL08	September 2015	03.0	22	23

ANNEX B
(Normative)
CKS 129 Colours

Due to the fact that colours can change over a period of time, any colour standard which has been registered for a period of SEVEN YEARS or more shall be considered obsolete. These standards shall then be allocated an archived status (as opposed to current status) and re-registration shall be required.

A. The following scenarios require a submission of three metres of fabric from the successful tenderer:

1. A colour standard is archived.
2. First time registration is required (CKS 129 colour number does not exist).
3. Colour swatch stock at the SABS is no longer available.

B. Requirements for the submission of fabric as identified in A:

1. The colour shall be as agreed upon between the South African Airways and the successful bidder.
2. The fabric shall be used to make new colour swatches which shall be the responsibility of the SABS.
3. The cost of the three metres of fabric shall be incorporated in the relevant bid submission.

HISTORY SHEET				
DOC ISSUE	DATE	AMENDMENTS/HISTORY	CHECKED	
			NAME	INIT.
1	January 2010	First release		
2	March 2014	Align with new sample New size chart Add side body panel Omit cuff buttons Shift top button position Change pocket position Change Belt loops Add two lining types		
3	September 2015	Refer to tailoring shoulder pad Keep back vent 35 cm on all sizes as per SABS recommendation		

Doc No	Item No	Date	Version	Page	No of pages
SAA2008	CL08	September 2015	03.0	23	23