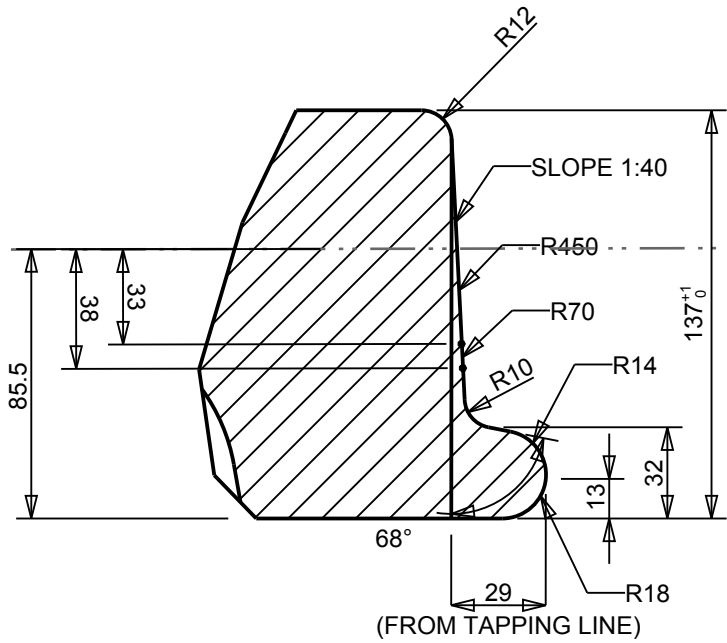
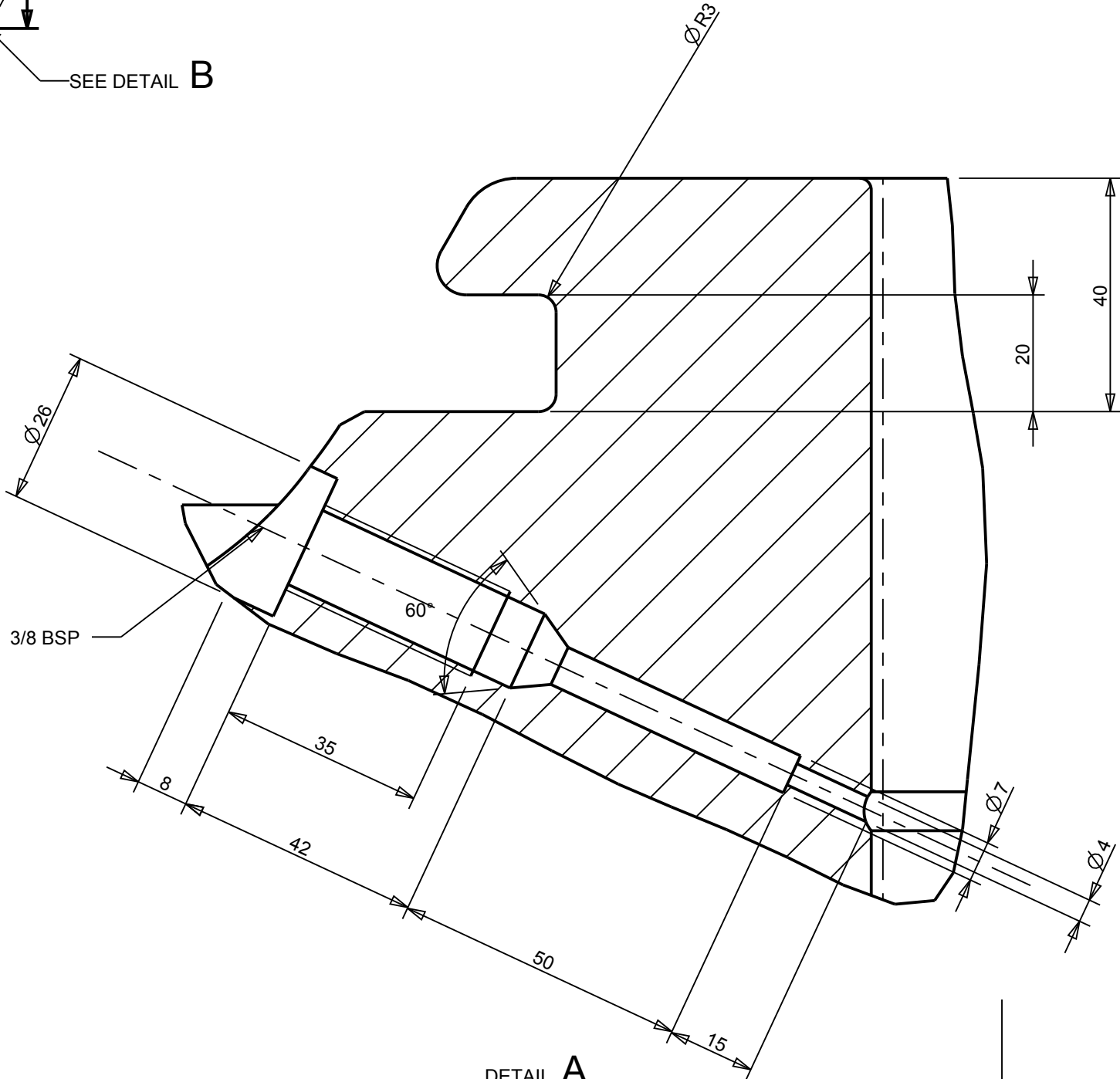


SECTION A-A



DETAIL B
SCALE 2:5



DETAIL A
SCALE 1:1

NOTE:

- 1) $\sqrt[6.3]{}$ ALL OVER EXCEPT WHERE OTHERWISE INDICATED.
REMOVE ALL SHARP EDGES.
- 2) STENCIL ON EACH WHEEL AS PER RS/ME/SP/021.
- 3) THE SUPPLIER MUST MACHINE THE WHEEL TREAD PROFILE NO.22 (RSA_088_0001_234) UP TO TOP OF THE FLANGE BUT THE FLANGE THICKNESS AT 32MM WHEEL WIDTH AT 137MM.
- FORGED WHEELS TO BE 100% MACHINED.
- 4) NO FORGED SURFACES ALLOWED ON THE SURFACE OF THE WHEELS.
- 5) EDGES DEBURRED.
- 6) TENDERERS ARE TO SUPPLY DIMENSIONED DRAWINGS WITH TENDERS SHOWING THE SECTION BETWEEN THE RIM AND THE BOSS OF THE WHEEL THEY PROPOSE TO SUPPLY.
- 7) MAXIMUM ALLOWABLE ECCENTRICITY BETWEEN ROUGH BORE AND TREAD AT TAPPING LINE, 0.2mm.
- 8) WHEELS TO CONFORM TO THE REQUIREMENTS OF RS/ME/SP/021 FOR WROUGHT STEEL WHEELS.
- 9) ROTUNDITY-MAX ALLOWABLE GAP BETWEEN TREAD AND A RING GAUGE: 0.025
- 10) PROTECTION AS PER RS/ME/SP/021.

-/A
DRAWING ALTRED
PD_PEL_KLP_DRW_05A
2020-09-22 N.NDITWANI

AMENDMENTS

MASS 675.57 Kg

MATERIAL

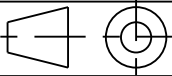
STEEL
RS/ME/SP/021
CLASS C

SHEET 1 OF 1

COPYRIGHT
THIS DRAWING TOGETHER WITH THE COPYRIGHT
IS THE PROPERTY OF
TRANSNET
THIS DRAWING OR ANY PART THEREOF IS NOT
TO BE COPIED OR OTHERWISE REPRODUCED
OR USED FOR MANUFACTURE OR ANY OTHER
PURPOSE WITHOUT THE WRITTEN PERMISSION
FROM
CHIEF EXECUTIVE,
TRANSNET ENGINEERING

A-2

PROJECTION



ASSEMBLY DRG No.

DRAWN

N.T.N.

CHECKED

N.C.L.

CLASS 20E, 22E

APPROVED

B.E.D.

TYPE ELECTRIC LOCOMOTIVE

DATE

2016-11-03

SCALE

1:5

DOCUMENT REFERENCE No.

PD_PEL_KLP_DRW_05A

KILNER PARK

WHEELS

WHEEL

1220mm LOCOWHEEL

20E, 22E

TRANSNET ENGINEERING

No.

PEL05A0240

REV A