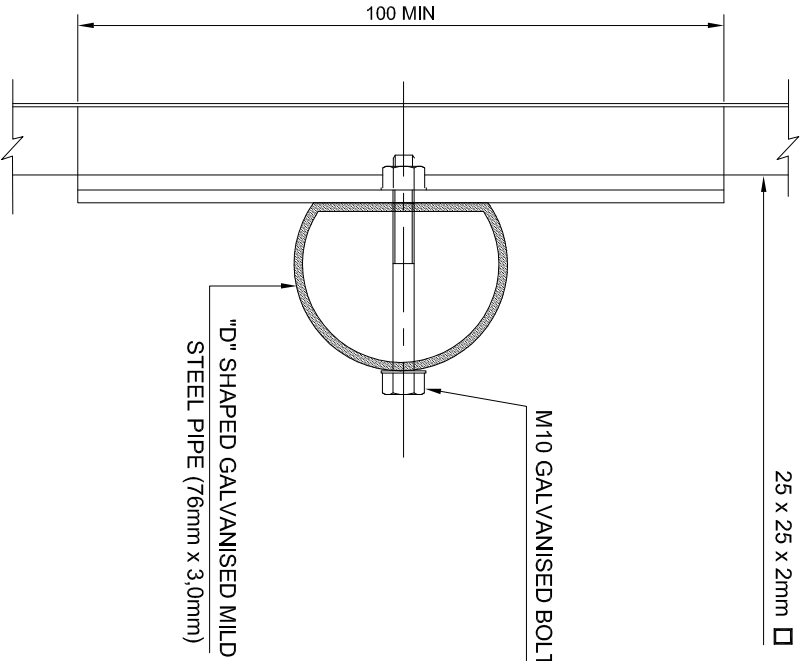
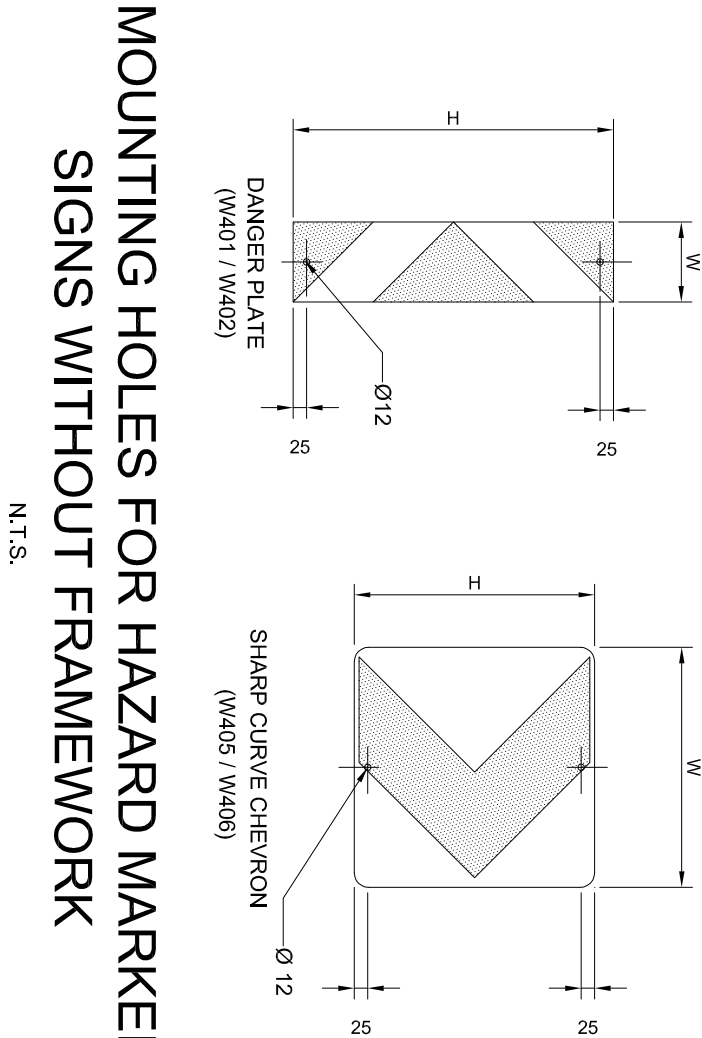


SIDE ELEVATION
N.T.S.



SIDE ELEVATION
N.T.S.

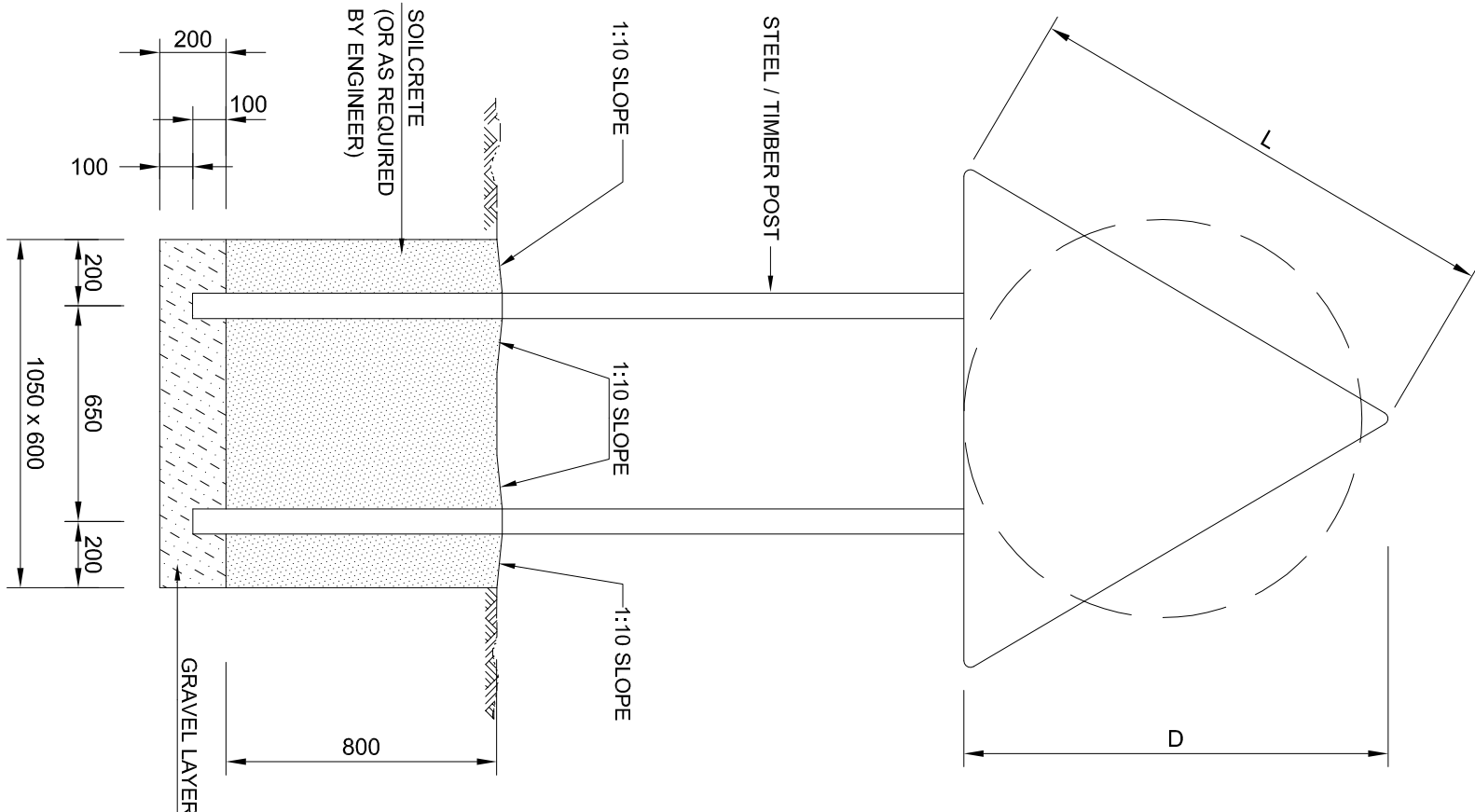


MOUNTING HOLES FOR HAZARD MARKER
SIGNS WITHOUT FRAMEWORK
N.T.S.

HAZARD MARKER SIGNS			
DANGER PLATE SIGN W401-RIGHT W402-LEFT		SHARP CURVE CHEVRON W405-RIGHT W406-LEFT	
OPERATING SPEED (km/h)	SIZE H x W (mm)	SIZE H x W (mm)	SIZE H x W (mm)
120	800 x 200	600 x 600	600 x 600
100	800 x 200	600 x 600	600 x 600

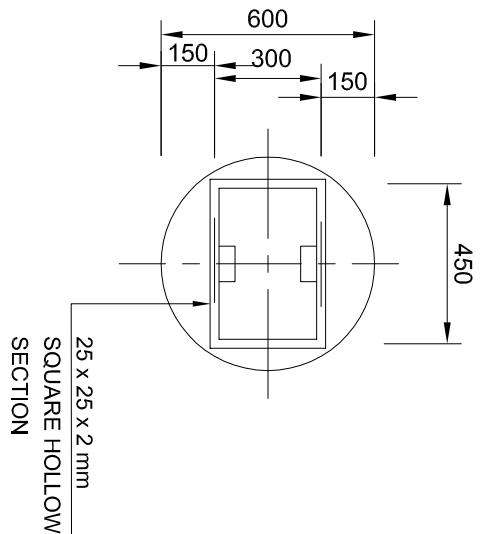
NOTES :

- THE ROAD SIGN FACES SHALL BE MANUFACTURED AND ERECTED IN ACCORDANCE WITH THE FOLLOWING REQUIREMENTS.
- STRUCTURAL STEEL SECTIONS SHALL BE MILD STEEL CONFORMING TO THE REQUIREMENTS OF SANS 1431.
- GRADE 300W, RECTANGULAR HOLLOW SECTION AND SPECIAL CHANNEL PROFILES MAY BE COLD FORMED OF COMMERCIAL QUALITY MILD STEEL. ALL SECTIONS SHALL BE HOT-DIP GALVANISED IN ACCORDANCE WITH THE REQUIREMENTS OF SANS 121 : 2000 (ISO 1461 : 1999).
- TIMBER POLE SUPPORTS SHALL COMPLY WITH THE REQUIREMENTS SHOWN ON SHEET 2.
- BOLTS, WASHERS AND NUTS SHALL COMPLY WITH THE REQUIREMENTS OF SANS 1700-S-1 AND SHALL BE GALVANISED IN ACCORDANCE WITH THE REQUIREMENTS OF SANS 121 : 2000 (ISO 1461 : 1999).
- BLIND RIVETS SHALL BE 4.8mm DIA CADMIUM PLATED MILD STEEL.

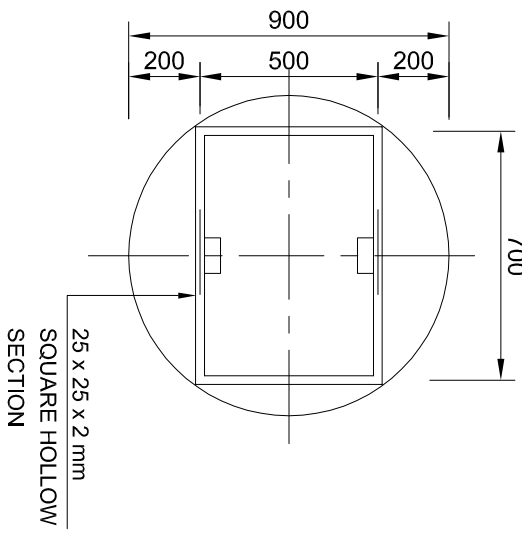


FOUNDATION DETAIL
L = 1500 AND D = 1200
SCALE 1:30

SINGLE SUPPORT

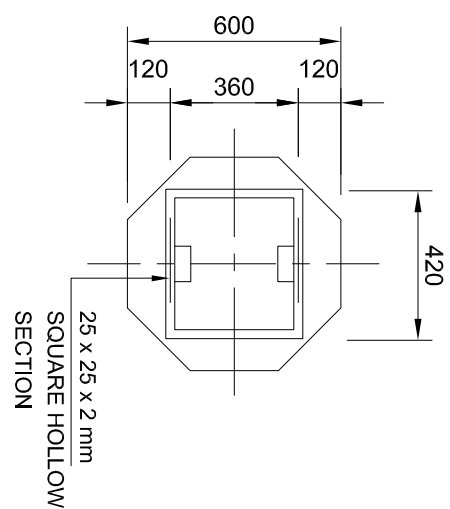


SINGLE SUPPORT

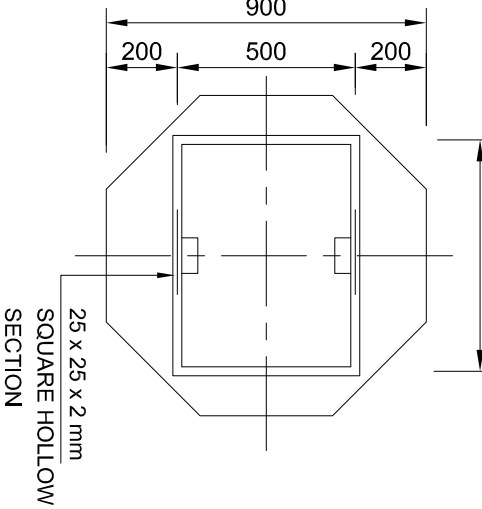


REINFORCEMENT FOR CIRCULAR ROAD SIGNS

SCALE 1:30



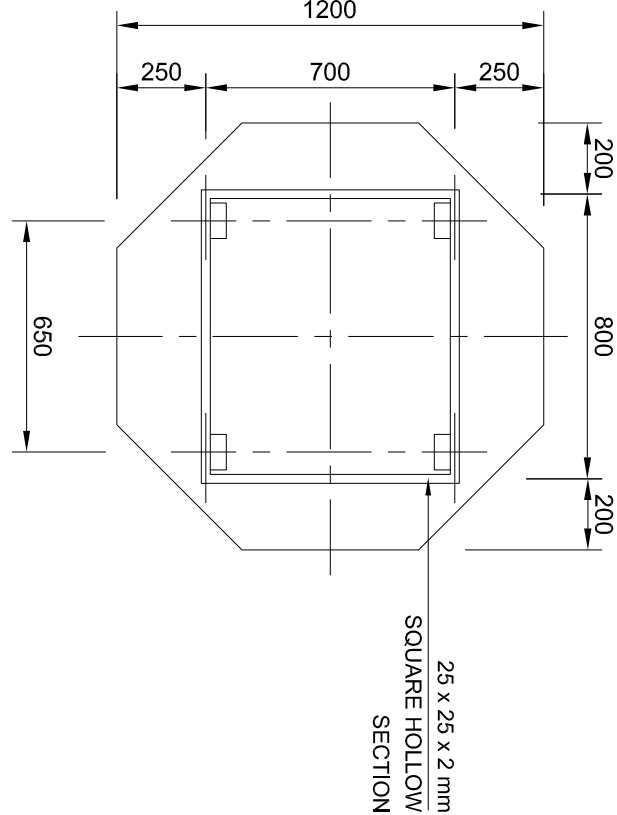
SINGLE SUPPORT



SINGLE SUPPORT

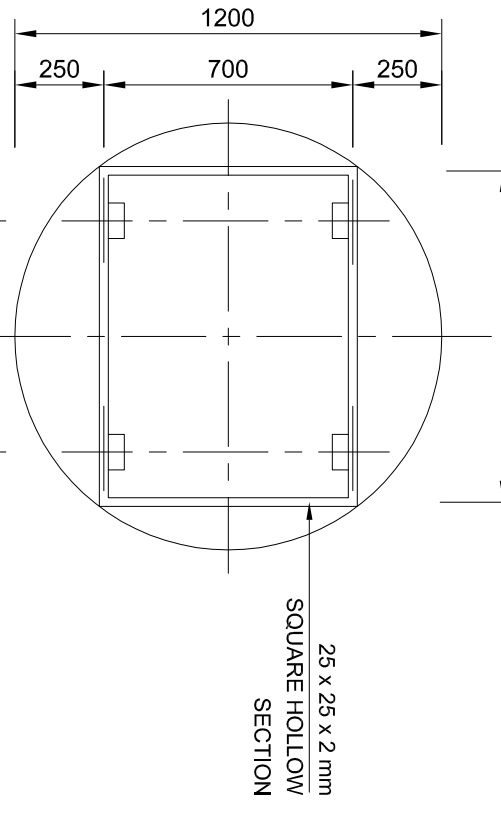
REINFORCEMENT FOR STOP SIGNS

SCALE 1:30



DOUBLE SUPPORT

DOUBLE SUPPORT

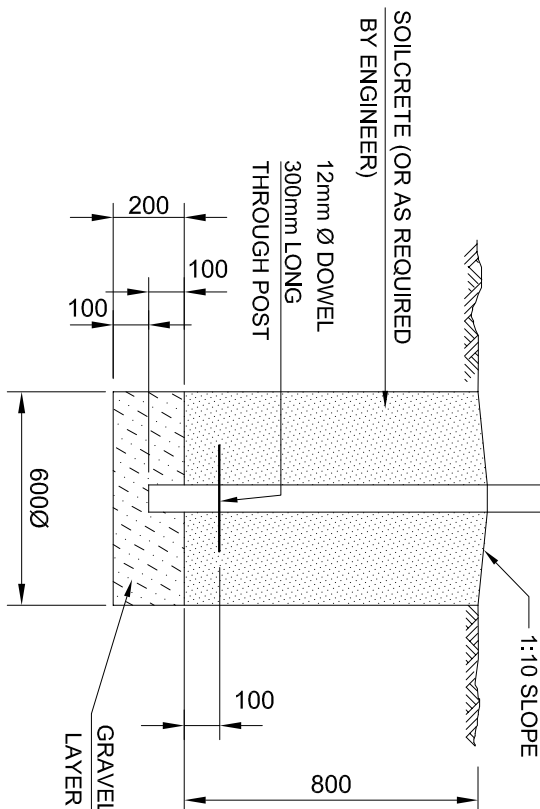


ADVANCE WARNING SIGN LOCATION AND SIZE			
OPERATING SPEED (km/h)	LOCATION (DISTANCE FROM HAZARD) (m)	SIZE (mm)	
120	330	1500	
100	240	1500	
80	160	1200	
60	120	900	

MINIMUM REGULATORY SIGN SIZES			
	OPERATING SPEED (km/h)		
	100 - 120	70 - 90	60
CIRCULAR SIGN DIAMETER (mm)	1200	900	600
RECTANGULAR SIGN WxH (mm)	1200 x 900	900 x 675	600 x 450
TRIANGULAR SIGN SIDE LENGTH (mm)	1500	1200	900

NOTES :

- THE ROAD SIGN FACES SHALL BE MANUFACTURED AND ERECTED IN ACCORDANCE WITH THE FOLLOWING REQUIREMENTS :
- DETAILS ON THIS DRAWING ARE APPLICABLE TO ROAD SIGNS SMALLER THAN 1.5m² REQUIRING DOUBLE / SINGLE SUPPORTS.
- STRUCTURAL STEEL SECTIONS SHALL BE MILD STEEL CONFORMING TO THE REQUIREMENTS OF SANS 1431. GRADE 300W, RECTANGULAR HOLLOW SECTION AND SPECIAL CHANNEL PROFILES MAY BE COLD FORMED OF COMMERCIAL QUALITY MILD STEEL. ALL SECTIONS SHALL BE HOT-DIP GALVANISED IN ACCORDANCE WITH THE REQUIREMENTS OF SANS 121 : 2000 (ISO 1461 : 1999).



FOUNDATION DETAIL
L ≤ 1200 AND D ≤ 900
SCALE 1:30

COPYRIGHT RESERVED

ON RECEIPT OF REVISED DRAWING, DESTROY PREVIOUS DRAWING

NOTES

ISSUED FOR TENDER

LEGEND

CLIENT:

CITY OF LIMBOMBELA

THE ULTIMATE DESTINATION

MBOMBELA LOCAL MUNICIPALITY

HEAD OFFICE

P.O. BOX 46

MBOMBELA, 1201

TEL NO.: (013) 759 9111

FAX NO.: (013) 759 2070

MBOMBELA LOCAL MUNICIPALITY

HEAD OFFICE

P.O. BOX 46

MBOMBELA, 1201

TEL NO.: (013) 759 9111

FAX NO.: (013) 759 2070

PROJECT TITLE:

CONSTRUCTION OF KAMADAKWA RING ROAD

DRAWING TITLE:

ROAD SIGNS : SMALLER ROAD SIGN ATTACHMENT AND FIXING DETAILS

DESIGNED:

P TSHABALALA

CHECKED:

F BURGER

DATE:

FEBRUARY 2023

CONTRACT NO.:

AS SHOWN

SCALE:

FEBRUARY 2023

DATE:

AS SHOWN

REVISION:

CONTRACT NO.:

AS SHOWN