

**PRINTING INFORMATION:**

Branding Type: Embroidery  
Ladies Long Sleeve Aspen Shirt  
Ladies Short Sleeve Aspen Shirt  
2

Stock Description: Black, Red 032 C

Stock Description:  
Number of colours:  
PANTONE COLOUR:

**SABS**



**Left Chest:** Actual size of embroidery  
70mm wide and 15.8mm high

**PRINTINGINFORMATION:**

Branding Type: Embroidery

Stock Description:

Ladies Long Sleeve Aspen Shirt  
Ladies Short Sleeve Aspen Shirt

Stock Description:

286c 

485c 

356c 

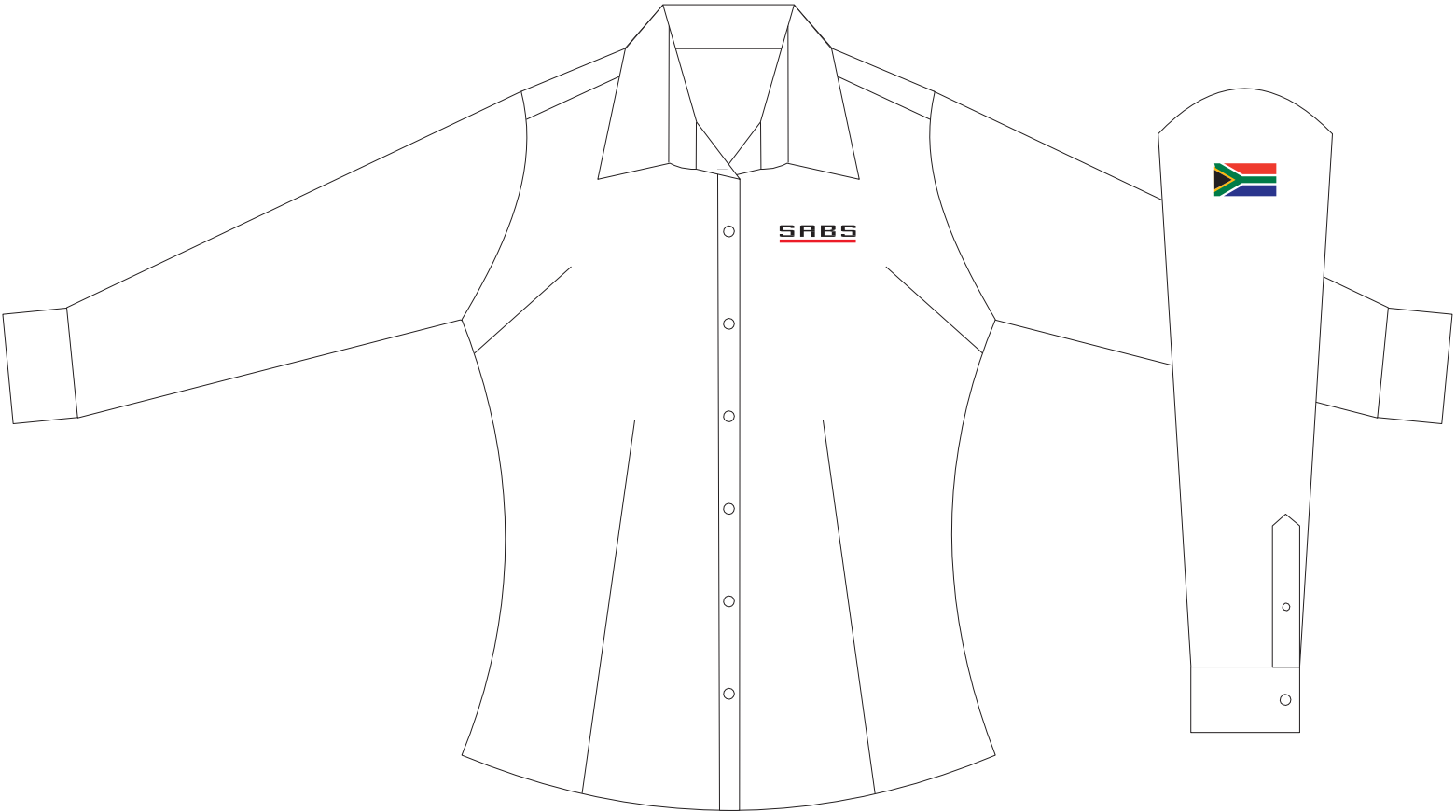
Process Yellow c   
White 



Black 

**Left Sleeve:** Actual size of embroidery  
50mm wide and 26mm high

SIZE OF ITEM REDUCED FOR LAYOUT



Left  
Sleeve

Front