






11

	MATLA POWER STATION SCOPE OF WORK		Document Identifier 14593	Rev 7
			Effective Date October 2024	
			Review Date October 2027	

TITLE: Provision of Grounds Maintenance, Horticultural, Alien and Invasive Plants Removal and Control Services at Matla Power Station and Kriel Town Eskom offices and Flats for a period of 36 months

REF:QA/QC 002		Reference Rev No:1	MULTIDISCIPLINARY: No	Plant Level: All
COMPILED BY	Name: Bethuel Moeng	Signature: 	Date: 10/09/2025	
APPROVED	Name: N/A Line Manager	Signature:	Date:	
APPROVED	Name: Lutendo Murovhi Group Manager	Signature: 	Date: 10/09/2025	
REVIEWED	Name: Bareng Montshioagae Quality Department	Signature: 	Date: 15.09.2025	
REVIEWED	Name: Lynton Mudau Occupational Health and Safety	Signature: 	Date: 16/09/2025	
REVIEWED	Name: Mahlatse Themane Environmental Department	Signature: 	Date: 10/09/2025	
ACCEPTED	Name: Outage Manager/Maintenance manager/ Supplier	Signature:	Date:	

Reference No: QA/QC 002	Reference Rev No:	Date: 2023/03/01	Page 1 of 64
-------------------------	-------------------	------------------	--------------

Controlled Disclosure

When downloaded from the document management system, this document is uncontrolled and the responsibility rests with the user to ensure it is in line with the authorized version on the system. No part of this document may be reproduced in any manner or form by third parties without the written consent of Eskom Holdings SOC Ltd, © copyright Eskom Holdings SOC Ltd, Reg No 2002/015527/30

	MATLA POWER STATION SCOPE OF WORK	Document Identifier	14593	Rev	7
		Effective Date	October 2024		
		Review Date	October 2027		

ACCEPTED	Name: <i>AIA</i>	Signature:	Date
-----------------	---------------------	------------	------

NB: Do not tamper with the template.

GENERAL

- Data books, reviews, reports, and diagrams/drawings shall be submitted to Engineering after the completion of the work. Engineering to forward the data books to Quality Department (Document Control)
- All QCP's to be submitted to Engineering and Quality for approval prior to outage/project or maintenance work commencement.

	SCOPE OF WORK DESCRIPTION / ACTIVITY	PROCEDURE, SPECIFICATION, ENG. REQUIREMENTS / DOCUMENTATION	HOLD POINTS, WITNESS, REPORTS	RESPON SIBLE PARTY
1.1	Occupational Health and Safety	<ul style="list-style-type: none"> • Health and safety file should be approved by Safety risk management department prior to any work commences on site • All work is to be done in accordance with OHS Act 85 of 1993, Matla plant procedures and Plant Safety Regulations. (240-150642762). 	Eskom to witness.	Contractor

Reference No: QA/QC 002	Reference Rev No:	Date: 2023/03/01	Page 2 of 64
--------------------------------	-------------------	------------------	--------------

Controlled Disclosure

When downloaded from the document management system, this document is uncontrolled and the responsibility rests with the user to ensure it is in line with the authorized version on the system. No part of this document may be reproduced in any manner or form by third parties without the written consent of Eskom Holdings SOC Ltd, © copyright Eskom Holdings SOC Ltd. Reg No 2002/015527/30

	MATLA POWER STATION SCOPE OF WORK	Document Identifier 14593	Rev 7
		Effective Date October 2024	
		Review Date October 2027	

		<ul style="list-style-type: none"> • Matla power station SHEQ induction must be done before access to site can be granted • The contractor should ensure that all employees have acquired the required competency for the task they are performing. • The contractor to ensure compliance to updated legal requirements and other requirements. • BUY QUIET: All stakeholders are encouraged to purchase or rent quieter machinery, equipment, and tools to reduce worker noise exposure, contribute towards compliance to OHS noise exposure limits and ultimately reduce the risk of noise induced hearing loss. 		
1.2	Environmental Management.	<ul style="list-style-type: none"> • All activities listed in the National Environmental Act 107 of 1998, EIA Regulations as amended, must have environmental AUTHORISATION before commencement of work. • The contractor shall comply with all applicable legal and other requirements. • The polluter pays principle will be applied. 	Eskom to witness.	Contractor

Reference No: QA/QC 002	Reference Rev No:	Date: 2023/03/01	Page 3 of 64
--------------------------------	-------------------	------------------	--------------

Controlled Disclosure

When downloaded from the document management system, this document is uncontrolled and the responsibility rests with the user to ensure it is in line with the authorized version on the system. No part of this document may be reproduced in any manner or form by third parties without the written consent of Eskom Holdings SOC Ltd, © copyright Eskom Holdings SOC Ltd, Reg No 2002/015527/30

	MATLA POWER STATION SCOPE OF WORK		Document Identifier	14593	Rev	7
			Effective Date	October 2024		
			Review Date	October 2027		

		<ul style="list-style-type: none"> The contractor manager shall ensure compliance with Eskom Matla Environmental procedures to ensure the prevention of pollution (refer: OMOP 4090 and 4402). The last payment will be processed based on the status of the last housekeeping check sheet (Annexure C: OMOP 4402) of designated area. EMS file based on ISO14001 will be required. 		
1.3	Quality Management	<ul style="list-style-type: none"> The contractor/executioner of work will be responsible for drawing up all QCP documentation and this must be approved by engineering and authorised by the Quality Department before commencing with the work. Contractors/executioner to adhere to QM 58 and OMOP4497 requirements Number of NCR issued can affect your next tendering process. The QCP shall be signed progressively by the Engineer/Supervisor, Eskom QC Inspector, Contractor QC Inspector and/or AIA. No procuring of outage items without the approval of scopes by quality 	Hold point	Contractor

Reference No: QA/QC 002	Reference Rev No:	Date: 2023/03/01	Page 4 of 64
--------------------------------	-------------------	------------------	--------------

Controlled Disclosure

When downloaded from the document management system, this document is uncontrolled and the responsibility rests with the user to ensure it is in line with the authorized version on the system. No part of this document may be reproduced in any manner or form by third parties without the written consent of Eskom Holdings SOC Ltd, © copyright Eskom Holdings SOC Ltd, Reg No 2002/015527/30

	MATLA POWER STATION SCOPE OF WORK		Document Identifier 14593	Rev 7
			Effective Date October 2024	
			Review Date October 2027	

		<ul style="list-style-type: none"> All outage scopes creep and scopes addition should be approved by quality No contractor should be in the possession of scopes for execution without the scopes approved by quality The contractor is subjected to quality auditing at any point in time during execution of scope 		
1.4	Inputs from other departments			
1.5	Commissioning reference			

	SCOPE OF WORK DESCRIPTION / ACTIVITY	PROCEDURE, SPECIFICATION , ENG. REQUIREMENT	HOLD POINTS , WITNE SS,	RESPON SIBLE PARTY
--	--------------------------------------	---	-------------------------------------	--------------------------

Reference No: QA/QC 002	Reference Rev No:	Date: 2023/03/01	Page 5 of 64
--------------------------------	-------------------	------------------	--------------

Controlled Disclosure

When downloaded from the document management system, this document is uncontrolled and the responsibility rests with the user to ensure it is in line with the authorized version on the system. No part of this document may be reproduced in any manner or form by third parties without the written consent of Eskom Holdings SOC Ltd. © copyright Eskom Holdings SOC Ltd. Reg No 2002/015527/30

	MATLA POWER STATION SCOPE OF WORK	Document Identifier 14593	Rev 7
		Effective Date October 2024	
		Review Date October 2027	

		S / DOCUMENTATI ON	REPOR TS	
	Provision of Grounds Maintenance, Horticultural, Alien and Invasive Plants Removal and Control Services at Matla Power Station at Matla Power station for a period of 36 months.	Alien and Invasive Plant species Assessment Report 2024; National Environmental Management Act 10 of 2004 and 2014 Invasive Alien Species Regulations		Contractor
	Provision of Grounds Maintenance, Horticultural, Alien and Invasive Plants Removal and Control Services at Matla Power Station (Areas: New Ash Dam, Old Ash Dam, Power station, Raw Water Dam (Shooting Range), Sewage Treatment Plant, Kriel Properties offices and Flats. The areas will be divided into two Sections Horticulture services (A) and Alien and Invasive control and management (B)			Contractor

Reference No: QA/QC 002	Reference Rev No:	Date: 2023/03/01	Page 6 of 64
--------------------------------	-------------------	------------------	--------------

Controlled Disclosure

When downloaded from the document management system, this document is uncontrolled and the responsibility rests with the user to ensure it is in line with the authorized version on the system. No part of this document may be reproduced in any manner or form by third parties without the written consent of Eskom Holdings SOC Ltd, © copyright Eskom Holdings SOC Ltd. Reg No 2002/015527/30


	MATLA POWER STATION SCOPE OF WORK	Document Identifier	14593	Rev	7
		Effective Date	October 2024		
		Review Date	October 2027		

	SECTION A: HORTICULTURE SERVICES The total site is divided into 100 areas or activities – refer to annexure B. These include the perimeter fence and the area within the fence. Eskom (Matla) owned land outside the perimeter fence comprising of the New Ash dam, Old ash dam, Raw water dam (Shooting Range), Sewage Treatment Plant and Kriel Properties offices and Flats.			
	1. Undertaking and responsibilities The Supplier will provide all management, labour, supervision, transport, equipment, tools, consumables including buying of flowers for offices and outside offices as when required basis to carry out the services as specified in compliance with the clients environmental policy and other conditions that may be deemed fit to impose. The supplier shall comply with the rules, regulations and standards in force at the workplace (with emphasis on safety, health and environmental compliance to regulations). The agreement will be enhanced by regular and open communication, joint planning, co-operation and sharing of responsibilities around the image and specific culture of the business unit.			Contractor
	2. Scope of work specification detail			Contractor

Reference No: QA/QC 002	Reference Rev No:	Date: 2023/03/01	Page 7 of 64
--------------------------------	-------------------	------------------	--------------

Controlled Disclosure

When downloaded from the document management system, this document is uncontrolled and the responsibility rests with the user to ensure it is in line with the authorized version on the system. No part of this document may be reproduced in any manner or form by third parties without the written consent of Eskom Holdings SOC Ltd, © copyright Eskom Holdings SOC Ltd, Reg No 2002/015527/30

	MATLA POWER STATION SCOPE OF WORK	Document Identifier 14593	Rev 7
		Effective Date October 2024	
		Review Date October 2027	

	<p>The specifications intend to explain what the contractor’s responsibility will be regarding the different tasks that must be performed and the most suitable method to adopt in doing so.</p> <p>The contractor is free to exercise his/her discretion of the appropriate method in use. The particular method and the result must conform to “professional garden practice” and to the standards required by the client.</p>			
	<p>3. Mowing and trimming</p> <p>Mowing, trimming, brush cutting and cleaning tasks must always be performed as a unity to ensure a uniform length and aesthetic acceptable appearance. Although the service calendar details the number of times a given area needs to be maintained, these numbers may vary due to climatic conditions. All road corners must be kept free from any obstructive overgrown grass (safety at road corners).</p> <p>Weather permitting, the contractor will schedule his/her mowing and trimming activities in accordance with the service calendar to achieve an acceptable clean cut, groomed and “finished off” look. The length of the cut grass may differ from place to place, and the method of mowing and trimming may vary according to the type of grass and the standard of finish required. The result must comply with professional gardening standards and with the client’s requirements.</p>			Contractor

Reference No: QA/QC 002	Reference Rev No:	Date: 2023/03/01	Page 8 of 64
--------------------------------	-------------------	------------------	--------------

Controlled Disclosure

When downloaded from the document management system, this document is uncontrolled and the responsibility rests with the user to ensure it is in line with the authorized version on the system. No part of this document may be reproduced in any manner or form by third parties without the written consent of Eskom Holdings SOC Ltd, © copyright Eskom Holdings SOC Ltd, Reg No 2002/015527/30

	MATLA POWER STATION SCOPE OF WORK	Document Identifier 14593	Rev 7
		Effective Date October 2024	
		Review Date October 2027	

	<p>Where mowing has taken place in wet conditions, ride –on and push mowers may leave tyre tread marks and windrows of half or uncut grass. These conditions may necessitate extra mowing care that the contractor must undertake as soon as the soil had dried out sufficiently for him to do so successfully.</p> <p>Scarifying / Cutting of grass where necessary during winter periods. No overgrown grass in channels or drains or in tar roads. Trees and grass along the road, on both sides of entrance road, all trees at the security building, boreholes, Ash Dump, paved areas, Gravel Road, conveyor belts and on Matla Power Station premises to be maintained continuously (clean ring around young trees, no ring barking) and fertilized twice a year (beginning and middle of growing season).</p>			
	<p>4. Edging</p> <p>All grass should be edged at the same time as the mowing operation where such grass areas adjoin building paving, manholes, trees, beds, sidewalks, fences, poles or any obstacles in lawn areas. Edging should be done by mechanical means, and no chemicals should be used except at fences where no other plants except weed or grass are growing. In these areas weed killer must be used.</p>			Contractor
	<p>5. Bed cleaning and maintenance</p> <p>Beds differ in character and in the quantity of plant material they carry. Different bed cleaning methods are used to achieve a result of conformance to standards, neatness, and cleanliness</p>			Contractor

Reference No: QA/QC 002	Reference Rev No:	Date: 2023/03/01	Page 9 of 64
--------------------------------	-------------------	------------------	--------------

Controlled Disclosure

When downloaded from the document management system, this document is uncontrolled and the responsibility rests with the user to ensure it is in line with the authorized version on the system. No part of this document may be reproduced in any manner or form by third parties without the written consent of Eskom Holdings SOC Ltd. © copyright Eskom Holdings SOC Ltd. Reg No 2002/015527/30

	MATLA POWER STATION SCOPE OF WORK	Document Identifier	14593	Rev	7
		Effective Date	October 2024		
		Review Date	October 2027		

	<p>and having a pleasing appearance. The contractor will adapt his/her cleaning method to the requirements of the bed.</p> <p>Exposed soil will be weed free with no foreign objects and levelled out. Where beds are covered with mulch or any other soil additive this must also be free of weed and other foreign objects. Beds totally covered with groundcovers may have to be cut back periodically to stimulate new growth.</p>			
	<p>6. Irrigation Watering is an initial growth requirement for new trees and plants and a further requirement during severe climate strain. Watering will be performed manually with the aid of a portable water tank or hose. The supplier will be expected to install sprinklers at the station for irrigation.</p>			Contractor
	<p>7. Weed & pest control (manual or chemical) The eradication of weeds - whether manually, mechanically or by chemical means - is the responsibility of the contractor. The contractor will determine the most effective method of weed eradication and remove such weeds when required according to the rules of normal professional garden practice.</p> <p>The eradication of weeds applies to all specified areas within the contract. The contractor will ensure that applied herbicides will cause no long - term soil imbalance / or detrimental effect</p>			Contractor

Reference No: QA/QC 002	Reference Rev No:	Date: 2023/03/01	Page 10 of 64
--------------------------------	-------------------	------------------	---------------

Controlled Disclosure

When downloaded from the document management system, this document is uncontrolled and the responsibility rests with the user to ensure it is in line with the authorized version on the system. No part of this document may be reproduced in any manner or form by third parties without the written consent of Eskom Holdings SOC Ltd, © copyright Eskom Holdings SOC Ltd, Reg No 2002/015527/30

	MATLA POWER STATION SCOPE OF WORK	Document Identifier 14593	Rev 7
		Effective Date October 2024	
		Review Date October 2027	

	<p>because of the indiscriminate use of such herbicides. An environmental clause might be stipulated on the MSDS or alternatively the product must be accompanied by a report from the supplier relating to probable impacts.</p> <p>Application of herbicides must adhere to all safety, environmental and health legislation and regulations. A suitable qualified person who is registered in terms of the chemicals control act (act 36 of 1947) must handle the application of these chemicals. The necessary certificate must be presented to the environmental officer. Only approved herbicides may be utilised. Material safety data sheets (SDS's) are a requirement and copies of all relevant SDS's must be supplied to the environmental officer.</p> <p>The control of pests applies to outdoor areas only on lawns, in beds, on trees, shrubs and other foliage. The contractor will, under the rules of normal professional garden practice, control such pests as and when their appearance becomes evident or in the interests of the plants affected so as not to detract from the general appearance of the contracted areas. The contractor undertakes to limit the use of such pesticides to avoid any adverse long-term effects such chemicals may have on plant growth and soil fertility. Pests are identified as insects that may invade plant material. As with the application of chemicals for weed, a suitable qualified person who is registered in terms of the chemicals control act, must apply / utilise chemicals for the control of pests.</p>			
--	---	--	--	--

Reference No: QA/QC 002	Reference Rev No:	Date: 2023/03/01	Page 11 of 64
--------------------------------	-------------------	------------------	---------------

Controlled Disclosure

When downloaded from the document management system, this document is uncontrolled and the responsibility rests with the user to ensure it is in line with the authorized version on the system. No part of this document may be reproduced in any manner or form by third parties without the written consent of Eskom Holdings SOC Ltd. © copyright Eskom Holdings SOC Ltd. Reg No 2002/015527/30

	MATLA POWER STATION SCOPE OF WORK	Document Identifier 14593	Rev 7
		Effective Date October 2024	
		Review Date October 2027	

	<p>Daily update of a chemical usage register is required (minimum requirements: name of substance, quantity used, dilution factor if applicable, name of qualified person, key control). A report of all hazardous substances used to accompany by the relevant SDS needs to be forwarded to the environmental officer on a 3 monthly basis</p>			
	<p>8. Pruning Trees, shrubs and plants may require annual or periodic pruning during their lifetime. The contractor will identify which plants require pruning and determine when this is to be done to the best advantage of the plant. This ensures aesthetic appeal and realises the long-term growth potential, development and ultimate shape of the plant. This ensures aesthetic appeal and realises the long-term growth potential, development and ultimate shape of the plant. All trees that are obstructing the road in areas where they are deemed unsafe for visibility or damaging the buildings or structures must be prioritised.</p>			Contractor
	<p>9. Thinning out / removal of dead flowers - Thinning out particularly in flowerbeds. - Thinning out where overgrowth results in an unsightly appearance and not in accordance with professional gardening practice.</p> <p>This activity will be undertaken timorously to check unfavourable growth and maintain correct fullness and appearance of the area while avoiding any adverse effects on the recovery of the</p>			Contractor

Reference No: QA/QC 002	Reference Rev No:	Date: 2023/03/01	Page 12 of 64
--------------------------------	-------------------	------------------	---------------

Controlled Disclosure

When downloaded from the document management system, this document is uncontrolled and the responsibility rests with the user to ensure it is in line with the authorized version on the system. No part of this document may be reproduced in any manner or form by third parties without the written consent of Eskom Holdings SOC Ltd, © copyright Eskom Holdings SOC Ltd, Reg No 2002/015527/30

	MATLA POWER STATION SCOPE OF WORK	Document Identifier 14593	Rev 7
		Effective Date October 2024	
		Review Date October 2027	

	<p>remaining plants and their long-term ability to mature. The contractor may choose to thin out annually or as an ongoing exercise depending on the growth and development of the plants.</p>			
	<p>10. Raking / sweeping Debris in the form of leaves, grass cuttings, twigs and other garden waste will either be swept or raked into a pile, bagged and removed by the contractor before such debris becomes unsightly. The contractor will remove and transport all garden waste to a site designated for this purpose by the client. Only garden refuse may be dumped there, no litter will be allowed. Permission to enter / use the site will be granted to the contractor. The main road from the Main gate to Thandanani shall be swept daily or as and when required basis. The dumpsite is within the Matla property. Return distance 11 km.</p> <p>Procedure:</p> <ul style="list-style-type: none"> - Weigh every individual load and record it. Alternatively, the volume can be measured as opposed to mass. - Ensure that records are received by environmental management to be captured within the bi-annual environmental report. 			Contractor
	<p>11. Management of litter Collection of litter (i.e. Domestic waste, launch wraps etc.) is a daily requirement in all maintenance areas and ground litter needs to be picked up and placed in plastic refuse bags or</p>			Contractor

Reference No: QA/QC 002	Reference Rev No:	Date: 2023/03/01	Page 13 of 64
--------------------------------	-------------------	------------------	---------------

Controlled Disclosure

When downloaded from the document management system, this document is uncontrolled and the responsibility rests with the user to ensure it is in line with the authorized version on the system. No part of this document may be reproduced in any manner or form by third parties without the written consent of Eskom Holdings SOC Ltd. © copyright Eskom Holdings SOC Ltd. Reg No 2002/015527/30

	MATLA POWER STATION SCOPE OF WORK	Document Identifier 14593	Rev 7
		Effective Date October 2024	
		Review Date October 2027	

<p>designated bins for transportation to the dumpsite. Deteriorated waste bins must be reported to environmental management and will be replaced at the client's cost. The frequency of picking up litter will be as per the contractor own schedule; however the employer expectation is for all the areas to be always kept clean. The frequency will be increased to two (2) during outages to account for the volumes of people on site and waste generated. Littering also includes but not limited to cigarettes buds and any other foreign objects that is contradictory to housekeeping. These will be dumped in available bins within the station.</p>			
<p>12. Garden refuse, uplifting and removal Garden refuse is refuse generated by the contractor during these normal activities and does not include refuse from any other source.</p> <p>This refuse may include branches, leaves and other plant matter but may also consist of other objects that need to be disposed of from the contract maintenance areas according to the service agreement. This refuse must be disposed of as soon as it is practically possible to the dumpsite designated by the client. The larger pieces should be cut into smaller pieces to ensure no floating on the ash disposal facility.</p>			Contractor
<p>13. Top dressing, levelling Suitable weed free topsoil will be provided by the client for loading, transport and delivery by the contractor to the areas were filling in and levelling may be necessary as part of an upgrading</p>			Contractor

Reference No: QA/QC 002	Reference Rev No:	Date: 2023/03/01	Page 14 of 64
--------------------------------	-------------------	------------------	---------------

Controlled Disclosure

When downloaded from the document management system, this document is uncontrolled and the responsibility rests with the user to ensure it is in line with the authorized version on the system. No part of this document may be reproduced in any manner or form by third parties without the written consent of Eskom Holdings SOC Ltd, © copyright Eskom Holdings SOC Ltd, Reg No 2002/015527/30

	MATLA POWER STATION SCOPE OF WORK	Document Identifier	14593	Rev	7
		Effective Date	October 2024		
		Review Date	October 2027		

	/ erosion control programme. The topsoil will be available on request in convenient heaps for loading.			
	<p>14. Upgrading</p> <p>Areas to be upgraded / landscaped will be identified by the client. Quotations must be submitted to the client for approval before commencement of the work. Upgrade will be discussed during winter season where less work will be carried out by the supplier. Two months in the winter season or two months in a year will be dedicated to upgrading areas within the station. Upgrade may include, supply of vegetation, water features, purchasing of outside chairs, pots etc. All improvements and upgrading conducted, will form part of the monthly maintenance cost for those dedicated two months.</p>			Contractor
	<p>15. Replacement of plants</p> <p>Where plants have died within the landscape, the contractor will replace plants free of charge except in those circumstances beyond the control of the contractor. In such situations the replacement cost will be negotiated between the client and the contractor. De-barking while brush cutting is unacceptable, and the contractor will replace plants. Uncontrolled application of herbicides that might cause decay in plants is unacceptable and the contractor will replace the plants. Unprofessional handling / conveying of plants is unacceptable and plants will be replaced by the contractor.</p> <p>The contractor will supply 20 trees per year and the employer will specify the type of trees.</p>			Contractor

Reference No: QA/QC 002	Reference Rev No:	Date: 2023/03/01	Page 15 of 64
--------------------------------	-------------------	------------------	---------------

Controlled Disclosure

When downloaded from the document management system, this document is uncontrolled and the responsibility rests with the user to ensure it is in line with the authorized version on the system. No part of this document may be reproduced in any manner or form by third parties without the written consent of Eskom Holdings SOC Ltd. © copyright Eskom Holdings SOC Ltd, Reg No 2002/015527/30

	MATLA POWER STATION SCOPE OF WORK	Document Identifier 14593	Rev 7
		Effective Date October 2024	
		Review Date October 2027	

	<p>16. Fire break maintenance The client’s Environmental Department and Fire and risk department will specify the areas to be included into the fire break management plan annually. Details of what may be required will be negotiated on an annual basis. The contractor will supply the necessary machinery and equipment required to complete the maintenance task. Preparing fire breaks may include chemical control.</p> <p>Techniques for creating firebreaks differ from site to site. All firebreaks will conform to the standard set in report no. Trr/s/91/097rw – guidelines to establish fire breaks around power stations using herbicides (Dr E. Van Rensburg). This report also covers conventional methods of creating a fire break, e.g. ploughing, burning and bulldozing or scraping. The contractor will carry out the client’s preferred method of creating a firebreak as well as the width stipulated by the client. The fire breaks around the station facilities will be performed in winter season.</p>			Contractor
	<p>17. In-house plant care The contractor will provide office flowers and a continuous service of watering and attending to all in-house plants. He will advise the environmental officer of necessary replacements or planned changes to ensure stimulation.</p>			Contractor
	<p>18. Special events such as Arbor Week Special events, arbour day is an annual once off event. The contractor will provide human resources, flowers and trees for celebration of Arbor week, when requested by ESKOM</p>			

Reference No: QA/QC 002	Reference Rev No:	Date: 2023/03/01	Page 16 of 64
--------------------------------	-------------------	------------------	---------------

Controlled Disclosure

When downloaded from the document management system, this document is uncontrolled and the responsibility rests with the user to ensure it is in line with the authorized version on the system. No part of this document may be reproduced in any manner or form by third parties without the written consent of Eskom Holdings SOC Ltd. © copyright Eskom Holdings SOC Ltd, Reg No 2002/015527/30

	MATLA POWER STATION SCOPE OF WORK	Document Identifier 14593	Rev 7
		Effective Date October 2024	
		Review Date October 2027	

	<p>19. Green Initiatives</p> <p>The contractor to assist the station to fulfil the requirement set out in Condition 7.2.15. b of the AEL that states that “</p> <p>‘‘ The license holder must improve greenspaces, particularly around established healthcare facilities and schools. The licence holder must create one greenspace per year in the community situated to closest to the power station to which the power station’s exemption application relates, starting with the worst affected community in terms of ambient air quality. In addition, the power station may use some of its unused land to establish green spaces which has to involve planting of large-scale tree farms that will improve ambient air quality by reducing wind-blown PMs. The licence holder must explain the benefits of establishing green spaces to get buy-in from the people in the community who can be enlisted to assist with establishing the green spaces.’’</p>			

Reference No: QA/QC 002	Reference Rev No:	Date: 2023/03/01	Page 17 of 64
--------------------------------	-------------------	------------------	---------------

Controlled Disclosure

When downloaded from the document management system, this document is uncontrolled and the responsibility rests with the user to ensure it is in line with the authorized version on the system. No part of this document may be reproduced in any manner or form by third parties without the written consent of Eskom Holdings SOC Ltd, © copyright Eskom Holdings SOC Ltd, Reg No 2002/015527/30

	MATLA POWER STATION SCOPE OF WORK	Document Identifier 14593	Rev 7
		Effective Date October 2024	
		Review Date October 2027	

	The contractor should ensure that: <ul style="list-style-type: none"> • The contractor Develops the greening design plan of a selected facility • Provide resources for the implementation of the greening initiative such as human resource, equipment, plants and transports 			
	20. Maintenance kit (replacement poles and treatment) Ensure a maintenance “kit” that allows for a five-year maintenance schedule for the treatment of ranch fencing poles.			Contractor
	21. Wastepaper Wastepaper recycling is the sole responsibility of the contractor. This includes the training of office cleaners to collect paper in the appropriate manner, removal of collected paper to the designated area for storage and recycling on a frequent basis. No income is expected from Matla power station as this is a bee initiative. Reporting of volumes on a bi-annual basis is a requirement of environmental management to be captured in the bi-annual environmental report.			Contractor
	22. Biodiversity Fauna			Contractor

Reference No: QA/QC 002	Reference Rev No:	Date: 2023/03/01	Page 18 of 64
--------------------------------	-------------------	------------------	---------------

Controlled Disclosure

When downloaded from the document management system, this document is uncontrolled and the responsibility rests with the user to ensure it is in line with the authorized version on the system. No part of this document may be reproduced in any manner or form by third parties without the written consent of Eskom Holdings SOC Ltd. © copyright Eskom Holdings SOC Ltd, Reg No 2002/015527/30


	MATLA POWER STATION SCOPE OF WORK	Document Identifier 14593	Rev 7
		Effective Date October 2024	
		Review Date October 2027	

	The contractor will be responsible collection of animal carcasses around the station and associated sites (ash dump, recovery dams and sewage treatment plant as and when required).			
	<p>23. Security fence Security fence specifications: inside the fence it should be always weed - free at all times, due to the sensitivity of the fence control mechanism. The fence surrounding should be cleared, 3 meter in width, both inside and outside the fence. Erosion should be reported to security. Every three years an assessment and assurance of no residual herbicide activity should be confirmed to environmental management. This should be an extra cost accounting clause.</p> <p>Prior to any vegetation clearance being conducted inside the security fence, the Service Manager/Electrical Supervisor together with the Contractor are to communicate to ensure necessary permits in line with Eskom’s Plant Safety Regulations and ORHVS are in place. The Contractor is responsible to ensure that all its employees doing work in and outside the fence is made aware of safety requirements. Only chemicals registered under Fertilizers, Farm Feeds, Agricultural Remedies and Stock Remedies Act 36 of 1947 may be used and must be approved by Eskom Environmental Officer.</p>			Contractor
	<p>24. Supply and maintenance of equipment and machinery All equipment and machinery must be supplied by the contractor and will comply with the general requirements for professional gardening service in an industrial area. It must be able to cater for the vast area and activities stipulated in the contract. Examples may include but are</p>			Contractor

Reference No: QA/QC 002	Reference Rev No:	Date: 2023/03/01	Page 19 of 64
--------------------------------	-------------------	------------------	---------------

Controlled Disclosure

When downloaded from the document management system, this document is uncontrolled and the responsibility rests with the user to ensure it is in line with the authorized version on the system. No part of this document may be reproduced in any manner or form by third parties without the written consent of Eskom Holdings SOC Ltd, © copyright Eskom Holdings SOC Ltd, Reg No 2002/015527/30

	MATLA POWER STATION SCOPE OF WORK	Document Identifier	14593	Rev	7
		Effective Date	October 2024		
		Review Date	October 2027		

<p>not restricted to ride-on lawn mowers, tractor mounted equipment, industrial type gardening tools and fire break equipment.</p> <p>Vehicles must always be roadworthy and able to carry the loads as stipulated in the service agreement. Monthly maintenance and safety inspections must be done by the contractor on all vehicles, machinery, tools and equipment to ensure contingency of service. Inspection sheets must be available for verification on monthly assessment dates. A depot will be made available on site for the use of the contractor as an office and safe keeping of all machinery and equipment. The following are some of the required equipments:</p> <ul style="list-style-type: none"> • Industrial ride on walk behind lawnmowers • Road sweeper • Fan Rakes • Lawn rakes • Heavy-duty pruners • Chainsaws • Hedge and Hedge trimmers • Shrub shears • Brush cutters • Portable water tank 	
--	--

Reference No: QA/QC 002	Reference Rev No:	Date: 2023/03/01	Page 20 of 64
--------------------------------	-------------------	------------------	---------------

Controlled Disclosure

When downloaded from the document management system, this document is uncontrolled and the responsibility rests with the user to ensure it is in line with the authorized version on the system. No part of this document may be reproduced in any manner or form by third parties without the written consent of Eskom Holdings SOC Ltd, © copyright Eskom Holdings SOC Ltd, Reg No 2002/015527/30

	MATLA POWER STATION SCOPE OF WORK	Document Identifier	14593	Rev	7
		Effective Date	October 2024		
		Review Date	October 2027		

	<ul style="list-style-type: none"> • Garden hose pipes • Rubber rakes • Professional handheld blowers • Weeding trowel • Spades • Forks • Branch pruner • Weeding trowel • LDV • Trailer • Grass cutting signs • Mist sprayer to be hooked behind the tractor to apply herbicides through the fence to the security fence • TLB to remove trees stumps (Contractor to provide rate/hour) • Cherry Picker (Contractor to provide rate/hour) 			
	25. Main road sweeping			Contractor

Reference No: QA/QC 002	Reference Rev No:	Date: 2023/03/01	Page 21 of 64
--------------------------------	--------------------------	-------------------------	----------------------

Controlled Disclosure

When downloaded from the document management system, this document is uncontrolled and the responsibility rests with the user to ensure it is in line with the authorized version on the system. No part of this document may be reproduced in any manner or form by third parties without the written consent of Eskom Holdings SOC Ltd. © copyright Eskom Holdings SOC Ltd. Reg No 2002/015527/30

	MATLA POWER STATION SCOPE OF WORK	Document Identifier	14593	Rev	7
		Effective Date	October 2024		
		Review Date	October 2027		

	<p>The supplier will be responsible for the sweeping the main road from Main gate to Thandanani and Materials Management store building, parking areas along the road using a tractor mounted sweepers on weekly basis or daily depending on the need.</p>			
	<p>26. Transport of staff The contractor is responsible for providing own transport for its employees in line with Eskom Vehicle Safety specifications (32-345) and National legislation for the transport of employees or conditions of employment. The transport is required for the staff travelling for Home-work-Home and the movement of equipment and staff around site. The Supplier to ensure that no employee will be transported in the back of open vehicles. No person may be transported in the back of vehicles even if it is closed by means of canopies, unless provided with proper seating and safety belts.</p>			Contractor
	<p>27. Site Establishment A site will be made available at Matla Power Station yard on site for the use of the Supplier as site office and safe keeping of all machinery and equipment. The Supplier will supply own consumables (coffee, tea, sugar, milk, stationery, printing and copying paper, Printing machinery etc.). It is the responsibility of the contractor to ensure that the allocated site is safe and conducive for safety and health of employees. Only Matla Power Station activities/work are allowed to be conducted on the allocated site. The contractor and its employees are not allowed to conduct work that is not for Matla Power Station on these premises.</p>			Contractor

Reference No: QA/QC 002	Reference Rev No:	Date: 2023/03/01	Page 22 of 64
--------------------------------	-------------------	------------------	---------------

Controlled Disclosure

When downloaded from the document management system, this document is uncontrolled and the responsibility rests with the user to ensure it is in line with the authorized version on the system. No part of this document may be reproduced in any manner or form by third parties without the written consent of Eskom Holdings SOC Ltd, © copyright Eskom Holdings SOC Ltd, Reg No 2002/015527/30

	MATLA POWER STATION SCOPE OF WORK	Document Identifier	14593	Rev	7	
		Effective Date	October 2024			
		Review Date	October 2027			

	Eskom shall provide the following: <ul style="list-style-type: none"> • Office • Storeroom for consumables, spares and equipment • Ablution facilities • Water supply • Electricity 			
	28. SHEQ Requirements Full compliance to the OHS Act, Health and environmental regulations and other ESKOM legal requirements. The contractor will provide ESKOM with a copy of the SHEQ (Safety, Health, Environment and Quality) plan at least two weeks before the start of the contract to ensure compliance to all their required Safety, Health, Environment and Quality procedures and standards. The contractor to ensure that all personnel working under this contract are in good health and pose no risk to any personnel working for other contractors and at Matla Power Station. The contractor must ensure that employees do periodic medical checks and submit proof to the Service Manager. The contractor to comply with all ESKOM legal requirements e.g. OHS Act no 85 of 1993. SHE Rep inspection book to be submitted to ESKOM Safety department monthly. Suppliers' employees must comply with the station emergency preparedness procedure and all site related SHEQ requirements. Keep completed checklists on			Contractor

Reference No: QA/QC 002	Reference Rev No:	Date: 2023/03/01	Page 23 of 64
--------------------------------	-------------------	------------------	---------------

Controlled Disclosure

When downloaded from the document management system, this document is uncontrolled and the responsibility rests with the user to ensure it is in line with the authorized version on the system. No part of this document may be reproduced in any manner or form by third parties without the written consent of Eskom Holdings SOC Ltd, © copyright Eskom Holdings SOC Ltd, Reg No 2002/015527/30

	MATLA POWER STATION SCOPE OF WORK	Document Identifier 14593	Rev 7
		Effective Date October 2024	
		Review Date October 2027	

	file and make them available to the Contract supervisor or the Health and Safety committee as required.			
	29. Monthly Assessments for Payment Payment will be based on a monthly assessment / agreement according to the scope of work compiled by Matla power station. Monthly assessments will be carried out to determine conformance for payment. The total site is divided into 100 areas or activities – refer to annexure B. The total monthly payment will be according to conformance of specification in all 100 areas and the Availability of the minimum required equipment. The total payment divided by 100 will give a rand value for every individual area. The amount subtracted will be for the total areas not conforming to specifications.			Contractor
	30. Reporting <ul style="list-style-type: none"> The contractor to provide daily, weekly and monthly progress updates reports inclusive of photographic evidence of work completed, including the effectiveness of the poison used (before, during and after pictures – sequence of events) and include data on species populations, areas treated, costs, and effectiveness report to client. The contractor will draft a plan at the beginning of the month, and the plan will highlight all the areas that will be worked on for that month, in a sequence of priorities and need. 			Contractor
	31. Kriel Town: Offices, Houses and Flats Areas			Contractor

Reference No: QA/QC 002	Reference Rev No:	Date: 2023/03/01	Page 24 of 64
--------------------------------	-------------------	------------------	---------------

Controlled Disclosure

When downloaded from the document management system, this document is uncontrolled and the responsibility rests with the user to ensure it is in line with the authorized version on the system. No part of this document may be reproduced in any manner or form by third parties without the written consent of Eskom Holdings SOC Ltd. © copyright Eskom Holdings SOC Ltd. Reg No 2002/015527/30

	MATLA POWER STATION SCOPE OF WORK	Document Identifier	14593	Rev	7
		Effective Date	October 2024		
		Review Date	October 2027		

	<p>The contractor will maintain the garden areas of all the Eskom Kriel Real Estate Offices, Houses, and Flats irrespective of the occupancy. These houses are limited to Moving In / Moving Out by tenants. Once a dwelling is occupied, the tenant will take responsibility for his own yard.</p> <p>Flats will be maintained on a permanent basis and include the following:</p> <ul style="list-style-type: none"> • Bokmakierie Flats, • Bachelor Flats, • Eskom Offices. <p>Lawns must be kept mown and trimmed; the frequency being as required by seasonal growth rates.</p> <p>Flower beds shall be kept free of weeds and undesirable growth.</p> <p>Trees and shrubs shall be pruned as and when required.</p> <p>All pavement and no-man’s-land areas are to be maintained.</p> <p>The complete upkeep of the</p> <ul style="list-style-type: none"> • Gardens. • Planting. • Potting. • Fertilisation and • Irrigation 			
--	---	--	--	--

Reference No: QA/QC 002	Reference Rev No:	Date: 2023/03/01	Page 25 of 64
--------------------------------	-------------------	------------------	---------------

Controlled Disclosure

When downloaded from the document management system, this document is uncontrolled and the responsibility rests with the user to ensure it is in line with the authorized version on the system. No part of this document may be reproduced in any manner or form by third parties without the written consent of Eskom Holdings SOC Ltd, © copyright Eskom Holdings SOC Ltd. Reg No 2002/015527/30

	MATLA POWER STATION SCOPE OF WORK	Document Identifier	14593	Rev	7
		Effective Date	October 2024		
		Review Date	October 2027		

	<p>SECTION B: ALIEN AND INVASIVE CONTROL AND MANAGEMENT</p> <p><u>Scope of work for Alien Invasive Species Control Project at Matla Power station</u></p> <p>1. Background</p> <p>Matla Power Station as the landowner is required to comply with the requirements of National Environmental Management Act 10 of 2004 and 2014 Invasive Alien Species Regulations whereby species that fall under category 1a must be eradicated. According to NEMBA regulations, a person in control of a Category 1a Listed Invasive Species must-</p> <p>(a) Comply with the provisions of section 73(2) of the Act;</p> <p>(b) Immediately take steps to combat or eradicate listed invasive species in compliance with Sections 75(1), (2) and (3) of the Act; and (c) Allow an authorized official from the Department to enter onto land to monitor, assist with or implement the combatting or eradication of the listed invasive species. An Invasive Species Management Programme has been developed in terms of section 75(4) of the National Environmental Management Biodiversity Act, and Matla Power station shall control the listed invasive species in accordance with the plan.</p>	National Environmental Management Act 10 of 2004 and 2014 Invasive Alien Species Regulations and Alien and Invasive Plant species Assessment Report 2024	Contractor
--	--	--	------------

Reference No: QA/QC 002	Reference Rev No:	Date: 2023/03/01	Page 26 of 64
--------------------------------	-------------------	------------------	---------------

Controlled Disclosure

When downloaded from the document management system, this document is uncontrolled and the responsibility rests with the user to ensure it is in line with the authorized version on the system. No part of this document may be reproduced in any manner or form by third parties without the written consent of Eskom Holdings SOC Ltd. © copyright Eskom Holdings SOC Ltd. Reg No 2002/015527/30

	MATLA POWER STATION SCOPE OF WORK	Document Identifier 14593	Rev 7
		Effective Date October 2024	
		Review Date October 2027	

	<p>2. Objective Provision of Alien and Invasive Species Control and Eradication Services for Plant at Matla Power Station for a period of 3 Years. New species identification, Control and Removal of alien and Invasive species. The contractor will be responsible to ensure that all alien and invasive species on site are identified, controlled and removed as per the Alien and Invasive plan or as and when required basis.</p> <p>3. High Level Scope The Contractor will be responsible for: the eradication and control of alien and invasive plant species at the following areas: Old Ash Dam complex New Ash dam complex Power station area Raw water dam area Sewage treatment Plant areas The control and eradication should be done in a phased manner over the 3 years.</p>			
--	---	--	--	--

Reference No: QA/QC 002	Reference Rev No:	Date: 2023/03/01	Page 27 of 64
--------------------------------	-------------------	------------------	---------------

Controlled Disclosure

When downloaded from the document management system, this document is uncontrolled and the responsibility rests with the user to ensure it is in line with the authorized version on the system. No part of this document may be reproduced in any manner or form by third parties without the written consent of Eskom Holdings SOC Ltd. © copyright Eskom Holdings SOC Ltd. Reg No 2002/015527/30

	MATLA POWER STATION SCOPE OF WORK	Document Identifier	14593	Rev	7
		Effective Date	October 2024		
		Review Date	October 2027		

	<p>4. Supplier Key Responsibilities: Ensure compliance with National, Provincial and Local legislation and regulations as well as the conditions of the various Records of Decision, Environmental Authorisations Licenses, Permits and Environmental Management Programme or Plans applicable to the Project. Application of weeds and alien invasive controlling herbicides to prevent re-growth.</p> <p>5. To perform Physical Control Method: Removal by hand or mechanical methods (e.g., cutting, digging, or trapping). Habitat modification or restoration to reduce species' success. Controlled burning to stimulate seed germination and further control.</p> <p>6. Chemical Control: Use of approved herbicides, or other chemicals, adjuvants, identification colourants (ensure compliance with safety and environmental regulations).</p> <p>7. Integrated Management: Combination of methods suited to specific species and contexts. Rotational or timed applications to minimize environmental impacts.</p>				
--	---	--	--	--	--

Reference No: QA/QC 002	Reference Rev No:	Date: 2023/03/01	Page 28 of 64
--------------------------------	-------------------	------------------	---------------

Controlled Disclosure

When downloaded from the document management system, this document is uncontrolled and the responsibility rests with the user to ensure it is in line with the authorized version on the system. No part of this document may be reproduced in any manner or form by third parties without the written consent of Eskom Holdings SOC Ltd, © copyright Eskom Holdings SOC Ltd, Reg No 2002/015527/30

	MATLA POWER STATION SCOPE OF WORK	Document Identifier	14593	Rev	7
		Effective Date	October 2024		
		Review Date	October 2027		

	<p>8. Deliverables Monitoring & Reporting</p> <ul style="list-style-type: none"> • Progress Reports: The contractor to provide daily, weekly and monthly progress updates reports inclusive of photographic evidence of work completed, including the effectiveness of the poison used (before, during and after pictures – sequence of events) and include data on species populations, areas treated, costs, and effectiveness report to client. • Monthly contract progress and compliance meetings to be undertaken to track the progress of works, inclusive of presentations by the contactor on the progress of works, challenges and successes in relation to the program. • A herbicide register must be updated as and when it is used and accurate calculations for dosages must be used. • Ensure that all safety, health and Environmental incidents are reported within 24 hours to Eskom Environmental Officer. • All non-conformities and incidents are reported to Eskom Environmental Officer within 24 hours or end of shift. • All chemicals (Herbicides, Diesel etc.) must have an appropriate brand-specific 16-point Safety Data Sheet. • The herbicide register must be maintained and updated for the duration of the project. 			
--	---	--	--	--

Reference No: QA/QC 002	Reference Rev No:	Date: 2023/03/01	Page 29 of 64
--------------------------------	-------------------	------------------	---------------

Controlled Disclosure

When downloaded from the document management system, this document is uncontrolled and the responsibility rests with the user to ensure it is in line with the authorized version on the system. No part of this document may be reproduced in any manner or form by third parties without the written consent of Eskom Holdings SOC Ltd, © copyright Eskom Holdings SOC Ltd, Reg No 2002/015527/30

	MATLA POWER STATION SCOPE OF WORK	Document Identifier	14593	Rev	7
		Effective Date	October 2024		
		Review Date	October 2027		

	<ul style="list-style-type: none"> Comply with the site-specific requirements (e.g., policies, procedures, regulations etc.) as stipulated by Eskom. Ensure that all records relating to monitoring and auditing are kept on site and made available for inspection to any relevant or competent authority in respect to the development of the project. <p>9. Working Times: Alien Invasive Species Team will be required onsite on a fulltime basis unless otherwise communicated and agreed with the Employer’s Agent. The Supplier will be required to provide timesheet as per the contract and submit these to the Employer’s Agent for acceptance at the end of each month. Signed records must be submitted to contract manager as part of the backup for assessing amount due for the month.</p> <p>10. Preliminary and Generals The supplier must provide AIS team with all site risk based required personal protective wear i.e., hardhat, safety glasses, dust mask, reflective vest, safety boots and ear plugs. The supplier must provide staff with working tools such as a vehicle/s (LDV’s, Tractor, trailer/s etc.)</p>		
--	---	--	--

Reference No: QA/QC 002	Reference Rev No:	Date: 2023/03/01	Page 30 of 64
--------------------------------	-------------------	------------------	---------------

Controlled Disclosure

When downloaded from the document management system, this document is uncontrolled and the responsibility rests with the user to ensure it is in line with the authorized version on the system. No part of this document may be reproduced in any manner or form by third parties without the written consent of Eskom Holdings SOC Ltd. © copyright Eskom Holdings SOC Ltd, Reg No 2002/015527/30

	MATLA POWER STATION SCOPE OF WORK	Document Identifier	14593	Rev	7
		Effective Date	October 2024		
		Review Date	October 2027		

	<p>11. General Conditions of the contract</p> <p>The contractor must comply with the Fertilizers, Farm feed Agricultural Remedies and Stock Remedies Act, no 36 of 1947. A team leader must be a registered Pest Control Operator with the act.</p> <p>According to Occupational health and Safety Act 85 of 1993, it is the employer’s duty to provide his/her employees personal protective equipment.</p> <p>The employees are expected to have the following PPE:</p> <ul style="list-style-type: none"> • Socks • Safety boots, long trousers & overalls • Hard hats, safety goggles/face shields • Chemical-resistant gloves (nitrile/rubber) • Respirators (half-mask with organic vapour cartridges) for herbicide application • Hearing protection (chainsaws/brush cutters) • High-visibility vests, sunscreen, first aid kits • Specialized chainsaw kit/gear. <p>12. Support Equipment & Safety:</p>			
--	---	--	--	--

Reference No: QA/QC 002	Reference Rev No:	Date: 2023/03/01	Page 31 of 64
--------------------------------	-------------------	------------------	---------------

Controlled Disclosure

When downloaded from the document management system, this document is uncontrolled and the responsibility rests with the user to ensure it is in line with the authorized version on the system. No part of this document may be reproduced in any manner or form by third parties without the written consent of Eskom Holdings SOC Ltd, © copyright Eskom Holdings SOC Ltd, Reg No 2002/015527/30

	MATLA POWER STATION SCOPE OF WORK	Document Identifier	14593	Rev	7
		Effective Date	October 2024		
		Review Date	October 2027		

	<ul style="list-style-type: none"> • PPE kits (for chainsaw, herbicide & manual crews) • Two-way radios (intrinsically safe near coal conveyors) • Spill kits (absorbent pads, bunded mixing trays) • Vehicle wash-down kits (to prevent seed spread) • First aid kits, fire extinguishers, fire beaters <p>13. Precautions and Penalties</p> <p>(a) No windbreaks, vegetation, or indigenous trees that are intended to remain may be damaged, poisoned or cleared. Any damage to non-invasive or indigenous vegetation or trees, which have not been specifically marked for clearing, will result in penalties to the Contractor.</p> <p>(b) All aliens to be cleared up to the site boundaries.</p> <p>(c) Contractor to bag and remove all litter within their working areas. Any litter must be removed from site by the Contractor daily. Waybills must be submitted for all refuse that is disposed of off-site.</p> <p>(d) The Contractor is to ensure that the supervisors have the knowledge and experience to identify indigenous vegetation.</p> <p>(e) It will be the responsibility of the Contractor to ensure that he or she is fully informed of the extent of all alien vegetation to be cleared.</p> <p>14. Minimum Equipment Required:</p>			
--	--	--	--	--

Reference No: QA/QC 002	Reference Rev No:	Date: 2023/03/01	Page 32 of 64
--------------------------------	-------------------	------------------	---------------

Controlled Disclosure

When downloaded from the document management system, this document is uncontrolled and the responsibility rests with the user to ensure it is in line with the authorized version on the system. No part of this document may be reproduced in any manner or form by third parties without the written consent of Eskom Holdings SOC Ltd. © copyright Eskom Holdings SOC Ltd. Reg No 2002/015527/30

	MATLA POWER STATION SCOPE OF WORK	Document Identifier	14593	Rev	7
		Effective Date	October 2024		
		Review Date	October 2027		

	<ul style="list-style-type: none"> • Brush cutters x 10, • Hand rakes x5 & forks x5 • Steel rakes x 5, • Drip tray x3, • Tractor with road worthy certificate, • 4×4 utility vehicle / bakkie (for crew & equipment transport) Chain saw x 5, • Trailer x1, • Tree Felling Road signs, • Felling ropes x10, • Woodchippers/mulchers (with chip containment to prevent re-sprouting) x1 • Minibus taxi x1, • Water bowser trailer with generator x1 – 2500L, • Tree poppers/weed wrenches (for young woody plants and for uprooting saplings) • Pickaxes, spades, hoes, crowbars • Winch/come-along, slings & tree felling wedges (for safe directional felling) • Stump grinders • Heavy-duty refuse bags for biomass handling • Cherry Picker (Contractor to provide rate/hour as and when required) 			
--	---	--	--	--

Reference No: QA/QC 002	Reference Rev No:	Date: 2023/03/01	Page 33 of 64
--------------------------------	-------------------	------------------	---------------

Controlled Disclosure

When downloaded from the document management system, this document is uncontrolled and the responsibility rests with the user to ensure it is in line with the authorized version on the system. No part of this document may be reproduced in any manner or form by third parties without the written consent of Eskom Holdings SOC Ltd, © copyright Eskom Holdings SOC Ltd, Reg No 2002/015527/30

	MATLA POWER STATION SCOPE OF WORK	Document Identifier	14593	Rev	7
		Effective Date	October 2024		
		Review Date	October 2027		

	<p>15. Biosecurity and stop re-infestation</p> <ul style="list-style-type: none"> - Vehicle wash-down kit (portable pump + hose) before leaving infested zones - Seed-containing waste bags (tie & remove), never move contaminated soil to clean areas <p>16. Assessment for Payment The Contractor and Eskom Environmental representative will do monthly inspections as part of assessment before any payment for work done can be made.</p>			
--	---	--	--	--

BILL OF MATERIAL

	Full description of Material/Spares/Equipment	Specifications of Material/Spares/Equipment	Stock No	Part Number	Required Quantity
	N/A	N/A	N/A	N/A	N/A

Reference No: QA/QC 002	Reference Rev No:	Date: 2023/03/01	Page 34 of 64
--------------------------------	-------------------	------------------	---------------

Controlled Disclosure

When downloaded from the document management system, this document is uncontrolled and the responsibility rests with the user to ensure it is in line with the authorized version on the system. No part of this document may be reproduced in any manner or form by third parties without the written consent of Eskom Holdings SOC Ltd. © copyright Eskom Holdings SOC Ltd. Reg No 2002/015527/30

	MATLA POWER STATION SCOPE OF WORK	Document Identifier	14593	Rev	7
		Effective Date	October 2024		
		Review Date	October 2027		

--	--	--	--	--	--

SCOPE COMPILATION REFERENCES				
SOURCE & Ref No.	Yes	No	N/A	Comments
Previous outage service reports			N/A	
Return to service data packages			N/A	
Maintenance Strategy with Rev number			N/A	
SAP defects (attach list as appendix)			N/A	
GHRMS (STEP) reports (Generation Heat Rate Management System)			N/A	
Online Condition Monitoring			N/A	
Pre-outage performance test results			N/A	
Post outage performance test results			N/A	
GPSS/ Plant Performance data on UCLF incurred			N/A	
OMS / IIRMS recommendations (Audits Reports)			N/A	
Risk controls (IRM system)			N/A	
Previous audits and reviews (e.g. ERAP)			N/A	
Engineering Change Requests (Projects)			N/A	

Reference No: QA/QC 002	Reference Rev No:	Date: 2023/03/01	Page 35 of 64
--------------------------------	-------------------	------------------	---------------

Controlled Disclosure

When downloaded from the document management system, this document is uncontrolled and the responsibility rests with the user to ensure it is in line with the authorized version on the system. No part of this document may be reproduced in any manner or form by third parties without the written consent of Eskom Holdings SOC Ltd. © copyright Eskom Holdings SOC Ltd. Reg No 2002/015527/30

	MATLA POWER STATION SCOPE OF WORK	Document Identifier	14593	Rev	7
		Effective Date	October 2024		
		Review Date	October 2027		

LOPP strategy reports			N/A	
URS			N/A	
Philosophy (Outage)			N/A	
Condition Monitoring Report			N/A	
VA/PHD Viewer trends			N/A	
Corrective Actions			N/A	
CARAB reports			N/A	
Statutory Requirements			N/A	
Grid code requirements			N/A	
Waivers and Exemptions			N/A	
Calibration requirements			N/A	
Previous Outage SOW variations			N/A	
Post Mortems Actions from previous outages			N/A	
Pre-Outage plant walks			N/A	
Risk based inspection (RBI) report			N/A	
Simulation, TOIs, OON, SI			N/A	

COMMENTS

Reference No: QA/QC 002	Reference Rev No:	Date: 2023/03/01	Page 36 of 64

Controlled Disclosure

When downloaded from the document management system, this document is uncontrolled and the responsibility rests with the user to ensure it is in line with the authorized version on the system. No part of this document may be reproduced in any manner or form by third parties without the written consent of Eskom Holdings SOC Ltd. © copyright Eskom Holdings SOC Ltd, Reg No 2002/015527/30

	MATLA POWER STATION SCOPE OF WORK	Document Identifier	14593	Rev	7
		Effective Date	October 2024		
		Review Date	October 2027		

ATTACHMENTS: DRAWINGS, SKETCHES, DIAGRAMS, INSTRUCTIONS, etc	
1	Annexure A: Horticulture, Alien and Invasive Control and Management Areal sizes
2	Annexure B: Assessment Map Areas for Payment
3	
4	
5	
6	
7	
8	
9	
10	

Reference No: QA/QC 002	Reference Rev No:	Date: 2023/03/01	Page 37 of 64
--------------------------------	-------------------	------------------	---------------

Controlled Disclosure

When downloaded from the document management system, this document is uncontrolled and the responsibility rests with the user to ensure it is in line with the authorized version on the system. No part of this document may be reproduced in any manner or form by third parties without the written consent of Eskom Holdings SOC Ltd, © copyright Eskom Holdings SOC Ltd, Reg No 2002/015527/30

	MATLA POWER STATION SCOPE OF WORK	Document Identifier	14593	Rev	7
		Effective Date	October 2024		
		Review Date	October 2027		

TECHNICAL EVALUATION CRITERIA

PRICE BREAKDOWN	POINTS
1x Site Manager: Qualifications and CV of the Horticulturist with a national diploma in horticulture/ Nature Conservation/ Environmental Management with >3 years practical experience	-Greater than 3 Years Experience: 20% -Less than 3 Years Experience: 15% -Less than 2 Years Experience: 5%
Proof of Similar Experience of Horticulture services and Alien and invasive removal and control (References) from companies with greater than 3 years	- Proof of Similar Experience (References) from companies with 3 years or greater than 3 years: 35% - Proof of Similar Experience (References) from companies with less than 3 years: 15% - Proof of Similar Experience (References) from companies with less than 2 years: 5%
10x brush cutter operators with certificate of training	- 10x brush cutter operators with certificate of training:10% - 5x brush cutter operators with certificate of training: 5%

Reference No: QA/QC 002	Reference Rev No:	Date: 2023/03/01	Page 38 of 64
--------------------------------	-------------------	------------------	---------------

Controlled Disclosure

When downloaded from the document management system, this document is uncontrolled and the responsibility rests with the user to ensure it is in line with the authorized version on the system. No part of this document may be reproduced in any manner or form by third parties without the written consent of Eskom Holdings SOC Ltd. © copyright Eskom Holdings SOC Ltd. Reg No 2002/015527/30

	MATLA POWER STATION SCOPE OF WORK	Document Identifier	14593	Rev	7
		Effective Date	October 2024		
		Review Date	October 2027		

A proposal detailing methods of Alien and invasive control for each species on the scope of work (covering removal and control method, disposal methods, including herbicides to be used and dosages)	- Acceptable proposal (Covering removal and control method, storage, disposal methods and chemical types, herbicides to be used – 30% - Acceptable proposal (Covering removal and control methods, storage and chemical types, herbicides to be used, but no disposal method – 20% - Unacceptable proposal- 10%
Material Safety Data Sheets for all chemicals, herbicides and substances to be used (not older than five years)	- Up to date- 5% - Older than 5 years- 0%
Minimum Threshold	75%

Gatekeeper

Pest Control Licence (The PCO licence holder and the weed control certificate must correspond).

PRICE LIST

Price breakdown	Unit of Measure	Quantity	Rate	Price Amount
63 x PPE Annually	Annually	3		
63 x Medicals	Annually	3		
1x Safety officer	Monthly	36		
2 x Assistant Safety officers	Monthly	36		

Reference No: QA/QC 002	Reference Rev No:	Date: 2023/03/01	Page 39 of 64
--------------------------------	-------------------	------------------	---------------

Controlled Disclosure

When downloaded from the document management system, this document is uncontrolled and the responsibility rests with the user to ensure it is in line with the authorized version on the system. No part of this document may be reproduced in any manner or form by third parties without the written consent of Eskom Holdings SOC Ltd, © copyright Eskom Holdings SOC Ltd, Reg No 2002/015527/30

	MATLA POWER STATION SCOPE OF WORK	Document Identifier	14593	Rev	7
		Effective Date	October 2024		
		Review Date	October 2027		

3 x Supervisor	Monthly	36		
1x Site Manager	Monthly	36		
1x Horticulturist	Monthly	36		
2x Pest control officer	Monthly	36		
3x Tractors drivers	Monthly	36		
5x Ride on mower operators	Number	36		
30x Brush cutter operators with certificate of training	Number	36		
15 x Gardeners /General workers	Number	36		
4x Employee transport drivers	Number	36		
Minimum Equipment Inventory Required	Unit of Measure	Quantity	Rate	Price Amount
2x LDV Bakkie	Monthly	36		
1x 4x4 LDV Bakkie	Monthly	36		
3x tractor 55 kw	Monthly	36		
1x tractor 45 kw	Monthly	36		
1x tipping trailer	Monthly	36		
3x water carts 500L	Monthly	36		
2x Mount to tractor 1.5 slasher	Monthly	36		
30x brush cutters	Monthly	36		
10x shears (scissors for pruning)	Monthly	36		
8x push mowers	Monthly	36		

Reference No: QA/QC 002	Reference Rev No:	Date: 2023/03/01	Page 40 of 64
--------------------------------	-------------------	------------------	---------------

Controlled Disclosure

When downloaded from the document management system, this document is uncontrolled and the responsibility rests with the user to ensure it is in line with the authorized version on the system. No part of this document may be reproduced in any manner or form by third parties without the written consent of Eskom Holdings SOC Ltd, © copyright Eskom Holdings SOC Ltd, Reg No 2002/015527/30

	MATLA POWER STATION SCOPE OF WORK	Document Identifier	14593	Rev	7
		Effective Date	October 2024		
		Review Date	October 2027		

5x Ride on mowers	Monthly	36		
8x Leave blower/vacuum	Monthly	36		
6x chainsaw (for removal of fallen trees)	Monthly	36		
3x road sweepers (to be mounted on tractors)	Monthly	36		
Consumables(Fertilizers, Herbicides, Fuel, Rakes and brooms, etc)	Monthly	36		
Miscellaneous equipment (e.g Cherry Picker, mulcher, wood chipper)	Monthly	36		
4x 18-seater Transportation of employees	Monthly	36		

N.B The Local taxi association to be used for Transportation of employees

Reference No: QA/QC 002	Reference Rev No:	Date: 2023/03/01	Page 41 of 64
--------------------------------	-------------------	------------------	---------------

Controlled Disclosure

When downloaded from the document management system, this document is uncontrolled and the responsibility rests with the user to ensure it is in line with the authorized version on the system. No part of this document may be reproduced in any manner or form by third parties without the written consent of Eskom Holdings SOC Ltd. © copyright Eskom Holdings SOC Ltd. Reg No 2002/015527/30

	MATLA POWER STATION SCOPE OF WORK	Document Identifier	14593	Rev	7
		Effective Date	October 2024		
		Review Date	October 2027		

Annexure A

Horticulture, Alien and Invasive Control and Management Areal sizes:

Raw Water Dam Areal sizes

Sewage Treatment Plant areal size

Reference No: QA/QC 002	Reference Rev No:	Date: 2023/03/01	Page 42 of 64
--------------------------------	-------------------	------------------	---------------

Controlled Disclosure

When downloaded from the document management system, this document is uncontrolled and the responsibility rests with the user to ensure it is in line with the authorized version on the system. No part of this document may be reproduced in any manner or form by third parties without the written consent of Eskom Holdings SOC Ltd. © copyright Eskom Holdings SOC Ltd. Reg No 2002/015527/30



MATLA POWER STATION SCOPE OF WORK

Document Identifier	14593	Rev	7
Effective Date	October 2024		
Review Date	October 2027		



Power Station Areal Sizes



Fire Break Areas

Reference No: QA/QC 002	Reference Rev No:	Date: 2023/03/01	Page 43 of 64
--------------------------------	-------------------	------------------	---------------

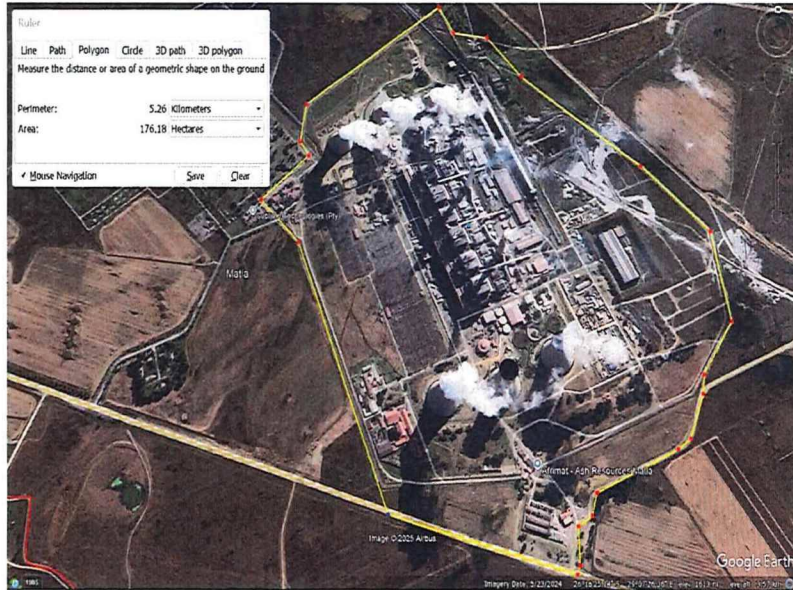
Controlled Disclosure

When downloaded from the document management system, this document is uncontrolled and the responsibility rests with the user to ensure it is in line with the authorized version on the system. No part of this document may be reproduced in any manner or form by third parties without the written consent of Eskom Holdings SOC Ltd. © copyright Eskom Holdings SOC Ltd. Reg No 2002/015527/30



MATLA POWER STATION SCOPE OF WORK

Document Identifier	14593	Rev	7
Effective Date	October 2024		
Review Date	October 2027		



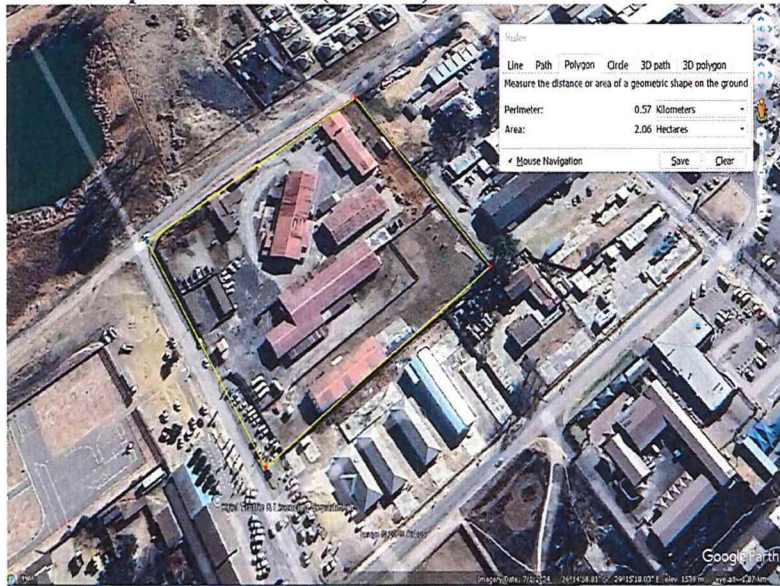
Reference No: QA/QC 002	Reference Rev No:	Date: 2023/03/01	Page 44 of 64
--------------------------------	-------------------	------------------	---------------

Controlled Disclosure

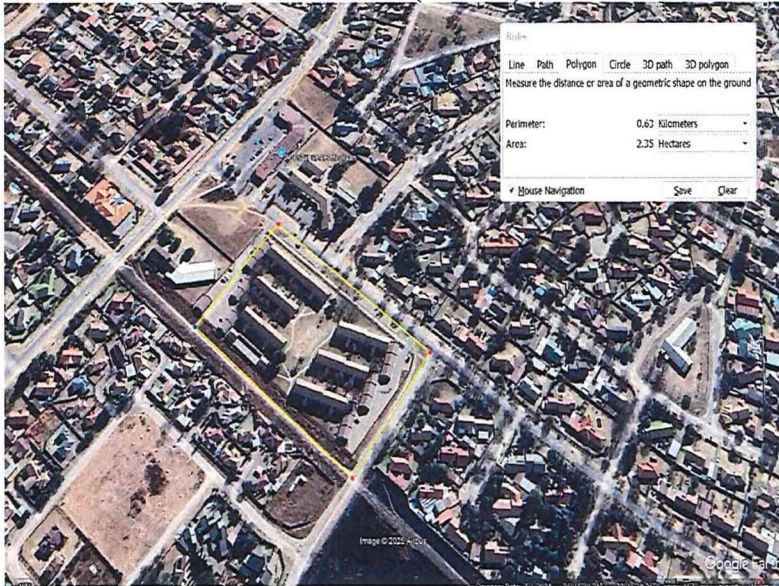
When downloaded from the document management system, this document is uncontrolled and the responsibility rests with the user to ensure it is in line with the authorized version on the system. No part of this document may be reproduced in any manner or form by third parties without the written consent of Eskom Holdings SOC Ltd. © copyright Eskom Holdings SOC Ltd. Reg No 2002/015527/30

	MATLA POWER STATION SCOPE OF WORK	Document Identifier	14593	Rev	7	
		Effective Date	October 2024			
		Review Date	October 2027			

The total area at Kriel properties highlighted below:
Kriel Properties Offices (2.06 ha)



Kriel Town: Bokmakierie Flats (2.35 ha)



Reference No: QA/QC 002	Reference Rev No:	Date: 2023/03/01	Page 45 of 64
--------------------------------	-------------------	------------------	---------------

Controlled Disclosure

When downloaded from the document management system, this document is uncontrolled and the responsibility rests with the user to ensure it is in line with the authorized version on the system. No part of this document may be reproduced in any manner or form by third parties without the written consent of Eskom Holdings SOC Ltd, © copyright Eskom Holdings SOC Ltd, Reg No 2002/015527/30



MATLA POWER STATION

SCOPE OF WORK

Document Identifier	14593	Rev	7
Effective Date	October 2024		
Review Date	October 2027		

Kriel Town: Batchelor Flats (0,82 ha)



Reference No: QA/QC 002	Reference Rev No:	Date: 2023/03/01	Page 46 of 64
--------------------------------	-------------------	------------------	---------------

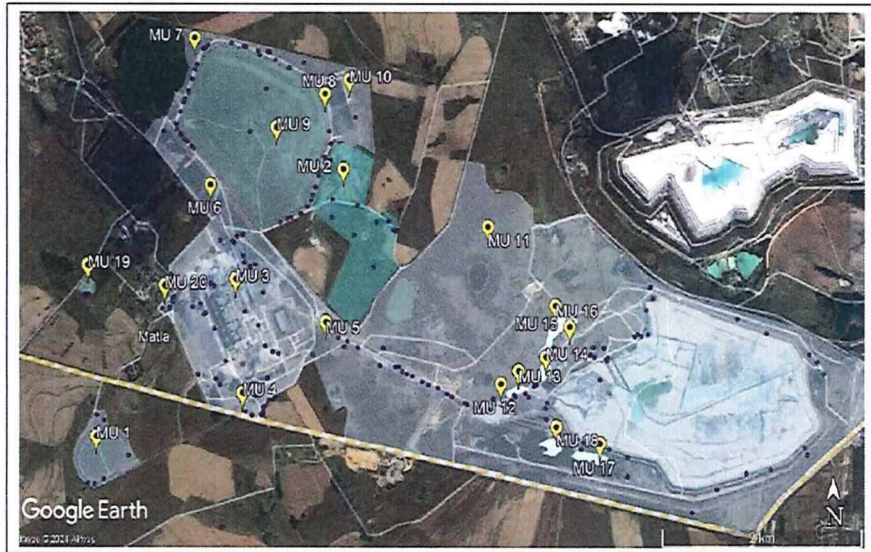
Controlled Disclosure

When downloaded from the document management system, this document is uncontrolled and the responsibility rests with the user to ensure it is in line with the authorized version on the system. No part of this document may be reproduced in any manner or form by third parties without the written consent of Eskom Holdings SOC Ltd. © copyright Eskom Holdings SOC Ltd. Reg No 2002/015527/30

	MATLA POWER STATION SCOPE OF WORK		Document Identifier	14593	Rev	7
			Effective Date	October 2024		
			Review Date	October 2027		

Matla Power station Alien and Invasive Management Areas:

3. Delineation of management units / areas



Management Units (MU)

- MU 1 (Raw water dams & shooting range) – 28.9 Ha
- MU 2 (Unit 7 dam, old functions facility area) – 79.7 Ha
- MU 3 (Inside the Power Station security Fence) – 160 Ha
- MU 4 (South – Outside the main entrance) – 14 Ha
- MU 5 (East – Area outside PS security fence) – 24.4 Ha
- MU 6 (Eucalyptus plantation, West of Old Ash dam) – 35.6 Ha
- MU 7 (Northwest of Old Ash dam) – 11.9 Ha
- MU 8 (Water canal area around Old Ash dam) – 22.5 Ha
- MU 9 (Old Ash Dam Top area) – 159 Ha
- MU 10 (Pump Station area East of Old Ash Dam) – 43.9 Ha
- MU 11 (New Ash Dam Greater Area) – 1027 Ha
- MU 12 (Populus x canensis A area) – 0.39 Ha
- MU 13 (Acacia dealbata A forest) – 1.23 Ha
- MU 14 (Populus x canensis B area) – 1.52 Ha
- MU 15 (Acacia dealbata B area) – 3.1 Ha
- MU 16 (Eucalyptus macarthurii) – 5.11 Ha
- MU 17 (Cortaderia area A South dam island) – 2.98 Ha
- MU 18 (Cortaderia area B South dam island) – 2.97 Ha
- MU 19 (Sewage area) – 2.15 Ha
- MU 20 (Tandanani) – 1 Ha

Alien and Invader species areal sizes and distribution

Reference No: QA/QC 002	Reference Rev No:	Date: 2023/03/01	Page 47 of 64
--------------------------------	-------------------	------------------	---------------

Controlled Disclosure

When downloaded from the document management system, this document is uncontrolled and the responsibility rests with the user to ensure it is in line with the authorized version on the system. No part of this document may be reproduced in any manner or form by third parties without the written consent of Eskom Holdings SOC Ltd. © copyright Eskom Holdings SOC Ltd, Reg No 2002/015527/30

	MATLA POWER STATION SCOPE OF WORK		Document Identifier 14593	Rev 7
			Effective Date October 2024	
			Review Date October 2027	

	Management Units	Ha	Individual Plants Species (quantity)
Invasive Category 1	MU 9 (Old Ash Dam Top area)	159 Ha	Tamarisk chinensis x19126 (5 – 10 cm)
			<i>Alianthus altissima</i> : x1730 (30 – 60 cm)
			Cortaderia selloana: x1690 (Grass)
			<i>Acacia dealbata</i> : x1313 (10 – 20 cm)
			<i>Cestrum lavigatum</i> : x186 (10 – 15 cm)
			<i>Robinia pseudoacacia</i> : x130 (60 – 90 cm)
			<i>Populus nigra</i> : x50 (6 – 20 cm)
			<i>Prunus persica</i> : x37 (12 – 20 cm)
			<i>Gleditsia tricanthos</i> : x26 (30 – 90 cm)
			<i>Morus alba</i> : x3 (50 – 60 cm)
			<i>Nicotiana glauca</i> : x2 (5 – 10 cm)
			<i>Acacia melanoxylon</i> : x1 (10 – 40 cm)
			<i>Rubus cuneifolius</i> : x1 (1 – 2 cm)
	MU 13 (Acacia dealbata A forest)	1.23 Ha	<i>Acacia dealbata</i> (10 – 20 cm)
	MU 14 (Populus x Canensis B area)	1.52 Ha	<i>Populus x canensis</i> (35 – 50 cm)
	MU 16 (Acacia dealbata)	5 Ha	<i>Acacia dealbata</i> (10 – 20 cm)

Reference No: QA/QC 002	Reference Rev No:	Date: 2023/03/01	Page 48 of 64
--------------------------------	-------------------	------------------	---------------

Controlled Disclosure

When downloaded from the document management system, this document is uncontrolled and the responsibility rests with the user to ensure it is in line with the authorized version on the system. No part of this document may be reproduced in any manner or form by third parties without the written consent of Eskom Holdings SOC Ltd. © copyright Eskom Holdings SOC Ltd. Reg No 2002/015527/30

	MATLA POWER STATION SCOPE OF WORK		Document Identifier 14593	Rev 7
			Effective Date October 2024	
			Review Date October 2027	

	MU 17 & 18 (Cortaderia area A & B South dam island)	5.95 Ha	<i>Cortaderia selloana</i> (Grass)
Invasive Category 2	MU 2 (Unit 7 dam, old functions facility area)	79.7 Ha	<i>Eucalyptus camuldulensis</i> : x1000 (60 – 100cm)
			<i>Robinia pseudoacacia</i> : x300 (60 – 90 cm)
			<i>Tamarisk chinensis</i> : x300 (5 – 10 cm)
	MU 8 (Water canal area around Old Ash Dam)	43.9 Ha	<i>Populus nigra "italica"</i> : x1200 (6 – 20 cm)
			<i>Fraxinus americana</i> : x67 (30 – 60 cm)
			<i>Cortaderia selloana</i> : x59 (Grass)
			<i>Acer negundo</i> : x56 (30 – 60 cm)
			<i>Eucalyptus camuldulensis</i> : x5 (60 – 100cm)
			<i>Casuarina cunninghamiana</i> : x3 (50 – 150 cm)
			<i>Celtis sinensis</i> : x3 (30 – 60 cm)
<i>Tamarisk chinensis</i> : x3 (5 – 10 cm)			
	MU 12 (Populus x Canensis Area)	0.39 Ha	<i>Populus x canensis</i> (35 – 50 cm)
		160 Ha	<i>Cortaderia selloana</i> x32 (Grass)

Reference No: QA/QC 002	Reference Rev No:	Date: 2023/03/01	Page 49 of 64
--------------------------------	-------------------	------------------	---------------

Controlled Disclosure

When downloaded from the document management system, this document is uncontrolled and the responsibility rests with the user to ensure it is in line with the authorized version on the system. No part of this document may be reproduced in any manner or form by third parties without the written consent of Eskom Holdings SOC Ltd, © copyright Eskom Holdings SOC Ltd, Reg No 2002/015527/30

	MATLA POWER STATION SCOPE OF WORK		Document Identifier	14593	Rev	7
			Effective Date	October 2024		
			Review Date	October 2027		

Invasive Category 3	MU 3 (Inside the Power Station Boundary)		<i>Solanum mauritianum</i> x1 (15 – 20 cm)
			<i>Robinia pseudoacacia</i> x84 (60 – 90 cm)
			<i>Acacia melanoxylon</i> x61 (60 – 80 cm)
			<i>Tamarisk chinensis</i> x60 (5 – 10 cm)
			<i>Acacia dealbata</i> x12 (10 – 20 cm)
	MU 6 (Eucalyptus plantation, West of Old Ash Dam)	43.9 Ha	<i>Eucalyptus plantation</i> (60 – 120 cm)

Reference No: QA/QC 002	Reference Rev No:	Date: 2023/03/01	Page 50 of 64
--------------------------------	--------------------------	-------------------------	----------------------

Controlled Disclosure

When downloaded from the document management system, this document is uncontrolled and the responsibility rests with the user to ensure it is in line with the authorized version on the system. No part of this document may be reproduced in any manner or form by third parties without the written consent of Eskom Holdings SOC Ltd, © copyright Eskom Holdings SOC Ltd. Reg No 2002/015527/30

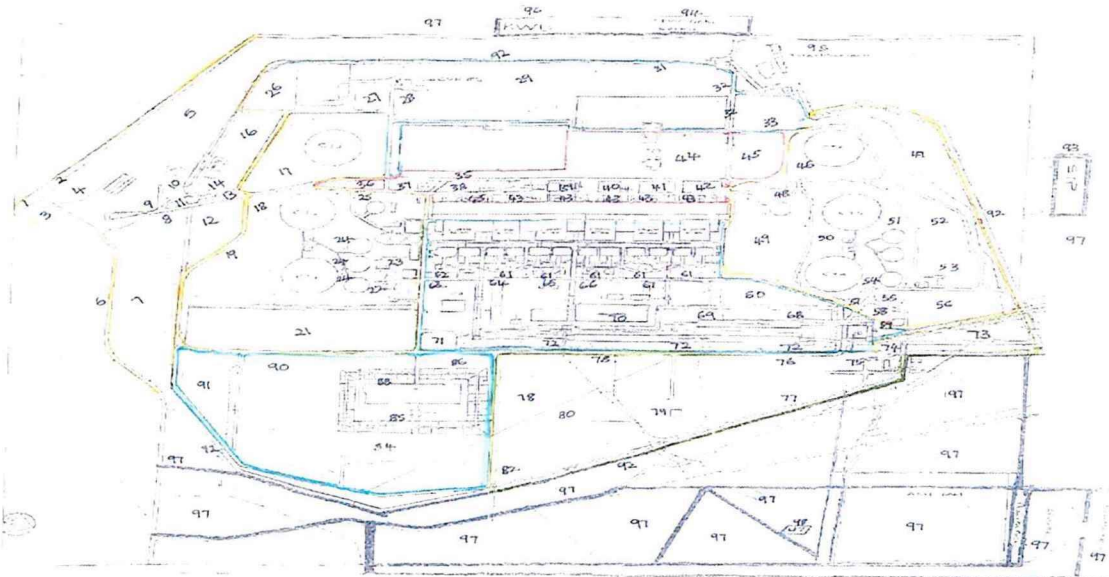


MATLA POWER STATION

SCOPE OF WORK

Document Identifier	14593	Rev	7
Effective Date	October 2024		
Review Date	October 2027		

Annexure B Assessment Map Areas



Reference No: QA/QC 002	Reference Rev No:	Date: 2023/03/01	Page 51 of 64
--------------------------------	-------------------	------------------	---------------

Controlled Disclosure

When downloaded from the document management system, this document is uncontrolled and the responsibility rests with the user to ensure it is in line with the authorized version on the system. No part of this document may be reproduced in any manner or form by third parties without the written consent of Eskom Holdings SOC Ltd, © copyright Eskom Holdings SOC Ltd, Reg No 2002/015527/30

	MATLA POWER STATION SCOPE OF WORK	Document Identifier	14593	Rev	7
		Effective Date	October 2024		
		Review Date	October 2027		

ASSESSMENT CRITERIA

Type of area	Assessment criteria
Veld grass	Cut short as per interval requirement (the length of grass should not be more than 15 cm at any given time). No tyre marks or wind rows left unattended after wet conditions.
Lawn	Lawn must be always weed free. Cut short as per interval requirement (the length of grass should not be more than 3cm at any given time). No tyre marks or wind rows left unattended after wet conditions.
Road edges	Always maintained cleaned. Safety at road corners – removal of long grass (the length of grass should not be more than 3cm at any given time). Treat and replace ranch fencing poles on deterioration (i.e. towards the mess).
Parking	No weeds growing. Litter collection. Sweeping.
Gravel	No weeds growing. Surface levelled. Litter collection.
Trees	Pruned. Trimmed. No de-barking during brush cutting.
Concrete	No weeds growing. Litter collection.
Beds	Weed free. No foreign objects. Soil levelled. Groundcovers cut back. Plants in good condition. Pleasant appearance

Reference No: QA/QC 002	Reference Rev No:	Date: 2023/03/01	Page 52 of 64
--------------------------------	-------------------	------------------	---------------

Controlled Disclosure

When downloaded from the document management system, this document is uncontrolled and the responsibility rests with the user to ensure it is in line with the authorized version on the system. No part of this document may be reproduced in any manner or form by third parties without the written consent of Eskom Holdings SOC Ltd. © copyright Eskom Holdings SOC Ltd. Reg No 2002/015527/30

	MATLA POWER STATION SCOPE OF WORK	Document Identifier	14593	Rev	7
		Effective Date	October 2024		
		Review Date	October 2027		

Flower boxes	Weed free. No foreign objects. Soil levelled. Groundcovers cut back. Plants in good condition. Pleasant appearance
Water trenches and grass covered ditches	Weed free, concrete trenches must be unblocked, with no soil and litter. Grass ditches must be cut very short, and litter must be removed.
Other structures	Weed free.
Pipes	Cut grass alongside pipes – i meter each side from the pipes (the length of grass should not be more than 3cm at any given time). Spray with herbicide. Should always be weed free underneath the pipes.
Scarify lawn	In winter. Areas as per client request. Successful recovery due to proper aftercare
Security fence procedure	The parameter fence area should be weed free at all times, clear cut / herbicide application 3 meters both sides (inside and outside the fence) at all times. No grass should grow within the fence. Signs of erosion must be reported to security

Areas for specific maintenance. Refer to attached map and codes legend.

A = area number (refer to map annexure c)

B = frequency

Reference No: QA/QC 002	Reference Rev No:	Date: 2023/03/01	Page 53 of 64
--------------------------------	-------------------	------------------	---------------

Controlled Disclosure

When downloaded from the document management system, this document is uncontrolled and the responsibility rests with the user to ensure it is in line with the authorized version on the system. No part of this document may be reproduced in any manner or form by third parties without the written consent of Eskom Holdings SOC Ltd, © copyright Eskom Holdings SOC Ltd, Reg No 2002/015527/30

	MATLA POWER STATION SCOPE OF WORK	Document Identifier 14593	Rev 7
		Effective Date October 2024	
		Review Date October 2027	

C = area type or terrain

Area requirements codes

Type of area or terrain (column c)		Maintenance frequency (column b)	
1	Veld grass	1	Once a week
2	Lawn	2	Twice per month (ever second week)
3	Road edges	3	Once per month
4	Parking	4	As per request (4 x year)
5	Gravel		
6	Trees		
7	Concrete		
8	Beds		
9	Flower boxes		
10	Water trenches		
11	Other structures		
12	Pipes		
13	Scarify lawn		
14	Security fence procedure		

Reference No: QA/QC 002	Reference Rev No:	Date: 2023/03/01	Page 54 of 64
--------------------------------	-------------------	------------------	---------------

Controlled Disclosure

When downloaded from the document management system, this document is uncontrolled and the responsibility rests with the user to ensure it is in line with the authorized version on the system. No part of this document may be reproduced in any manner or form by third parties without the written consent of Eskom Holdings SOC Ltd. © copyright Eskom Holdings SOC Ltd. Reg No 2002/015527/30

	MATLA POWER STATION SCOPE OF WORK	Document Identifier	14593	Rev	7
		Effective Date	October 2024		
		Review Date	October 2027		

ASSESSMENT AREAS FOR PAYMENT:

Area Description	Area No.	Frequency (column b)	Terrain (column c)
Main entrance road corner	1	1	1,3
Main entrance road corner	2	1	1,3
Main entrance	3	1	2,6,3
Main entrance	4	1	2,6
Delmas Road	5	3	1,3
Perimeter fence	6	3	Kriel / Matla Road (next to farmer's area)
Kriel road	7	3	1,3, 10
Main gate	8	1	2,6,3,4
Main gate	9	1	2,3,6,9
Main gate	10	1	2,3,6,8, 9,11

Reference No: QA/QC 002	Reference Rev No:	Date: 2023/03/01	Page 55 of 64
--------------------------------	-------------------	------------------	---------------

Controlled Disclosure

When downloaded from the document management system, this document is uncontrolled and the responsibility rests with the user to ensure it is in line with the authorized version on the system. No part of this document may be reproduced in any manner or form by third parties without the written consent of Eskom Holdings SOC Ltd, © copyright Eskom Holdings SOC Ltd, Reg No 2002/015527/30

	MATLA POWER STATION SCOPE OF WORK	Document Identifier	14593	Rev	7
		Effective Date	October 2024		
		Review Date	October 2027		

Main gate	11	1	3,6,8
Grass E of access control building	12	1	1,6,12
Flower island	13	1	3,6,8
Grass W of access control building	14	1	2,3,6
*Kriel Town: Batchelor Flats	15	1	1,2,3,4,5,6,7,9,11
Helipad	16	2	1,2,3,5,6
Coolin tower 3	17	1	1,6,12
Cooling tower 2	18	1	1,6,10,12
Cooling tower 1	19	2	1,6,10,12
*Kriel Town: Bokmakierie Flats outside fence area	20	2	1,2,3,4,5,6,7,9,11
Coal staithe 1	21	1	1,10,12
medical centre	22	1	1,2,3,4,7,8,12
Chemical services	23	1	2,3,4,5,7,11,12
South Clarifiers	24	1	1,2,5,7,12
S cooling water pumphouse	25	1	5,7,11,12
Behind Rotek workshop	26	2	1, 12

Reference No: QA/QC 002	Reference Rev No:	Date: 2023/03/01	Page 56 of 64
--------------------------------	-------------------	------------------	---------------

Controlled Disclosure

When downloaded from the document management system, this document is uncontrolled and the responsibility rests with the user to ensure it is in line with the authorized version on the system. No part of this document may be reproduced in any manner or form by third parties without the written consent of Eskom Holdings SOC Ltd, © copyright Eskom Holdings SOC Ltd, Reg No 2002/015527/30

	MATLA POWER STATION SCOPE OF WORK		Document Identifier 14593	Rev 7
			Effective Date October 2024	
			Review Date October 2027	

Construction store and workshop	27	1	1,3,6
services building	28	1	1,3,4,6,8
Services	29	2	1, 12
*Kriel Town: Bokmakierie Flats front	30	2	1,2,3,4,5,6,7,9,11
Services	31	2	1,12
Road to Thandanani	32	1	3,4,5,6,10,12
opposite portable water storage tanks	33	2	1,2,3,5,6,10,12
S of HV yard	34	2	1,2,3,5,6,11
HV yard next to road	35	1	2,3,5,10
Big screen	36	1	2,3,6,8,11,13
Station transformer	37	1	2,3,6,11
Engineering	38	1	5,9
Admin building	39	1	2,4,6,8,11
Toilets	40	1	2,4,6,8
Grass oppo U5	41	1	2,3,4,6

Reference No: QA/QC 002	Reference Rev No:	Date: 2023/03/01	Page 57 of 64
--------------------------------	-------------------	------------------	---------------

Controlled Disclosure

When downloaded from the document management system, this document is uncontrolled and the responsibility rests with the user to ensure it is in line with the authorized version on the system. No part of this document may be reproduced in any manner or form by third parties without the written consent of Eskom Holdings SOC Ltd. © copyright Eskom Holdings SOC Ltd. Reg No 2002/015527/30

	MATLA POWER STATION SCOPE OF WORK		Document Identifier 14593	Rev 7
			Effective Date October 2024	
			Review Date October 2027	

Grass oppo U6	42	1	2,3,4,6,11
Transformers	43	3	Transformer Yard, 3,5,7,11
Site mess	44	1	2,3,4,6,8,9
CT6 contractor yard	45	1	1,2,3,4,5,6,10,12,13
Cooling tower 6	46	2	1,3,6,11,12,13
Station drains toward Sublime	47	2	1,3,5,10
North cooling water pumphouse	48	1	3,4,5,7,11,12,13
Slurry plant	49	1	1,3,5,6,7,12
Cooling tower 5	50	1	1,11
N clarifiers	51	1	1,3,11,12
Driving range	52	1	1,11,12
Tee off	53	1	1,11,12
Cooling tower 4	54	1	2,3,6,10,12
Opposite North clarifiers	55	1	1,6,3
Next to conveyor belt	56	2	1,11,12
Ash pipelines	57	1	1,3,6,11

Reference No: QA/QC 002	Reference Rev No:	Date: 2023/03/01	Page 58 of 64
--------------------------------	-------------------	------------------	---------------

Controlled Disclosure

When downloaded from the document management system, this document is uncontrolled and the responsibility rests with the user to ensure it is in line with the authorized version on the system. No part of this document may be reproduced in any manner or form by third parties without the written consent of Eskom Holdings SOC Ltd. © copyright Eskom Holdings SOC Ltd. Reg No 2002/015527/30

	MATLA POWER STATION SCOPE OF WORK		Document Identifier 14593	Rev 7
			Effective Date October 2024	
			Review Date October 2027	

Coal plant	58	1	1,3,11,12
SWR head tank	59	2	2,3,12, Rehabilitation
Slurry plant silos	60	1	1,2,11,12,13, Rehabilitation
Ash & dust plant U1-6	61	1	2,3,6
Ash & dust plant offices	62	1	2,3,6
Transport	63	1	3,6,12
Maintenance workshop	64	1	3,6,8,12
Offices	65	1	6,8,12
Sewage sump	66	1	6,8,9,12
Stores yard	67	1	2,3,12
Coal staithe 2	68	1	1,2,3,5,11,12
Coal staithes & kraal dam slope	69	1	1,2,3,5,11,12
Coal plant offices	70	1	1,2,3,5,11,12
Soccer field opposite transport	71	1	2,3,6,10,12
Opposite strategic stores	72	1	2,3,6,10,12
Security to the mine	73	2	1,11,12

Reference No: QA/QC 002	Reference Rev No:	Date: 2023/03/01	Page 59 of 64
--------------------------------	-------------------	------------------	---------------

Controlled Disclosure

When downloaded from the document management system, this document is uncontrolled and the responsibility rests with the user to ensure it is in line with the authorized version on the system. No part of this document may be reproduced in any manner or form by third parties without the written consent of Eskom Holdings SOC Ltd. © copyright Eskom Holdings SOC Ltd. Reg No 2002/015527/30

	MATLA POWER STATION SCOPE OF WORK		Document Identifier 14593	Rev 7
			Effective Date October 2024	
			Review Date October 2027	

Spaghetti pipes	74	1	1,2,3,5,7,12
Horticulture (inside and outside fence)	75	1	1,6
Ash pipelines	76	2	1,5,10,12
Helipad	77	3	1,11
Contractors	78	1	1,2,3,4,5,10,11
S station drains	79	1	1,11,12
Back of the station	80	3	1,6
*Kriel Town: Bokmakierie Flats backyard	81	3	1,2,3,4,5,6,7,9,11
Back of the station	82	3	1,5
*Kriel Town: Eskom Offices outside fence	83	3	1,2,3,4,5,6,7,9,11
Back of the station	84	4	1,5
Strategic stores slope	85	3	1,10
Strategic stores offices	86	1	1,6,10
*Kriel Town: Eskom Offices front	87	1	1,2,3,4,5,6,7,9,11

Reference No: QA/QC 002	Reference Rev No:	Date: 2023/03/01	Page 60 of 64
--------------------------------	-------------------	------------------	---------------

Controlled Disclosure

When downloaded from the document management system, this document is uncontrolled and the responsibility rests with the user to ensure it is in line with the authorized version on the system. No part of this document may be reproduced in any manner or form by third parties without the written consent of Eskom Holdings SOC Ltd. © copyright Eskom Holdings SOC Ltd. Reg No 2002/015527/30

	MATLA POWER STATION SCOPE OF WORK		Document Identifier 14593	Rev 7
			Effective Date October 2024	
			Review Date October 2027	

Strategic stores grounds	88	1	1,2,3,6
*Kriel Town: Eskom Offices backyard	89	4	1,2,3,4,5,6,7,9,11
Back of the station	91	3	1,3,6,10
Salvage yard	90	2	1,6
Security fence	92	3	5
STP	93	1	1,2,3,4,6,7,8,10,11,12
Shooting range	94	2	1,3,4,5,6,10,11
Thandanani	95	1	2,3,4,5,6,7,8,9,11
RWD sampling area	96	3	1,10
Outside station - old ash dam, STP, RWD slope,	97	4	Fire breaks, bush clearing, reeds removal
Rotek offices in the ash dams, Sampling points - U7 / SWR /AWR/ boreholes & other sampling points from Chemical services (area 5 x5 meters for each area)	98	2	1,2,3,5,6,7,10,11,12

Reference No: QA/QC 002	Reference Rev No:	Date: 2023/03/01	Page 61 of 64
--------------------------------	-------------------	------------------	---------------

Controlled Disclosure

When downloaded from the document management system, this document is uncontrolled and the responsibility rests with the user to ensure it is in line with the authorized version on the system. No part of this document may be reproduced in any manner or form by third parties without the written consent of Eskom Holdings SOC Ltd, © copyright Eskom Holdings SOC Ltd. Reg No 2002/015527/30

	MATLA POWER STATION SCOPE OF WORK		Document Identifier 14593	Rev 7
			Effective Date October 2024	
			Review Date October 2027	

Manpower availability	99	2	All areas
Equipment Inspection	100	3	not less than 80% available as per the maintenance and inspection check sheet

Reference No: QA/QC 002	Reference Rev No:	Date: 2023/03/01	Page 62 of 64
--------------------------------	-------------------	------------------	---------------

Controlled Disclosure

When downloaded from the document management system, this document is uncontrolled and the responsibility rests with the user to ensure it is in line with the authorized version on the system. No part of this document may be reproduced in any manner or form by third parties without the written consent of Eskom Holdings SOC Ltd, © copyright Eskom Holdings SOC Ltd, Reg No 2002/015527/30

	MATLA POWER STATION SCOPE OF WORK	Document Identifier	14593	Rev	7
		Effective Date	October 2024		
		Review Date	October 2027		

Supervisors at the Station:

Supervisor	Area name	Area no.	Estimated areas in Ha
Supervisor 1	Entrance	1 – 16	39 ha
Supervisor 2	South cooling towers	17 – 25	38 ha
Supervisor 3	Services area	26 – 34	49 ha
Supervisor 4	Admin	35 – 45	24 ha
Supervisor 5	North cooling towers	46 – 59	29 ha
Supervisor 6	Ash and coal	60 – 72	37 ha
Supervisor 7	Station drain	73 – 82	31 ha
Supervisor 8	Strategic and back	83 – 90	23 ha
Supervisor 9	SSST	91 – 95	Security – 6 km Sewage plant – Shooting range – Thandanani -
Supervisor 10	Ash dam areas, sampling points equipment's and manpower numbers	- 100	ha {50 x sampling areas (5-meter x 5 meter)}

Reference No: QA/QC 002	Reference Rev No:	Date: 2023/03/01	Page 63 of 64
--------------------------------	-------------------	------------------	---------------

Controlled Disclosure

When downloaded from the document management system, this document is uncontrolled and the responsibility rests with the user to ensure it is in line with the authorized version on the system. No part of this document may be reproduced in any manner or form by third parties without the written consent of Eskom Holdings SOC Ltd. © copyright Eskom Holdings SOC Ltd. Reg No 2002/015527/30

	MATLA POWER STATION SCOPE OF WORK	Document Identifier	14593	Rev	7
		Effective Date	October 2024		
		Review Date	October 2027		

Reference No: QA/QC 002	Reference Rev No:	Date: 2023/03/01	Page 64 of 64
--------------------------------	-------------------	------------------	---------------

Controlled Disclosure

When downloaded from the document management system, this document is uncontrolled and the responsibility rests with the user to ensure it is in line with the authorized version on the system. No part of this document may be reproduced in any manner or form by third parties without the written consent of Eskom Holdings SOC Ltd, © copyright Eskom Holdings SOC Ltd, Reg No 2002/015527/30