

NOTES

1. Clearing and Grubbing shall be to SANS 2001-BS1
2. Earthworks shall be to SANS 2001-BE1
3. All Concrete must comply with SANS 2001-CC1 (including, but not limited to, curing)
4. All Structural Steel must comply with SANS 2001-CS1
5. The corrosion protection of steel must be to SANS 1200-HC
6. All Concrete to be 30/19 MPa
7. Blinding shall be made up of 15 MPa mass concrete
8. All Concrete to be PC/FA of the ratio 70/30
9. 6 Concrete Cubes are to be collected for every batch of concrete delivered to site.
10. All structural steel to be S355JR.
11. All structural steel must be hot dip galvanised to relevant SANS standards.
12. All Bolts to be M12 Grade 8.8 unless indicated otherwise on the drawings.
13. All welds to be E70XX 6mm Fillet Welds unless indicated otherwise on the drawings.
14. All paving to be S60 with 20mm sand on layerworks as per the construction drawings.
15. Concrete cover to foundations and the bottom of the surface bed to be 50mm
16. Construction tolerances shall be to Degree of Accuracy II (as per SANS BS1, BE1, CC1 and CS1)
17. The location of the structure must be verified on site by the contractor prior to construction
18. The detection of services must be undertaken prior to the commencement of construction

REVISIONS

No	DATE	CHECKED	APPROVED	DESCRIPTION

REFERENCE DRAWINGS

NUMBER	TITLE

ISSUED FOR RFQ



BOX 1127  
JOHANNESBURG  
2000  
TEL: 682-0911

RAND WATER

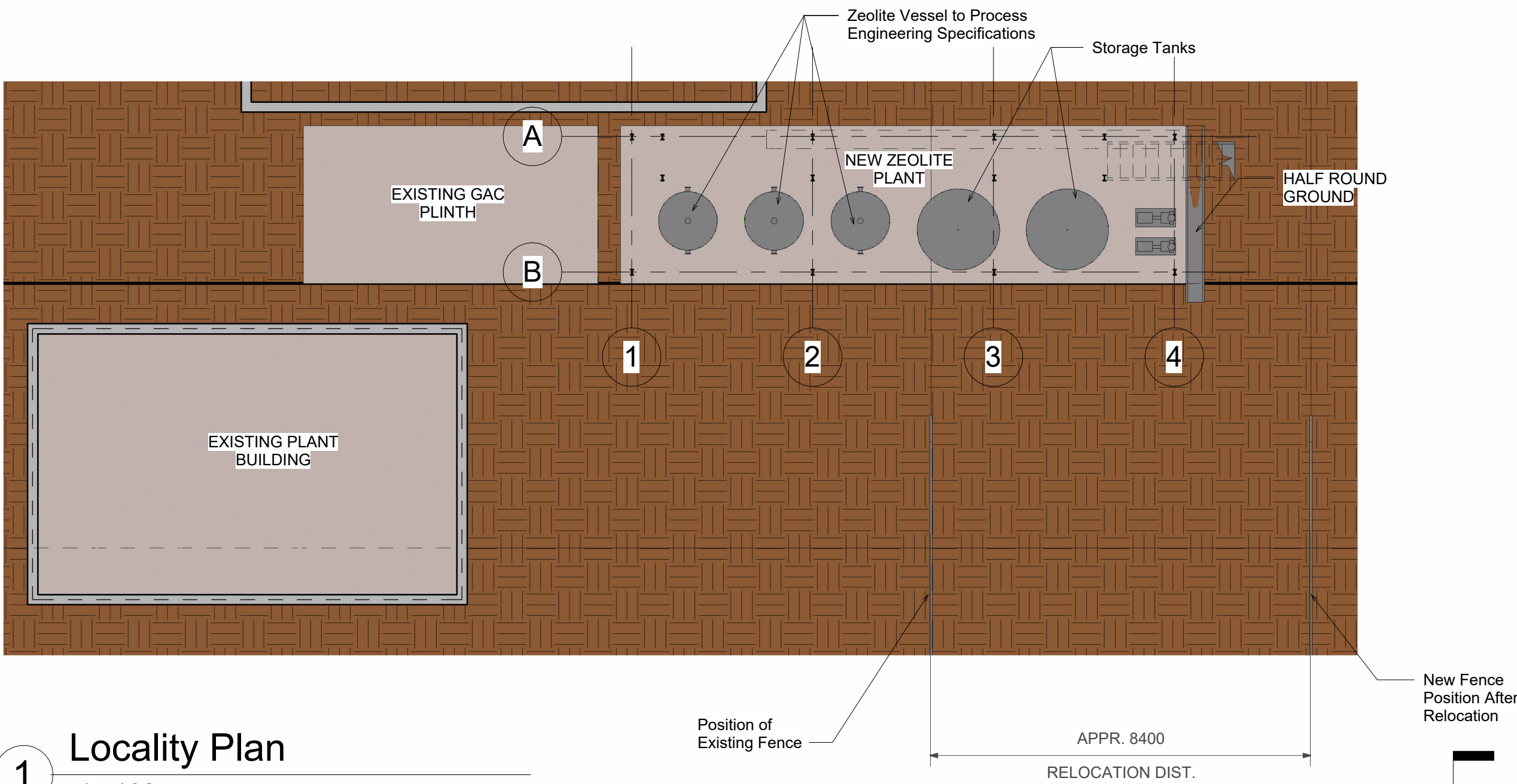
(C) RAND WATER 2004 All Rights Reserved

PROJECT No	P. 00000	CHECKED	MAMABOLO	
NETWORK No				APPROVED
CONTRACT No				
DESIGNED BY	M. MAQINA	LEAD ENG.	M. CHIBU	
DRAWN BY	M. MAQINA	REG No		
DATE	APR. 2025	DATE		
		SECTION HEAD	M. CHIBU	

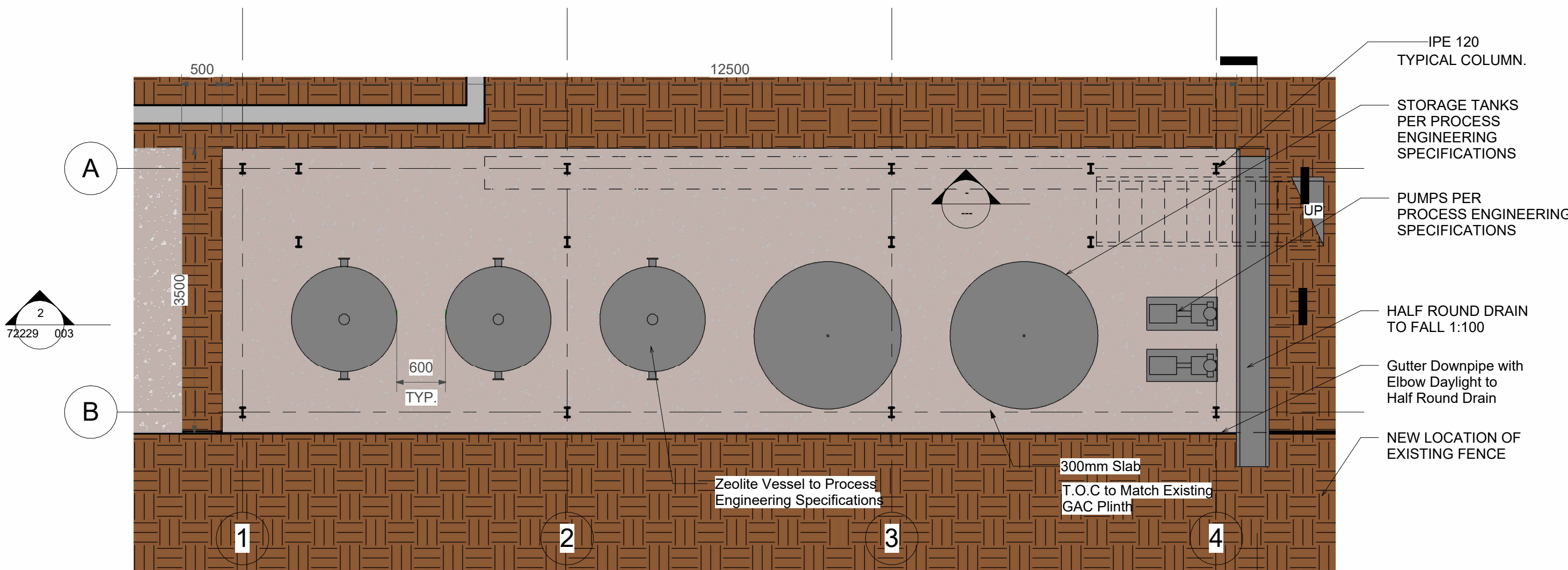
Barrage WTP  
Zeolite Station  
Civil Drawings

Barrage Zeolite Station - Steel and  
Concrete Details Sh 1

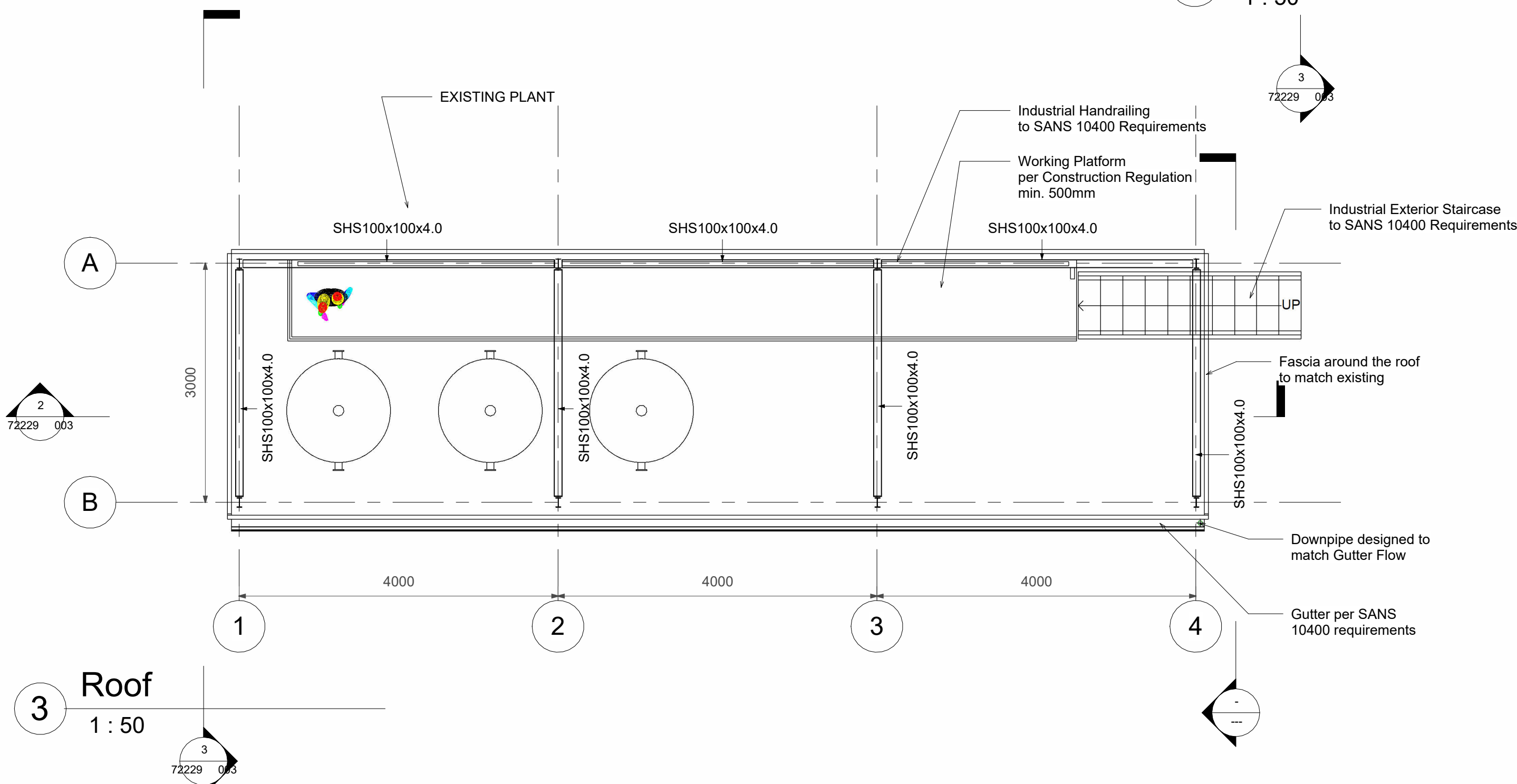
STATION		WKS		DOC. TYPE	S
SCALE					REVISION
A1		RA 72229 , 001			



1 Locality Plan  
1 : 100



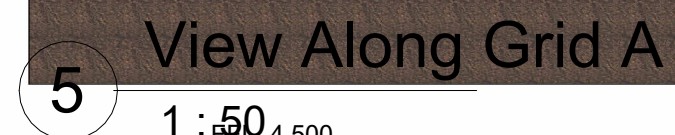
2 Zeolite Station Plan  
1 : 50



3 Roof  
1 : 50



**NOTE:**  
SIZE OF STRUCTURE AND MEMBER SIZES ARE SHOWN  
ONLY AS A GUIDELINE, SUBJECT TO THE DETAILED SIZING  
OF THE EQUIPMENT TO BE HOUSED UNDER THE STRUCTURE.





A 3D cutaway diagram of a wastewater treatment plant. The facility is housed in a long, rectangular building with a dark grey roof. Inside, there are four large, cylindrical aeration tanks in a row, each with a central vertical shaft and multiple horizontal mixing arms. To the right of the aeration tanks are two large, cylindrical clarifiers. A sludge return system is shown, with a conveyor belt or screw mechanism transferring sludge from the bottom of the clarifiers back to the aeration tanks. The entire plant is situated on a dark brown, textured ground surface.

7 Zeolite Station 3D

STATION		WKS										DOC. TYPE		S	
V	G	1	0	U	S	U						D	C	R	A
SCALE														REVISION	
A1				RA 72229								002			



NOTES

1. Clearing and Grubbing shall be to SANS 2001-BS1
2. Earthworks shall be to SANS 2001-BE1
3. All Concrete must comply with SANS 2001-CC1 (including, but not limited to, curing)
4. All Structural Steel must comply with SANS 2001-CS1
5. The corrosion protection of steel must be to SANS 1200-HC
6. All Concrete to be 30/19 MPa
7. Blinding shall be made up of 15 MPa mass concrete
8. All Concrete to be PC/FA of the ratio 70/30
9. 6 Concrete Cubes are to be collected for every batch of concrete delivered to site.
10. All structural steel to be S355JR.
11. All structural steel must be hot dip galvanised to relevant SANS standards.
12. All Bolts to be M12 Grade 8.8 unless indicated otherwise on the drawings.
13. All welds to be E70XX 6mm Fillet Welds unless indicated otherwise on the drawings.
14. All paving to be S60 with 20mm sand on layerworks as per the construction drawings.
15. Concrete cover to foundations and the bottom of the surface bed to be 50mm
16. Construction tolerances shall be to Degree of Accuracy II (as per SANS BS1, BE1, CC1 and CS1)
17. The location of the structure must be verified on site by the contractor prior to construction
18. The detection of services must be undertaken prior to the commencement of construction

REVISIONS

No	DATE	CHECKED	APPROVED	DESCRIPTION
A	2023-05-15	L. MKHIZE	L. MKHIZE	INTERNAL CHECK
0	2023-05-15	L. MKHIZE	M. CHIBU	ISSUED FOR CONSTRUCTION

REFERENCE DRAWINGS

NUMBER	TITLE
61361_001	VG EMS Yard Spares Shed - Steel and Concrete Details
61362_001	VG EMS Yard Spares Shed - Steel Details
61362_002	VG EMS Yard Spares Shed - Connections Legend
61363	VG EMS Yard Spares Shed - Schedules
61377	Additions Store - Plans, Sections, Elevations & Schedules

ISSUED FOR RFQ



BOX 1127  
JOHANNESBURG  
2000  
TEL: 682-0911

RAND WATER

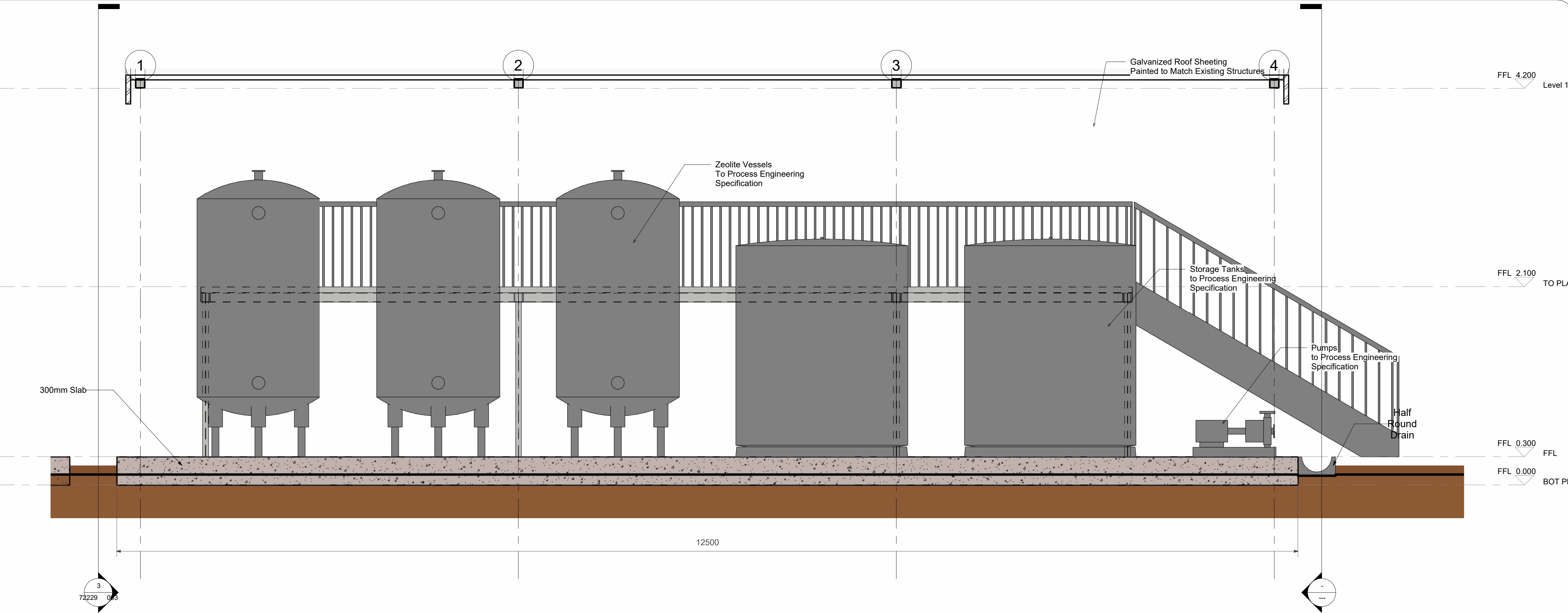
(C) RAND WATER 2004 All Rights Reserved

PROJECT No	P. 00000	CHECKED	MAMABOLO	
NETWORK No			APPROVED	
CONTRACT No		LEAD ENG.	M. CHIBU	
DESIGNED BY	M. MAQINA	REG No		
DRAWN BY	M. MAQINA	DATE		
DATE	APR. 2025	SECTION HEAD	M. CHIBU	

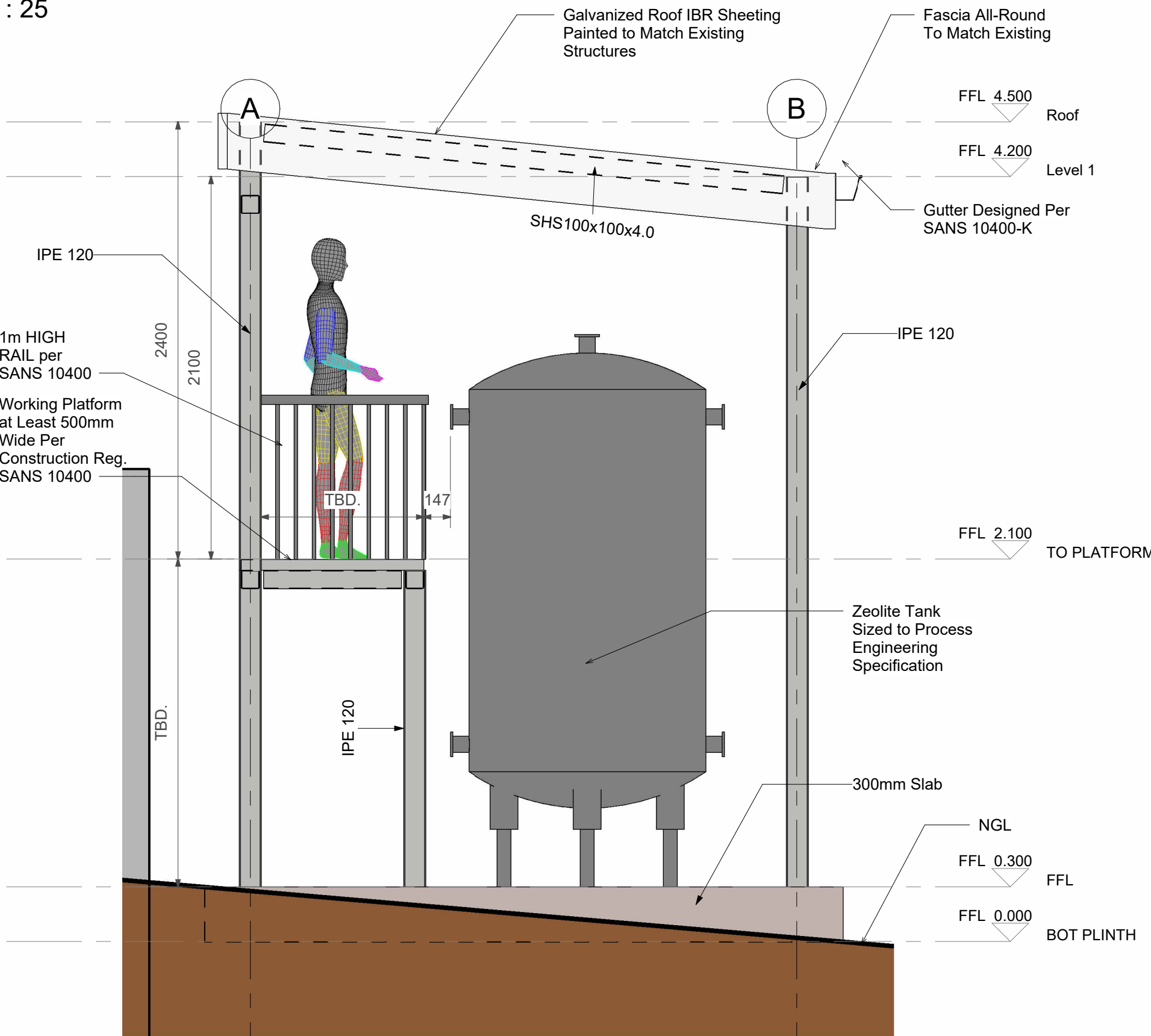
Barrage WTP  
Zeolite Station  
Civil Drawings

Barrage Zeolite Station - Steel and  
Concrete Details Sh 3

STATION	WKS	DOC. TYPE	S
V G	1 0 U S U	D C R	A
SCALE		REVISION	
A1	RA 72229 , 003		0



Section 1  
1 : 25



Section 2  
1 : 25

**NOTE:**  
SIZE OF STRUCTURE AND MEMBER SIZES ARE SHOWN  
ONLY AS A GUIDELINE, SUBJECT TO THE DETAILED SIZING  
OF THE EQUIPMENT TO BE HOUSED UNDER THE STRUCTURE.

