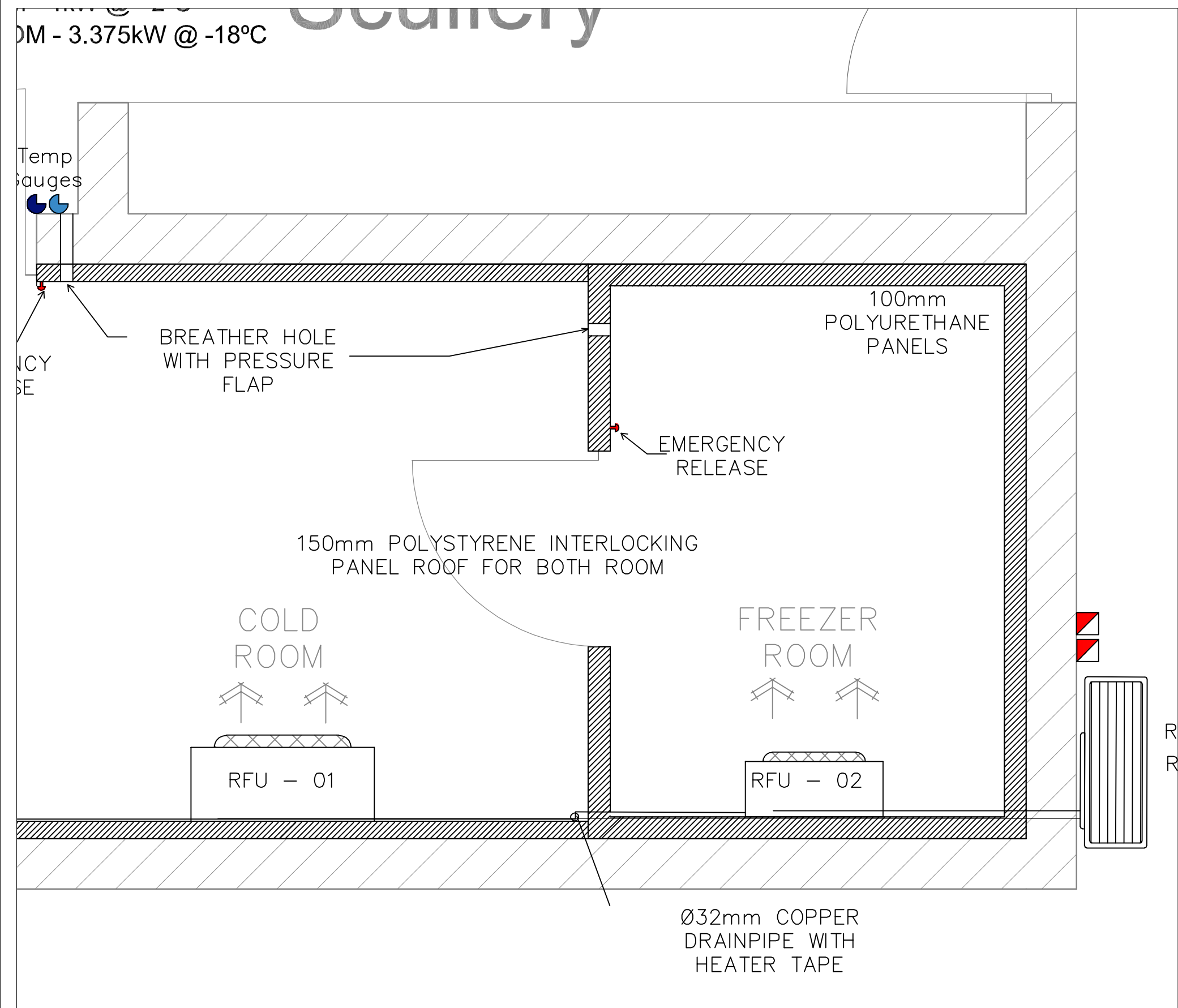
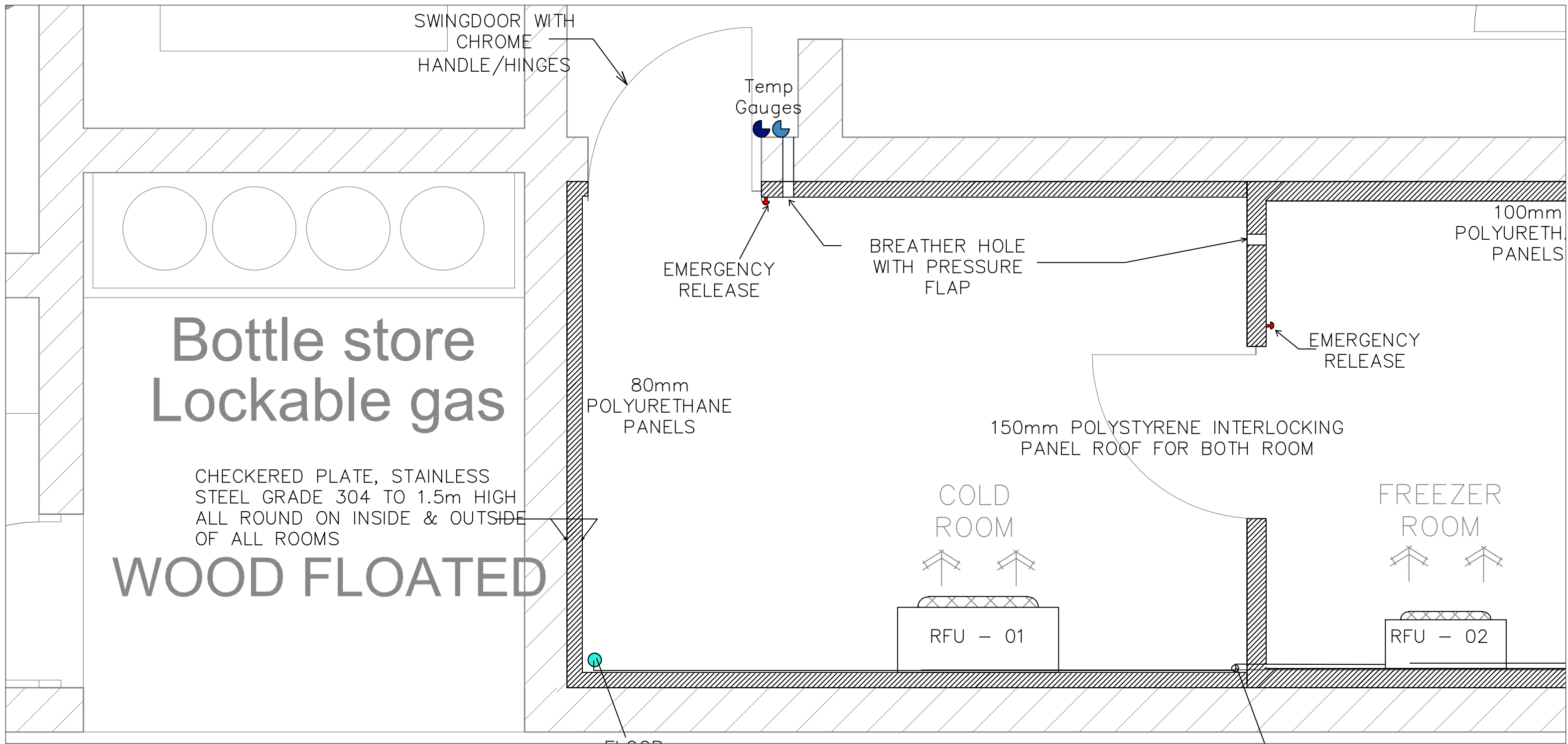


COLD & FREEZER ROOM LAYOUT
SCALE 1:25

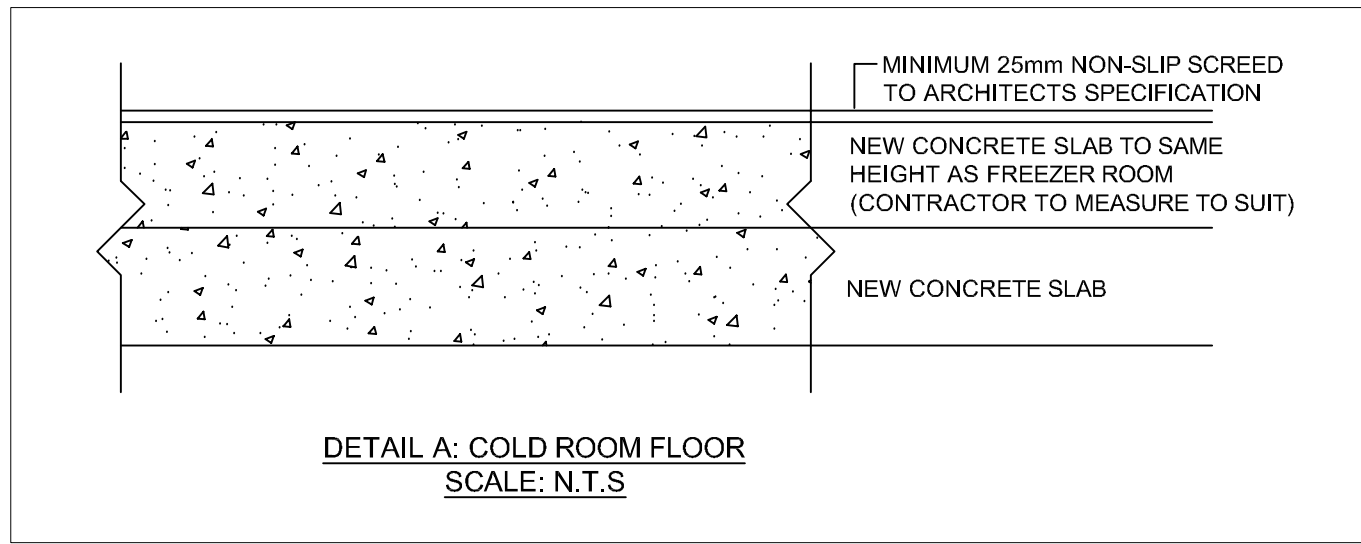
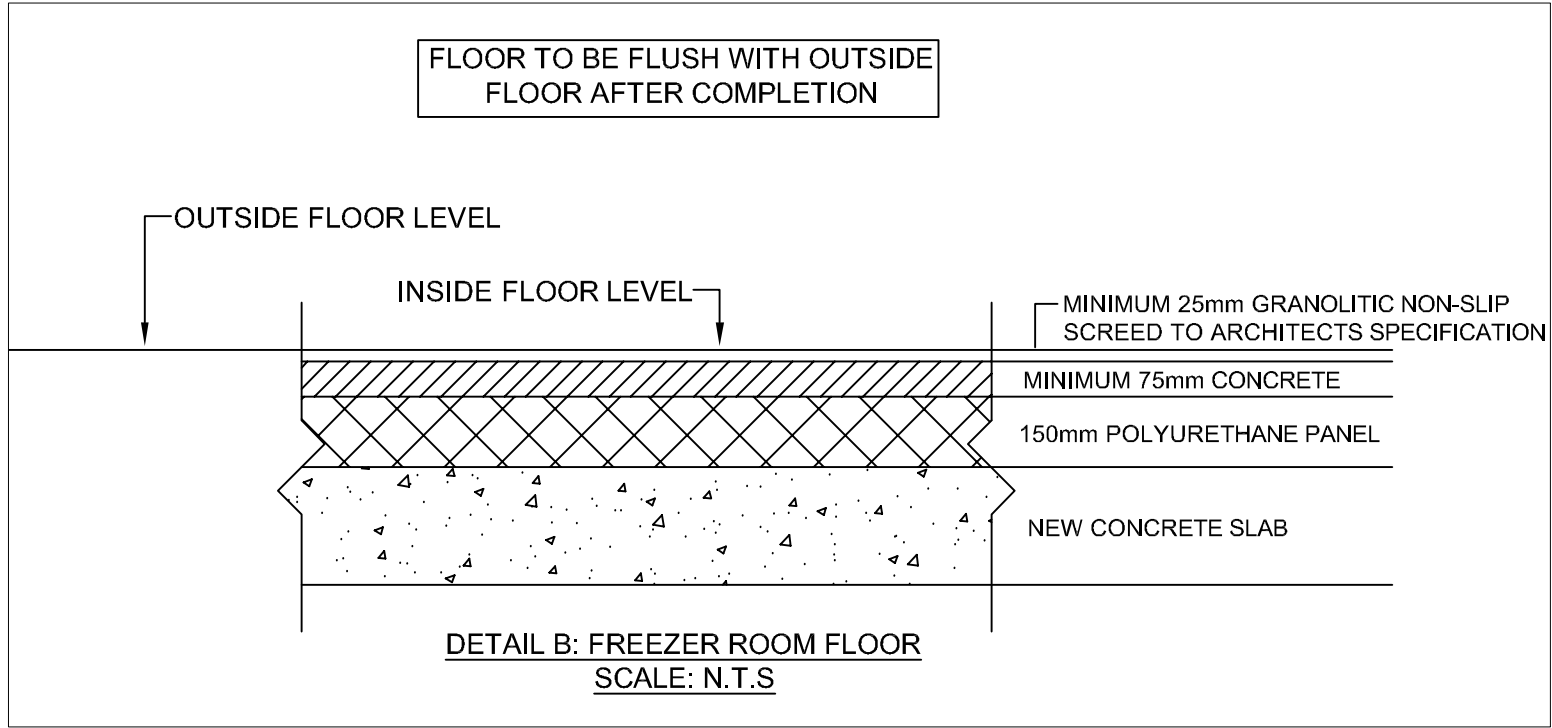
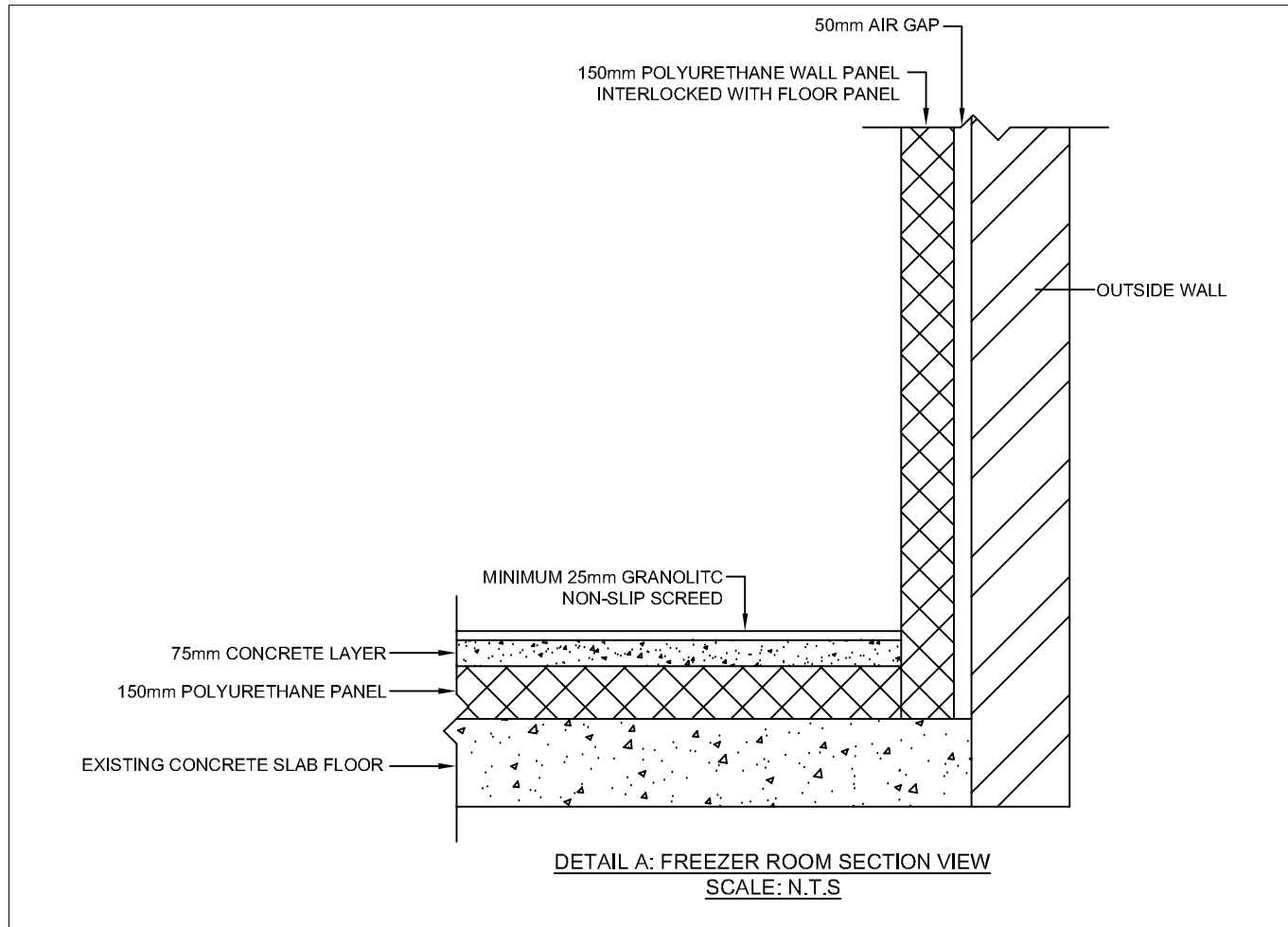


FREEZER ROOM LAYOUT
SCALE 1:20



COLD & FREEZER ROOM DETAIL
SCALE 1:20

FOR
TENDER



REV	DATE	DESCRIPTION	ISSUED BY	APPR. BY	SIGNATURE
A	17-07-20	UPDATED MECHANICAL LAYOUT UPDATED ARCHITECTURAL LAYOUT	RR	RR	

- GENERAL NOTES:
- CAPACITIES**
1. BASED ON A 14-HOUR RUNNING CYCLE, COLD ROOM TEMPERATURES TO BE ADJUSTABLE FROM -10°C TO 0°C
 2. FREEZER ROOM TEMPERATURES TO BE ADJUSTABLE FROM -20°C TO 0°C
 3. CONTROLS TO BE INSIDE CONTROL PANEL OF CONDENSING UNITS. CONTRACTOR TO PROVIDE CONTROL PANEL AS PER SPECIFICATIONS
 4. TEMPERATURE GAUGES TO BE 50/100mm DIA. GAUGES
 5. HEATER TAPE TO BE WRAPPED AROUND CONDENSATE DRAIN PIPE INSIDE FREEZER ROOM AND COVERED WITH NON-DROP TAPE
 6. PROVIDE AUTOMATIC DEFROST CONTROL TO BLOWER UNITS
 7. MECHANICAL CONTRACTOR TO DO ALL ELECTRICAL WIRING ISOLATOR TO CONDENSING UNITS
 8. FLUORESCENT LIGHTS TO BE SUPPLIED BY ELECTRICAL CONTRACTOR
 9. FAULT INDICATION LIGHTS TO BE MARKED 'COLD ROOM' & 'FREEZER ROOM'
 10. GRANULITIC FINISH TO ALL FLOORS, THRESHOLDS AND SIMILAR HORIZONTAL SURFACES SHALL BE AT LEAST 25mm THICK, COMPOSED OF 2 PARTS GRANITE OR OTHER APPROVED HARD STONE CHIPPING OR APPROVED HARD COARSE SHARP WASHES GRANITE OR QUARTZITIC SAND, GRADED UP TO A MAXIMUM SIZE OF 5mm, HALF PART CLEAN PIT SAND SCREENED THROUGH A 2.4mm MESH SIEVE AND PART OF CEMENT, AND HAND OR MECHANICAL STEEL, TOWELED TO A TRUE AND SMOOTH SURFACE
 11. THE GRANULITIC SHALL BE LAID BEFORE THE CONCRETE SUB-FLOOR HAS MATURED, OTHERWISE THE EXPOSED SURFACE OF CONCRETE SHALL BE THOROUGHLY CLEANED WITH A WIRE BRUSH AND A COAT OF NEAT CEMENT GROUT APPLIED IMMEDIATELY BEFORE THE GRANULITIC IS LAID
 12. WHERE THE GRANULITIC IS TO BE TAINTED IT SHALL BE LAID IN TWO THICKNESS IN ONE OPERATION, THE LOWER THICKNESS BROUGHT UP TO WITHIN 5mm OF THE FINISHED LEVEL, AND THE UPPER THICKNESS THEN LAID INTO WHICH THE REQUIRED QUANTITY OF APPROVED COLORING MATERIAL SHALL HAVE BEEN MIXED. NO DUSTING OF COLORING MATERIAL WILL BE ALLOWED
 13. EXPOSED SLEANT ANGLES OF GRANULITIC SHALL BE NEATLY ROUNDED TO APPROXIMATELY 20mm RADIUS
 14. ALL GRANULITIC WORK SHALL BE DONE BY EXPERIENCED WORKMEN, AND SHALL BE PROTECTED FROM INJURY CAUSED BY RAIN OR OTHER EXTREME WEATHER FOR 24 HOURS AFTER BEING LAID, AND AGAINST TOO RAPID DRYING WHILE HARDENING, BY BEING COVERED WITH WET SACKS, OR OTHER SUITABLE MATERIAL, AND SHALL BE PROTECTED FROM INJURY AND DISCOLORATION DURING THE PROGRESS OF THE REMAINING WORK TO MANUFACTURER'S DETAIL
 15. EDGES OF GRANULITIC FLOORS BUTTING AGAINST DIFFERENT FLOOR FINISHINGS, AND EDGES OF MARGINS, ETC., SHALL REMAIN IN POSITION UNTIL THERE IS COMMENCEMENT OF THE LAYING OF THE ADJOINING FLOOR MATERIAL
 16. DOORS SHALL BE HINGED (CHROME PLATED)
 17. DOORS SHALL PROVIDE A CLEAR OPENING OF AT LEAST 815mm WITH THE DOOR OPENING REINFORCED AND FINISHED ALUMINUM SECTIONS
 18. DOOR INSULATION, FINISHES AND CLADDING SHALL BE AS SPECIFIED FOR THE WALL PANELS
 19. DOOR CORNERS SHALL BE NEATLY REINFORCED
 20. COLD AND FREEZER ROOM SHALL BE FITTED WITH AIR CURTAINS
 21. DOORS SHALL BE LOCKABLE THROUGH OPENING HANDLE BY MEANS OF PADLOCK, PADLOCK INCLUDED IN THIS CONTRACT. PIN SHALL BE MIN 6mm THICK WITH SOLID BRASS BODY. WASP & STAPLE NOT ACCEPTABLE
 22. THE LOCKING MECHANISM SHALL BE SUCH THAT IT IS POSSIBLE TO OPEN THE DOOR FROM THE INSIDE UNDER ALL CIRCUMSTANCES, INCLUDING WHEN LOCKED
 23. SWING TYPE HINGED DOORS FOR FREEZER ROOMS SHALL NOT BE FITTED FLUSH WITH THE WALL PANEL BUT SHALL FIT 'SLAM ON'
 24. RUBBER BACK STOPS SHALL BE FITTED TO ALL DOORS TO PREVENT DAMAGE TO DOORS AND WALLS ON OPENING
 25. THE MECHANICAL CONTRACTOR WILL BE REQUIRED TO PROVIDE A FULL SET OF WORKSHOP DRAWINGS INCLUDING CONTROL PANEL DRAWING WITH WIRING AND ON/OFF LIGHTS AS PER SPECIFICATION AT LEAST 3 WEEKS BEFORE COMMENCING CONSTRUCTION OR PROCUREMENT OF ANY MATERIAL

CLIENT:



CONSULTANT:



Gauteng Office (Head Office)
GladAfrica House, Hartford Office Park
90 Bekker Road, Vorna Valley, Midrand, 1685
P.O. Box 6723 Halfway House 1685
Tel: +27 11 312 2537/2584
Fax: +27 11 805 1950
www.gladafrika.com

	NAME	REG. NO.	SIGNATURE	DATE
DRAWN	N.H			
DESIGNED	R.R	20140432		
APPROVED	R.R	20140432		

PROJECT DESCRIPTION
TROMPSBURG SPECIAL SCHOOL : SCHOOL SECTION
DRAWING TITLE
MULTI PURPOSE HALL COLD & FREEZER ROOM LAYOUT

STATUS LEGEND		SHEET SIZE	
I	= INFORMATION	A1	
CV	= CONCEPT AND VIABILITY	SCALE AS SHOWN	
D	= DESIGN DEVELOPMENT		
T	= TENDER		
C	= CONSTRUCTION		
AB	= AS BUILT	REVISION	
DISCIPLINE	DRAWING NUMBER	STATUS	REVISION
MECHANICAL	92-ME-AC-007	T	A