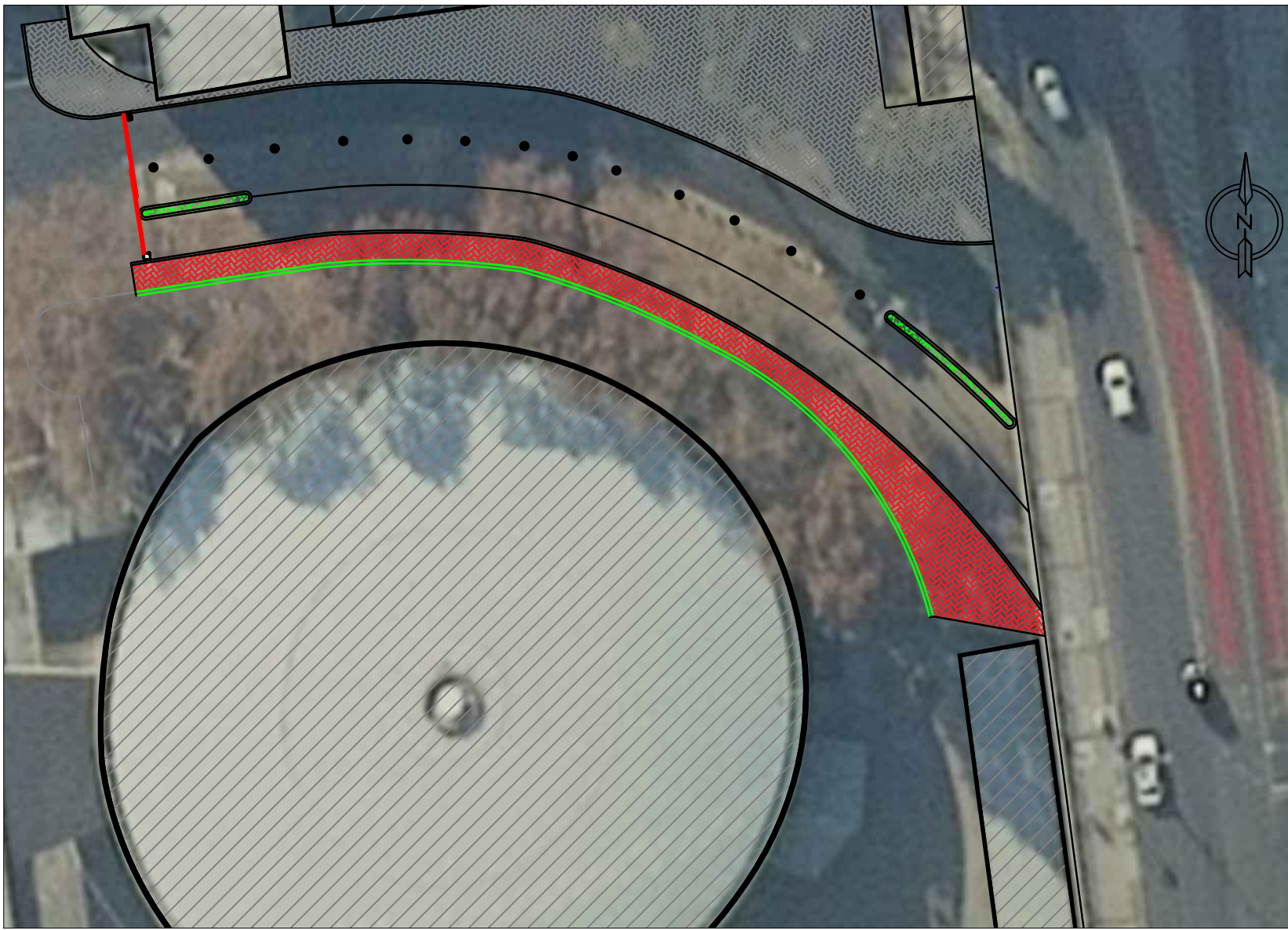


- GENERAL NOTES:-
1. ALL CAST IN SITU CONCRETE IS TO BE GRADE 20 / 13.
  2. THE SURFACES OF THE CAST IN SITU CHANNEL / FILLET ARE TO HAVE A STEEL FLOAT FINISH.
  3. EXPANSION JOINTS TO BE FORMED THROUGH THE KERBING, CHANNEL / FILLET AND FOUNDATIONS AT INTERVALS NOT EXCEEDING 18.0m.
  4. CONTRACTION JOINTS TO BE FORMED THROUGH THE CHANNEL / FILLET AT 20m INTERVALS.
  5. WHERE KERB RADIUS IS LESS THAN 25m THE KERB LENGTH SHALL BE 300mm. WHERE THE KERB RADIUS IS LESS THAN 2m THE KERBING SHALL BE CAST IN SITU.
  6. PRECAST KERBS ARE TO BE LAID WITH A 13mm GAP BETWEEN KERBS, WHICH SHALL THEN BE FILLED WITH A CEMENT MORTAR.
  7. EXTRUDED KERBS:
    - a) ASPHALT KERB: ASPHALT TO COMPLY WITH THE REQUIREMENTS OF CLAUSE EG.3.1
    - b) CONCRETE KERB:
      - i. THE CONCRETE IS TO HAVE A CUBE STRENGTH OF 20MPa AT 28 DAYS.
      - ii. THE CONCRETE MIX DESIGN IS TO BE APPROVED BY THE ENGINEER.
      - iii. CONTRACTION JOINTS TO BE FORMED AT 2.0m INTERVALS.
      - iv. EXPANSION JOINTS ARE TO FORMED AT 6.0m INTERVALS ON STRAIGHTS AND 2.0m INTERVALS WHERE THE KERB RADIUS IS LESS THAN 50m.

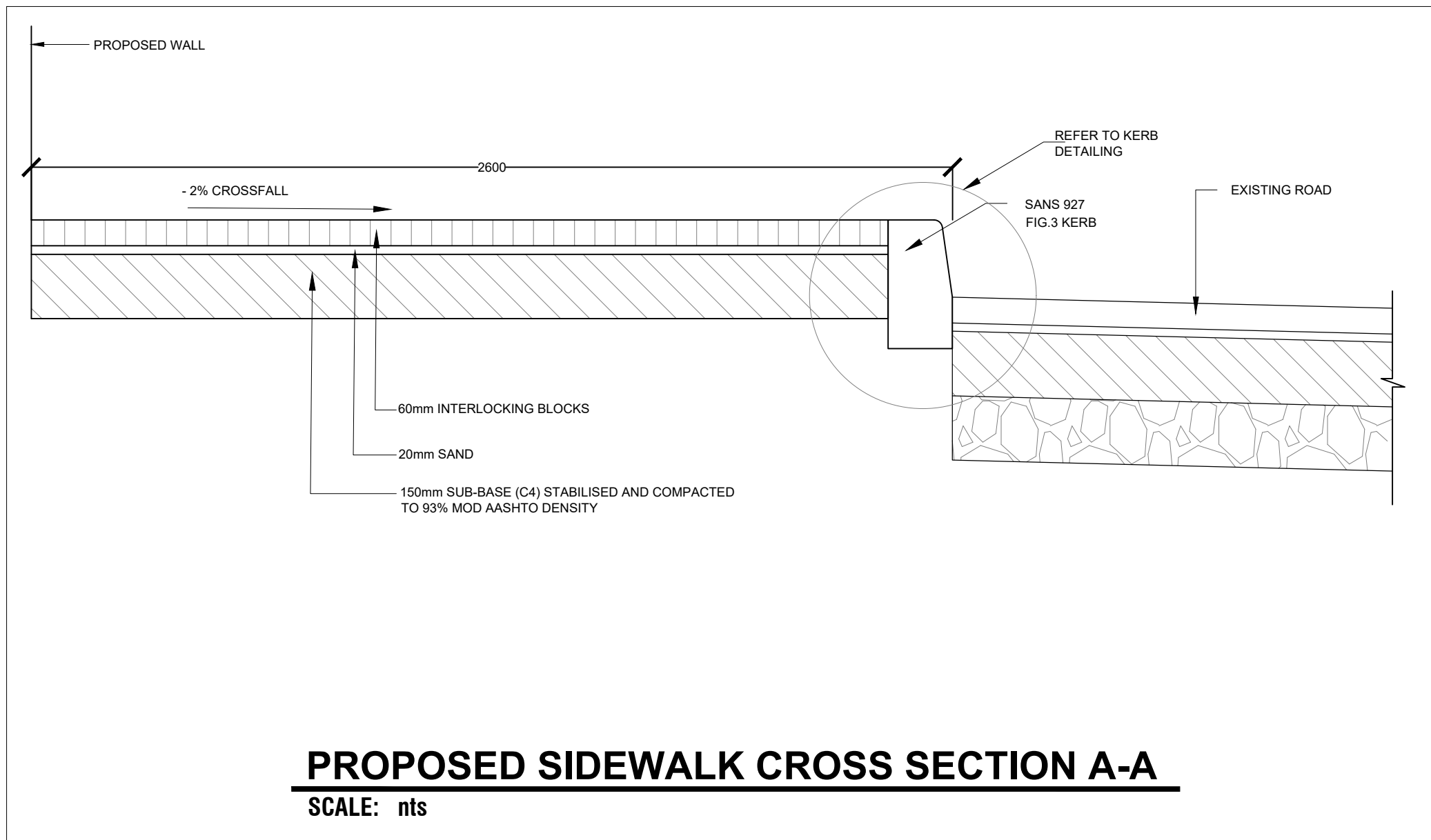
- COPYRIGHT**
- This drawing is the property of **HiEnd Group (Pty) Ltd.** and is intended for the use only on site and for the project to which it relates.
  - Copyright in this drawing is owned by **HiEnd Group (Pty) Ltd.**

- GENERAL NOTES**
1. This drawing must be read in conjunction with all the relevant drawings, schedules and specifications from the Architect, Engineers and all other consultants related to the project.
  2. All material and workmanship must comply with the requirements of the SANS 10400 and other relevant SANS Standards.
  3. All dimensions are in millimeters (unless otherwise specified).
  4. All levels and dimensions to be checked on site by the contractor before work is carried out and any discrepancies to be reported to the Engineer.
  5. The contractor shall in all aspects of the works comply with the provisions of the Occupational Health and Safety Act, 1993 (Act No 85 of 1993) and any regulations promulgated in terms of that Act or the Factories Machinery and Building Works Act of 1941.

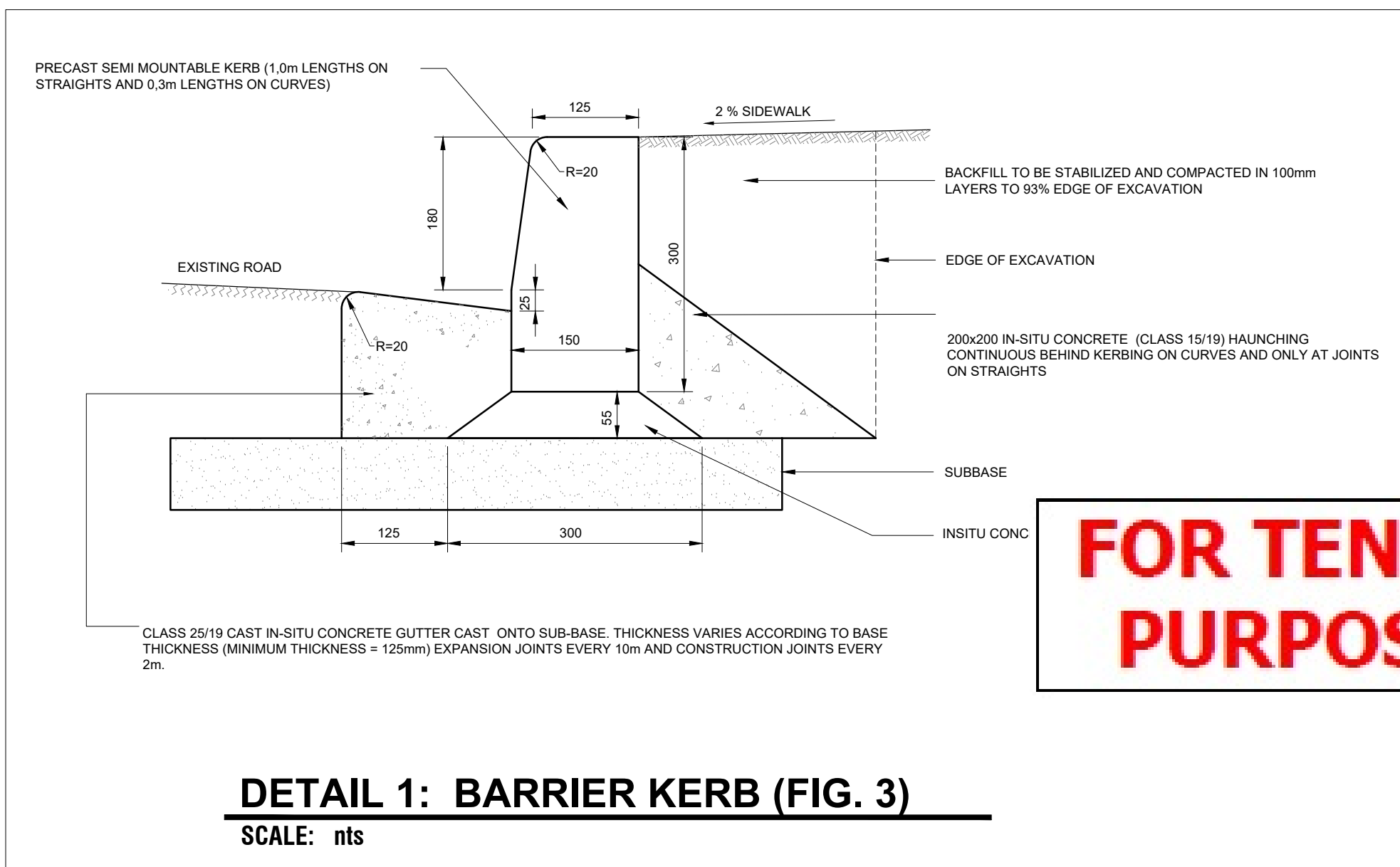
- LEGEND**
- PROPOSED WALL
  - PROPOSED PAVING



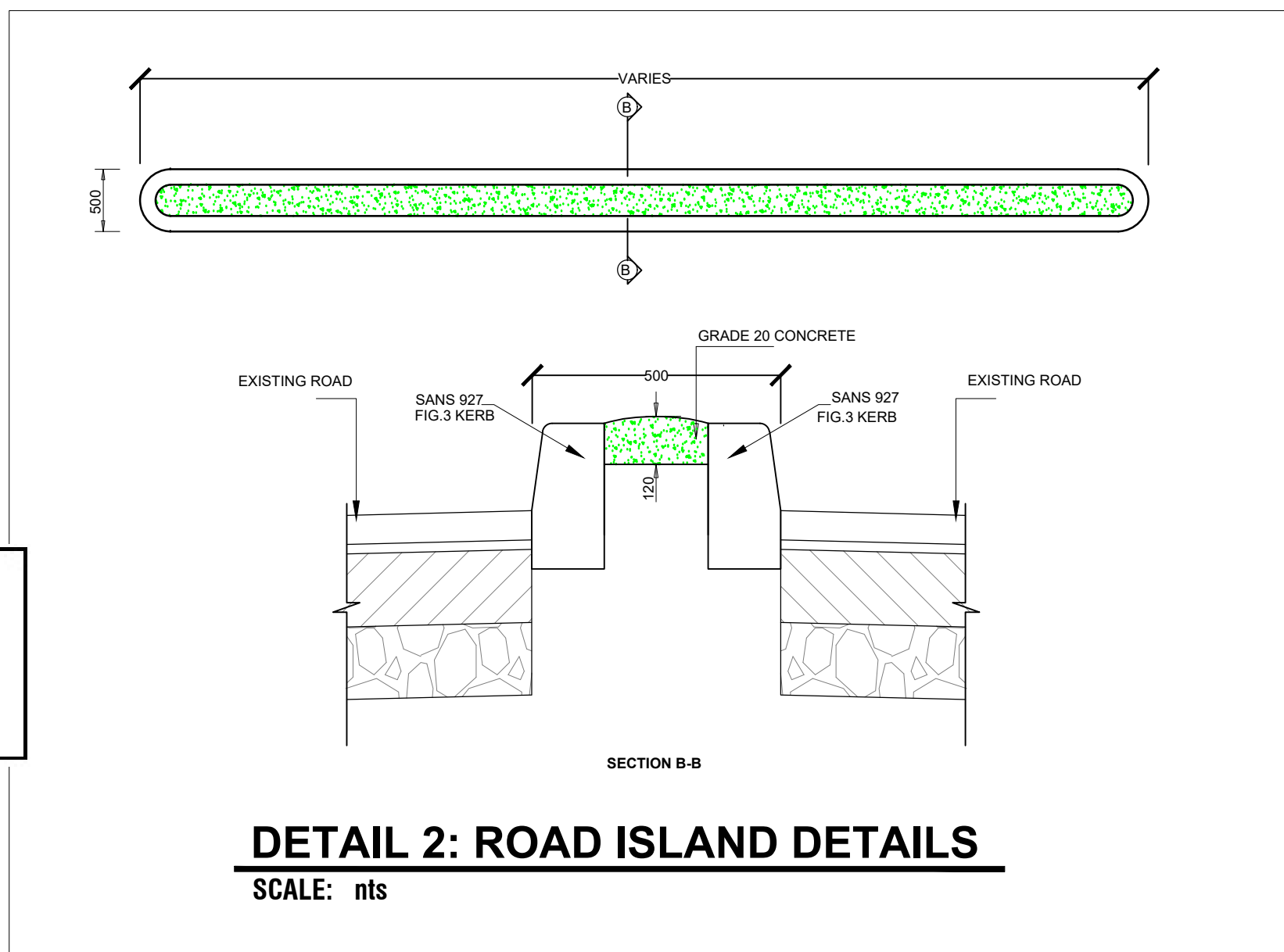
**SITE LAYOUT PLAN**  
SCALE: 1 : 100



**PROPOSED SIDEWALK CROSS SECTION A-A**  
SCALE: nts



**DETAIL 1: BARRIER KERB (FIG. 3)**  
SCALE: nts



**DETAIL 2: ROAD ISLAND DETAILS**  
SCALE: nts

CONSULTANT'S DETAILS				REVISIONS		CLIENT'S DETAILS		DESIGNED BY:		signature:		PROJECT DESCRIPTION:		CONTRACT NO.:		
 AN INFRASTRUCTURE CONSORTIUM COMPANY	OFFICE 7, BLOCK 5			REV	DATE	DESCRIPTION OF CHANGES	BY	 PASSENGER RAIL AGENCY OF SOUTH AFRICA	N.NDLOVU			PRASA LEYD'S ENTRANCE		HO/CRES/PARK/023/10/23		
	TYGER VALLEY OFFICE PARK											DATE:		JUNE 2022		
	76 PONY STR.									N.NDLOVU			DRAWING UNITS:		MM	
	SILVERLAKES,												DRAWING SCALE:		AS SHOWN	
	PRETORIA, 0002										L.HLUNGWANI		DRAWING TITLE:		HEG-PRASA-CE-001	
	TELL NO. : 087 012 5632										C.MAKHELE			WALKWAY AND ISLAND DESIGN		REVISION NO:
														0		