

EXISTING TRANSFORMER No.1



Picture 1: Currently disconnected Transformer No.1



Picture 2: Currently disconnected Transformer No.1



VT, CTs and circuit breaker marshalling kiosk



Tap changer marshalling kiosk



Tap changer label

SOUTH WALES TRANSFORMERS LTD - PORT ELIZABETH.

TRANSFORMER TO BRITISH STANDARD No 171/1959

10000 KVA

THREE PHASE

50 CYCLES

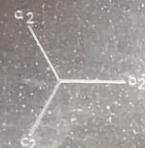
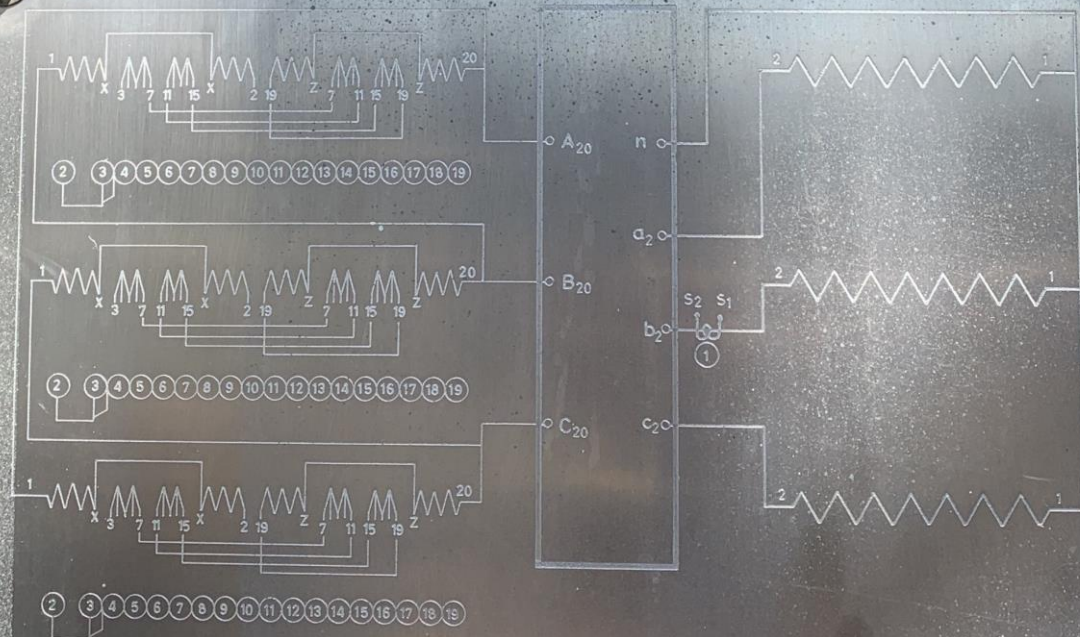
VOLTS H.V.	22000	AMPS H.V.	262.0	CORE & WINDINGS	23800	LB.
VOLTS L.V.	6600	AMPS L.V.	875.0	COMPLETE WITHOUT OIL	41940	LB.
VECTOR GROUP	YNyn	PERCENT IMPEDANCE	9.5	TOTAL WEIGHT	54820	LB.
AUX. DIAGRAM	SA 1500	COOLING	O.N.	TOTAL WEIGHT OF OIL	12880	LB.
DIAGRAM No	401390	RATED VOLTAGE (V)	6000	OIL IN RADIATORS	420	GAL.
MAN'F. SERIAL No	9575	DATE OF MAN'F.	1969	OIL IN O.L.T.C.	78	GAL.
CUSTOMERS SERIAL No				TOTAL OIL QUANTITY	1480	GAL.

TAP POSITION	H.V. TURNS %	H.V. CONNECTIONS	H.V. TURNS	H.V. CONNECTIONS	CORRESPONDING H.V.
1	105.0	2	19875	2	20625
2	103.75	2	19750	2	20350
3	102.5	2	19625	2	20075
4	101.25	2	19500	2	19800
5	100.0	2	19375	2	19525
6	98.75	2	19250	2	19250
7	97.5	2	19125	2	18975
8	96.25	2	19000	2	18700
9	95.0	2	18875	2	

QT REF. POSITION	APPLICATION	WINDING	BURDEN	WISS
1	SA 1500	SA 1500	SA 1500	SA 1500

H.V. WINDING

L.V. WINDING



INSULATION LEVEL (KV) H.V. 150 L.V. 75

Transformer label.

OTHER YARD EQUIPMENT:



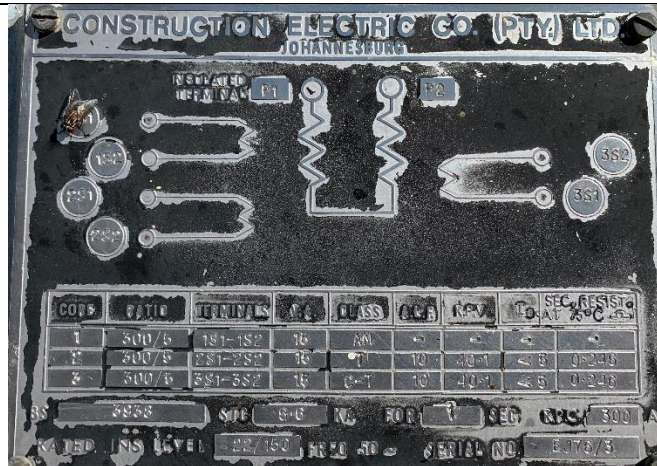
Isolator that needs to be serviced



Isolator label



CTs that need to be serviced



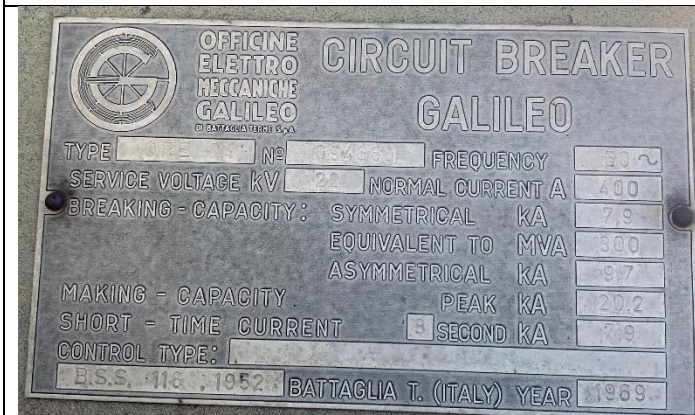
One of the CT labels



22 kV circuit breaker that needs to be serviced



22 kV CTs and circuit breaker



Label on circuit breaker



Label on circuit breaker mechanism



22kV VT to be serviced



22 kV VT's label



Two 22 kV "Dog Boxes" to be serviced

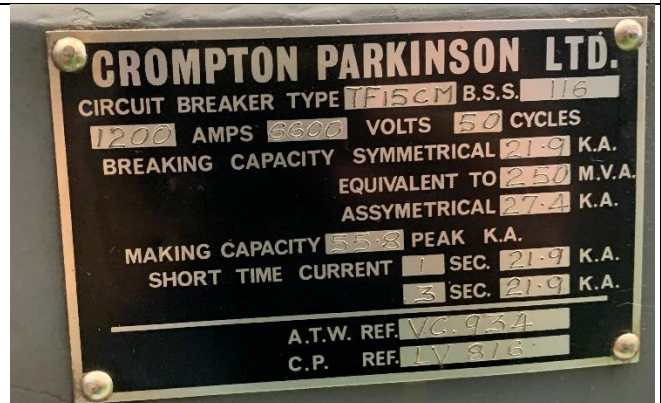
INSIDE SUBSTATION:



6.6 kV Switchgear Panels to be serviced



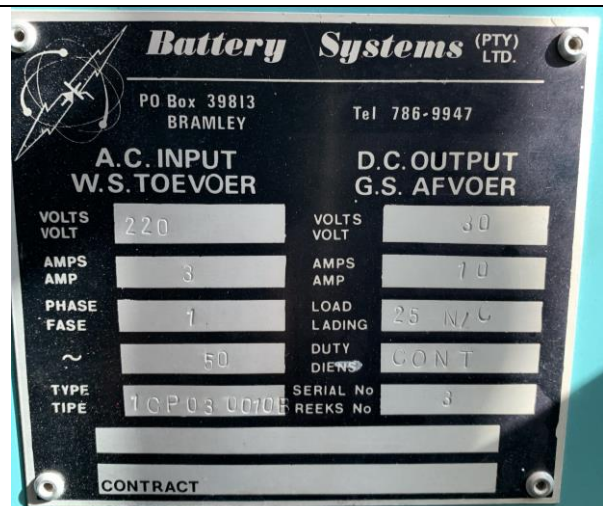
6.6 kV incomer breaker removed



6.6 kV incomer breaker label



Existing BTUs that might have to be moved to make space for new control panel



Rating plate of BTU



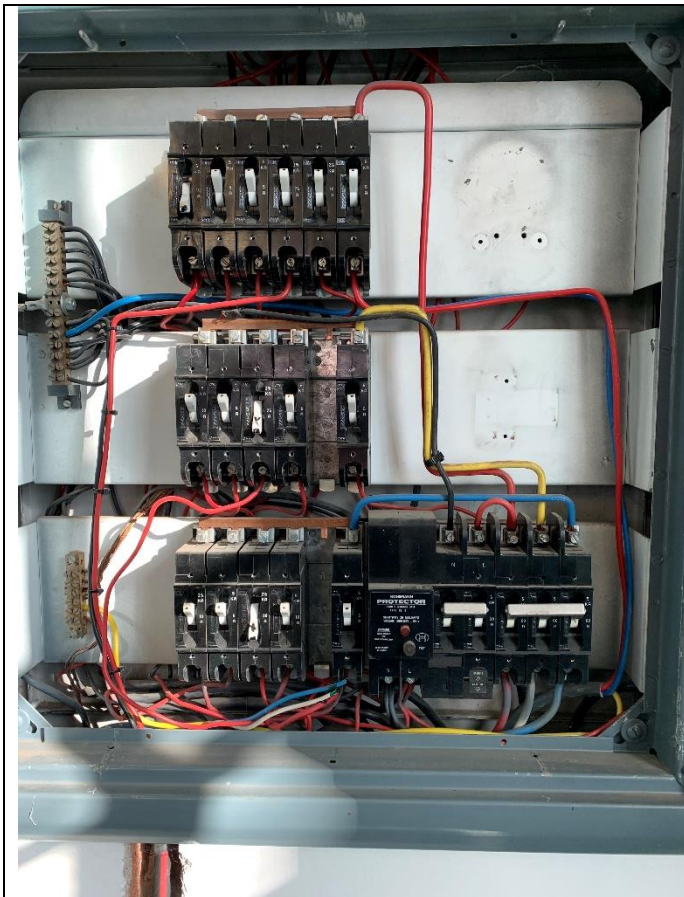
Batteries of BTU No.1 to be replaced.



Batteries of BTU No.2 to be replaced.



Combined Transformer No.1 and 2' tap changer and 22kV breaker control panels with indication and relays.



Substation DB with cover plate off



Substation DB cover plate