

GENERAL NOTES

This drawing is issued for Electrical purposes only, and should be read in conjunction with the Electrical Specification, Setting out of Electrical and Electronic accessories are to be as indicated on Architects details.

Refer to Architects and Structural Drawings for all building dimensions, latest building revisions and services.

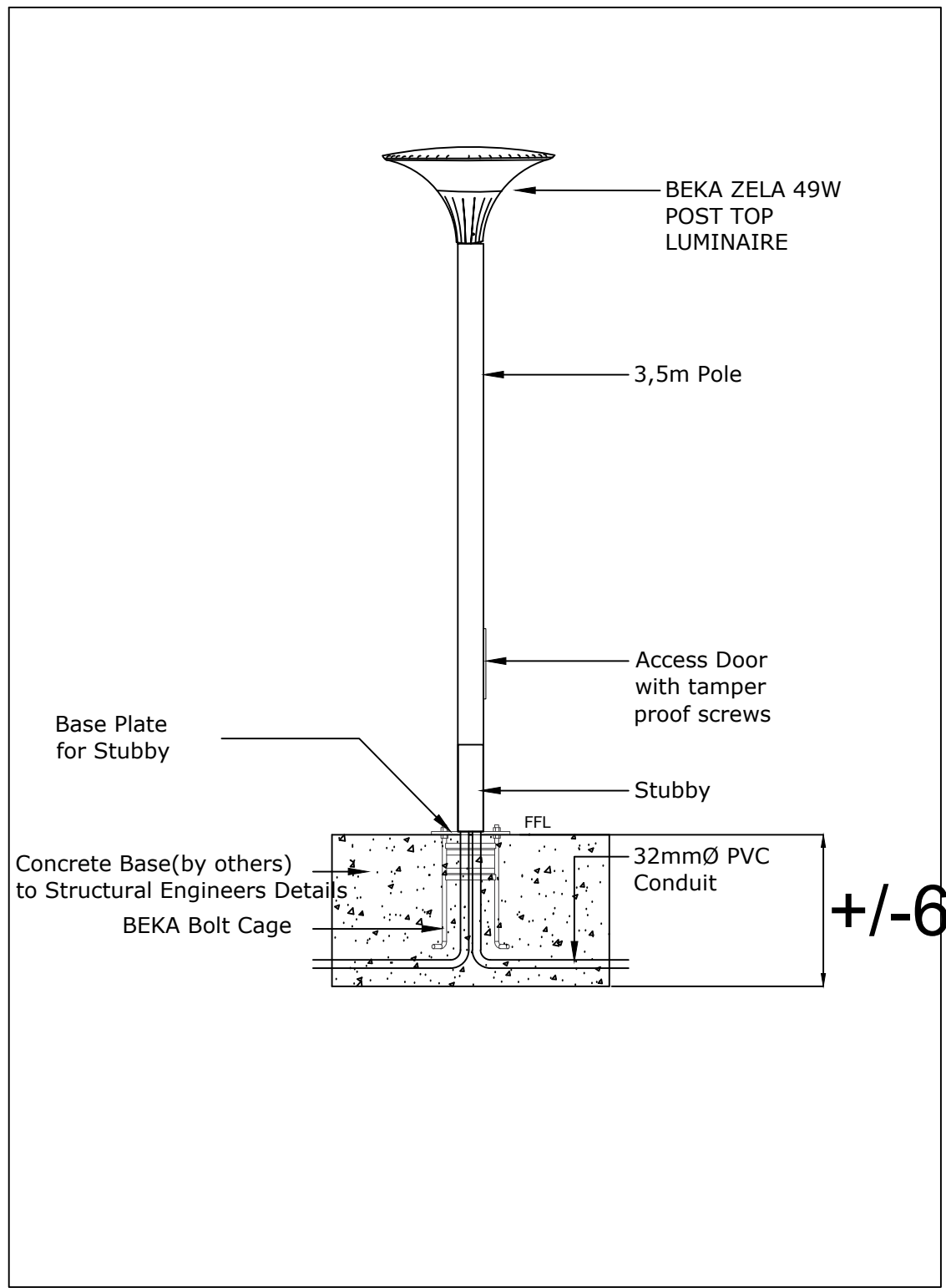
Do not scale this drawing.

All work to comply with relevant Standards, Codes of Practice, Specification and Regulations.

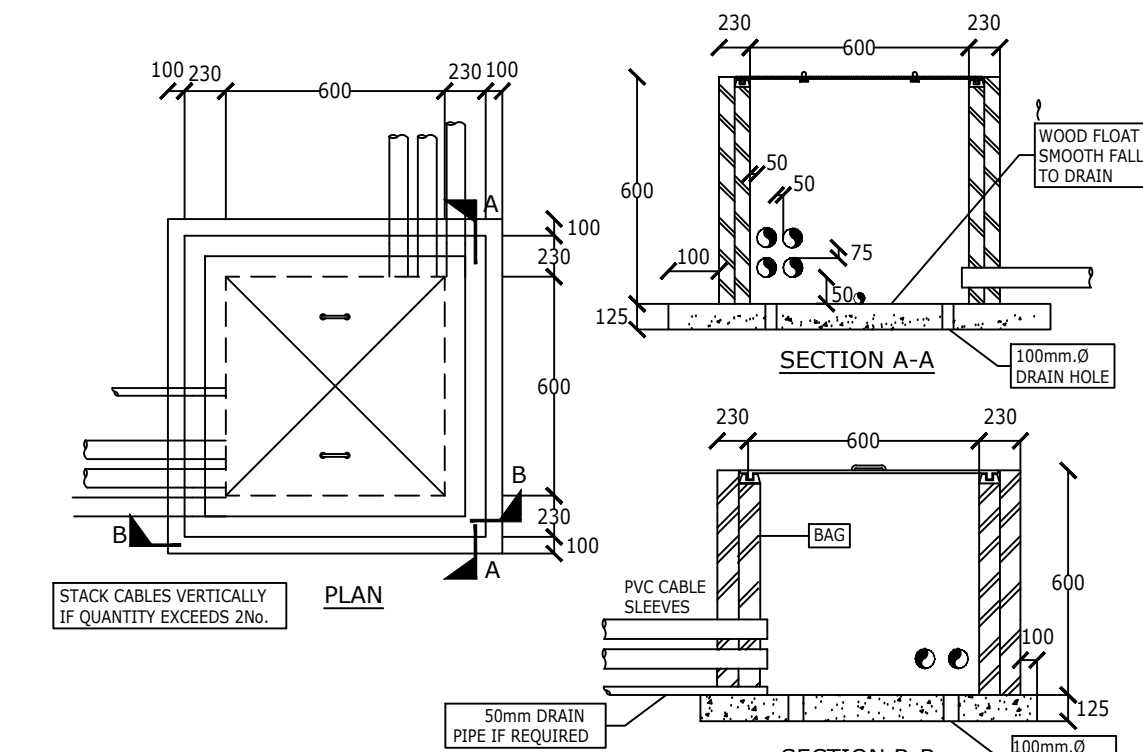
Notwithstanding anything to the contrary, all rights reserved. No part of this drawing may be reproduced in any material form (including photo-copying or storage in any medium or by electronic means and whether or not transiently or incidentally to some other use of this drawing). In addition, this drawing may not be used for any purpose or reason other than for which it was originally issued, without written permission of the author.

DRAWING NOTES

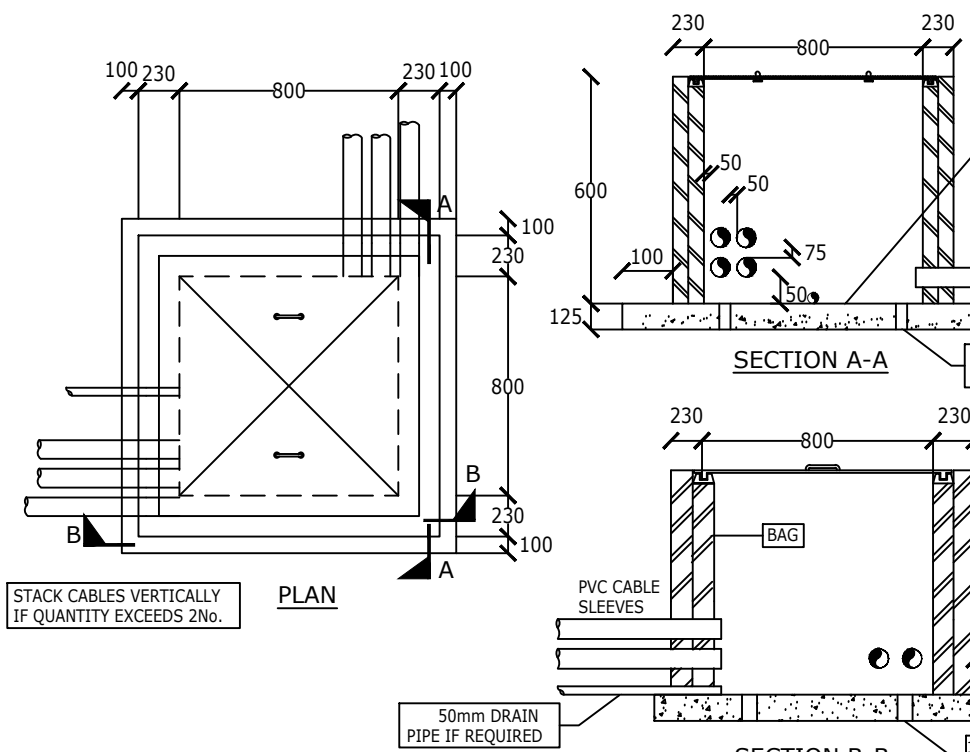
- 800x800mm WIDE ELECTRICAL MANHOLE
- 600x600 MANHOLE FOR DATA SERVICES



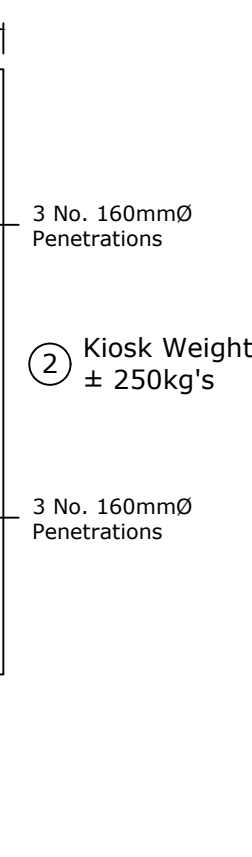
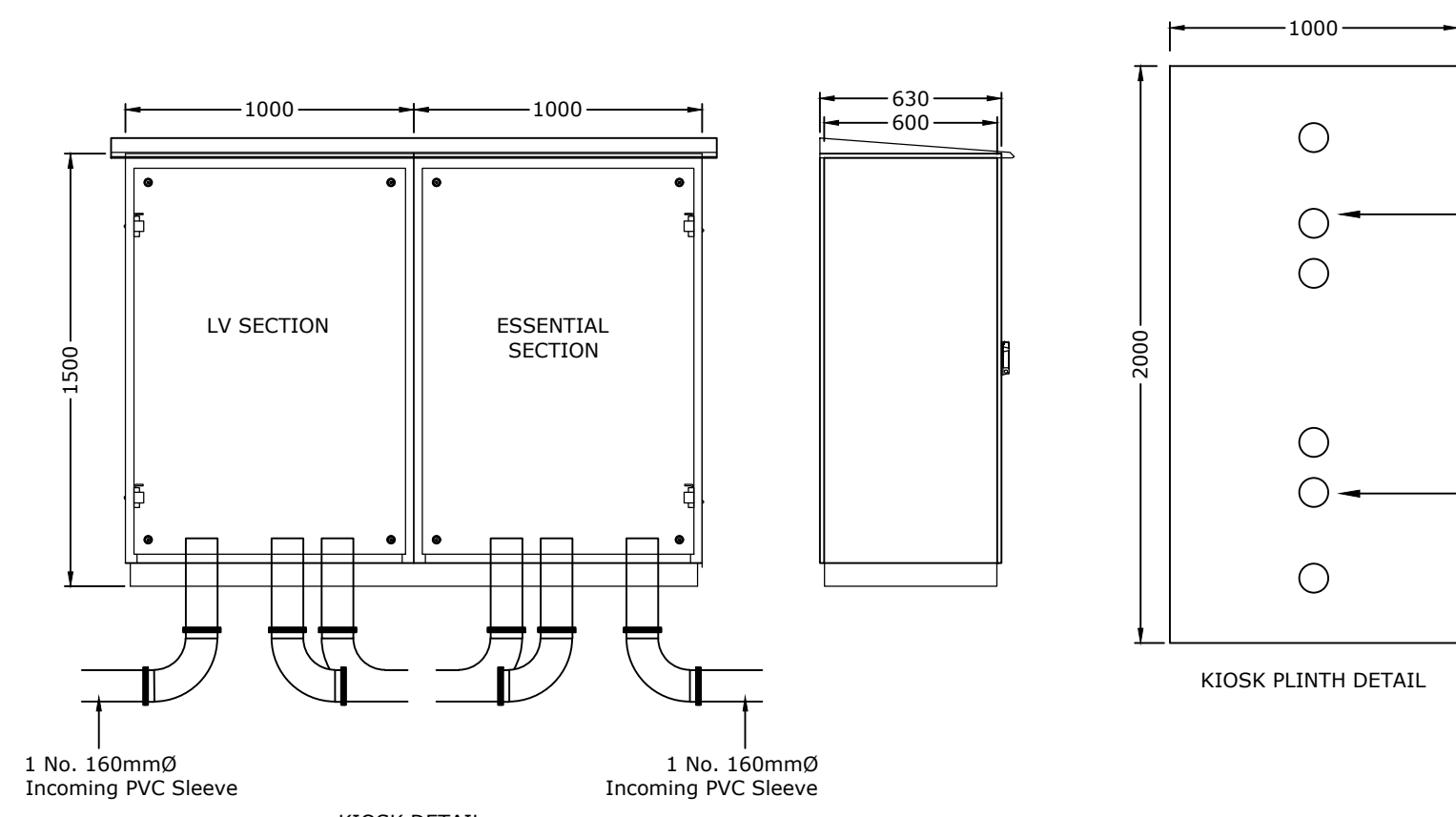
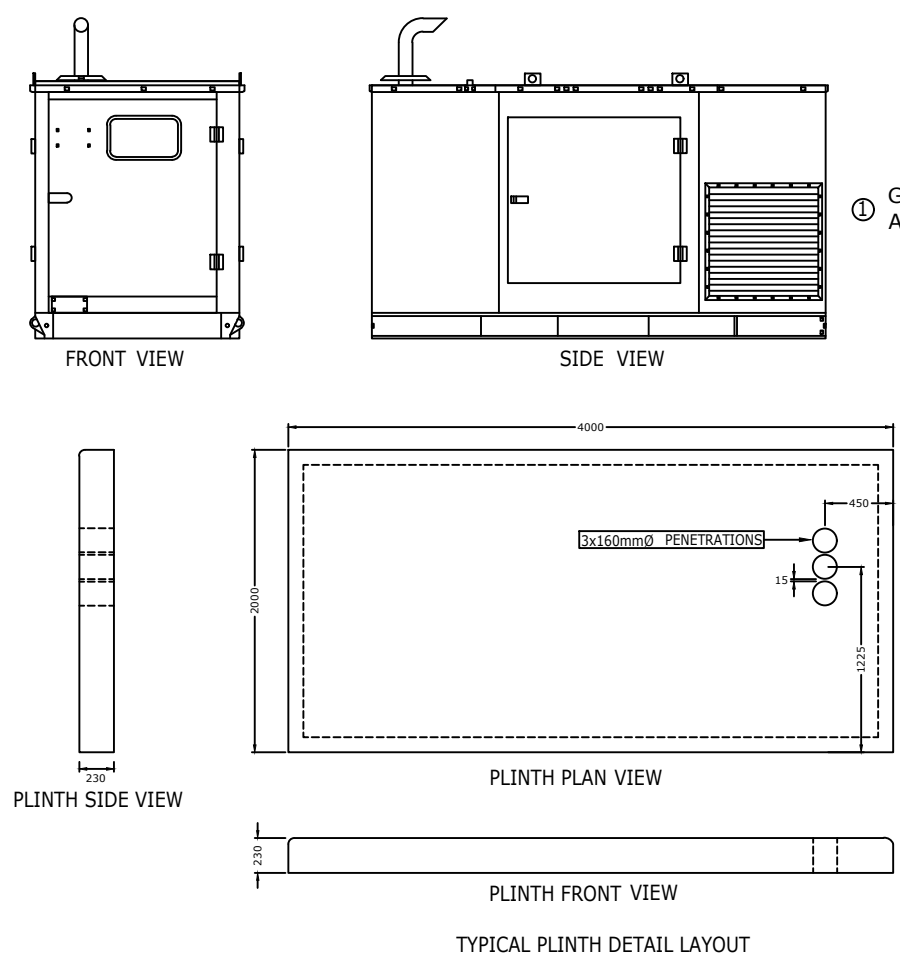
POLE MOUNTED LIGHT DETAIL
SCALE: NTS



STANDARD MANHOLE FOR TELKOM CABLING



STANDARD MANHOLE FOR L.V. CABLING



NOTES: (1) - Contractor to ensure max distance between draw boxes 20 metres notwithstanding anything to contrary.

1. 1000x1000 CONDUIT BOX	2. 1000x1000 CONDUIT BOX AT 1500WPL	3. 1000x1000 CONDUIT BOX AT 1500WPL	4. 1000x1000 CONDUIT BOX AT 1500WPL	5. 1000x1000 CONDUIT BOX AT 1500WPL
6. 1000x1000 CONDUIT BOX AT 1500WPL	7. 1000x1000 CONDUIT BOX AT 1500WPL	8. 1000x1000 CONDUIT BOX AT 1500WPL	9. 1000x1000 CONDUIT BOX AT 1500WPL	10. 1000x1000 CONDUIT BOX AT 1500WPL
11. 1000x1000 CONDUIT BOX AT 1500WPL	12. 1000x1000 CONDUIT BOX AT 1500WPL	13. 1000x1000 CONDUIT BOX AT 1500WPL	14. 1000x1000 CONDUIT BOX AT 1500WPL	15. 1000x1000 CONDUIT BOX AT 1500WPL
16. 1000x1000 CONDUIT BOX AT 1500WPL	17. 1000x1000 CONDUIT BOX AT 1500WPL	18. 1000x1000 CONDUIT BOX AT 1500WPL	19. 1000x1000 CONDUIT BOX AT 1500WPL	20. 1000x1000 CONDUIT BOX AT 1500WPL

21. 1000x1000 CONDUIT BOX AT 1500WPL	22. 1000x1000 CONDUIT BOX AT 1500WPL	23. 1000x1000 CONDUIT BOX AT 1500WPL	24. 1000x1000 CONDUIT BOX AT 1500WPL	25. 1000x1000 CONDUIT BOX AT 1500WPL
26. 1000x1000 CONDUIT BOX AT 1500WPL	27. 1000x1000 CONDUIT BOX AT 1500WPL	28. 1000x1000 CONDUIT BOX AT 1500WPL	29. 1000x1000 CONDUIT BOX AT 1500WPL	30. 1000x1000 CONDUIT BOX AT 1500WPL
31. 1000x1000 CONDUIT BOX AT 1500WPL	32. 1000x1000 CONDUIT BOX AT 1500WPL	33. 1000x1000 CONDUIT BOX AT 1500WPL	34. 1000x1000 CONDUIT BOX AT 1500WPL	35. 1000x1000 CONDUIT BOX AT 1500WPL
36. 1000x1000 CONDUIT BOX AT 1500WPL	37. 1000x1000 CONDUIT BOX AT 1500WPL	38. 1000x1000 CONDUIT BOX AT 1500WPL	39. 1000x1000 CONDUIT BOX AT 1500WPL	40. 1000x1000 CONDUIT BOX AT 1500WPL

(2) - Draw boxes required after every second 90 deg. bend or 180 deg. total of slow bends.

41. 1000x1000 CONDUIT BOX AT 1500WPL	42. 1000x1000 CONDUIT BOX AT 1500WPL	43. 1000x1000 CONDUIT BOX AT 1500WPL	44. 1000x1000 CONDUIT BOX AT 1500WPL	45. 1000x1000 CONDUIT BOX AT 1500WPL
46. 1000x1000 CONDUIT BOX AT 1500WPL	47. 1000x1000 CONDUIT BOX AT 1500WPL	48. 1000x1000 CONDUIT BOX AT 1500WPL	49. 1000x1000 CONDUIT BOX AT 1500WPL	50. 1000x1000 CONDUIT BOX AT 1500WPL
51. 1000x1000 CONDUIT BOX AT 1500WPL	52. 1000x1000 CONDUIT BOX AT 1500WPL	53. 1000x1000 CONDUIT BOX AT 1500WPL	54. 1000x1000 CONDUIT BOX AT 1500WPL	55. 1000x1000 CONDUIT BOX AT 1500WPL
56. 1000x1000 CONDUIT BOX AT 1500WPL	57. 1000x1000 CONDUIT BOX AT 1500WPL	58. 1000x1000 CONDUIT BOX AT 1500WPL	59. 1000x1000 CONDUIT BOX AT 1500WPL	60. 1000x1000 CONDUIT BOX AT 1500WPL

(3) - All univired conduits to be provided with draw wires. These will be withdrawn and checked at random.

61. 1000x1000 CONDUIT BOX AT 1500WPL	62. 1000x1000 CONDUIT BOX AT 1500WPL	63. 1000x1000 CONDUIT BOX AT 1500WPL	64. 1000x1000 CONDUIT BOX AT 1500WPL	65. 1000x1000 CONDUIT BOX AT 1500WPL
66. 1000x1000 CONDUIT BOX AT 1500WPL	67. 1000x1000 CONDUIT BOX AT 1500WPL	68. 1000x1000 CONDUIT BOX AT 1500WPL	69. 1000x1000 CONDUIT BOX AT 1500WPL	70. 1000x1000 CONDUIT BOX AT 1500WPL
71. 1000x1000 CONDUIT BOX AT 1500WPL	72. 1000x1000 CONDUIT BOX AT 1500WPL	73. 1000x1000 CONDUIT BOX AT 1500WPL	74. 1000x1000 CONDUIT BOX AT 1500WPL	75. 1000x1000 CONDUIT BOX AT 1500WPL
76. 1000x1000 CONDUIT BOX AT 1500WPL	77. 1000x1000 CONDUIT BOX AT 1500WPL	78. 1000x1000 CONDUIT BOX AT 1500WPL	79. 1000x1000 CONDUIT BOX AT 1500WPL	80. 1000x1000 CONDUIT BOX AT 1500WPL

(4) - Cast in conduits to be spaced 35mm. minimum.

81. 1000x1000 CONDUIT BOX AT 1500WPL	82. 1000x1000 CONDUIT BOX AT 1500WPL	83. 1000x1000 CONDUIT BOX AT 1500WPL	84. 1000x1000 CONDUIT BOX AT 1500WPL	85. 1000x1000 CONDUIT BOX AT 1500WPL
86. 1000x1000 CONDUIT BOX AT 1500WPL	87. 1000x1000 CONDUIT BOX AT 1500WPL	88. 1000x1000 CONDUIT BOX AT 1500WPL	89. 1000x1000 CONDUIT BOX AT 1500WPL	90. 1000x1000 CONDUIT BOX AT 1500WPL
91. 1000x1000 CONDUIT BOX AT 1500WPL	92. 1000x1000 CONDUIT BOX AT 1500WPL	93. 1000x1000 CONDUIT BOX AT 1500WPL	94. 1000x1000 CONDUIT BOX AT 1500WPL	95. 1000x1000 CONDUIT BOX AT 1500WPL
96. 1000x1000 CONDUIT BOX AT 1500WPL	97. 1000x1000 CONDUIT BOX AT 1500WPL	98. 1000x1000 CONDUIT BOX AT 1500WPL	99. 1000x1000 CONDUIT BOX AT 1500WPL	100. 1000x1000 CONDUIT BOX AT 1500WPL

(5) - Cable number - refer cable schedule for details.

101. 1000x1000 CONDUIT BOX AT 1500WPL	102. 1000x1000 CONDUIT BOX AT 1500WPL	103. 1000x1000 CONDUIT BOX AT 1500WPL	104. 1000x1000 CONDUIT BOX AT 1500WPL	105. 1000x1000 CONDUIT BOX AT 1500WPL
106. 1000x1000 CONDUIT BOX AT 1500WPL	107. 1000x1000 CONDUIT BOX AT 1500WPL	108. 1000x1000 CONDUIT BOX AT 1500WPL	109. 1000x1000 CONDUIT BOX AT 1500WPL	110. 1000x1000 CONDUIT BOX AT 1500WPL
111. 1000x1000 CONDUIT BOX AT 1500WPL	112. 1000x1000 CONDUIT BOX AT 1500WPL	113. 1000x1000 CONDUIT BOX AT 1500WPL	114. 1000x1000 CONDUIT BOX AT 1500WPL	115. 1000x1000 CONDUIT BOX AT 1500WPL
116. 1000x1000 CONDUIT BOX AT 1500WPL	117. 1000x1000 CONDUIT BOX AT 1500WPL	118. 1000x1000 CONDUIT BOX AT 1500WPL	119. 1000x1000 CONDUIT BOX AT 1500WPL	120. 1000x1000 CONDUIT BOX AT 1500WPL

(6) - Cable number - refer cable schedule for details.

121. 1000x1000 CONDUIT BOX AT 1500WPL	122. 1000x1000 CONDUIT BOX AT 1500WPL	123. 1000x1000 CONDUIT BOX AT 1500WPL	124. 1000x1000 CONDUIT BOX AT 1500WPL	125. 1000x1000 CONDUIT BOX AT 1500WPL
126. 1000x1000 CONDUIT BOX AT 1500WPL	127. 1000x1000 CONDUIT BOX AT 1500WPL	128. 1000x1000 CONDUIT BOX AT 1500WPL	129. 1000x1000 CONDUIT BOX AT 1500WPL	130. 1000x1000 CONDUIT BOX AT 1500WPL
131. 1000x1000 CONDUIT BOX AT 1500WPL	132. 1000x1000 CONDUIT BOX AT 1500WPL	133. 1000x1000 CONDUIT BOX AT 1500WPL	134. 1000x1000 CONDUIT BOX AT 1500WPL	135. 1000x1000 CONDUIT BOX AT 1500WPL
136. 1000x1000 CONDUIT BOX AT 1500WPL	137. 1000x1000 CONDUIT BOX AT 1500WPL	138. 1000x1000 CONDUIT BOX AT 1500WPL	139. 1000x1000 CONDUIT BOX AT 1500WPL	140. 1000x1000 CONDUIT BOX AT 1500WPL

Approved in principle
Justin Mckelvie-King
Pr Eng : 20120548

JMK



**Samora Machel Police Station
Electrical Installation**

**Site Plan
Electrical Layout**

PROJECT NO.	DRAWING NO.	SHEET	SCALE
32308	001	1	1:200
FILE: 32308_001	LAYERS:	REV	0