



NOTE

All work must strictly adhere to the specified dimensions and comply with National Building Regulations SANS 10400. Prior to the commencement of any work, on-site verification of dimensions and levels is mandatory. **Confirmation of dimensions on-site is required before the production of shop drawings or the manufacturing of any component. Similarly, confirmation of dimensions on-site is essential before placing orders for any components.** Drawings should be interpreted in conjunction with details, schedules, drainage drawings, internal elevations, and other specialist drawings. In the event of conflicting information, it is imperative to refer such discrepancies to the architect, exhibition designers, and responsible consultants prior to initiating construction.



Iziko Reusable Movable Gallery Walls

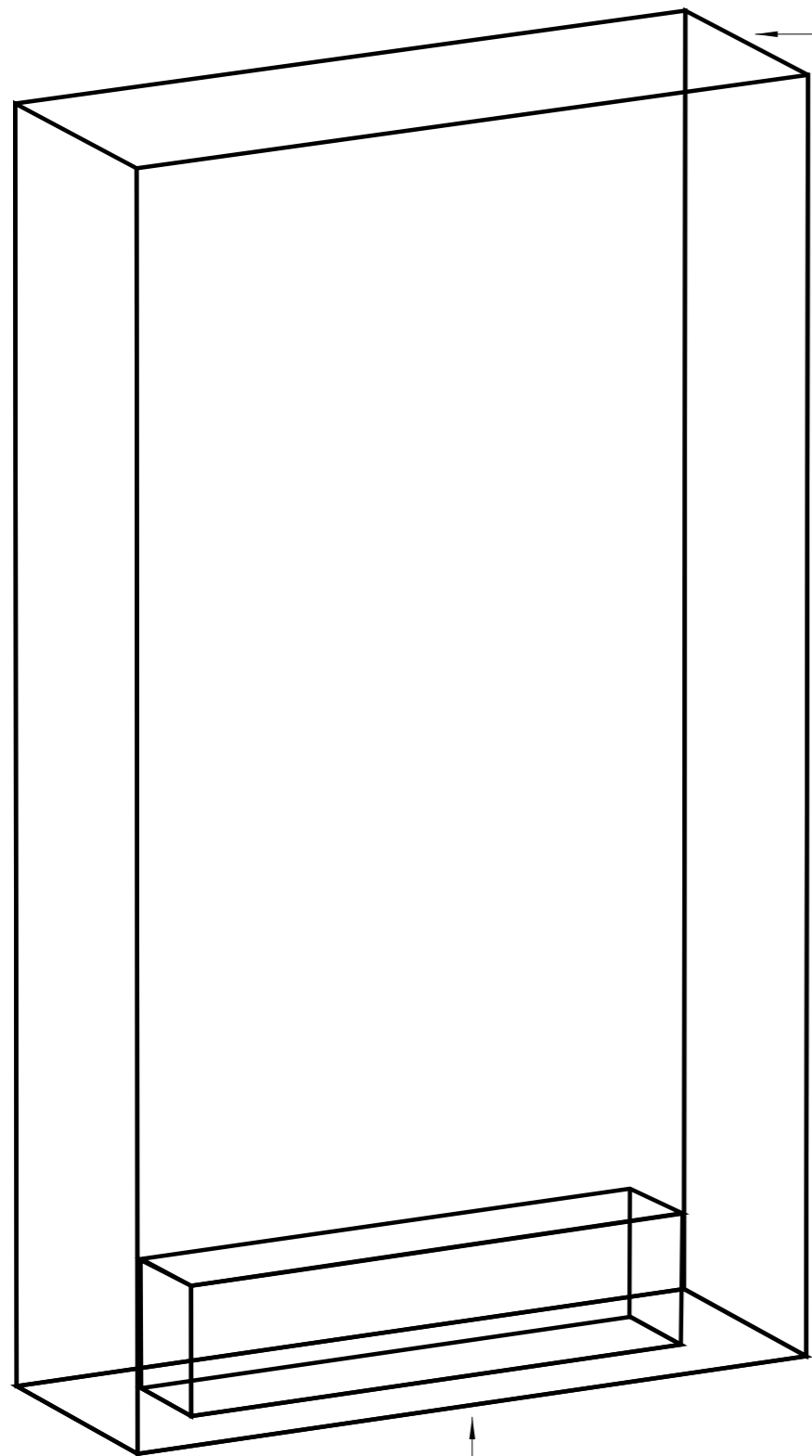
Inspiration

Issued for Construction 2024/09/17

By Iziko Museums of South Africa EDP Unit

Page size: A3 [297 X 420]

Scale: As indicated



Wall element 1

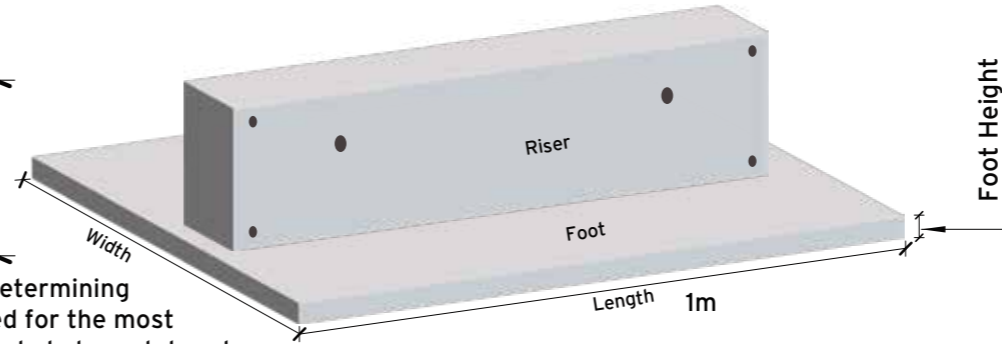
10-12mm plywood wall panel.
Closed top
Opening at bottom, made to fit tightly over the base, and secured with hex-threaded nuts. Base hole to be stabilized internally with timber support frame to ensure a tight fit.
Painted with water-based paint as per layout.

Closed top

The supplier is responsible for determining the **full base height** ensuring it is optimized for the most stable and secure design

The supplier is responsible for determining the **width** ensuring it is optimized for the most stable and secure design. Preferable to match or be smaller than the gallery edging @ 700mm

Full Base Height



The supplier is responsible for determining the **foot height** ensuring it is optimized for the most stable and secure design, as per heavy duty steel sheet options



Base 1

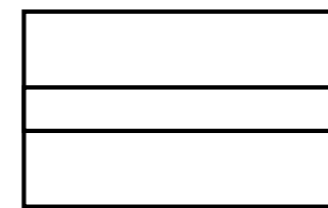
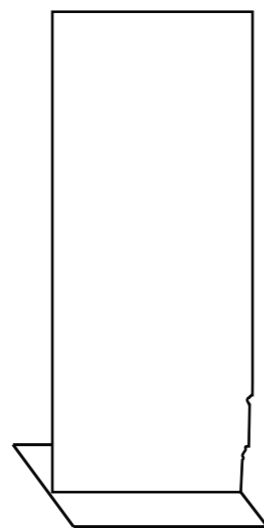
Heavy durable base panel with 4x hex-threaded insert nuts to secure top wall to base

For portability and storage efficiency, all bases to be max 1m, and fitted with two additional holes so that they can be lifted by block and tackle.

Heavy-duty steel for the base.
Cost two options
Option 1:
Heavy-duty steel for the entire base.

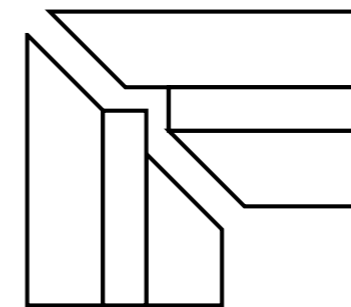
Option 2:
Heavy-duty steel for the foot and a cheaper durable material for riser.

Spray finish black to match gallery floors.



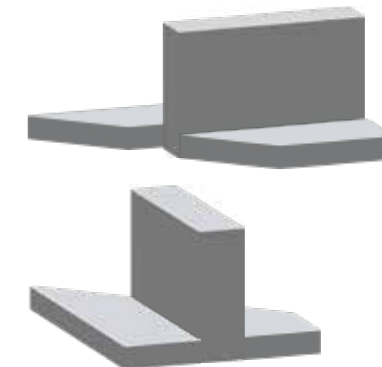
Base 1

Top view
Straight



Corner Base

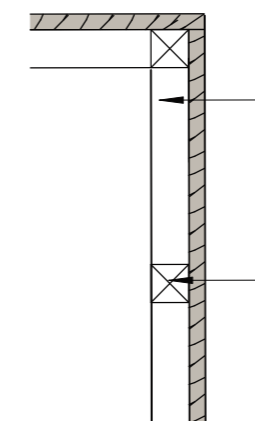
Top view
Corner edges
Male and Female
These can be fabricated after installation as they will not be used for first exhibition



Isometric view
Corner edges
Male and Female

Wall element 2

Front view
Additional wall to fit against the gallery corncing.



Timber support frame made of +/- 50mm x 50mm timber elements

Timber support also placed at 2x intervals along vertical planes, for reinforcement with hanging objects. 800mm from floor and 2000mm from floor.

NOTE

All work must strictly adhere to the specified dimensions and comply with National Building Regulations SANS 10400. Prior to the commencement of any work, on-site verification of dimensions and levels is mandatory. **Confirmation of dimensions on-site is required before the production of shop drawings or the manufacturing of any component. Similarly, confirmation of dimensions on-site is essential before placing orders for any components.** Drawings should be interpreted in conjunction with details, schedules, drainage drawings, internal elevations, and other specialist drawings. In the event of conflicting information, it is imperative to refer such discrepancies to the architect, exhibition designers, and responsible consultants prior to initiating construction.



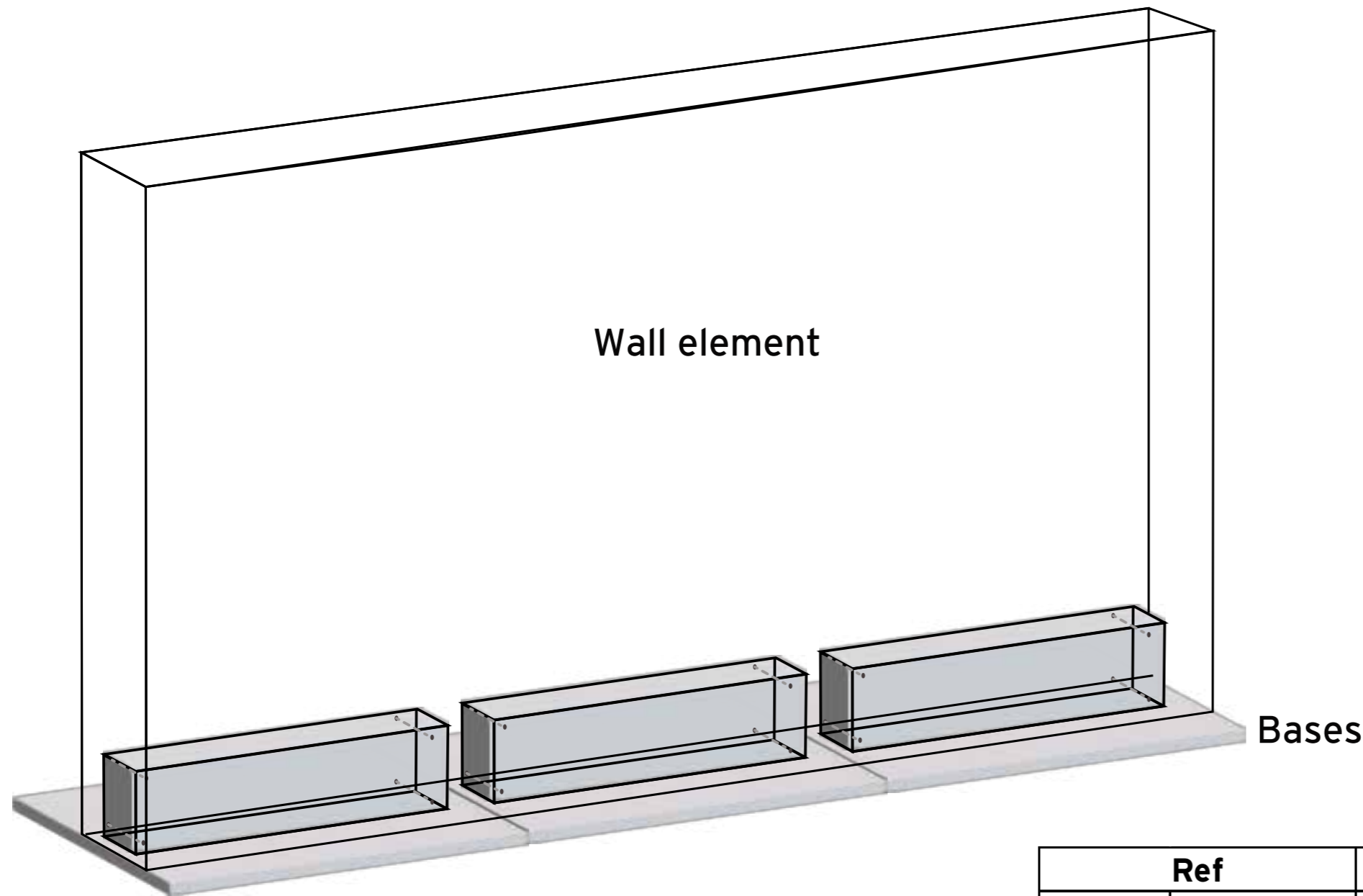
Iziko Reusable Movable Gallery Walls

Issued for Construction
2024/09/17

By Iziko Museums of South Africa
EDP Unit

Page size: A3 [297 X 420]

Scale: As indicated



Assembly

Wall element to fit tightly over the base (or bases), and secured with hex-threaded nuts

	Ref	Qty.	Width	Height
Wall 1	Size A	2	2500	2400
Wall 1	Size B	4	2000	2400
Wall 1	Size C	1	3000	2400
Wall 1	Size D	3	3500	2400
Wall 2	Size E	2	261	2400
	Ref	Qty.	Length	
Base 1		24	1000	As per annexure
Base 2		6	500	As per annexure
Base 3		2	250	As per annexure
Corner Base Female		2	1000	As per annexure
Corner Base Male		2	1000	As per annexure

NOTE

All work must strictly adhere to the specified dimensions and comply with National Building Regulations SANS 10400. Prior to the commencement of any work, on-site verification of dimensions and levels is mandatory.

Confirmation of dimensions on-site is required before the production of shop drawings or the manufacturing of any component. Similarly, confirmation of dimensions on-site is essential before placing orders for any components.

Drawings should be interpreted in conjunction with details, schedules, drainage drawings, internal elevations, and other specialist drawings. In the event of conflicting information, it is imperative to refer such discrepancies to the architect, exhibition designers, and responsible consultants prior to initiating construction.



Iziko Reusable Movable Gallery Walls

Issued for Construction
2024/09/17

By Iziko Museums of South Africa
EDP Unit

Page size: A3 [297 X 420]

Scale: As indicated