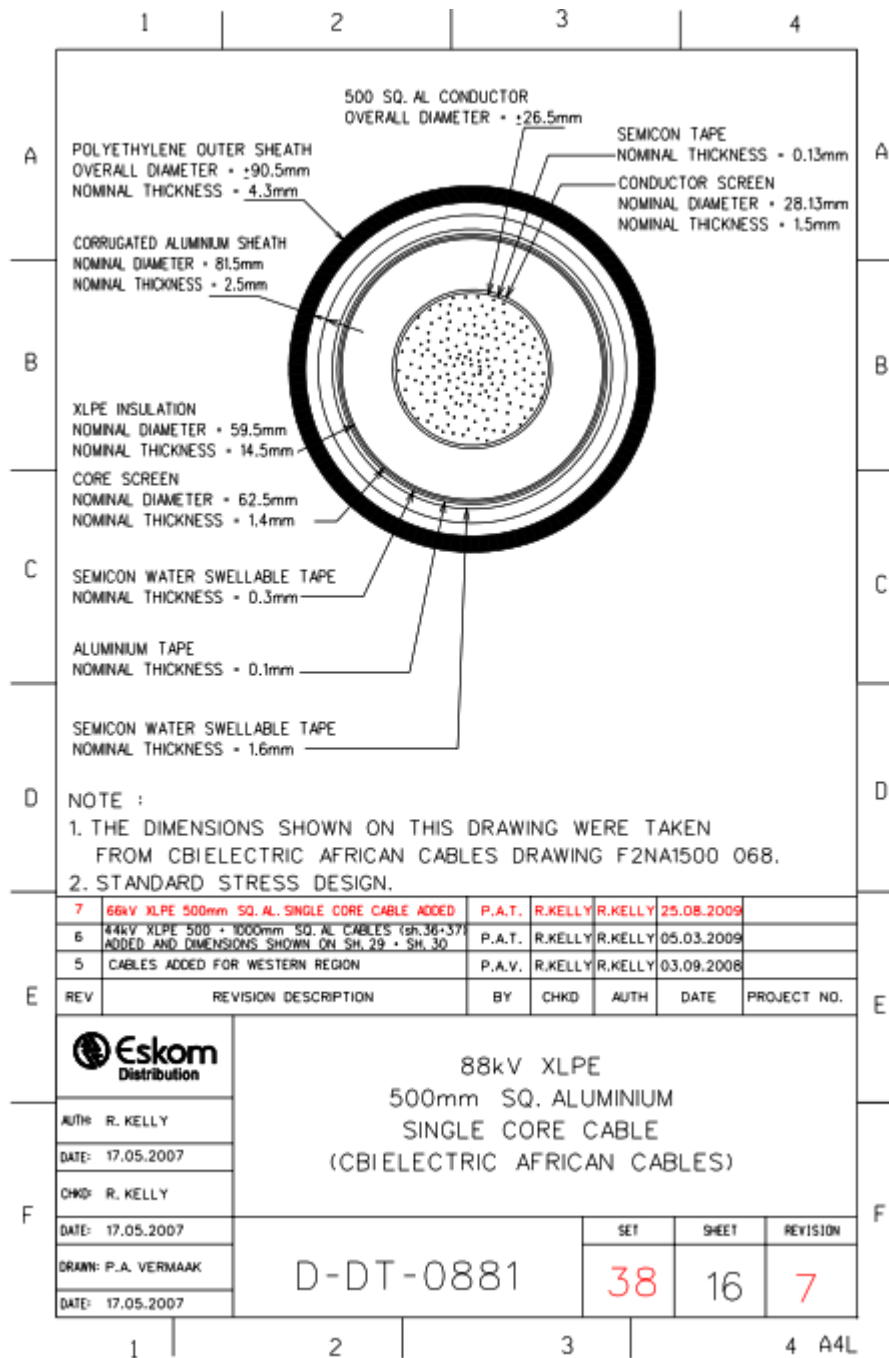


NOTE :

1. THE DIMENSIONS SHOWN ON THIS DRAWING WERE TAKEN FROM AN ACTUAL CABLE OFF-CUT FROM THE UVONGO - MONTREAUX FEEDER.
2. CABLE SHEATH MARKING "2XS(FL)2Y-51/88 (MAX.97) kV 1 x 240/90mm"
3. ALUMINIUM POLYETHYLENE LAMINATE (APL) SHEATH DESIGN.
4. MANUFACTURED BY FULGOR CABLE.

7	66kV XLPE 500mm SQ. AL. SINGLE CORE CABLE ADDED	P.A.T.	R.KELLY	R.KELLY	25.08.2009	
6	44kV XLPE 500 • 1000mm SQ. AL CABLES (sh.36•37) ADDED AND DIMENSIONS SHOWN ON SH. 29 • SH. 30	P.A.T.	R.KELLY	R.KELLY	05.03.2009	
5	CABLES ADDED FOR WESTERN REGION	P.A.V.	R.KELLY	R.KELLY	03.09.2008	
REV	REVISION DESCRIPTION	BY	CHKD	AUTH	DATE	PROJECT NO.

	88kV XLPE 240mm SQ. COPPER SINGLE CORE CABLE WITH APL SHEATH FULGOR CABLE				
	AUTH: R. KELLY				
	DATE: 17.05.2007				
	CHKD: R. KELLY				
	DATE: 17.05.2007				
DRAWN: P.A. VERMAAK DATE: 17.05.2007	D-DT-0881		38	15	7
		SET	SHEET	REVISION	



D NOTE :

1. THE DIMENSIONS SHOWN ON THIS DRAWING WERE TAKEN FROM CBIELECTRIC AFRICAN CABLES DRAWING F2NA1500 068.
2. STANDARD STRESS DESIGN.

7	66kV XLPE 500mm SQ. AL. SINGLE CORE CABLE ADDED	P.A.T.	R.KELLY	R.KELLY	25.08.2009	
6	44kV XLPE 500 + 1000mm SQ. AL CABLES (sh.36-37) ADDED AND DIMENSIONS SHOWN ON SH. 29 + SH. 30	P.A.T.	R.KELLY	R.KELLY	05.03.2009	
5	CABLES ADDED FOR WESTERN REGION	P.A.V.	R.KELLY	R.KELLY	03.09.2008	

REV	REVISION DESCRIPTION	BY	CHKD	AUTH	DATE	PROJECT NO.
-----	----------------------	----	------	------	------	-------------

	88kV XLPE 500mm SQ. ALUMINIUM SINGLE CORE CABLE (CBIELECTRIC AFRICAN CABLES)					
	AUTH: R. KELLY					
	DATE: 17.05.2007					
	CHKD: R. KELLY					
F	D-DT-0881		SET	SHEET	REVISION	
			38	16	7	