

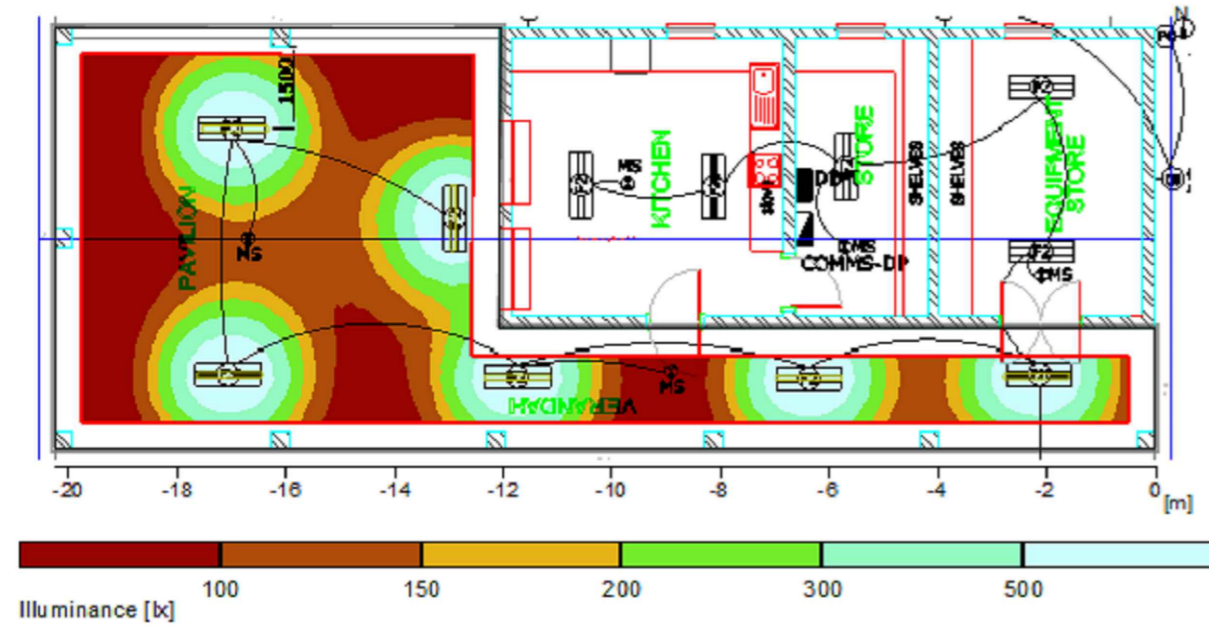
Object : Trompsburg
 Installation : tuck shop
 Project number : CE0092
 Date : 19.03.2020



1 pavilion

1.1 Summary, pavilion

1.1.1 Result overview, Evaluation area 1



General		Average indirect fraction	1.80 m
Calculation algorithm used		Height of luminaire plane	0.80
Height of luminaire plane		Maintenance factor	
Maintenance factor		Total luminous flux of all lamps	29700.00 lm
Total luminous flux of all lamps		Total power	204.0 W
Total power		Total power per area (89.53 m ²)	2.28 W/m ² (0.95 W/m ² /100lx)
Total power per area (89.53 m ²)			

Evaluation area 1	Reference plane 1.1
Horizontal	Horizontal
Em	241 lx
Emin	35 lx
Emin/Em (Uo)	0.14
Emin/Emax (Ud)	0.04
Position	0.75 m

Major surfaces	Em	Uo
M 1.7 (Ceiling)	63.7 lx	0.39
M 1.1 (Wall)	199 lx	0.25
M 1.2 (Wall)	188 lx	0.16
M 1.3 (Wall)	94.9 lx	0.38
M 1.4 (Wall)	56.1 lx	0.74
M 1.5 (Wall)	153 lx	0.27

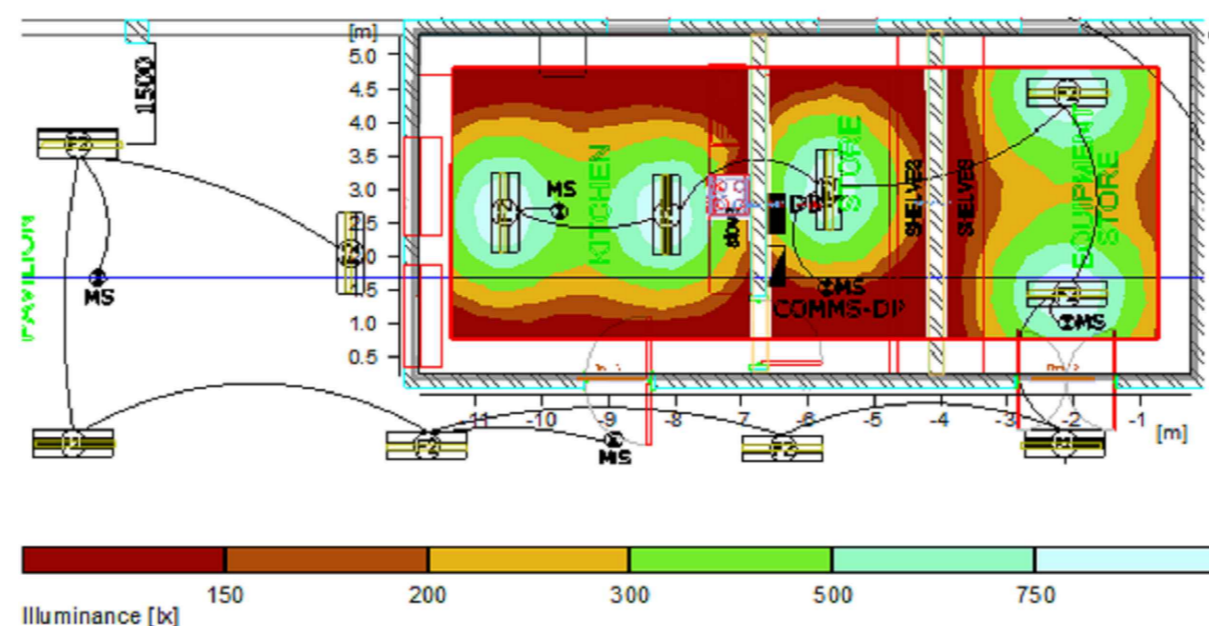
Object : Trompsburg
 Installation : tuck shop
 Project number : CE0092
 Date : 19.03.2020



2 kitchen and stores

2.1 Summary, kitchen and stores

2.1.1 Result overview, Evaluation area 1



General		Average indirect fraction	1.80 m
Calculation algorithm used		Height of luminaire plane	0.80
Height of luminaire plane		Maintenance factor	
Maintenance factor		Total luminous flux of all lamps	24750.00 lm
Total luminous flux of all lamps		Total power	170.0 W
Total power		Total power per area (58.77 m ²)	2.89 W/m ² (0.85 W/m ² /100lx)
Total power per area (58.77 m ²)			

Evaluation area 1	Reference plane 1.1
Horizontal	Horizontal
Em	338 lx
Emin	59 lx
Emin/Em (Uo)	0.17
Emin/Emax (Ud)	0.07
UGR (9.1H 20.8H)	<=26.6
Position	0.75 m (rot: 0°/0.03°)

Major surfaces	Em	Uo
M 1.5 (Ceiling)	83.8 lx	0.37
M 1.1 (Wall)	140 lx	0.34
M 1.2 (Wall)	179 lx	0.37
M 1.3 (Wall)	119 lx	0.07
M 1.4 (Wall)	138 lx	0.58

LIGHTING LEGEND

- ELECTRICAL DISTRIBUTION BOARD
- (F1) 1230mm 2x 18W LED OPEN CHANNEL BATTEN LUMINAIRE C/W ECG.
- (F1E) AS ABOVE BUT WITH EMG BATTERY BACKUP (50% FOR 1HR) AND SELF TEST INVERTER.
- (F2) 1230mm 35W LED BATTEN LUMINAIRE WITH COVER
- (F2E) AS ABOVE BUT WITH EMG BATTERY BACKUP (50% FOR 1HR) AND SELF TEST INVERTER.
- (D1) 14W LED DOWNLIGHTER.
- (B) WALL MOUNTED LED BULKHEAD FITTING WITH 24W LED LAMP.
- (B) CEILING / SOFFIT MOUNTED LED BULKHEAD FITTING WITH 24W LED LAMP.
- (BE) AS ABOVE BUT WITH EMG BATTERY BACKUP (50% FOR 1HR) AND SELF TEST INVERTER.
- MOTION SENSOR FOR CONTROL OF LOCAL LIGHTING (SET TO 30min).
- LIGHT SWITCH MOUNTED AT 1000mm AFFL TO CENTRE 100mm AWAY FROM DOOR FRAME.

No.	DATE	AMENDMENT	
A	11/5/21	ISSUED FOR TENDER	D.A.
B	1/10/21	UPDATED FOR TENDER	D.A.

Copyright vests in the Department of Public Works

as-built drawings

certified as-built drawings as per Centralised Drawing Archive AS-BUILT DRAWING REQUIREMENTS

name: _____

date: _____

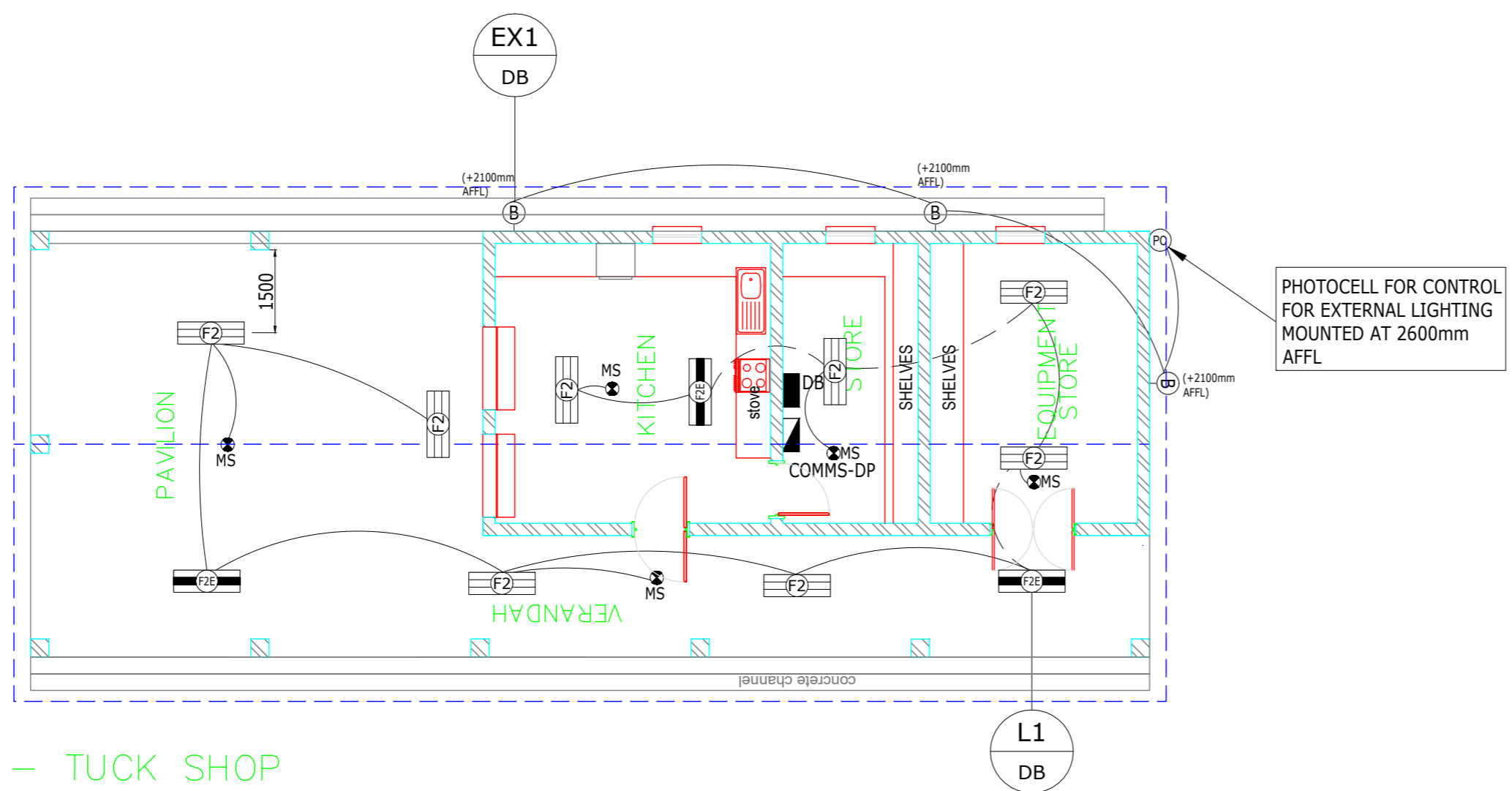
professional registration no.: _____

cad file name: E6(11)(b) page type: A 2

public works
 Department: Public Works
 REPUBLIC OF SOUTH AFRICA

DIRECTOR-GENERAL
 MR. MZIWONKE DLABANTU

consultant	
discipline	ELECTRICAL
service	
TROMPSBURG SPECIAL NEEDS SCHOOL ELECTRICAL AND ELECTRONIC	
WCS number	EDIT
drawing title	TYPICAL TUCK SHOP LIGHTING LAYOUT
ref.no.	EDIT
scale	1:100
date	2018.11.02
DPW drawing number	E6(11)(b)



Plan – TUCK SHOP
 LIGHTING LAYOUT
 1:100

TENDER

RS