

LEGEND EXISTING UNDERGROUND SERVICES ARE AS SHOWN BELOW

NEW WATER MAIN & VALVES	---
ABANDONED WATERMAIN	---
WATER MAINS AND VALVES	---
GRAVITY SEWERS AND M.F.S	---
SEWER RISING MAIN	---
STORM WATER DRAINS AND M.F.S	---
SUBSOIL DRAINS	---
ELECTRICITY CABLES	---
RMU (2R) (3R) (4R) & 315kVa MINI SUB	---
3 x 160mm Ø PVC SLEEVES FOR ELEC	---
TELKOM CABLES (160mm Ø DUCT)	---
FIBRE (OTHER TELCOM 160mm Ø DUCT)	---
CCTV CABLES (110mm Ø DUCT)	---
CCTV MAST, KIOSK & MANHOLE	---
160mm Ø GENERAL DUCT	---
ROAD EDGE	---

CONSTRUCTION INFORMATION

MAINLAYER	
START DATE	
FINISH DATE	
W/O NUMBER	
LEVEL OF SERVICE	
SUPERVISOR NAME	
CONTACT NUMBER	
DATE SENT TO GIS	
DATE RECEIVED	
NAME	

NOTES:
 1. CONTRACTOR TO CONTACT RELEVANT AUTHORITIES AT LEAST 14 DAYS IN ADVANCE PRIOR TO WORKING IN THE VICINITY OF KNOWN SERVICES.

0	JULY 2024	ISSUED FOR CONSTRUCTION
B	JUNE 2024	ISSUED FOR TENDER
A	SEPT 2021	ISSUED FOR SIGNATURE

Revision

Revision	Date	Description

DATE: _____ ENGINEER: _____ NORTH POINT

DATE	SIGNATURE

NOTE: Only underground services affected by new construction are shown. Care must be taken during excavations for road foundations, trenches etc. to avoid damage to underground services such as sewers, drains, cables, water mains and connections. Wherever possible these must be located before work begins.

Contract No. **WS 7837**

Project No. **X6714**

Planning Unit **WEST HAMMARSDALE - STERKSPRUIT**

Ward No. **103 and 4**

Project Title **HAMMARSDALE HIGH LEVEL RESERVOIR INLET (PHASE 2)**

Drawing Title **STANDARD DRAWING OF GRP ACCESS LADDER AND SAFETY CAGE**

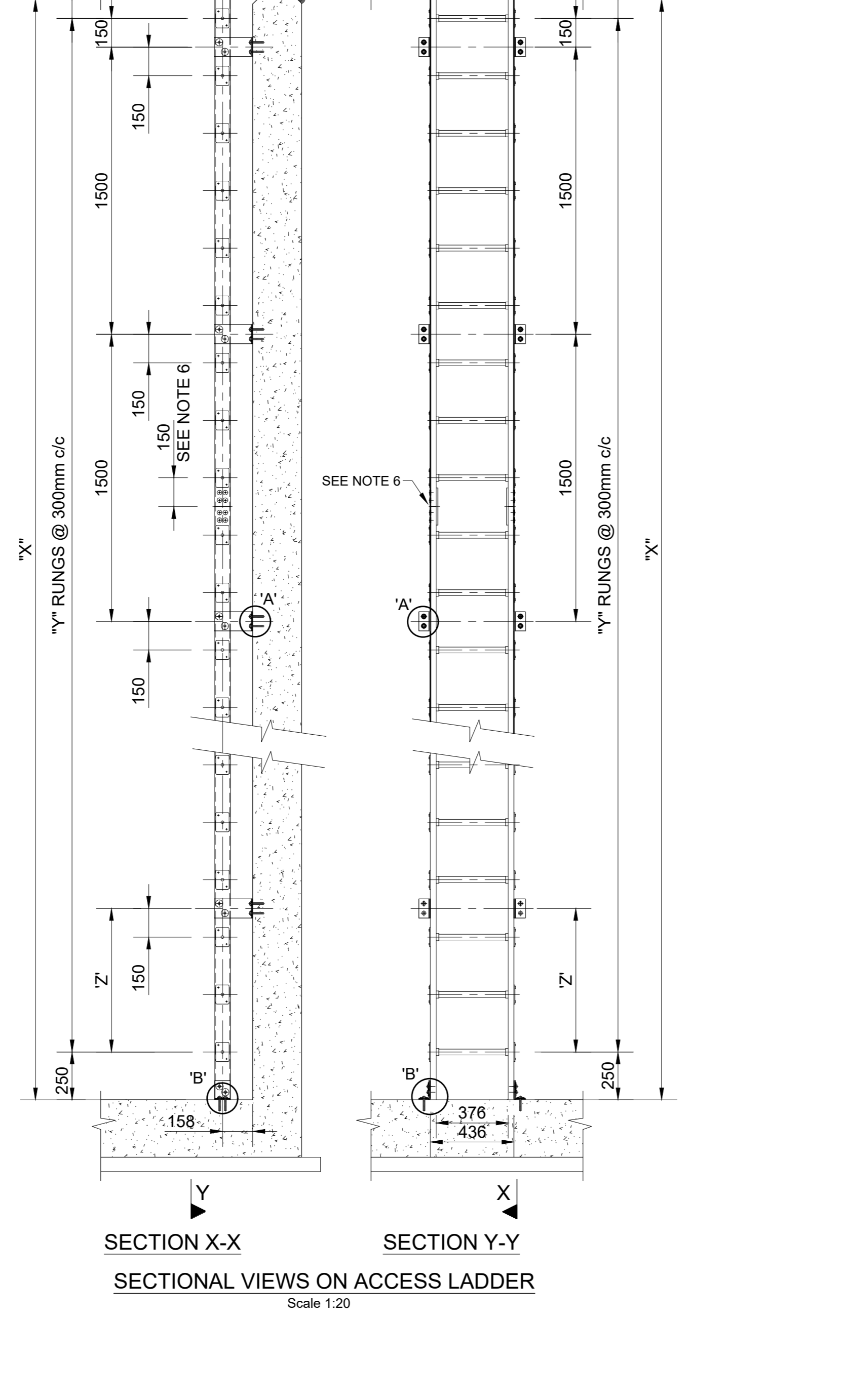
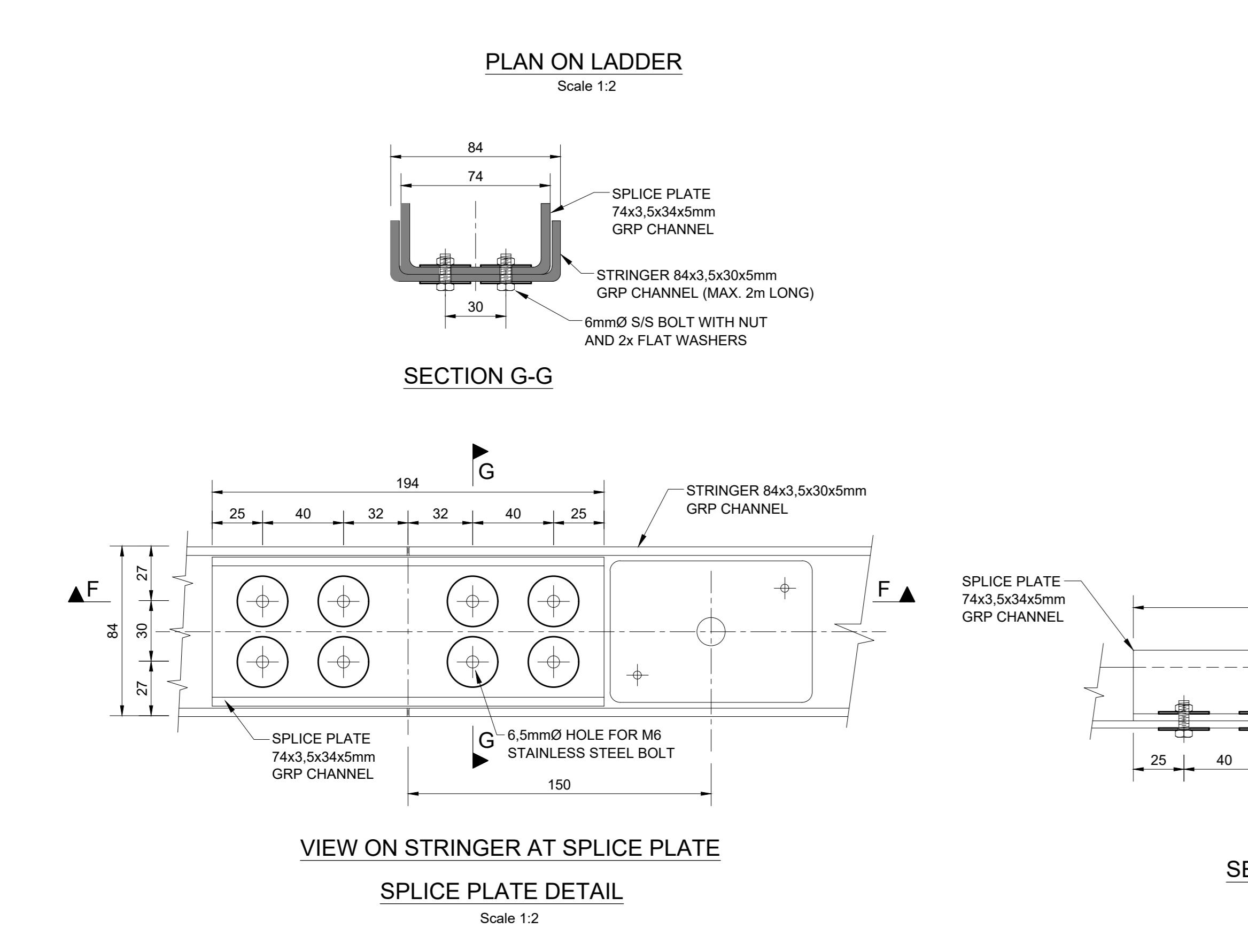
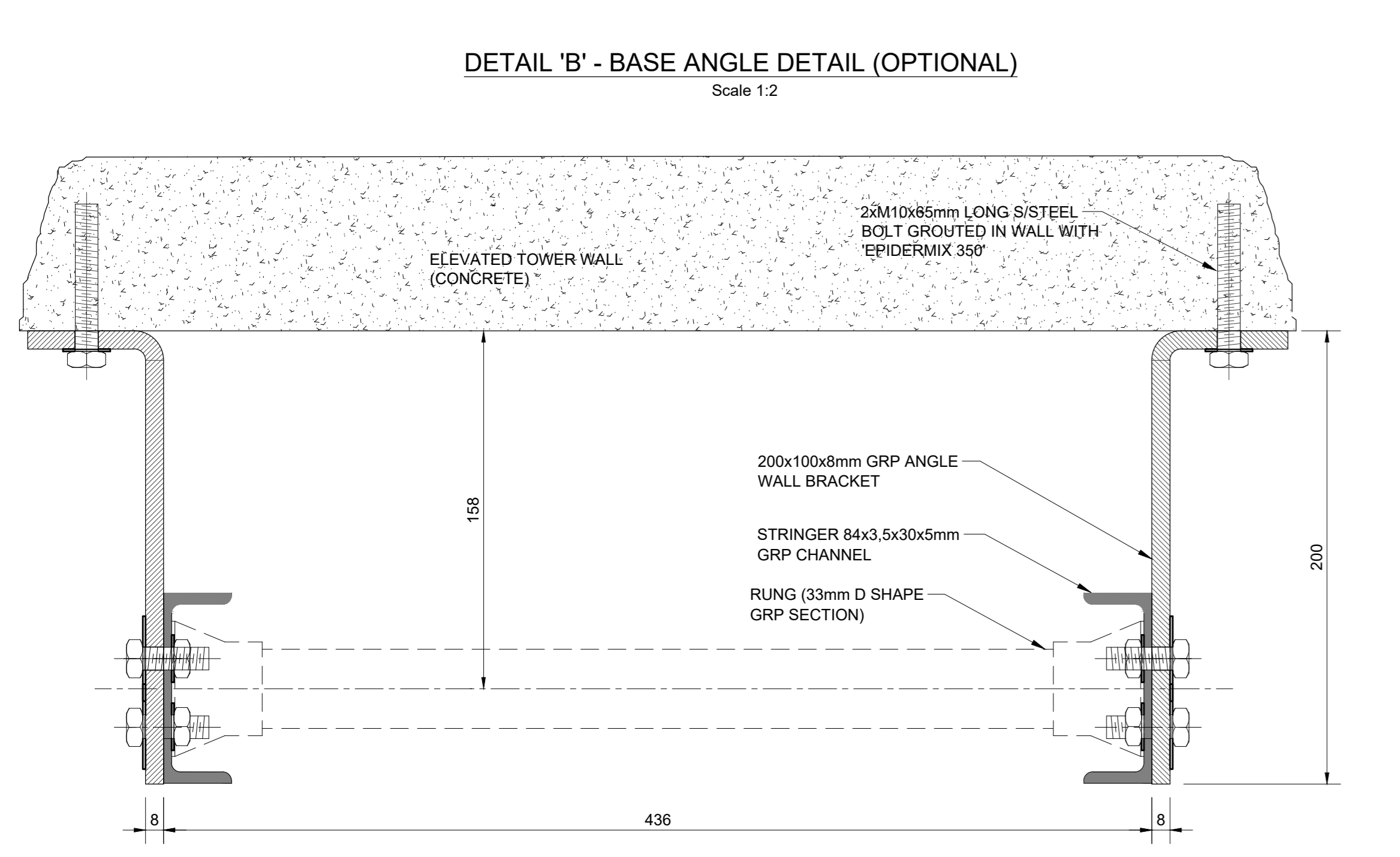
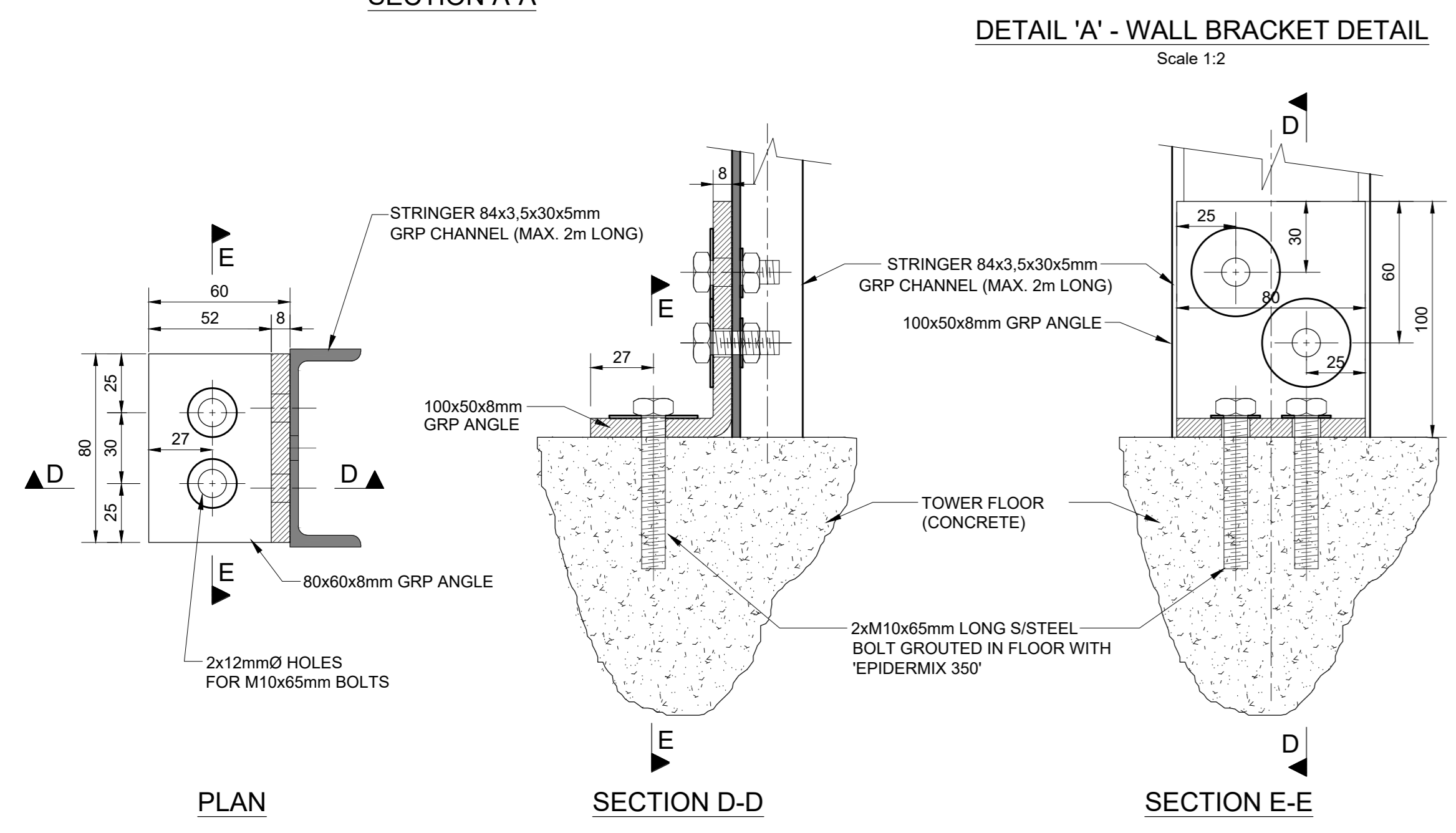
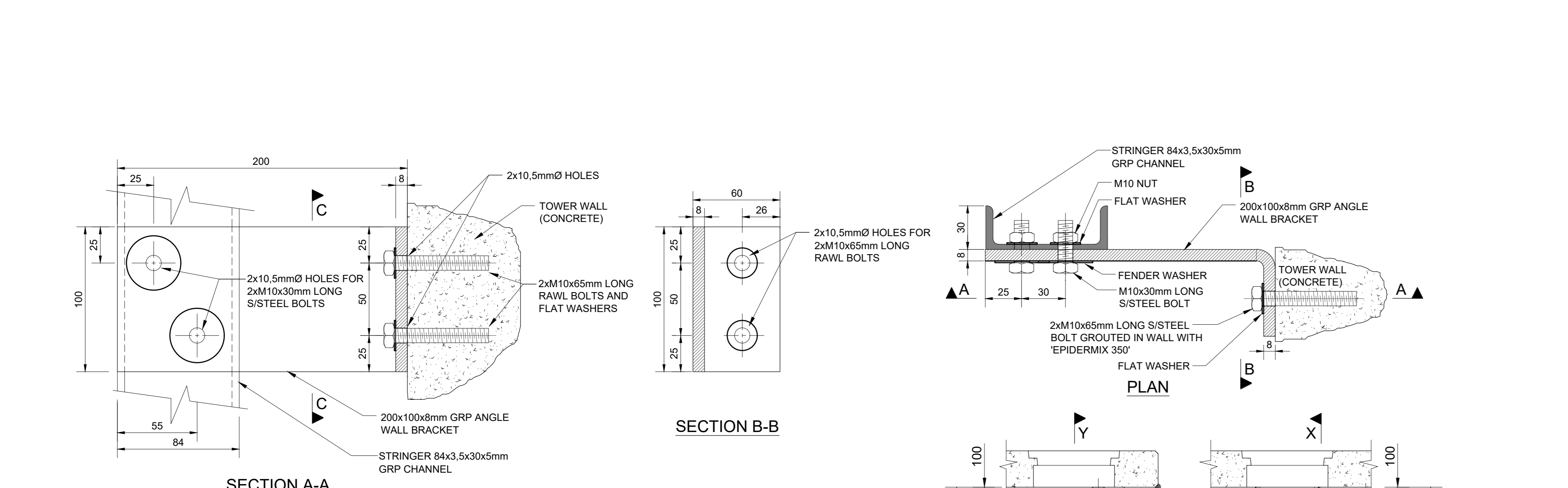
PLAN, SECTION AND DETAILS

Scale: AS SHOWN
 Designed: A.C.M Date: SEPT 2021
 Checked: _____ Drawn: P.T. NGIDI

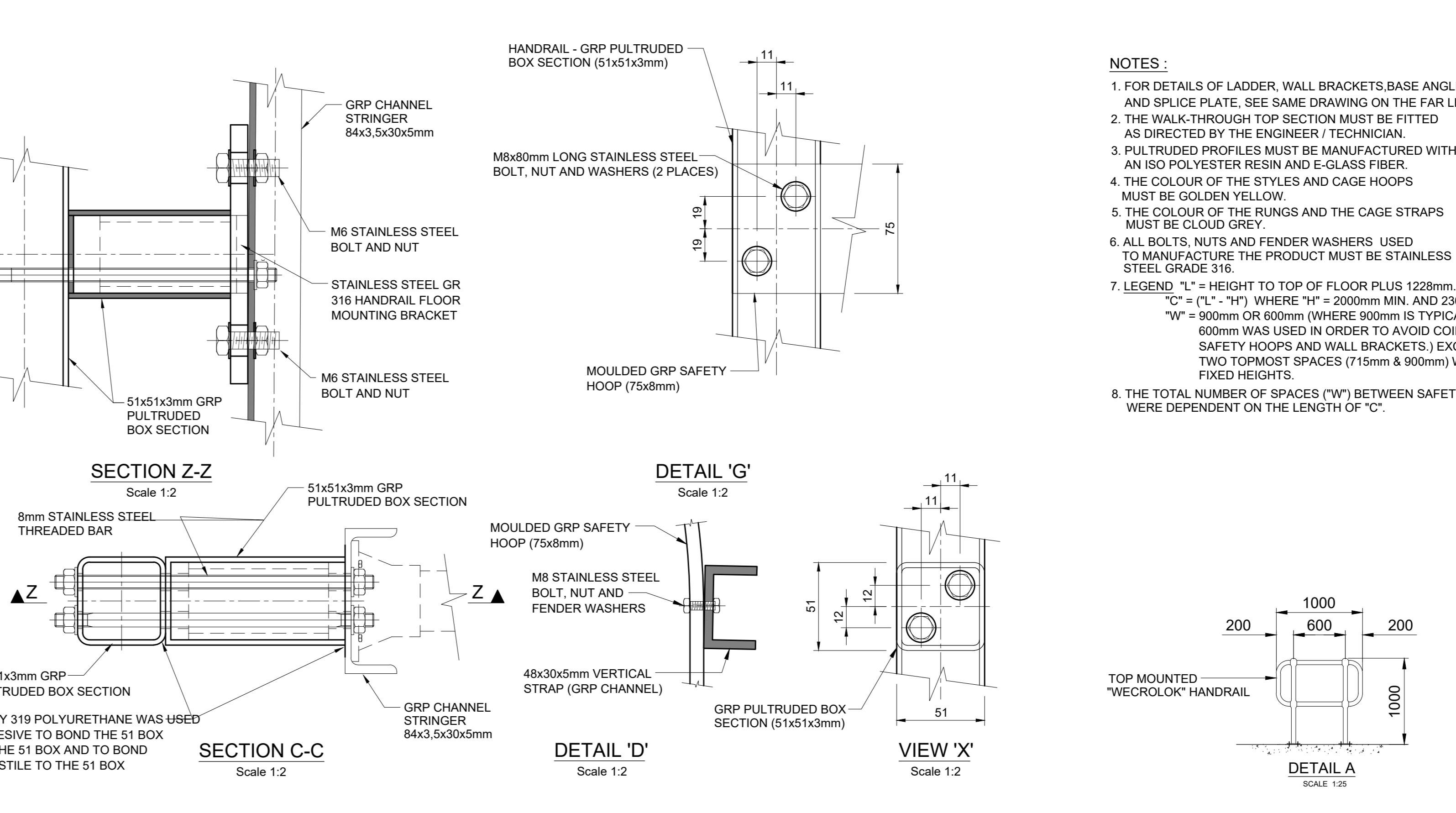
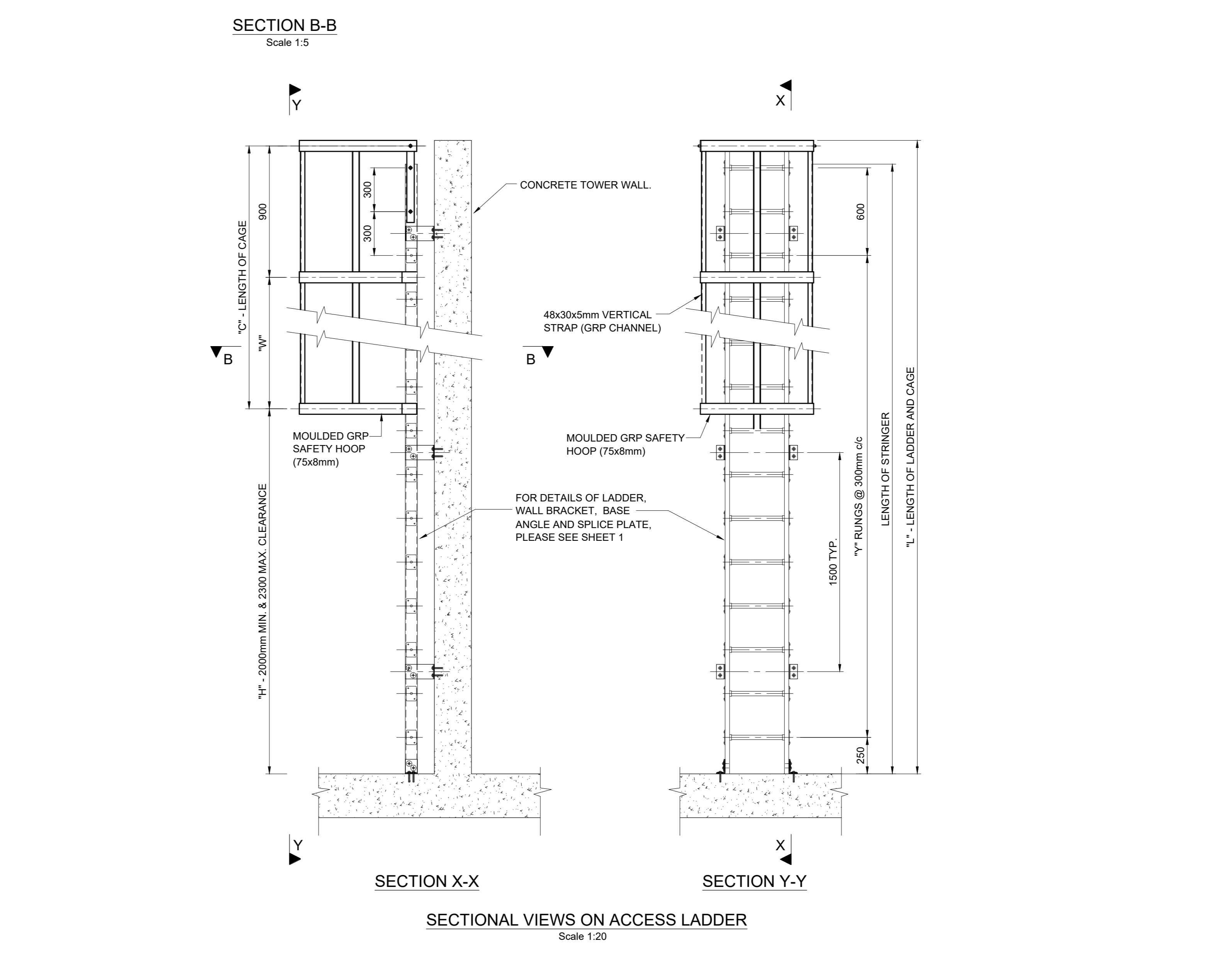
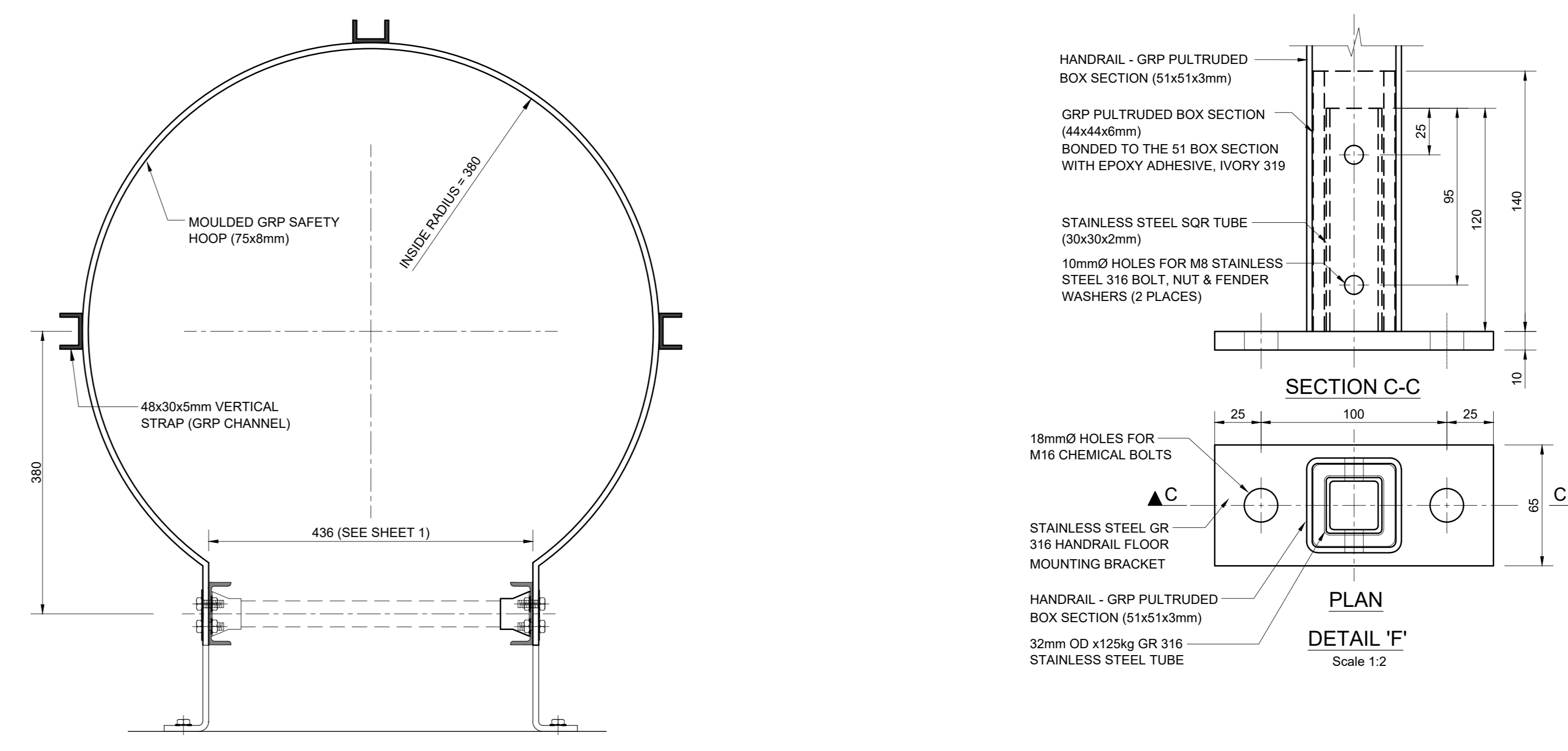
Area Engineer
 Manager (Water Design)
 Deputy Head (Engineering)

E. MSWELI - Head (W & S)
 Drawing No. **56724** Sheet **23/23** Rev. **0**

FOR CONSTRUCTION



NOTES:
 1. THE TOPMOST RUNG MUST BE 300mm OR LESS BELOW TOP OF FLOOR.
 2. THE FIRST SUPPORT BRACKET MUST BE 150mm BELOW THE TOPMOST RUNG.
 3. SUPPORT BRACKETS MUST BE SPACED AT 1500mm CENTERS.
 4. THE MAXIMUM LENGTH OF EACH STRINGER MUST NOT BE MORE THAN 2000mm.
 5. LEGEND: "Y" = HEIGHT FROM TOP OF FLOOR TO SOFFIT OF ROOF
 "X" = HEIGHT FROM TOP OF FLOOR TO LOWEST SUPPORT
 "Z" = HEIGHT FROM BOTTOM RUNG TO LOWEST SUPPORT
 NOTE: "Z" MUST NOT EXCEED 1500mm.
 6. IF THE HEIGHT OF THE LADDER WAS MORE THAN 2000mm, SPLICE PLATES MUST BE USED TO JOIN THE SECTIONS (SEE SPLICE PLATE DETAIL).
 7. BASE PLATE SHOULD BE USED AS AN OPTION ONLY WHEN REQUIRED.
 8. WHERE A LADDER USED WAS MORE THAN 2.3m ABOVE GROUND LEVEL OR PLATFORM, A SAFETY CAGE WILL BE REQUIRED.



NOTES:
 1. FOR DETAILS OF LADDER, WALL BRACKETS, BASE ANGLE AND SPLICE PLATE, SEE SAME DRAWING ON THE FAR LEFT SIDE.
 2. THE WALK-THROUGH TOP SECTION MUST BE FITTED AS DIRECTED BY THE ENGINEER/TECHNICIAN.
 3. PULTRUDED PROFILES MUST BE MANUFACTURED WITH AN ISO POLYESTER RESIN AND E-GLASS FIBER.
 4. THE COLOUR OF THE STYLES AND CAGE HOOPS MUST BE GOLDEN YELLOW.
 5. THE COLOUR OF THE RINGS AND THE CAGE STRAPS MUST BE GOLDEN GREY.
 6. ALL BOLTS, NUTS AND FENDER WASHERS USED TO MANUFACTURE THE PRODUCT MUST BE STAINLESS STEEL GRADE 316.
 7. LEGEND: "L" = HEIGHT TO TOP OF FLOOR PLUS 1228mm
 "C" = ("L" - "H") WHERE "H" = 2000mm MIN. AND 2300mm MAX.
 "W" = 900mm OR 600mm (WHERE 900mm IS TYPICAL HEIGHT AND 600mm WAS USED IN ORDER TO AVOID CONCURRENCE BETWEEN SAFETY HOOPS AND WALL BRACKETS) EXCEPT FOR THE TWO TOPMOST SPACES (715mm & 900mm) WHICH HAVE FIXED HEIGHTS.
 8. THE TOTAL NUMBER OF SPACES ("W") BETWEEN SAFETY HOOPS WERE DEPENDENT ON THE LENGTH OF "C".

