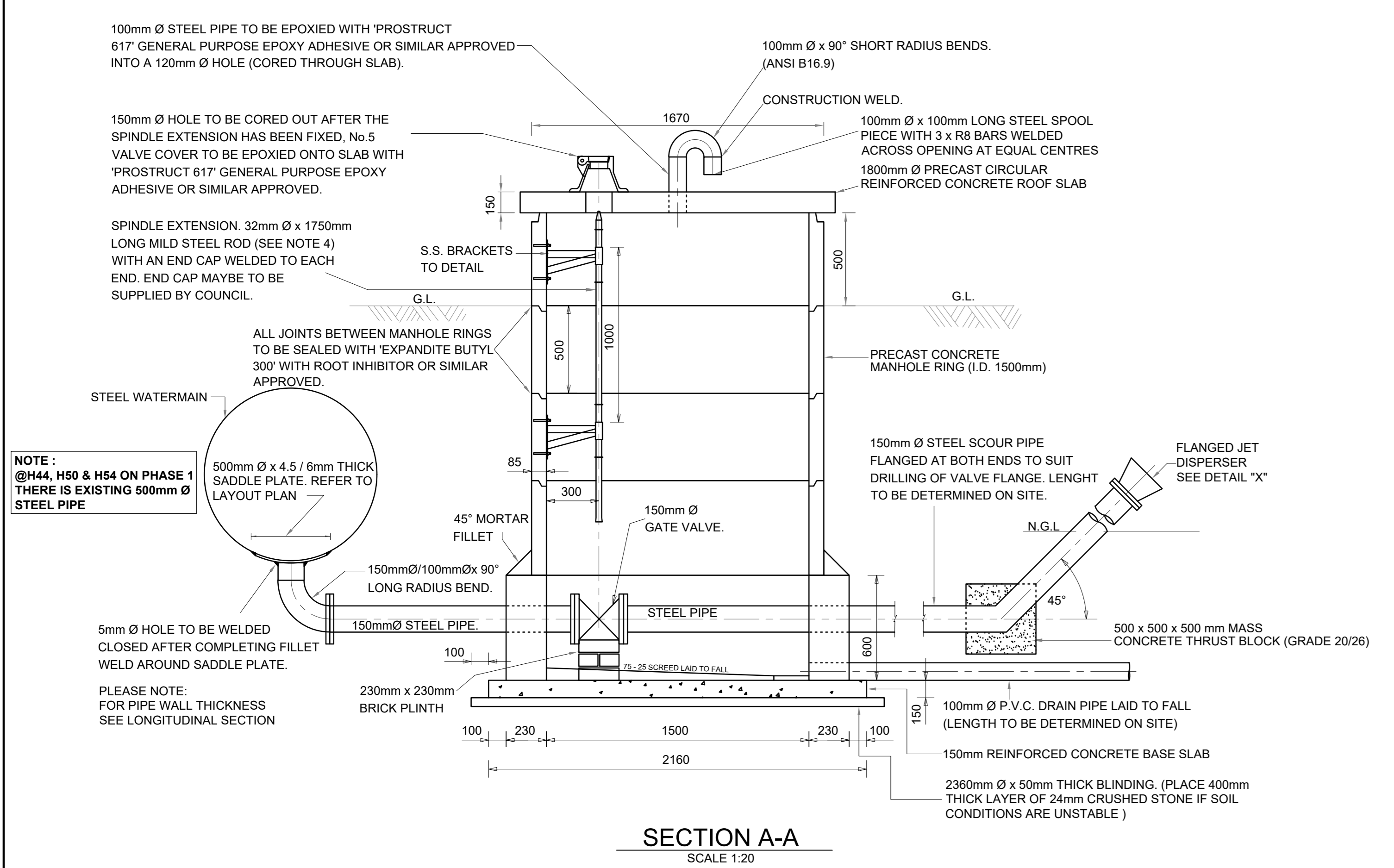
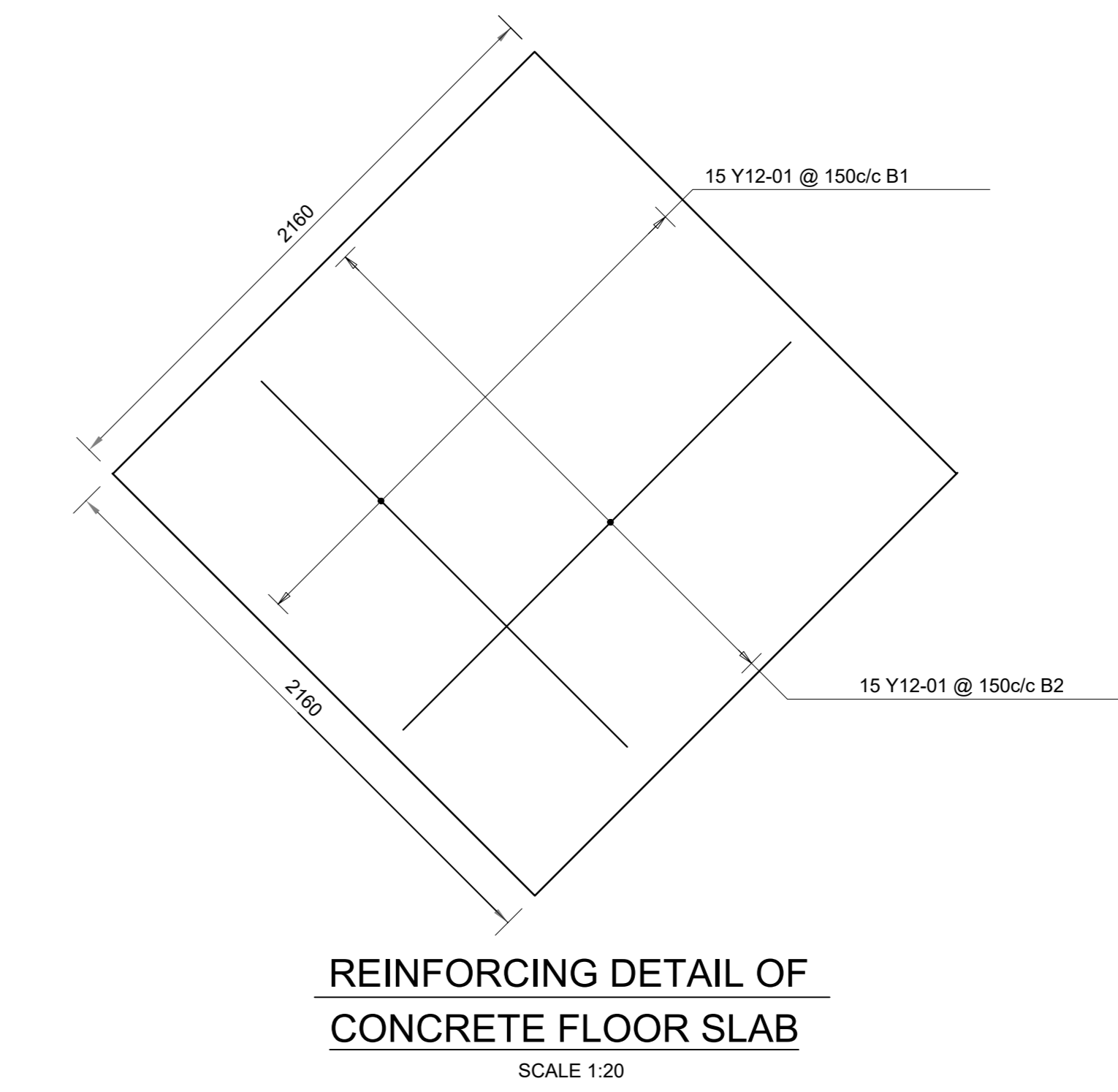
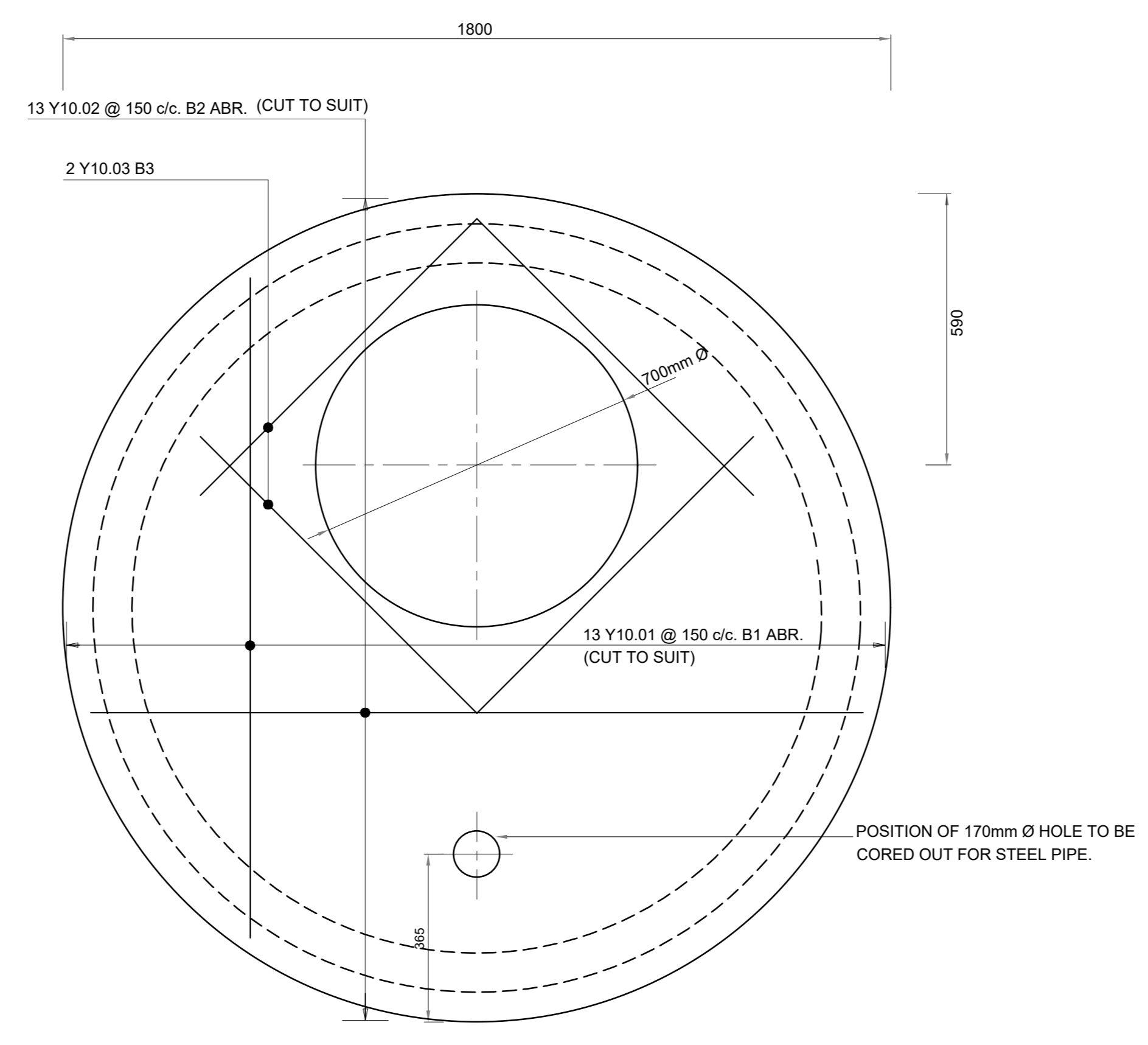
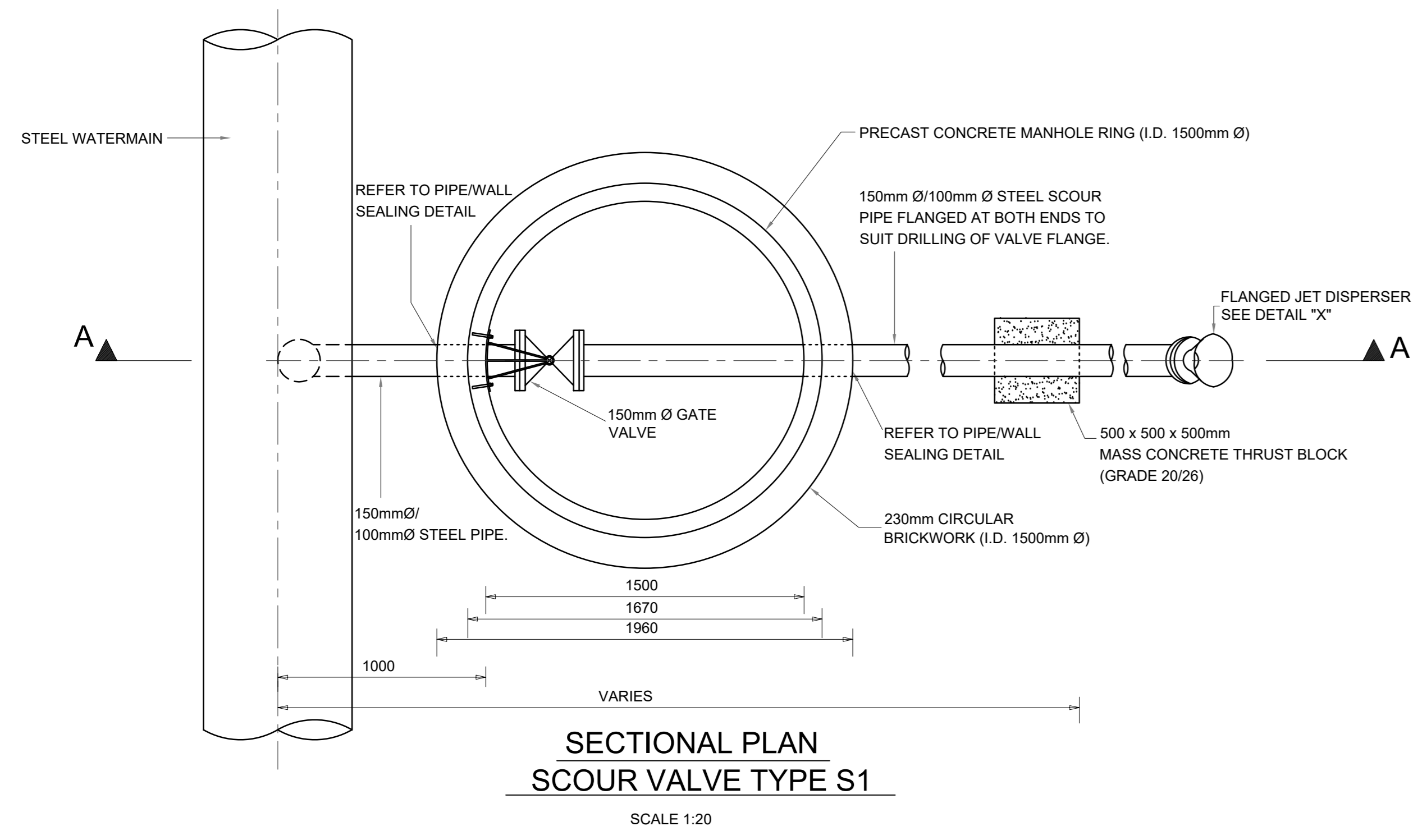


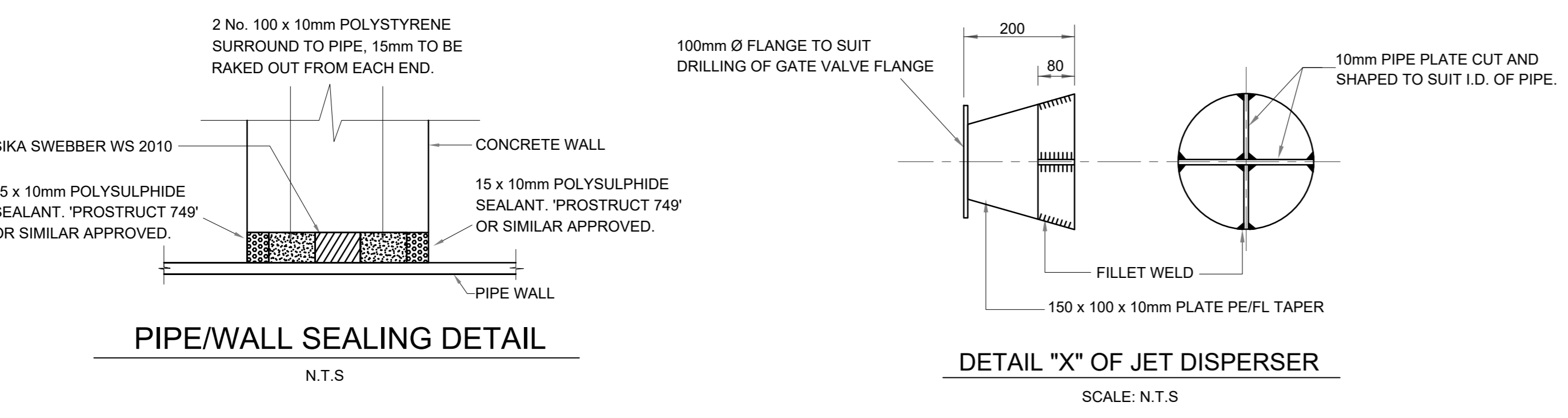
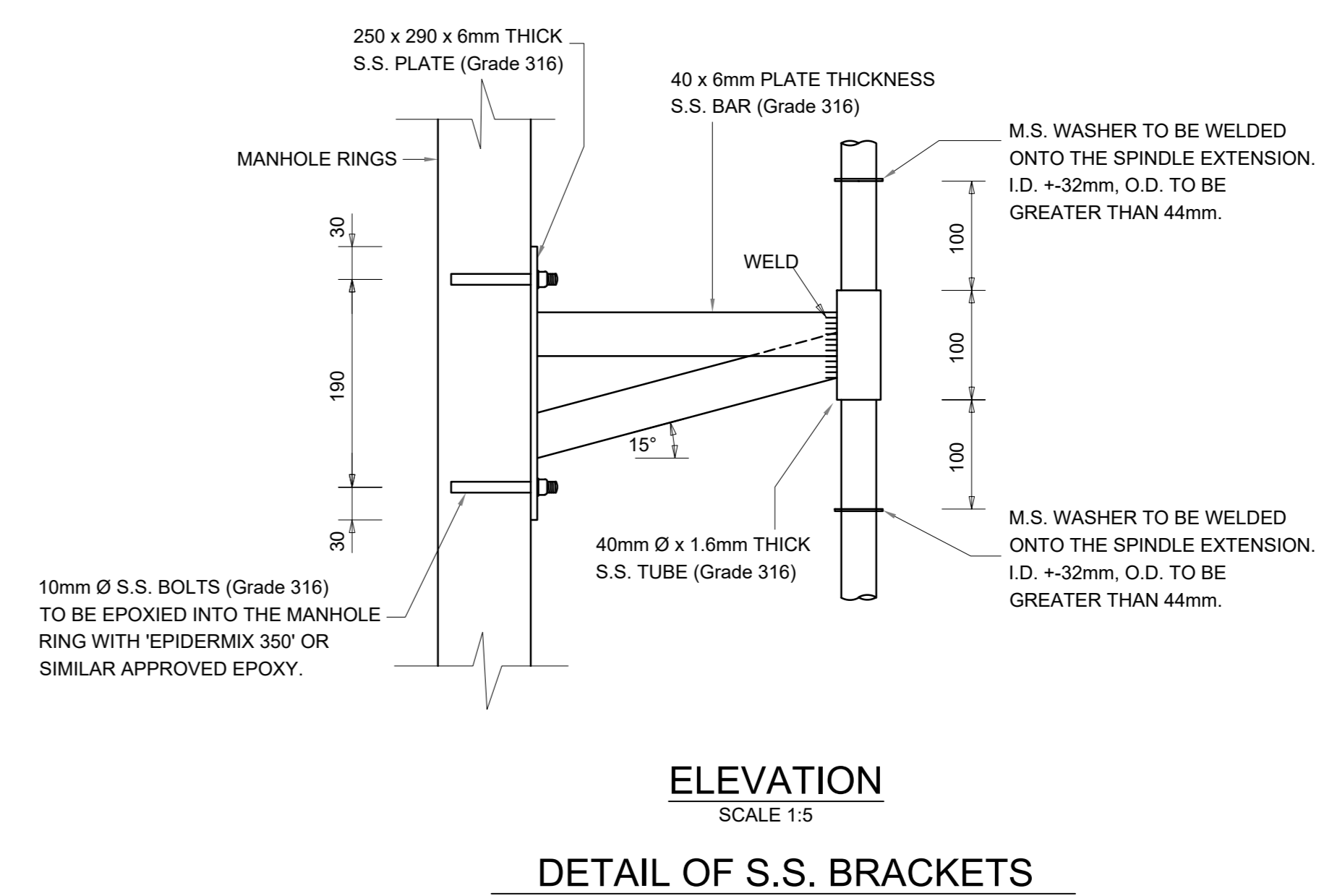
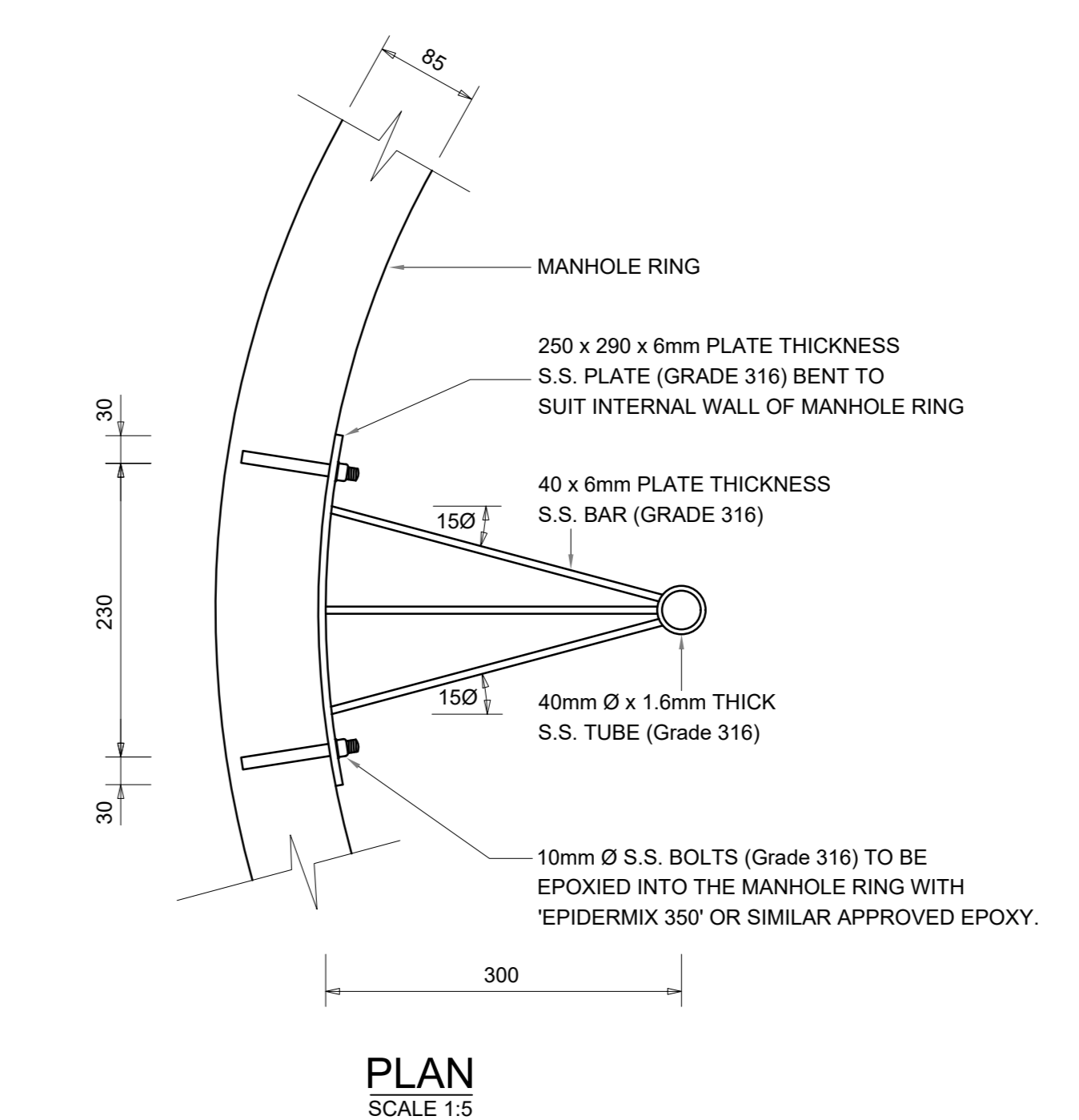
LEGEND EXISTING UNDERGROUND SERVICES ARE AS SHOWN BELOW.

CONSTRUCTION INFORMATION	
MAINLAYER	
START DATE	
FINISH DATE	
W/O NUMBER	
LEVEL OF SERVICE	
SUPERVISOR NAME	
CONTACT NUMBER	
DATE SENT TO GIS	
GIS INFORMATION	
DATE RECEIVED	
NAME	



COMPONENT LOCATION	No. OFF	No. IN EACH	TYPE SIZE MARK	Total No.	LENGTH mm	SHAPE CODE	BENDING DIMENSIONS					
							A mm	B mm	C mm	D mm	E/R mm	
FLOOR SLAB			Y12.01	30	2050	20	2050					
CONCRETE COVER -			Y10.01	13	1800	37	90	1740				
			Y10.02	13	1800	37	80	1740				
			Y10.03	2	1475	37	750					

CONCRETE COVER		FLOOR SLAB		COVER TO ALL STEEL (STEEL TO SABS 920)		STRENGTH	
TYPE	MASS	TYPE	MASS	FLOOR SLAB :	ROOF SLAB :	25 MPa	at 28 days
M.S	30.8	M.S	56.00	50mm	30mm		
H.T		H.T					



- NOTE:**
- ROOF SLABS TO BE PRECAST ON SHUTTERS.
 - CHAMBER TO BE FOUNDED ON INSITU MATERIAL OR ON REWORKED MATERIAL COMPACTED TO 95% Mod.A.A.S.H.T.O.
 - FOUNDATIONS TO HAVE 50mm THICK BLINDING LAYER OF GRADE 15/26 CONCRETE BEFORE BASE REINFORCEMENT IS PLACED.
 - ALL MILD STEEL AND STEEL PIPEWORK TO BE RLSAN LINED AND COATED OR SIMILAR APPROVED TO A MINIMUM DRY FILM THICKNESS OF 300 MICRONS.
 - EXPOSED EXTERNAL SIDES OF CHAMBER & ROOF SLABS TO BE PAINTED WITH 2 COATS OF A PLASTICISED PAINT, 'IVORY PROTECOTE PAINT' OR SIMILAR APPROVED. COLOUR :
 CHAMBER - 'FOREST GREEN'
 ROOF SLAB - 'GOLDEN YELLOW'
 - ALL JOINTS BETWEEN MANHOLE RINGS TO BE SEALED WITH 'EXPANDITE BUTYL 300' WITH ROOT INHIBITOR OR SIMILAR APPROVED.

FOR CONSTRUCTION

Revision	Date	Description
0	JULY 2024	ISSUED FOR CONSTRUCTION
A	JUNE 2024	ISSUED FOR TENDER

NOTE: No construction work to commence until land and servitude acquisitions have been completed.

Acquisitions completed:

Date	Engineer	NORTH POINT

UNDERGROUND SERVICES CHECKED -

SERVICE	DATE	SIGNATURE
SEWERS		
WATERMANS		
TELKOM CABLES		
ELECTRIC CABLES		
S.A.R CABLES		
E.S.C CABLES		
OIL PIPE LINE		

Contract No. **WS 7837**

Project No. **X6714**

Planning Unit: **WEST HAMMARSDALE - STERKSPRUIT**

Ward No. **103 and 4**

Project Title: **HAMMARSDALE HIGH LEVEL RESERVOIR INLET (PHASE 2)**

Drawing Title: **SCOUR CHAMBER, DETAILS & REINFORCING DETAILS (H44, H50 & H54)**

Scale : 1:20, 1:10 & 1:5
 Designed : R.NHLUMAYO Date : JULY 2024
 Checked : Drawn: S.ZULU

Area Engineer
 Manager (Water Design)
 Deputy Head (Engineering)
 E. MSWELI - Head (W & S)

Drawing No. **56724** 10/23 Sheet Rev. **0**