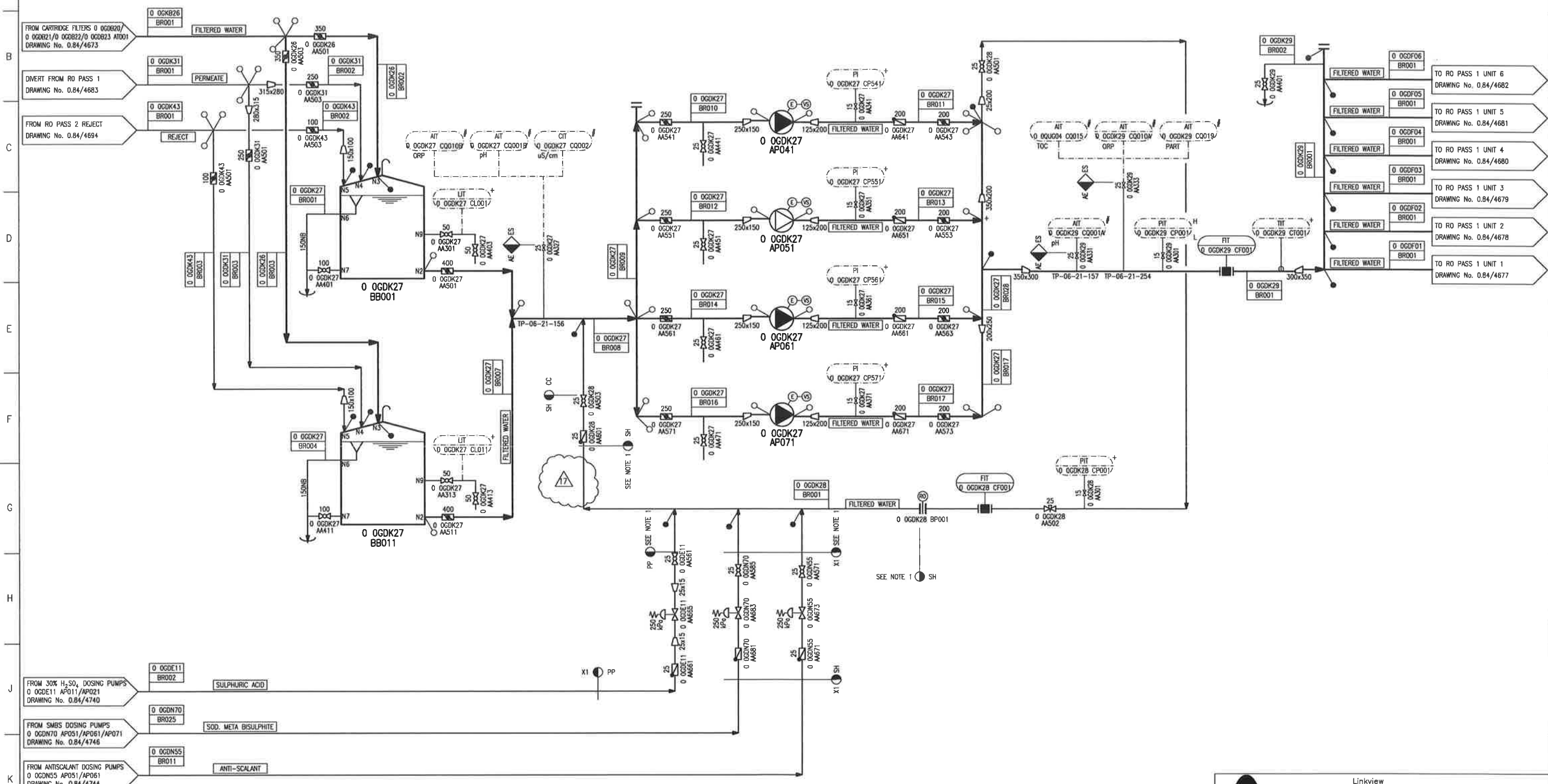


NOTE : 1
MATERIAL TO BE SPECIAL DUPLEX SS



0 OGDK27 BB001/BB011
 RO 1 FEED TANK : 2 OFF
 VOLUME : 80 m³
 DIMENSIONS : 3.1 m x 3.9 m
 M.O.C. : GLCS
 FLUID DESCRIPTION : FILTERED WATER

0 OGDK27 AP041/AP051/AP061/AP071
 RO PASS 1 HP PUMP : 4 OFF
 CAPACITY : 266 m³/h
 PRESSURE : 2100 kPa
 MOTOR : 250 KW
 IMPELLER M.O.C. : 316 ST. ST.
 CASING M.O.C. : 316 ST. ST.

AS BUILT
 Signed: *[Signature]* Date: 03/10/2008

Linkview
260 Kent Avenue
Randburg
P.O.Box 3597
2125

Tel.: +27 11 886-0266
Fax: +27 11 886-0294
E-Mail: info@aquas.co.za

REV	DATE	DESCRIPTION	BY	CHECKED BY	DATE
17	02.10.18	PIG 0 OGDK28 CP501 DELETED	N.S.	N.M.	J.P.
16	13.02.18	AS BUILT	N.S.	N.M.	J.P.
15	28.07.15	INSTRUMENTS MOVED AND DRAIN ADDED	J.F.	J.M.	H.H.
14	08.07.15	AUTO VENT VALVE ADDED	J.R.	M.F.	S.E.
13	11.06.15	INSTRUMENTATION POSITION REVISED	J.R.	J.M.	S.E.
12	12.01.15	VALVE REMOVED & THERMOWELL ADDED	Megs	J.C.	S.E.

DESIGN APPROVED: 25.05.09 F.F.
 DESIGNED BY: 25.05.09 J.V.
 CHECKED BY: 25.05.09 J.H.
 DRAWN BY: 25.05.09 Y.K.
 SCALE: NTS

ESKOM

REFERENCE DRAWINGS:
 MEDUPI POWER STATION
 WTP ~ SYSTEM 1
 RO FEED TANKS & RO PASS 1 PUMPS
 P. & I. DIAGRAM
 C048-11009
 0.84 / 4674