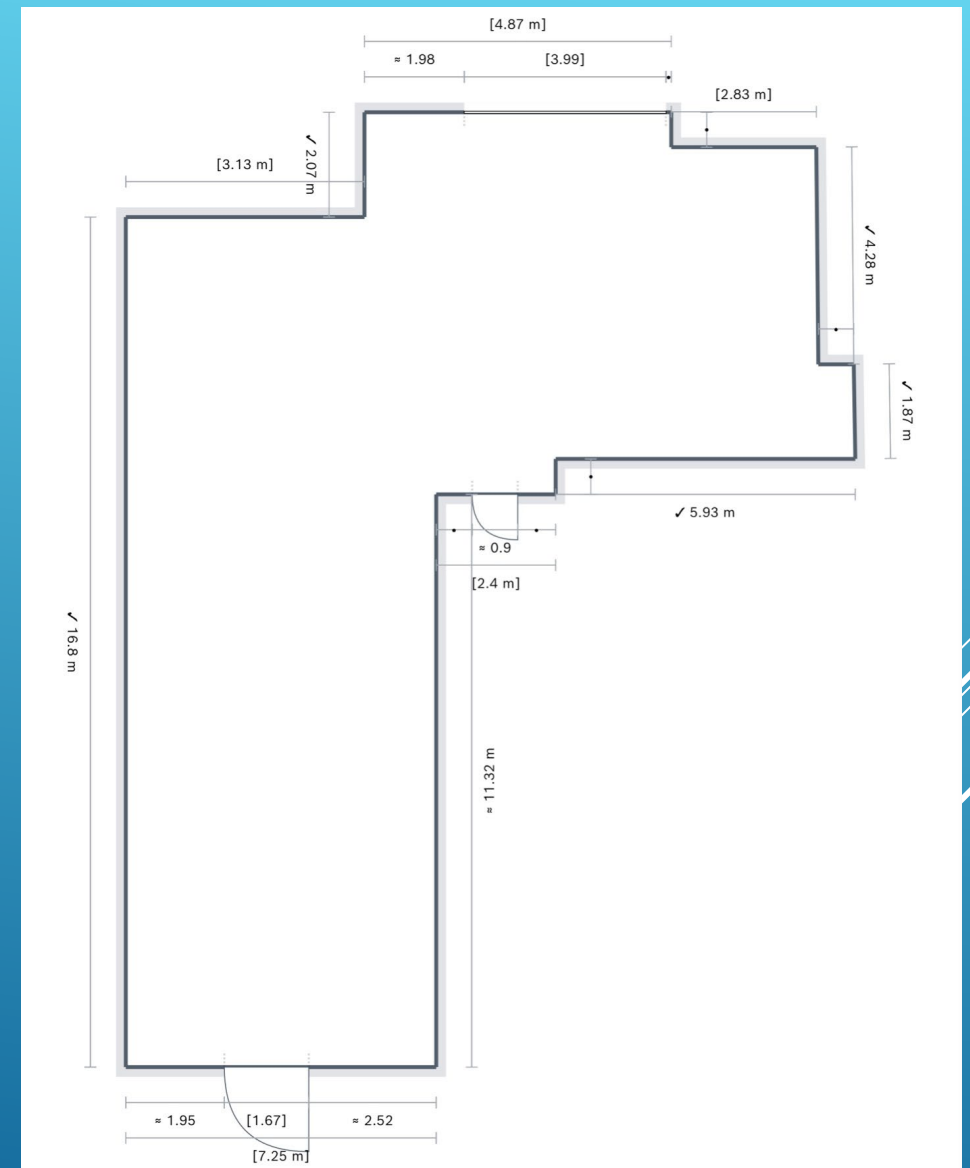
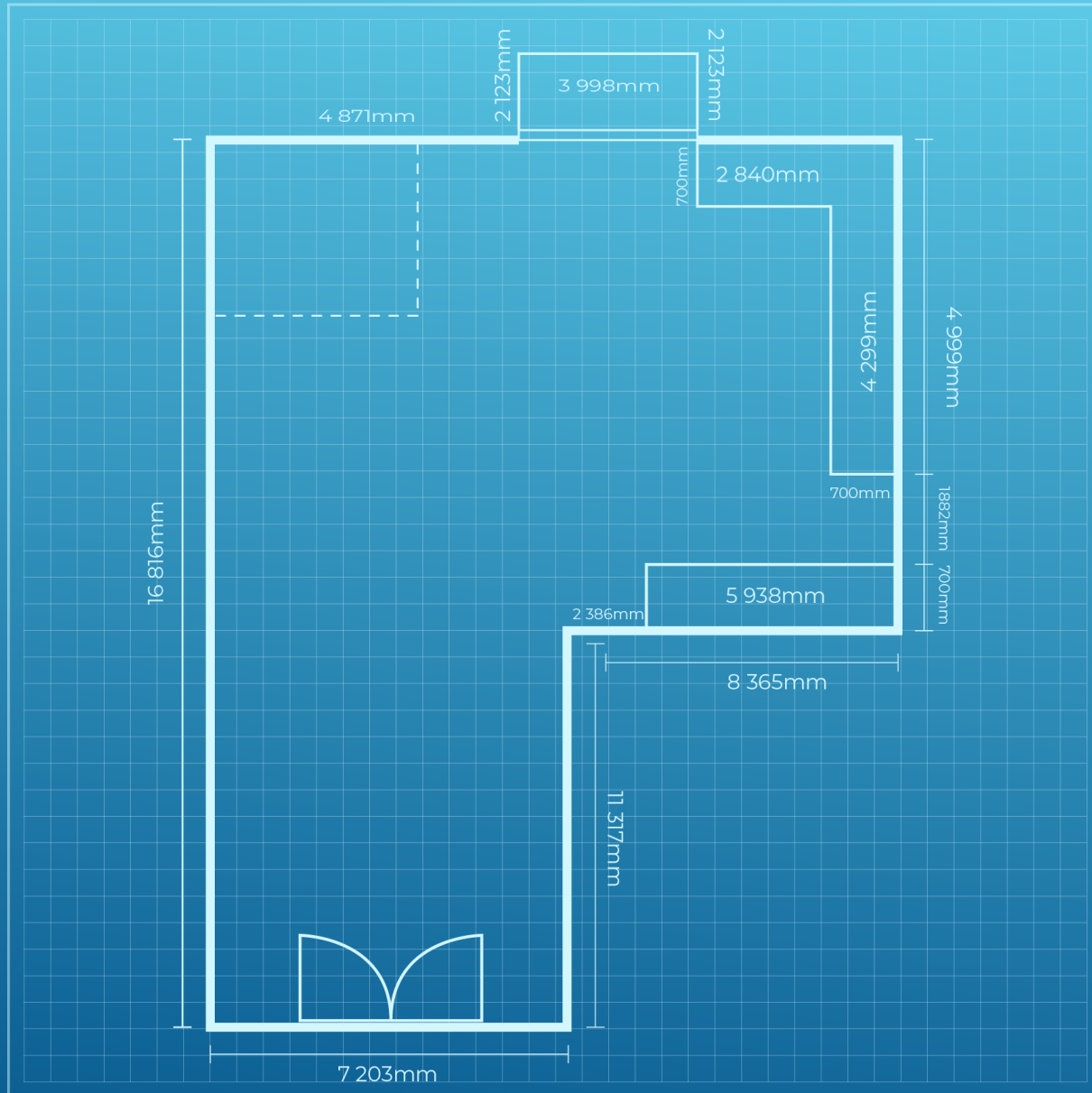




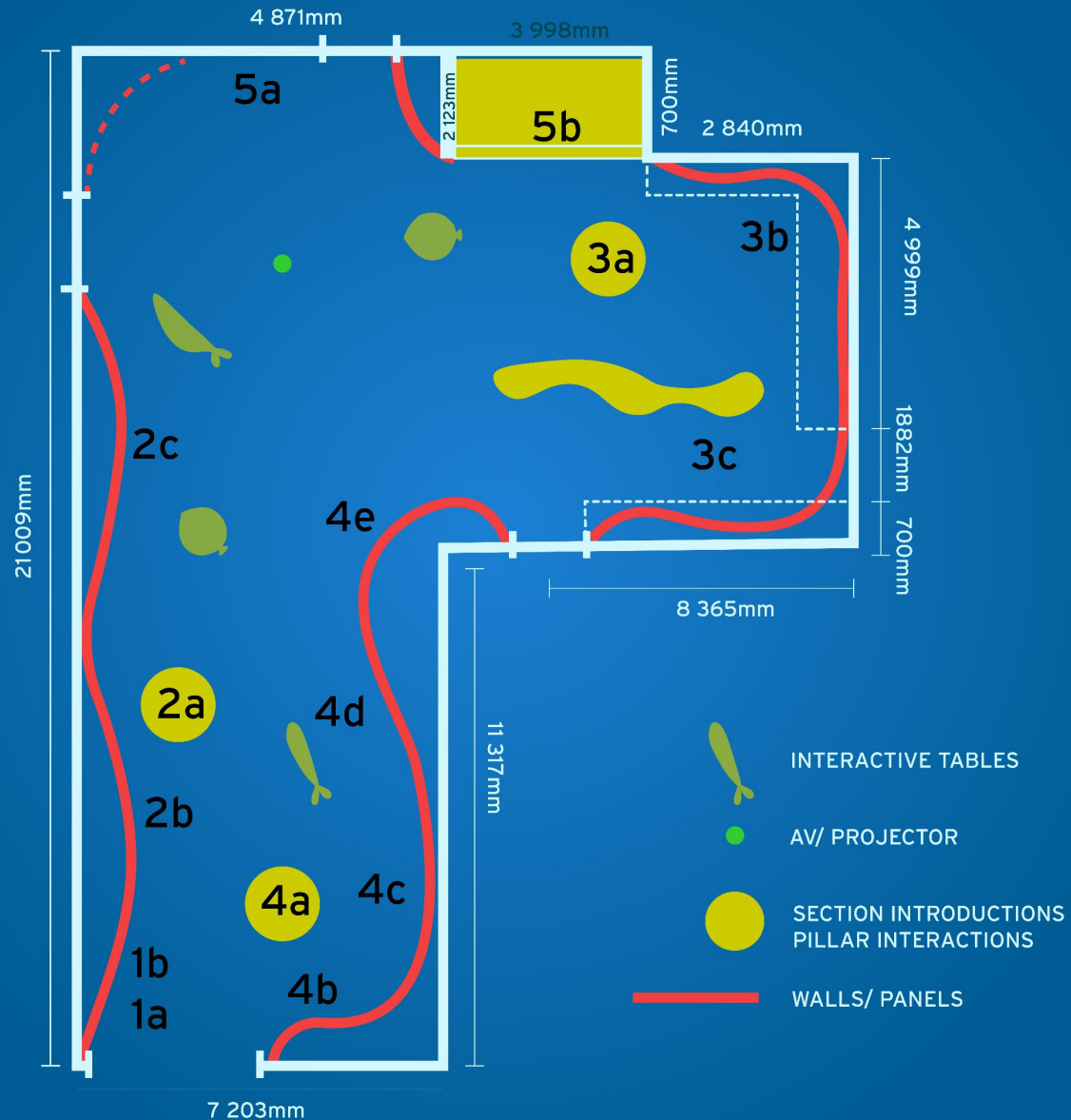
THE SEA AND US

Graphic Designer Annexure D

FLOOR PLAN



CONTENT PLAN



1. Exhibition Introduction

- a. Introduction
- b. Acknowledgements

2. Sustainable Sea

- a. Introduction
- b. Untold History of the Sea and Us
- c. Coastal Livelihoods

3. Sea Change

- a. Introduction
- b. Disturbance
- c. Pollution

4. Economics of the Sea

- a. Introduction
- b. Recreation & Tourism
- c. Shipping and defence
- d. Energy Production and Mineral Resources
- e. Fisheries and Aquaculture

5. Interactives

- a. Photo Opportunity
- b. Submarine - Scientific Research and Technology (might have to go into 5a space).

Low-Tech Interactives:

- Design layout for 12x low-tech interactives with basic infographics.
- Follow provided scamps or create basic scamps for complex layouts.

TYPEFACE

"PAIN IS A PESKY PART OF BEING HUMAN. I'VE LEARNED IT FEELS LIKE A STAB WOUND TO THE HEART. SOMETHING I WISH WE COULD ALL DO WITHOUT, IN OUR LIVES HERE. PAIN IS A SUDDEN HURT THAT CAN'T BE ESCAPED. BUT THEN I HAVE ALSO LEARNED THAT BECAUSE OF PAIN, I CAN FEEL THE BEAUTY, TENDERNESS, AND FREEDOM OF HEALING. PAIN FEELS LIKE A FAST STAB WOUND TO THE HEART. BUT THEN HEALING FEELS LIKE THE WIND AGAINST YOUR FACE WHEN YOU ARE

THE SEA AND US

MC Hork Beans Font

<https://creativemarket.com/maulanacreative/10984452-Hork-Beans-Handwritten-Font?epik=dj0yJnU9OFRnMzF1UDZJVlJlUWk9GWGUzNjVDamd4ZDg1Z21DdHcmcD0wJm49UXJhOUJqYkFJVk5XZU9xWE1sM0RwQSZ0PUFBQUFBR1U2WmE4>



THE SEA AND US

Perhaps some shading?

COLOUR PALETTE



WALL LAYOUT STYLE



Title Space

Larger objects to be hung and to lay over top of design



Cases framed with cut-out effect



More space for the layout is needed.

Cases in the layout



Boarder in cut out effect – side view.
A thin effect, with occasional simple illustrations, to balance the content



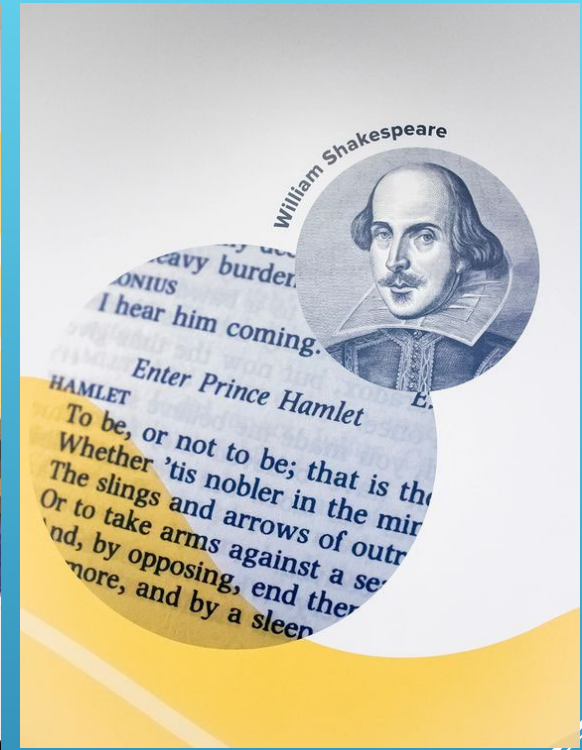
Occasional simple large Illustrations

This example also shows image placement ideas

Design to spill over onto the floor – change to top-down perspective



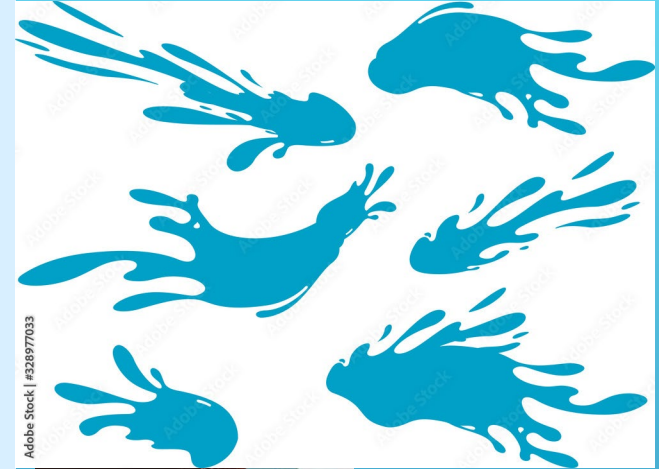
WALL LAYOUT INSPIRATION



WALL LAYOUT INSPIRATION



WALL LAYOUT INSPIRATION



SHAPE INSPIRATION

