

LIGHTING CALCULATION

Watt lights	QTY	Total	
11W	2	22W	
32W	2	64W	
		86W	
Total Sq			
63.91	x	5W/m ²	319.55
Lights On			
1700	-	2200	Hours
52 x 7 x 5	=	1820ha	
0.086W	x	1820ha	
=		156.52kWh	
Allowed 5w/m²			

Unit complies with in SANS 204 Regulations

ELECTRICAL LEGEND

	100L Hot water Geyser
	Distribution Board
	Lightswitch
	Fluorescent Light 1200mm
	Outdoor Light

CONSTRUCTION NOTES

FOUNDATIONS:
 600 x 250mm Class 30/19 Concrete strip foundations in compacted excavations to eng specs. Engineer's foundation design to take preference. Sides and bottom of excavations to be treated with SABS approved termite poisoning
 Width of foundation walls
 0.00-0.70m high: 230mm wide
 0.71-1.10m high: 345mm wide
 1.11-1.70m high: 345mm with 115mm concrete fill
 1.70-2.40m high: 460mm with 115mm concrete fill

STRUCTURAL SLABS & LINTOLS
 According to engineer specifications.
 * Roofs spans wider than 10m
 * Any concrete slabs, retaining walls and boundary walls higher than 18m
 * Any structural system according to SANS 104.00 Part B note BB4.
 * Concrete roofs

WALLS and FLOOR STRUCTURE: GALVANISED BRICKFORCE
 to be provided as follows: From foundation to floor level
 - Continuous at every course From floor level to door height
 Continuous at every fourth course. From door height to wall plate
 Continuous at every course Gable ends - Continuous at every course

Brickforce to overlap 150mm at end joints and 75mm at corners and 110mm at connecting walls.

CEMENT:
 Cement shall be PORTLAND cement complying with SABS 471 or PORTLAND (or similar) CEMENT 15 complying with SABS 831.

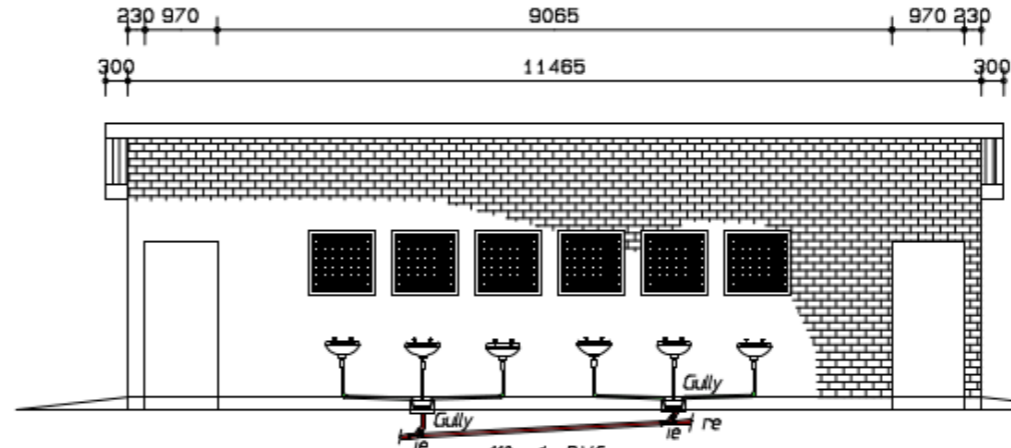
DPC:
 DPC shall be 375micronblack polyethylene sheeting (SABS 952) Type B having Embossed surfaces and shall be laid to the full thickness of the wall above foundations. At end joints, angles and intermediate junctions, it shall be lapped for 150mm.

MORTAR:
 Mortar to be sand cement mortar (one part by volume of cement to five parts by volume sand).

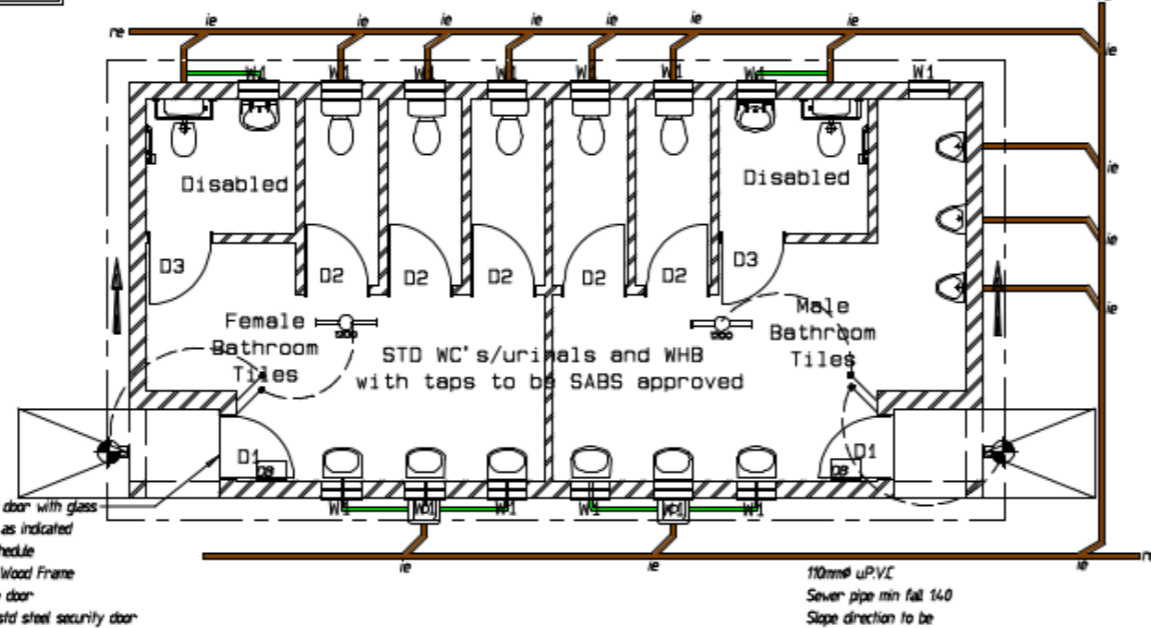
BRICK BOND:
 Brickwork shall be built in stretcher bond, with 10mm thick bedding joints and 10mm thick perpendicular joints. Perpendicular joints to be flushed up solid and each course is to be laid on a solid bed of mortar.

PROT. AGAINST SUBTERRANEAN TERMITE ACTIVITY
 A building shall be protected against subterranean termite activity by the effective application of soil insecticides to the site in accordance with the requirements of SANS 10124; or the installation of a suitable termite barrier and the implementation of suitable termite management measures in acc. with provisions of an Agreement Certificate.

WATERPROOFING
 Waterproofing to be One layer Derbigum SP4 waterproofing membrane, with 75mm side laps and 100mm end laps, sealed to primed surface to falls and crossfalls by torchfusion finished with two coats Roofcote bituminous aluminum paint. Waterproofing to be installed by an Approved Derbigum Contractor under a ten year guarantee. All waterproofing acc. to SANS 104.00 Part K2.



TYPICAL FRONT SCALE 1:100



SEWER/ELECTRICAL/WINDOW/DOOR SCHEDULE SCALE 1:100

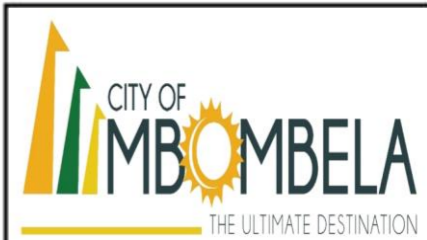
WINDOW & DOOR SCHEDULE (STEEL)

<p>2 UNITS</p> <p>D1</p> <p>Standard solid Meranti door wit glass panel as indicated Frame - Standard Meranti 813mm x 2032mm. Sealer - 2 coats WOODOC 30.</p>	<p>5 UNITS</p> <p>D2</p> <p>Standard hollow Meranti door Frame - Standard Meranti 813mm x 2032mm. Sealer - 2 coats WOODOC 30.</p>
<p>14 UNITS</p> <p>W1</p> <p>Top hung winblocks with grid bar safety panels in front. See detail.</p> <p>Standard steel windowframes. All window fittings solid brass, painted with undercoat and two layers enamel. Burglarbars in front of all open windows sections Glass- SABS 0137-2000 specifications</p>	<p>2 UNITS Disabled Door</p> <p>D3</p> <p>Standard hollow Meranti door 868mm x 2100mm. Sealer - 2 coats WOODOC 30. With hydraulic mechanism for door to self enclose</p>

GLAZING

GLAZING
 Acc to SABS 0400-NV32D. Windows according to schedule
 Glass 210m² & over - 6mm safety glass
 Glass 150m² - 210m² - 5mm clear
 Glass 0.75m² - 150m² - 4mm clear
 Glass 0.00m² - 0.75m² - 3mm clear
 & bathrooms frosted

All glazing by specialist according to SANS 104.00 Part N Note 4 - Safety Glazing note 4.4 Glass Thickness note 4.4.6 - Special care to all doors & windows lower than 500mm to FFL. 1 Air change per habitable room & 3 air changes for bathrooms.



TEL (013) 759 9111 P.O.Box 45
 FAX (013) 759 2070 Nelspruit 1200

Approved for Construction by:

H.v.Rooyen	_____
Date	_____
M Pearson	_____
Date	_____

PROJECT:

PLAN

ELECTRICAL/SEWER LAYOUT DOOR/WINDOW SCHEDULE

SCALE:	DRAWING No:	DATE:	PAGE:
AS SHOWN	MC-002	14/4/15	0002

DRAUGHTSPERSON SIGNATURE: C. SCHREUDER CAD:R	CLIENT SIGNATURE:
---	-------------------