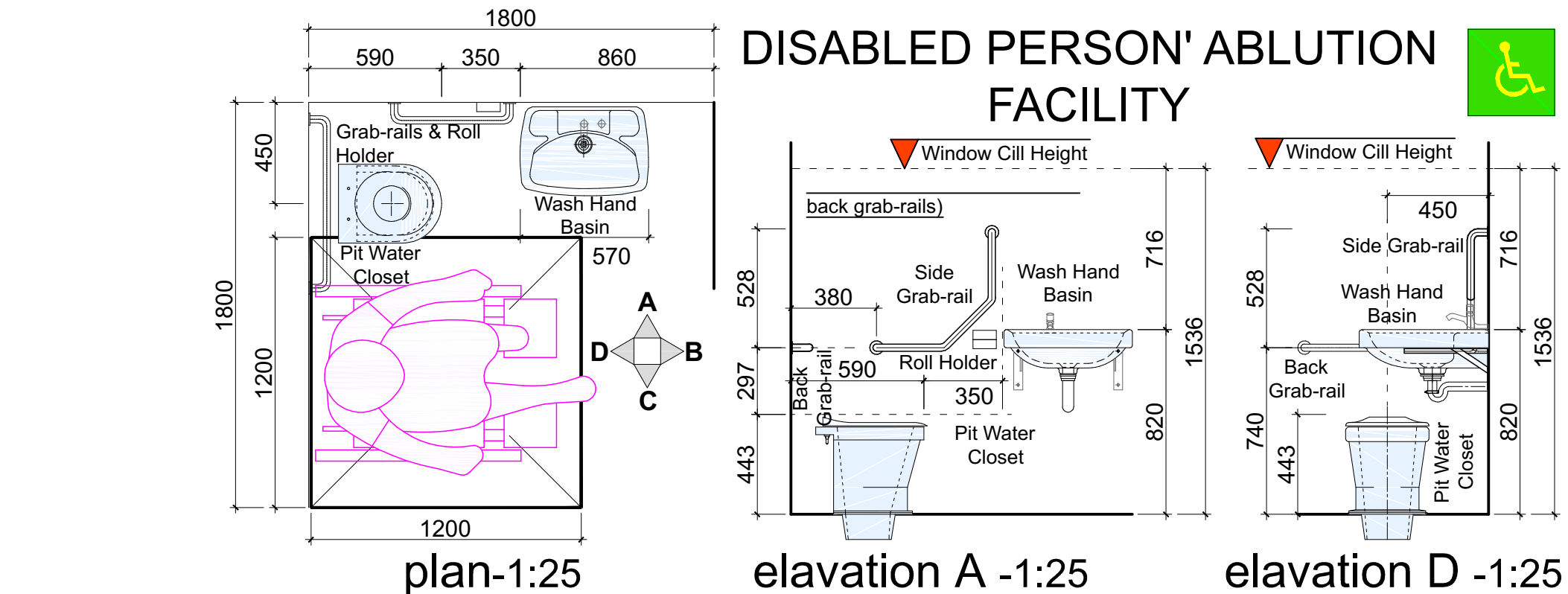
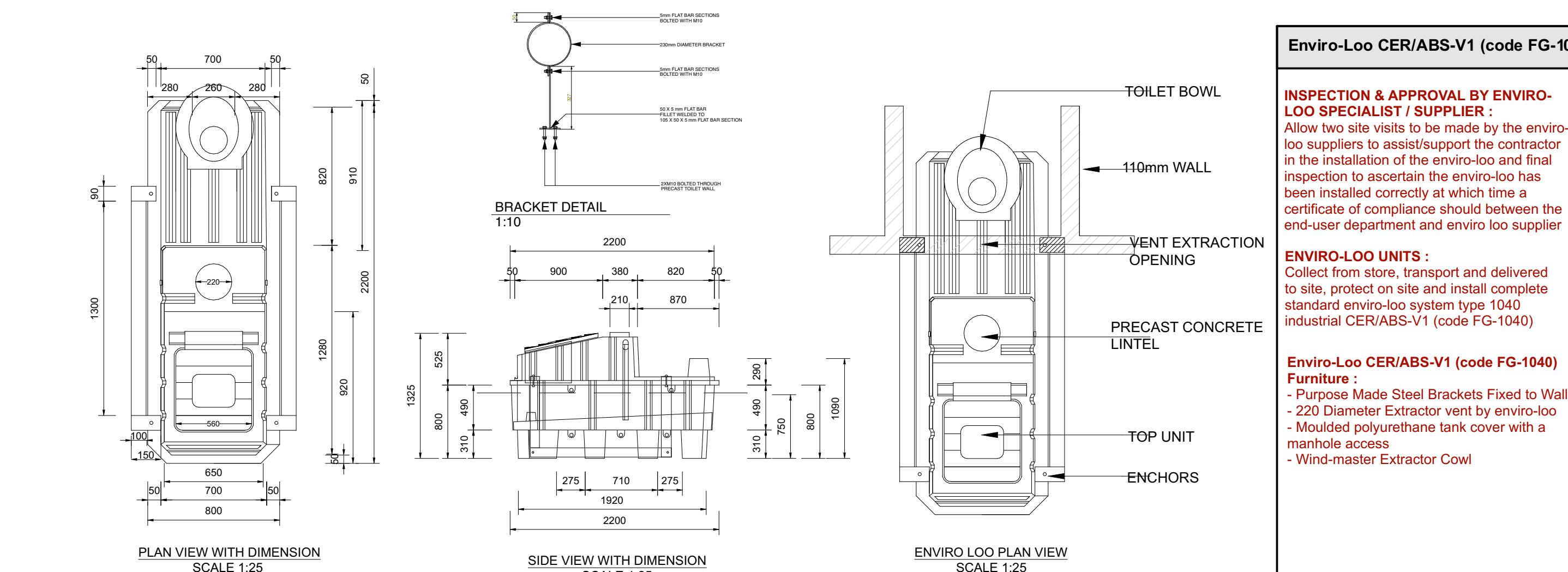
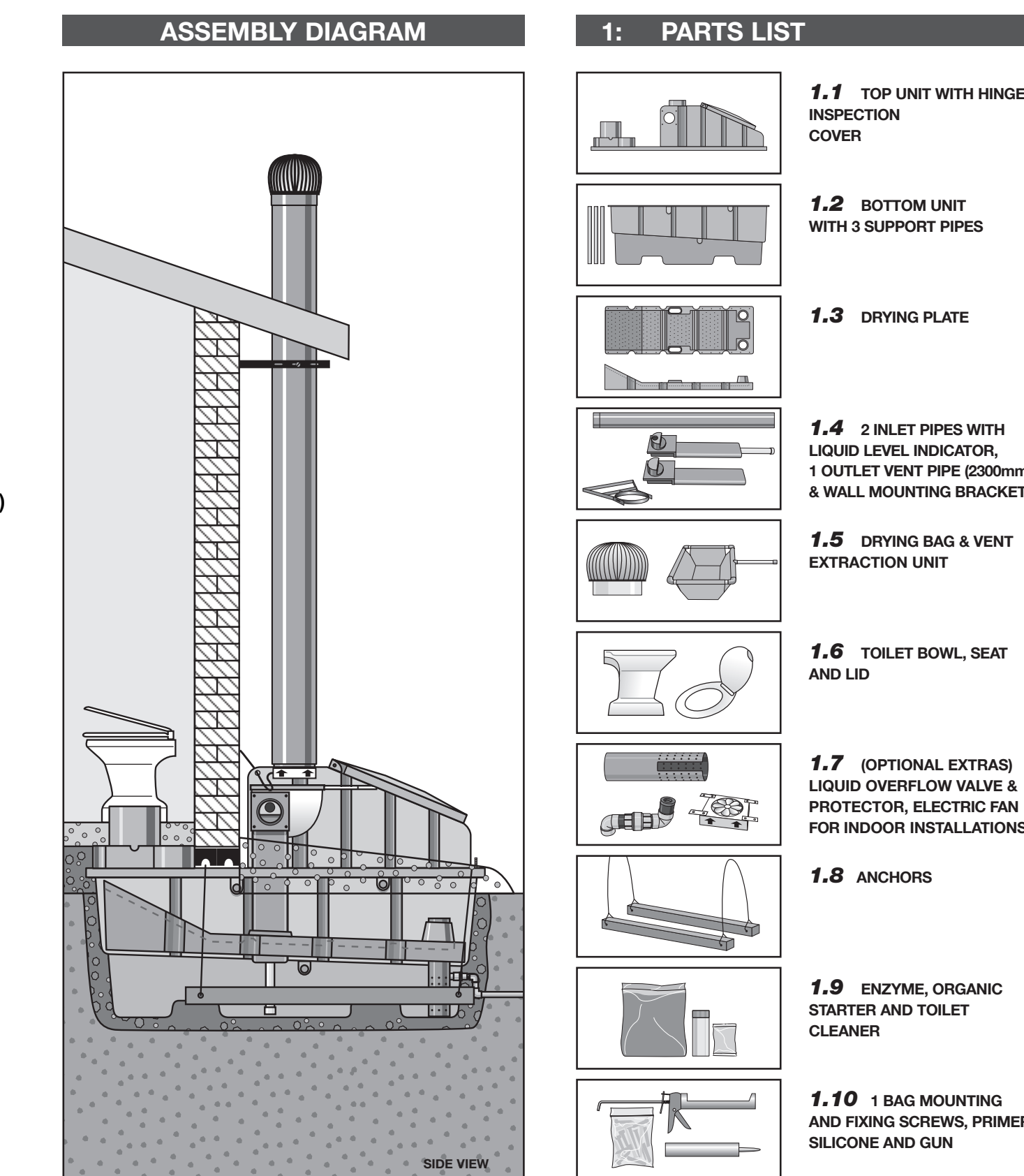


SANITARY SCHEDULE / BLOCK		
ITEM	DESCRIPTION	QUANTITY
Toilet Roll Holder	"Robust Steiner" Height: 385 mm depth: 140 mm With 135 mm metal locatable Toilet Roll Holder from Classic White Range. Durable and vandal proof with Anti-theft bracket available	07
Soap Dispenser	"Robust Steiner" Height: 210 mm depth: 105 mm 100 mm Liquid Soap Dispenser Classic White Range	07
Paper Towel Dispens	"Robust Steiner" Height: 334mm Depth: 184mm With 256mm Locatable Paper Towel Dispenser Compact Manual Classic White Range	07
Waste Bin	"Robust Steiner" Height: 522mm Depth: 160mm With 105mm Wall mounted Bin. Stainless Steel Range	07
Sho Bin	"Robust Steiner" Capacity: 20 litres Height: 600 mm Depth: 420 mm Width: 420 mm Bin Stainless Steel Range	07
Grab Rails	Code K826, 300 x 300 x 300 x 50mm Stainless steel See also grab rail fixed in position Code K815, 800 long x 50mm Projecting stainless steel ergonomic grab rail fixed in position	01
Mirrors	Stainless steel or equal approved mirror size 350 x 400mm plugged to wall with chrome plated screws	01

FINISHES SCHEDULE / BLOCK		
ITEM	DESCRIPTION	QTY
Primary Floor Finish	40mm Unisolv Granod screed, Granolithic mix for surface beds, composed of 1 part Surebond cement (Finch CE 422N) 5 parts sand and 1 part 50mm granod aggregate finished with a steel trowel (as indicated) to level and finish. The finish is manufactured in accordance with SANS 50197:1 steel trowel grade finish with a 100 mm high monolithic upstanding coping coping skirting	
Skirting	150 mm high coping upstanding coping skirting, moulded with special tool	
Final Floor Dressing	Flow-Tite HV Self levelling epoxy resin mastic screeding compound, with Mast seal floor finish. Colour Brown. All surfaces to be primed with Flow-Tite HV Primer, balance and dust free with a maximum modulus of cure of 5% Prime surface with one coat of FlowPrime Solvent Free Epoxy Primer in Bismen coat with a maximum cure over coating of 24 hours. Apply one coat of Flow-Tite HV Primer and a maximum coat thickness with a maximum over coating time of 48 hours.	
Internal Wall Plaster	Standard Plaster - 20mm smooth Renduplast Plaster on plastered walls to Architects detail, ready to receive plaster. 1. Rendering or float 10 mm. 2. Floating or second coat 5 mm. 3. Finishing coat 5 mm. 4. Total thickness of minimum 20 mm	
Internal Wall Paint	Prepare surfaces and remove all loose material, apply one coat Mist Paint Primer and plaster provide two coats Carbolineux Duo Vapour barrier dry and apply Archibond approved emulsion paint for interior use	
Ceiling	NO CEILING - CARBOLINEUX WOOD PRESERVER All exposed external structural timber to receive two coats carbolineux wood preserver to dry and apply Archibond approved emulsion paint member sections before the application of roof cladding	
Wall Tiles	150X150 Essence White AGH-A1 Glossy white tiles, fixed to plaster (elementary assured) with and approved tile adhesive and pointed with white cement to splash-backs in 12 Lines above wall	

DOOR SCHEDULE	DOOR 1		DOOR 2		DOOR 3		GATE 01	
	D1		D2		D3		G1	
	<p><b>Elevation 1:100</b></p>		<p><b>Elevation 1:100</b></p>		<p><b>Elevation 1:100</b></p>		<p><b>Elevation 1:100</b></p>	
Item 1	Door Location	EXTERNAL ABILUTION DOORS	QUANTITY X 2	ALL INTERIOR TOILET CUBICLES DOOR	QUANTITY X 66	PARAFACILE TOILET DOOR	QUANTITY X 01	ENTRANCE GATE
Item 2	Door Description	<p>Ø13mm x 2025mm 4.6mm thick heavy duty Saligna Black Powder Single Solid Steel door fitted with SABS 545 in pressed steel frame. All part in accordance with architect's schedule.</p> <p>Standard 1.6mm pressed mild steel double rebrite pressed mild frame complying to SABS 1259 complete with lugs and fasteners. Frame profile to suit wall thickness (150mm, 200mm and 340mm as per floor plans)</p>				<p>Ø13mm x 2025mm 4.6mm thick heavy duty EXTERIOR QUALITY hardened metal door fitted with SABS 545 in pressed steel frame. All part in accordance with architect's schedule.</p> <p>Standard 1.6mm mild steel double rebrite pressed mild frame complying to SABS 1259 complete with lugs and fasteners. Frame profile to suit wall thickness (150mm, 200mm and 340mm as per floor plans)</p>		
Item 3	Frame	<p>Handmade enamel paint finish complying with SABS 723 for primer, SABS681 for undercoat and SABS 620 type 2 for finish coat. Colour to architect's approval</p>				<p>Handmade enamel paint finish complying with SABS 723 for primer, SABS681 for undercoat and SABS 620 type 2 for finish coat. Colour to architect's approval</p>		
Item 4	Frame Finish	<p>Handmade enamel paint finish complying with SABS 723 for primer, SABS681 for undercoat and SABS 620 type 2 for finish coat. Colour to architect's approval</p>				<p>Handmade enamel paint finish complying with SABS 723 for primer, SABS681 for undercoat and SABS 620 type 2 for finish coat. Colour to architect's approval</p>		
Item 5	Door Finish	<p>Prime with wood primer to comply with SABS, type 2. Paint one (1) Unwaxed under coat to comply with SABS 681, grade 1, and finish with two (2) coats allyle egg-shell paint to comply with SABS 630, type 1. Colour to architect's approval</p>				<p>Prime with wood primer to comply with SABS, type 2. Paint one (1) Unwaxed under coat to comply with SABS 681, grade 1, and finish with two (2) coats allyle egg-shell paint to comply with SABS 630, type 1. Colour to architect's approval</p>		
Item 6	Fan Light	<p>NONE</p>				<p>NONE</p>		
Item 7	Ironmongery	<p>70mm Four way security lockset with satin chromefurnish. Door stop - polished brass foot mounted. AL0202-E194 150 x 50mm natural anodized aluminium infill plate with engraved formulae symbol</p>				<p>ASSA ABLOY UNO Satin Chrome Indicator B4 SC Pined R60 70mm Four way security lockset with satin chrome finish. Door stop - polished brass foot mounted.</p>		
Item 8	Hinges	<p>3 no. stainless steel medium duty butt hinges.</p>				<p>3 no. stainless steel medium duty butt hinges.</p>		

<b>PLUMBING SCHEDULE / BLOCK</b>		
	<b>DESCRIPTION</b>	<b>QUANTITY</b>
Wall Hung Urinal	LAMETER WALL HUNG BOWL URINAL PRODUCT CODE 705426/705427 Install Sanitary urinals without floor wall hung "Lavatory" urinal with top inlet (code 705426) or back inlet (code 705427). Overall size 600 x 380 x 90 mm. Top inlet fittings (code 705421) and bottom inlet fittings (code 705424) include a 38 mm c.i. domed gasket, a spigater (with 20 mm diameter thread), and two brackets. No Traps Req.	03
Standard Toilet Seat	"Atlas Plastic" WOOD PEDESTAL (Granite Color) 367mm x 466mm x 516 mm complete with cover lid to be plugged into Envelope CERABATH 1111-1140 System	07
Junior Toilet Seat	"Atlas Plastic" BABY LONG DROPPY PUMP Jet (Granite Color) 262mm x 360mm x 300 mm complete with cover lid, to be plugged into Envelope CERABATH 1111 (code FS-1400)	00
Joy Tank Tap	Joyo Plastic Water Bank Basin Honey Duty PVC Pump Jet and Reducer Kit	00
Porcelain Tap	Including extension pipe where required.	00
Cobra Tap	Cobra Tap - Mirrored Cobra Series 1/2" Medical Oceanic Series - Tiles - Pliers Tanks - Chrom-Nickels; Island Control. Square type. 1/4" ball ceramic disc. Blue Indico. 7/8SP M SANIS 229 Type 2 Includes. 1 pair. Flanged backroll, island demand for medical kitchen and installations.	01
Standard Taps	CODRA Wall Mounted 68mm projection commercial CROMA IDEAL BIS Tap - CHROME. Under: CODRA UKRU FBKUBR. Includes 1/2" standard with 1/2 inch male & female Double Spout Deck Height: 24mm. Including all Plumbing, valves and fittings.	00
Troughs & Drainage	1065 mm x 650 mm x 90 mm outdoor commercial Lion Concrete Wash Drainer 300 (1065mm) SABS Approved. Includes 1/2" standard with 1/2 inch male & female Double Spout Deck Height: 24mm. Including all Plumbing, valves and fittings.	00
Wash Hand Basin:	Granite color: Christy Lavatory Sample size 670 x 400 x 245mm with one tap hole, with moulded-in soap holder, with splashback. Basin to be approved by Architect	00



SANS 10400 & XA COMPL				OTHER APPROVALS				WATER SUPPLIER				SANITATION SEWER				SITE INFORMATION				STAGES				PROJECT TEAM				DRAWN:		CHECKED:	
<div>CONDUCTANCE</div> <div><div><div>Rational Dec</div><div>Standard Cal</div></div><div><div>Y</div><div>N</div><div>Y</div><div>N</div></div></div>				<div>Environmental Impact Assessment (EIA)</div> <div><div>Mark with X</div><div>Yes</div><div>No</div><div>FLA</div></div>				<div>MUNICIPALITY</div> <div><div>Yes</div><div>No</div><div><div><div></div><div></div></div></div></div>				<div>MUNICIPALITY</div> <div><div>Yes</div><div>No</div><div><div><div></div><div></div></div></div></div>				<div>ERF NO.</div> <div><div>1</div><div>2</div><div>3</div><div>4</div><div>5</div><div>6</div><div>7</div><div>8</div><div>9</div></div>				<div>SIPDM</div> <div><div>0</div><div>1</div><div>2</div><div>3</div><div>4</div><div>5</div><div>6</div><div>7</div><div>8</div><div>9</div></div>				<div>Competent Contact Person</div> <div>MPENDULO SHANGASE</div> <div><div>CONTACT No.</div><div>078 319 3469</div><div><div>REGISTRATION No.</div><div>PrArchST 24751103</div><div><div>COMPANY NAME</div><div>SIST CONSORTIUM</div></div></div></div>				<div>NAME OF COMPETENT PERSON:</div> <div>MPENDULO SHANGASE</div>		<div>NAME OF COMPETENT PERSON:</div> <div>SIYABONGA MANYONI</div>	
<div>SOLAR HEAT GAIN</div> <div><div><div>Rational Dec</div><div>Standard Cal</div></div><div><div>Y</div><div>N</div><div>Y</div><div>N</div></div></div>				<div>South African Heritage Resource Agency (SAHRA)</div> <div><div>Mark with X</div><div>Yes</div><div>No</div><div>FLA</div></div>				<div>BOREHOLE</div> <div><div>Yes</div><div>No</div><div><div><div></div><div></div></div></div></div>				<div>SEPTIC TANKS</div> <div><div>Yes</div><div>No</div><div><div><div></div><div></div></div></div></div>				<div>COVERAGE</div> <div><div>1</div><div>2</div><div>3</div><div>4</div><div>5</div><div>6</div><div>7</div><div>8</div><div>9</div></div>				<div>SACAP</div> <div><div>1</div><div>2</div><div>3</div><div>4</div><div>5</div><div>6</div></div>				<div>Architect</div> <div>MPENDULO SHANGASE</div>				<div>REG NO:</div> <div>PrArchST 24751103</div>		<div>REG NO:</div> <div>PrArch 49324416</div>	
<div>GEOGRAPHICAL ZONE</div> <div><div><div>Rational Dec</div><div>Standard Cal</div></div><div><div>Y</div><div>N</div><div>Y</div><div>N</div></div></div>				<div>Department of Water and Sanitation (DWS)</div> <div><div>Mark with X</div><div>Yes</div><div>No</div><div>FLA</div></div>				<div>PRESSURE</div> <div><div>Yes</div><div>No</div><div><div><div></div><div></div></div></div></div>				<div>VIP/ENVIRO LOO</div> <div><div>Yes</div><div>No</div><div><div><div></div><div></div></div></div></div>				<div>VILLAGE NAME</div> <div><div>1</div><div>2</div><div>3</div><div>4</div><div>5</div><div>6</div><div>7</div><div>8</div><div>9</div></div>				<div>Contractor</div> <div></div>				<div>SIGNATURE:</div> <div></div>		<div>SIGNATURE:</div> <div></div>					
<div>NBRs COMPLIANCE</div>				<div>South African National Roads Agency (SANRAL)</div> <div><div>Mark with X</div><div>Yes</div><div>No</div><div>FLA</div></div>				<div>TANKS</div> <div><div>Number</div><div>TOTAL CAPACITY</div><div>BARS</div></div>				<div>PIT LATRINES</div> <div><div>Yes</div><div>No</div><div><div><div></div><div></div></div></div></div>				<div>DISTRICT</div> <div><div>1</div><div>2</div><div>3</div><div>4</div><div>5</div><div>6</div><div>7</div><div>8</div><div>9</div></div>				<div>Elect. Engineer</div> <div></div>				<div>PROJECT NUMBER:</div> <div>ADD17-BATCH06/TMT/1/DOE/LP/21/6 CLUSTER 01</div>		<div>DATE:</div> <div>08-11-2022</div>					
<div>SITE PLAN</div> <div><div>Yes</div><div>No</div><div><div><div></div><div></div></div></div></div>				<div>Other</div> <div><div>Mark with X</div><div>Yes</div><div>No</div><div>FLA</div></div>				<div>OTHER STORE</div> <div><div>Yes</div><div>No</div><div><div><div></div><div></div></div></div></div>				<div>COORDINATES</div> <div><div>1</div><div>2</div><div>3</div><div>4</div><div>5</div><div>6</div><div>7</div><div>8</div><div>9</div></div>				<div>OHS</div> <div></div>				<div>OCCUPANCY CLASSIFICATION:</div> <div>C3</div>		<div>DWG NO:</div> <div>MUKHS-ARCH-400</div>									
<div>OTHER DRAWINGS</div> <div><div>Yes</div><div>No</div><div><div><div></div><div></div></div></div></div>																										<div>REV NO:</div> <div>1</div>					