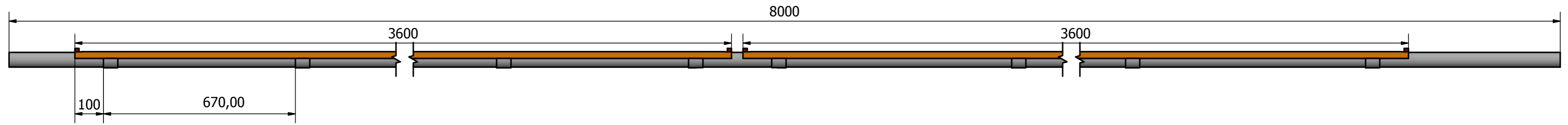
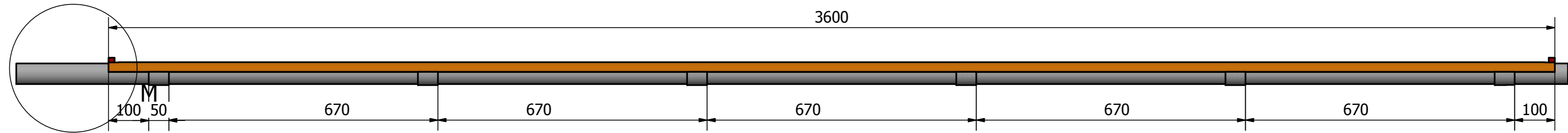


Tube replacement Insert 8m

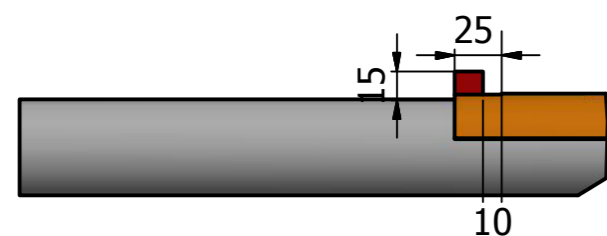


Shield 3.6m

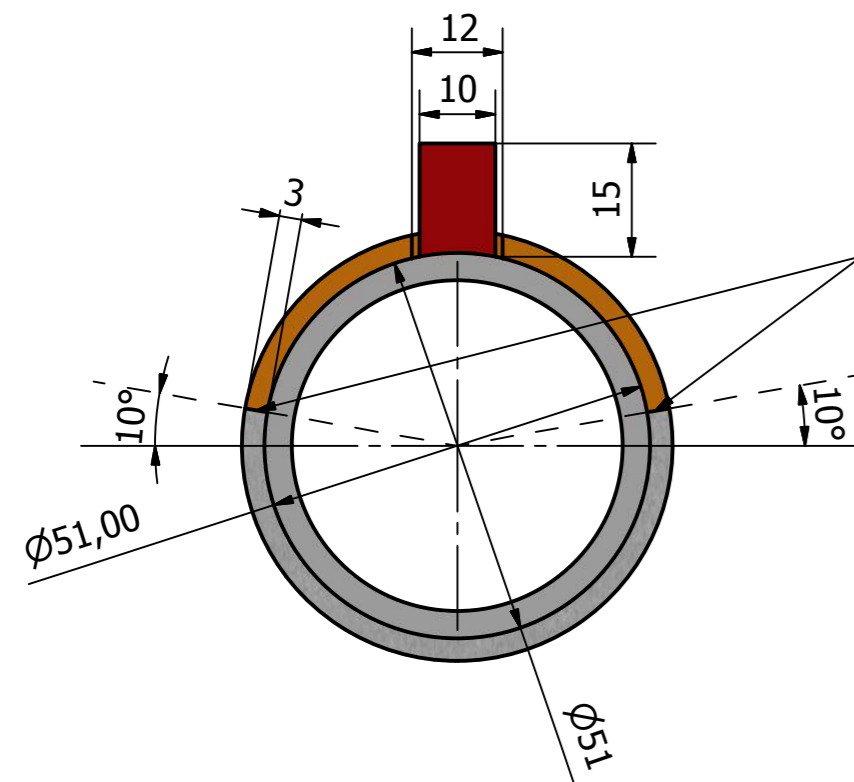


Four(6) bangles need to be fitted to the shield equally spaced.

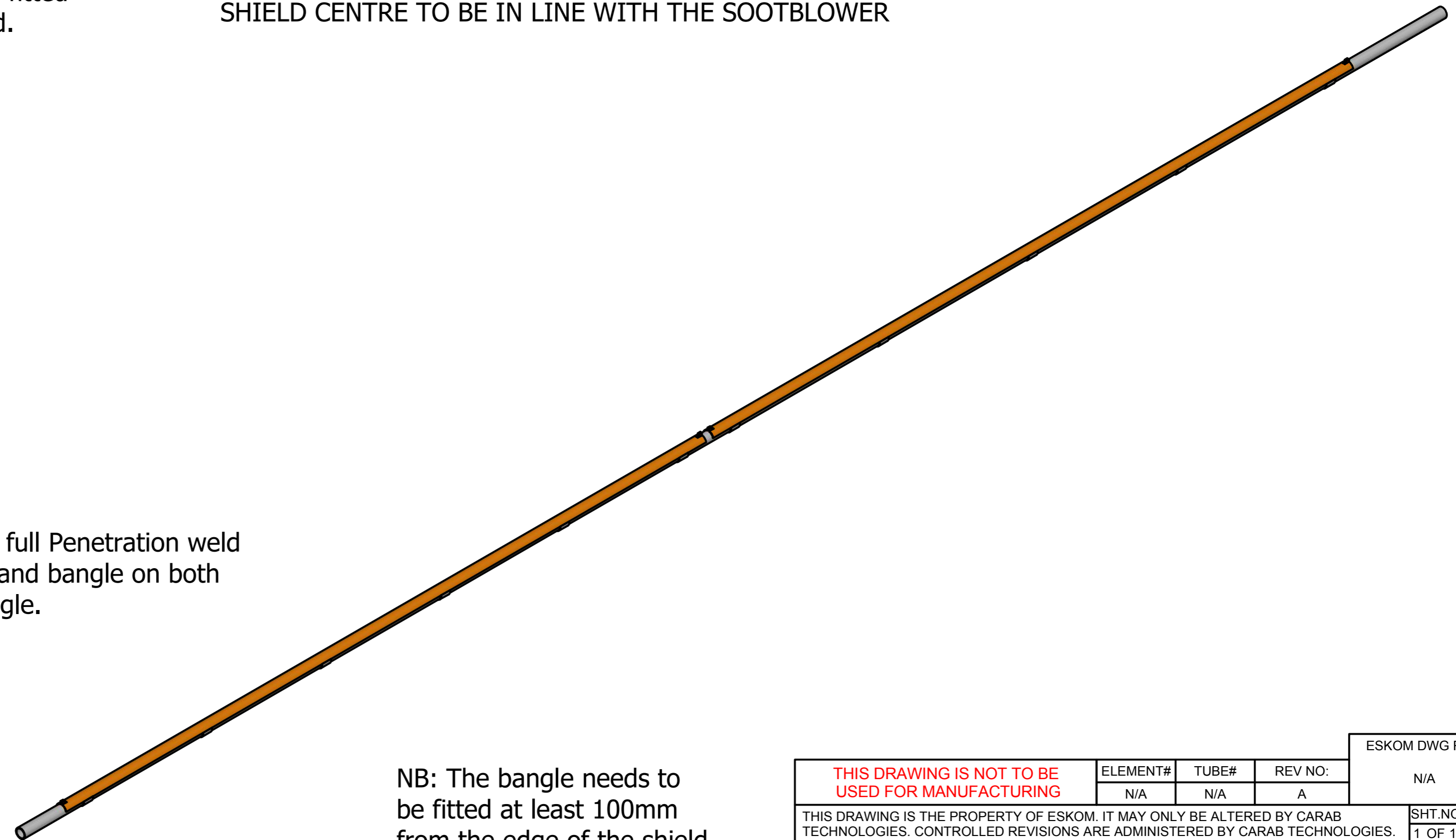
NOTE:
SHIELD CENTRE TO BE IN LINE WITH THE SOOTBLOWER



NB: Stopper Block
Must be fitted with a
10mm gap between
shield and stopper block
as shown on the sketch.




Welding to be a full Penetration weld
between shield and bangle on both
sides of the bangle.



NB: The bangle needs to be fitted at least 100mm from the edge of the shield.

The shield has to face the soot blower perpendicular.

THIS DRAWING IS NOT TO BE USED FOR MANUFACTURING				ELEMENT#	TUBE#	REV NO:	ESKOM DWG REF:
				N/A	N/A	A	N/A
THIS DRAWING IS THE PROPERTY OF ESKOM. IT MAY ONLY BE ALTERED BY CARAB TECHNOLOGIES. CONTROLLED REVISIONS ARE ADMINISTERED BY CARAB TECHNOLOGIES.							SHT.NO
							1 OF 1
DRAWN BY:	WILHELM DU TOIT		2016/12/05	TITLE:			SIZE
CHECKED BY:	ORATILE MEKGWE		2016/12/05	51 ID shield - length 3.6m			A2
APPROVED BY:				TUTUKA POWER STATION			
				SCALE:	CARAB DWG NO:		
				N.T.S	TUT-PP-GEN-126		BUREAU VERITAS

MAT COLOUR	MAT FLOW #	STOCK NO	MATERIAL	O/D	WT	MIN 't	DESCRIPTION
	NA	NA	310 SS	57	3	N/A	Shield
	N/A	N/A	13CrMo44	N/A	N/A	N/A	Stopper Block