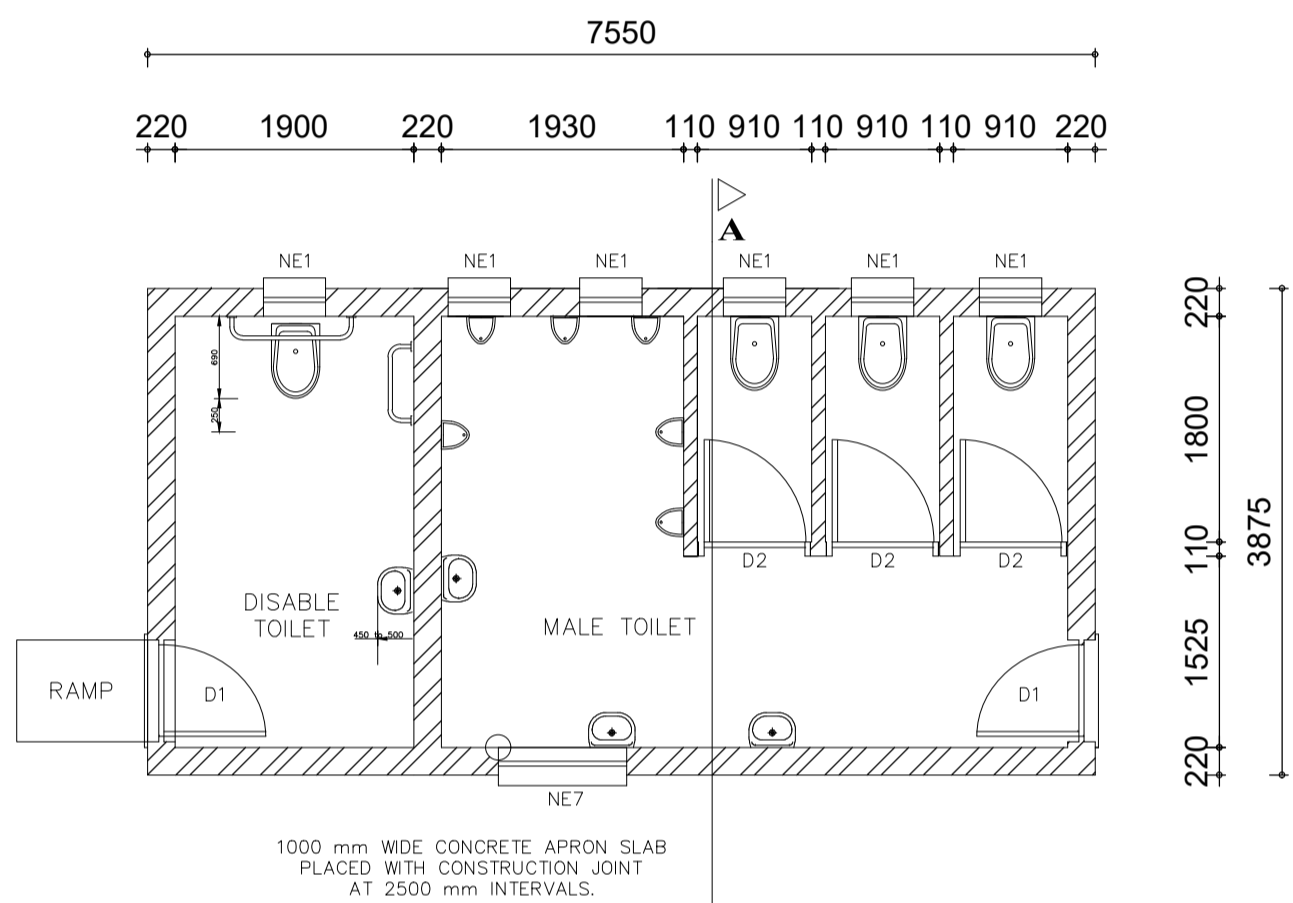
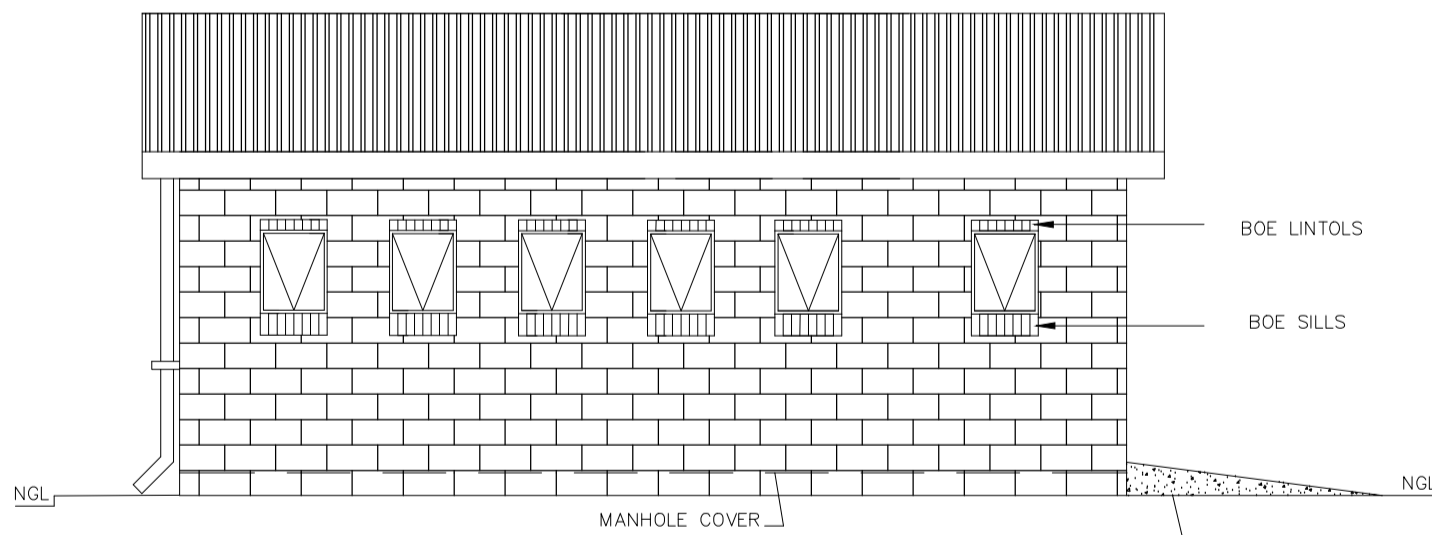


FRONT
SCALE 1:50

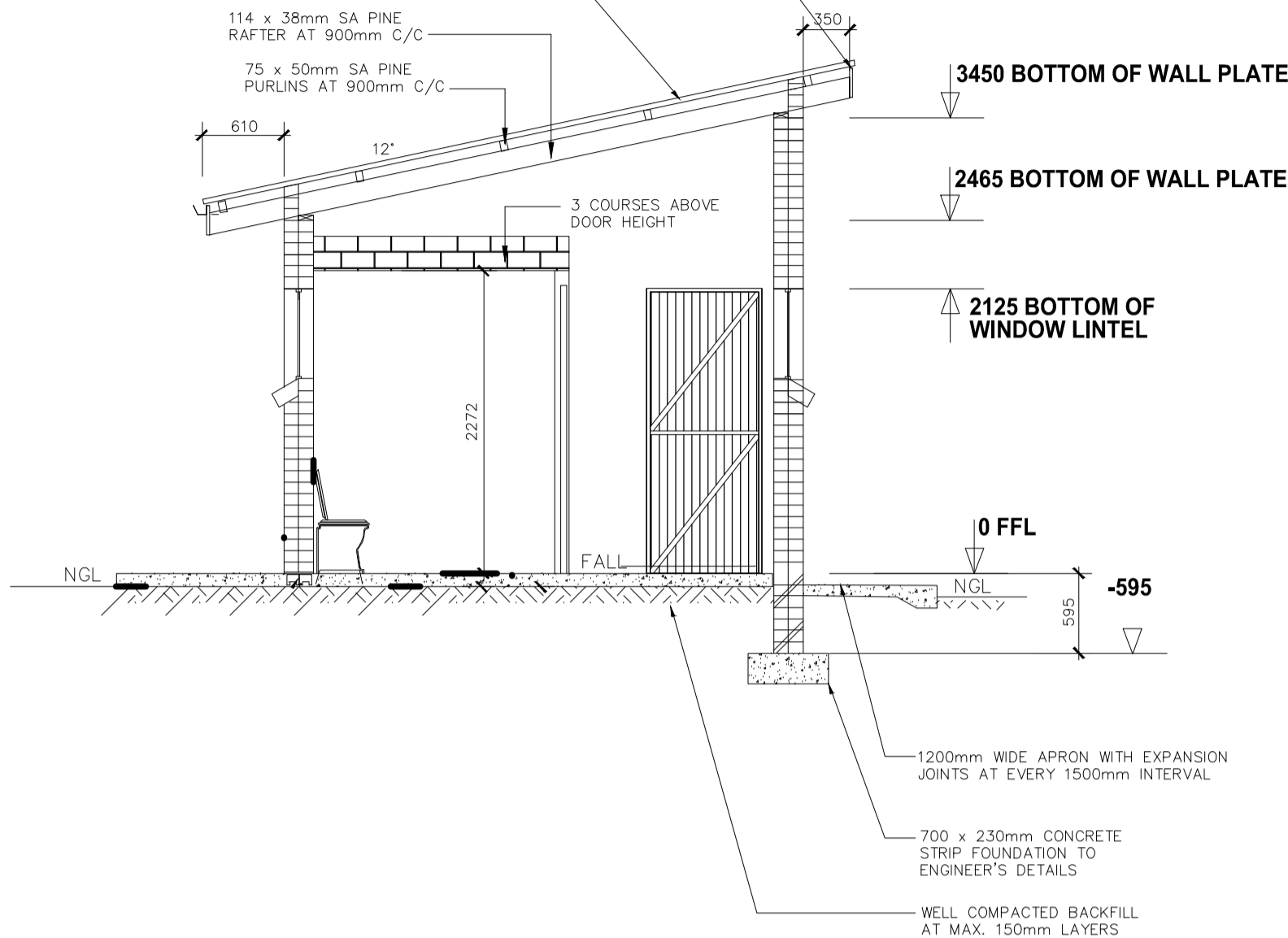


FLOOR LAYOUT
SCALE 1:50

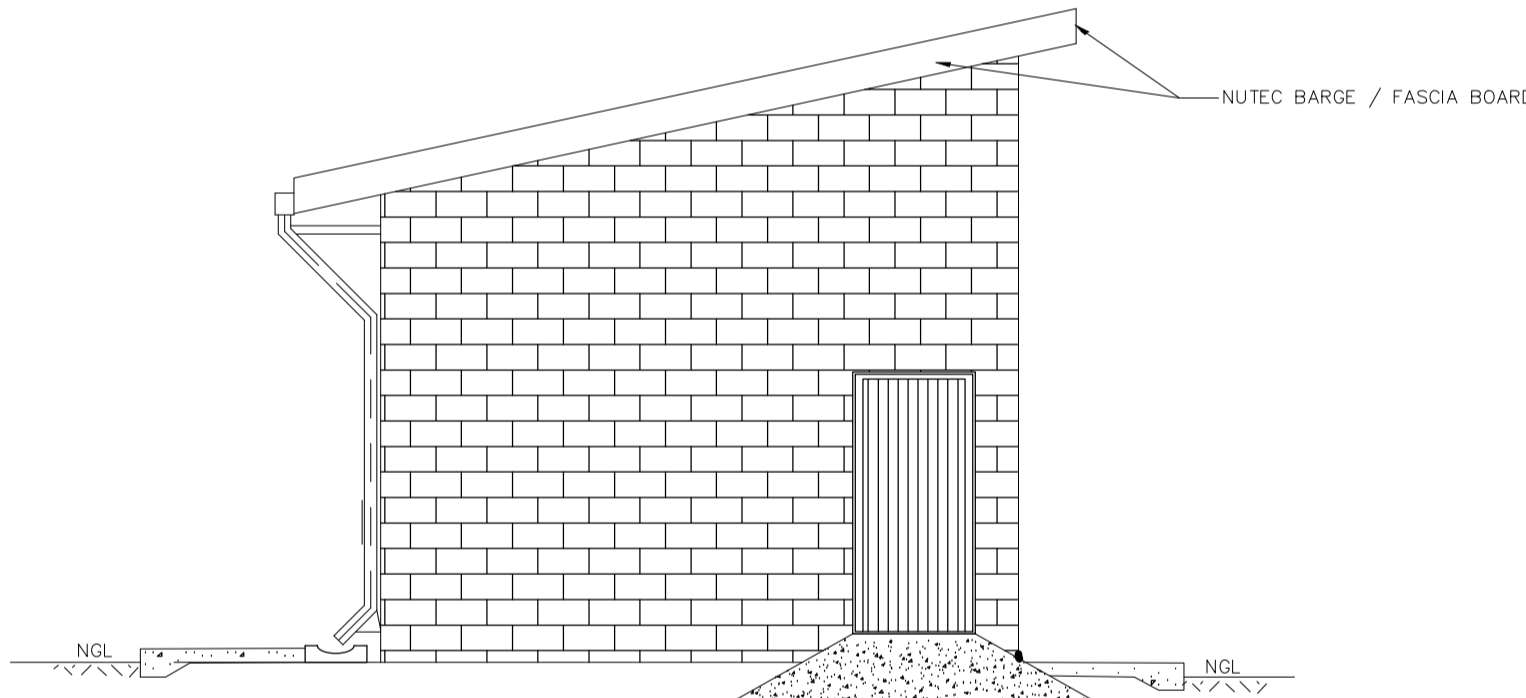


BACK
SCALE 1:50

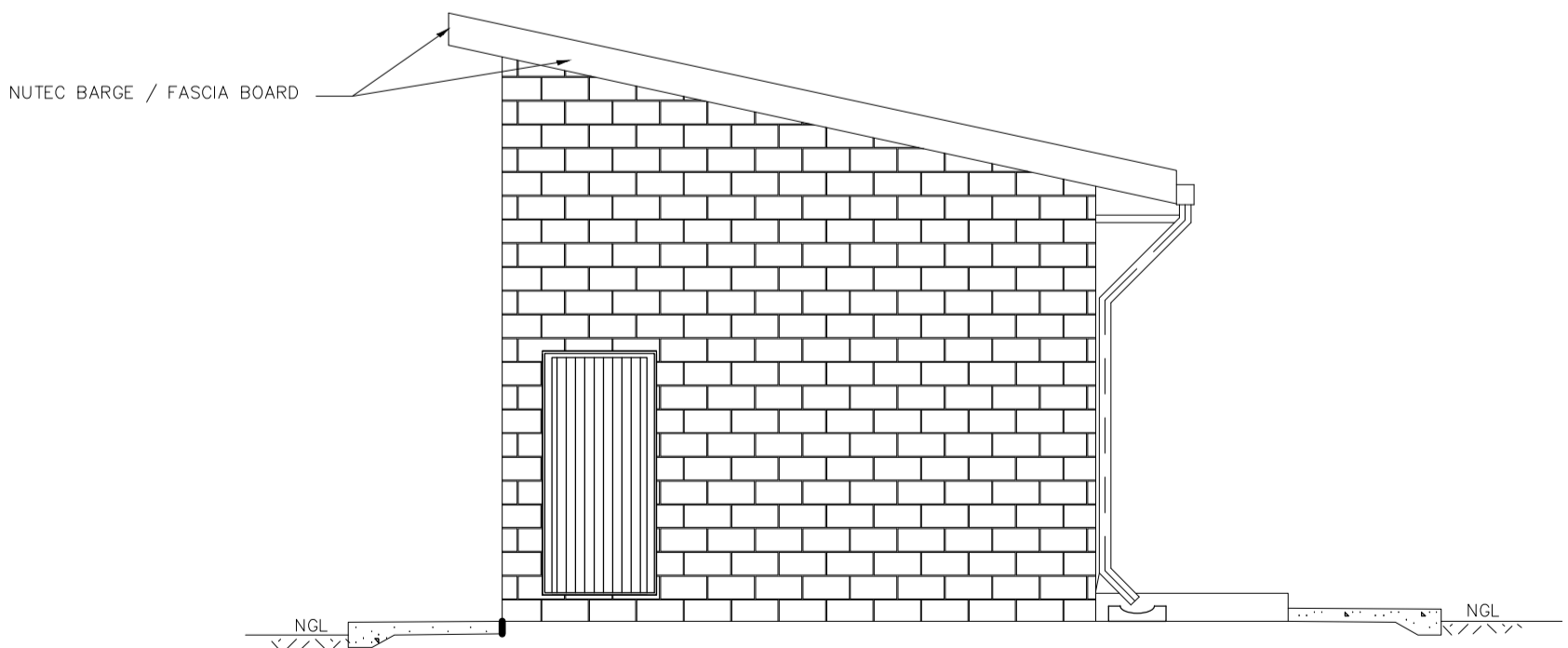
NUTEC FASCIA BOARD
0.6mm KLIPOLOCK CHROMADEK PROFILE ROOF SHEETING
12" ON SISALATION ON 76x50mm S.A.
PINE PURLINS @ 900mm C/Cs ON
PREFABRICATED TIMBER TRUSSES TO
ENGINEER'S DETAIL AND SPECIFICATION



SECTION A-A
SCALE 1:50



SIDE
SCALE 1:50



SIDE
SCALE 1:50

GENERAL NOTES:

- ALL WORK TO BE CARRIED OUT IN ACCORDANCE WITH THE NATIONAL BUILDING REGULATION AND SABS 0400 OF 1990
- CONTRACTOR TO READ ONLY FIGURED DIMENSION
- CONTRACTOR TO VERIFY ALL DIMENSION ON SITE BEFORE COMMENCING WITH ANY WORK.

WINDOW SCHEDULE	
WINDOW NO.	N2
CATALOGUE	NE7
FRAME	1022 x 654mm HIGH STANDARD STEEL WINDOW FRAME
FRAME FINISH	SPOT PRINING DEFECTS IN PRE-PRIME SURFACE WITH ZINC CHROMATE PRIMER & APPLY ONE UNIVERSAL UNDER COAT & TWO COATS EPW GOLDEN BROWN GLOSS ENAMEL PAINT ON STEEL
GLAZING	6.28mm OBSCURE SAFETY GLASS
NO. REQUIRED	3

WINDOW SCHEDULE	
WINDOW NO.	N1
CATALOGUE	NE1
FRAME	533 x 654mm HIGH STANDARD STEEL WINDOW FRAME
FRAME FINISH	SPOT PRINING DEFECTS IN PRE-PRIME SURFACE WITH ZINC CHROMATE PRIMER & APPLY ONE UNIVERSAL UNDER COAT & TWO COATS EPW GOLDEN BROWN GLOSS ENAMEL PAINT ON STEEL
GLAZING	6.28mm OBSCURE SAFETY GLASS
NO. REQUIRED	6

ENTRANCE DOOR	
FRAME TYPE	SINGLE REBATE STEEL FRAME TO FIT 220mm WALL (D1)
FRAME FINISH	PRIME AND PAINT UNDERCOAT AND 2no. FINISHING COATS IN GLOSS ENAMEL COLOUR TBC
DOOR LEAF	44mm FRAMED LEDGED AND BRACED DOOR SIZE 813x2032mm INCLUDING EXTERNAL WEATHER BAR
LEAF FINISH	UNDER COAT AND MINIMUM 2 COATS GLOSS ENAMEL - COLOUR TBC
LOCK	3 LEVER MORTICE LOCK SET
IRONMONGERY	100mm BRACE CABIN HOOK

CUBICLE DOOR	
FRAME TYPE	SINGLE REBATE STEEL DOOR FRAME - SIZE 813x53mm (FRAME UNDERCUT TO 150mm)
FRAME FINISH	PRIME AND PAINT UNDERCOAT AND 2 COATS- GLOSS ENAMEL - COLOUR TBC
DOOR LEAF	44mm FRAMED LEDGED EMBRACED DOOR SIZE 813x2032mm (DOOR RAISE BY 150mm TO TOP OF FRAME)
LEAF FINISH	UNDER COAT AND MINIMUM 2 COATS GLOSS ENAMEL - COLOUR TBC
LOCK	TOILET INDICATOR LOCK
IRONMONGERY	100mm CHROME PLATED "D" TYPE HANDLE 3 BY SOLID BRACE HINGES

BUGLAR DOOR	
TYPE G1	2 OFF
POSITION	EXTERNAL TOILET BLOCK
DOOR TYPE	PURPOSE MADE SQUARE HOLLOW SECTION MILD STEEL SECURITY GATE
DOOR FINISH	1xCOAT ZINC CHROMATE PRIMER MINIMUM 2 x COATS GLOSS ENAMEL (EXTERNAL QUALITY)
FRAME	50x38x1.6mm M.S. RECTANGULAR HOLLOW SECTION FRAME
FRAME FINISH	1xCOAT ZINC CHROMATE PRIMER MINIMUM 2 x COATS GLOSS ENAMEL (EXTERIOR QUALITY)
DOOR	380x26x1.6mm RECTANGULAR HOLLOW SECTION FRAME WITH 25x25x1.6 INTERMEDIATES AT 100mm CENTERS AT A 45° ANGLE COLOUR TBC
IRONMONGERY	SECURITY DOUBLE THROW DEAD LOCK (NO LATCH)

COPYRIGHT HELD BY :
NEMORANGO CONSULTING ENGINEERS cc
"Copyright subsists in this work. Any unauthorised reproduction in any manner or form, publication, making an adaptation of the work and doing in in relation to an adaptation of the work, any of the work, any of the acts above, are acts of copyright infringement and make the DOER liable for civil law copyright infringement and may make the DOER liable to criminal prosecution."

DRAWING REFERENCE	
Drawing No.	Drawing Title

NOTES	

DRAWING AMENDMENTS			
No.	Amendment	Date	Appr.
1	ISSUED FOR : CONSTRUCTION	NOV 2021	TM
Designed E MUDAU		Date NOV 2021	
Checked T RAPHALALANI		Date NOV 2021	
Drawn E MUDAU		Date NOV 2021	
Client appr.		Date	

Consultant


CONSULTING ENGINEERS
e-mail : takalani@nemorango.co.za
(015) 295 2023 (015) 295 2024
10A HANS VAN RENSBURG POLOKWANE 0998 10A HANS VAN RENSBURG POLOKWANE 0998

Impl. Agent


A leading developmental NGO
LIMPOPO
PROVINCIAL GOVERNMENT
DEPARTMENT OF EDUCATION

Proj Name

CONSTRUCTION OF WATER & SANITATION INFRASTRUCTURE AT LEAKHALE PRIMARY SCHOOL IN LIMPOPO

Drawing Title

MD3
WATER BORNE TOILET

Proj Number TMT-LPDE-201920-LPCL5-04	Drawing No. TMT-LPDE-201920-LPCL5-03-005
---	---

Scale N.T.S.	Rev No. 0
-----------------	--------------