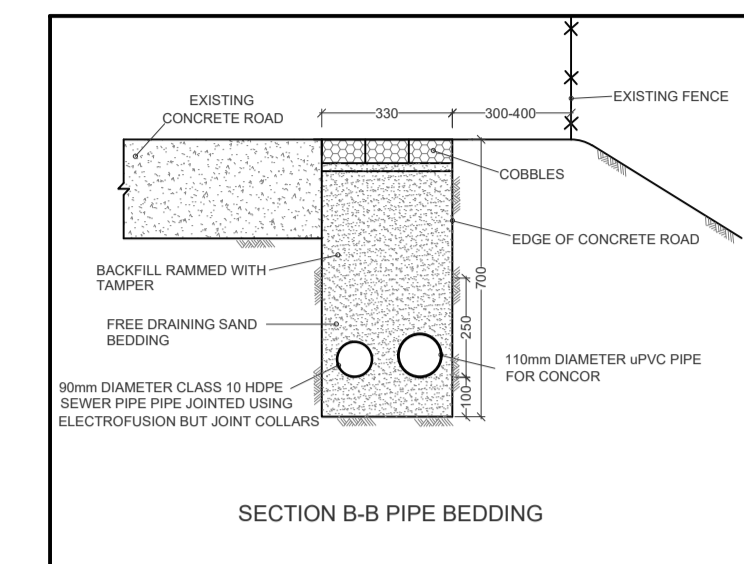
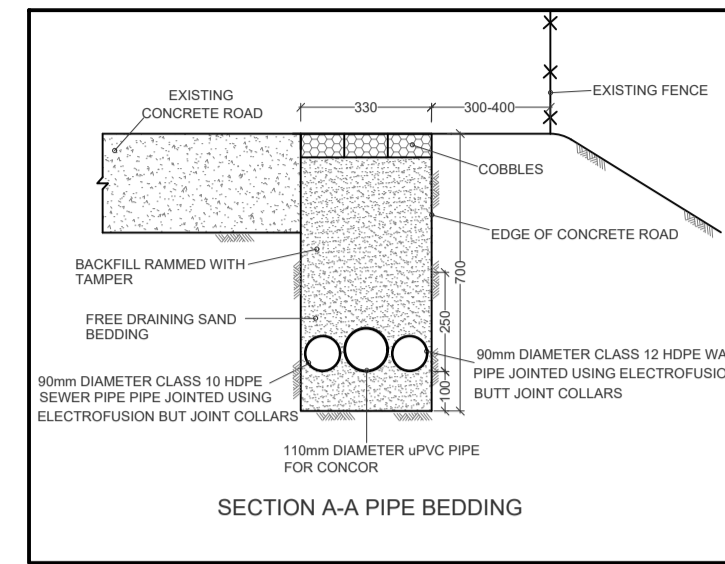


75mmØ CLASS 12 HDPE PUMP LINE TO MID-RESERVOIR
 90mmØ uPVC GRAVITY FEEDER LINE FROM MID-RESERVOIR
 110mmØ uPVC FOUL SEWER LINE FROM MACERATOR

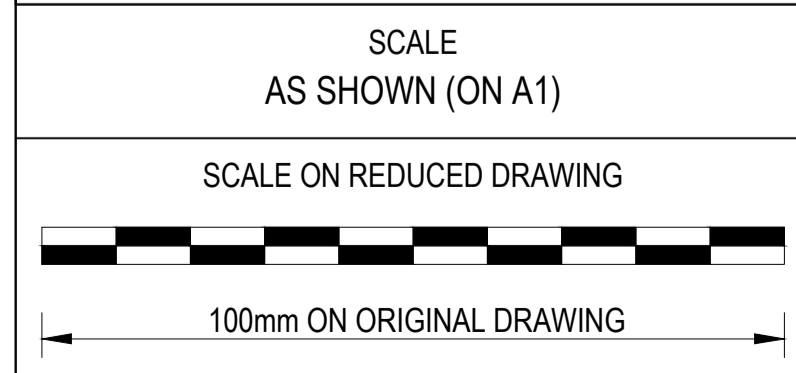
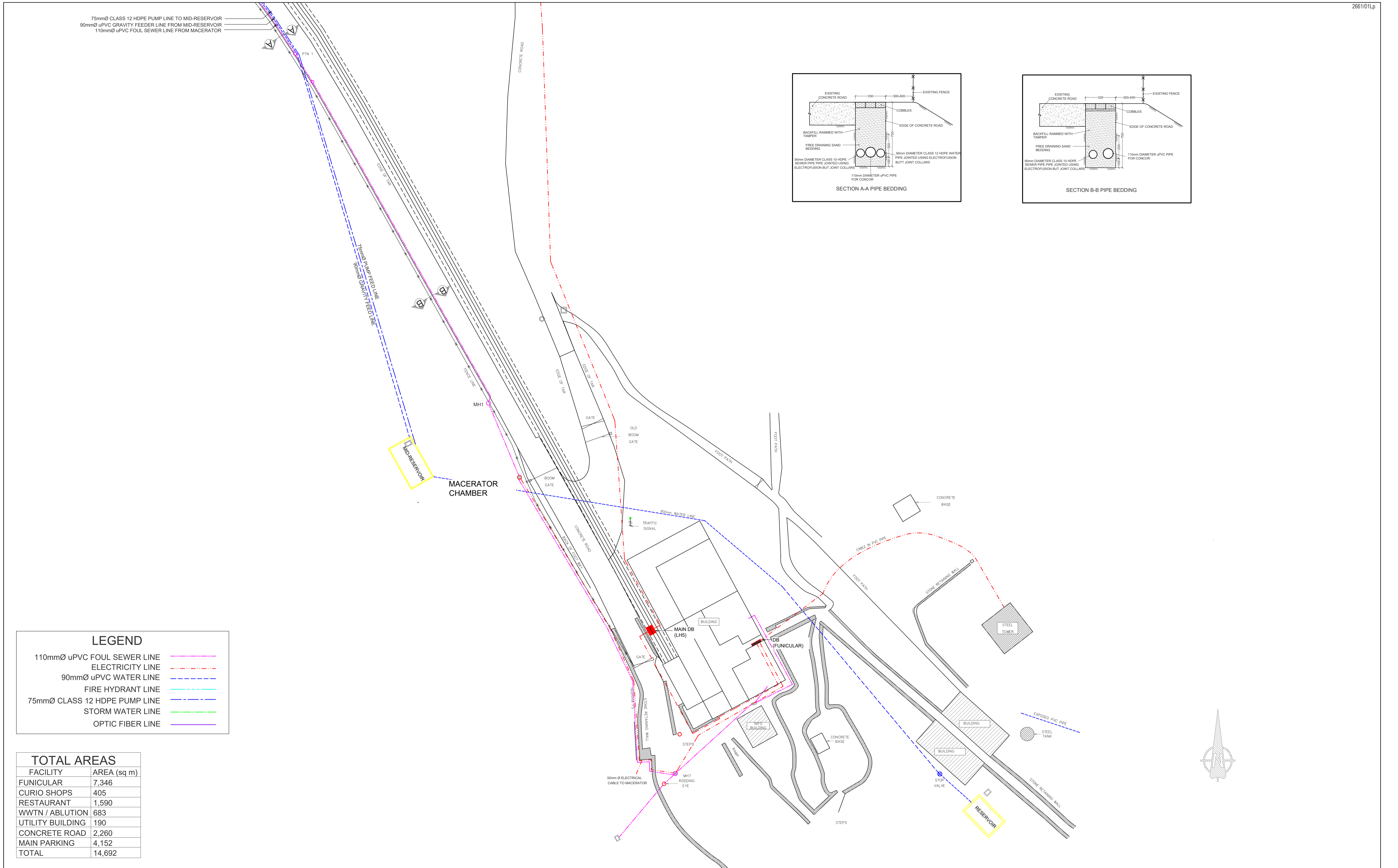


LEGEND

110mmØ uPVC FOUL SEWER LINE	-----
ELECTRICITY LINE	-----
90mmØ uPVC WATER LINE	-----
FIRE HYDRANT LINE	-----
75mmØ CLASS 12 HDPE PUMP LINE	-----
STORM WATER LINE	-----
OPTIC FIBER LINE	-----

TOTAL AREAS

FACILITY	AREA (sq m)
FUNICULAR	7,346
CURIO SHOPS	405
RESTAURANT	1,590
WWTN / ABLUTION	683
UTILITY BUILDING	190
CONCRETE ROAD	2,260
MAIN PARKING	4,152
TOTAL	14,692



NO	DATE	ORIGINAL VERSION	AMENDMENTS	D.D.L	APPROVED
0	06/2021	ORIGINAL VERSION		D. DE LANGE	

DESIGN BY	D. DE LANGE
DESIGN CHECKED	D. DE LANGE
DRAWN BY	V. GROBLER
DRAWING CHECKED	D. DE LANGE

**ROADS & HIGHWAYS
 A BUSINESS UNIT OF DIGITAL INDUSTRIES (PTY) LTD**
 UNIT B, 55 SKAAMROSIE STREET
 PROTEA VALLEY, 7530
 TEL: +27 21 913 0310

CAPE POINT LAYOUT
 UPPER PRECINCT

**South African
 NATIONAL PARKS**

NOTED BY	TYPE OF DRAWING	DETAIL
p. SANPARKS	CONTRACT NUMBER	
APPROVED BY	DRAWING NUMBER	2661/R&H/01Lp
2021/05/03	REVISION NUMBER	0
p. ROADS AND HIGHWAYS		