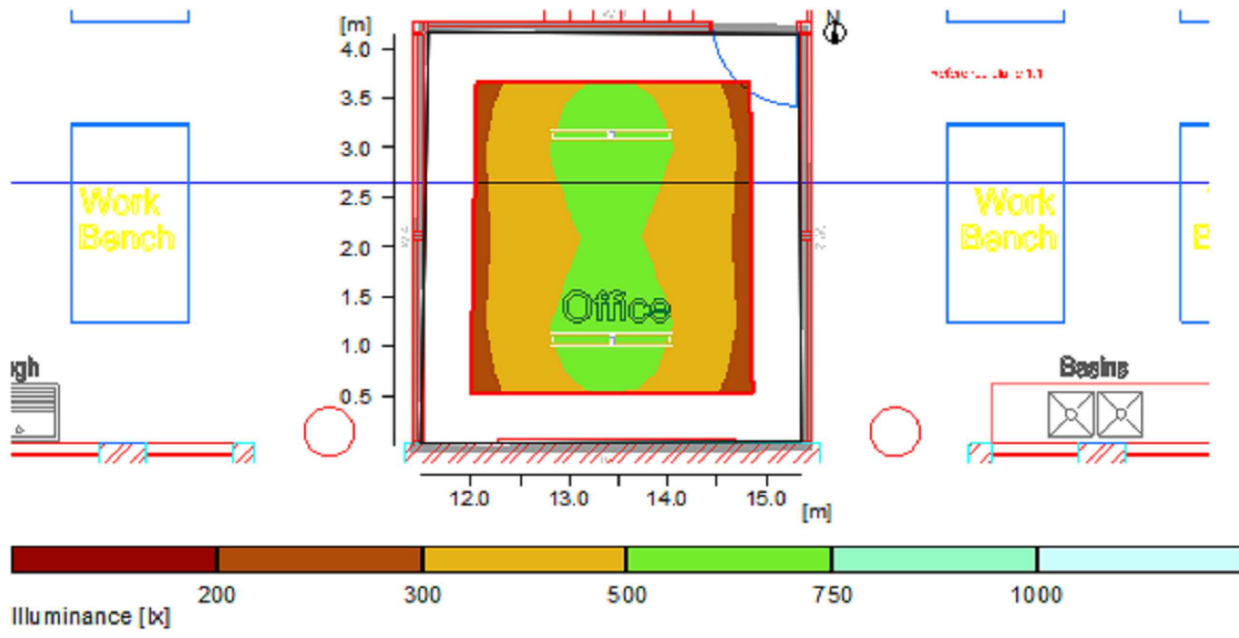


Project number : CE0092  
Date : 25.03.2020

#### 4 Office

##### 4.2 Summary, Office

###### 4.2.1 Result overview, Evaluation area 1



<b>General</b>		
Calculation algorithm used		Average indirect fraction
Height of luminaire plane		2.30 m
Maintenance factor		0.80
Total luminous flux of all lamps		9900.00 lm
Total power		68.0 W
Total power per area (15.70 m²)		4.33 W/m² (1.04 W/m²/100lx)
<b>Evaluation area 1</b>		
	<b>Reference plane 1.1</b>	
	Horizontal	
Em	418 lx	
Emin	279 lx	
Emin/Em (Uo)	0.67	
Emin/Emax (Ud)	0.48	
UGR (3.6H 3.9H)	<=22.0	
Position	0.75 m	
<b>Major surfaces</b>		
M 1.5 (Ceiling)	Em	Uo
M 1.1 (Wall)	132 lx	0.62
M 1.2 (Wall)	268 lx	0.63
M 1.2 (Wall)	170 lx	0.75
M 1.3 (Wall)	273 lx	0.63

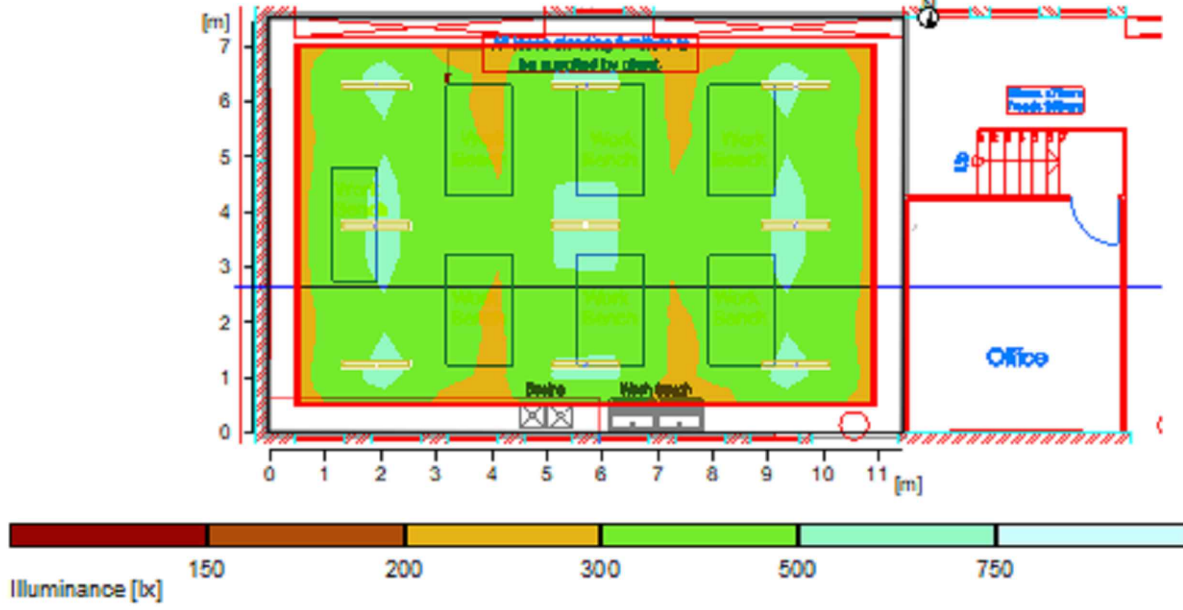
RELUX®

Project number : CE0092  
Date : 25.03.2020

#### 2 workshop 1

##### 2.2 Summary, workshop 1

###### 2.2.1 Result overview, Evaluation area 1



<b>General</b>		
Calculation algorithm used	Average indirect fraction	
Height of luminaire plane	2.30 m	
Maintenance factor	0.80	
Total luminous flux of all lamps		44550.00 lm
Total power		308.0 W
Total power per area (85.43 m²)		3.58 W/m² (0.93 W/m²/100lx)
<b>Evaluation area 1</b>		
	<b>Reference plane 1.1</b>	
	Horizontal	
Em	384 lx	
Emin	280 lx	
Emin/Em (Uo)	0.68	
Emin/Emax (Ud)	0.47	
UGR (7.1H 10.8H)	<=24.9	
Position	0.75 m (rot. 0°/0.05°)	
<b>Major surfaces</b>		
	Em	Uo
M 1.5 (Ceiling)	129 lx	0.66
M 1.1 (Wall)	255 lx	0.68
M 1.2 (Wall)	183 lx	0.70
M 1.3 (Wall)	254 lx	0.67
M 1.4 (Wall)	184 lx	0.71

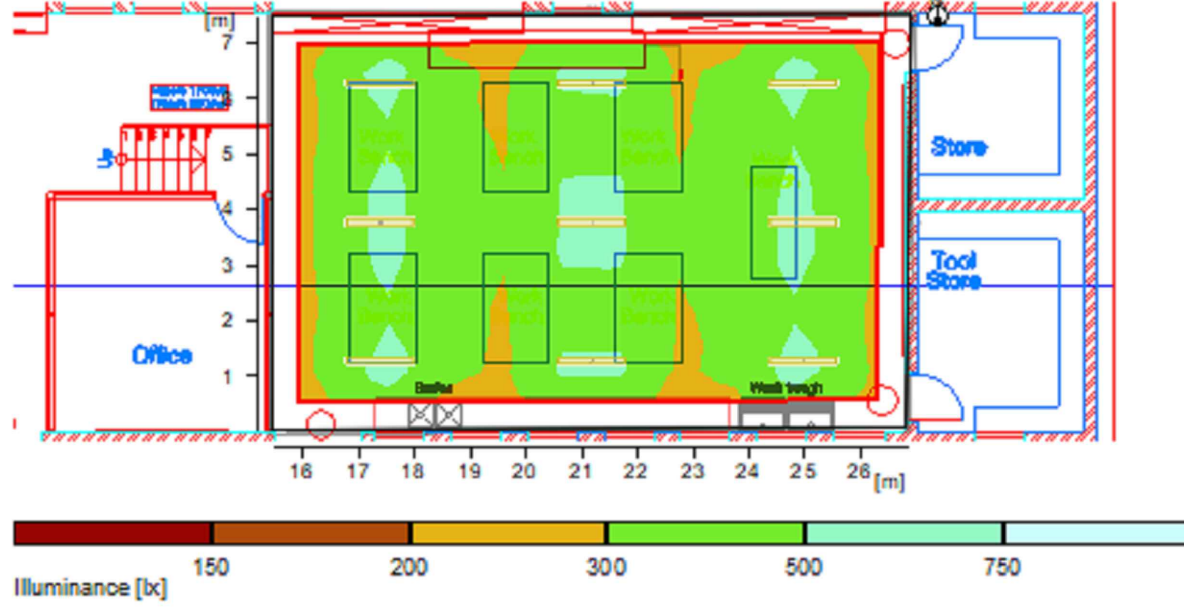
RELUX®

Project number : CE0092  
Date : 25.03.2020

#### 3 workshop 2

##### 3.2 Summary, workshop 2

###### 3.2.1 Result overview, Evaluation area 1



<b>General</b>		
Calculation algorithm used	Average indirect fraction	
Height of luminaire plane	2.30 m	
Maintenance factor	0.80	
Total luminous flux of all lamps	44 550.00 lm	
Total power	308.0 W	
Total power per area (84.32 m²)	3.63 W/m² (0.94 W/m²/100lx)	
<b>Evaluation area 1</b>	<b>Reference plane 1.1</b>	
	Horizontal	
Em	388 lx	
Emin	283 lx	
Emin/Em (Uo)	0.68	
Emin/Emax (Ud)	0.47	
UGR (7.0H 10.8H)	<=24.9	
Position	0.75 m	
<b>Major surfaces</b>	Em	Uo
M 1.5 (Ceiling)	127 lx	0.68
M 1.1 (Wall)	260 lx	0.66
M 1.2 (Wall)	190 lx	0.69
M 1.3 (Wall)	259 lx	0.66
M 1.4 (Wall)	186 lx	0.71

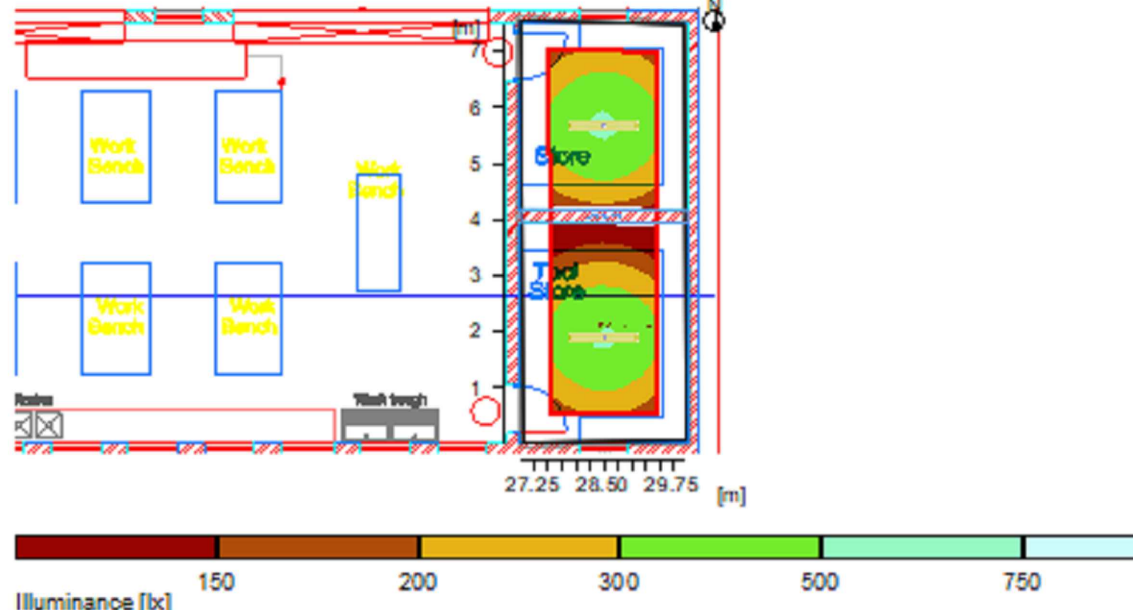
RELUX®

Project number : CE0092  
Date : 25.03.2020

#### 5 store room and tool store

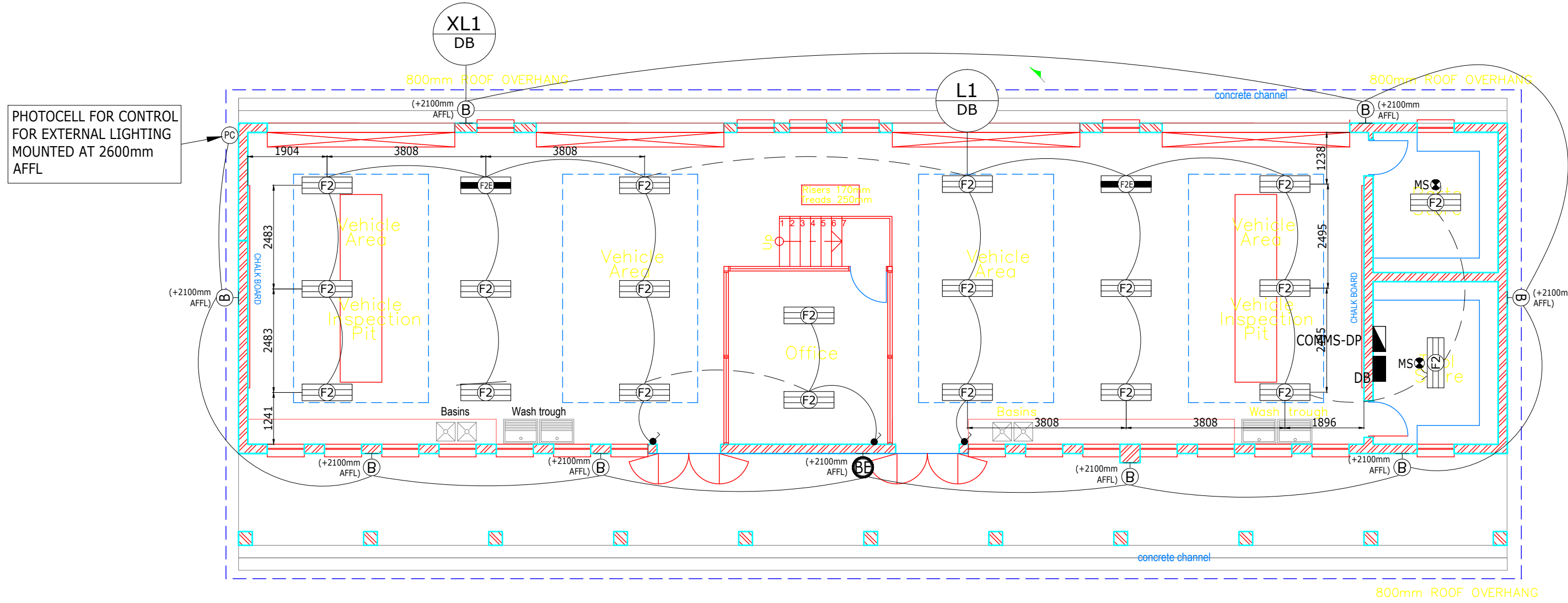
##### 5.2 Summary, store room and tool store

###### 5.2.1 Result overview, Evaluation area 1



<b>General</b>		
Calculation algorithm used	Average indirect fraction	
Height of luminaire plane	2.30 m	
Maintenance factor	0.80	
Total luminous flux of all lamps		9900.00 lm
Total power		68.0 W
Total power per area (21.77 m²)		3.12 W/m² (1.08 W/m²/100lx)
<b>Evaluation area 1</b>		
<b>Reference plane 1.1</b>		
Horizontal		
Em	290 lx	
Emin	113 lx	
Emin/Em (Uo)	0.39	
Emin/Emax (Ud)	0.23	
UGR (2.8H 7.1H)	<=22.2	
Position	0.75 m	
<b>Major surfaces</b>		
Em	Uo	
M 1.5 (Ceiling)	95 lx	0.01
M 1.1 (Wall)	142 lx	0.84
M 1.2 (Wall)	138 lx	0.51
M 1.3 (Wall)	149 lx	0.82
M 1.4 (Wall)	138 lx	0.53

RELUX®



LIGHTING LEGEND	
■	ELECTRICAL DISTRIBUTION BOARD
—(F1)—	1230mm 2x 18W LED OPEN CHANNEL BATTEN LUMINAIRE C/W ECG.
—(F2)—	AS ABOVE BUT WITH EMG BATTERY BACKUP (50% FOR 1HR) AND SELF TEST INVERTER.
—(F3)—	1230mm 35W LED BATTEN LUMINAIRE WITH COVER
—(F4)—	AS ABOVE BUT WITH EMG BATTERY BACKUP (50% FOR 1HR) AND SELF TEST INVERTER.
⊙	14W LED DOWNLIGHTER.
⊙	WALL MOUNTED LED BULKHEAD FITTING WITH 24W LED LAMP.
⊙	CEILING / SOFFIT MOUNTED LED BULKHEAD FITTING WITH 24W LED LAMP.
⊙	AS ABOVE BUT WITH EMG BATTERY BACKUP (50% FOR 1HR) AND SELF TEST INVERTER.
⊙	MOTION SENSOR FOR CONTROL OF LOCAL LIGHTING (SET TO 30min).
⊙	LIGHT SWITCH MOUNTED AT 1000mm AFFL TO CENTRE 100mm AWAY FROM DOOR FRAME.

NOTE	
LIGHT FITTINGS TO BE SPLIT OVER ALL THREE PHASE PHASES RED, WHITE & BLUE TO ELIMINATE STROBOSCOPIC EFFECT	

No.	DATE	AMENDMENT	
A	11/5/21	ISSUED FOR TENDER	D.A.
B	1/10/21	UPDATED FOR TENDER	D.A.

Copyright vests in the  
Department of Public Works

as-built drawings

certified as-built drawings as per Centralised Drawing  
Archive AS-BUILT DRAWING REQUIREMENTS

name: \_\_\_\_\_

date: \_\_\_\_\_

professional registration no.: \_\_\_\_\_

cad file name	page type
E6(18)(b)	A 2



consultant

discipline ELECTRICAL

service

TROMPSBURG  
SPECIAL SCHOOL  
ELECTRICAL AND ELECTRONIC

WCS number EDIT

drawing title  
AUTO BODY WORKS  
LIGHTING LAYOUT

ref.no. EDIT	designed K.NEL
scale 1:100	drawn D.ALBIN
date 2018.11.02	checked K.NEL
DPW drawing number	

E6(34)(b)