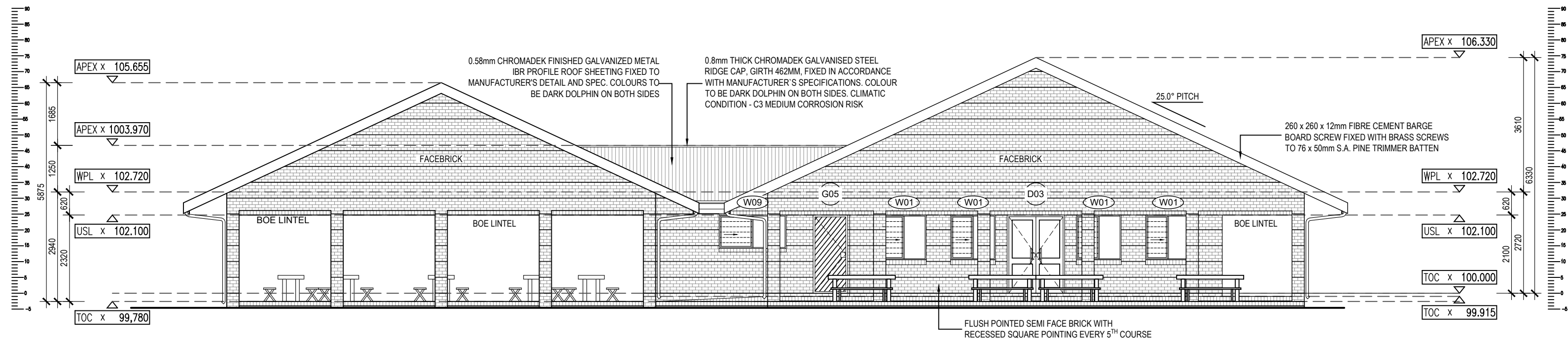
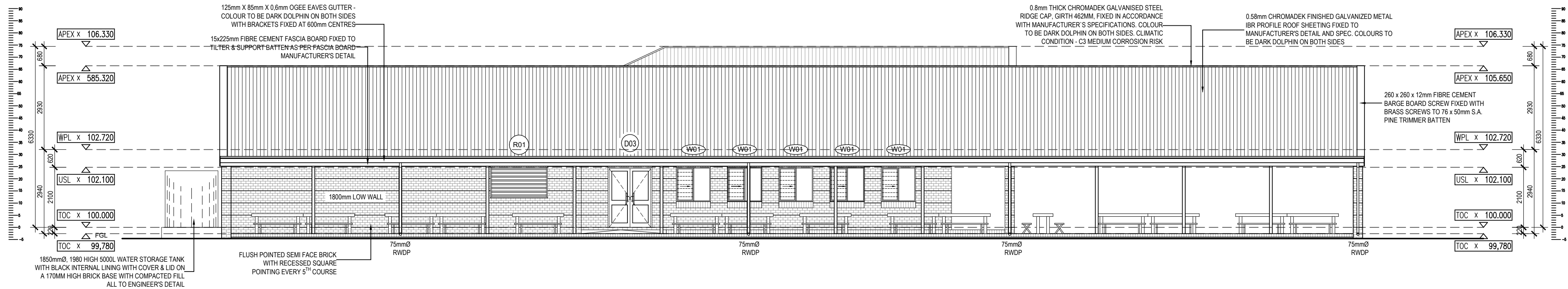


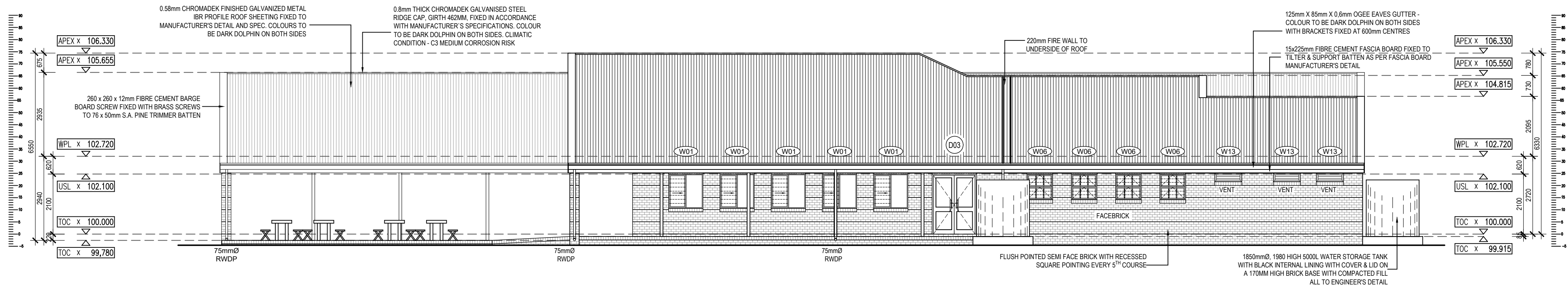
ELEVATION 3
SCALE 1:100



ELEVATION 4
SCALE 1:100



ELEVATION 1
SCALE 1:100



ELEVATION 2
SCALE 1:100

NOTES

INTERNAL WALLS -

SINCE SOME INTERNAL WALLS ARE FACE BRICK UP TO DADO LEVEL, ALL WATER, ELECTRICAL AND GAS INSTALLATIONS TO BE DISCUSSED AND AGREED ON SITE PRIOR TO ERECTION OF WALLS.

WATER, ELECTRICAL AND GAS INSTALLATIONS TO BE BUILT INTO FACE BRICK WALLS WHERE NEEDED AS NO CHASING CAN BE DONE AFTER CONSTRUCTION THEREOF

NO SURFACE MOUNTED SERVICES ARE ALLOWED, APPROPRIATE "S/S 1216 COMPOSITE PIPE" TO BE USED WHEN PIPING IS INSTALLED WITHIN WALLS AND FLOOR SLABS. INSTALLATION TO BE DONE BY CERTIFIED GAS INSTALLER.

FURNITURE -

FOR LOOSE AND FIXED FURNITURE REFER TO FURNITURE SCHEDULE AND JOINERY DRAWINGS.

STORM WATER

POSITION OF TANKS AND CONCRETE RAINWATER CHANNEL TO SUIT SITE CONDITIONS AS PER SITE LAYOUTS TO ACCOMMODATE STORMWATER AND OVERFLOW, TO CIVIL ENG'S DESIGN AND DETAIL

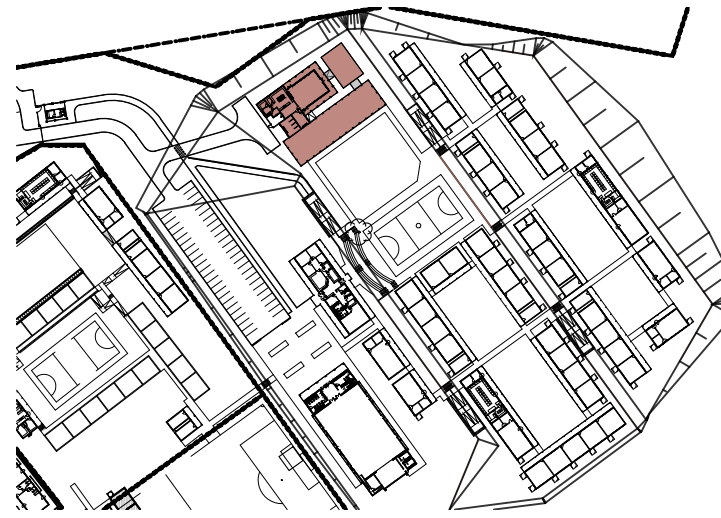
TRUSS

TRUSS MANUFACTURE TO SUBMIT A WORKSHOP DRAWING FOR APPROVAL

| NO. | DATE | REVISION | DRAWN |
|-----|--------------------------|--|-----------|
| A | 2017-02-02 | ISSUED FOR MEASURE | SG |
| B | 2017-02-16 | ISSUED FOR INFORMATION | SG |
| C | 2017-07-27 | 1. TOP OF CONCRETE LEVEL CHANGED 2. ELEVATION NAMES UPDATED 3. NSL INDICATED 4. ISSUED FOR MEASURE | SG |
| D | 2017-08-10 | 1. TOP OF CONCRETE LEVEL REVISED 2. ISSUED FOR MEASURE | SG |
| E | 2017-12-07 | 1. TOP OF CONCRETE LEVEL REVISED 2. REPLACED WINDOWS WITH PANEL VENTS 3. INCREASED SIZE OF GAZEBO TO ACCOMMODATE 600+ STUDENTS | OM |
| F | 2018-03-19 | 1. TOP OF CONCRETE LEVEL REVISED 2. ISSUED FOR INFORMATION | SG |
| G | 2018-03-29 | 1. VEG STORE MOVED TO NEW POSITION. 2. DELIVERY AREA ADDED TO PLAN. 3. ISSUED FOR INFORMATION. | SG |
| H | 2021-03-01 | ISSUED FOR INFORMATION 1. ROOF PITCH CHANGED TO 25° 2. ROOF CHANGED TO GABLE END 3. CHANGED 300 x 200mm VERANDAH COLUMNS TO 100 x 100mm STEEL POSTS 4. ADDED RAINWATER TANKS | DW RJS |
| J | 2022-07-08 2022-04-15 | ISSUED FOR MEASURE ISSUED FOR INFORMATION (EFMS) 1. DWG NO. CHANGED FROM 1617 TO 2204 | DW |
| AA | 2022-08-18 | ISSUED FOR MEASURE - SEE REV J 1. LEVELS INDICATED USING 100.000 AS T.O.C. | DW |

ISSUED FOR
APPROVAL

KEY



PSP

ARCHITECT



ARCHITECTURAL PROFESSIONAL SACAP NUMBERS:

H.L. MANTEL SACAP 3045

IMPLEMENTED BY

INDEPENDENT
DEVELOPMENT
TRUST

| SIGNATURE | DATE | SHEET NO. |
|-----------|-----------|------------------|
| - | - | A1 |
| DESIGNED | SCALE | 1:100 |
| OM | 6/13/2017 | STATUS LISTING |
| OM | - | I = INFORMATION |
| OM | - | FM = FOR MEASURE |
| OM | - | T = TENDER |
| OM | - | C = CONSTRUCTION |
| OM | - | AB = AS BUILT |

CLIENT



IMPLEMENTING AGENT



PROJECT
DOE PORTFOLIO PROGRAMME
ESTABLISHMENT OF NEW SCHOOLS
HILLBROW - SENIOR SECONDARY SCHOOL
PROVINCE: EASTERN CAPE PROVINCE
DRAWING TITLE
NUTRITION CENTER (BLOCK S-C)
ELEVATIONS

DRAWING DESCRIPTION
DNC-D

Stand Co-Ordinates:

| EMS NUMBER | DISCIPLINE | DRAWING NUMBER | STATUS | REVISION |
|------------|------------|--------------------|--------|----------|
| 200500293 | ARCH | 2204 w03 01/204 | FA | AA |