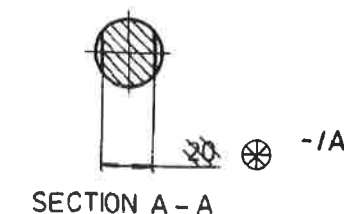
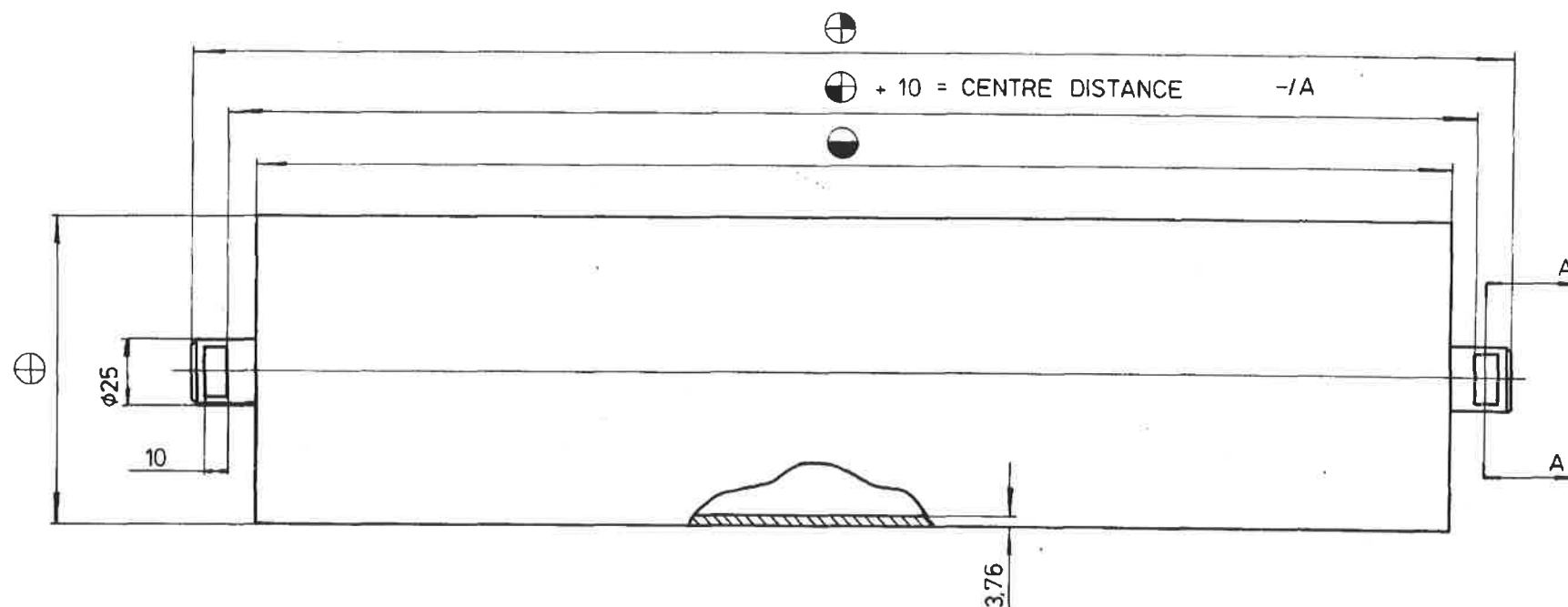


CME 8270
15-000

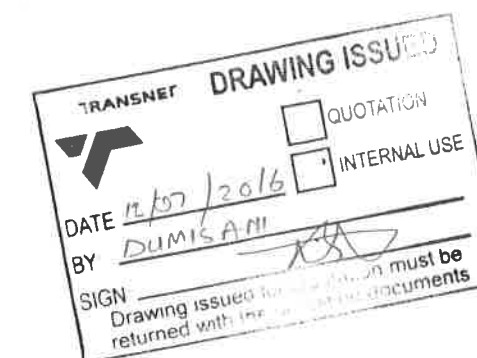
PROJECTION
PROJEKSIE



-/B ~~AK~~

DIMENSION $\otimes = 15/12$	CONVEYOR BELT SYSTEM	A1,A2,A3,B1,B2,C3,C4,D2,D3,J2,J3,K1,K2,K3,K10,K11,K13,K14,K18,K19,N1,N2,O2,P1.
DIMENSION $\otimes = 18$	CONVEYOR BELT SYSTEM	C2,D1,E1,E2,E3,E4,E5,F1,F2,F3,G1,H2,H3,L1,L2,M1,M2,N3,O3,P2.

ITEM NO.	STORES IT. NO.		\oplus	\ominus	\oplus	\oplus	CONVEYOR BELT SYSTEM
1	36/18299	SIDE	ϕ 125	483	495	525	A1,A2,A3,B1,B2,C3,C4,D2,D3,J2,J3,K1,K2,K3,K10,K11,K13,K14,K18,K19,N1,N2,O2,P1.
2	36/18303	CENTRE	ϕ 125	533	545	575	A1,A2,A3,B1,B2,C3,C4,D2,D3,J2,J3,K1,K2,K3,K10,K11,K13,K14,K18,K19,N1,N2,O2,P1.
3	36/18416	SIDE & CENTRE	ϕ 127	500	510	540	C2,D1,E1,E2,E3,E4,E5,F1,F2,F3,G1,H2,H3,L1,L2,M1,M2,N3,O3,P2.
4	36/18428	SIDE & CENTRE	ϕ 127	560	573	603	G1
5	36/18808	SIDE	ϕ 125	432	450	480	U1,U2,U3
6	36/18299	CENTRE	ϕ 125	483	495	525	U1,U2,U3



-/A

TENDERERS ARE TO NOTE THAT:

1. THE ROLLER SHALL BE OFFERED COMPLETE IN ALL RESPECTS
2. THE ROLLER SHALL BE MOUNTED ON HEAVY DUTY, WEATHER SEALED, BALL BEARINGS. (FULL DETAILS TO BE FURNISHED)
NOTE: SEALS SHALL BE SUITABLE TO PREVENT INGRESS OF WATER WHEN CONVEYOR HOSED DOWN.
3. A FULLY DIMENSIONED DETAILED DRAWING OF THE ROLLER, INCLUDING AN END SECTION THROUGH THE ROLLER DEPICTING METHOD OF FITTING BALL BEARING, SEAL ARRANGEMENT AND METHOD OF CONSTRUCTION OF THE ROLLER, ETC., SHALL BE SUBMITTED WITH THE OFFER.

FOR TENDERING PURPOSES ONLY.

G

-/B
DIMENSION ALTERED
REF. MYD 6/4/1/3/3
OF: 1987 - 08-19
J.A.C.

-/A
DIMENSIONS ADDED
REF. MYD 6/4/1/3/3
DATE 83-09-26 F.M.
RENUMBERED FROM
DRG. R.B. 0008
REF. MXL. 6/4/1/3/3
DATE 1-8-83 WC.
AMENDMENTS
WYSIGINGS
MASS
MASSA
MATERIAL-MATERIAAL

ASSEMBLY DRG SAMESTELTEK. No.								DRN-GET	TC.
SUPERSEDES/REPLACES DRG VERVANG TEK. No.								TCO-NGT	TC.
CLASS OR TYPE KLAS OF TIPE								CKD-NGS	
								APPROVED GOEDGEK	
								REF. VERW.	
								DATE DATUM	
SEPIA TO M.E. SEPIA AAN M.I.								SCALE SKAAL	N.T.S.

WORKSHOP MECH. S.A.R. - S.A.S. RICHARDS BAY
ROLLER, CONVEYOR IDLER TROUGH.

STORES
MAG. IT. No.
No. CME 8270
15-000/
AMENDMENT
WYSIGING A/B



A2

DIMENSIONS IN mm EXCEPT WHERE OTHERWISE INDICATED
AFMETINGS IN mm BEHALWE WAAR ANDERS AANGEDUI