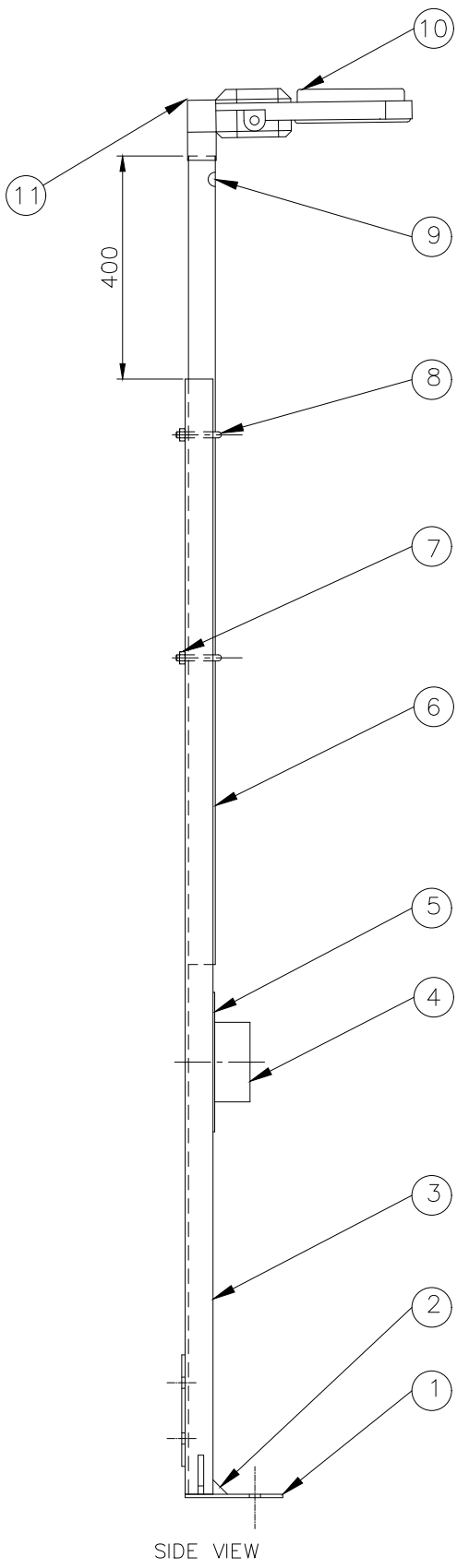
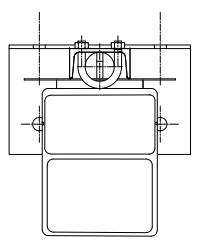


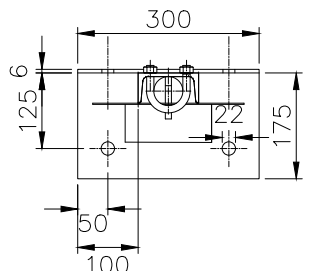
FRONT VIEW



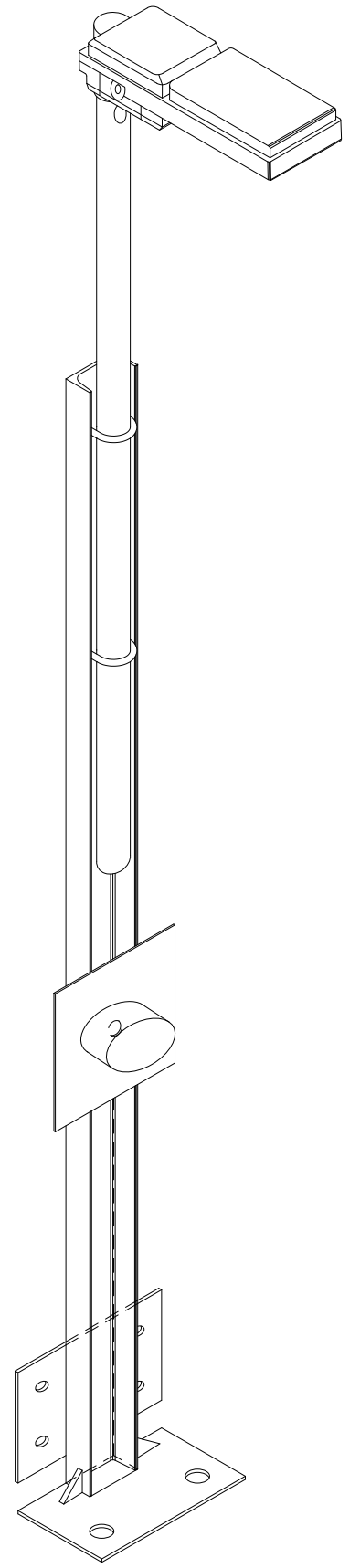
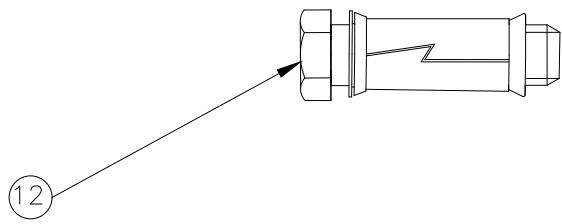
SIDE VIEW



TOP VIEW



SECTION VIEW A-A



ISOMETRIC DETAILS

GENERAL NOTES:

1. ALL WELDS TO BE 6mm FILLET WELDS ALL ROUND U.O.S.
2. SMOOTH ALL SHARP EDGES.
3. THE WHOLE STRUCTURE TO BE GALVANIZED TO SABS 1461.
4. M16 RAWL BOLTS TO BE USED ON STRUCTURE & M20 RAWL BOLTS TO SECURE THE FLOOR AND GROUT TO FILL FLOOR GAB.
5. ALL BOLTS TO BE GRADE 4.8 SABS 135 SPEC (GALV WITH WASHERS & NUTS).
6. APPROXIMATE LENGTHS PROVIDED, EXACT LENGTH TO BE DETERMINED ON SITE.
7. MATERIAL GRADE 350WA SABS 1431.

ITEM	DESCRIPTION	NO PER ASSEMBLY	DWG NO STORES ITEM SPEC NO	REMARKS
12	RAWL BOLT TO SUIT M16 AND M20 POLE MOUNTING HOLES	6		PURCHASE
11	POLE MOUNTING BRACKET	1		PURCHASE
10	SUITABLE POLE MOUNTED LUMINAIRE	1		PURCHASE
9	GROMMET	1		PURCHASE
8	M12 "U" BOLT	1		PURCHASE
7	M12 WASHERS AND NUTS	1		PURCHASE
6	SUPA POLE - 50mm OD	1		PURCHASE
5	JUNCTION BOX MOUNTING PLATE FOR EX	1		FREE ISSUE
4	3-WAY JUNCTION BOX TYPE EX WITH GLANDS	1		FREE ISSUE
3	CHANNEL SUPPORT 100X50X--	1		PURCHASE
2	GUSSET SUPPORT 10mm THICK MILD STEEL	2		PURCHASE
1	BASE PLATE 6mm THICK MILD STEEL	2		PURCHASE

-01/ADDED RAWL BOLTS, AMENDED DRAWINGS
T.N 2022/07/28

REVISIONS

PROJECT NAME

DRAWN	DBN	REF.	DATE
TRACED	CAD		13/05/2021
CHECKED	K.N	APPROVED	

SCALE N.T.S
DRAWING No. PL -121579

REV 01

PROPOSAL

TRANSNET
pipelines

TYPICAL BUND MOUNTED LIGHT POLE
(FOR MANIFOLD LIGHTING POLES)