

- Meeting Rooms
- Reception
- Psychometric Assessment Centre
- Security
- Trans-Africa Projects
- Visitor's waiting area



look out

Be aware. Take care.

Warm looking out self and my hers.

Being water-wise is sustainable

Water is a precious resource and is essential for life. Eskom is committed to water conservation and sustainable water use.

Fraud, corruption and maladministration cost us all

Report fraud, corruption and maladministration to the Eskom Fraud Investigation Unit on 011 900 0011 or 0800 11 27 22.

Interiors



Section 9

Materials	3
Paint and Wallpaper	4
Blinds and Curtains	5
Carpets	6
Tiles and Polyflor	7
Furniture	8
Accessories	9
Exterior Finishes	10

Upholstery (Chairs and Couches)

*Fabric: Weavers World
Colour and Code: See Image*

Screens

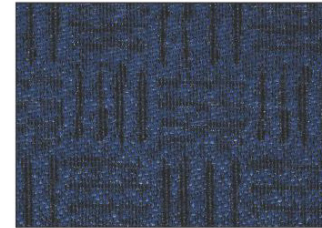
*Fabric: Weavers World
Colour and Code: See Image*

*(All fabrics are available from Weavers Warehouse.
Contact Steve at 011 464 1781)*

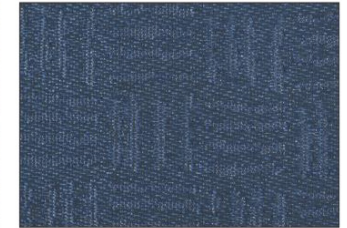
Upholstery for screens



Eskom gold screen 20637C

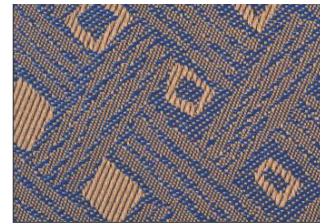


Eskom dark blue screen 20630B

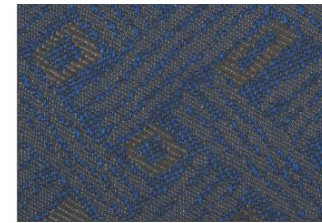


Eskom light blue screen 41638A
Reflects sufficient light for 'green' requirements

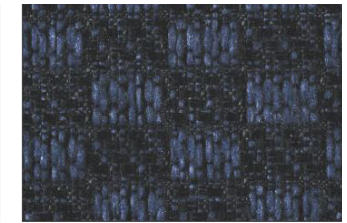
Upholstery for chairs and couches



Eskom inspiration gold 20532



Eskom inspiration blue 20628D



Eskom determination blue E7

Screens



Desks



Paint

Plascon Colour Inspired

- Y1-C2 – 3 (Pale Linen) or
- Y2-D2 – 3 (Veldrift) or
- Y2-D2 – 2 (Stone Wash)
- Y2-D2 – 1 (Waxen Tint)

Blue paint as an accent colour (any paint that matches Eskom's blue – Pantone 287). Only to be used as an accent colour in very small amounts. Plascon has also matched a blue colour: S3560-R80B.

You may choose any of the four colours above. You may apply one colour only, or two or three or all four, but only from the range above. Any of the four colours above may be applied. (Use one or more colors from the list above.)

Wallpaper

Majestic range: Fibreglass (paint it with any of the suggested paint colours) OR

Majestic range: Caro-Line No CRA 201 (warm, beige colour) OR

Décor: Capri No 5543 (same colour as paint)

Office space



Blinds

Only blinds in front of windows: Blinds must be in the same colour as the wallpaper or the wall paint, or it must be the same blue as the upholstery material (only the same colour – not the same material).

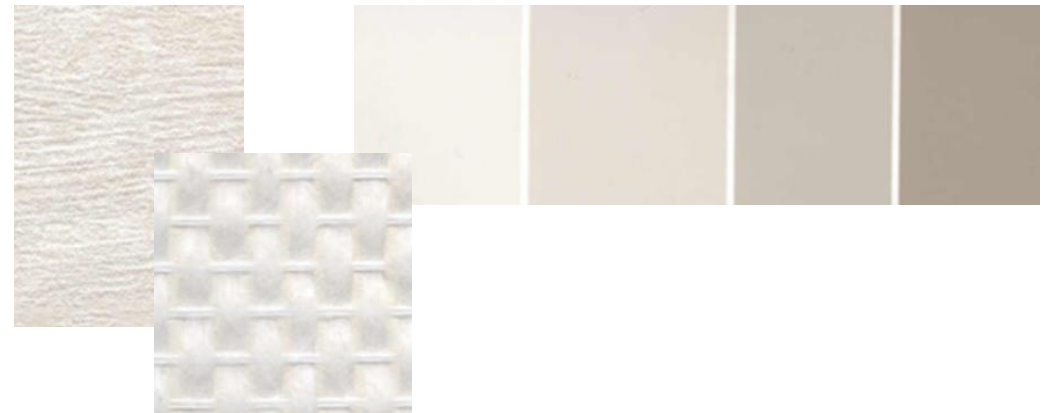
People must use their discretion whether it should be the same colour as the walls or as the blue of the upholstery. (Small venues look bigger when there is no contrast on the walls.)

Blinds and curtains in front of windows: Blinds must be in a blue that matches the curtains and the upholstery material or in the same colour as the wallpaper or the wall paint.

Curtains

Curtains must match the upholstery material. (Blue or the Eskom gold or a combination of the two, but it must match the upholstery material.)

Wallpaper and paint samples



Carpets

Nexus: Berber Point – colour Jute or Raffia with a bitumen backing OR

Any commercial or industrial duty carpet in the same colour as this Jute or Raffia colour OR

Nexus: Berber Point – a plain blue colour that will complement the upholstery material (with a bitumen backing) OR

Any commercial or industrial duty carpet in a plain blue colour or a plain gold colour that will complement the upholstery material. (Carpet must not show marks easily.)

Carpet samples



Tiles

Must be something between grey and beige, but not grey only and also not beige only.

Supplier: Any tile supplier

- Criteria:**
- Must be a commercial tile (if possible) or a tile that will carry heavy traffic
 - Not slippery
 - Should not show dirt easily
 - No varnish finishes on tiles

Must complement the rest of the colour palette for Eskom interiors (something between grey and beige, but not grey only and also not beige only).

Always buy extra tiles to be able to replace broken tiles at a later stage.

Polyflor

Polyflor: or similar material which looks like wood, but it is stuck to the floor. It is small panels/strips of "wood". The colour should be light maple and must be confirmed by Willem Steyn at MWP.

Tile samples



Furniture finishes

Furniture finishes to be light maple. (No black edges on desks, but edges (beading) must match light maple colour.)

Filing cabinet may have a black door.

Surface of reception desk

Light maple or Formica – Sierra Granite (Top Face) 534 – or granite.

Specifications for powder coating of desk/ table legs, cabinet and credenza handles, etc.

AkzoNobel. Range: Interpon 600 Matt, ANP 9054, Cowrie Gold

Chairs

Chairs must be upholstered in Eskom material and it must have black arm rests or light maple arm rests. The legs of the chairs must be in light maple or in black.

Furniture



Reception desk



Credenza



Desk accessories, pot plant holders, dust bins, frames for office screen, door frames and frames for posters/awards, wall clocks

Desk accessories, dust bins, frames for office screens/doors: Cowrie Gold or maple colour finishes.

Pot plant holders

The Eskom metallic gold (Pantone 8004C).

Frames for posters/awards/paintings, wall clocks, etc.

Refrain from using very heavy and wide frames. Rather opt for lighter and narrower frames. Ensure that the colour of the frame matches the Eskom Pantone swatch 8004 (Eskom gold) as closely as possible. Note that this pantone is not yellow gold and neither is it an aluminium colour. Frames and wall clocks may also be in a light maple colour.

Frames can be ordered from any supplier.

Specifications for powder-coating

AkzoNobel. Range: Interpon 600 Matt, ANP 9054, CowrieGold



Exterior Finishes

No colour specifications have been set for the outside of buildings, but it is recommended that the buildings be painted one of the following colours: white/light cream/light grey/Plascon E14-2/Plascon E14-3. New references: (Plascon) Inspired Y2-D2-2 (Stone Wash), Y2-D2-1 (Waxen Tint).

The roofs should be painted in a dark charcoal or brown and the fascias should be the same colour as the outside walls.

If unsure about any interior applications (excluding the furniture ordering or specifications), please call your Communication Manager or send your enquiries to Head Office at corporateidentity@eskom.co.za.

