

 Eskom National Transmission Company South Africa TM	Scope of Work	NTCSA
---	----------------------	--------------

Title: **Scope of Work for the Procurement of Servitude Gates in Central Grid** Document Identifier: **N/A**

Alternative Reference Number: **N/A**

Area of Applicability: **National Transmission Company South Africa SOC Ltd**


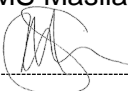
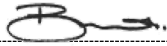
Functional Area: **Engineering**

Revision: **0**

Total Pages: **11**

Next Review Date: **N/A**

Disclosure Classification: **Controlled Disclosure**

Compiled by	Functional Responsibility	Authorized by
Z Zwane 	MS Masilana 	M Nyalunga 
Initials and Surname Technical Support	Initials and Surname Senior Advisor	Initials and Surname Middle Manager L&S
Date: 23/08/2024	Date: 23/08/2024	Date: 26/08/2024

Content

Page

1. Introduction.....	3
2. Supporting Clauses	3
2.1 Scope.....	3
2.1.1 Purpose.....	3
2.1.2 Applicability	3
2.1.3 Effective date.....	3
2.2 Normative/Informative References	3
2.2.1 Normative.....	3
2.2.2 Informative.....	3
2.3 Definitions	4
2.3.1 Contractor	4
2.3.2 Landowner	4
2.3.3 Visitor	4
2.4 Abbreviations	4
2.5 Roles and Responsibilities	4
2.5.1 Lines & Servitudes Manager.....	4
2.5.2 Senior Advisor	4
2.5.3 Technical Support.....	4
2.5.4 Senior Supervisor.....	4
2.6 Process for Monitoring.....	4
2.7 Related/Supporting Documents.....	5
3. Access Gates to Powerlines and Servitudes.....	5
3.1 Scope of Work.....	5
4. Acceptance.....	5
5. Revisions.....	6
6. Development Team	6
7. Acknowledgements	6
Appendix A – Servitudes Gates Specification Sheets and Drawings.....	7

Tables

Table 1: Servitudes Gates to be supplied.....	5
---	---

CONTROLLED DISCLOSURE

1. Introduction

The Fencing Act (Act 63 of 1963) regulates matters regarding fences between properties. Fences are used by the landowner to control the movement of animals, people, as well as to safeguard the property. National Transmission Company South Africa personnel and its contractors use servitude gates to gain access to the powerlines and servitudes for repairs, maintenance and inspection.

At all points where a powerline crosses a fence line and where no suitable gate exists, an applicable gate shall be installed (Refer to TRMSCAAC1). During construction, gates with sufficient width are required to permit access to all terrain vehicles. These gates are galvanised to provide similar life expectancies to the galvanised overhead line towers.

2. Supporting Clauses

2.1 Scope

2.1.1 Purpose

The purpose of this document is to outline the requirements for the servitude gates to be procured.

2.1.2 Applicability

This document shall apply in the National Transmission Company South Africa SOC Ltd, Reg No 2021/539129/30, within Central Grid.

2.1.3 Effective date

Effective from the date it is authorised.

2.2 Normative/Informative References

Parties using this document shall apply the most recent edition of the documents listed in the following paragraphs.

2.2.1 Normative

- [1] ISO 9001 Quality Management Systems
- [2] 240-80605256 - Access to Private Property (Includes Strategy on Accessing Game Reserves/Farms/Small Holdings)
- [3] Transmission line towers and line construction- TRMSCAAC1

2.2.2 Informative

- [4] Fencing Act (Act 63 of 1963)

CONTROLLED DISCLOSURE

2.3 Definitions

2.3.1 Contractor

Any company or person that performs work for or on behalf of National Transmission Company of South Africa on the powerline and servitudes.

2.3.2 Landowner

A landowner is defined for the purposes of this document as the owner of the land, registered as such in the Deeds Office, his/her assignee, representative or the legal occupier, manager, or lessee of the land.

2.3.3 Visitor

A National Transmission Company of South Africa employee or contractor.

2.4 Abbreviations

Abbreviation	Explanation
NTCSA	National Transmission Company of South Africa

2.5 Roles and Responsibilities

2.5.1 Lines & Servitudes Manager

The Lines & Servitudes Manager shall ensure that the gates to be procured are budgeted for and to make that budget and resources available.

2.5.2 Senior Advisor

The senior advisor shall provide the specifications and drawings for the servitude gates to be procured.

2.5.3 Technical Support

The technical support shall compile the scope of work document which is to be used to procure the servitude gates.

2.5.4 Senior Supervisor

The Senior Supervisor shall ensure that the Servitudes Gates and Access Maintenance is done to identify damaged/broken gates that need to be replaced.

2.6 Process for Monitoring

N/A

CONTROLLED DISCLOSURE

2.7 Related/Supporting Documents

N/A

3. Access Gates to Powerlines and Servitudes

Access to land on which NTCSA has servitudes and electrical infrastructure is critical to build, inspect, repair and or maintain equipment to ensure continuity of electricity supply. Though NTCSA obtained rights to enter properties through a right of way (Wayleave) or a registered servitude, NTCSA must comply with certain legal obligations whilst exercising these rights. Security on such property is regarded as vital to landowners. Although NTCSA has a right to enter private property to maintain and/or repair equipment, and ensure continuity of electricity supply, NTCSA employees and its contractors are required to respect the landowner and always comply with legislation.

3.1 Scope of Work

For NTCSA to comply with the relevant legislations which govern access to private property in which the powerlines transverse, access gates are required which are in good working condition. Thus, there is a need for Central Grid to procure access gates which will be installed to gain access to the powerlines and servitudes that are in private property. The required scope of work is as follows:

Supply of galvanised servitude gates as indicated on Table 1: Servitudes Gates to be supplied. Servitude gates should be designed according to the specifications and drawings in Appendix A: Servitudes Gates Specification Sheets and Drawings for the **4m** Galvanised steel gate.

Table 1: Servitudes Gates to be supplied

STG No.	Type of Gate	Quantity	Rate
0226260	GATE,SERVITUDE 4m GALV. ST. D2504	50	

4. Acceptance

This document has been seen and accepted by:

Name	Designation
Patrick Thwala	Snr Supervisor Tech Lines
Edwin Mafolo	Snr Supervisor Tech Lines
Abduraghman Hassen	Snr Advisor Lines & Servitudes
Rethabile Mzizi	Engineer
Koketso Molekwa	Snr Supervisor Tech Lines
Collin Sibeko	Snr Supervisor Tech Lines
Nathan Molapo	Snr Supervisor
Heavyman Kobani	Contracts Manager
Biko Dzhalagome	Compliance Manager

CONTROLLED DISCLOSURE

Name	Designation
Ronald Chauke	Quantity Surveyor

5. Revisions

Date	Rev.	Compiler	Remarks
August 2024	0	Z Zwane	Compilation of Scope

6. Development Team

The following people were involved in the development of this document:

- Zandile Zwane
- Mac Masilana
- Nokuthula Mthiyane


7. Acknowledgements

N/A

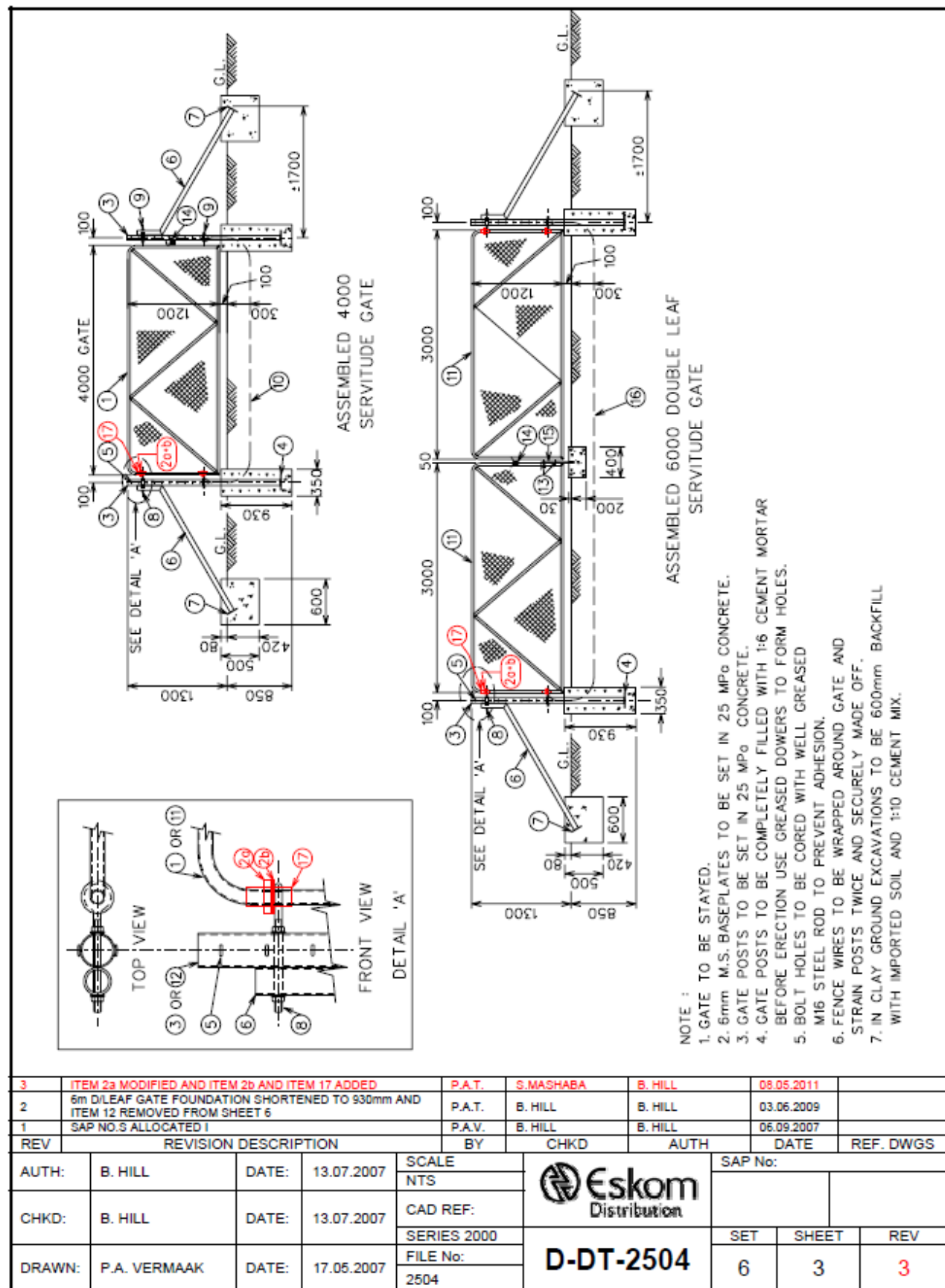
CONTROLLED DISCLOSURE

When downloaded from the document management system, this document is uncontrolled and the responsibility rests with the user to ensure it is in line with the authorized version on the system. No part of this document may be reproduced in any manner or form by third parties without the written consent of National Transmission Company South Africa SOC Ltd Reg No 2021/539129/30

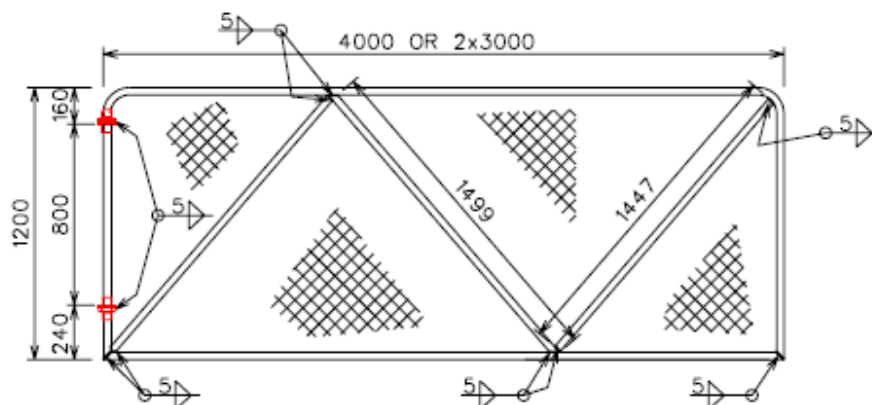
Appendix A – Servitudes Gates Specification Sheets and Drawings

SPEC SHEET										
SAP MATERIAL No.:		0226260								
SHORT DESCRIPTION:		GATE, SERVITUDE 4m GALV. ST. D2504								
<p>TECH. DESCRIPTION:</p> <p>** NON-STOCK ITEM **</p> <p>SERVITUDE GATE FOR POWER LINES *</p> <p>ALL ITEM GRADE S355JR/350WA STEEL * HOT DIPPED GALVANISED*</p> <p>CONSISTING OF :</p> <p>ITEM 1 - 4000 GATE</p> <p>ø 32 x 2.5 WALL THICKNESS HOLLOW TUBING.</p> <p>WITH 50 x 2.6 DIAMOND WIRE MESH TO BE SPIRALLY WIRED TO FRAME AND BRACES WITH 2.6mm GALV. BINDING WIRE.</p> <p>ITEM 2a - COLLAR ø 70 x 16 THICK SOLID ROUND STEEL.</p> <p>(2 OFF) PER GATE WELDED TO GATE.</p> <p>ITEM 2b - WASHER ø 70 x 6 THICK STEEL WASHER.</p> <p>(2 OFF) PER GATE DO NOT WELDED TO GATE.</p> <p>ITEM 3 - GATE POST ø 76 x 3 WALL THICKNESS x 2000 HOLLOW TUBING (2 OFF) PER GATE.</p> <p>ITEM 4 - FOOT PLATE 150 x 6 THICK FLAT STEEL PLATE (1 OFF) PER GATE POST (=2 PER GATE).</p> <p>ITEM 5 - MAKE OFFS 22 x ø 6 SOLID ROUND STEEL (22 OFF PER GATE POST) (=44 PER GATE).</p> <p>(NOTE : FENCE WIRES TO BE WRAPPED AROUND GATE AND STRAIN POSTS TWICE AND SECURELY MADE OFF).</p> <p>ITEM 6 - POST STRUT ø 60 x 3.5 WALL THICKNESS x 2150 LONG HOLLOW TUBING (2 OFF PER GATE).</p> <p>ITEM 7 - FOOT PLATE 200 x 6 THICK FLAT STEEL PLATE (1 OFF) PER GATE POST (=2 PER GATE).</p> <p>ITEM 8 - M16 x 200 THREAD LENGTH (ONLY) EYE BOLT (3 OFF PER GATE).</p> <p>ITEM 9 - M16 x 120 LONG SET SCREW COMPLETE WITH 1 x M16 FLAT WASHER AND 1 x M16 SPRING WASHER (1 OFF PER GATE).</p> <p>ITEM 10 - EARTH STRAP 40 x 3 x 4700 LONG MS GALVANISED, CONNECTED TO GATE POST (ITEM 3) WITH EYE BOLT (ITEM 8) AND SET SCREW (ITEM 9).</p> <p>ITEM 14 - 600 LENGTH OF 8 LONG LINK STEEL CHAIN WITH 50 DIA. x 8 RINGS WELDED ON ENDS & ONE PADLOCK (1 OFF PER GATE). *</p> <p>WELD TO BE 5mm CONTINUOUS SEAL AND TO CONFORM TO SANS 10162-1 AND</p> <p>ITEM 17 – STIFFNER 100 x 39 x 3 THICK STEEL PLATE (2 OFF) WRAPPED AROUND GATE FRAME *</p> <p>TOLERANCES ON DIMENSIONS ± 2mm AND ON DRILLING CENTRES ± 1mm *</p> <p>ESKOM DRAWING No. D-DT-2504 *</p>										
ITEM		:- GATE, SERVITUDE 4m GALV. ST.								
MATERIAL SPECIFICATION		:- EN10025-2 / SANS 1431								
CORROSION SPECIFICATION		:- SANS 121								
STANDARD SPECIFICATION		:- SANS 10162,								
ESKOM SPECIFICATION		:- D-DT-2504								
TEST & CERTIFICATION REQUIREMENTS		:- TYPE TEST ACCORDING TO DSP 34-2051								
INSPECTION		Yes	No	ESKOM RELEASE NOTE				Yes	No	
IDENTIFICATION:- INDELIBLE MANUFACTURES TRADEMARK & PART No. ON ALL ITEMS										
3	ITEM 2a MODIFIED AND ITEM 2b AND ITEM 17 ADDED			P.A.T.	S.MASHABA	B. HILL	08.05.2011			
2	6m D/LEAF GATE FOUNDATION SHORTENED TO 930mm AND ITEM 12 REMOVED FROM SHEET 6			P.A.T.	B. HILL	B. HILL	03.06.2009			
1	SAP NO.S ALLOCATED I			P.A.V.	B. HILL	B. HILL	06.09.2007			
REV	REVISION DESCRIPTION			BY	CHKD	AUTH	DATE	REF. DWGS		
AUTH:	B. HILL	DATE:	13.07.2007	SCALE NTS				SAP No:		
CHKD:	B. HILL	DATE:	13.07.2007	CAD REF:				0226260		
				SERIES 2000						
DRAWN:	P.A. VERMAAK	DATE:	17.05.2007	FILE No: 2504		D-DT-2504		SET 6	SHEET 1	REV 3

CONTROLLED DISCLOSURE



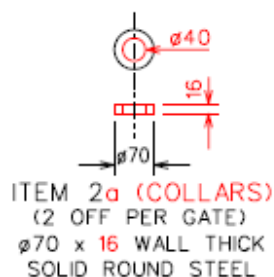
CONTROLLED DISCLOSURE



MATERIAL :

1. FRAME AND BRACINGS $\phi 32 \times 2.5$ WALL THICKNESS HOLLOW TUBING.
2. 50 x 2.6 DIAMOND WIRE MESH, TO BE SPIRALLY WIRED TO FRAME AND BRACES WITH 2.6mm GALV. BINDING WIRE

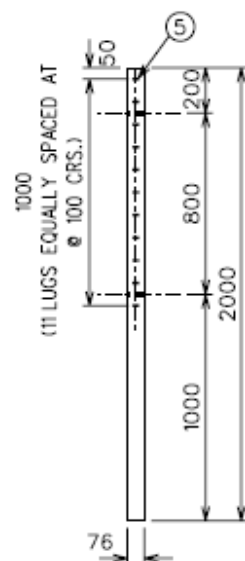
ITEM 1 OR ITEM 11
(4000 OR 2 x 3000 GATES)
 $\phi 32 \times 2.5$ WALL THICKNESS HOLLOW TUBING



NOTE :
WELDED TO ITEM 1.

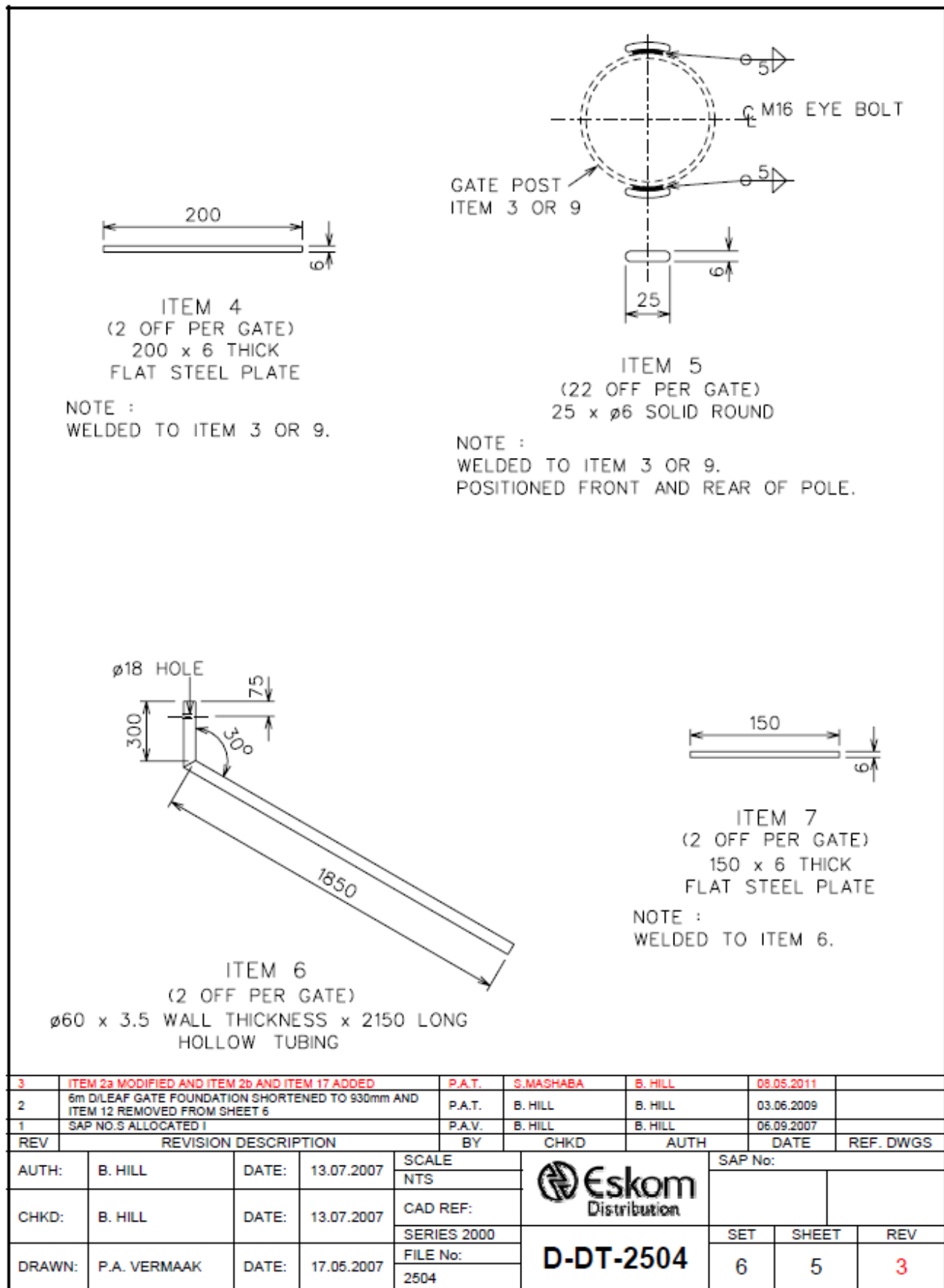


NOTE :
DO NOT WELD TO ITEM 1.

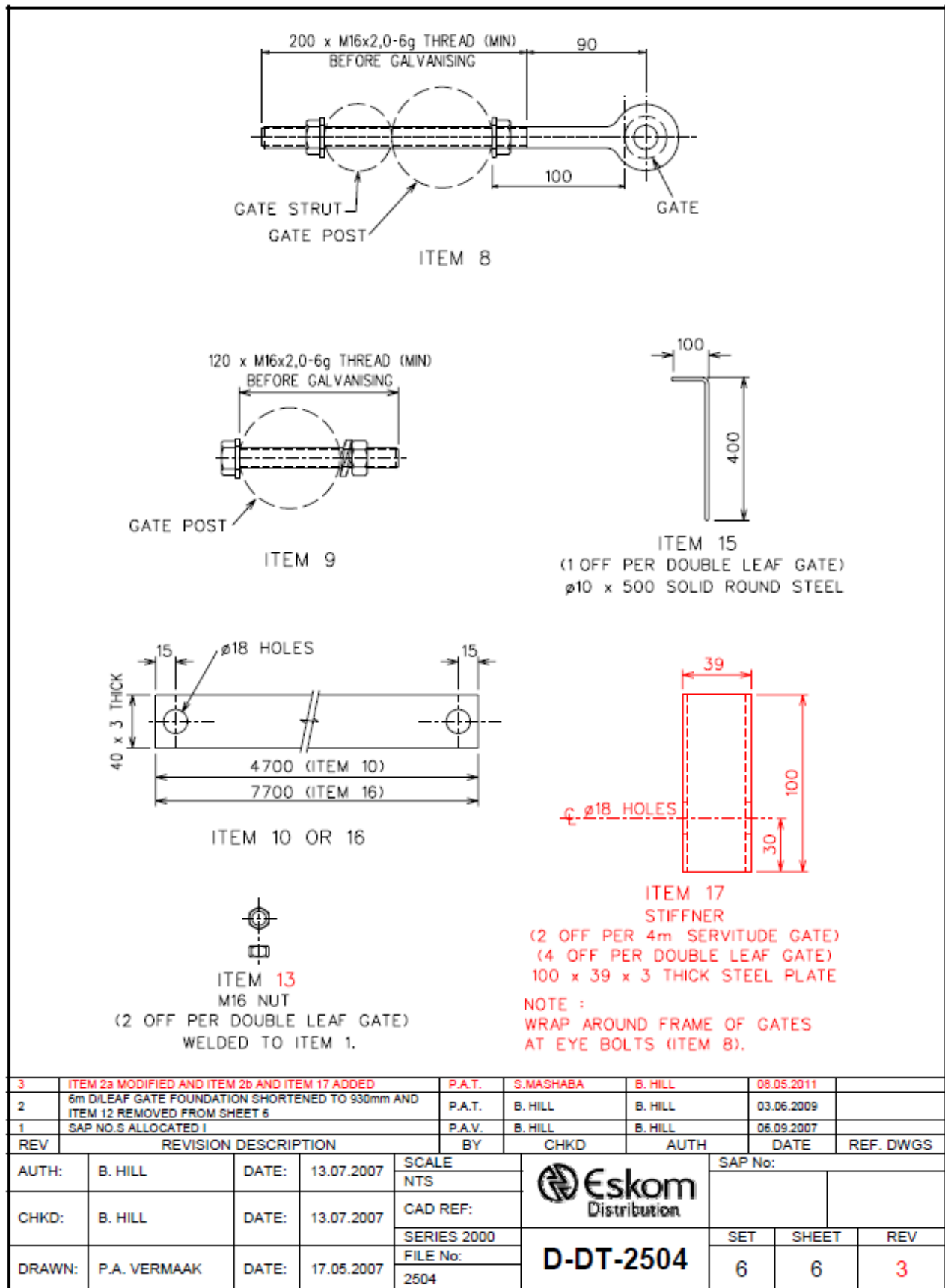


3	ITEM 2a MODIFIED AND ITEM 2b AND ITEM 17 ADDED	P.A.T.	S.MASHABA	B. HILL	08.05.2011	
2	6m D/LEAF GATE FOUNDATION SHORTENED TO 930mm AND ITEM 12 REMOVED FROM SHEET 6	P.A.T.	B. HILL	B. HILL	03.06.2009	
1	SAP NO.S ALLOCATED	P.A.V.	B. HILL	B. HILL	06.09.2007	
REV	REVISION DESCRIPTION	BY	CHKD	AUTH	DATE	REF. DWGS
AUTH:	B. HILL	DATE:	13.07.2007	SCALE	SAP No:	
CHKD:	B. HILL	DATE:	13.07.2007	CAD REF:		
DRAWN:	P.A. VERMAAK	DATE:	17.05.2007	SERIES 2000	SET	SHEET
				FILE No:	6	4
				2504		REV
						3

CONTROLLED DISCLOSURE



CONTROLLED DISCLOSURE



CONTROLLED DISCLOSURE