



DRIEHOOK SIGNAL CABIN

REFURBLISHMENT

SECTION A

SCHEDULE OF QUANTITIES

TABLE OF CONTENT

Contents	Page no
Annexure A Civil and Minor works BoQ.....	3 to 18
Annexure C Final Summary.....	19

PART A: SCHEDULE OF QUANTITIES

DRIEHOOK SIGNAL CABIN

	<u>BILL NO. 1</u>	<u>Unit</u>	<u>QTY</u>	<u>Rate</u>		<u>Amount</u>
	<u>ALTERATIONS (PROVISIONAL)</u>					
	<u>REMOVAL OF EXISTING WORK</u>					
	Taking out and removing piping, sanitary fittings, etc including disconnection piping from fittings					
1	Pan and cistern	No.	5	R	-	R -
2	Kitchen sink cabinet	No.	3	R	-	R -
3	Ceramic wash hand basin	No.	5	R	-	R -
4	0.25 x 0.2m high box gutter including down pipes	m	80	R	-	R -
5	50mm uPVC piping including fittings and brackets	m	5	R	-	R -
	Taking out and removing doors including ironmongery and steel frame from walls					
6	Timber single door and frame 813x2032mm high	No.		R	-	R -
	Taking out and removing doors					
7	Single door 813 x 2032mm high from steel frame	No.	10	R	-	R -
	Taking up and removing floor covering					
8	Vinyl tile/ceramic floor covering/mosaic floor tile/skirting including preparing screed to receive new floor tiling	m ²	150	R	-	R -
	Hacking up/off and removing ceramic wall tile					
9	Tiles to walls	m ²	25	R	-	R -
	Taking down and removing ceiling					
10	Rhino board ceilings including cornices, brandering, jointing strips, etc	m ²	30	R	-	R -

	Taking out and removing glass from steel window frame					
11	clear glass from steel window frames including cleaning out rebates and preparing for new glass	m ²	15	R	-	R -
	Taking out and removing Fascia and barge board					
12	Fascia and barge board not exceeding 300mm girth	m	60	R	-	R -
	Clean down existing face brick façade, painted walls, etc with water and brush					
13	External face brick walls	m ²	250	R	-	R -
						R -
	<u>BILL NO 2</u>	<u>Unit</u>	<u>QTY</u>	<u>Rate</u>	<u>Amount</u>	
	<u>CARPENTRY AND JOINERY</u>					
	<u>DOORS</u>					
	44mm thick interior grade flush solid core timber single door with 3 mm thick commercial ply on both sides with consolidated edges fitted and complying with SABS 545 in pressed steel frame. All painted in accordance with architects colour schedule.					
1	813 x 2032 x 44mm single interior leaf solid core	No.	18	R	-	R -
	44mm thick exterior grade flush solid core timber single door with 3mm thick commercial ply on both sides with consolidated edges fitted and complying with SABS 545 in pressed steel frame. All painted in accordance with architect's colour schedules					
2	813 x 2032 x 44mm single exterior leaf solid core	No.	8	R	-	R -
	<u>FITTINGS</u>					
	<u>The following in modular timber cupboards, counters, duty stations, desk etc. as per Cupboard Connections Specification</u>					

Carcasses of 16mm thick particle board with both faces white melamine with white Masonite backs. Shelving of 16mm particle board, both faces white melamine and front edge in white PVC. Doors of 16mm particle board with post formed vertical edges and laminated in Renolit. Tops of 32mm particle board with post formed leading edges and laminated in high pressure decorative laminate. All butt edges and edges against walls to be sealed with silicon sealant. Hinges to be “Hettich”. Drawer runners to be metal 500mm series with nylon runners or similar. All units complete with door, handles, hinges, cupboards, door, locks, barrel bolts and shelves. Floor unit complete with kick plates. (Formica tops measured elsewhere)

Built in cupboards fittings

3	Kitchen sink floor cupboard 3000 x 600 x 900mm high with sides, bottom, back, 3 hinged doors and one drawer completely working including handles, etc. top and sink measured else where	No.	3	R	-	R	-
---	---	-----	---	---	---	---	---

Grocery cabinet

4	2.1m high x 0.5m wide x 0.6m 3 lockable separated parking compartment including locks and handles	No.	3	R	-	R	-
---	---	-----	---	---	---	---	---

Change room cabinet

Locker to combines steel body with supawood beech veneer doors. Locker body to be epoxy coated and oven baked for superior finish with grey colour Standard body.

5	1800mm high x 450mm width x 500mm depth 2 door lockable lockers completely with heavy duty hinges and locks	No.	15	R	-	R	-
---	---	-----	----	---	---	---	---

Single sided Locker bench unit

Manufactured in angle iron (40x40x5mm), square (50x50x1.2mm or round tubing (50x1.2mm) heavy duty galvanized powder coated steel frame, with 6x70mm wide x 32mm thick Meranti slats, Electroplating powder coating legs and Adjustable feet and base plates

6	400mm high x 1000mm width x 1500mm long single sided locker bench unit	No.	4	R	-	R	-
---	--	-----	---	---	---	---	---

COUNTERTOP

	Wrought hardwood to cupboards, etc						
7	19 x 70mm cleats	m	25	R	-	R	-
8	19 x 50mm cleats fixed for worktop support	m	25	R	-	R	-
	Interior type particle board with Formica veneer						
	900 x30mm thick granite with all exposed edges large bevel edged, fixed to supports using dabs of 100% black silicone adhesive along all supports with all joints filled with matching polyester resin glue. Granite surface to be sealed using an approved stone sealer, all in accordance with the manufacturer's recommendations.	No	3	R	-	R	-
10	2mm thick edge strip 32mm wide	m	25	R	-	R	-
11	Cut 50mm work top to fit end bowl sink, measured else where	No.	3	R	-	R	-
	Nutec fibre cement						
12	3000 x 10 x 300mm fascia boards including PVC H-Profile fascia board joiner	m	60	R	-	R	-
13	3000 x 10 x 300mm barge boards including PVC H-Profile barge board joiner	m	30	R	-	R	-
	Skirting						
14	20 x 120mm solid meranti skirting	m	200	R	-	R	-
						R	-
	<u>BILL NO 3</u>	<u>Unit</u>	<u>QTY</u>	<u>Rate</u>		<u>Amount</u>	
	<u>CEILING WORK</u>						
	<u>SUPPLEMENTARY PREAMBLES</u>						
	<u>Description</u>						
	Items described as “nailed” shall be deemed to be fixed with hardened steel nails or pins or shot pinned to brickwork or concrete						
	Items described as “plugged” shall be deemed to include screwing to fibre, plastic or metal plugs at not exceeding						

	600mm centres, and where described as “bolted”, bolts priced elsewhere					
	6.4mm “Rhino” gypsum plaster board with H-Type pressed steel jointing strips					
1	Ceiling including 38 x 38mm sawn softwood brandering at 450mm centres	m ²	200	R	-	R -
2	Extra over ceiling for 800 x 800mm trap door of 38 50mm wrought softwood rebated framing with one 38 x 38mm sawn softwood cross brander covered with ceiling board and fitted flush in opening	No.	5	R	-	R -
	“Rhino” gypsum plasterboard cornice					
3	75mm coved cornices	m ²	200	R	-	R -
						R -
	<u>BILL NO 4</u>	<u>Unit</u>	<u>QTY</u>	<u>Rate</u>		<u>Amount</u>
	<u>IRONMONGERY</u>					
	<u>LOCKS</u>					
1	3 liver union lock with handles	No.	8	R	-	R -
2	Ultra-security heavy duty locks	No.	2	R	-	R -
3	Stainless Steel Toilet Cubicle Indicator bolt & lock set, Grade 304Stainless Steel indicator bolt fixed to surface with matching stainless-steel screws.	No.	5	R	-	R -
4	Satin stainless steel toilet roll holders for 2 rolls with central shaft system and cylinder lock, plugged and screwed to the wall with stainless steel screws. (vandal resistant)	No	5	R	-	R -
	<u>SIGNAGE</u>					
	<u>External signage</u>					
5	500 x 150mm High double-sided ceiling mounted directional sign anodized aluminium female and male ablutions pictogram door sign, suspended from ceiling grids with brass chains. Minimum of 2,1m above finished floor level.	No.	6	R	-	R -

							R	-
	<u>BILL NO 5</u> <u>TILING</u> <u>Prices:</u> Prices are to include for all square cutting and waste, cleaning off on completion and protection from injury. Areas are measured net to face of brickwork and concrete. Any additional area caused by the thickness of tiling and screed are to be allowed for in prices <u>FLOOR TILING</u> 600x600mm Full Bodied polished Porcelain tiles with 3mm grouting lines 1 On floors 300x300x6mm Full Bodied polished Porcelain mosaic tiles with 3mm grouting lines 2 On floors <u>WALL TILING</u> Matt Full Bodied Porcelain tiles, size 600 x 300mm x 12mm fixed to internal wall plaster backing with TAL tile adhesive mixed with TAL bonding liquid in lieu of water with joints continuous in both directions and grouted with TAL tile grout, excess grout on the surface to be cleaned with water as work proceeds. 3 On walls 300x300x6mm Full Bodied polished Porcelain mosaic tiles with 3mm grouting lines 4 On walls	<u>Unit</u>	<u>QTY</u>	<u>Rate</u>		<u>Amount</u>		
		m ²	200	R	-	R	-	
		m ²	15	R	-	R	-	
		m ²	60	R	-	R	-	
		m ²	20	R	-	R	-	
							R	-

	<u>BILL NO 6</u>	<u>Unit</u>	<u>QTY</u>	<u>Rate</u>		<u>Amount</u>
	<u>PLUMBING WORK</u>					
	<u>SANITARY FITTINGS</u>					
1	Vaal Sanitary ware Hibiscus vitreous china close coupled suite colour White, comprising 90° outlet open rim pan with matching 9 litre front single flush cistern including lid and fitments and Jazz Thermoset seat.	No.	5	R	-	R -
2	Vaal Sanitary ware Hibiscus vitreous china lavatory basin colour White, size 510 x 405mm with two tap hole including integrated overflow and chain stay hole bolted to wall with two x 10mm bolts and including Classic floor mounted pedestal and sealed with silicone sealant where basin meets wall.	No.	5	R	-	R -
3	Top entry ceramic urinal basin with Junior flush master exposed chrome flush valve including flush pipe, spreader, etc	No.	2	R	-	R -
	WASTE UNINON ETC					
4	Bath and Basin waste, plug, chain, stay and backnut	No.	0	R	-	R -
	TRAPS ETC					
5	365/40 CP bottle trap 40 x 40 INC CP/PVC adaptor to 40mm	No.	6	R	-	R -
6	38mm sink “P” trap	No.	5	R	-	R -
7	Brass shower P trap with square ss grating	No.	5	R	-	R -
	SINK, BASIN, ETC					
8	90Mm Bsw 1200x500x180mm double bowl Kitchen stainless steel sink	No.	3	R	-	R -
	TAPS, VALVES, ETC					
9	Kitchen sink Mixer taps	No.	3	R	-	R -
10	Push button pillar tap for hot and cold water	No.	10	R	-	R -
11	Flexi connector	No.	10	R	-	R -
12	15 Mini Ball Valve	No.	10	R	-	R -

13	22mm Brass Gate Valve	No.	5	R	-	R	-
14	Relieve/safety valve	No.	6	R	-	R	-
15	Vacuum breaker	No.	6	R	-	R	-
16	Drain cock	No.	3	R	-	R	-
0.8mm galvanized sheet iron							
17	125 x 100mm eaves gutter	m	50	R	-	R	-
18	Extra over 125 x 100mm eaves gutter for stopped end	No.	10	R	-	R	-
19	Extra over 125 x 100 eaves gutter for angle	No.	10	R	-	R	-
20	Extra over 125 x 100mm eaves gutter for outlet for 100 x 75mm pipe	No.	10	R	-	R	-
21	100 x 75mm rainwater pipes	m	30	R	-	R	-
22	Extra over 100 x 75mm rainwater pipe for shoe	No.	10	R	-	R	-
0.9mm galvanized sheet iron							
23	250 x 200mm industrial eaves gutter including heavy duty brackets fixed at 500mm centers	m	40	R	-	R	-
24	Extra over 250 x 200mm eaves gutter for stopped end	No.	6	R	-	R	-
25	Extra over 250 x 200 eaves gutter for angle	No.	6	R	-	R	-
26	Extra over 125 x 100mm eaves gutter for outlet for 300mm pipe	No.	6	R	-	R	-
27	300mm rainwater pipes	m	30	R	-	R	-
28	Extra over 300mm rainwater pipe for shoe	No.	6	R	-	R	-
Extra over PVC pipes for fittings							
29	110mm pan connector	No.	10	R	-	R	-
WATER SUPPLIERS							
Class “O” copper pipe							
30	15mm pipes chased into brick walls	m	50	R	-	R	-

31	22mm pipes	m	30	R	-	R	-
32	22mm pipes chased into brick walls and make good	m	50	R	-	R	-
	Extra over class "O" copper pipes for capillary fittings						
33	15mm fitting	No.	15	R	-	R	-
34	15mm Tee	No.	15	R	-	R	-
35	15mm bend	No.	5	R	-	R	-
36	22mm fitting	No.	20	R	-	R	-
37	22mm Tee	No.	15	R	-	R	-
38	22mm bend	No.	5	R	-	R	-
	SOIL DRAINAGE						
	Upvc waste pipes						
39	50mm pipes with all connection and make good	m	30	R	-	R	-
	Upvc class 34 pipes including excavation, bedding, backfilling and compaction and disposal of surplus material						
40	110mm pipes vertical or ramped to cleaning eyes etc (no excavation)	m	10	R	-	R	-
41	110mm pipes laid in and including trenches not exceeding 1m deep	m	50	R	-	R	-
42	50mm pipes with all connection and make good	m	5	R	-	R	-
							R -
	<u>BILL NO. 7</u>	<u>Unit</u>	<u>QTY</u>	<u>Rate</u>		<u>Amount</u>	
	<u>GLAZING</u>						
	<u>GLAZING TO ALUMINIUM WITH CLIP ON BEADS</u>						
	4mm patterned glass						

1	Panes exceeding 0.1m ² and 0.5 m ² 4mm clear float glass	m ²	15	R	-	R	-
2	Panes exceeding 0.1m ² and 0.5 m ² <u>MIRROR</u> 6.5mm silvered float glass copper backed mirrors with polished adges holed for and fixed with chromium plated dome capped mirror screws with rubber buffers to plugs in brickwork	m ²	15	R	-	R	-
3	Mirror 600 x 1200mm high with four screws	No.	5	R	-	R	-
						R	-
	<u>BILL NO.8</u>	<u>Unit</u>	<u>QTY</u>		<u>Rate</u>		<u>Amount</u>
	<u>METAL WORK</u>						
	<u>PRESSED STEEL DOOR FRAMES, LOUVRE GRILLE FRAMES, ETC</u>						
	SECURITY GATES						
	Supply and install Burglar door						
1	815 x 2100mm high Heavy duty Burglar door and frame with 16mm steel round bar and 40 x 40 x 2.5mm square tubing as per attached drawing for single door	No.	8	R	-	R	-
	Supply and install Burglar windows						
2	600mm W x 600mm H Box windows guard constructed with 5mm of expanded metal and 50 x 50 x 6mm equal angles.	No.	8	R	-	R	-
3	1500mm W x 900mm H Box windows guard constructed with 5mm of expanded metal and 50 x 50 x 6mm equal angles.	No.	18	R	-	R	-

	<u>FENCING AND GATES</u> <p>Constructed of galvanized steel sections, palisade fence with an 2400mm min height. The materials, construction and installation procedure for steel palisade fences to be in accordance with SANS 30112:2004 " South African National Standard for fence part 12 specifications for steel Palisade fences". Reference to applicable SANS specifications for full details.</p>					
4	Fit round bob wire 900mm long steel heavy duty flat cube, including all necessary fittings to the perfect completion of the work.	m	200	R	-	R -
5	2400mm high galvanized steel palisade fencing and post at 3m centers	No	200	R	-	R -
6	2400mm high x 4000mm long galvanized steel palisade gate and post at 3m centers, build in with lockable pedestrian gate. 1200 mm long.	No	1	R	-	R -
7	allow to fully upgrade steel sheet building, all measurements to be verified on site, works to include, roof, floor, paint, doors and windows. And make good.		Sum	R	-	R -
						R -
	<u>BILL NO.9</u> <u>PAINTWORK</u> <p>For preambles see “Model Preambles for Trades” 2008 edition published by the Association of South African Quantity Surveyors</p> <p>SUPPLEMENTARY PREAMBLES</p> <p>Previously painted plastered surfaces</p> <p>Surfaces shall be thoroughly washed down and allowed to dry completely before any paint is applied. Blistered or peeling paint shall be completely removed and cracks shall be opened, filled with a suitable filler and finished smooth</p> <p>Previously painted metal surfaces</p>	<u>Unit</u>	<u>QTY</u>	<u>Rate</u>		<u>Amount</u>

Surfaces shall be thoroughly rubbed and cleaned down. Blistered or peeling paint shall be completely removed down to bare metal

Previously painted wood surfaces

Surfaces shall be thoroughly cleaned down. Blistered or peeling paint shall be completely removed and cracks and crevices shall be primed, filled with a suitable filler and finished smooth

PAINTWORK, ETC TO NEW WORK

ON FLOATED PLASTER

One coat professional plaster primer and two coats acrylic paint

1	On plastered walls	m ²	480	R	-	R	-
---	--------------------	----------------	-----	---	---	---	---

One coat professional plaster primer and two coats contractors White Gloss Enamel

2	On gutters and downpipes	m ²	280	R	-	R	-
---	--------------------------	----------------	-----	---	---	---	---

3	On fascia and barge boards	m ²	250	R	-	R	-
---	----------------------------	----------------	-----	---	---	---	---

One coat professional plaster primer and two coats contractors Brick and Slasto Dressing/Brick seal

ON WOOD

One coat wood primer, one Universal Undercoat and two coats PRASA Brown

4	On Doors	No	76	R	-	R	-
---	----------	----	----	---	---	---	---

Sand with abrasive paper, leaving surface dry, clean and dust free. Wash knots and resinous areas with Lacquer Thinners (ILS 1) and coat with Woodcare Knot Seal (PK 2) and apply one coat of Dulux or Plascon Woodcare Pretreatment (WWP 1), overcoated within 48 hours with a moisture content of BD 2 scale

	(A1-A5) < 14% or less. Prime with one coat Varnish with an overcoating time of 6 hours and finish with two coats Varnish with 6 hours drying time between coats.						
5	On skirting	m ²	200	R	-	R	-
	<u>ON METAL</u>						
	One coat zinc chromate primer, one Undercoat and two coats Professional Gloss Enamel						
6	On rails, bars, handrails, steel work, window frames, door frames, burglar gates and window, gates, gutters and down pipes	m ²	150	R	-	R	-
	One coat zinc chromate primer, one Undercoat and two coats Chromadek Prasa Kingfisher Blue suitable for roof						
7	On roofs	m ²	350	R	-	R	-
	PAINTWORK, ETC TO PREVIOUSLY PAINTED WORK						
	Surface preparation and apply two coats acrylic paint						
8	On ceiling and cornices	m ²	350	R	-	R	-
	ON WOOD						
	Surface preparation and apply two coats PRASA Brown						
9	On Doors	m ²	70	R	-	R	-
	<u>ON METAL</u>						
	One coat zinc chromate primer, one Undercoat and two coats Professional Gloss Enamel						
10	On rails, bars, handrails, steel work, window frames, door frames, burglar gates and window, gates, gutters and down pipes	m ²	50	R	-	R	-

11	<p>Wash with polycell sugar soap and rinse with clean water to remove all traces of soap, remove all loose flaking paint and repair any cracks and defects, spot prime bare and repaired areas with bonding liquid and apply one coat sealer and two coats of interior quality Prasa neutral</p> <p>On internal walls</p>	m ²	220	R	-	R	-
12	<p>Wash with polycell sugar soap and rinse with clean water to remove all traces of soap, remove all loose flaking paint and repair any cracks and defects, spot prime bare and repaired areas with bonding liquid and apply one coat sealer and two coats of interior quality nonconductive floor epoxy paint</p> <p>On floors</p>	m ²	150	R	-	R	-
						R	-
	<u>BILL NO. 10</u>	<u>Unit</u>	<u>QTY</u>	<u>Rate</u>		<u>Amount</u>	
	<u>WATERPROOFING</u>						
	Waterproofing to roofs						
1	Preparation of surfaces including replacing of worn nails, Roll top ridging and corrugated roof sheeting	m ²	350	R	-	R	-
2	Polyester Membrane or any other approved with the applicable guarantee of five years Applied to bolt heads and lap joints applied as per manufactures specification and certificate of 5-year guarantee submitted after completion	m ²	350	R	-	R	-
						R	-
	<u>BILL NO. 11</u>	<u>Unit</u>	<u>QTY</u>	<u>Rate</u>		<u>Amount</u>	
	<u>BLINDS</u>						
1	25mm aluminium venetian blinds including brackets and mounting accessories to fit 1500 x 900mm high window opening, measurements to be fully verified at the depot	No.	20	R	-	R	-
						R	

		<u>Unit</u>	<u>QTY</u>	<u>Rate</u>	<u>Amount</u>
	<u>BILL NO. 12</u>				
	<u>ELECTRICAL</u>				
	PV Modules Supply and fit PV Modules. Minimum: Peak power 300 Watts each PV modules to be fitted atop galvanized roof sheets such that maximum solar radiation is absorbed by solar panel. Include all brackets, cables, lugs and ferrules as per manufacturer's specifications	No	27	R	R
1					
	Inverter Supply and fit Minimum: 8000-Watt inverter. Nominal DC 48V. Output voltage 230VAC 50Hz at 8000 Watts. Include all relevant cables, lugs and ferrules as per manufacturer's specifications.	No	1	R	R
2					
	Batteries Supply and fit 48V 100AH deep cycle Lithium-Ion battery pack. Include all relevant cables, lugs and ferrules as per manufacturer's specifications.	No	2	R	R
3					
4	Supply and fit Twin and Earth 2.5mm ²	M	600	R	R
	Supply and fit DB door and circuit breaker cover for existing DB	No	2	R	R
5					
6	Earth leakage single pole: Supply and fit 63 Amp	No	2	R	R
	Circuit breaker: Supply and fit 20Amp single pole circuit breaker	No	12	R	R
7					
8	Circuit breaker: Supply and fit 10Amp single pole circuit breaker	No	12	R	R
	Supply and fit 4-foot double LED fitting IP 65 rating	No	40	R	R
9					
10	Supply and fit Double plug socket at 16 Amp	No	30	R	R
	Supply and fit light switches at 16 Amp	No	8	R	R
11					
12	Solar geysers	No	4	R	R

	Supply and fit 200L Solar Panel Solar Assisted geysers including pipes and valves.				
	(Smart LED Solar Street lights with integrated Lithium Ion Battery and timer and mounting bracket) Supply and fit single unit Smart LED Solar Street lights with integrated Lithium Ion Battery and timer. Timer to be set for 100% illumination from 4h30 to 7h00. Lights off from 7h00 to 17h00. And then 100% illumination from 17h00 to 21h00. From 21h00 to 4h30 50% illumination. Solar lighting at minimum 3000 lumens per unit Integrated Battery pack Lithium Ion Protection Rating IP 65 Mounting bracket to conform to manufacturer's specifications Smart LED solar lamp to include all electrical protection in a single unit. Smart Solar lamps to be fitted to existing poles/ structures on site.				
13		No	20	R	R
	(Test, certify and guarantee) Ensure power is restored. Ensure lights working. All relevant testing completed and certified. Prasa shall require a 12 month guarantee on all parts and workmanship				
14		No	1	R	R
	Back up system Allow to install back up system (inventor) it must be able to 12 hours when the power is off. After installation 1 year guarantee of the system must be submitted to the client.				
15			Sum	R	R
					R -

FINAL SUMMARY**DRIEHOEK SIGNAL DEPOT**

		PAGE	AMOUNT
1	Alterations	3 to 4	R
2	Carpentry and Joinery	4 to 6	R
3	Ceiling work	6 to 7	R
4	Ironmongery	7 to 8	R
5	Tiling work	8	R
6	Plumbing work	9 to 11	R
7	Glazing	11 to 12	R
8	Metal work	12 to 13	R
9	Painting work	13 to 16	R
10	Water proofing	16	R
11	Blinds	16	R
12	Electrical	17 to 18	R
SUB TOTAL			R
ADD VAT @ 15%			R
TOTAL			R

**BUILDING OF NEW GUARD ROOM AT DRIEHOOK
STORE.**

SCOPE, SPECIFICATIONS AND SCHEDULE OF QUANTITIES

SECTION - B

PROVISIONAL SCHEDULE OF QUANTITIES
PRELIMINARY AND GENERAL
ANNEXTURE A

	OCCUPATIONAL HEALTH AND SAFETY	<u>Unit</u>	<u>QTY</u>	<u>Rate</u>	<u>Amount</u>
	<p>The contractor shall comply with all the requirements set out in the Construction Regulations, issued under The Occupational Health & Safety Act no 85 of 1993.</p> <p>Safety file shall be provided by the contractor prior to commencement of work.</p> <p>The contractor shall carry out the works with as little noise and mess as possible. All rubble shall be taken away from site on a daily basis.</p> <p>Note: All designated items should comply with local content threshold.</p> <p><u>BILL NO. 1</u></p> <p><u>PRELIMINARY AND GENERAL</u></p> <p><u>Preliminary and General</u></p>				
1	All Preliminary and General applicable to this project	Sum	1	R -	R -
	<u>Occupational Health and safety</u>				
2	Compliance with Occupational Health and Safety Act (Act 85 of 1993) and its regulations and with the Employers Health and Safety	Sum	1	R -	R -
	<u>Architectural work</u>				
3	Design, drawing and approval of the building plans from Municipality for 3.5m wide x 3m long x 2.6m high guard room, toilet inclusive with 200mm reinforced concrete roof slab floor plan including elevations	Sum	1	R -	R -
4	Allow for the security on site during the project duration.	Sum	1	R	R
	Carried to final summary				R -

ANNEXURE B: GB AND CIVIL WORK

	<u>BILL NO 2</u>	<u>Unit</u>	<u>QTY</u>	<u>Rate</u>		<u>Amount</u>	
	<u>Earthworks (Provisional)</u> <u>Supplementary Preambles</u> All soil poisoning and insecticide to be applied under a ten year guarantee by an approved firm of specialist <u>General notes</u> Fill material shall be placed in lift of not more than 150mm Compaction density to be controlled using DCP apparatus to a maximum of 30mm/blow 93% MOD AASHTO compaction is to be achieved Where backfill is required on both sides of walls, backfill both sides simultaneously. Where compaction of fill material behind retaining walls is done using mechanical rollers, the rollers must be kept 500mm away from the wall and this 500mm portion must be compacted with hand stampers or wackers. <u>Excavation in earth not exceeding 1m deep</u>						
1	Trenches	m ³	250	R	-	R	-
	<u>Extra over all excavation for carting away</u> Surplus material from excavation and/or stock piles on site to a dumping site to be located by the contractor						
2		m ³	20	R	-	R	-
	<u>Keeping excavation free of water</u>						
3	Keeping excavation free of water	Item		R	-	R	-

<u>Earth filling obtain from the excavation and/or prescribed stock piles on site compacted to 93% Mod AASHTO density</u>							
4	Backfilling to trenches, holes, etc	m ³	20	R	-	R	-
<u>Compaction of surfaces</u>							
5	Compaction of ground surface under floors etc including scarifying for a depth of 150mm, breaking down oversize material, adding suitable material where necessary and compacting to 93% Mod AASHTO density	m ²	20	R	-	R	-
<u>Soil poisoning: Soil insecticide</u>							
6	To bottom and sides of trenches	m ²	20	R	-	R	-
Carried to final summary						R	-
<u>BILL NO 3</u>		<u>Unit</u>	<u>QTY</u>	<u>Rate</u>		<u>Amount</u>	
<u>Concrete, Formwork and Reinforcement</u>							
<u>Cost of test:</u>							
The costs of making, storing and testing of concrete test cubes as required under clause 7, “test” of SABS 1200 G shall include the cost of providing cube moulds necessary for the purpose, for testing costs and for submitting reports on the test to the Architects. The testing shall be undertaken by an independent firm or institution nominated by the contractor to the approval of the architect							
<u>Formwork</u>							
Descriptions of formwork shall be deemed to include use and waste only (except where described as “left in” or “permanent”, for fitting together in the required forms, wedging, plumbing and fixing to true angles and surfaces as necessary to ensure easy release during stripping and for reconditioning as necessary before re-use.							
The vertical strutting shall be carried down to such construction as is sufficiently strong to afford the required support without damage and shall remain in position until newly constructed work is able to support itself.							

Formwork to sides of bases, pile caps, ground beams, etc will only be measured where it is prescribed by the engineer for design reasons. Formwork necessitated by irregularity or collapse of excavated faces will not be measured and the cost thereof shall be deemed to be included in the allowance for taking the risk of collapse of the sides of the excavation, provision for which is made in "Earthworks".

CONCRETE WORK

REINFORCED CONCRETE CAST AGAINST EXCAVATED SURFACES

25MPa/20mm Concrete

1	Strip footing	m ³	5	R	-	R	-
2	Concrete slab for guard room and standby generator	m ³	15	R	-	R	-

REINFORCED CONCRETE

25MPa/20mm Concrete

3	200mm concrete roof slab	m ³	10	R	-	R	-
---	--------------------------	----------------	----	---	---	---	---

TEST BLOCKS

4	Making and testing 150 x 150 x 150mm concrete strength test cube	No.	1	R	-	R	-
---	--	-----	---	---	---	---	---

CONCRETE SUNDRIES

Finishing top surface of concrete smooth with a wood float

5	Surface beds, floor slab, etc	m ²	30	R	-	R	-
---	-------------------------------	----------------	----	---	---	---	---

Finishing top surface of concrete smooth with a power float

6	Surface beds, floor slab, etc	m ²	30	R	-	R	-
---	-------------------------------	----------------	----	---	---	---	---

	<u>ROUGH FORMWORK (DEGREE OF ACCURACY III)</u>						
	Rough formwork to sides						
7	Strip footings	m ²	10	R	-	R	-
	<u>SMOOTH FORMWORK (DEGREE OF ACCURACY III)</u>						
	Smooth formwork to sides						
8	Concrete slab	m ²	5	R	-	R	-
9	Concrete roof slab	m ²	5	R	-	R	-
	Smooth formwork to soffit						
10	Roof concrete slab	m ²	15	R	-	R	-
	MOVEMENT JOINTS ETC						
	Saw cut Joints						
11	20 x 45mm Saw cut joints on top of concrete	m	10	R	-	R	-
	REINFORCEMENT						
	Reinforcement to structural concrete work						
12	Calculate, design, Fabrication and placing reinforcement for footings, floor and roof slab. Bending schedule to be submitted for approval prior to construction	Sum		R	-	R	-
	Carried to final summary					R	-

	<u>BILL NO 4</u>	<u>Unit</u>	<u>QTY</u>	<u>Rate</u>		<u>Amount</u>	
	<u>MASONRY</u>						
	<u>BRICKWORK</u>						
	<u>FOUNDATIONS (PROVISIONAL)</u>						
	15MPa/20mm concrete						
1	50mm blinding layer	m ³	1	R	-	R	-
	Brickwork of NFP bricks in class II mortar						
2	One brick walls	m ²	15	R	-	R	-
	SUPERSTRUCTURE						
	20-30MPa Silver-gray Travertine or similar approved Imperial FBX clay face brick, size 222 x 106 x 73mm, manufactured in accordance with SANS 227:2007, bedded and jointed in Class I mortar and pointed with flush vertical, flush horizontal joints, with every 6th horizontal joint to be recessed.						
3	One brick walls	m ²	60	R	-	R	-
4	Half brick walls	m ²	10	R	-	R	-
	BRICKWORK SUNDRIES						
	Brick reinforcement						
5	150mm wide reinforcement built in horizontal	m	20	R	-	R	-
6	230mm wide reinforcement built in horizontal	m	50	R	-	R	-
	Pre-stressed fabricated lintels						

7	150 x 70mm lintels in length not exceeding 4m long	m	8	R	-	R	-
	Face brick coping						
8	Coping on top of one brick wall	m	15	R	-	R	-
	Striking and Pointing on face brick work						
9	Striking and pointing on face brick work	m ²	100	R	-	R	-
10	Extra over brick work for brick on edge header course band	m	10	R	-	R	-
	Carried to final summary					R	-
	<u>BILL NO 5</u>	<u>Unit</u>	<u>QTY</u>	<u>Rate</u>		<u>Amount</u>	
	<u>WATERPROOFING</u>						
	<u>WATERPROOFING TO ROOFS</u>						
	On flat concrete roofs slab with parapet walls						
	Surface preparation, Supply and lay 4mm torch on waterproofing system saturated with Bitumen Silver UV protective agent (approved by the Professional Waterproofing Association) applied by means of the torch on fusion/gas weld application method, with 75mm overlaps, 100mm endlaps and 200mm upturns onto parapet walls. laid in strict accordance with Manufacturer's instructions						
1		m ²	0	R	-	R	-
	<u>DAMP PROOFING OF WALLS AND FLOORS</u>						
	One layer of 375 micron “Plastic Brikgrip DPC” embossed damp proof course						
2	In walls	m	15	R	-	R	-
	One layer of 250 micron “Consol Plastic Black” waterproof sheeting sealed at laps with Pressure Sensitive Tape”						
3	On earth feeling under slabs	m ²	15	R	-	R	-
	JOIN SEALANTS, ETC						

4	bitumen impregnated foam plastic joint sealing strips 10 x 20 expansion joints	m	10	R	-	R	-
	Carried to final summary					R	-
	<u>BILL NO 6</u> <u>CARPENTRY AND JOINERY</u> <u>SUPPLEMENTARY PREAMBLES</u> <u>Particle board shall comply with the following specification</u> 1) SABS 1300 Particle board: exterior and flooring type 2) SABS 1301 Particle board: interior type Description of hardwood joinery shall be deemed to include pelleting of bolt holes Joinery Description of frames shall be deemed to include frames, transoms, mullions, rails, etc <u>Fixing</u> Items described as “nailed” shall be deemed to be fixed with hardened steel nails or short pims to brickwork or concrete Items described as “plugged” shall be deemed to include screwing to fibre, plastic or metal plugs at not exceeding 600mm centres, and where described as “bolted” the bolts have been given elsewhere <u>Decorative</u> Decorative laminate finish shall be glued under pressure. Edge strips shall be butt jointed at junctions with adjacent similar finish <u>ROOFS ETC</u> Plate nailed timber roof truss construction	<u>Unit</u>	<u>QTY</u>	<u>Rate</u>	<u>Amount</u>		

The following is applicable in respect of roof trusses:

Trusses are at maximum 1000mm centres and with a pitch of

The roof to have 600mm overhang on both sides (along lengths), eaves cladded with 4mm fibre cement ceiling

Roof to have vertical cladded gable end projecting 150mm at ends of the building.

The first set of dimensions given with the descriptions are the external dimensions of the building, the second set of dimensions (in brackets) are the external dimensions of the roofs which include the dimensions of the overhangs along lengths and at ends

All trusses are to be fabricated in a factory by specialist approved by the Architect

All trusses shall be designed by a registered Professional Engineer (in accordance with the draft SABS Code of Practice for the Design of Timber Structures)

The Manufacture of the trusses shall supply a written guarantee that the trusses are design, manufactured and erected to support the roof covering specified. The guarantee shall be valid for a period of 10 (ten) years

Sawn softwood

Roof construction to double pitched roof with two gable ends over rectangular shaped building erected in position complete including all trusses, jack rafters, permanent bracing, gang nail plates (wall plates and purlins measured elsewhere)

1	Building size 6500 x 15000mm long overall on plan	No.	1	R	-	R	-
<u>Wrought softwood</u>							
2	50 x 75mm purlins at 900mm centre's to sides of trusses	m	150	R	-	R	-
3	38mm x 114mm wall plates	m	50	R	-	R	-
4	38mm x 100mm Grade M4 ridge beam	m	30	R	-	R	-

	<u>Sundries</u>						
5	Two coats creosote on sawn timbers	m ²	20	R	-	R	-
	<u>Fascia Board</u>						
6	250mm wide x 38mm thick timber fascia boards	m	30	R	-	R	-
7	250mm wide x 38mm thick timber barge boards	m	20	R	-	R	-
	<u>DOORS</u>						
	<u>External Doors</u>						
8	813 x 2032 x 44mm Single leaf semi solid door with 3.2mm hardwood veneer covering on both sides and concealed hardwood vertical edge strip hung to steel door frame	No.	1	R	-	R	-
	<u>Internal Doors</u>						
9	813 x 2032 x 44mm single leaf semi solid door with 3.2mm hardwood veneer covering on both sides and concealed hardwood vertical edge strip hung to steel door frame	No.	2	R	-	R	-
	<u>FITTINGS</u>						
	<u>Built in cupboards fittings</u>						
	<u>The following in modular timber cupboards, counters, duty stations, desk etc. as per Cupboard Connections Specification</u>						
	<u>Carcasses of 16mm thick particle board with both faces white melamine with white Masonite backs. Shelving of 16mm particle board, both faces white melamine and front edge in white PVC. Doors of 16mm particle board with post formed vertical edges and laminated in Renolit. Tops of 32mm particle board with post formed leading edges and laminated in high pressure decorative laminate. All butt edges and edges against walls to be sealed with silicon sealant. Hinges to be "Hettich". Drawer runners to be metal 500mm series with nylon runners or similar. All</u>						

10	<u>units complete with door, handles, hinges, cupboards, door, locks, barrel bolts and shelves. Floor unit complete with kick plates. (Formica tops measured elsewhere)</u>						
	32mm office work top 450mm wide post formed one side only	m	3	R	-	R	-
11	<u>Furniture</u>						
	<u>Black with square tube steel frame, chip foam seat, medium back density foam with fabric covering</u>						
11	825 (h) x 450 (w) x 560 (d) black office chairs	No.	2	R	-	R	-
	Carried to final summary					R	-
	<u>BILL NO 7</u>	<u>Unit</u>	<u>QTY</u>	<u>Rate</u>		<u>Amount</u>	
	<u>TILING</u>						
	<u>Prices:</u>						
	Prices are to include for all square cutting and waste, cleaning off on completion and protection from injury. Areas are measured net to face of brickwork and concrete. Any additional area caused by the thickness of tiling and screed are to be allowed for in prices						
	<u>FLOOR TILING</u>						
	600x600mm Full Bodied polished Porcelain tiles with 3mm grouting lines						
1	On floors	m ²	15	R	-	R	-
	<u>WALL TILING</u>						
	Matt Full Bodied Porcelain tiles, size 600 x 300mm x 12mm fixed to internal wall plaster backing with TAL tile adhesive mixed with TAL bonding liquid in lieu of water with joints continuous in both directions and grouted with TAL tile grout, excess grout on the surface to be cleaned with water as work proceeds.						
2	On walls	m ²	1	R	-	R	-

	<u>SKIRTING</u>						
	Meranti skirting						
3	20 x 120mm solid meranti skirting	m	10	R	-	R	-
	Carried to final summary					R	-
	<u>BILL NO 8</u>	<u>Unit</u>	<u>QTY</u>	<u>Rate</u>		<u>Amount</u>	
	<u>IRONMONGERY</u>						
	<u>HINGES, BOLTS, ETC</u>						
	<u>Supply and install</u>						
1	Heavy duty steel hinges for steel door frames	No.	6	R	-	R	-
2	Grade 304 Stainless Steel floor mounted door stop, plugged and screwed to floor with matching stainless steel screws.	No.	2	R	-	R	-
	<u>LOCKS</u>						
	<u>Supply and install</u>						
3	Ultra-security heavy duty lock	No.	1	R	-	R	-
4	3 lever lock with handles	No.	2	R	-	R	-
5	Grade 304Stainless Steel indicator bolt (code: fixed to surface with matching stainless steel screws.	No.	1	R	-	R	-
	<u>Bathroom accessories</u>						
6	Satin stainless steel toilet roll holders for 2 rolls with central shaft system and cylinder lock, plugged and screwed to the wall with stainless steel screws. (vandal resistant)	No.	1	R	-	R	-
	Carried to final summary					R	-

	<u>BILL NO 9</u>	<u>Unit</u>	<u>QTY</u>	<u>Rate</u>		<u>Amount</u>
	<u>PLUMBING WORK</u>					
	SANITARY FITTINGS					
	Supply and install					
1	Water close coupled suite colour White , comprising 90° outlet open rim pan with matching 9 litre front single flush cistern including lid and fitments and Thermoset seat.	No.	1	R	-	R -
2	Basin colour White, size 510 x 405mm with two tap hole including integrated overflow and chain stay hole bolted to wall with two x 10mm bolts and including Classic floor mounted pedestal and sealed with silicone sealant where basin meets wall.	No.	1	R	-	R -
	WASTE UNION ETC					
	Supply and install					
3	Basin waste, plug, chain, stay and backnut	No.	1	R	-	R -
	SOIL DRAINAGE					
	Upvc class 34 pipes including excavation, bedding, backfilling and compaction and disposal of surplus material					
4	110mm pipes vertical or ramped to cleaning eyes etc (no excavation)	m	10	R	-	R -
5	110mm pipes laid in and including trenches not exceeding 1m deep	m	100	R	-	R -
6	110mm pipes laid in and including trenches exceeding 1m and not exceeding 2m deep	m	50	R	-	R -
7	50mm pipes with all connection and make good	m	5	R	-	R -
8	50mm pipes chased into brick walls with all connection and make good	m	5	R	-	R -
	Extra over Upvc class 34 pipes for fittings					
9	110 Bend	No.	2	R	-	R -

10	110mm junction	No.	2	R	-	R	-
11	110mm Access bend	No.	2	R	-	R	-
	Upvc Gulley						
	110mm Gulley not exceeding 1m deep formed of trap, vertical pipe and gully head with loose grating, encased in 15MPa unreinforced concrete, with top of gully 50mm above surrounding finished surfaces, top surface of concrete splayed and with 1:3 cement plaster on exposed surfaces	No.	1	R	-	R	-
	Sundries						
13	110mm Upvc cleaning eye to end of 110 Upvc pipe	No.	3	R	-	R	-
14	350 x 350 x 50mm thick precast concrete inspection eye marker slab finished smooth on exposed surfaces with letters "I.E" or "I.O" on top and placed flush in ground or paving	No.	3	R	-	R	-
15	Testing soil drainage system	Item		R	-	R	-
	Manhole covers						
	Precast concrete manholes with medium duty concrete manhole cover and frame bedded in 1:3 cement mortar, spacers bedded in 1:6 cement mortar and precast concrete slab including excavation, backfilling, compaction, risk of collapse, cartaway surplus material, 300mm thick unreinforced 20MPa/19mm concrete base projection 75mm wide from walls, benching, junctions, channeling and step irons						
16	980mm diameter (internally) Precast concrete manhole not exceeding 1m deep	No.	3	R	-	R	-
17	980mm diameter (internally) Precast concrete manhole exceeding 1m deep and not exceeding 2m deep	No.	3	R	-	R	-
	Sewer connection						
18	Cutting into sides of existing manhole chamber for and connecting 110mm pipe including inserting 110mm channel junction and making good concrete benching	No.	1	R	-	R	-
	WATER RETICULATION						
	PREAMBLES						

	The contractor is referred to the General Preambles for trades 2017 published by the Association of South Africa Quantity Surveyors before pricing						
	WATER PIPEWORK						
	HDPE PE 100PN 12.5 pipes including excavation, bedding, backfilling, and compaction and disposal of surplus material						
19	25mm pipes laid in and including trenches not exceeding 1m deep	m	150	R	-	R	-
	Extra over HDPE						
20	25mm elbow	No.	3	R	-	R	-
21	25mm equal tee	No.	3	R	-	R	-
	TRAPS ETC						
	Supply and install						
22	38mm wash hand basin “P” trap	No.	3	R	-	R	-
	TAPS, VALVES, ETC						
	Supply and install						
23	15mm Push button pillar tap.	No.	1	R	-	R	-
24	Flexi connector	No.	3	R	-	R	-
25	15 Brass Gate Valve	No.	2	R	-	R	-
26	Mini Ball Valve	No.	3	R	-	R	-
27	22mm Brass Gate Valve including cast iron valve box	No.	1	R	-	R	-
	Extra over PVC pipes for fittings						
28	110mm pan connector completely	No.	2	R	-	R	-
29	110 PVC pipes 87.5 degree soil and vent horn access heel bend	No.	2	R	-	R	-
30	110 PVC pipe with all the fittings	m	5	R	-	R	-
	WATER SUPPLIERS						

	Class “O” copper pipe					
31	15mm pipes	m	20	R	-	R -
32	15mm pipes chased into brick walls and make good	m	50	R	-	R -
	Extra over class “O” copper pipes for capillary fittings					
33	15mm fitting	No.	20	R	-	R -
34	15mm Tee	No.	15	R	-	R -
	RAINWATER DISPOSAL SYSTEMS					
	0.8mm galvanized sheet iron including painting to Prasa colours					
35	150 x 150mm eaves gutter with bracket at every 1m intervals	m	30	R	-	R -
36	Extra over 150 x 150mm eaves gutter for stopped end	No.	4	R	-	R -
37	Extra over 150 x 150mm eaves gutter for outlet for 0.15mm pipe	No.	4	R	-	R -
38	0.15mm rainwater pipes	m	15	R	-	R -
39	Extra over 0.15mm rainwater pipe for shoe	No.	4	R	-	R -
	Carried to final summary				R	-
	<u>BILL NO.10</u>	<u>Unit</u>	<u>QTY</u>	<u>Rate</u>	<u>Amount</u>	
	<u>METAL WORK</u>					
	SECURITY GATES					
	Supply and install Burglar door					
1	900 x 2100mm high Heavy duty Burglar door and frame with 16mm steel round bar and 40 x 40 x 2.5mm square tubing as per attached drawing for single door	No.	1	R	-	R -
	Supply and install Burglar window					
2	1m W x 1m H Box windows guard constructed with 5mm of expanded metal and 50 x 50 x 6mm equal angles. To be briefly explain during the briefing session.	No.	1	R	-	R -

ALUMINIUM WINDOWS						
Standard residential window						
3	Window type PT66 Bronze 600 x 600mm high	No.	1	R	-	R -
4	Horizontal bronze sliding window 1790w x 890h opening right and left	No.	2	R	-	R -
						R -
Carried to final summary						
<u>BILL NO.11</u>		<u>Unit</u>	<u>QTY</u>	<u>Rate</u>		<u>Amount</u>
<u>ROOF COVERING ETC</u>						
PROFILED METAL SHEETING AND ACCESSORIES						
<u>Roof sheeting to be Concealed Fix interlocking "KLIP-LOK 700", 0,58mm thick heavy industrial Z275 spelter galvanised steel sheeting with Chromadek, ColorPlus, Colourbond or Globalcoat finish to one side and Grey other side and accessories, fixed to steel purlins using SL 700 approved clips and fasteners. Cover width 700mm. High wind - 120km/h plus - loading to be considered with installation and fixing must be in accordance with manufacturer's recommendations and specifications.</u>						
1	Roof covering with pitch not exceeding 25 degrees	m ²	120	R	-	R -
2	450mm galvanized steel roll top ridge	m	15	R	-	R -
Carried to final summary						R -
<u>BILL NO. 12</u>		<u>Unit</u>	<u>QTY</u>	<u>Rate</u>		<u>Amount</u>
<u>GLAZING</u>						
<u>GLAZING TO STEEL WITH PUTTY</u>						
4mm obscure glass						

1	Panes exceeding 0.1m ² and 0.5 m ² 6.38mm white arctic snow obscure safety glass	m ²	1	R	-	R	-
2	Panes exceeding 0.1m ² and 0.5 m ²	m ²	10	R	-	R	-
	Carried to final summary					R	-
	<u>BILL NO. 13</u> <u>PAINTWORK</u> For preambles see “Model Preambles for Trades” 2008 edition published by the Association of South African Quantity Surveyors SUPPLEMENTARY PREAMBLES Paint: All paint, complete with undercoat, primer, etc. to be used strictly in accordance with the manufactures specification. Only paint which bears the described trade names will be permitted onsite. No Substitution will be allowed Previously painted metal surfaces Surfaces shall be thoroughly rubbed and cleaned down. Blistered or peeling paint shall be completely removed down to bare metal Previously painted wood surfaces Surfaces shall be thoroughly cleaned down. Blistered or peeling paint shall be completely removed and cracks and crevices shall be primed, filled with a suitable filler and finished smooth PAINTWORK, ETC TO NEW WORK	<u>Unit</u>	<u>QTY</u>	<u>Rate</u>	<u>Amount</u>		

	One coat professional plaster primer and two coats contractors White Gloss Enamel						
1	On gutters and downpipes	m ²	25	R	-	R	-
2	On fascia and barge boards	m ²	25	R	-	R	-
	One coat professional plaster primer and two coats contractors Brick and Slasto Dressing/Brick seal						
3	On internal and external face brick walls	m ²		R	-	R	-
	ON WOOD						
	One coat wood primer, one Universal Undercoat and two coats PRASA Brown						
4	On Doors	m ²	30	R	-	R	-
	<u>ON METAL</u>						
	One coat zinc chromate primer, one Undercoat and two coats Professional Gloss Enamel						
5	On rails, bars, window frames, door frames, burglar gates, gates, gutters and down pipes	m ²	20	R	-	R	-
	PAINTWORK, ETC TO PREVIOUSLY PAINTED WORK						
	ON FLOATED PLASTER						
	Wash with polycell sugar soap and rinse with clean water to remove all traces of soap, remove all loose flaking paint and repair any cracks and defects, spot prime bare and repaired areas with bonding liquid and apply one coat sealer and two coats of interior quality nonconductive floor epoxy paint						
6	On floors	m ²	0	R	-	R	-
	Carried to final summary					R	-

	<u>BILL NO. 14</u>	<u>Unit</u>	<u>QTY</u>	<u>Rate</u>	<u>Amount</u>	
	<u>PAVING WORK</u> <u>Earthworks</u> <u>Supplementary and preambles</u> Excavation: No claim for rock excavation will be entertain unless the contractor has timeously notified the project manager thereof prior to backfilling Laying, backfilling, bedding, etc Pipes shall be laid and bedded and trenches shall be carefully backfilled in accordance with manufacturers' instruction Where no manufacturers' instruction exist pipes shall be laid in accordance with clauses 5.1 and 5.2 of SABS 1200 L Pipe trenches etc shall be backfilled in accordance with clauses 3, 5.5, 5.6, 5.7, and 7 of SABS 1200 DB Earthworks (Pipe trenches) Pipes shall be bedded in accordance with clauses 3.1 to 3.4.1, 5.1 to 5.3 and 7 of SABS 1200 LB : Bedding (Pipes) <u>Leave site in good condition</u> The contractor shall leave the site where plumbing was executed, clean and neat at completion. Cut and borrow to fill including all material, site to be located by the contractor G5 Material in compacted layer thickness 200mm less compacted to 90% modified AASHTO density Extra over for excavation and breaking down material in:					
1		m ³	200	R	-	R -
2	Soft rock	m ³	60	R	-	R -

3	Hard rock	m ³	20	R	-	R	-
	Cut to spoil or stockpile, site to be located by the contractor						
	Material obtained from						
4	Soft excavation	m ³	40	R	-	R	-
5	Hard excavation	m ³	40	R	-	R	-
6	Rip to 450mm of all previous compacted areas	m ³	300	R	-	R	-
	EXCAVATION, FILLING, ETC						
	Excavation in earth not exceeding 1m deep						
7	Trenches for kerbs and kerbing support	m ³	100	R	-	R	-
8	Holes for catchpits	m ³	40	R	-	R	-
	Cut and borrow to fill including all material, site to be located by the contractor						
9	Material in compacted layer thickness 200mm and less, compacted to 90% Mod AASHTO density	m ³	100	R	-	R	-
	Earth filling obtain from the excavation and/or prescribed stock piles on site compacted to 93% Mod AASHTO density						
10	Backfilling to trenches	m ³	120	R	-	R	-
	50mm ² SWA, underground cable Supply, delivery, and Installation. Include all the necessary accessories required for installation of the cable.	m	300	R		R	
12	Cable Trenches and Backfilling.	m ³	120	R		R	

	Compaction of surfaces					
13	Remove all unwanted vegetation, level ground and create a natural fall for drainage, Compaction of ground surface under floors etc	m ²	600	R	-	R -
	Flood LED luminaire manufactured from high pressure unpainted die - cast aluminum housing complying with SANS 60588 --5. Both LED engine and power supply compartments to comply with IP 66 rating. 300W LED Luminaire to be installed on a 30m mast.					
14	Include all the necessary accessories required for installation. Supply, Delivery, and Installation	No	12	R		R
	Carried to final summary				R	-

SUMMARY TO FINAL – SECTION B 1

	STATION NAME	PAGE	AMOUNT
1	Preliminary and general	21	R -
2	Earthworks	22	R -
3	Concrete work	23 to 25	R -
4	Masonry	25 to 27	R -
5	Waterproofing	27	R -
6	Carpentry and Joinery	28 to 31	R -
7	Tiling work	31 to 32	R -
8	Ironmongery	32	R -
9	Sanitary fittings	33 to 36	R -
10	Metal work	36	R -
11	Roof covering	37	R -
12	Glazing	37	R -

13	Painting	38 to 39	R	-
14	Paving work	40 to 41	R	-
SUB TOTAL			R	-

PROVISIONAL SCHEDULE OF QUANTITIES

ELECTRICAL WORK AT DRIEHOOK STORE GUARD ROOM

	OCCUPATIONAL HEALTH AND SAFETY	<u>Unit</u>	<u>QTY</u>	<u>Rate</u>	<u>Amount</u>
	<p>The contractor shall comply with all the requirements set out in the Construction Regulations, issued under The Occupational Health & Safety Act no 85 of 1993.</p> <p>Safety file shall be provided by the contractor prior to commencement of work.</p> <p>The contractor shall carry out the works with as little noise and mess as possible. All rubble shall be taken away from site on a daily basis.</p> <p>Note: All designated items should comply with local content threshold.</p>				
	<u>BILL NO.1</u>	<u>Unit</u>	<u>QTY</u>	<u>Rate</u>	<u>Amount</u>
	<u>ELECTRICAL WORK</u>				
	LED Light fittings				
1	1500m (5 foot) 58w Open channel LED Fluorescent fittings double tubes for ticket office building	No.	12	R -	R -
2	150w Flood LED luminaire manufactured from high pressure unpainted die - cast aluminium housing complying with SANS 60588 --5. Both LED engine and power supply	No.	8	R -	R -
3	7w LED bulk head fittings completely with bulbs	No.	1	R -	R -
	PLUGS				
4	4 X 4 Double plug	No.	5	R -	R -
5	4 X 4 Single plugs	No.	5	R -	R -

	Electrical casing						
6	25 x 40mm PVC trunking	m	30	R	-	R	-
7	20mm PVC SABS conduit completely with all the couplings, saddle, spacer bar assembly and heavy duty U clamps	m	50	R	-	R	-
8	20mm galvanized SABS conduit completely with all the couplings and heavy duty U clamps	m	20	R	-	R	-
9	40mm PVC SABS conduit completely with all the couplings, saddle, spacer bar assembly and heavy duty U clamps	m	50	R	-	R	-
	<u>SWITCHES</u>						
10	White 1 lever 2 way switch	No.	2	R	-	R	-
11	White 2 lever 1 way switch	No.	5	R	-	R	-
	Electrical cables						
12	35mm ² PVC 4 core cable 600/1000V main supply on earth not exceeding 1m deep covered with concrete and re-surfacing after cable has been laid	m	300	R	-	R	-
13	2.5mm ² suffix cable or GP wire for plugs	m	200	R	-	R	-
14	1.5mm ² suffix cable or GP wire for lights	m	200	R	-	R	-
	Circuit breakers						
15	40 Amp circuit breaker	No.	6	R	-	R	-
16	20 Amp circuit breaker	No.	12	R	-	R	-
17	63 A Main circuit breaker	No.	3	R	-	R	-
18	63 A earth leakage	No.	2	R	-	R	-
19	100 Amp main circuit breaker	No.	1	R	-	R	-

20	Wall mounted 40A isolator	No.	2	R	-	R	-
	<u>Distribution board</u>						
21	Supply, install and commission new Single phase indoor 13mm IP 40 white wall mounted DB board completely supplied with adjustable galvanized wall tray, c/w earth, neutral bars with all circuit breakers mounted on wall and make good	No.	2	R	-	R	-
	HVAC Systems						
22	Supply, install and commission new 24000 BTU split unit, inverter technology air conditioner completely with all accessories (drain pipe, amorflex, copper pipe, refrigerant, cable, communication wire, brackets, circuit breaker, isolator, etc)	No.	2	R	-	R	-
	Motor gate						
23	Supply, install and commission new 24Vdc electromechanical Heavy Duty gear motor with built in control unit battery charger, base plate, 2 batteries 12v, limit switch cams, 4m rack, 2 remotes, anti-theft brackets and to be equipped with power pack, external receiver and wall mounted console system controlled from the guard room 40m away from the motor gate, etc completely installed and working for gates up to 1200 kg's.	No.	1	R	-	R	-
	<u>SWITCHES</u>						
24	Daylight switches	No.	2	R	-	R	-
	<u>STANDBY GENERATOR</u>						
25	Supply, install and commission new 41KVA diesel Generator including canopy, 38kva prime power, maximum 41kva standby, 380v, 1500 RPM 75 liter tank: 13 hours runtime @ 75% load built in AVR delivers non fluctuating power starter motor 4.5kw 24v electric starter 4 cylinder 4 stroke powerful diesel engine 3 phase out put 38Kva prime silent diesel generator with 100A three phase automatic transfer switch	No.	1	R	-	R	-

26	<p><u>EARTHING</u></p> <p>Earth bonding for all the buildings as per SANS 10142 and the specification.</p> <p><u>ELECTRICAL COMPLIANCE</u></p> <p>All work to comply to SANS 10142 Compliance certificate to be provided on completion Pricing to include all necessary complete connection</p>	No.	1	R	-	R	-
	<p>Certificate of compliance and all other testing required including 12 month guarantee</p>	Item	1	R	-	R	-
Carried to final summary						R	-

ELECTRICAL WORK FINAL SUMMARY***ELECTRICAL WORK AT THE GUARD ROOM***

	STATION NAME	PAGE	AMOUNT
1	Electrical work	43 to 46	R -
SUB TOTAL			R -
ADD VAT @ 15%			R -
TOTAL			R -

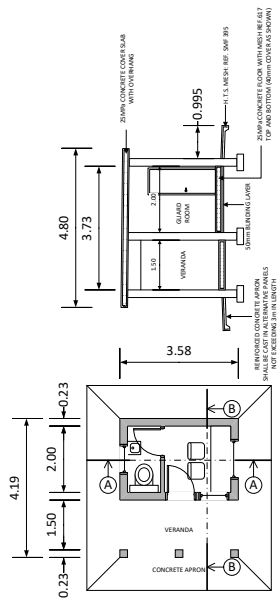
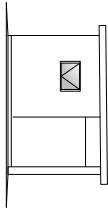
DRIEHOOK STORE GUARD ROOM FINAL SUMMARY***SECTION B2***

	STATION NAME	PAGE	AMOUNT
1	Annexure A : Preliminary and General	21	R -
2	Annexure B : General building works	22 to 42	R -
3	Annexure C Electrical work	43 to 47	R -
SUB TOTAL			R -
ADD VAT @ 15%			R -
TOTAL AMOUNT TO SECTION B			R -

FINAL SUMMARY OF DRIEHOOK SIGNAL CABIN AND DRIEHOOK STORE

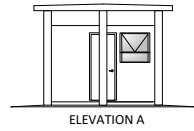
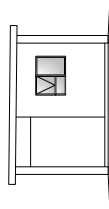
FINAL SUMMARY SECTION A UPGRADE OF DRIEHOOK SIGNAL DEPOT.	R
FINAL SUMMARY SECTION B BUILDING OF NEW GUARD ROOM AT DRIEHOOK STORES	R
TOTAL SUMMARY	R

ELEVATION B-B

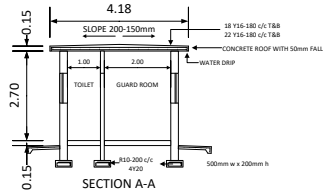


SECTION B-B

ELEVATION B



ELEVATION A



SECTION A-A